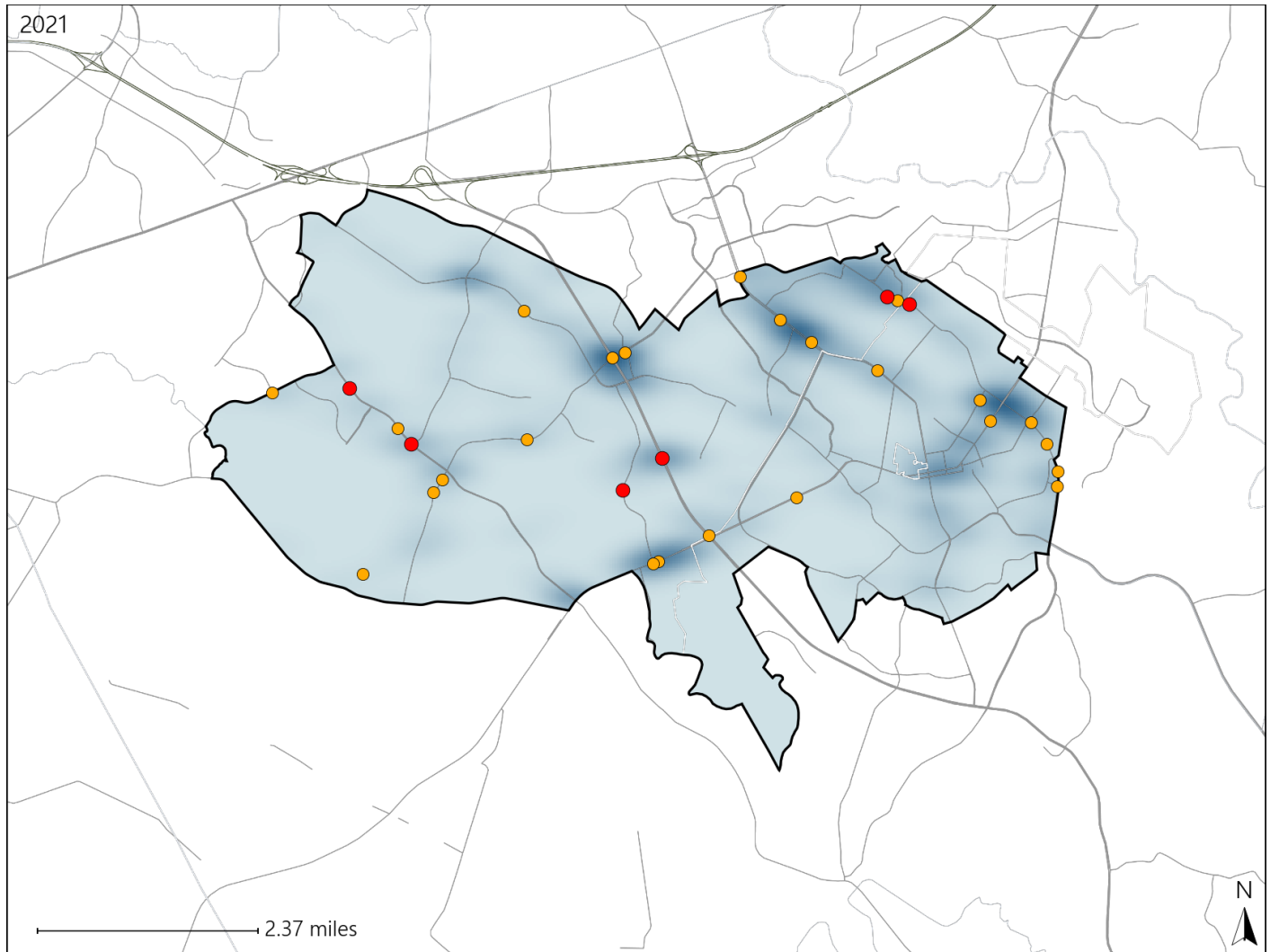


Virginia House District 50 Crash Statistics

Report Generated April, 2022

	Count	Highest Time Period(s)	Highest Day(s)	Highest Month(s)
Fatal Crashes	6	3:00pm - 5:59pm	Sunday • Tuesday	October
Resulting Fatalities	6	Noon - 2:59pm (66%)	(66%)	(33%)
Serious Injury Crashes	24	9:00pm - 11:59pm (29%)	Tuesday (21%)	December (21%)



House District 50 Crashes

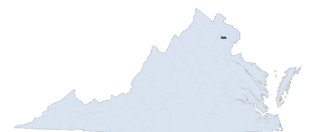
Interstate Crashes

- Fatal
- Serious Injury

Non-interstate Crashes

- Fatal
- Serious Injury

The blue gradient represents the density of all crashes.



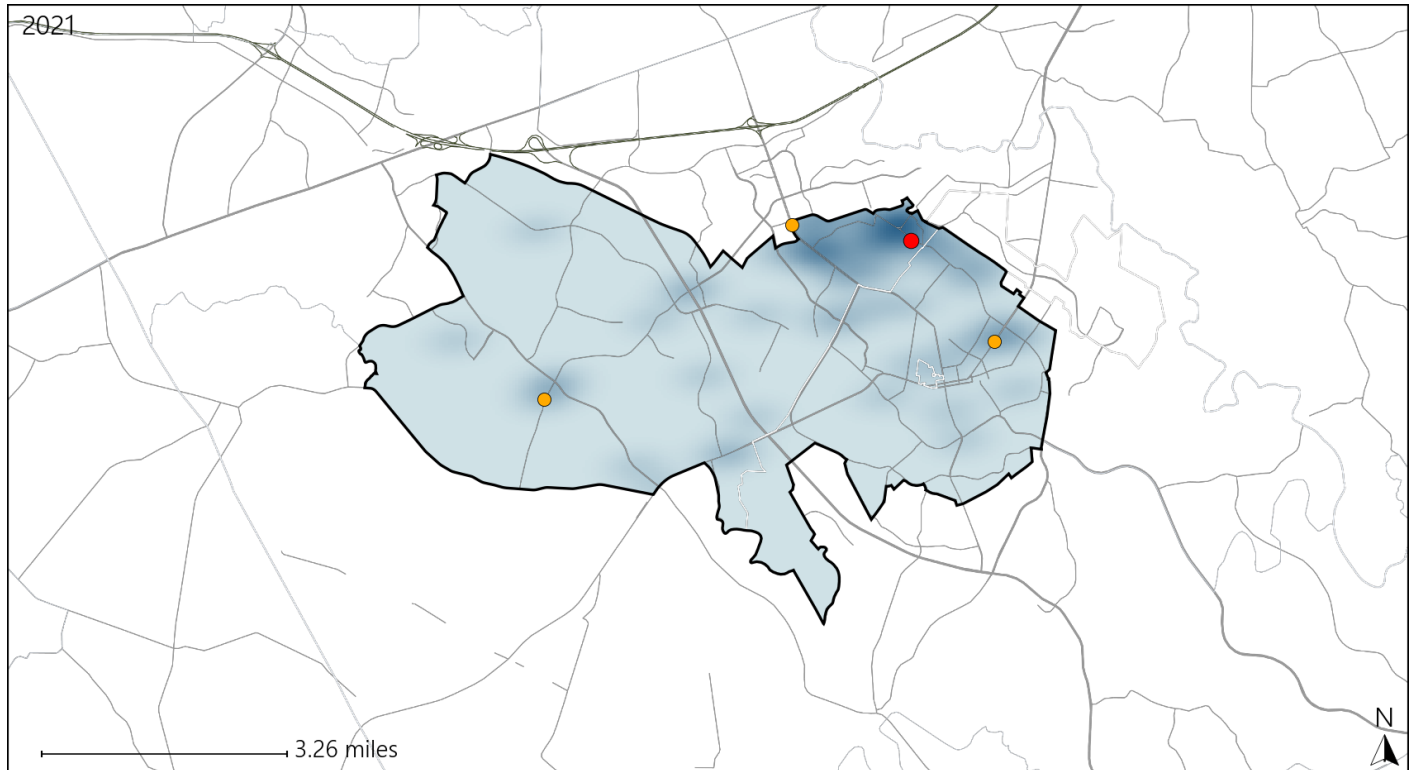
Available Crash Data - Calendar Year (CY)	CY 2018	CY 2019	CY 2020	CY 2021
Total Crashes	1126	949	825	856
Fatal Crashes	7	1	4	6
Injury Crashes	564	450	372	395

Report of Crashes for January 1st - December 31st, 2021

Virginia House District 50 Alcohol Crash Statistics

Report Generated April, 2022

	Count	Highest Time Period(s)	Highest Day(s)	Highest Month(s)
Fatal Crashes	1	Midnight - 2:59am	Friday	October
Resulting Fatalities	1	(100%)	(100%)	(100%)
Serious Injury Crashes	3	9:00pm - 11:59pm	Friday • Saturday	December • July
		(67%)	(66%)	(66%)



House District 50 Alcohol-Related Crashes

Interstate Crashes

Non-interstate Crashes

- Fatal
- Serious Injury

- Fatal
- Serious Injury

The blue gradient represents the density of all alcohol-related crashes.

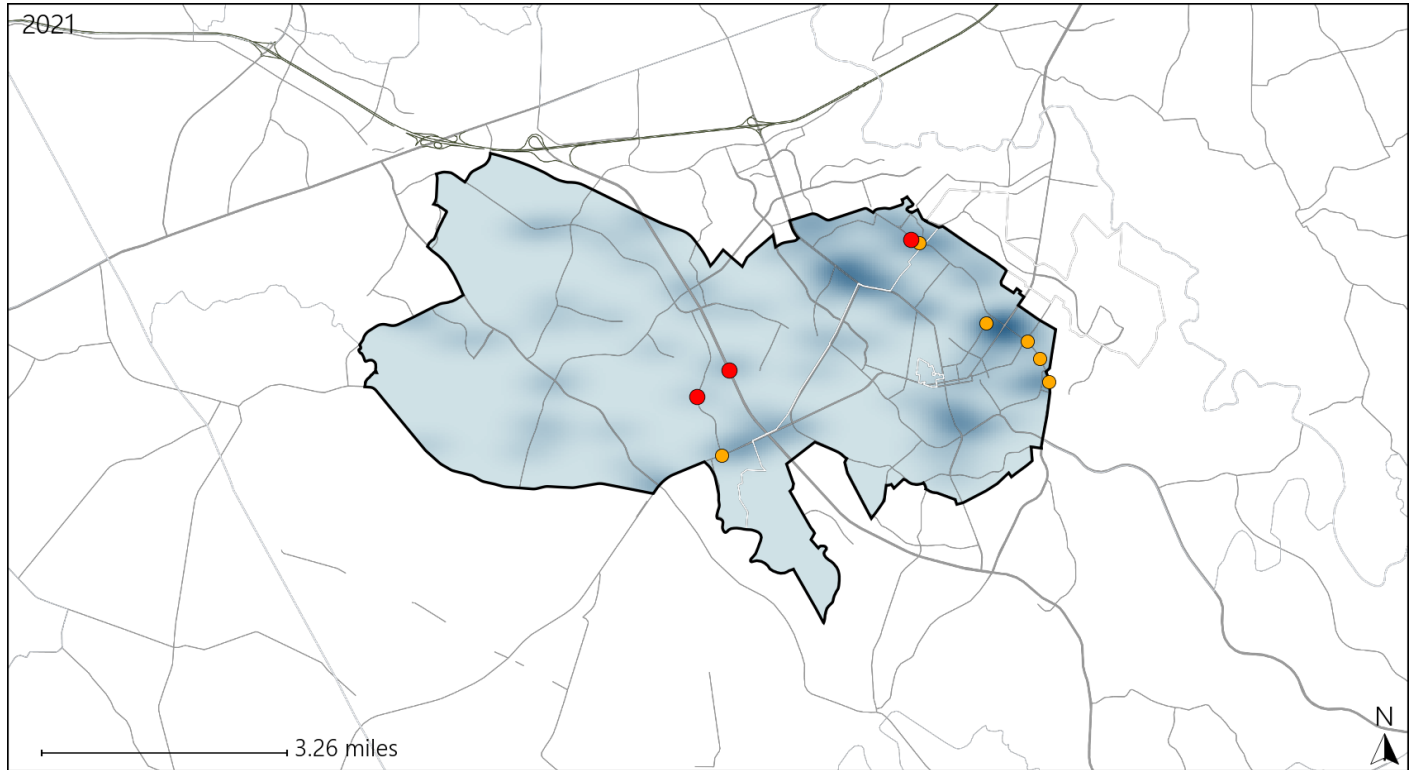


Available Crash Data - Calendar Year (CY)	CY 2018	CY 2019	CY 2020	CY 2021
Total Crashes	1126	949	825	856
Fatal Crashes	7	1	4	6
Injury Crashes	564	450	372	395
Alcohol-Related Fatal Crashes	3	0	2	1
Percent of Alcohol-Related Fatal Crashes to Total Fatal Crashes	43%	0%	50%	17%
Alcohol-Related Injury Crashes	31	36	27	27
Percent of Alcohol-Related Injury Crashes to Total Injury Crashes	5%	8%	7%	7%

Virginia House District 50 Speed Crash Statistics

Report Generated April, 2022

	Count	Highest Time Period(s)	Highest Day(s)	Highest Month(s)
Fatal Crashes	3	3:00pm - 5:59pm	Sunday	April • May
Resulting Fatalities	3	Midnight - 2:59am (66%)	(67%)	(66%)
Serious Injury Crashes	6	6:00am - 8:59am (33%)	Tuesday (33%)	August • December (66%)



House District 50 Speed-Related Crashes

Interstate Crashes

- Fatal
- Serious Injury

Non-interstate Crashes

- Fatal
- Serious Injury

The blue gradient represents the density of all speed-related crashes.

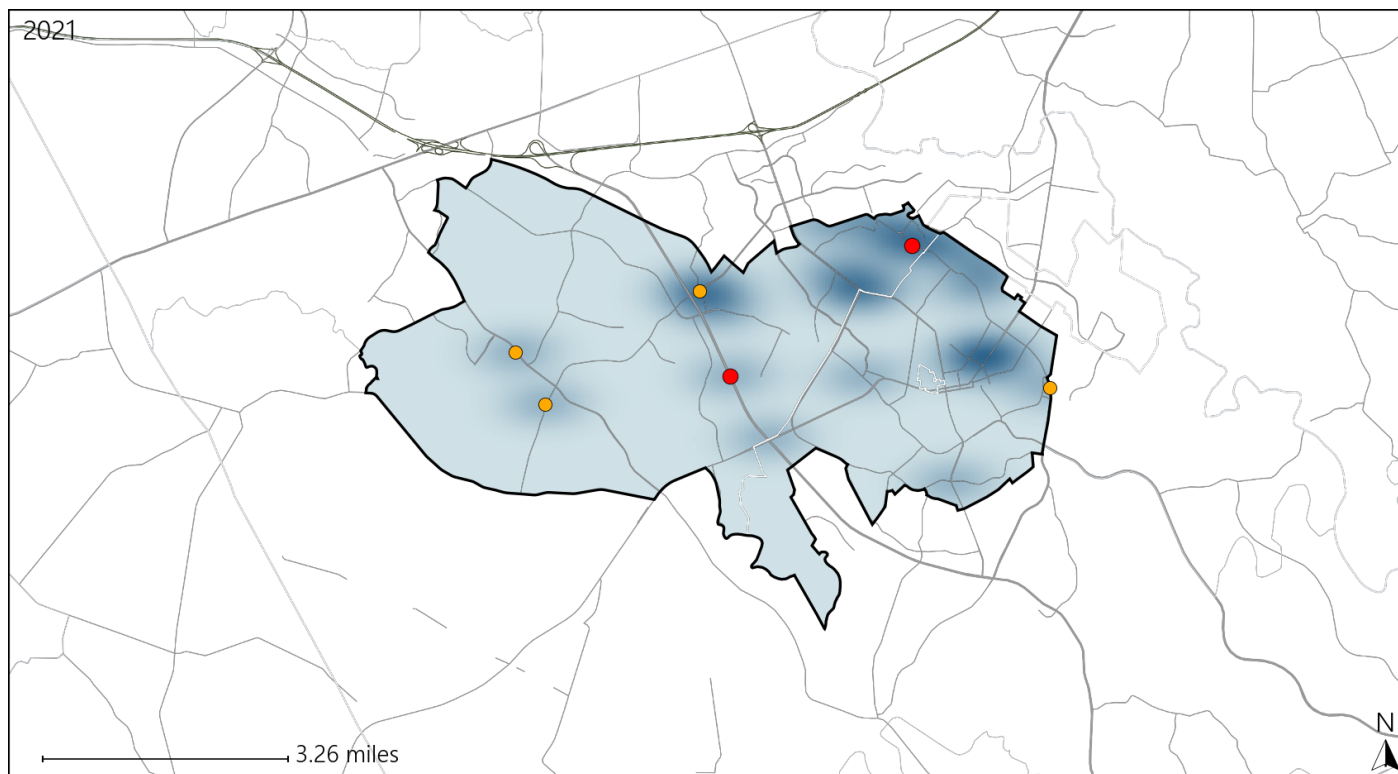


Available Crash Data - Calendar Year (CY)	CY 2018	CY 2019	CY 2020	CY 2021
Total Crashes	1126	949	825	856
Fatal Crashes	7	1	4	6
Injury Crashes	564	450	372	395
Speed-Related Fatal Crashes	6	1	2	3
Percent of Speed-Related Fatal Crashes to Total Fatal Crashes	86%	100%	50%	50%
Speed-Related Injury Crashes	80	78	85	68
Percent of Speed-Related Injury Crashes to Total Injury Crashes	14%	17%	23%	17%

Virginia House District 50 Unrestrained Crash Statistics

Report Generated April, 2022

	Count	Highest Time Period(s)	Highest Day(s)	Highest Month(s)
Fatal Crashes	2	3:00pm - 5:59pm	Friday • Sunday	April • October
Unrestrained Fatalities	2	Midnight - 2:59am (100%)	(100%)	(100%)
Serious Injury Crashes	4	Noon - 2:59pm (50%)	Tuesday (75%)	August • January (50%)



House District 50 Unrestrained-Related Crashes

Interstate Crashes

Non-interstate Crashes

● Fatal

● Fatal

● Serious Injury

● Serious Injury

The blue gradient represents the density of all unrestrained-related crashes.

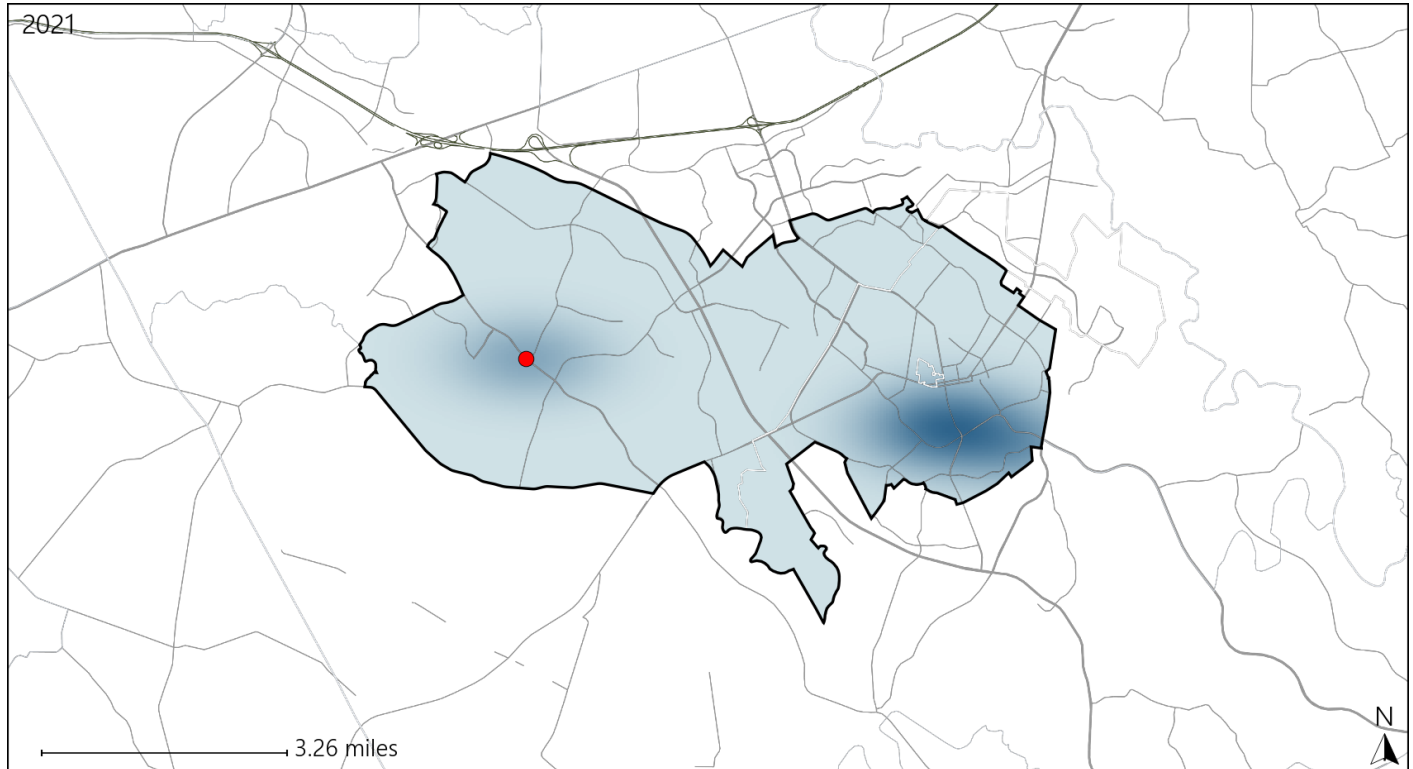


Available Crash Data - Calendar Year (CY)	CY 2018	CY 2019	CY 2020	CY 2021
Total Crashes	1126	949	825	856
Fatalities	7	1	4	6
Injuries	1007	768	635	710
Unrestrained Fatalities	0	0	2	2
Percent of Unrestrained Fatalities to Total Fatalities	0%	0%	50%	33%
Unrestrained Injuries	14	11	23	25
Percent of Unrestrained Injuries to Total Injuries	1%	1%	4%	4%

Virginia House District 50 Bicycle Crash Statistics

Report Generated April, 2022

	Count	Highest Time Period(s)	Highest Day(s)	Highest Month(s)
Fatal Crashes	1	3:00pm - 5:59pm	Tuesday	August
Bicycle Fatalities	1	(100%)	(100%)	(100%)
Serious Injury Crashes	0	-	-	-



House District 50 Bicycle-Related Crashes

Interstate Crashes

Non-interstate Crashes

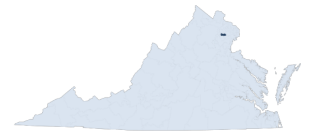
● Fatal

● Fatal

● Serious Injury

● Serious Injury

The blue gradient represents the density of all bicycle-related crashes.

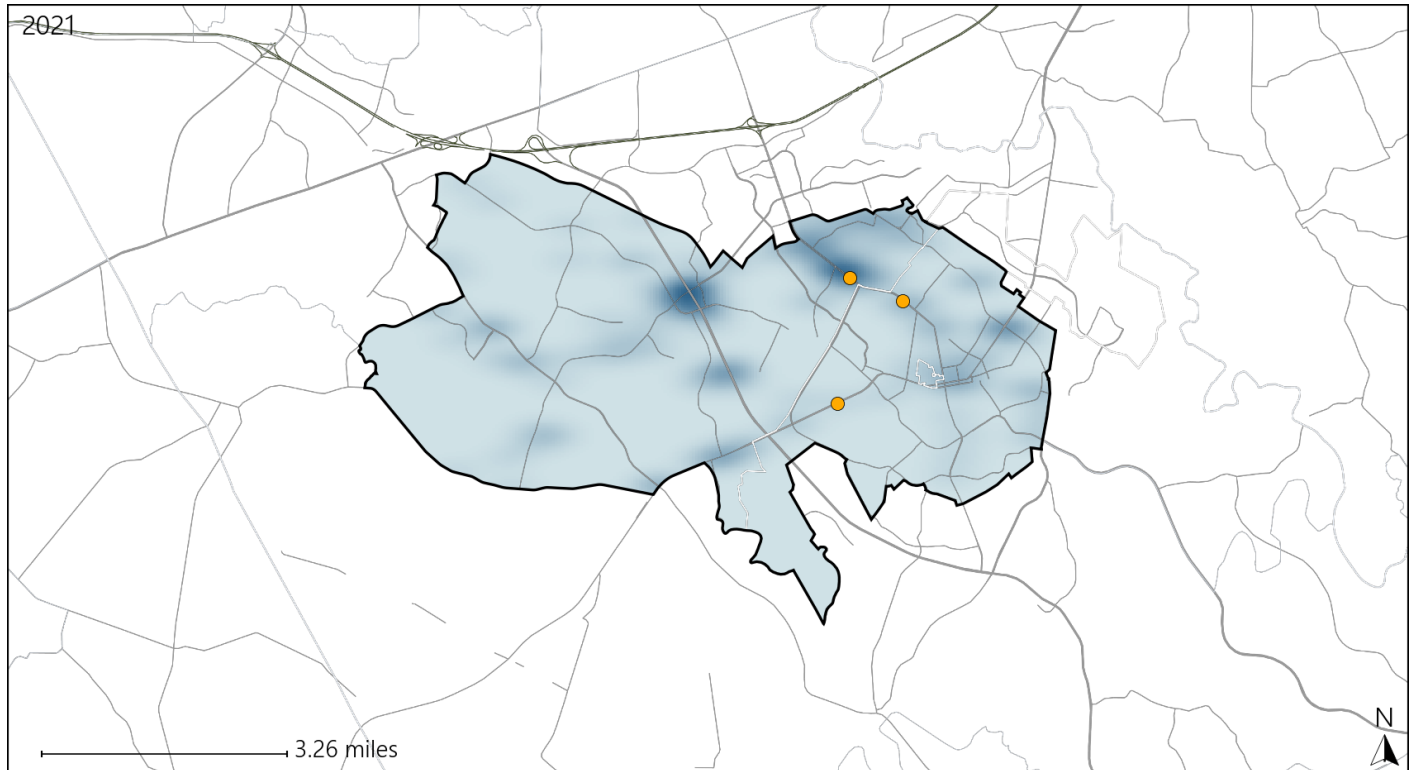


Available Crash Data - Calendar Year (CY)	CY 2018	CY 2019	CY 2020	CY 2021
Total Crashes	1126	949	825	856
Fatal Crashes	7	1	4	6
Injury Crashes	564	450	372	395
Bicycle-Related Fatal Crashes	0	0	0	1
Percent of Bicycle-Related Fatal Crashes to Total Fatal Crashes	0%	0%	0%	17%
Bicycle-Related Injury Crashes	13	4	11	3
Percent of Bicycle-Related Injury Crashes to Total Injury Crashes	2%	1%	3%	1%

Virginia House District 50 Distracted Driving Crash Statistics

Report Generated April, 2022

	Count	Highest Time Period(s)	Highest Day(s)	Highest Month(s)
Fatal Crashes	0	-	-	-
Resulting Fatalities	0			
Serious Injury Crashes	3	9:00pm - 11:59pm (67%)	Saturday • Sunday (66%)	December • July (66%)



House District 50 Distracted Driving-Related Crashes

Interstate Crashes

Non-interstate Crashes

- Fatal
- Serious Injury

- Fatal
- Serious Injury

The blue gradient represents the density of all distracted driving-related crashes.



Available Crash Data - Calendar Year (CY)	CY 2018	CY 2019	CY 2020	CY 2021
Total Crashes	1126	949	825	856
Fatal Crashes	7	1	4	6
Injury Crashes	564	450	372	395
Distracted Driving-Related Fatal Crashes	1	1	0	0
Percent of Distracted Driving-Related Fatal Crashes to Total Fatal Crashes	14%	100%	0%	0%
Distracted Driving-Related Injury Crashes	113	108	83	73
Percent of Distracted Driving-Related Injury Crashes to Total Injury Crashes	20%	24%	22%	18%