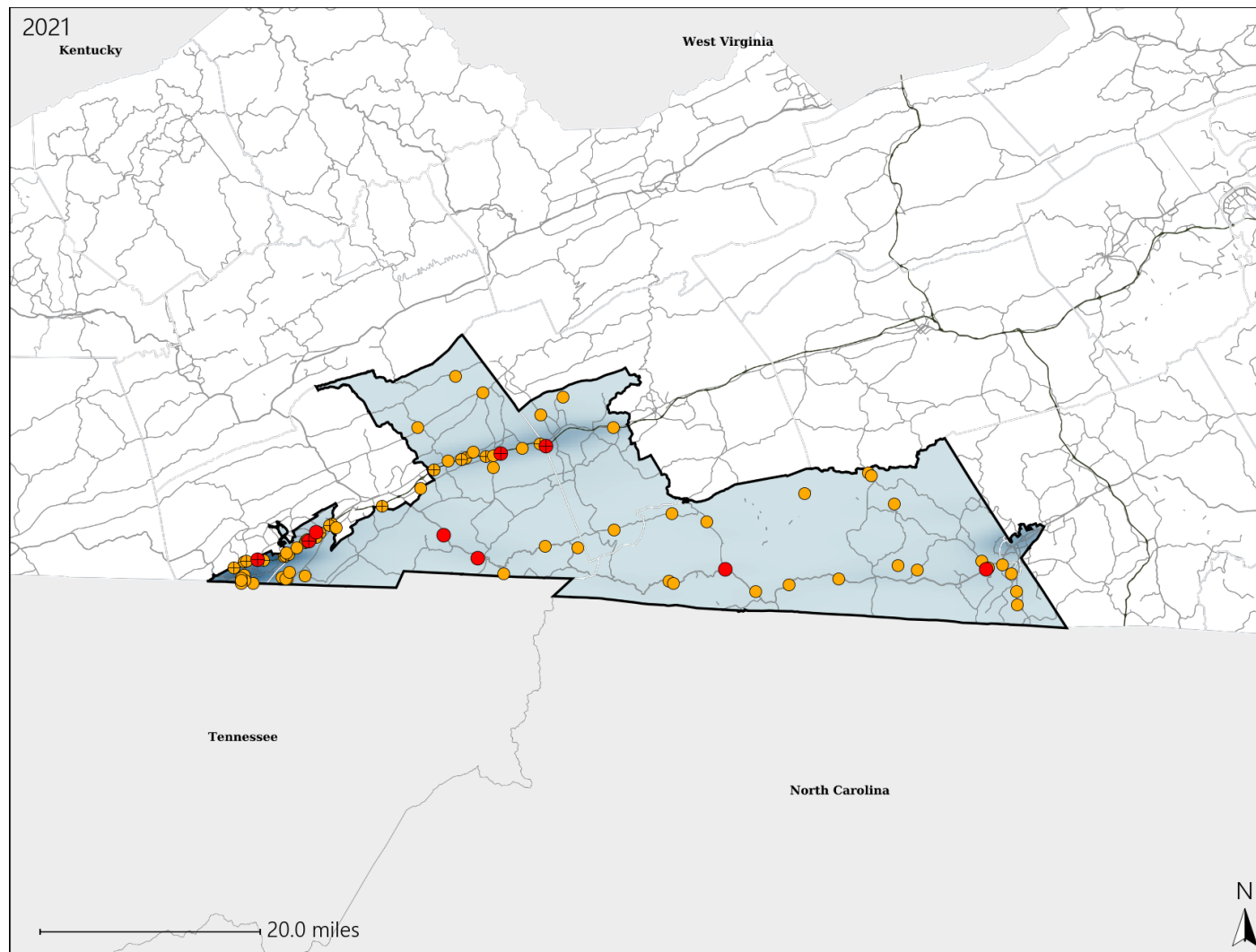


Report of Crashes for January 1st - December 31st, 2021

Virginia House District 5 Crash Statistics

Report Generated April, 2022

	Count	Highest Time Period(s)	Highest Day(s)	Highest Month(s)
Fatal Crashes	9	3:00pm - 5:59pm	Friday • Monday	August • February
Resulting Fatalities	10	(33%)	(44%)	(44%)
Serious Injury Crashes	70	3:00pm - 5:59pm	Saturday	June • May
		(20%)	(17%)	(32%)



House District 5 Crashes

Interstate Crashes

- Fatal
- Serious Injury

Non-interstate Crashes

- Fatal
- Serious Injury

The blue gradient represents the density of all crashes.

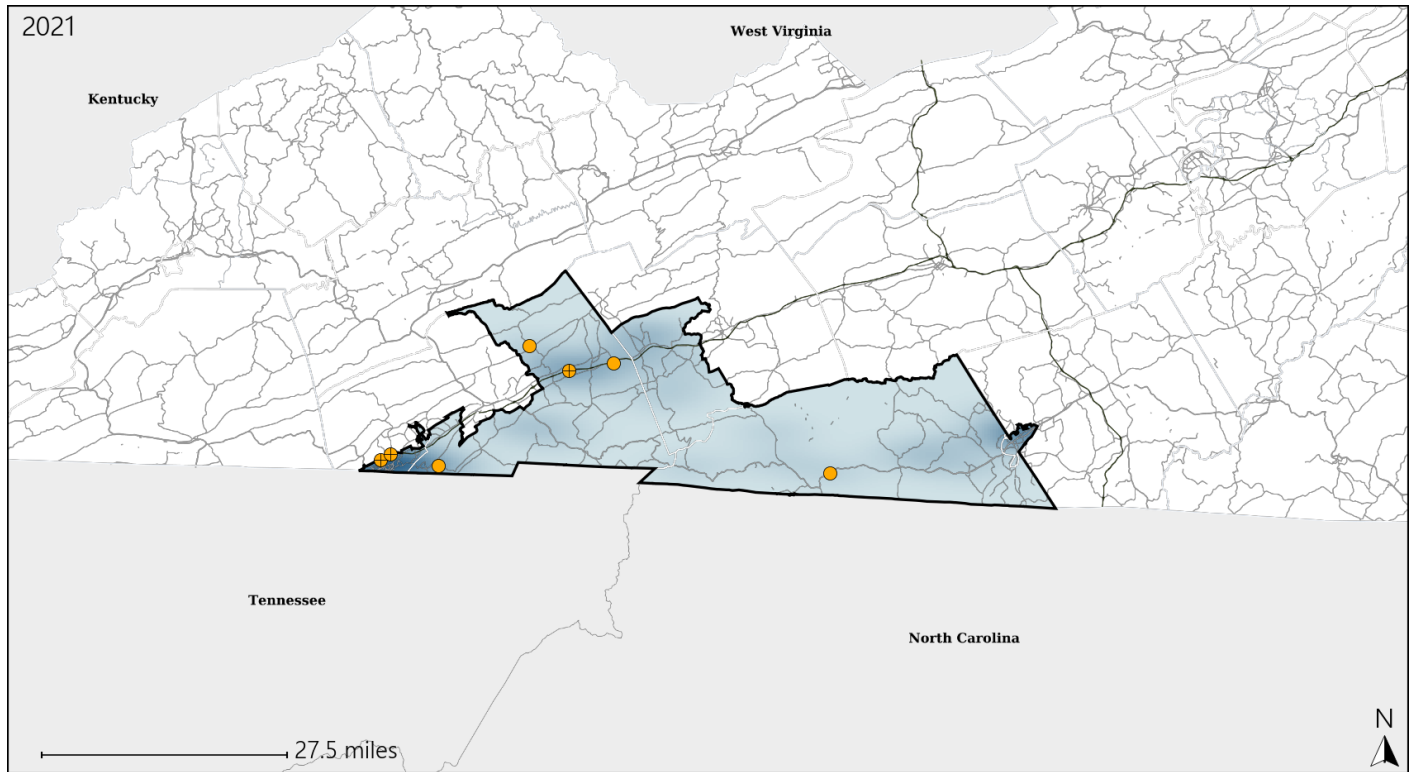


Available Crash Data - Calendar Year (CY)	CY 2018	CY 2019	CY 2020	CY 2021
Total Crashes	1411	1345	1258	1351
Fatal Crashes	8	11	12	9
Injury Crashes	448	390	345	365

Virginia House District 5 Alcohol Crash Statistics

Report Generated April, 2022

	Count	Highest Time Period(s)	Highest Day(s)	Highest Month(s)
Fatal Crashes	0	-	-	-
Resulting Fatalities	0	-	-	-
Serious Injury Crashes	7	3:00pm - 5:59pm 9:00pm - 11:59pm (58%)	Saturday (43%)	June (43%)



House District 5 Alcohol-Related Crashes

Interstate Crashes

Non-interstate Crashes

● Fatal

● Fatal

⊕ Serious Injury

● Serious Injury

The blue gradient represents the density of all alcohol-related crashes.

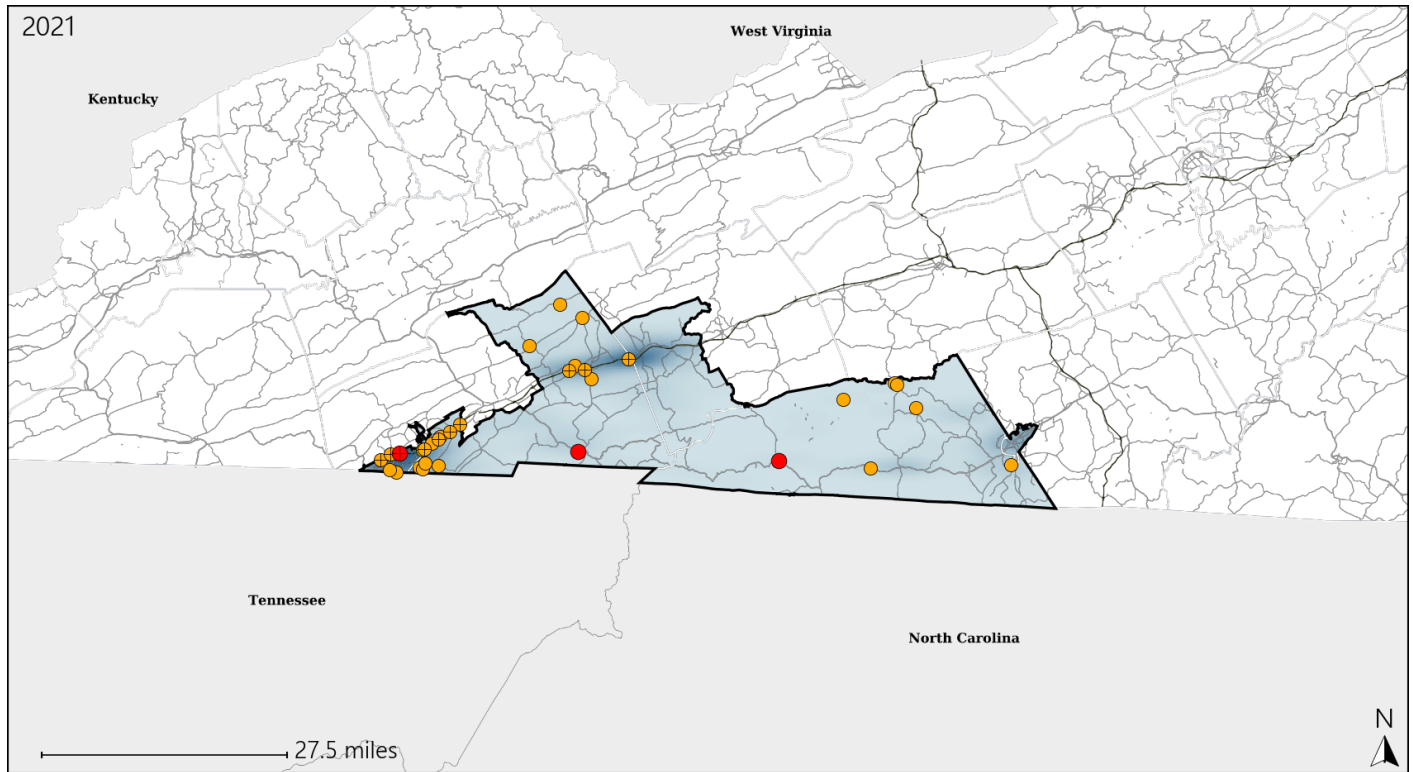


Available Crash Data - Calendar Year (CY)	CY 2018	CY 2019	CY 2020	CY 2021
Total Crashes	1411	1345	1258	1351
Fatal Crashes	8	11	12	9
Injury Crashes	448	390	345	365
Alcohol-Related Fatal Crashes	5	3	8	0
Percent of Alcohol-Related Fatal Crashes to Total Fatal Crashes	63%	27%	67%	0%
Alcohol-Related Injury Crashes	23	30	29	15
Percent of Alcohol-Related Injury Crashes to Total Injury Crashes	5%	8%	8%	4%

Virginia House District 5 Speed Crash Statistics

Report Generated April, 2022

	Count	Highest Time Period(s)	Highest Day(s)	Highest Month(s)
Fatal Crashes	3	6:00pm - 8:59pm	Monday	August • February
Resulting Fatalities	4	(67%)	(67%)	(66%)
Serious Injury Crashes	29	3:00pm - 5:59pm	Saturday	October
		6:00pm - 8:59pm	(28%)	(21%)
		(42%)		



House District 5 Speed-Related Crashes

Interstate Crashes

Non-interstate Crashes

● Fatal

● Fatal

⊕ Serious Injury

⊕ Serious Injury

The blue gradient represents the density of all speed-related crashes.

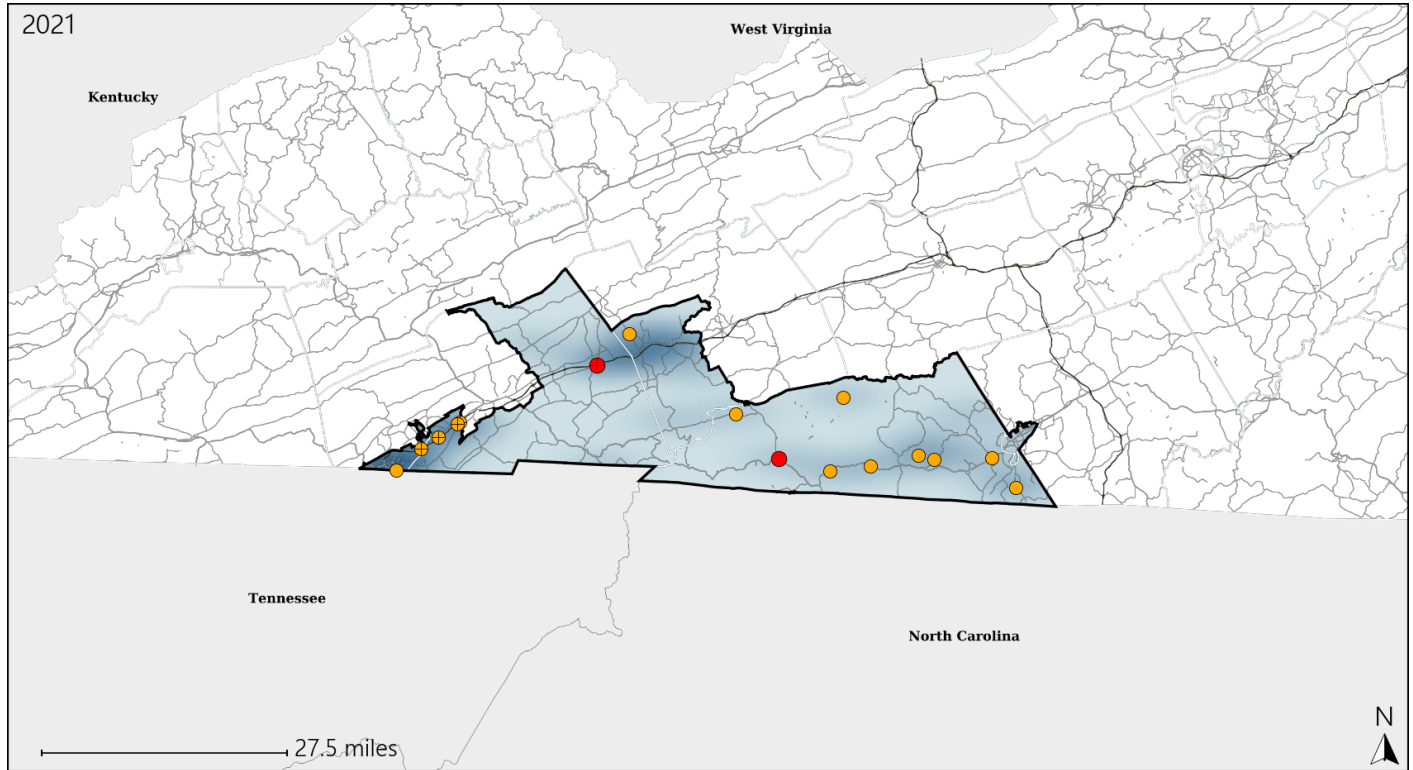


Available Crash Data - Calendar Year (CY)	CY 2018	CY 2019	CY 2020	CY 2021
Total Crashes	1411	1345	1258	1351
Fatal Crashes	8	11	12	9
Injury Crashes	448	390	345	365
Speed-Related Fatal Crashes	5	5	6	3
Percent of Speed-Related Fatal Crashes to Total Fatal Crashes	63%	45%	50%	33%
Speed-Related Injury Crashes	117	120	116	115
Percent of Speed-Related Injury Crashes to Total Injury Crashes	26%	31%	34%	32%

Virginia House District 5 Unrestrained Crash Statistics

Report Generated April, 2022

	Count	Highest Time Period(s)	Highest Day(s)	Highest Month(s)
Fatal Crashes	2	3:00pm - 5:59pm	Monday • Saturday	February • May
Unrestrained Fatalities	3	9:00am - 11:59am (100%)	(100%)	(100%)
Serious Injury Crashes	14	6:00pm - 8:59pm (36%)	Thursday • Tuesday (58%)	December • June (58%)



House District 5 Unrestrained-Related Crashes

Interstate Crashes

Non-interstate Crashes

- Fatal
- Serious Injury

- Fatal
- Serious Injury

The blue gradient represents the density of all unrestrained-related crashes.



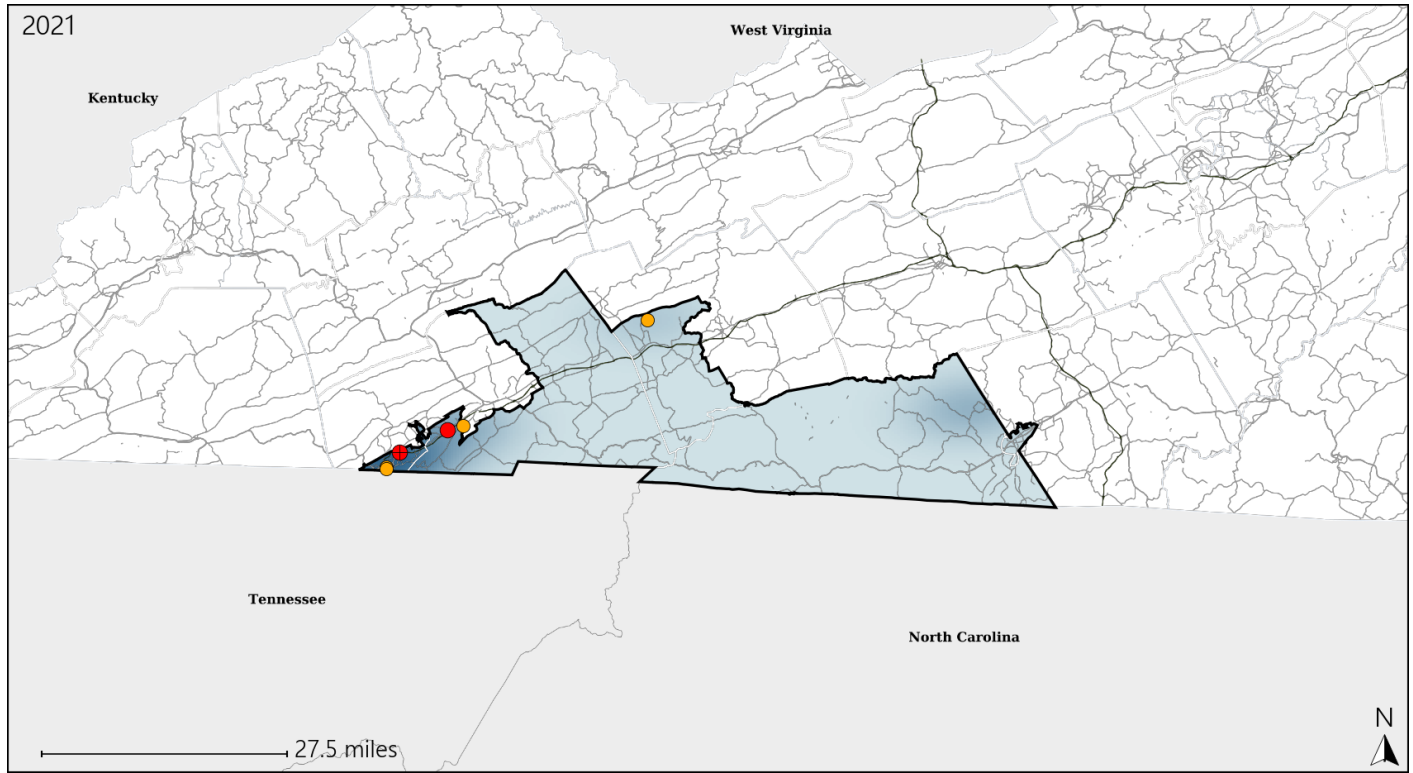
Available Crash Data - Calendar Year (CY)	CY 2018	CY 2019	CY 2020	CY 2021
Total Crashes	1411	1345	1258	1351
Fatalities	8	11	12	10
Injuries	611	554	469	481
Unrestrained Fatalities	5	3	6	3
Percent of Unrestrained Fatalities to Total Fatalities	63%	27%	50%	30%
Unrestrained Injuries	41	37	54	43
Percent of Unrestrained Injuries to Total Injuries	7%	7%	12%	9%

Report of Crashes for January 1st - December 31st, 2021

Virginia House District 5 Pedestrian Crash Statistics

Report Generated April, 2022

	Count	Highest Time Period(s)	Highest Day(s)	Highest Month(s)
Fatal Crashes	2	3:00pm - 5:59pm	Monday • Sunday	February • November
Pedestrian Fatalities	2	6:00pm - 8:59pm (100%)	(100%)	(100%)
Serious Injury Crashes	4	6:00am - 8:59am 6:00pm - 8:59pm (50%)	Friday • Monday (100%)	June • March (50%)



House District 5 Pedestrian-Related Crashes

Interstate Crashes

Non-interstate Crashes

● Fatal

● Fatal

⊕ Serious Injury

⊕ Serious Injury

The blue gradient represents the density of all pedestrian-related crashes.

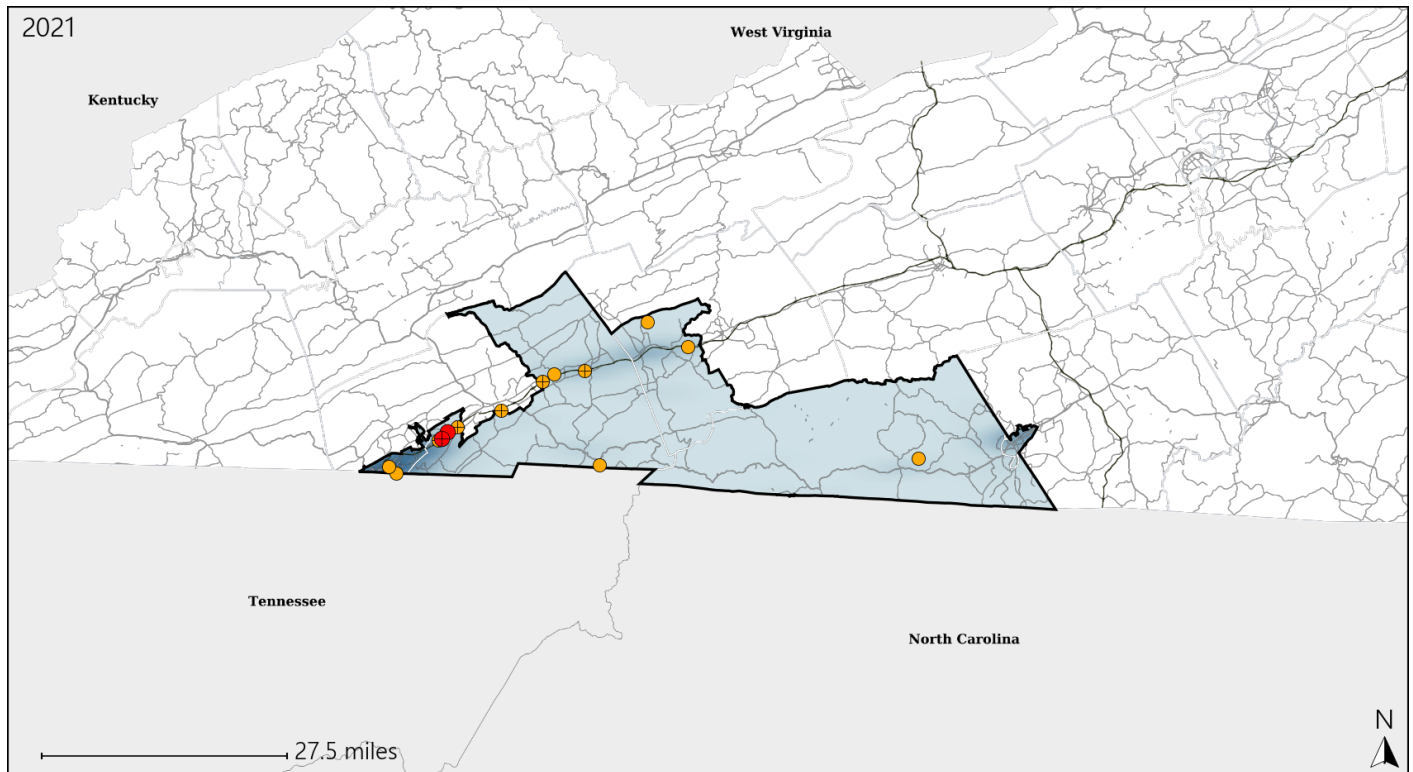


Available Crash Data - Calendar Year (CY)	CY 2018	CY 2019	CY 2020	CY 2021
Total Crashes	1411	1345	1258	1351
Fatal Crashes	8	11	12	9
Injury Crashes	448	390	345	365
Pedestrian-Related Fatal Crashes	0	2	0	2
Percent of Pedestrian-Related Fatal Crashes to Total Fatal Crashes	0%	18%	0%	22%
Pedestrian-Related Injury Crashes	10	9	7	8
Percent of Pedestrian-Related Injury Crashes to Total Injury Crashes	2%	2%	2%	2%

Virginia House District 5 Distracted Driving Crash Statistics

Report Generated April, 2022

	Count	Highest Time Period(s)	Highest Day(s)	Highest Month(s)
Fatal Crashes	2	3:00am - 5:59am	Sunday • Thursday	February • October
Resulting Fatalities	2	3:00pm - 5:59pm (100%)	(100%)	(100%)
Serious Injury Crashes	12	6:00am - 8:59am 6:00pm - 8:59pm (50%)	Monday (25%)	December • October (50%)



House District 5 Distracted Driving-Related Crashes

Interstate Crashes

Non-interstate Crashes

● Fatal

● Fatal

⊕ Serious Injury

⊕ Serious Injury

The blue gradient represents the density of all distracted driving-related crashes.



Available Crash Data - Calendar Year (CY)	CY 2018	CY 2019	CY 2020	CY 2021
Total Crashes	1411	1345	1258	1351
Fatal Crashes	8	11	12	9
Injury Crashes	448	390	345	365
Distracted Driving-Related Fatal Crashes	2	3	0	2
Percent of Distracted Driving-Related Fatal Crashes to Total Fatal Crashes	25%	27%	0%	22%
Distracted Driving-Related Injury Crashes	79	63	59	75
Percent of Distracted Driving-Related Injury Crashes to Total Injury Crashes	18%	16%	17%	21%