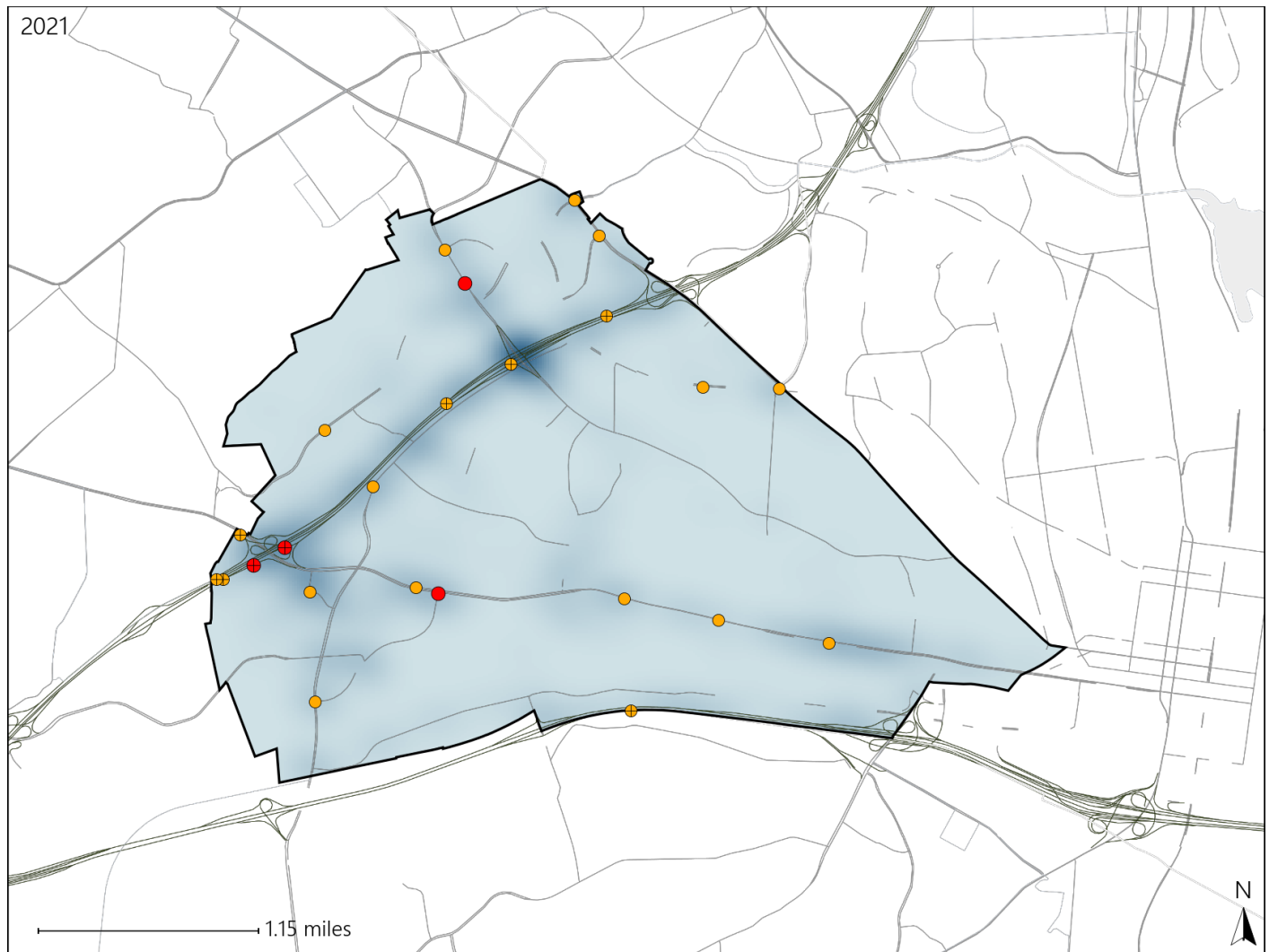


# Virginia House District 46 Crash Statistics

Report Generated April, 2022

	Count	Highest Time Period(s)	Highest Day(s)	Highest Month(s)
<b>Fatal Crashes</b>	<b>4</b>	3:00pm - 5:59pm	Sunday	September
<b>Resulting Fatalities</b>	<b>4</b>	6:00am - 8:59am (50%)	(50%)	(50%)
<b>Serious Injury Crashes</b>	<b>20</b>	Noon - 2:59pm (30%)	Thursday (30%)	November + October (30%)



## House District 46 Crashes

### Interstate Crashes

- Fatal
- Serious Injury

### Non-interstate Crashes

- Fatal
- Serious Injury

The blue gradient represents the density of all crashes.

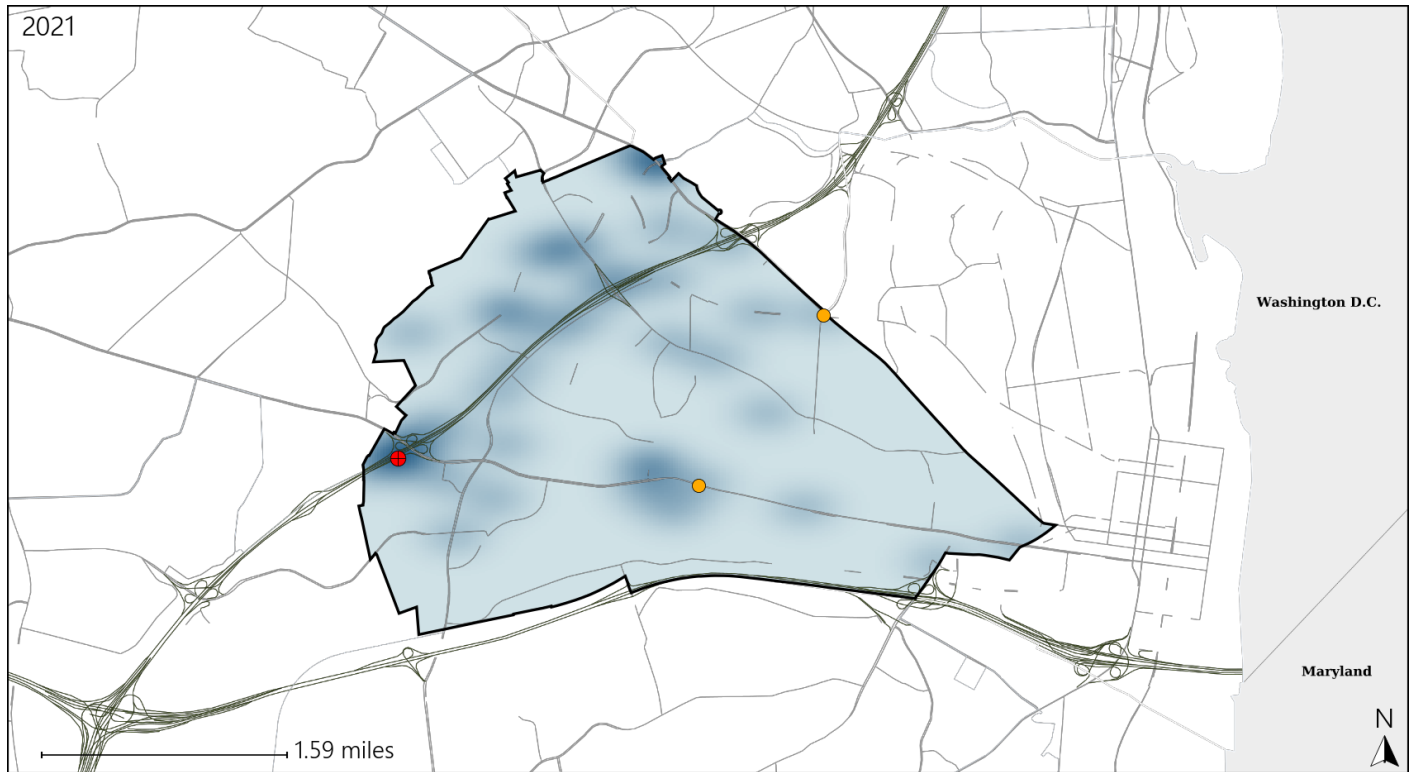


Available Crash Data - Calendar Year (CY)	CY 2018	CY 2019	CY 2020	CY 2021
Total Crashes	1065	970	642	721
Fatal Crashes	6	4	3	4
Injury Crashes	350	291	182	207

# Virginia House District 46 Alcohol Crash Statistics

Report Generated April, 2022



	Count	Highest Time Period(s)	Highest Day(s)	Highest Month(s)
<b>Fatal Crashes</b>	<b>1</b>	<b>9:00pm - 11:59pm</b>	<b>Sunday</b>	<b>September</b>
<b>Resulting Fatalities</b>	<b>1</b>	<b>(100%)</b>	<b>(100%)</b>	<b>(100%)</b>
<b>Serious Injury Crashes</b>	<b>2</b>	<b>9:00pm - 11:59pm</b>	<b>Saturday</b>	<b>July • June</b>
		<b>Midnight - 2:59am</b>	<b>(100%)</b>	<b>(100%)</b>



## House District 46 Alcohol-Related Crashes

Interstate Crashes

Non-interstate Crashes

 Fatal Fatal Serious Injury Serious Injury

The blue gradient represents the density of all alcohol-related crashes.



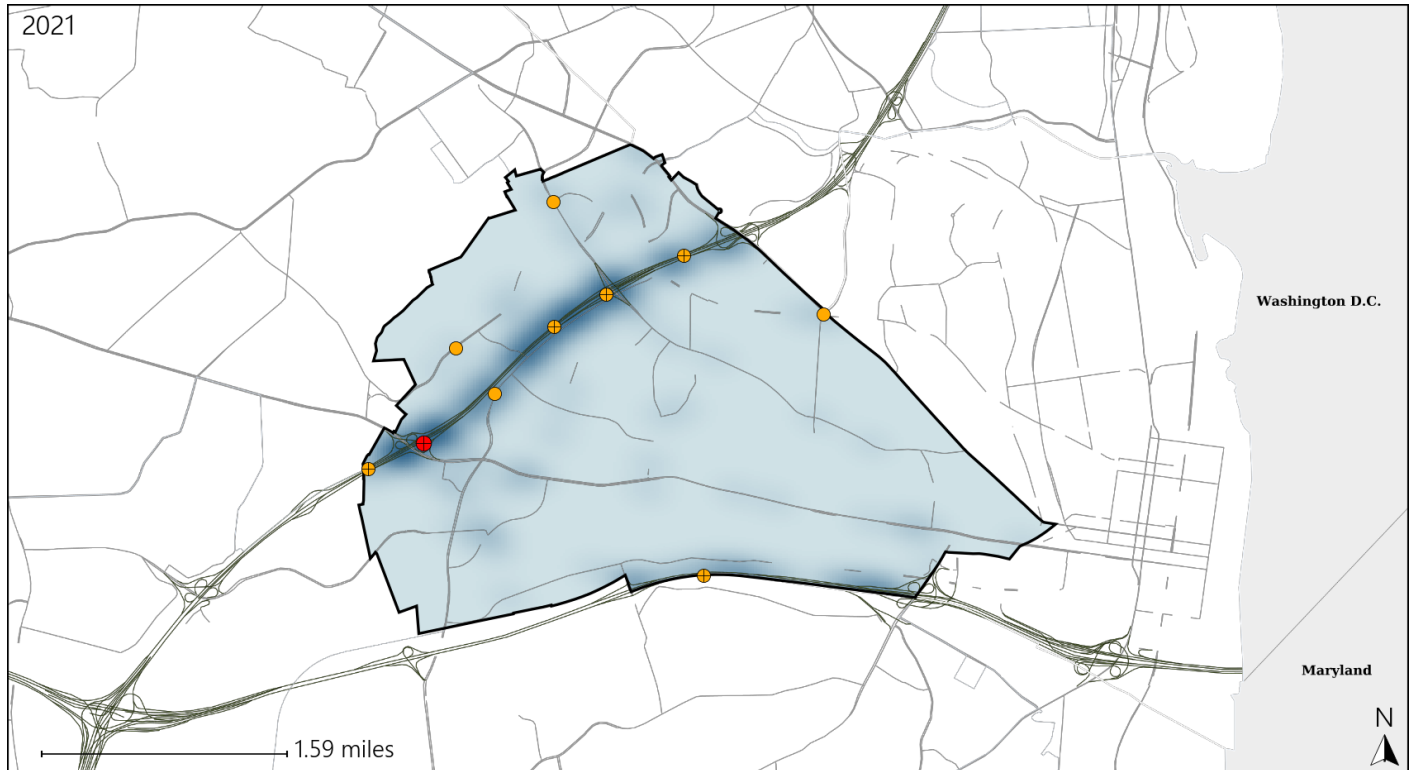
Available Crash Data - Calendar Year (CY)	CY 2018	CY 2019	CY 2020	CY 2021
Total Crashes	1065	970	642	721
Fatal Crashes	6	4	3	4
Injury Crashes	350	291	182	207
Alcohol-Related Fatal Crashes	4	1	0	1
Percent of Alcohol-Related Fatal Crashes to Total Fatal Crashes	67%	25%	0%	25%
Alcohol-Related Injury Crashes	25	18	15	13
Percent of Alcohol-Related Injury Crashes to Total Injury Crashes	7%	6%	8%	6%

Report of Crashes for January 1<sup>st</sup> - December 31<sup>st</sup>, 2021

# Virginia House District 46 Speed Crash Statistics

Report Generated April, 2022

	Count	Highest Time Period(s)	Highest Day(s)	Highest Month(s)
<b>Fatal Crashes</b>	<b>1</b>	<b>3:00pm - 5:59pm</b>	<b>Sunday</b>	<b>November</b>
<b>Resulting Fatalities</b>	<b>1</b>	<b>(100%)</b>	<b>(100%)</b>	<b>(100%)</b>
<b>Serious Injury Crashes</b>	<b>9</b>	<b>Midnight - 2:59am</b>	<b>Saturday • Thursday</b>	<b>November • September</b>
		<b>(44%)</b>	<b>(66%)</b>	<b>(44%)</b>



## House District 46 Speed-Related Crashes

Interstate Crashes

Non-interstate Crashes

● Fatal

● Fatal

● Serious Injury

● Serious Injury

The blue gradient represents the density of all speed-related crashes.

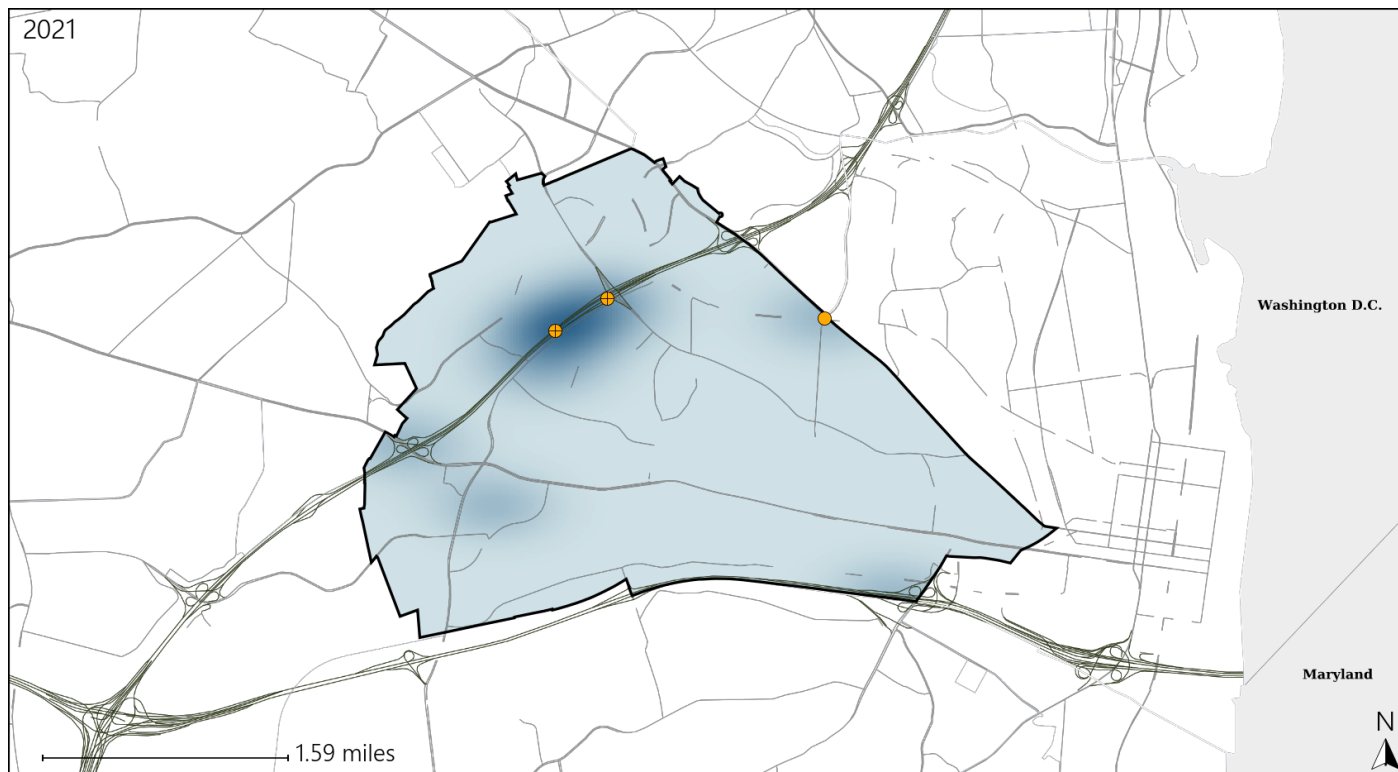


Available Crash Data - Calendar Year (CY)	CY 2018	CY 2019	CY 2020	CY 2021
Total Crashes	1065	970	642	721
Fatal Crashes	6	4	3	4
Injury Crashes	350	291	182	207
Speed-Related Fatal Crashes	4	2	2	1
Percent of Speed-Related Fatal Crashes to Total Fatal Crashes	67%	50%	67%	25%
Speed-Related Injury Crashes	106	65	59	74
Percent of Speed-Related Injury Crashes to Total Injury Crashes	30%	22%	32%	36%

# Virginia House District 46 Unrestrained Crash Statistics

Report Generated April, 2022

	Count	Highest Time Period(s)	Highest Day(s)	Highest Month(s)
<b>Fatal Crashes</b>	<b>0</b>	-	-	-
<b>Unrestrained Fatalities</b>	<b>0</b>	-	-	-
<b>Serious Injury Crashes</b>	<b>3</b>	<b>Midnight - 2:59am</b> (100%)	<b>Monday • Saturday</b> (66%)	<b>January • July</b> (66%)



## House District 46 Unrestrained-Related Crashes

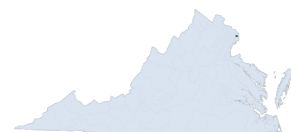
Interstate Crashes

Non-interstate Crashes

- Fatal
- Serious Injury

- Fatal
- Serious Injury

The blue gradient represents the density of all unrestrained-related crashes.



Available Crash Data - Calendar Year (CY)	CY 2018	CY 2019	CY 2020	CY 2021
<b>Total Crashes</b>	<b>1065</b>	<b>970</b>	<b>642</b>	<b>721</b>
<b>Fatalities</b>	<b>7</b>	<b>4</b>	<b>3</b>	<b>4</b>
<b>Injuries</b>	<b>509</b>	<b>465</b>	<b>270</b>	<b>310</b>
<b>Unrestrained Fatalities</b>	<b>0</b>	<b>2</b>	<b>1</b>	<b>0</b>
<b>Percent of Unrestrained Fatalities to Total Fatalities</b>	<b>0%</b>	<b>50%</b>	<b>33%</b>	<b>0%</b>
<b>Unrestrained Injuries</b>	<b>9</b>	<b>13</b>	<b>13</b>	<b>9</b>
<b>Percent of Unrestrained Injuries to Total Injuries</b>	<b>2%</b>	<b>3%</b>	<b>5%</b>	<b>3%</b>

Report of Crashes for January 1<sup>st</sup> - December 31<sup>st</sup>, 2021

# Virginia House District 46 Pedestrian Crash Statistics

Report Generated April, 2022

	Count	Highest Time Period(s)	Highest Day(s)	Highest Month(s)
<b>Fatal Crashes</b>	<b>2</b>	6:00am - 8:59am	Friday • Wednesday	January • September
<b>Pedestrian Fatalities</b>	<b>2</b>	6:00pm - 8:59pm (100%)	(100%)	(100%)
<b>Serious Injury Crashes</b>	<b>3</b>	3:00pm - 5:59pm 9:00am - 11:59am (66%)	Friday • Monday (66%)	December • March (66%)



## House District 46 Pedestrian-Related Crashes

Interstate Crashes

Non-interstate Crashes

● Fatal

● Fatal

⊕ Serious Injury

⊕ Serious Injury

The blue gradient represents the density of all pedestrian-related crashes.

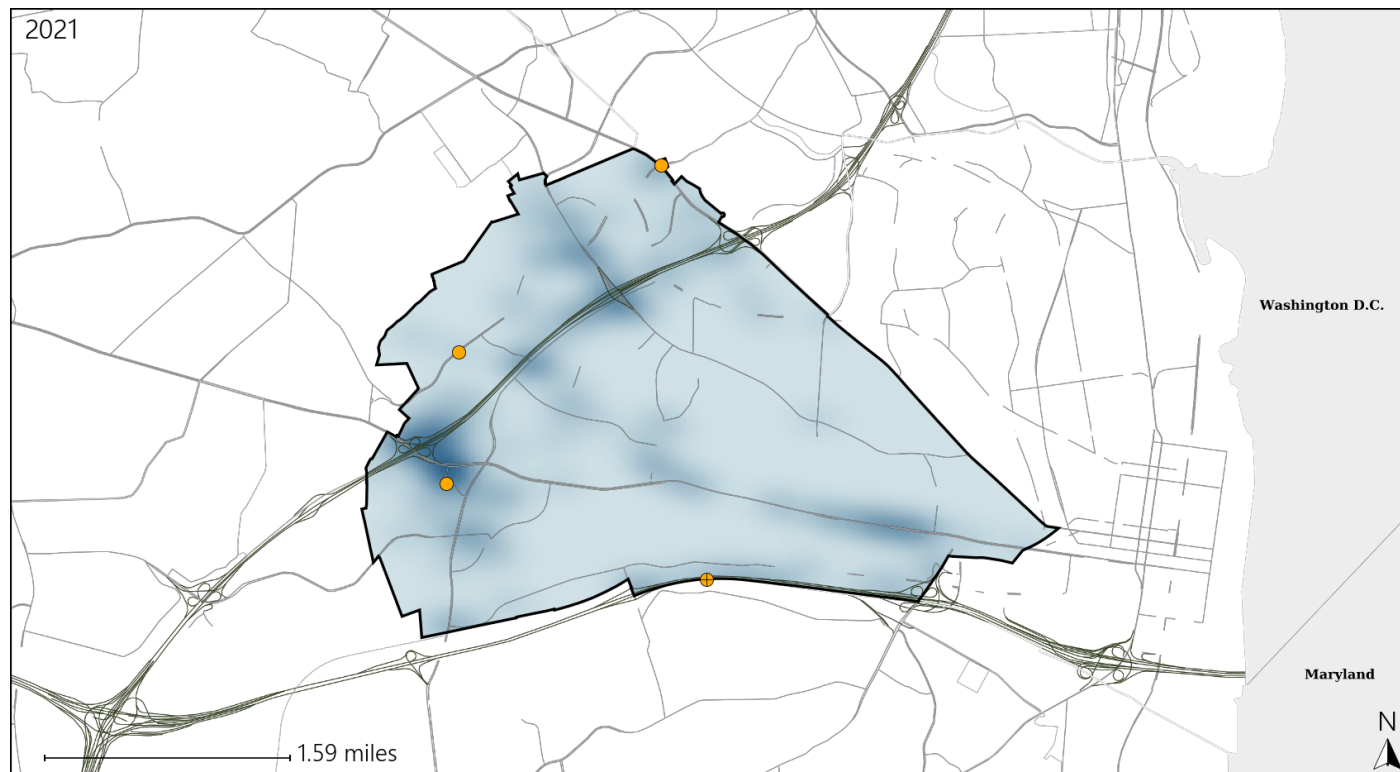


Available Crash Data - Calendar Year (CY)	CY 2018	CY 2019	CY 2020	CY 2021
Total Crashes	1065	970	642	721
Fatal Crashes	6	4	3	4
Injury Crashes	350	291	182	207
Pedestrian-Related Fatal Crashes	4	2	1	2
Percent of Pedestrian-Related Fatal Crashes to Total Fatal Crashes	67%	50%	33%	50%
Pedestrian-Related Injury Crashes	33	26	22	14
Percent of Pedestrian-Related Injury Crashes to Total Injury Crashes	9%	9%	12%	7%

# Virginia House District 46 Distracted Driving Crash Statistics

Report Generated April, 2022

	Count	Highest Time Period(s)	Highest Day(s)	Highest Month(s)
<b>Fatal Crashes</b>	<b>0</b>	-	-	-
<b>Resulting Fatalities</b>	<b>0</b>	-	-	-
<b>Serious Injury Crashes</b>	<b>4</b>	Noon - 2:59pm (75%)	Friday • Monday (50%)	October (50%)



## House District 46 Distracted Driving-Related Crashes

Interstate Crashes

Non-interstate Crashes

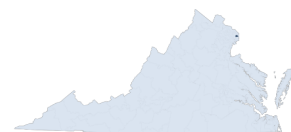
● Fatal

● Fatal

● Serious Injury

● Serious Injury

The blue gradient represents the density of all distracted driving-related crashes.



Available Crash Data - Calendar Year (CY)	CY 2018	CY 2019	CY 2020	CY 2021
Total Crashes	1065	970	642	721
Fatal Crashes	6	4	3	4
Injury Crashes	350	291	182	207
Distracted Driving-Related Fatal Crashes	1	2	0	0
Percent of Distracted Driving-Related Fatal Crashes to Total Fatal Crashes	17%	50%	0%	0%
Distracted Driving-Related Injury Crashes	72	56	33	46
Percent of Distracted Driving-Related Injury Crashes to Total Injury Crashes	21%	19%	18%	22%