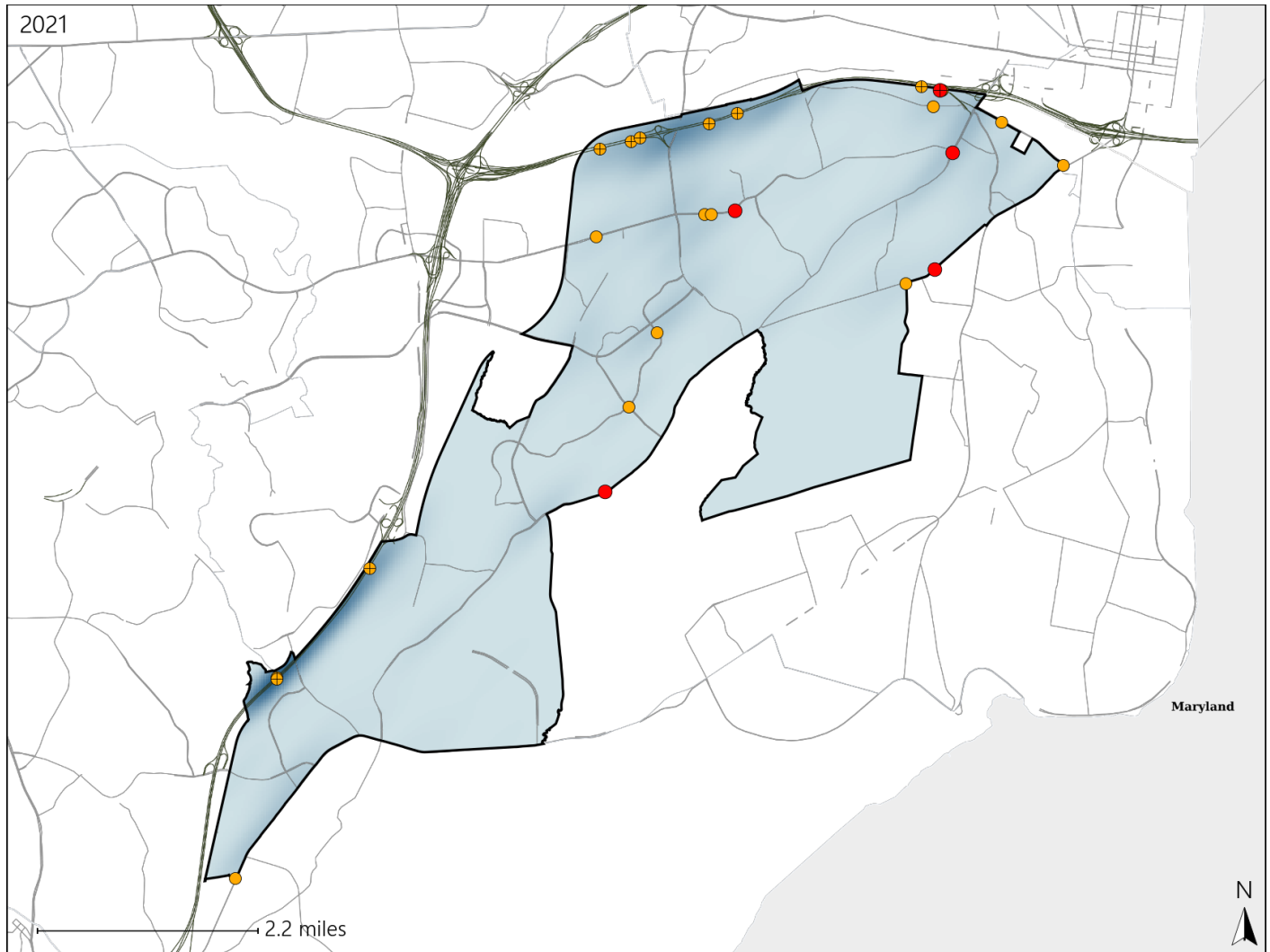


Virginia House District 43 Crash Statistics

Report Generated April, 2022

	Count	Highest Time Period(s)	Highest Day(s)	Highest Month(s)
Fatal Crashes	5	3:00pm - 5:59pm	Monday • Thursday	June
Resulting Fatalities	5	Noon - 2:59pm (80%)	(80%)	(40%)
Serious Injury Crashes	20	Noon - 2:59pm (35%)	Friday • Saturday (40%)	December (20%)



House District 43 Crashes

Interstate Crashes

- Fatal
- Serious Injury

Non-interstate Crashes

- Fatal
- Serious Injury

The blue gradient represents the density of all crashes.

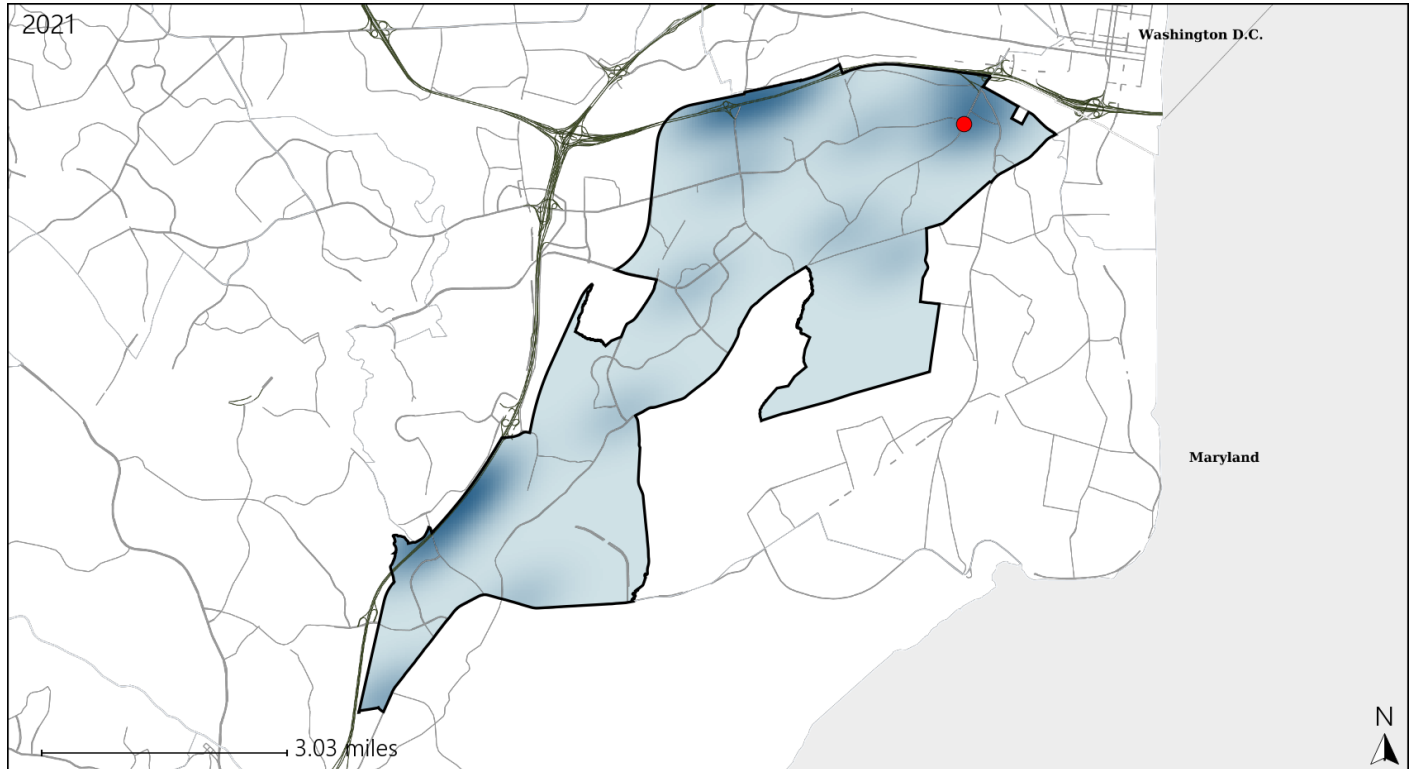


Available Crash Data - Calendar Year (CY)	CY 2018	CY 2019	CY 2020	CY 2021
Total Crashes	844	793	535	618
Fatal Crashes	3	2	3	5
Injury Crashes	265	226	156	174

Virginia House District 43 Alcohol Crash Statistics

Report Generated April, 2022

	Count	Highest Time Period(s)	Highest Day(s)	Highest Month(s)
Fatal Crashes	1	9:00am - 11:59am	Thursday	June
Resulting Fatalities	1	(100%)	(100%)	(100%)
Serious Injury Crashes	0	-	-	-



House District 43 Alcohol-Related Crashes

Interstate Crashes

Non-interstate Crashes

● Fatal

● Fatal

● Serious Injury

● Serious Injury

The blue gradient represents the density of all alcohol-related crashes.

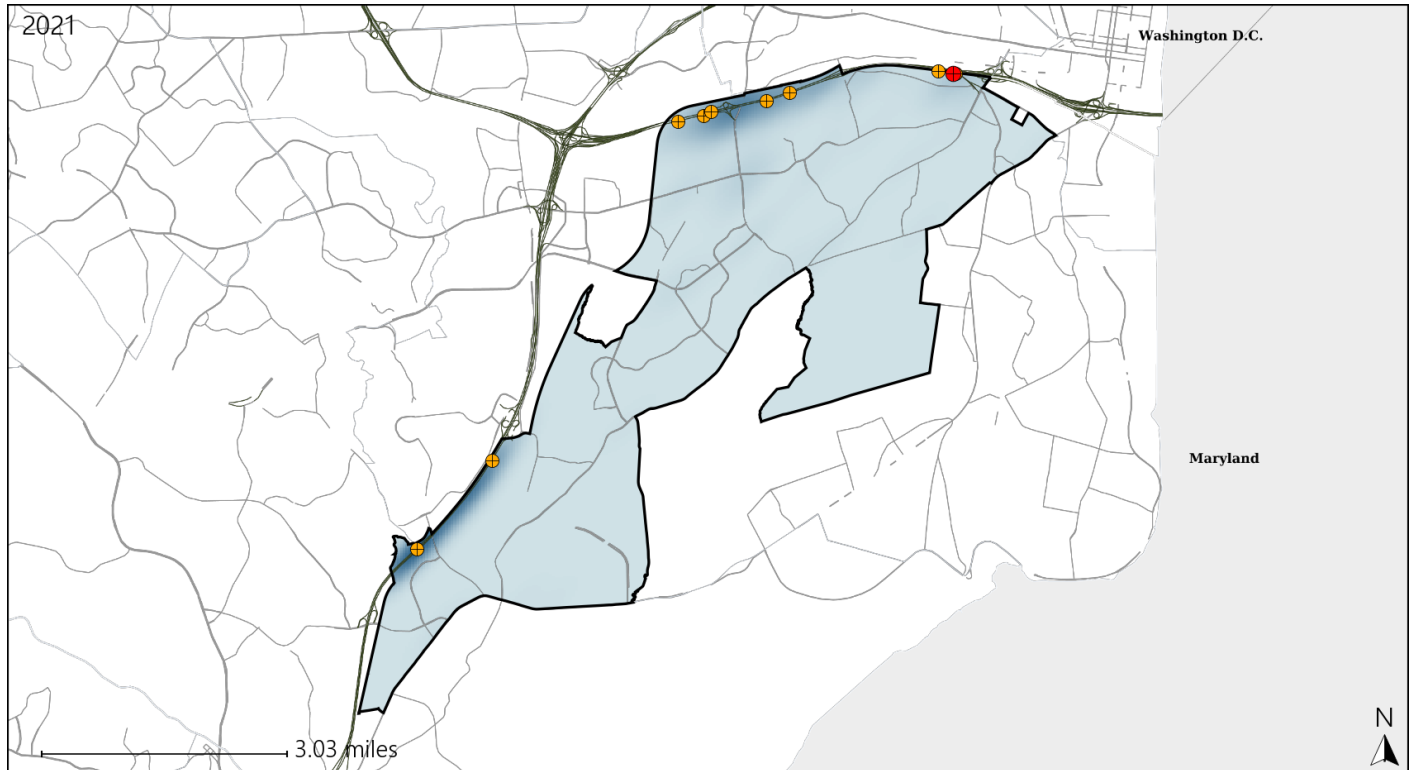


Available Crash Data - Calendar Year (CY)	CY 2018	CY 2019	CY 2020	CY 2021
Total Crashes	844	793	535	618
Fatal Crashes	3	2	3	5
Injury Crashes	265	226	156	174
Alcohol-Related Fatal Crashes	1	2	0	1
Percent of Alcohol-Related Fatal Crashes to Total Fatal Crashes	33%	100%	0%	20%
Alcohol-Related Injury Crashes	7	11	6	13
Percent of Alcohol-Related Injury Crashes to Total Injury Crashes	3%	5%	4%	7%

Virginia House District 43 Speed Crash Statistics

Report Generated April, 2022

	Count	Highest Time Period(s)	Highest Day(s)	Highest Month(s)
Fatal Crashes	1	3:00pm - 5:59pm	Monday	July
Resulting Fatalities	1	(100%)	(100%)	(100%)
Serious Injury Crashes	9	Noon - 2:59pm	Saturday	August • December
		(44%)	(33%)	(44%)



House District 43 Speed-Related Crashes

Interstate Crashes

Non-interstate Crashes

- Fatal
- Serious Injury

- Fatal
- Serious Injury

The blue gradient represents the density of all speed-related crashes.

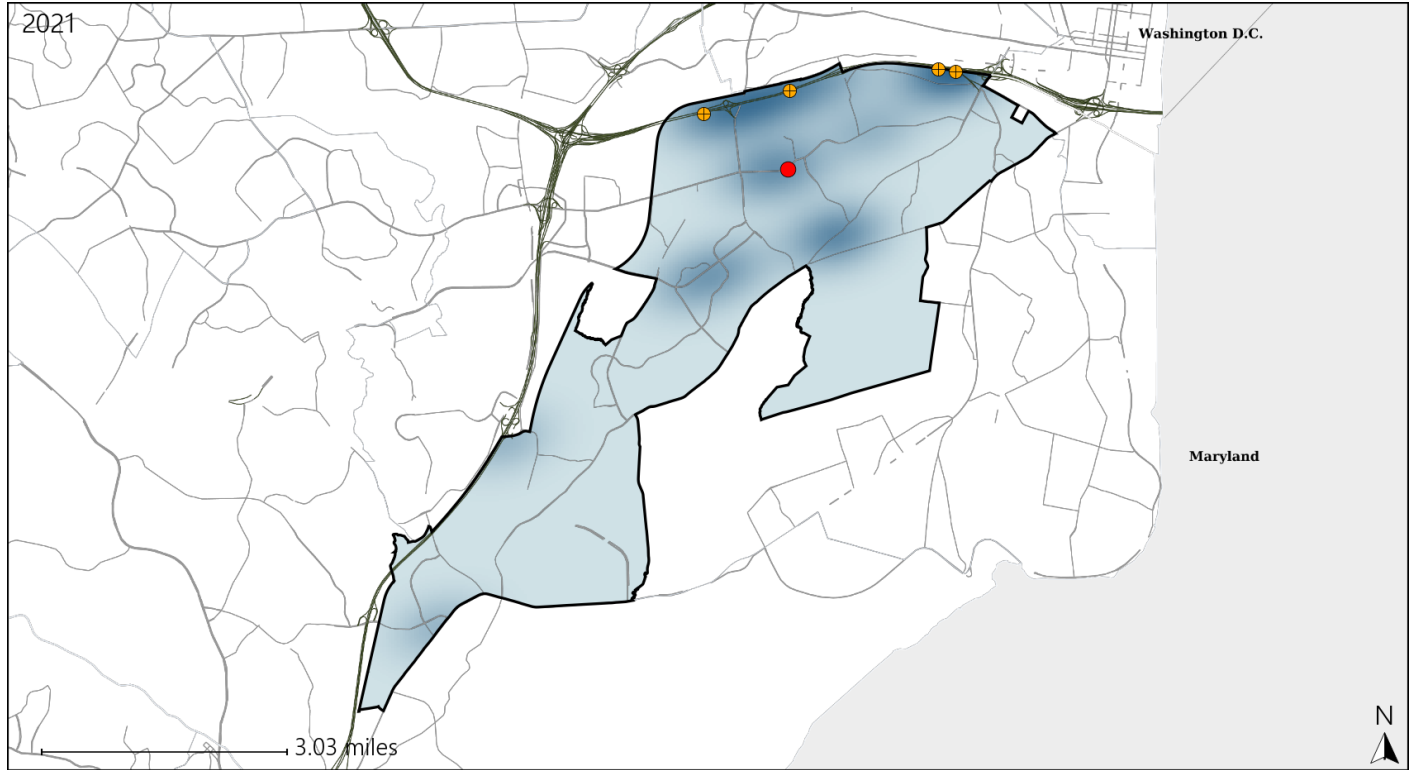


Available Crash Data - Calendar Year (CY)	CY 2018	CY 2019	CY 2020	CY 2021
Total Crashes	844	793	535	618
Fatal Crashes	3	2	3	5
Injury Crashes	265	226	156	174
Speed-Related Fatal Crashes	3	2	1	1
Percent of Speed-Related Fatal Crashes to Total Fatal Crashes	100%	100%	33%	20%
Speed-Related Injury Crashes	74	76	45	74
Percent of Speed-Related Injury Crashes to Total Injury Crashes	28%	34%	29%	43%

Virginia House District 43 Unrestrained Crash Statistics

Report Generated April, 2022

	Count	Highest Time Period(s)	Highest Day(s)	Highest Month(s)
Fatal Crashes	1	Noon - 2:59pm	Monday	October
Unrestrained Fatalities	1	(100%)	(100%)	(100%)
Serious Injury Crashes	4	Noon - 2:59pm	Tuesday	August • December
		(50%)	(50%)	(50%)



House District 43 Unrestrained-Related Crashes

Interstate Crashes

Non-interstate Crashes

- Fatal
- Serious Injury

- Fatal
- Serious Injury

The blue gradient represents the density of all unrestrained-related crashes.



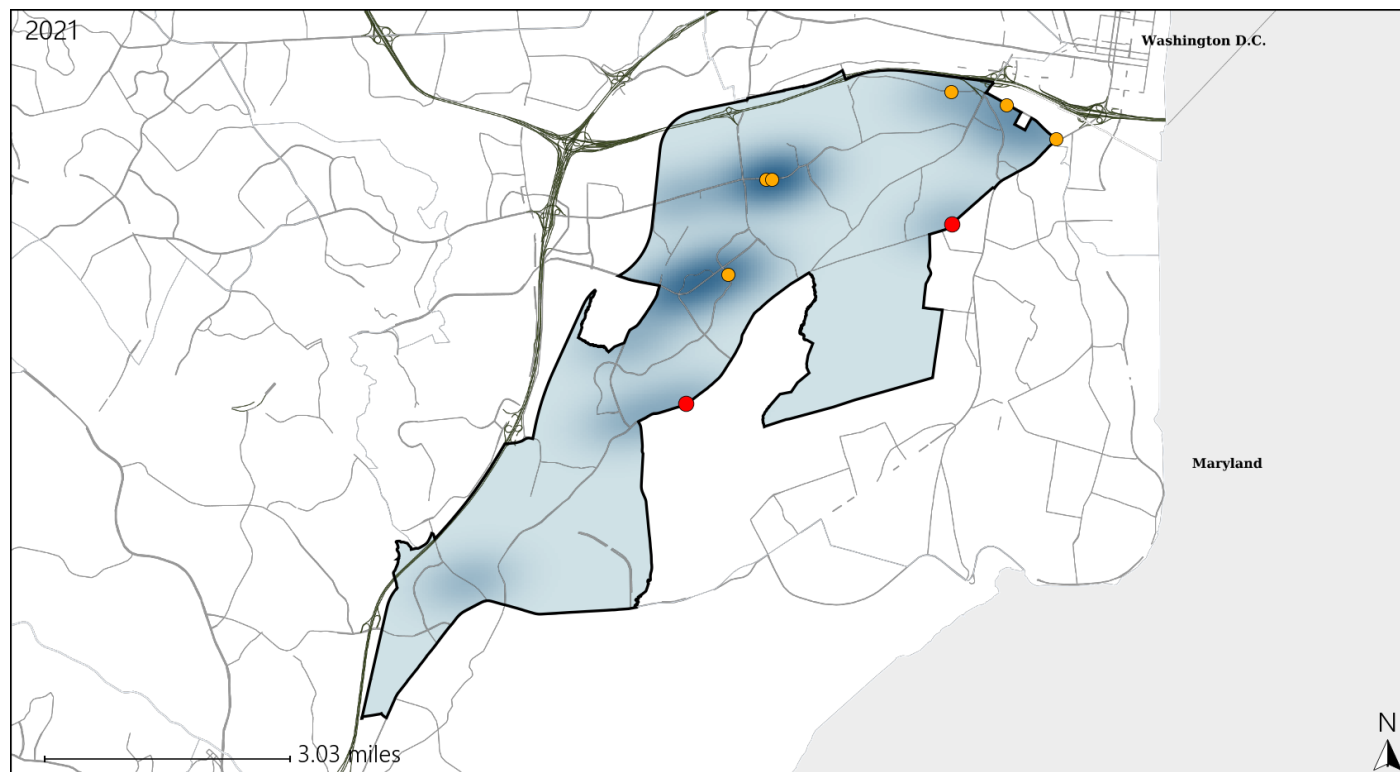
Available Crash Data - Calendar Year (CY)	CY 2018	CY 2019	CY 2020	CY 2021
Total Crashes	844	793	535	618
Fatalities	3	2	3	5
Injuries	404	343	225	294
Unrestrained Fatalities	0	1	1	1
Percent of Unrestrained Fatalities to Total Fatalities	0%	50%	33%	20%
Unrestrained Injuries	7	7	4	16
Percent of Unrestrained Injuries to Total Injuries	2%	2%	2%	5%

Report of Crashes for January 1st - December 31st, 2021

Virginia House District 43 Pedestrian Crash Statistics

Report Generated April, 2022

	Count	Highest Time Period(s)	Highest Day(s)	Highest Month(s)
Fatal Crashes	2	3:00pm - 5:59pm	Friday • Thursday	February • June
Pedestrian Fatalities	2	Noon - 2:59pm (100%)	(100%)	(100%)
Serious Injury Crashes	6	6:00pm - 8:59pm (50%)	Wednesday (33%)	December • September (66%)



House District 43 Pedestrian-Related Crashes

Interstate Crashes

Non-interstate Crashes

● Fatal

● Fatal

● Serious Injury

● Serious Injury

The blue gradient represents the density of all pedestrian-related crashes.

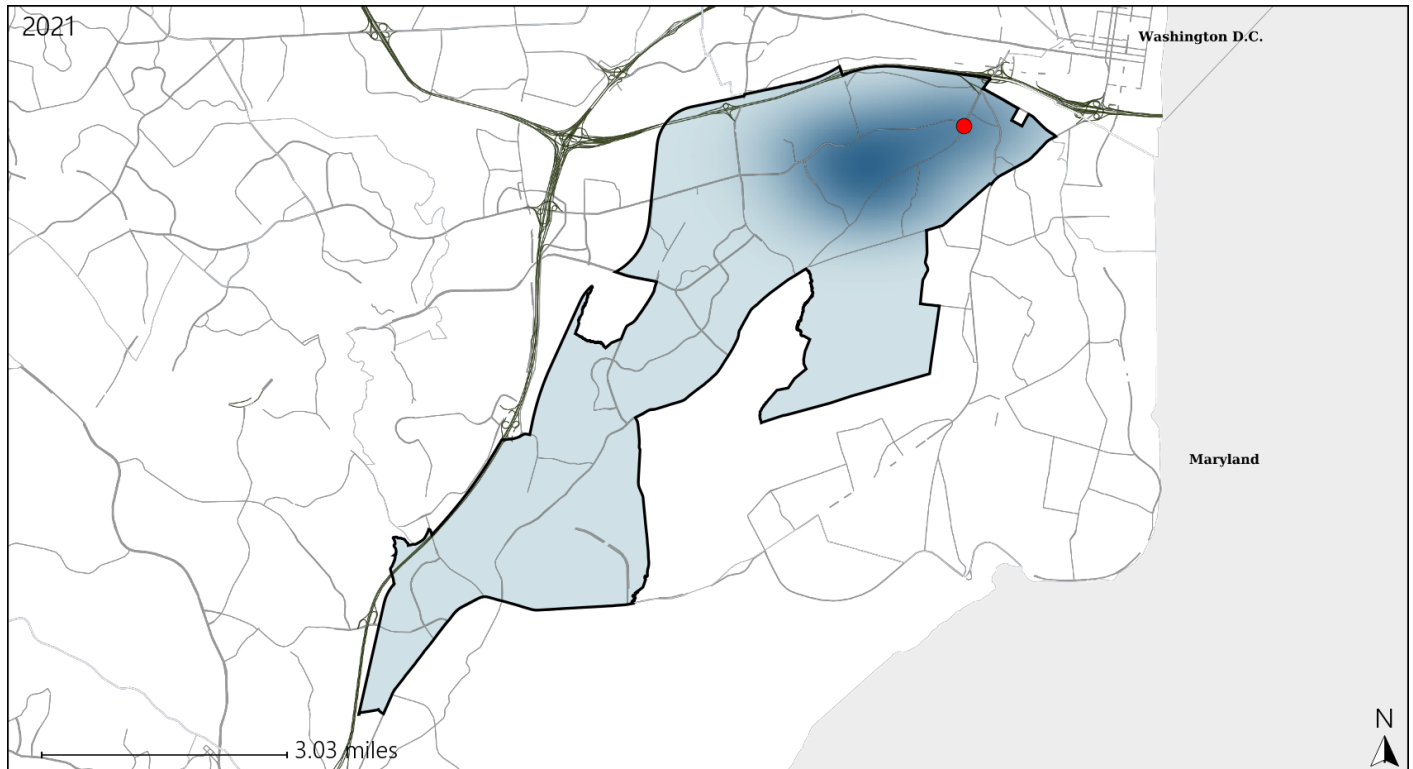


Available Crash Data - Calendar Year (CY)	CY 2018	CY 2019	CY 2020	CY 2021
Total Crashes	844	793	535	618
Fatal Crashes	3	2	3	5
Injury Crashes	265	226	156	174
Pedestrian-Related Fatal Crashes	1	0	0	2
Percent of Pedestrian-Related Fatal Crashes to Total Fatal Crashes	33%	0%	0%	40%
Pedestrian-Related Injury Crashes	9	8	3	15
Percent of Pedestrian-Related Injury Crashes to Total Injury Crashes	3%	4%	2%	9%

Virginia House District 43 Bicycle Crash Statistics

Report Generated April, 2022

	Count	Highest Time Period(s)	Highest Day(s)	Highest Month(s)
Fatal Crashes	1	9:00am - 11:59am	Thursday	June
Bicycle Fatalities	1	(100%)	(100%)	(100%)
Serious Injury Crashes	0	-	-	-



House District 43 Bicycle-Related Crashes

Interstate Crashes

Non-interstate Crashes

● Fatal

● Fatal

● Serious Injury

● Serious Injury

The blue gradient represents the density of all bicycle-related crashes.

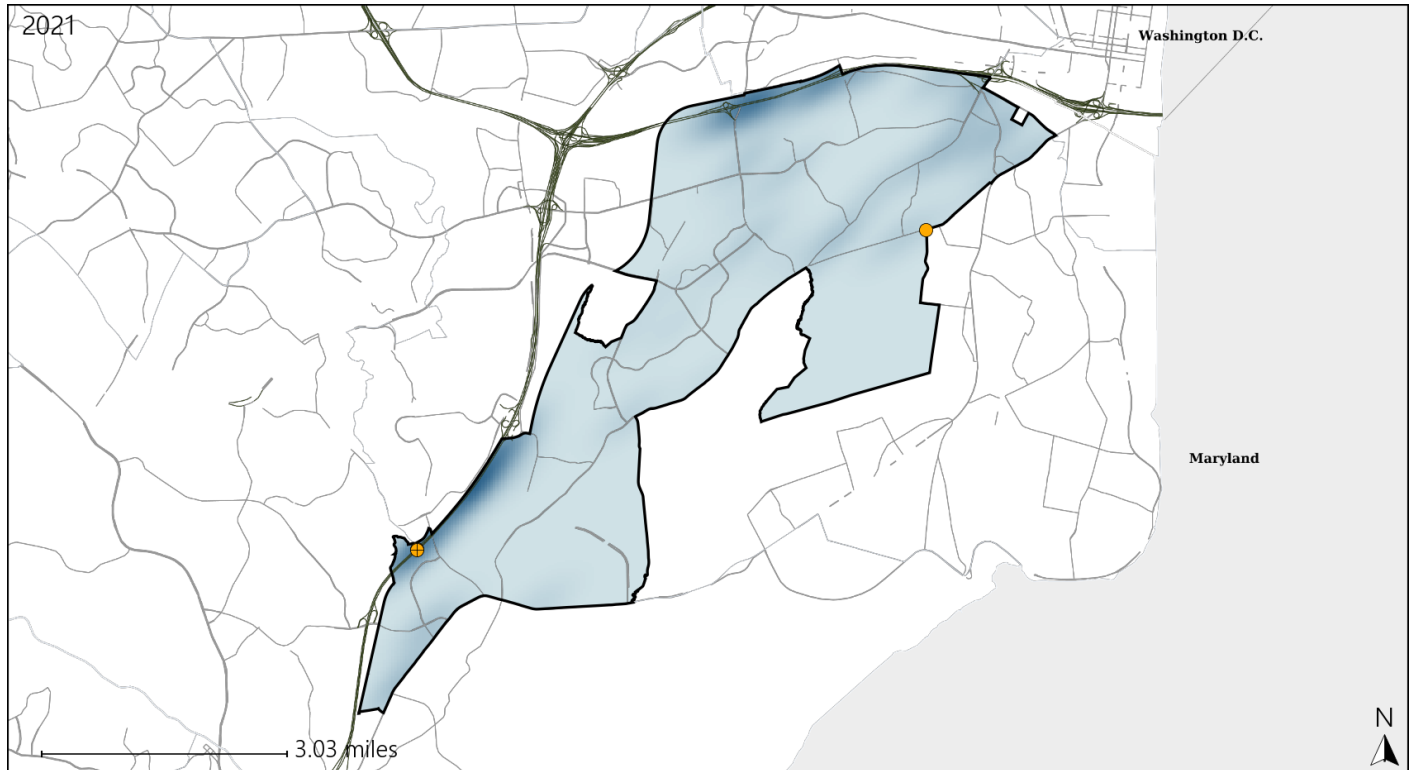


Available Crash Data - Calendar Year (CY)	CY 2018	CY 2019	CY 2020	CY 2021
Total Crashes	844	793	535	618
Fatal Crashes	3	2	3	5
Injury Crashes	265	226	156	174
Bicycle-Related Fatal Crashes	0	0	0	1
Percent of Bicycle-Related Fatal Crashes to Total Fatal Crashes	0%	0%	0%	20%
Bicycle-Related Injury Crashes	1	6	2	1
Percent of Bicycle-Related Injury Crashes to Total Injury Crashes	0%	3%	1%	1%

Virginia House District 43 Distracted Driving Crash Statistics

Report Generated April, 2022

	Count	Highest Time Period(s)	Highest Day(s)	Highest Month(s)
Fatal Crashes	0	-	-	-
Resulting Fatalities	0	-	-	-
Serious Injury Crashes	3	Noon - 2:59pm (67%)	Friday • Saturday (66%)	August • January (66%)



House District 43 Distracted Driving-Related Crashes

Interstate Crashes

Non-interstate Crashes

- Fatal
- Serious Injury

- Fatal
- Serious Injury

The blue gradient represents the density of all distracted driving-related crashes.



Available Crash Data - Calendar Year (CY)	CY 2018	CY 2019	CY 2020	CY 2021
Total Crashes	844	793	535	618
Fatal Crashes	3	2	3	5
Injury Crashes	265	226	156	174
Distracted Driving-Related Fatal Crashes	0	0	0	0
Percent of Distracted Driving-Related Fatal Crashes to Total Fatal Crashes	0%	0%	0%	0%
Distracted Driving-Related Injury Crashes	62	36	35	32
Percent of Distracted Driving-Related Injury Crashes to Total Injury Crashes	23%	16%	22%	18%