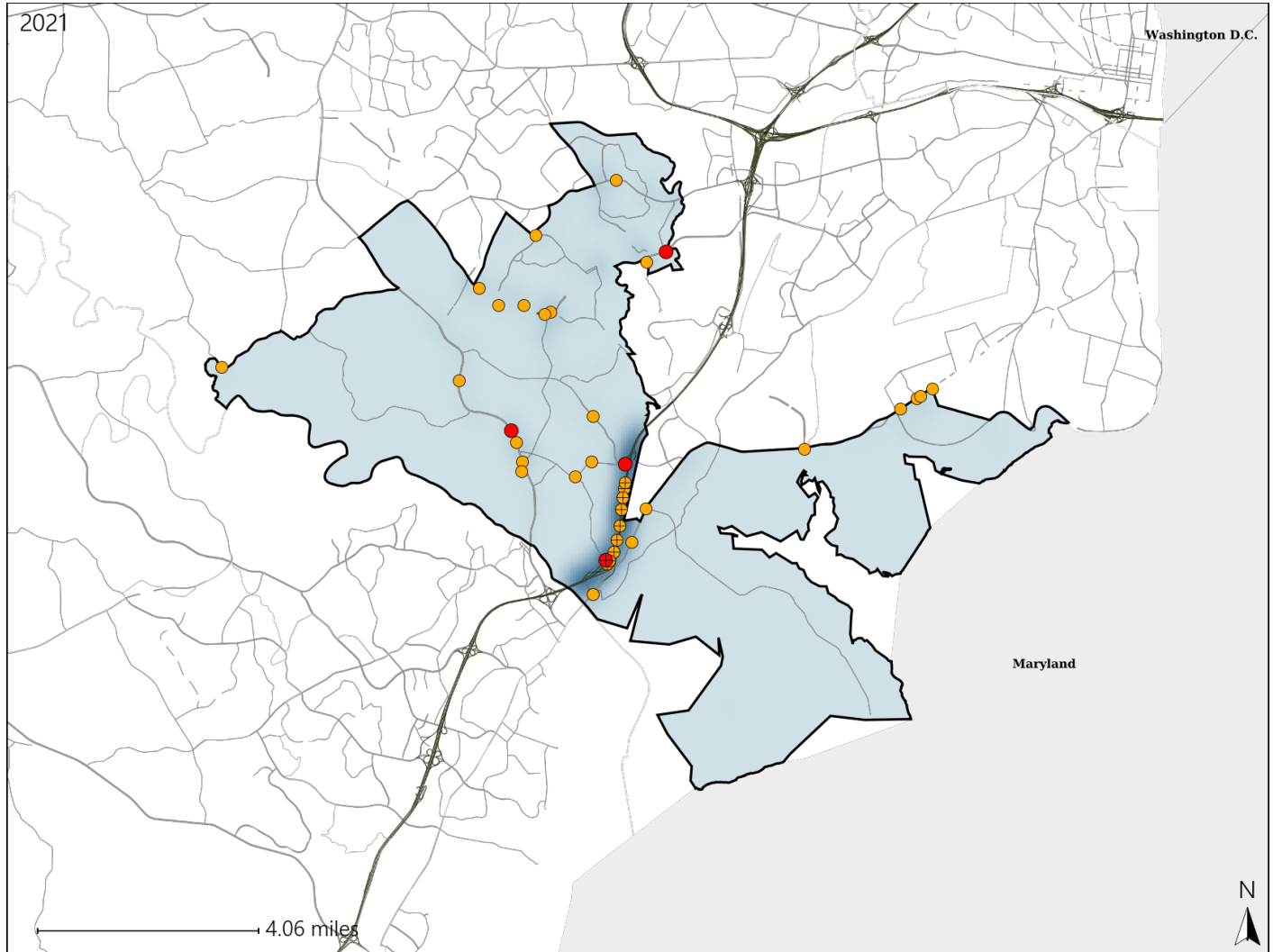


# Virginia House District 42 Crash Statistics

Report Generated April, 2022

|                               | Count     | Highest Time Period(s)    | Highest Day(s)    | Highest Month(s)          |
|-------------------------------|-----------|---------------------------|-------------------|---------------------------|
| <b>Fatal Crashes</b>          | <b>4</b>  | 3:00pm - 5:59pm           | Friday            | April • July              |
| <b>Resulting Fatalities</b>   | <b>4</b>  | 9:00am - 11:59am<br>(50%) | (50%)             | (50%)                     |
| <b>Serious Injury Crashes</b> | <b>35</b> | 3:00pm - 5:59pm<br>(34%)  | Saturday<br>(23%) | April • December<br>(22%) |



## House District 42 Crashes

### Interstate Crashes

- Fatal
- Serious Injury

### Non-interstate Crashes

- Fatal
- Serious Injury

The blue gradient represents the density of all crashes.



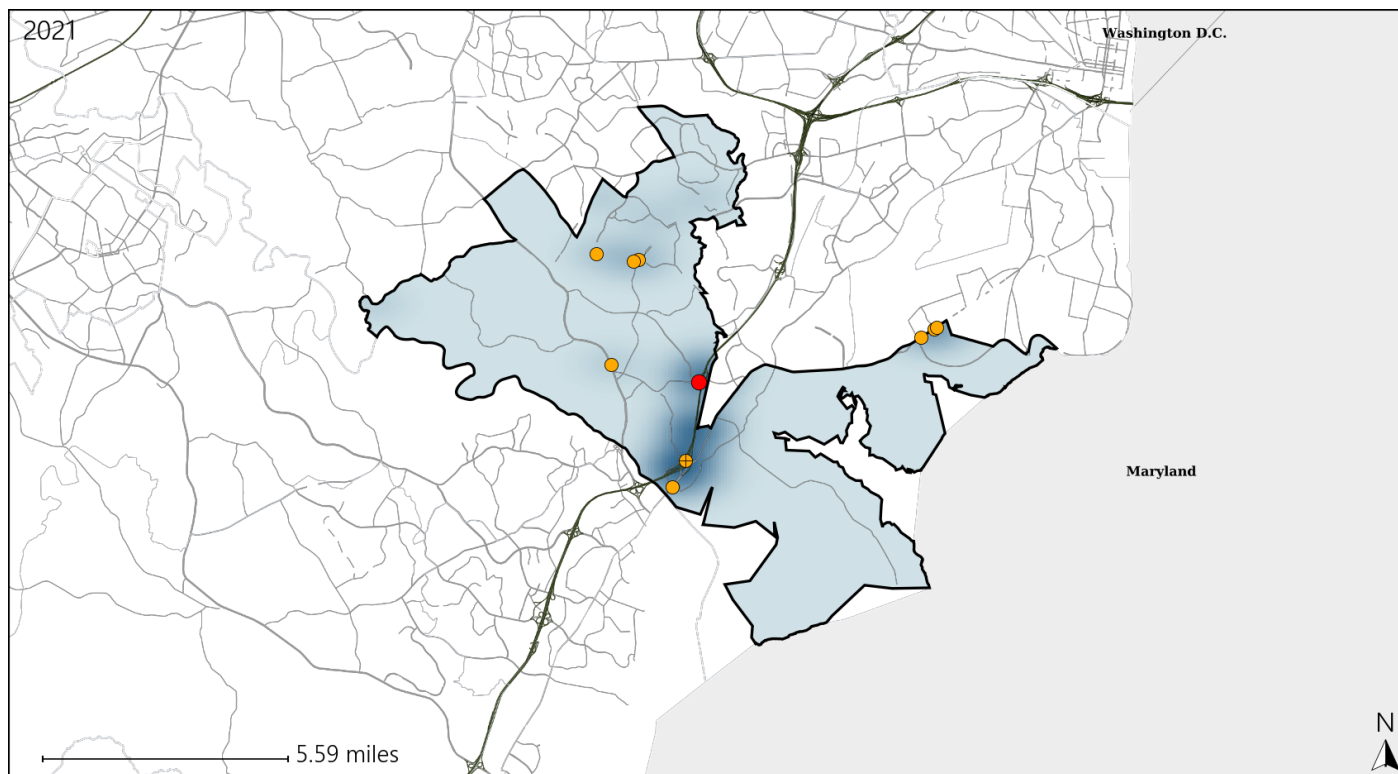
| Available Crash Data - Calendar Year (CY) | CY 2018 | CY 2019 | CY 2020 | CY 2021 |
|---|---------|---------|---------|---------|
| Total Crashes                             | 884     | 892     | 626     | 718     |
| Fatal Crashes                             | 5       | 2       | 6       | 4       |
| Injury Crashes                            | 233     | 217     | 157     | 230     |

Report of Crashes for January 1<sup>st</sup> - December 31<sup>st</sup>, 2021

# Virginia House District 42 Alcohol Crash Statistics

Report Generated April, 2022

|                               | Count    | Highest Time Period(s)                           | Highest Day(s)  | Highest Month(s)   |
|-------------------------------|----------|--|-----------------|--------------------|
| <b>Fatal Crashes</b>          | <b>1</b> | <b>9:00pm - 11:59pm</b>                          | <b>Friday</b>   | <b>July</b>        |
| <b>Resulting Fatalities</b>   | <b>1</b> | <b>(100%)</b>                                    | <b>(100%)</b>   | <b>(100%)</b>      |
| <b>Serious Injury Crashes</b> | <b>9</b> | <b>3:00pm - 5:59pm</b><br><b>6:00pm - 8:59pm</b> | <b>Saturday</b> | <b>April • May</b> |
|                               |          | <b>(44%)</b>                                     | <b>(44%)</b>    | <b>(44%)</b>       |



## House District 42 Alcohol-Related Crashes

Interstate Crashes

Non-interstate Crashes

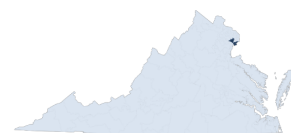
● Fatal

● Fatal

⊕ Serious Injury

⊕ Serious Injury

The blue gradient represents the density of all alcohol-related crashes.



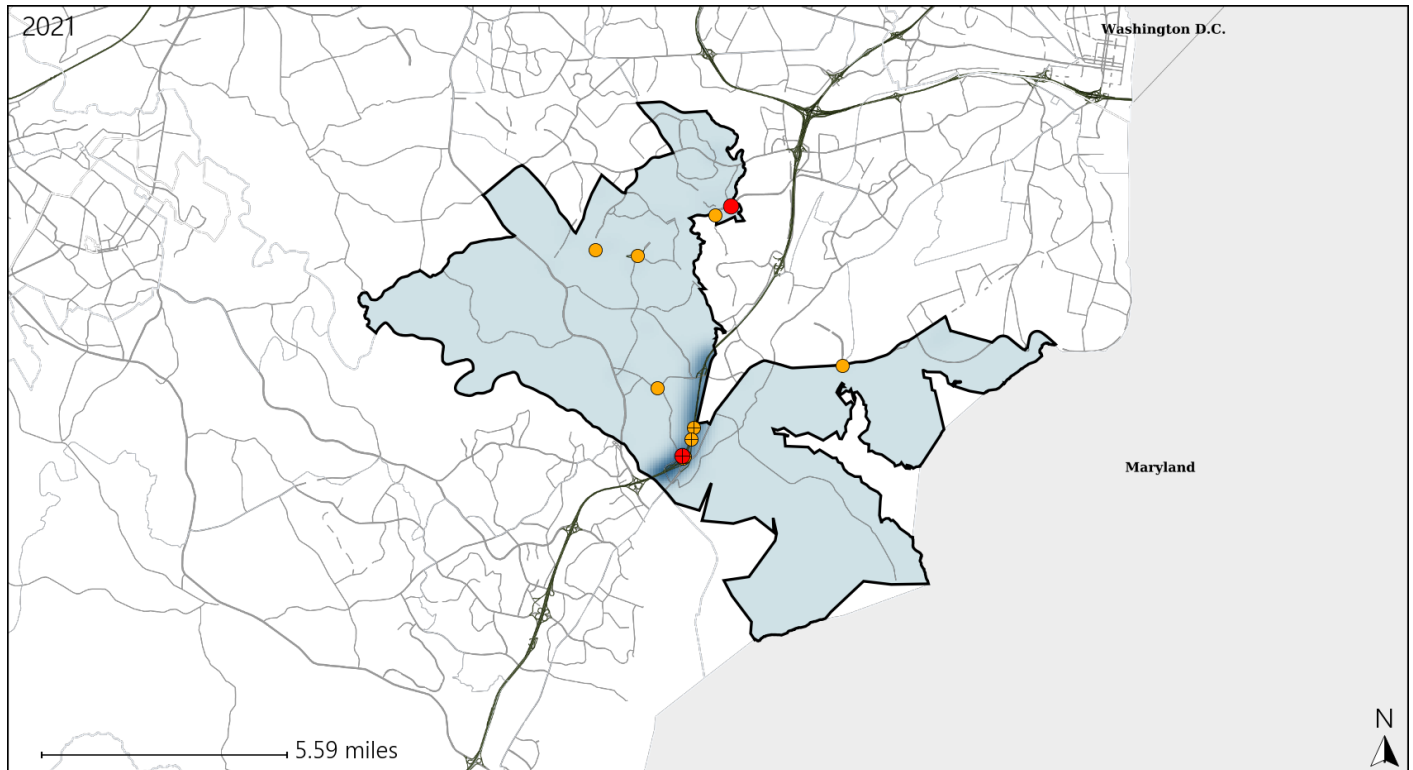
| Available Crash Data - Calendar Year (CY)                         | CY 2018 | CY 2019 | CY 2020 | CY 2021 |
|---|---------|---------|---------|---------|
| Total Crashes   | 884     | 892     | 626     | 718     |
| Fatal Crashes   | 5       | 2       | 6       | 4       |
| Injury Crashes  | 233     | 217     | 157     | 230     |
| Alcohol-Related Fatal Crashes                                     | 1       | 1       | 4       | 1       |
| Percent of Alcohol-Related Fatal Crashes to Total Fatal Crashes   | 20%     | 50%     | 67%     | 25%     |
| Alcohol-Related Injury Crashes                                    | 10      | 11      | 13      | 22      |
| Percent of Alcohol-Related Injury Crashes to Total Injury Crashes | 4%      | 5%      | 8%      | 10%     |

Report of Crashes for January 1<sup>st</sup> - December 31<sup>st</sup>, 2021

# Virginia House District 42 Speed Crash Statistics

Report Generated April, 2022

|                               | Count     | Highest Time Period(s)     | Highest Day(s)    | Highest Month(s)        |
|-------------------------------|-----------|----------------------------|-------------------|-------------------------|
| <b>Fatal Crashes</b>          | <b>2</b>  | 3:00pm - 5:59pm            | Friday • Sunday   | April • October         |
| <b>Resulting Fatalities</b>   | <b>2</b>  | 9:00am - 11:59am<br>(100%) | (100%)            | (100%)                  |
| <b>Serious Injury Crashes</b> | <b>10</b> | 3:00pm - 5:59pm<br>(50%)   | Saturday<br>(30%) | April • August<br>(40%) |



## House District 42 Speed-Related Crashes

Interstate Crashes

Non-interstate Crashes

- Fatal
- Serious Injury

- Fatal
- Serious Injury

The blue gradient represents the density of all speed-related crashes.

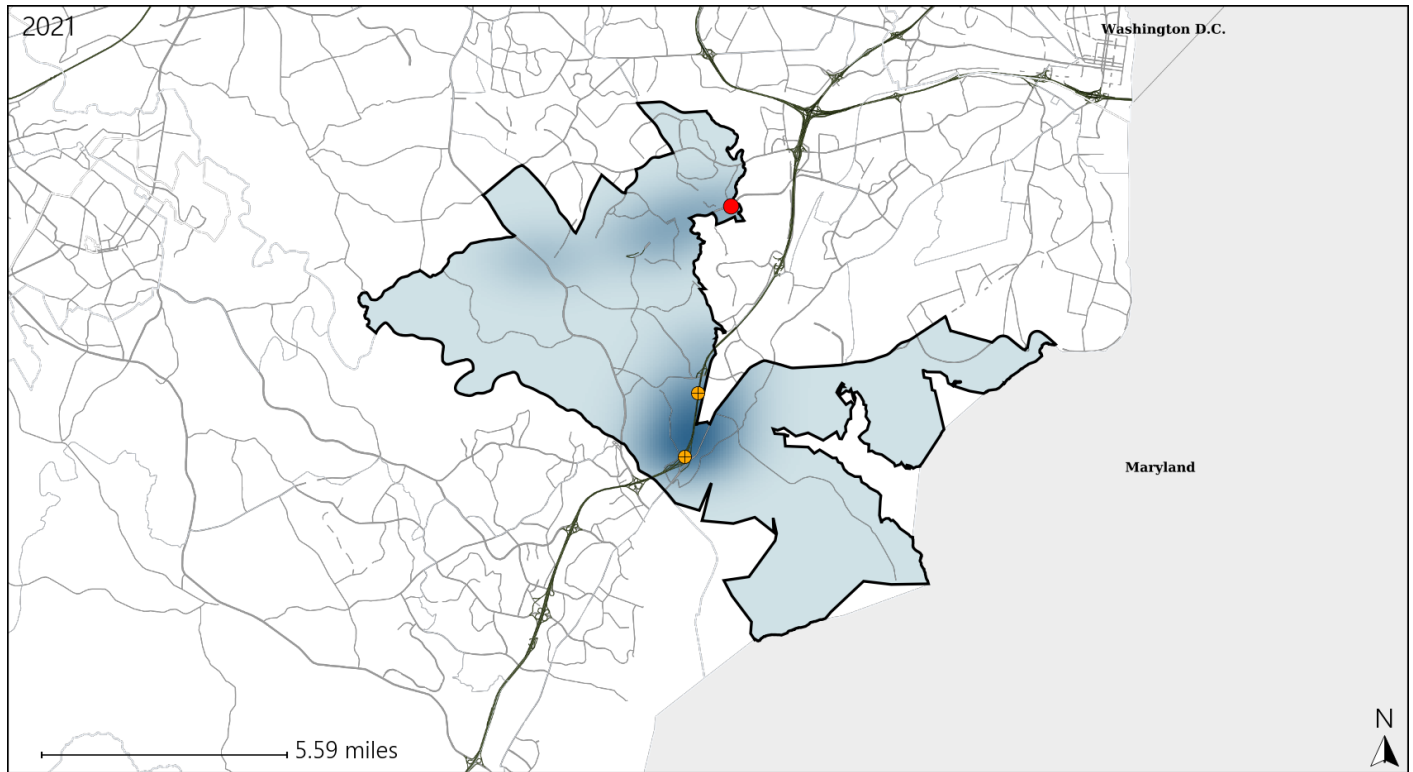


| Available Crash Data - Calendar Year (CY)                       | CY 2018 | CY 2019 | CY 2020 | CY 2021 |
|---|---------|---------|---------|---------|
| Total Crashes   | 884     | 892     | 626     | 718     |
| Fatal Crashes   | 5       | 2       | 6       | 4       |
| Injury Crashes  | 233     | 217     | 157     | 230     |
| Speed-Related Fatal Crashes                                     | 4       | 2       | 5       | 2       |
| Percent of Speed-Related Fatal Crashes to Total Fatal Crashes   | 80%     | 100%    | 83%     | 50%     |
| Speed-Related Injury Crashes                                    | 63      | 73      | 53      | 85      |
| Percent of Speed-Related Injury Crashes to Total Injury Crashes | 27%     | 34%     | 34%     | 37%     |

# Virginia House District 42 Unrestrained Crash Statistics

Report Generated April, 2022

|                                | Count    | Highest Time Period(s)                             | Highest Day(s)           | Highest Month(s)       |
|--------------------------------|----------|--|--------------------------|------------------------|
| <b>Fatal Crashes</b>           | <b>1</b> | <b>3:00pm - 5:59pm</b>                             | <b>Friday</b>            | <b>October</b>         |
| <b>Unrestrained Fatalities</b> | <b>1</b> | <b>(100%)</b>                                      | <b>(100%)</b>            | <b>(100%)</b>          |
| <b>Serious Injury Crashes</b>  | <b>2</b> | <b>6:00pm - 8:59pm</b><br><b>Midnight - 2:59am</b> | <b>Friday • Thursday</b> | <b>March • October</b> |
|                                |          | <b>(100%)</b>                                      | <b>(100%)</b>            | <b>(100%)</b>          |



## House District 42 Unrestrained-Related Crashes

Interstate Crashes

Non-interstate Crashes

● Fatal

● Fatal

⊕ Serious Injury

⊕ Serious Injury

The blue gradient represents the density of all unrestrained-related crashes.

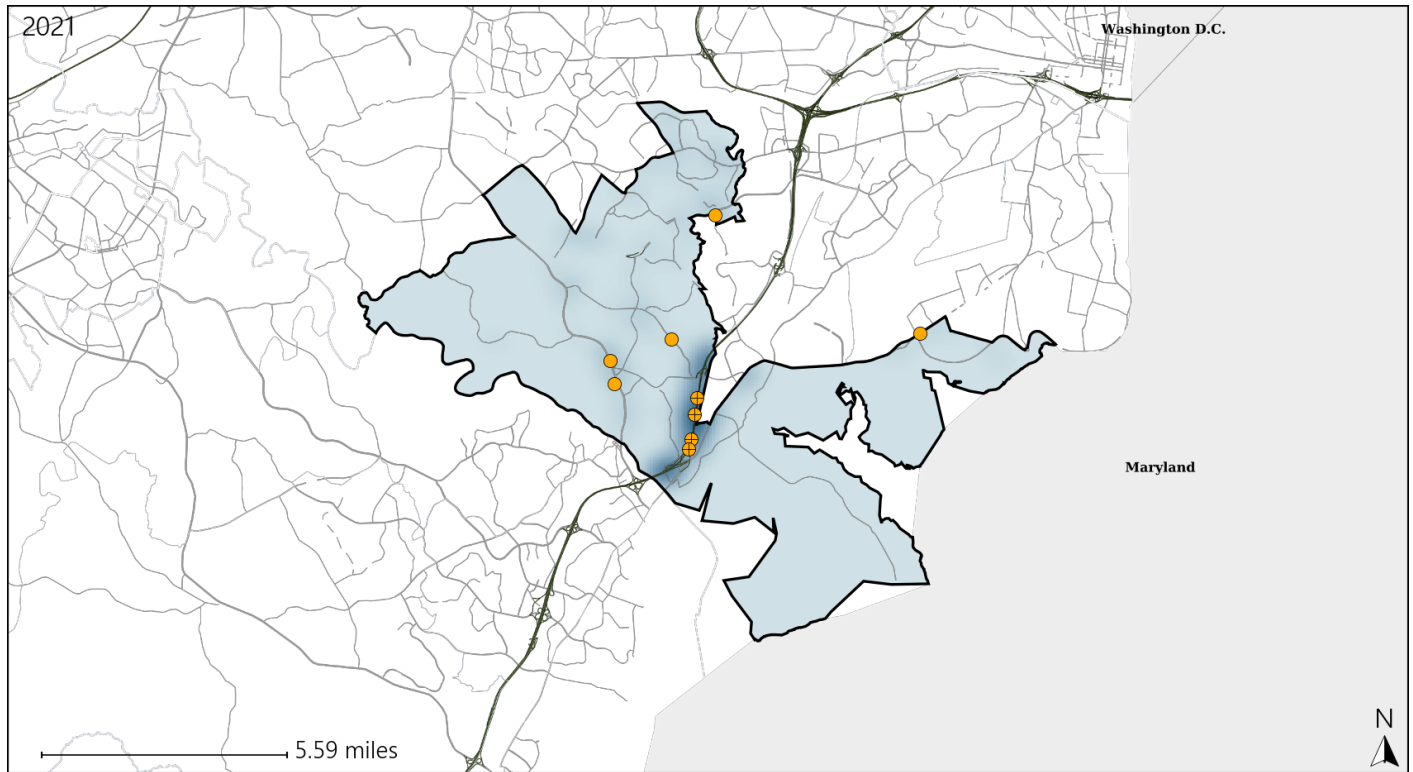


| Available Crash Data - Calendar Year (CY)              | CY 2018 | CY 2019 | CY 2020 | CY 2021 |
|--|---------|---------|---------|---------|
| Total Crashes  | 884     | 892     | 626     | 718     |
| Fatalities   | 5       | 2       | 6       | 4       |
| Injuries   | 337     | 335     | 234     | 353     |
| Unrestrained Fatalities                                | 2       | 0       | 3       | 1       |
| Percent of Unrestrained Fatalities to Total Fatalities | 40%     | 0%      | 50%     | 25%     |
| Unrestrained Injuries                                  | 3       | 7       | 8       | 12      |
| Percent of Unrestrained Injuries to Total Injuries     | 1%      | 2%      | 3%      | 3%      |

# Virginia House District 42 Distracted Driving Crash Statistics

Report Generated April, 2022

|                               | Count    | Highest Time Period(s)                      | Highest Day(s)    | Highest Month(s) |
|-------------------------------|----------|---|-------------------|------------------|
| <b>Fatal Crashes</b>          | <b>0</b> | -   | -                 | -                |
| <b>Resulting Fatalities</b>   | <b>0</b> | -   | -                 | -                |
| <b>Serious Injury Crashes</b> | <b>9</b> | 3:00pm - 5:59pm<br>6:00pm - 8:59pm<br>(44%) | Saturday<br>(33%) | April<br>(22%)   |



## House District 42 Distracted Driving-Related Crashes

Interstate Crashes

Non-interstate Crashes

- Fatal
- Serious Injury

- Fatal
- Serious Injury

The blue gradient represents the density of all distracted driving-related crashes.



| Available Crash Data - Calendar Year (CY)                                    | CY 2018 | CY 2019 | CY 2020 | CY 2021 |
|--|---------|---------|---------|---------|
| Total Crashes  | 884     | 892     | 626     | 718     |
| Fatal Crashes  | 5       | 2       | 6       | 4       |
| Injury Crashes   | 233     | 217     | 157     | 230     |
| Distracted Driving-Related Fatal Crashes                                     | 1       | 1       | 2       | 0       |
| Percent of Distracted Driving-Related Fatal Crashes to Total Fatal Crashes   | 20%     | 50%     | 33%     | 0%      |
| Distracted Driving-Related Injury Crashes                                    | 54      | 44      | 36      | 65      |
| Percent of Distracted Driving-Related Injury Crashes to Total Injury Crashes | 23%     | 20%     | 23%     | 28%     |