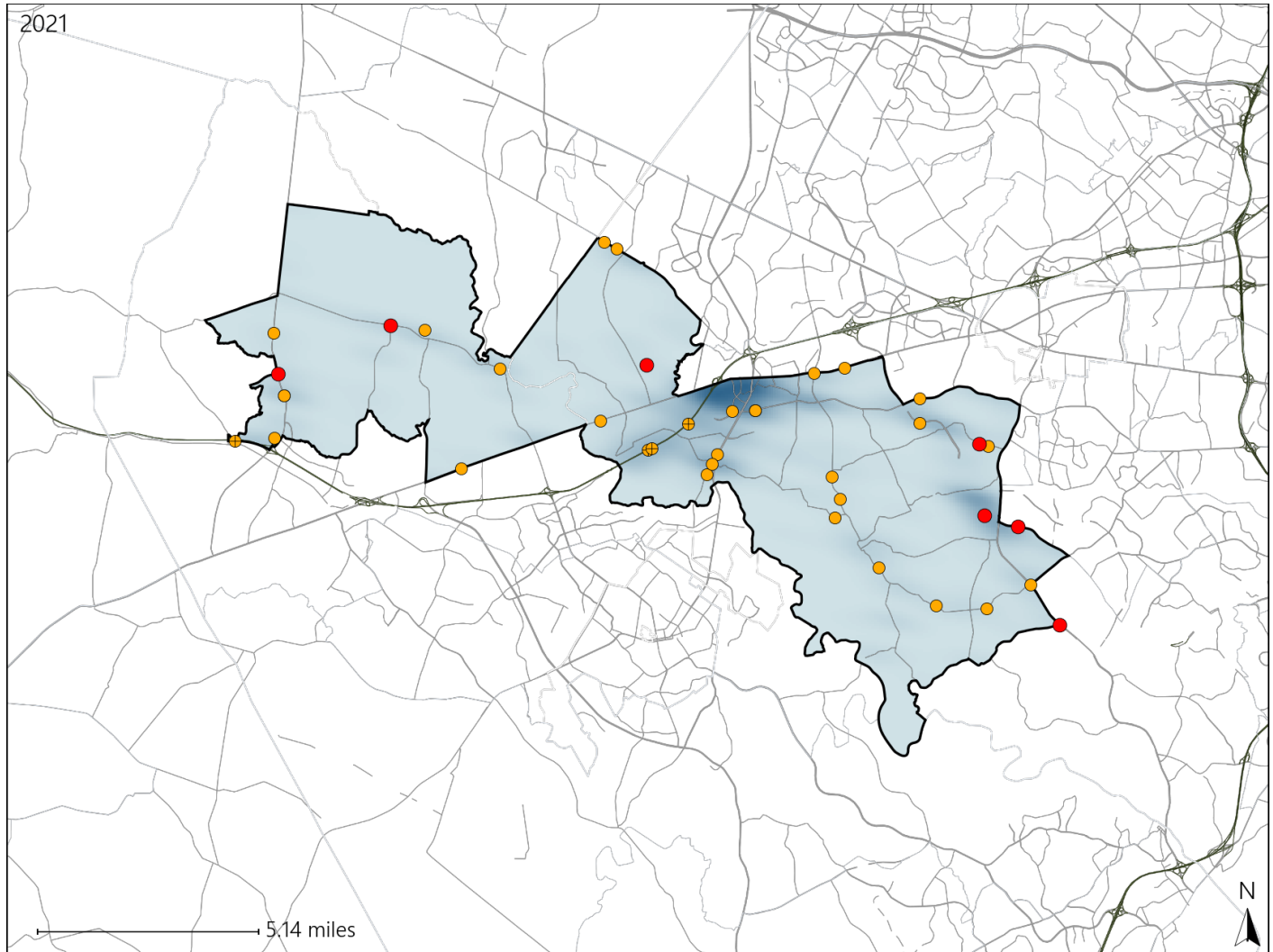


# Virginia House District 40 Crash Statistics

Report Generated April, 2022

	Count	Highest Time Period(s)	Highest Day(s)	Highest Month(s)
<b>Fatal Crashes</b>	<b>7</b>	<b>6:00pm - 8:59pm</b>	<b>Friday • Tuesday</b>	<b>November</b>
<b>Resulting Fatalities</b>	<b>7</b>	<b>(43%)</b>	<b>(58%)</b>	<b>(43%)</b>
<b>Serious Injury Crashes</b>	<b>32</b>	<b>6:00pm - 8:59pm</b>	<b>Wednesday</b>	<b>December • May</b>
		<b>(25%)</b>	<b>(28%)</b>	<b>(32%)</b>



## House District 40 Crashes

Interstate Crashes

- Fatal
- Serious Injury

Non-interstate Crashes

- Fatal
- Serious Injury

The blue gradient represents the density of all crashes.



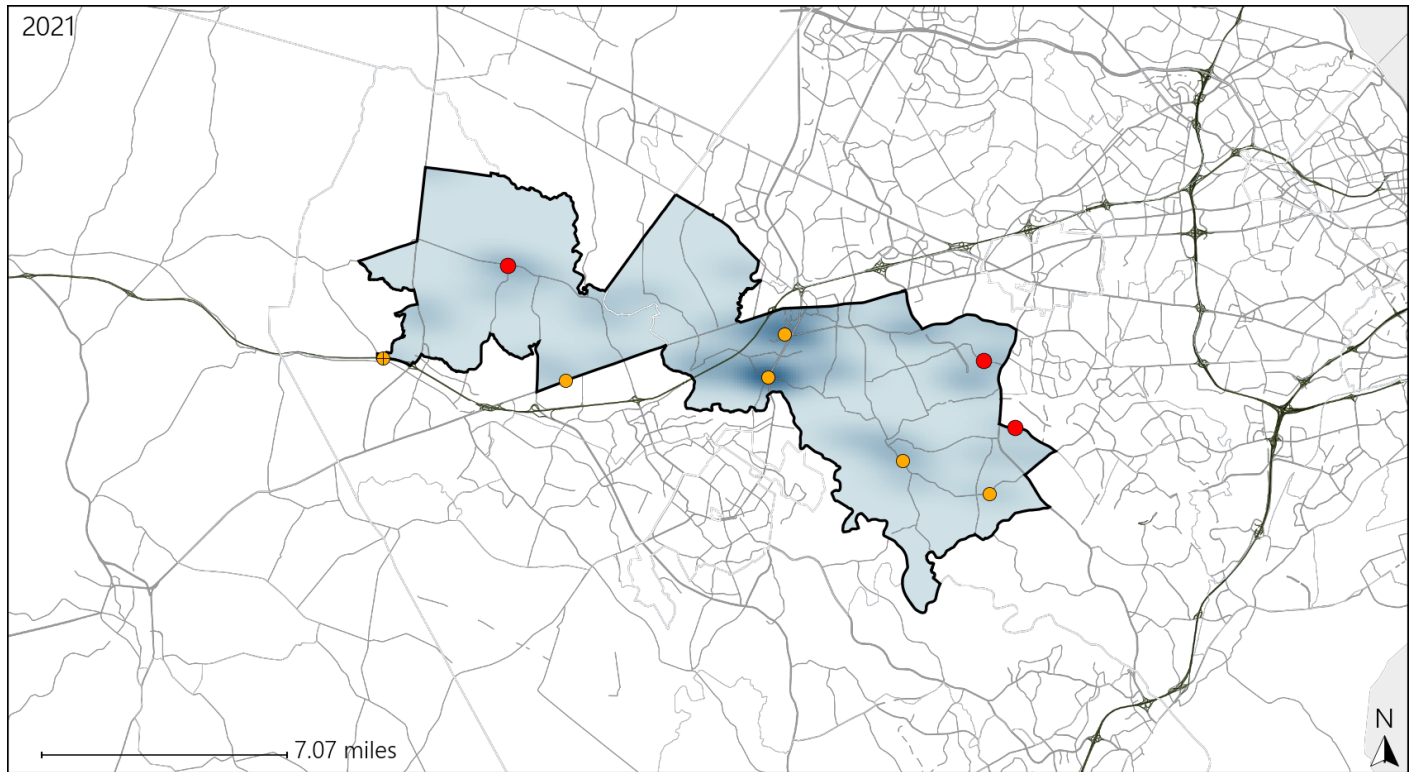
Available Crash Data - Calendar Year (CY)	CY 2018	CY 2019	CY 2020	CY 2021
Total Crashes	994	1018	781	813
Fatal Crashes	7	3	2	7
Injury Crashes	308	323	202	234

Report of Crashes for January 1<sup>st</sup> - December 31<sup>st</sup>, 2021

# Virginia House District 40 Alcohol Crash Statistics

Report Generated April, 2022

	Count	Highest Time Period(s)	Highest Day(s)	Highest Month(s)
<b>Fatal Crashes</b>	<b>3</b>	<b>6:00pm - 8:59pm</b>	<b>Saturday • Sunday</b>	<b>August • March</b>
<b>Resulting Fatalities</b>	<b>3</b>	<b>(67%)</b>	<b>(66%)</b>	<b>(66%)</b>
<b>Serious Injury Crashes</b>	<b>6</b>	<b>6:00pm - 8:59pm Midnight - 2:59am</b>	<b>Saturday • Thursday</b>	<b>December</b>
		<b>(66%)</b>	<b>(66%)</b>	<b>(33%)</b>



## House District 40 Alcohol-Related Crashes

Interstate Crashes

Non-interstate Crashes

● Fatal

● Fatal

⊕ Serious Injury

⊕ Serious Injury

The blue gradient represents the density of all alcohol-related crashes.



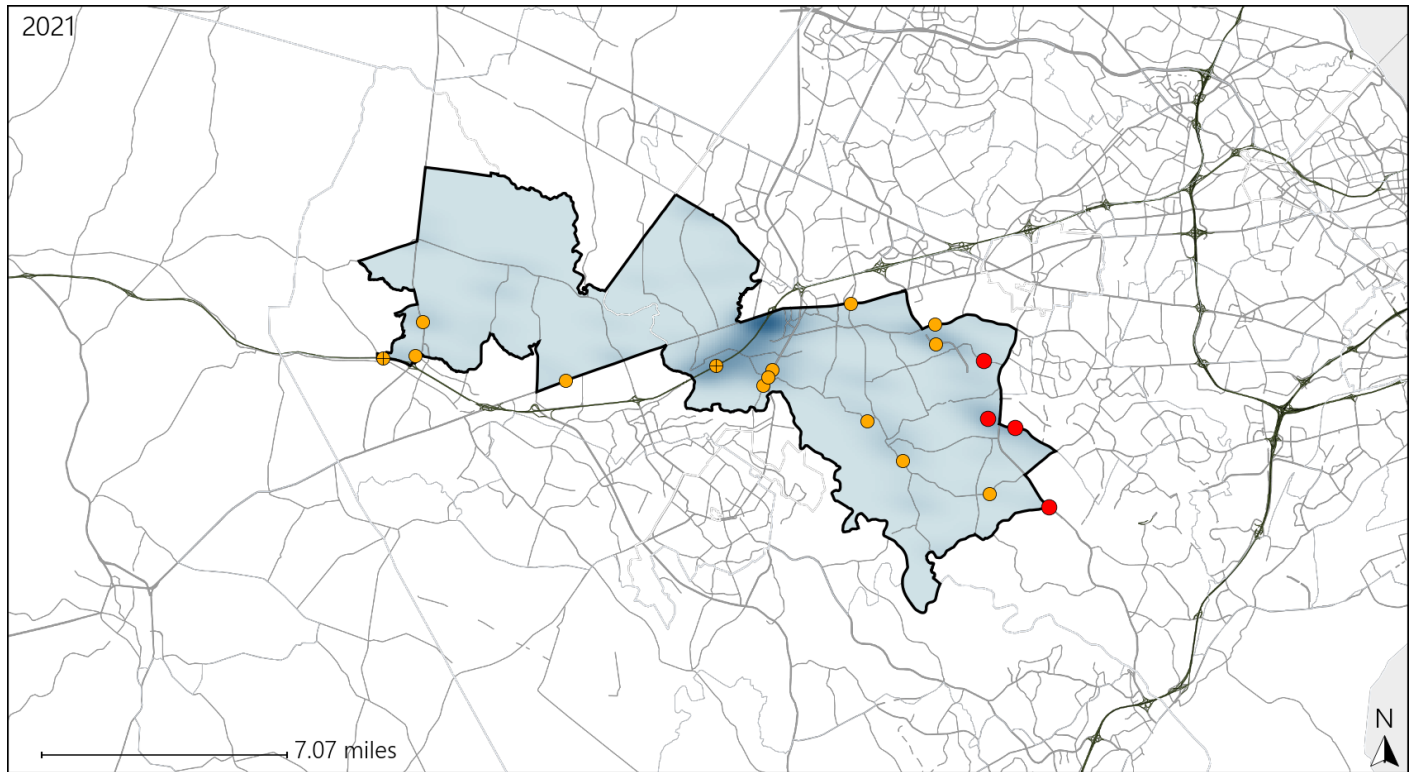
Available Crash Data - Calendar Year (CY)	CY 2018	CY 2019	CY 2020	CY 2021
Total Crashes	994	1018	781	813
Fatal Crashes	7	3	2	7
Injury Crashes	308	323	202	234
Alcohol-Related Fatal Crashes	1	2	1	3
Percent of Alcohol-Related Fatal Crashes to Total Fatal Crashes	14%	67%	50%	43%
Alcohol-Related Injury Crashes	24	18	17	21
Percent of Alcohol-Related Injury Crashes to Total Injury Crashes	8%	6%	8%	9%

Report of Crashes for January 1<sup>st</sup> - December 31<sup>st</sup>, 2021

# Virginia House District 40 Speed Crash Statistics

Report Generated April, 2022

	Count	Highest Time Period(s)	Highest Day(s)	Highest Month(s)
<b>Fatal Crashes</b>	<b>4</b>	<b>6:00pm - 8:59pm</b>	<b>Friday • Monday</b>	<b>November</b>
<b>Resulting Fatalities</b>	<b>4</b>	<b>(75%)</b>	<b>(50%)</b>	<b>(75%)</b>
<b>Serious Injury Crashes</b>	<b>14</b>	<b>3:00pm - 5:59pm</b> <b>6:00am - 8:59am</b>	<b>Thursday</b>	<b>December</b>
		<b>(42%)</b>	<b>(36%)</b>	<b>(29%)</b>



## House District 40 Speed-Related Crashes

Interstate Crashes

Non-interstate Crashes

● Fatal

● Fatal

⊕ Serious Injury

⊕ Serious Injury

The blue gradient represents the density of all speed-related crashes.

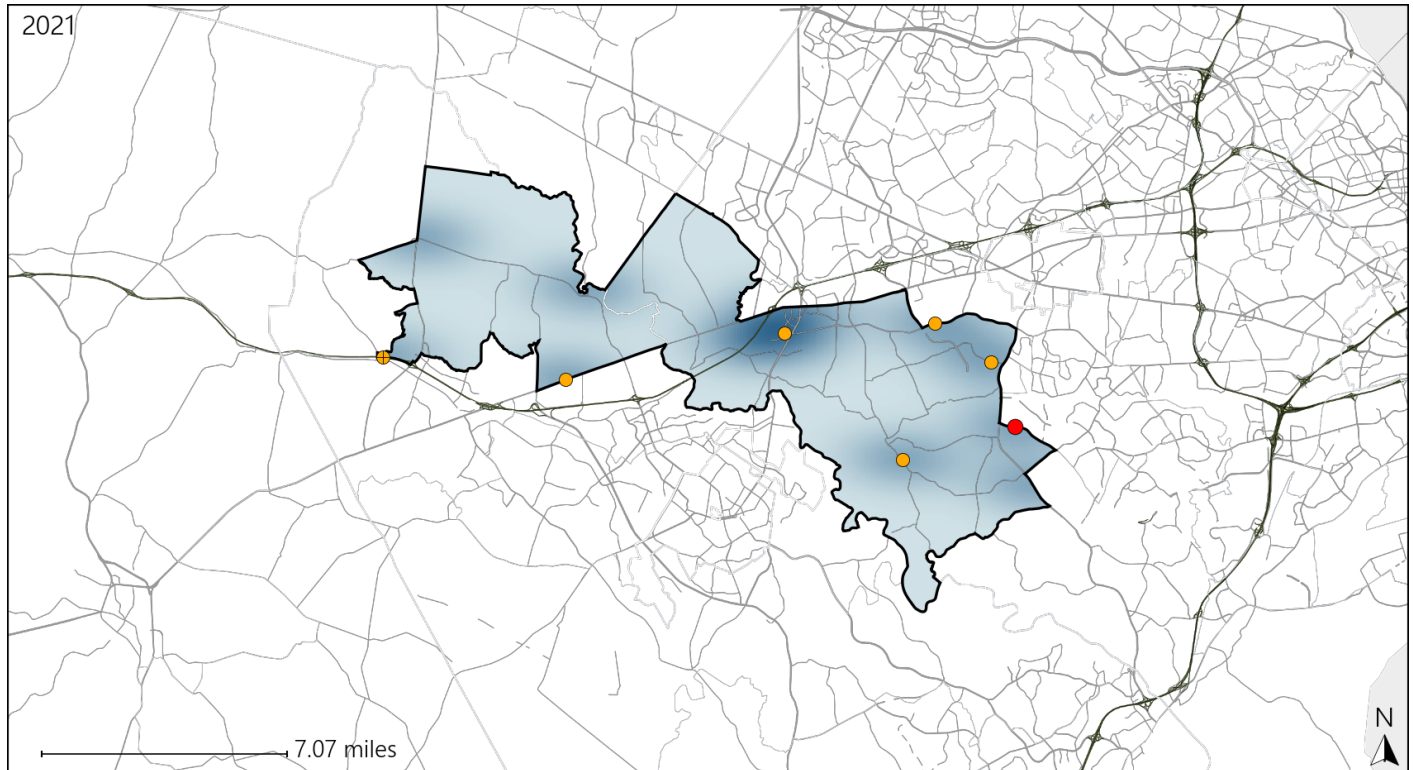


Available Crash Data - Calendar Year (CY)	CY 2018	CY 2019	CY 2020	CY 2021
Total Crashes	994	1018	781	813
Fatal Crashes	7	3	2	7
Injury Crashes	308	323	202	234
Speed-Related Fatal Crashes	3	3	1	4
Percent of Speed-Related Fatal Crashes to Total Fatal Crashes	43%	100%	50%	57%
Speed-Related Injury Crashes	54	58	45	51
Percent of Speed-Related Injury Crashes to Total Injury Crashes	18%	18%	22%	22%

# Virginia House District 40 Unrestrained Crash Statistics

Report Generated April, 2022

	Count	Highest Time Period(s)	Highest Day(s)	Highest Month(s)
<b>Fatal Crashes</b>	<b>1</b>	<b>6:00pm - 8:59pm</b>	<b>Saturday</b>	<b>November</b>
<b>Unrestrained Fatalities</b>	<b>1</b>	<b>(100%)</b>	<b>(100%)</b>	<b>(100%)</b>
<b>Serious Injury Crashes</b>	<b>6</b>	<b>6:00pm - 8:59pm</b>	<b>Saturday</b>	<b>April - December</b>
		<b>(50%)</b>	<b>(50%)</b>	<b>(34%)</b>



## House District 40 Unrestrained-Related Crashes

Interstate Crashes

Non-interstate Crashes

- Fatal
- Serious Injury

- Fatal
- Serious Injury

The blue gradient represents the density of all unrestrained-related crashes.



Available Crash Data - Calendar Year (CY)	CY 2018	CY 2019	CY 2020	CY 2021
Total Crashes	994	1018	781	813
Fatalities	7	3	2	7
Injuries	478	486	306	361
Unrestrained Fatalities	2	0	0	1
Percent of Unrestrained Fatalities to Total Fatalities	29%	0%	0%	14%
Unrestrained Injuries	14	17	11	13
Percent of Unrestrained Injuries to Total Injuries	3%	3%	4%	4%

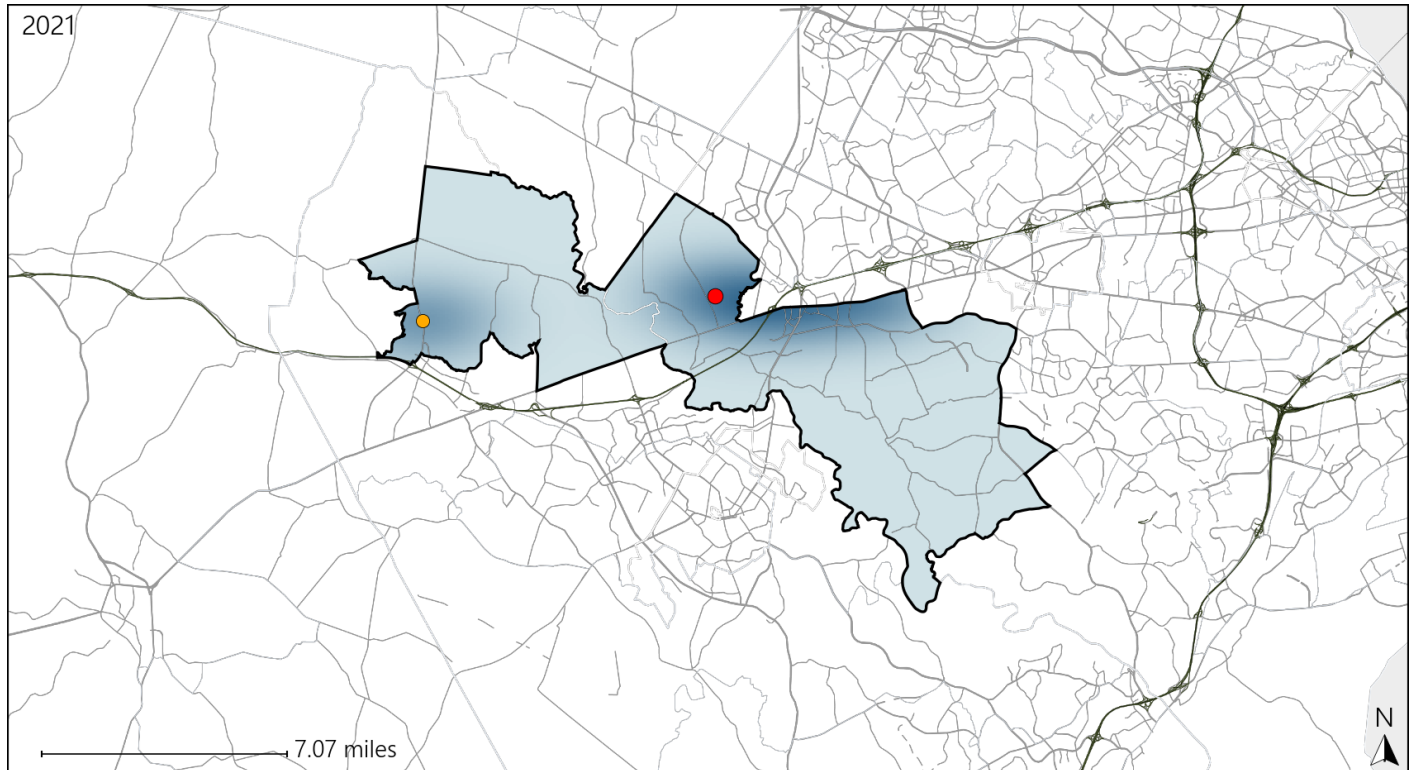


Report of Crashes for January 1<sup>st</sup> - December 31<sup>st</sup>, 2021

# Virginia House District 40 Bicycle Crash Statistics

Report Generated April, 2022

	Count	Highest Time Period(s)	Highest Day(s)	Highest Month(s)
<b>Fatal Crashes</b>	<b>1</b>	<b>9:00am - 11:59am</b>	<b>Friday</b>	<b>May</b>
<b>Bicycle Fatalities</b>	<b>1</b>	<b>(100%)</b>	<b>(100%)</b>	<b>(100%)</b>
<b>Serious Injury Crashes</b>	<b>1</b>	<b>3:00pm - 5:59pm</b>	<b>Wednesday</b>	<b>October</b>
		<b>(100%)</b>	<b>(100%)</b>	<b>(100%)</b>



## House District 40 Bicycle-Related Crashes

Interstate Crashes

Non-interstate Crashes

- Fatal
- Serious Injury

- Fatal
- Serious Injury

The blue gradient represents the density of all bicycle-related crashes.

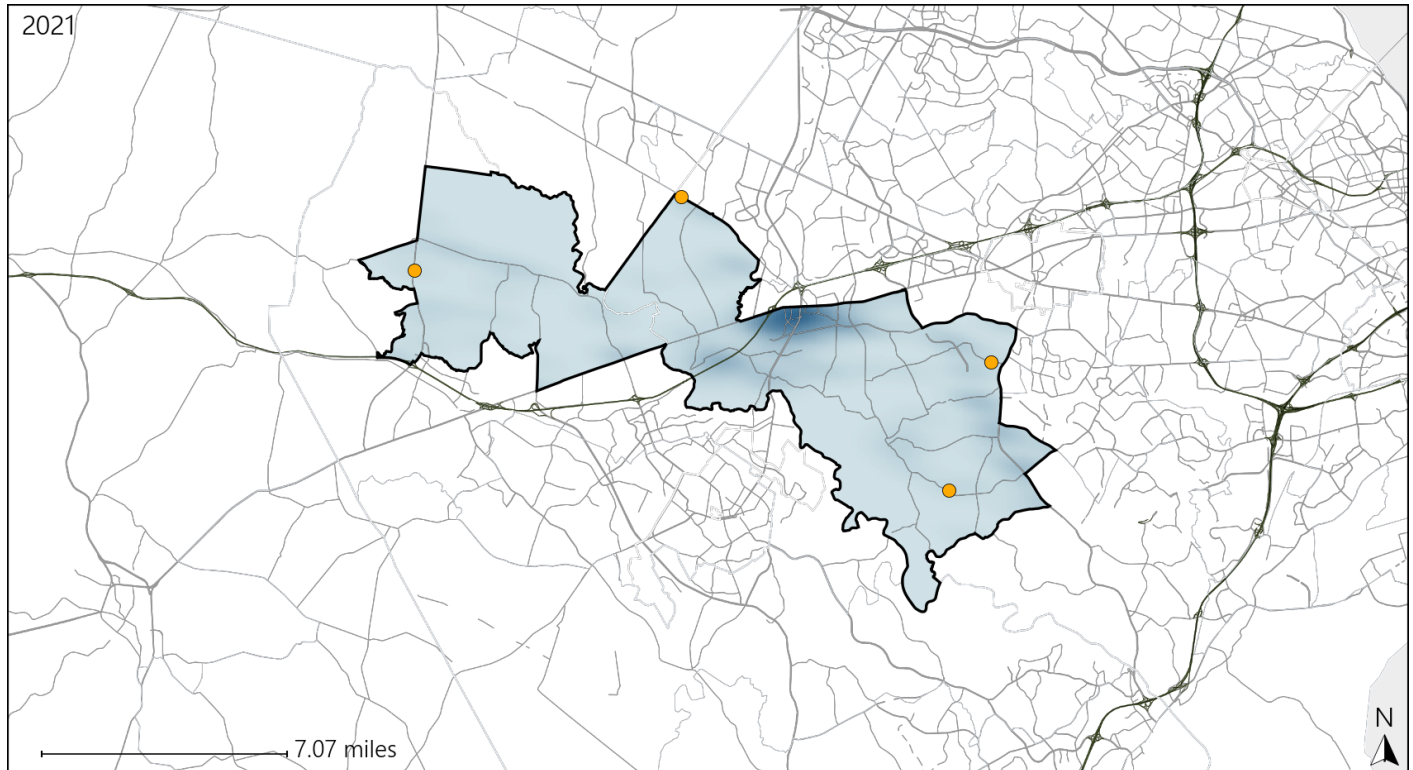


Available Crash Data - Calendar Year (CY)	CY 2018	CY 2019	CY 2020	CY 2021
Total Crashes	994	1018	781	813
Fatal Crashes	7	3	2	7
Injury Crashes	308	323	202	234
Bicycle-Related Fatal Crashes	0	0	0	1
Percent of Bicycle-Related Fatal Crashes to Total Fatal Crashes	0%	0%	0%	14%
Bicycle-Related Injury Crashes	2	2	5	3
Percent of Bicycle-Related Injury Crashes to Total Injury Crashes	1%	1%	2%	1%

# Virginia House District 40 Distracted Driving Crash Statistics

Report Generated April, 2022

	Count	Highest Time Period(s)	Highest Day(s)	Highest Month(s)
<b>Fatal Crashes</b>	0	-	-	-
<b>Resulting Fatalities</b>	0	-	-	-
<b>Serious Injury Crashes</b>	4	9:00am - 11:59am (50%)	Wednesday (75%)	November (50%)



## House District 40 Distracted Driving-Related Crashes

Interstate Crashes

Non-interstate Crashes

- Fatal
- Serious Injury

- Fatal
- Serious Injury

The blue gradient represents the density of all distracted driving-related crashes.



Available Crash Data - Calendar Year (CY)	CY 2018	CY 2019	CY 2020	CY 2021
Total Crashes	994	1018	781	813
Fatal Crashes	7	3	2	7
Injury Crashes	308	323	202	234
Distracted Driving-Related Fatal Crashes	0	1	0	0
Percent of Distracted Driving-Related Fatal Crashes to Total Fatal Crashes	0%	33%	0%	0%
Distracted Driving-Related Injury Crashes	66	87	34	51
Percent of Distracted Driving-Related Injury Crashes to Total Injury Crashes	21%	27%	17%	22%