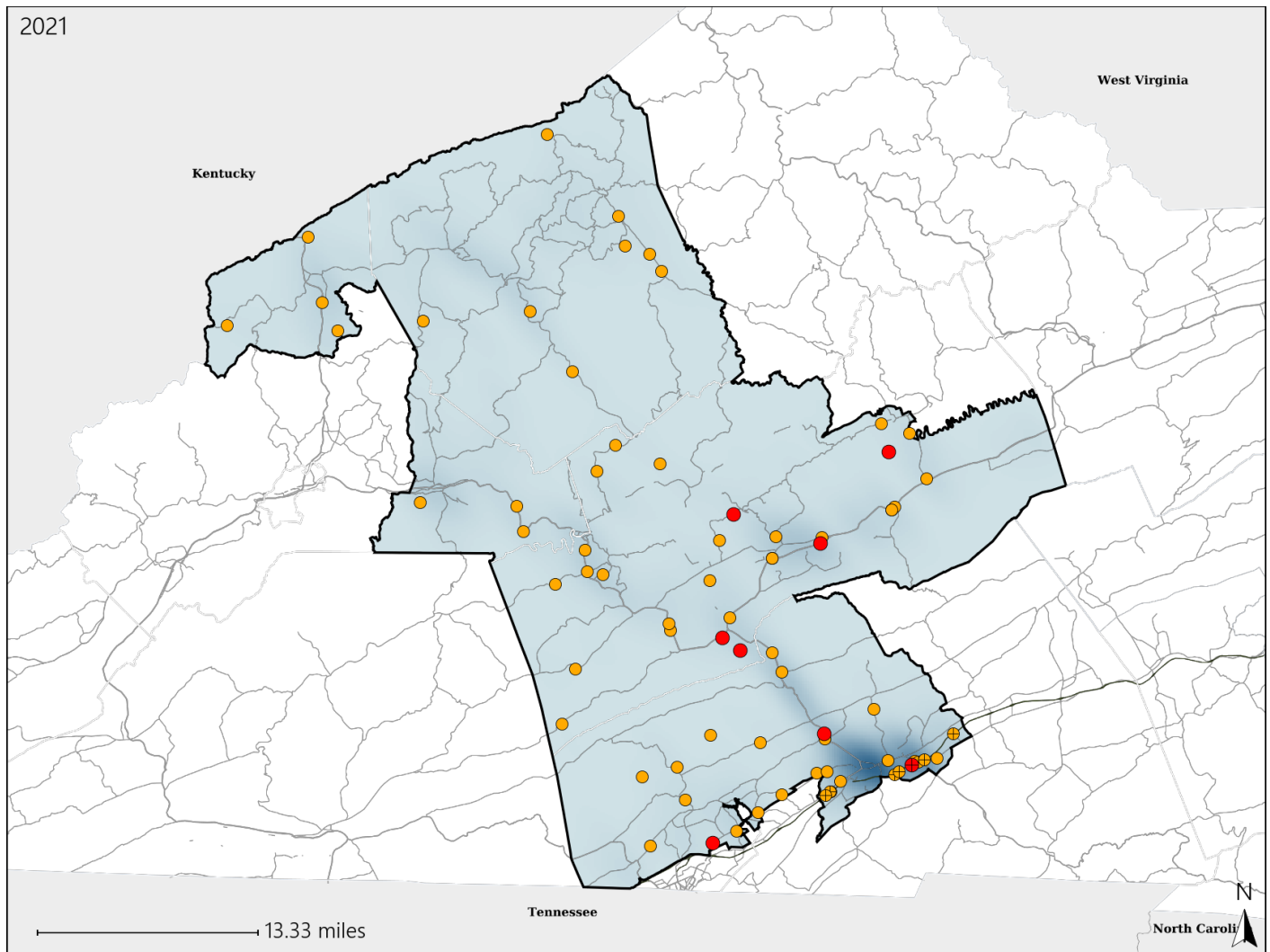


Virginia House District 4 Crash Statistics

Report Generated April, 2022

	Count	Highest Time Period(s)	Highest Day(s)	Highest Month(s)
Fatal Crashes	8	Noon - 2:59pm (50%)	Monday (50%)	November - October (50%)
Resulting Fatalities	10			
Serious Injury Crashes	66	6:00pm - 8:59pm Noon - 2:59pm (42%)	Friday (18%)	August (15%)



House District 4 Crashes

Interstate Crashes

- Fatal
- Serious Injury

Non-interstate Crashes

- Fatal
- Serious Injury

The blue gradient represents the density of all crashes.



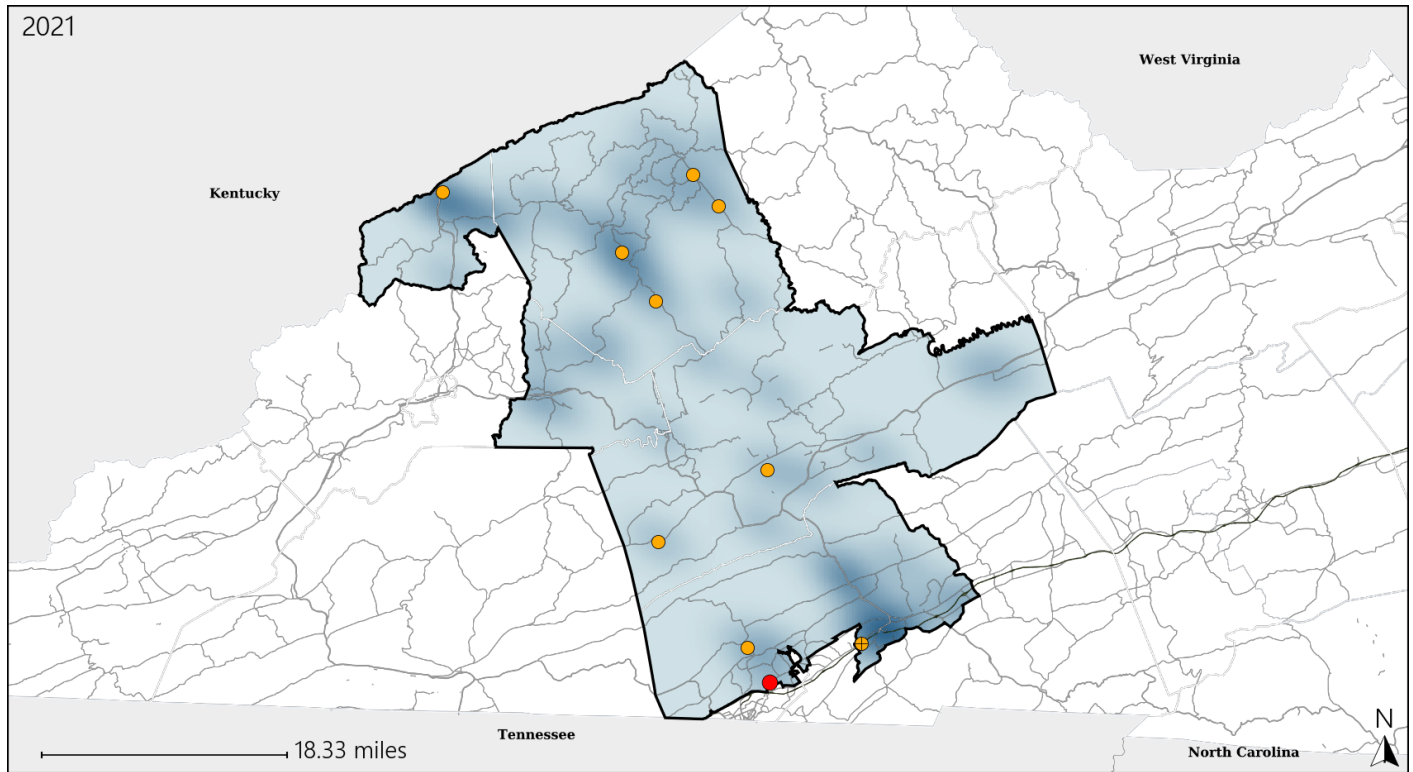
Available Crash Data - Calendar Year (CY)	CY 2018	CY 2019	CY 2020	CY 2021
Total Crashes	1165	1159	978	1054
Fatal Crashes	15	11	14	8
Injury Crashes	330	375	320	346

Report of Crashes for January 1st - December 31st, 2021

Virginia House District 4 Alcohol Crash Statistics

Report Generated April, 2022

	Count	Highest Time Period(s)	Highest Day(s)	Highest Month(s)
Fatal Crashes	1	9:00pm - 11:59pm	Monday	May
Resulting Fatalities	1	(100%)	(100%)	(100%)
Serious Injury Crashes	9	6:00pm - 8:59pm	Friday • Saturday	October
		Noon - 2:59pm	(44%)	(33%)



House District 4 Alcohol-Related Crashes

Interstate Crashes

Non-interstate Crashes

● Fatal

● Fatal

⊕ Serious Injury

⊕ Serious Injury

The blue gradient represents the density of all alcohol-related crashes.



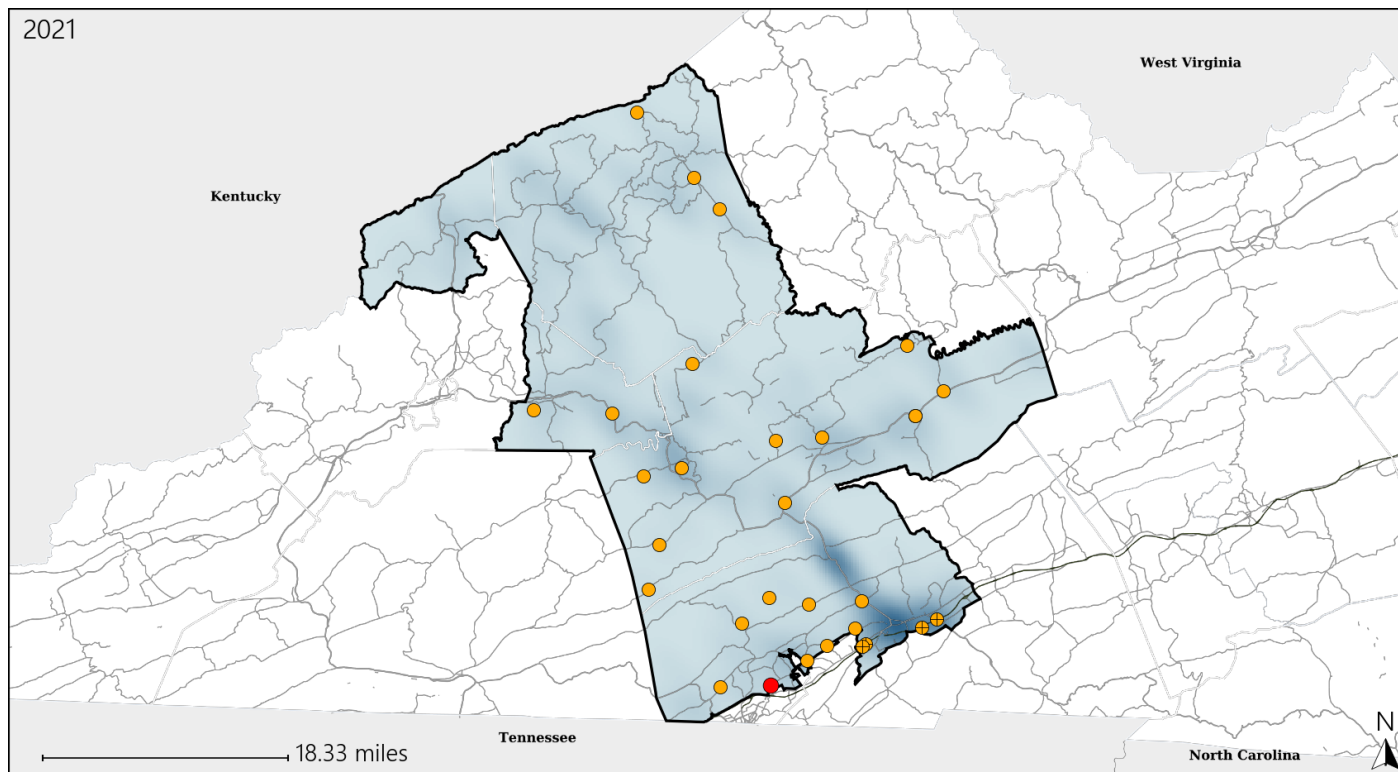
Available Crash Data - Calendar Year (CY)	CY 2018	CY 2019	CY 2020	CY 2021
Total Crashes	1165	1159	978	1054
Fatal Crashes	15	11	14	8
Injury Crashes	330	375	320	346
Alcohol-Related Fatal Crashes	4	2	3	1
Percent of Alcohol-Related Fatal Crashes to Total Fatal Crashes	27%	18%	21%	13%
Alcohol-Related Injury Crashes	17	25	27	23
Percent of Alcohol-Related Injury Crashes to Total Injury Crashes	5%	7%	8%	7%

Report of Crashes for January 1st - December 31st, 2021

Virginia House District 4 Speed Crash Statistics

Report Generated April, 2022

	Count	Highest Time Period(s)	Highest Day(s)	Highest Month(s)
Fatal Crashes	1	9:00pm - 11:59pm	Monday	May
Resulting Fatalities	1	(100%)	(100%)	(100%)
Serious Injury Crashes	29	6:00pm - 8:59pm	Sunday • Tuesday	November • October
		(24%)	(42%)	(28%)



House District 4 Speed-Related Crashes

Interstate Crashes

- Fatal
- Serious Injury

Non-interstate Crashes

- Fatal
- Serious Injury

The blue gradient represents the density of all speed-related crashes.

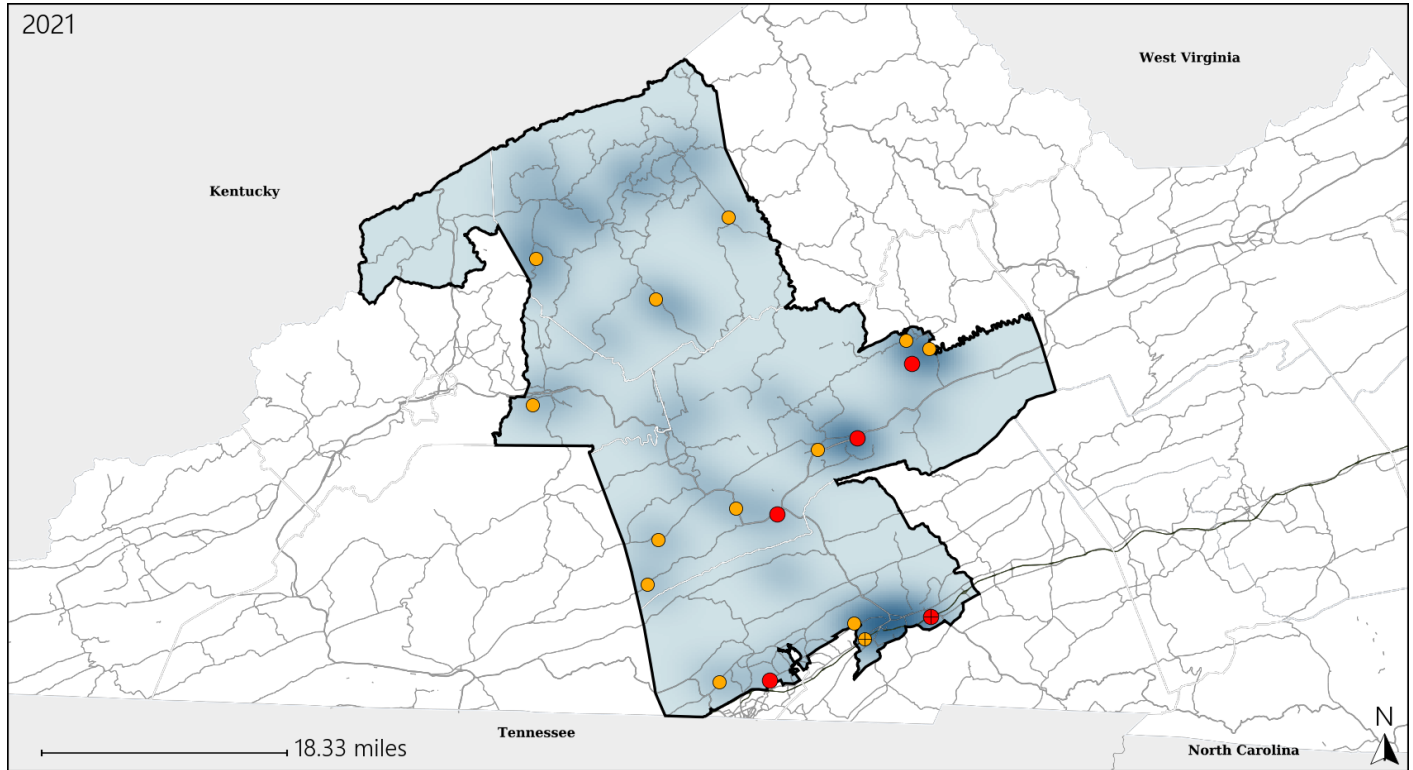


Available Crash Data - Calendar Year (CY)	CY 2018	CY 2019	CY 2020	CY 2021
Total Crashes	1165	1159	978	1054
Fatal Crashes	15	11	14	8
Injury Crashes	330	375	320	346
Speed-Related Fatal Crashes	6	4	6	1
Percent of Speed-Related Fatal Crashes to Total Fatal Crashes	40%	36%	43%	13%
Speed-Related Injury Crashes	113	132	106	107
Percent of Speed-Related Injury Crashes to Total Injury Crashes	34%	35%	33%	31%

Virginia House District 4 Unrestrained Crash Statistics

Report Generated April, 2022

	Count	Highest Time Period(s)	Highest Day(s)	Highest Month(s)
Fatal Crashes	5	Noon - 2:59pm	Monday	October
Unrestrained Fatalities	5	(40%)	(60%)	(40%)
Serious Injury Crashes	13	6:00pm - 8:59pm 9:00pm - 11:59pm	Friday	December • May
		(46%)	(38%)	(30%)



House District 4 Unrestrained-Related Crashes

Interstate Crashes

Non-interstate Crashes

● Fatal

● Fatal

⊕ Serious Injury

● Serious Injury

The blue gradient represents the density of all unrestrained-related crashes.

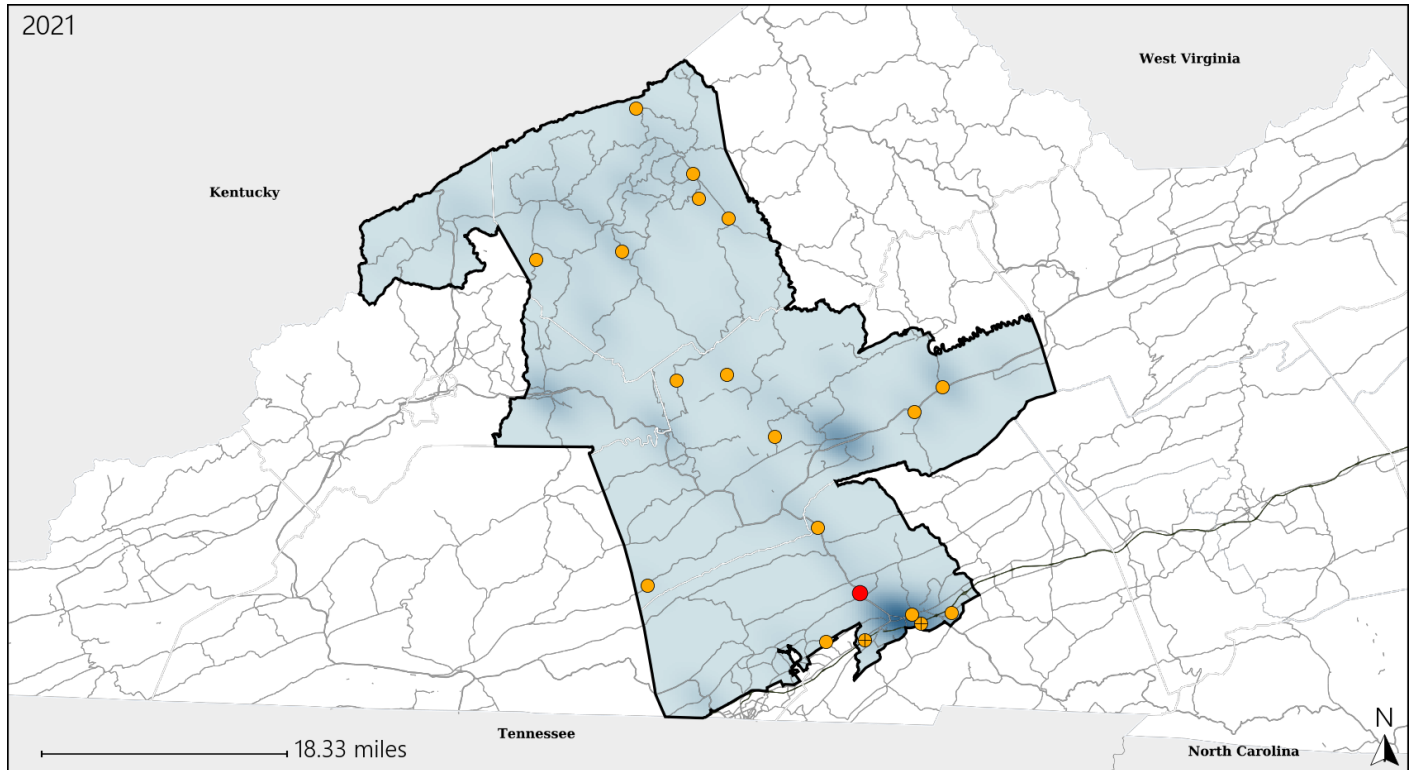


Available Crash Data - Calendar Year (CY)	CY 2018	CY 2019	CY 2020	CY 2021
Total Crashes	1165	1159	978	1054
Fatalities	15	12	16	10
Injuries	465	522	470	490
Unrestrained Fatalities	6	3	9	5
Percent of Unrestrained Fatalities to Total Fatalities	40%	25%	56%	50%
Unrestrained Injuries	39	54	66	47
Percent of Unrestrained Injuries to Total Injuries	8%	10%	14%	10%

Virginia House District 4 Distracted Driving Crash Statistics

Report Generated April, 2022

	Count	Highest Time Period(s)	Highest Day(s)	Highest Month(s)
Fatal Crashes	1	9:00am - 11:59am	Tuesday	November
Resulting Fatalities	1	(100%)	(100%)	(100%)
Serious Injury Crashes	18	Noon - 2:59pm	Saturday • Tuesday	July • November
		(28%)	(44%)	(34%)



House District 4 Distracted Driving-Related Crashes

Interstate Crashes

Non-interstate Crashes

● Fatal

● Fatal

⊕ Serious Injury

⊕ Serious Injury

The blue gradient represents the density of all distracted driving-related crashes.



Available Crash Data - Calendar Year (CY)	CY 2018	CY 2019	CY 2020	CY 2021
Total Crashes	1165	1159	978	1054
Fatal Crashes	15	11	14	8
Injury Crashes	330	375	320	346
Distracted Driving-Related Fatal Crashes	0	1	1	1
Percent of Distracted Driving-Related Fatal Crashes to Total Fatal Crashes	0%	9%	7%	13%
Distracted Driving-Related Injury Crashes	48	59	65	72
Percent of Distracted Driving-Related Injury Crashes to Total Injury Crashes	15%	16%	20%	21%