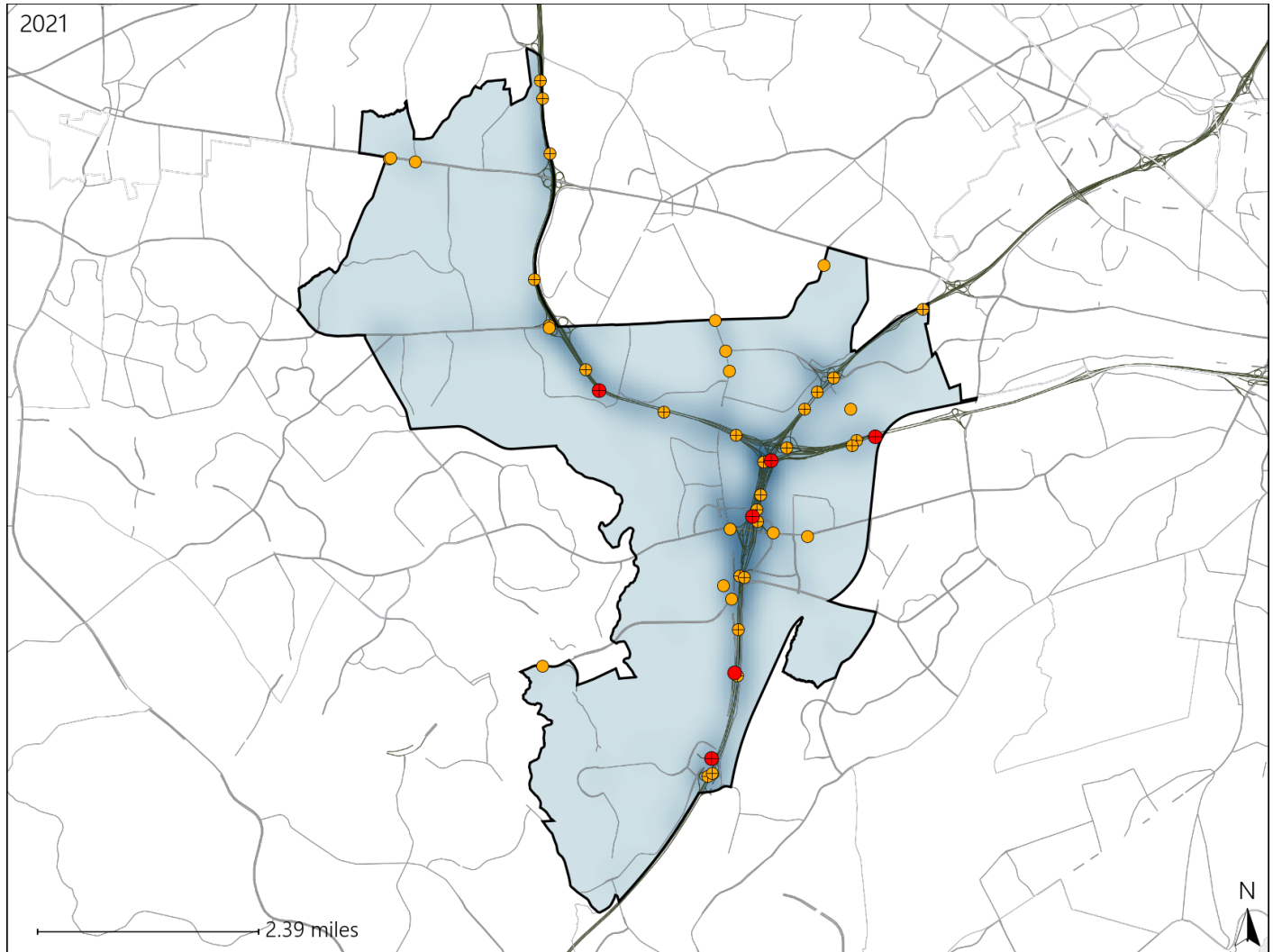


Virginia House District 39 Crash Statistics

Report Generated April, 2022

	Count	Highest Time Period(s)	Highest Day(s)	Highest Month(s)
Fatal Crashes	6	Midnight - 2:59am	Saturday • Thursday	August
Resulting Fatalities	6	(33%)	(66%)	(33%)
Serious Injury Crashes	40	9:00pm - 11:59pm	Friday • Monday	June
		(25%)	(36%)	(18%)



House District 39 Crashes

Interstate Crashes

- Fatal
- Serious Injury

Non-interstate Crashes

- Fatal
- Serious Injury

The blue gradient represents the density of all crashes.



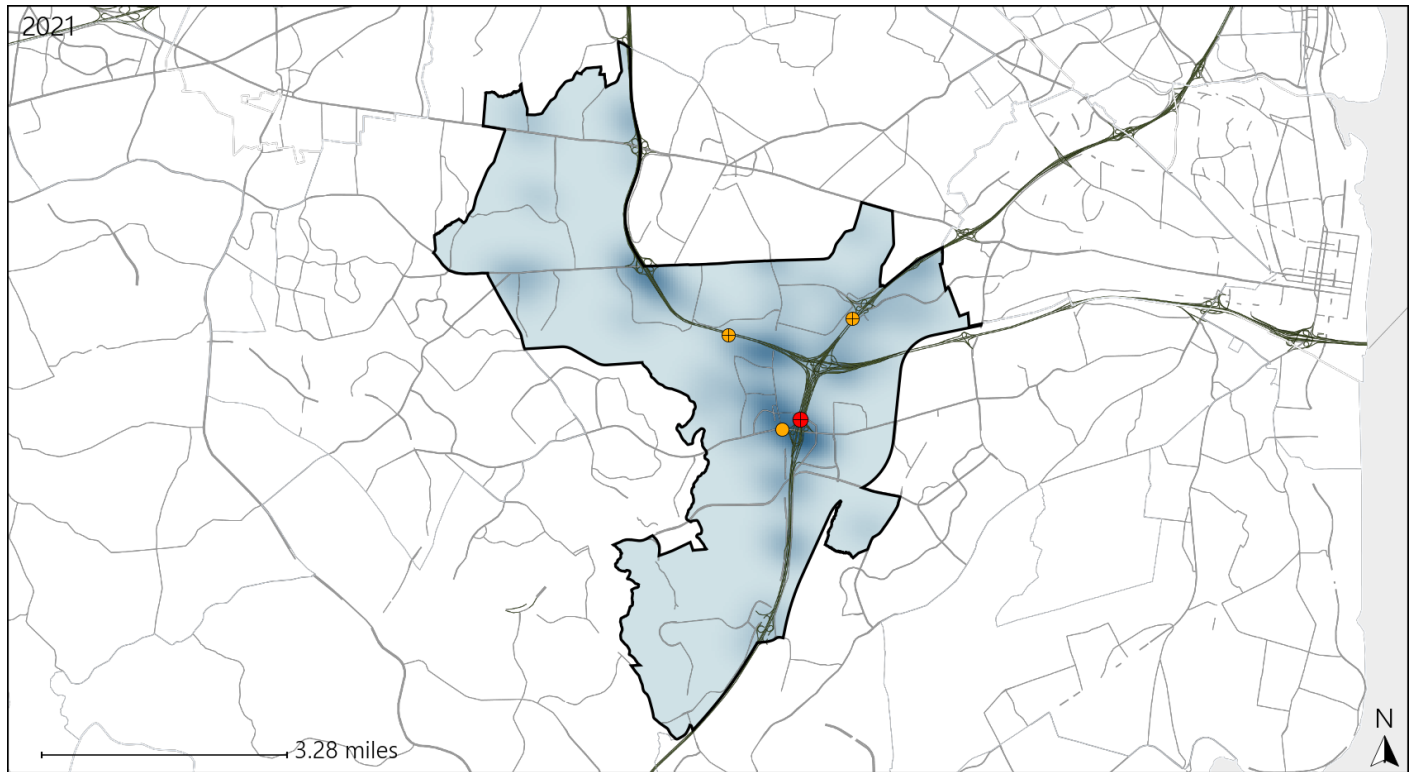
Available Crash Data - Calendar Year (CY)	CY 2018	CY 2019	CY 2020	CY 2021
Total Crashes	1834	1840	1329	1478
Fatal Crashes	6	6	9	6
Injury Crashes	537	517	335	424

Report of Crashes for January 1st - December 31st, 2021

Virginia House District 39 Alcohol Crash Statistics

Report Generated April, 2022

	Count	Highest Time Period(s)	Highest Day(s)	Highest Month(s)
Fatal Crashes	1	6:00am - 8:59am	Saturday	August
Resulting Fatalities	1	(100%)	(100%)	(100%)
Serious Injury Crashes	3	3:00am - 5:59am 9:00pm - 11:59pm	Monday • Saturday	January • July
		(66%)	(66%)	(66%)



House District 39 Alcohol-Related Crashes

Interstate Crashes

Non-interstate Crashes

- Fatal
- Serious Injury

- Fatal
- Serious Injury

The blue gradient represents the density of all alcohol-related crashes.

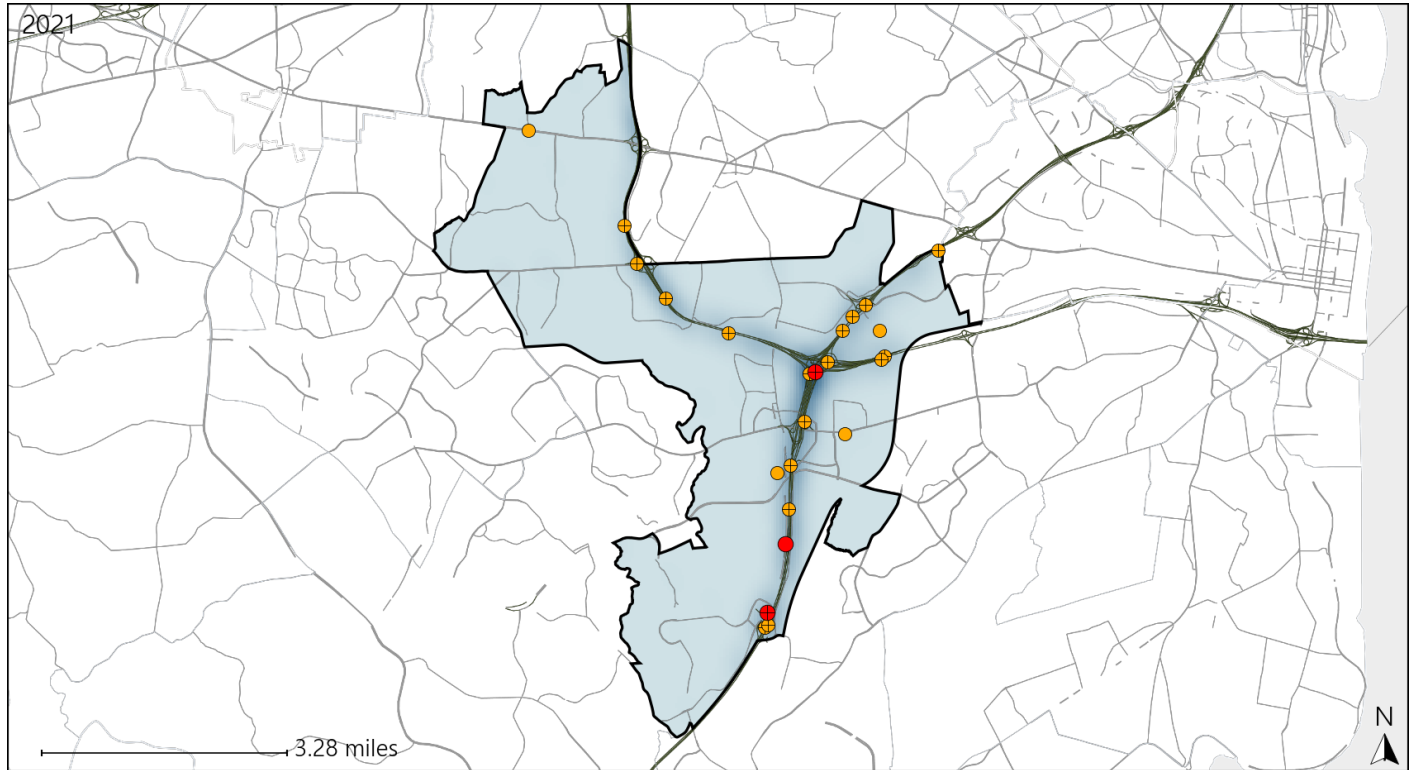


Available Crash Data - Calendar Year (CY)	CY 2018	CY 2019	CY 2020	CY 2021
Total Crashes	1834	1840	1329	1478
Fatal Crashes	6	6	9	6
Injury Crashes	537	517	335	424
Alcohol-Related Fatal Crashes	2	1	3	1
Percent of Alcohol-Related Fatal Crashes to Total Fatal Crashes	33%	17%	33%	17%
Alcohol-Related Injury Crashes	25	27	26	28
Percent of Alcohol-Related Injury Crashes to Total Injury Crashes	5%	5%	8%	7%

Virginia House District 39 Speed Crash Statistics

Report Generated April, 2022

	Count	Highest Time Period(s)	Highest Day(s)	Highest Month(s)
Fatal Crashes	3	3:00am - 5:59am	Saturday • Thursday	December • July
Resulting Fatalities	3	9:00am - 11:59am (66%)	(66%)	(66%)
Serious Injury Crashes	21	9:00pm - 11:59pm (29%)	Sunday (24%)	July (19%)



House District 39 Speed-Related Crashes

Interstate Crashes

Non-interstate Crashes

- Fatal
- Serious Injury

- Fatal
- Serious Injury

The blue gradient represents the density of all speed-related crashes.

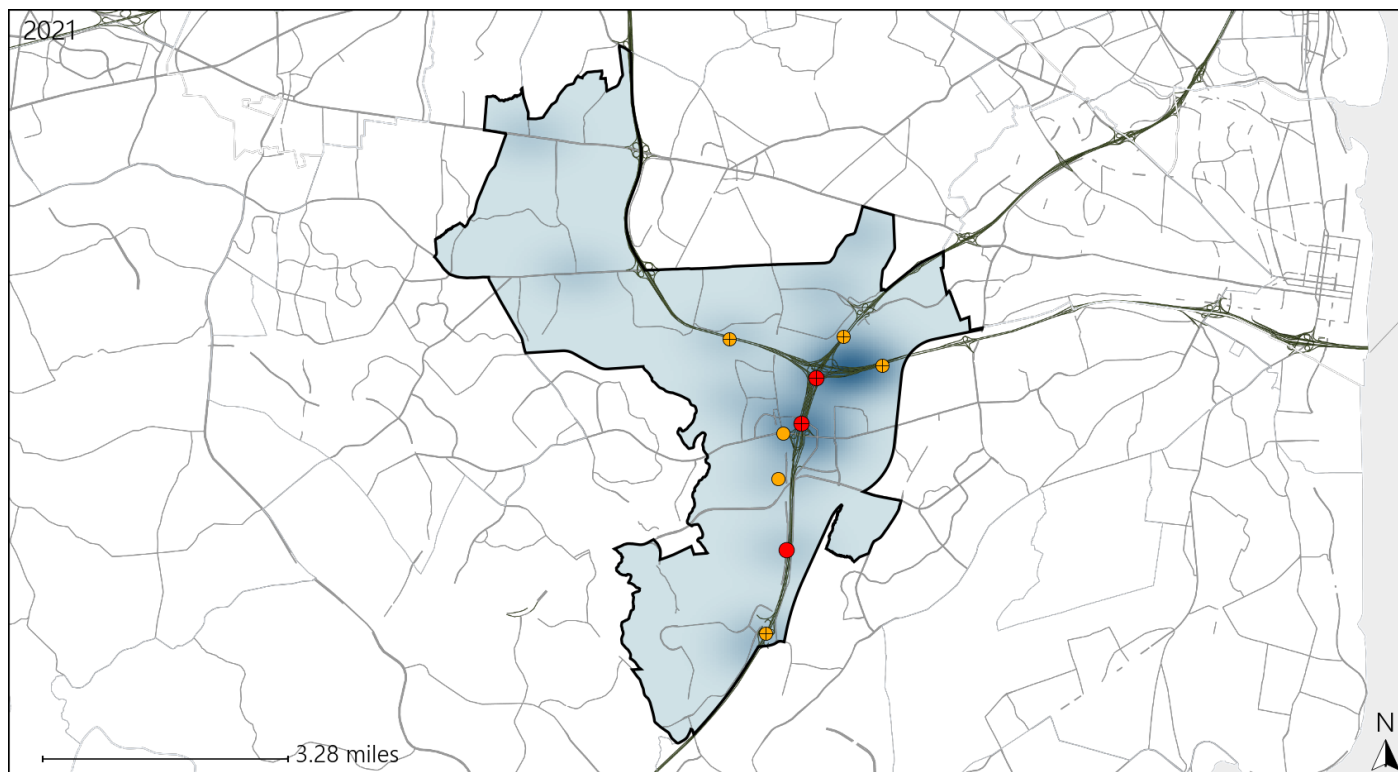


Available Crash Data - Calendar Year (CY)	CY 2018	CY 2019	CY 2020	CY 2021
Total Crashes	1834	1840	1329	1478
Fatal Crashes	6	6	9	6
Injury Crashes	537	517	335	424
Speed-Related Fatal Crashes	4	1	5	3
Percent of Speed-Related Fatal Crashes to Total Fatal Crashes	67%	17%	56%	50%
Speed-Related Injury Crashes	183	193	123	179
Percent of Speed-Related Injury Crashes to Total Injury Crashes	34%	37%	37%	42%

Virginia House District 39 Unrestrained Crash Statistics

Report Generated April, 2022

	Count	Highest Time Period(s)	Highest Day(s)	Highest Month(s)
Fatal Crashes	3	6:00am - 8:59am	Saturday • Thursday	August • December
Unrestrained Fatalities	3	9:00am - 11:59am (66%)	(66%)	(66%)
Serious Injury Crashes	6	6:00am - 8:59am (33%)	Saturday (33%)	December • January (34%)



House District 39 Unrestrained-Related Crashes

Interstate Crashes

Non-interstate Crashes

● Fatal

● Fatal

● Serious Injury

● Serious Injury

The blue gradient represents the density of all unrestrained-related crashes.

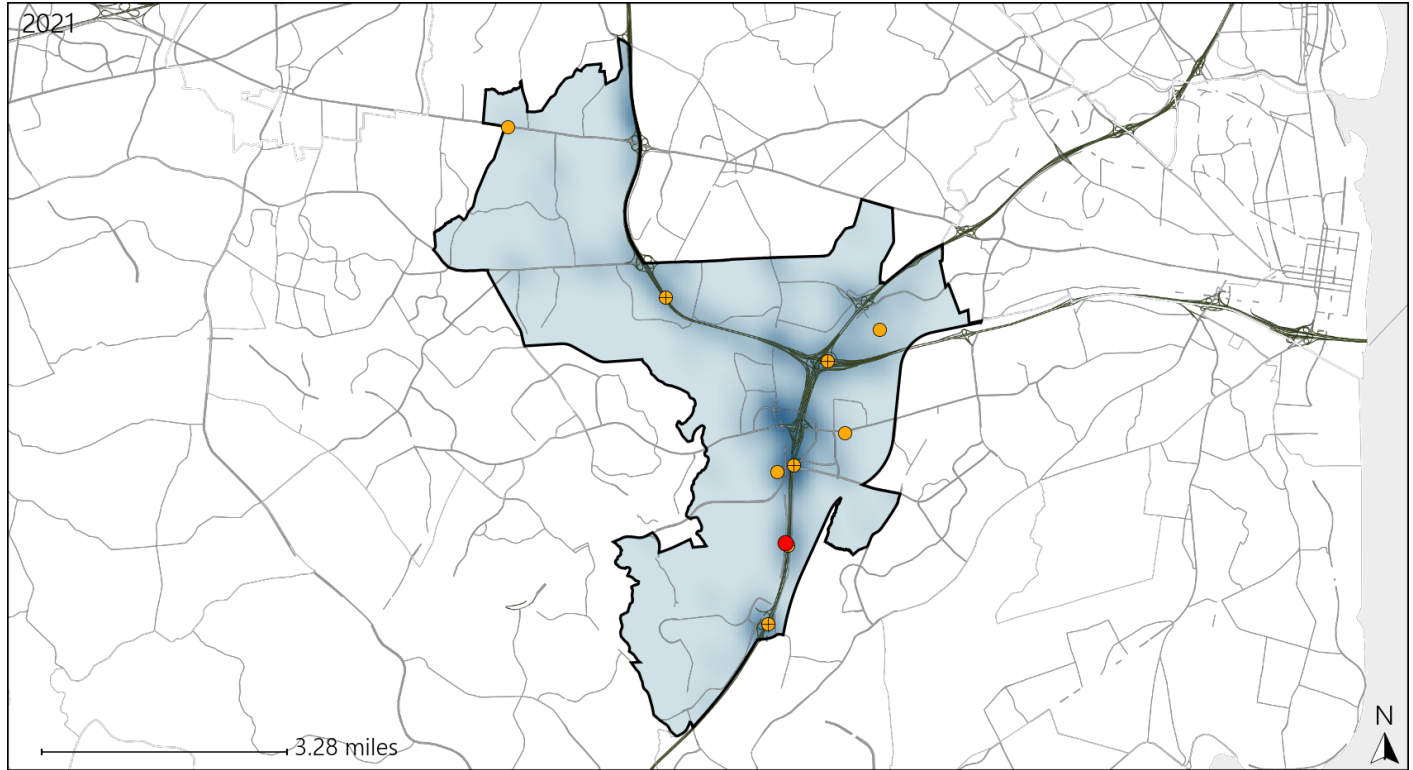


Available Crash Data - Calendar Year (CY)	CY 2018	CY 2019	CY 2020	CY 2021
Total Crashes	1834	1840	1329	1478
Fatalities	6	6	9	6
Injuries	775	793	481	675
Unrestrained Fatalities	0	1	2	3
Percent of Unrestrained Fatalities to Total Fatalities	0%	17%	22%	50%
Unrestrained Injuries	11	18	26	22
Percent of Unrestrained Injuries to Total Injuries	1%	2%	5%	3%

Virginia House District 39 Distracted Driving Crash Statistics

Report Generated April, 2022

	Count	Highest Time Period(s)	Highest Day(s)	Highest Month(s)
Fatal Crashes	1	9:00am - 11:59am	Thursday	July
Resulting Fatalities	1	(100%)	(100%)	(100%)
Serious Injury Crashes	9	9:00pm - 11:59pm	Monday • Sunday	May
		(33%)	(44%)	(33%)



House District 39 Distracted Driving-Related Crashes

Interstate Crashes

Non-interstate Crashes

- Fatal
- ⊕ Serious Injury

- Fatal
- Serious Injury

The blue gradient represents the density of all distracted driving-related crashes.



Available Crash Data - Calendar Year (CY)	CY 2018	CY 2019	CY 2020	CY 2021
Total Crashes	1834	1840	1329	1478
Fatal Crashes	6	6	9	6
Injury Crashes	537	517	335	424
Distracted Driving-Related Fatal Crashes	2	1	2	1
Percent of Distracted Driving-Related Fatal Crashes to Total Fatal Crashes	33%	17%	22%	17%
Distracted Driving-Related Injury Crashes	118	105	79	83
Percent of Distracted Driving-Related Injury Crashes to Total Injury Crashes	22%	20%	24%	20%