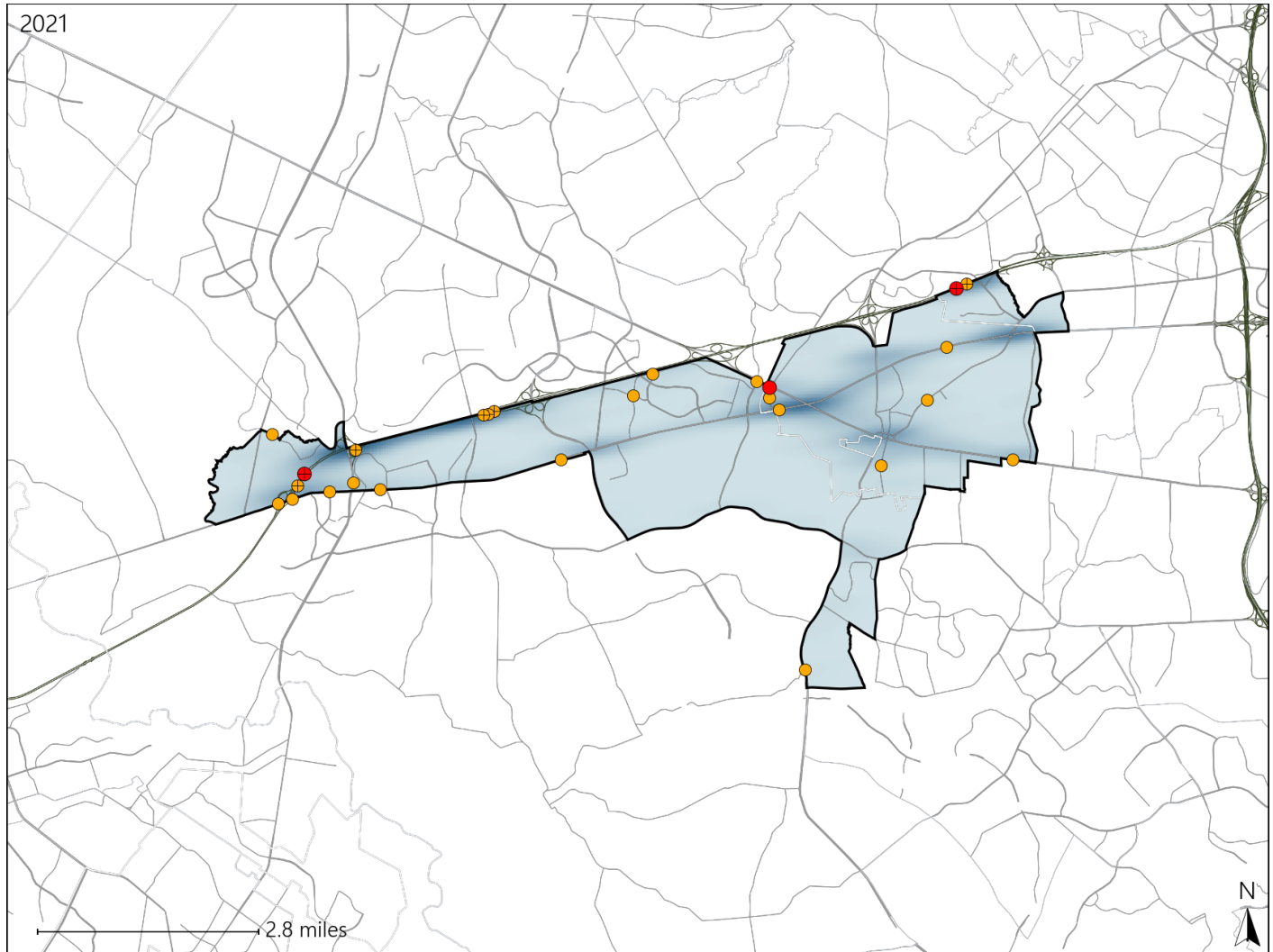


Virginia House District 37 Crash Statistics

Report Generated April, 2022

	Count	Highest Time Period(s)	Highest Day(s)	Highest Month(s)
Fatal Crashes	3	Noon - 2:59pm	Friday	July • November
Resulting Fatalities	3	(67%)	(67%)	(66%)
Serious Injury Crashes	23	6:00pm - 8:59pm	Friday	September
		(30%)	(22%)	(22%)



House District 37 Crashes

Interstate Crashes

- Fatal
- Serious Injury

Non-interstate Crashes

- Fatal
- Serious Injury

The blue gradient represents the density of all crashes.

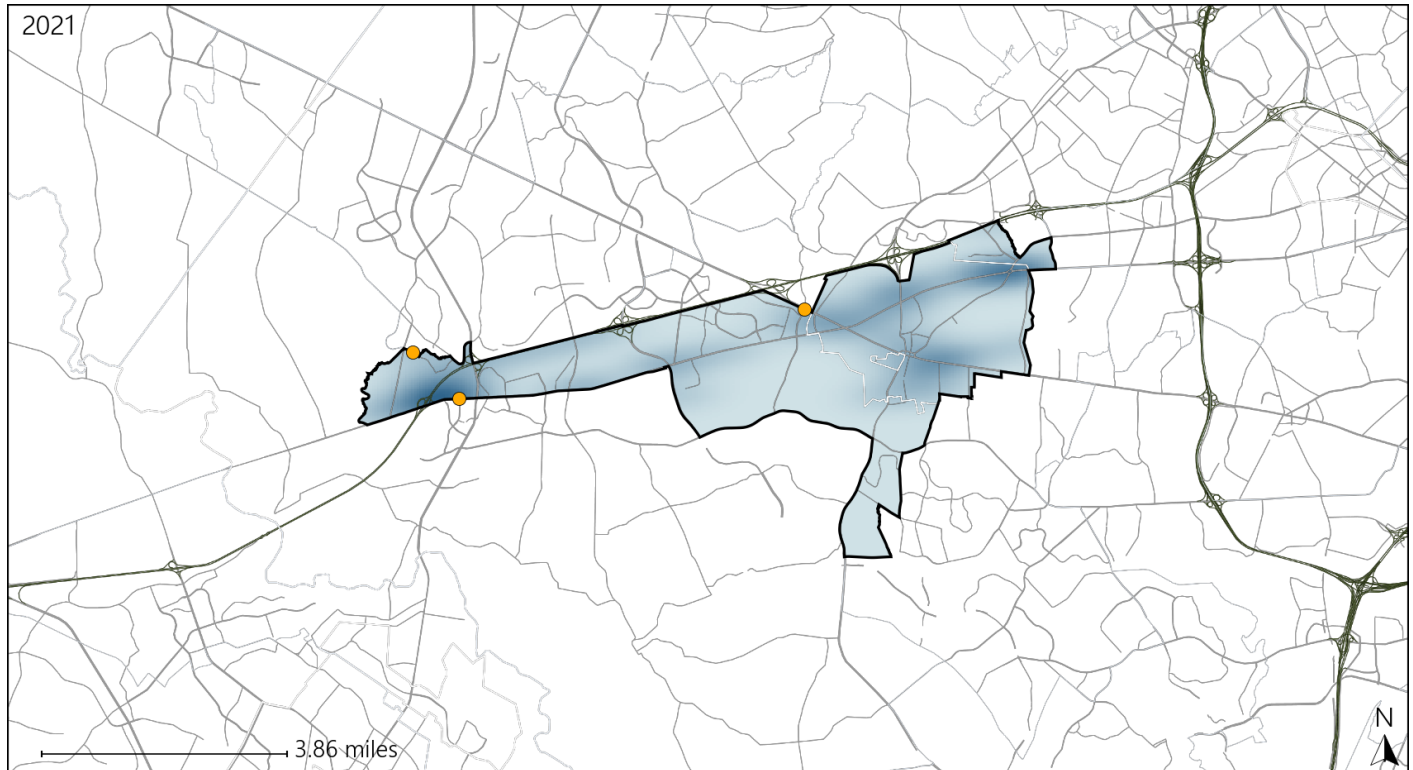


Available Crash Data - Calendar Year (CY)	CY 2018	CY 2019	CY 2020	CY 2021
Total Crashes	1167	1342	844	1051
Fatal Crashes	4	5	3	3
Injury Crashes	337	318	190	221

Virginia House District 37 Alcohol Crash Statistics

Report Generated April, 2022

	Count	Highest Time Period(s)	Highest Day(s)	Highest Month(s)
Fatal Crashes	0	-	-	-
Resulting Fatalities	0	-	-	-
Serious Injury Crashes	3	9:00pm - 11:59pm (67%)	Saturday • Sunday (66%)	June • March (66%)



House District 37 Alcohol-Related Crashes

Interstate Crashes

Non-interstate Crashes

- Fatal
- Serious Injury

- Fatal
- Serious Injury

The blue gradient represents the density of all alcohol-related crashes.

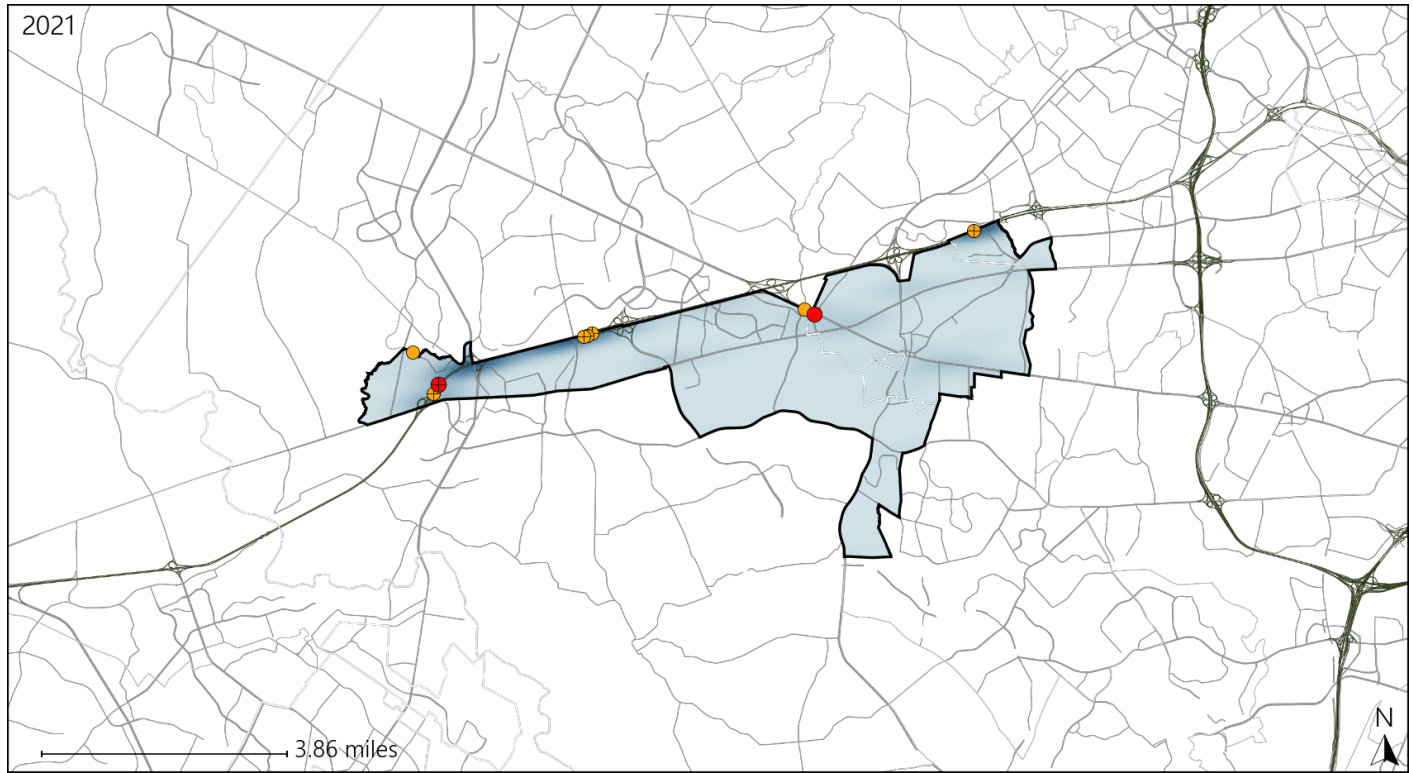


Available Crash Data - Calendar Year (CY)	CY 2018	CY 2019	CY 2020	CY 2021
Total Crashes	1167	1342	844	1051
Fatal Crashes	4	5	3	3
Injury Crashes	337	318	190	221
Alcohol-Related Fatal Crashes	2	1	1	0
Percent of Alcohol-Related Fatal Crashes to Total Fatal Crashes	50%	20%	33%	0%
Alcohol-Related Injury Crashes	15	18	13	14
Percent of Alcohol-Related Injury Crashes to Total Injury Crashes	4%	6%	7%	6%

Virginia House District 37 Speed Crash Statistics

Report Generated April, 2022

	Count	Highest Time Period(s)	Highest Day(s)	Highest Month(s)
Fatal Crashes	2	6:00am - 8:59am	Friday	November • October
Resulting Fatalities	2	Noon - 2:59pm (100%)	(100%)	(100%)
Serious Injury Crashes	7	6:00am - 8:59am 6:00pm - 8:59pm (58%)	Friday • Saturday (58%)	August • February (28%)



House District 37 Speed-Related Crashes

Interstate Crashes

Non-interstate Crashes

● Fatal

● Fatal

⊕ Serious Injury

⊕ Serious Injury

The blue gradient represents the density of all speed-related crashes.

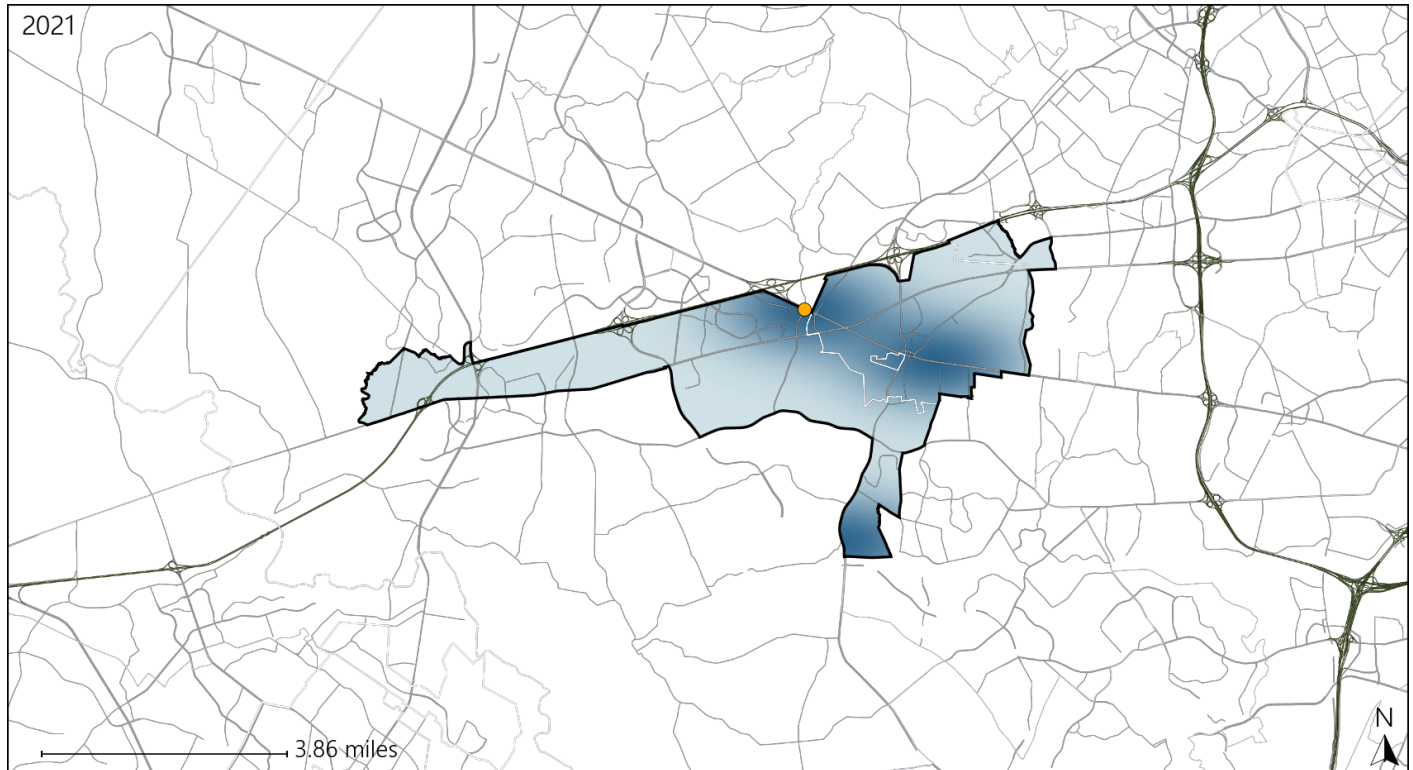


Available Crash Data - Calendar Year (CY)	CY 2018	CY 2019	CY 2020	CY 2021
Total Crashes	1167	1342	844	1051
Fatal Crashes	4	5	3	3
Injury Crashes	337	318	190	221
Speed-Related Fatal Crashes	0	1	1	2
Percent of Speed-Related Fatal Crashes to Total Fatal Crashes	0%	20%	33%	67%
Speed-Related Injury Crashes	57	62	40	48
Percent of Speed-Related Injury Crashes to Total Injury Crashes	17%	19%	21%	22%

Virginia House District 37 Unrestrained Crash Statistics

Report Generated April, 2022

	Count	Highest Time Period(s)	Highest Day(s)	Highest Month(s)
Fatal Crashes	0	-	-	-
Unrestrained Fatalities	0			
Serious Injury Crashes	1	9:00pm - 11:59pm (100%)	Saturday (100%)	March (100%)



House District 37 Unrestrained-Related Crashes

Interstate Crashes

- Fatal
- Serious Injury

Non-interstate Crashes

- Fatal
- Serious Injury

The blue gradient represents the density of all unrestrained-related crashes.

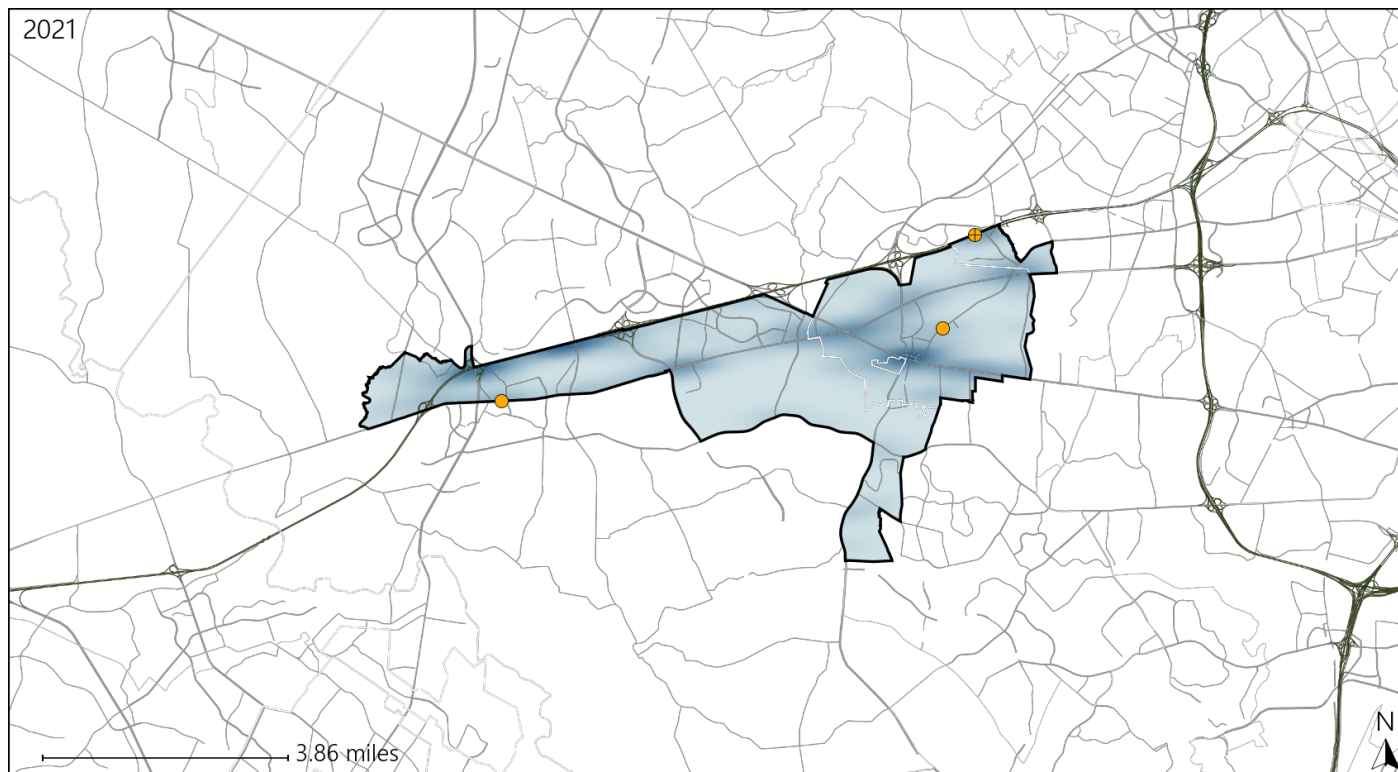


Available Crash Data - Calendar Year (CY)	CY 2018	CY 2019	CY 2020	CY 2021
Total Crashes	1167	1342	844	1051
Fatalities	4	5	3	3
Injuries	489	463	287	347
Unrestrained Fatalities	0	0	0	0
Percent of Unrestrained Fatalities to Total Fatalities	0%	0%	0%	0%
Unrestrained Injuries	9	8	6	4
Percent of Unrestrained Injuries to Total Injuries	2%	2%	2%	1%

Virginia House District 37 Distracted Driving Crash Statistics

Report Generated April, 2022

	Count	Highest Time Period(s)	Highest Day(s)	Highest Month(s)
Fatal Crashes	0	-	-	-
Resulting Fatalities	0	-	-	-
Serious Injury Crashes	3	6:00pm - 8:59pm (67%)	Friday (100%)	September (67%)



House District 37 Distracted Driving-Related Crashes

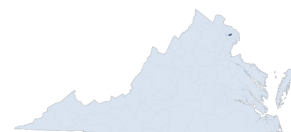
Interstate Crashes

- Fatal
- Serious Injury

Non-interstate Crashes

- Fatal
- Serious Injury

The blue gradient represents the density of all distracted driving-related crashes.



Available Crash Data - Calendar Year (CY)	CY 2018	CY 2019	CY 2020	CY 2021
Total Crashes	1167	1342	844	1051
Fatal Crashes	4	5	3	3
Injury Crashes	337	318	190	221
Distracted Driving-Related Fatal Crashes	0	1	1	0
Percent of Distracted Driving-Related Fatal Crashes to Total Fatal Crashes	0%	20%	33%	0%
Distracted Driving-Related Injury Crashes	81	49	28	32
Percent of Distracted Driving-Related Injury Crashes to Total Injury Crashes	24%	15%	15%	14%