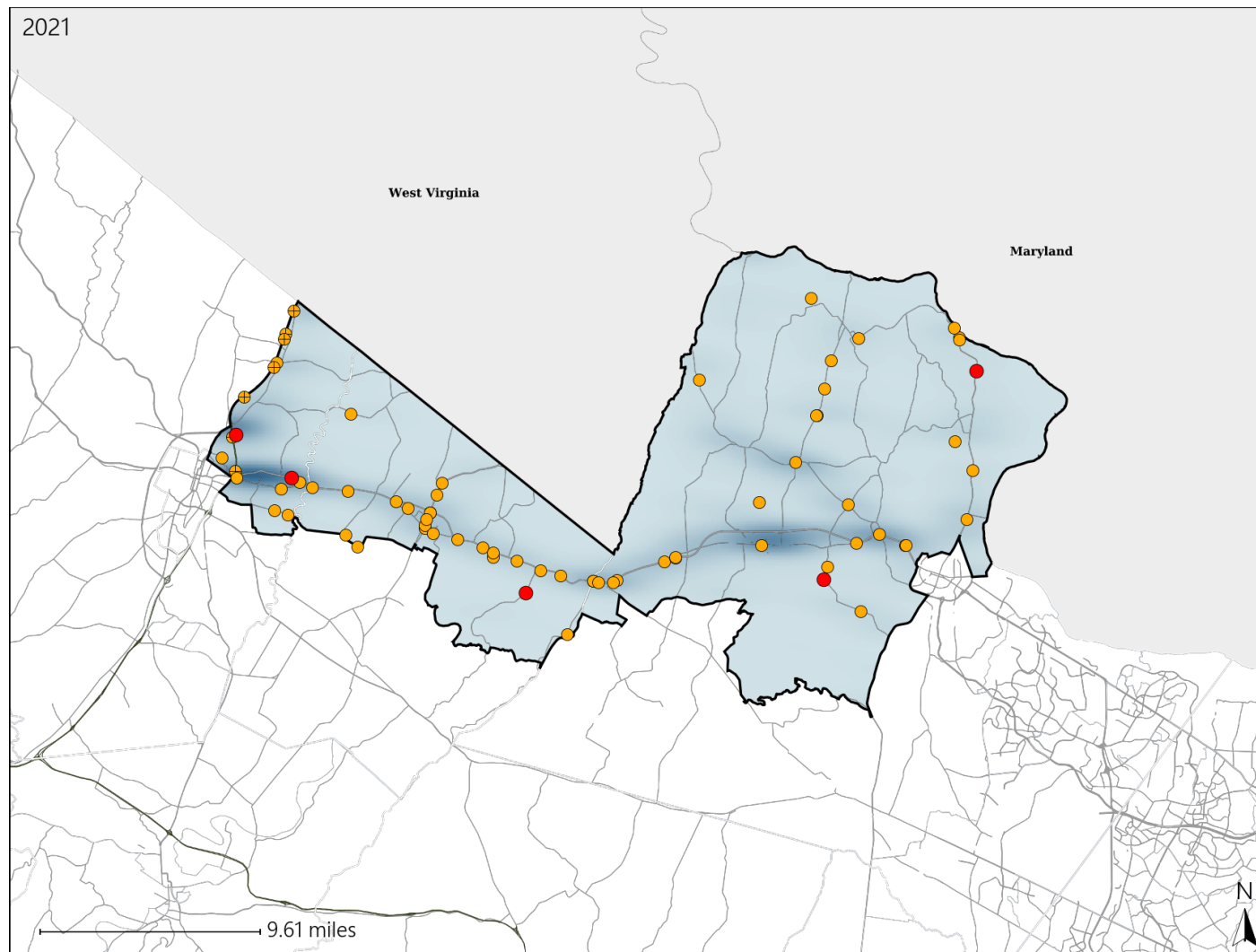


Report of Crashes for January 1<sup>st</sup> - December 31<sup>st</sup>, 2021

# Virginia House District 33 Crash Statistics

Report Generated April, 2022

	Count	Highest Time Period(s)	Highest Day(s)	Highest Month(s)
<b>Fatal Crashes</b>	<b>5</b>	<b>3:00pm - 5:59pm</b>	<b>Saturday • Sunday</b>	<b>August • December</b>
<b>Resulting Fatalities</b>	<b>5</b>	<b>(60%)</b>	<b>(80%)</b>	<b>(40%)</b>
<b>Serious Injury Crashes</b>	<b>69</b>	<b>Noon - 2:59pm</b>	<b>Saturday</b>	<b>June • September</b>
		<b>(25%)</b>	<b>(26%)</b>	<b>(26%)</b>



## House District 33 Crashes

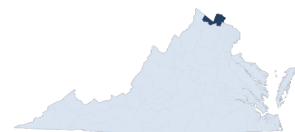
Interstate Crashes

- Fatal
- Serious Injury

Non-interstate Crashes

- Fatal
- Serious Injury

The blue gradient represents the density of all crashes.

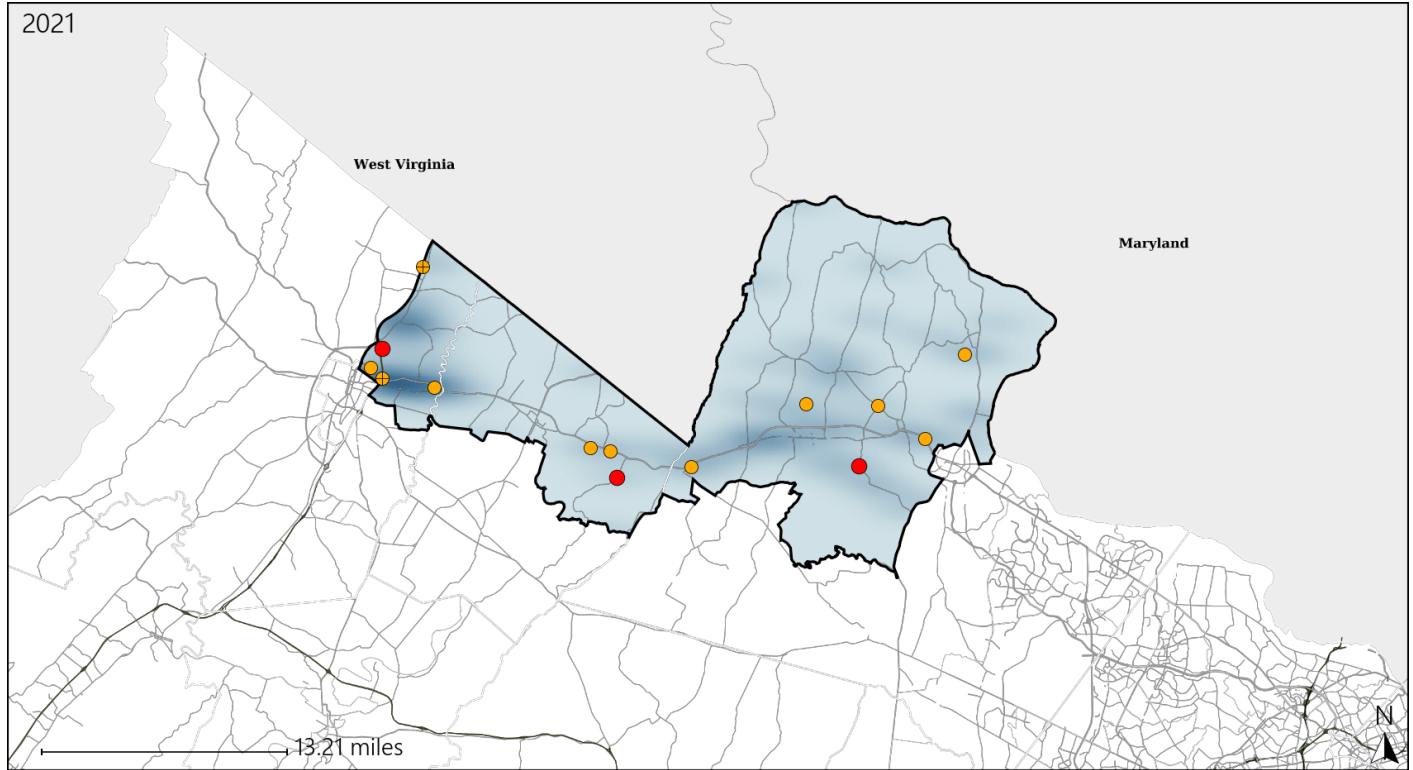


Available Crash Data - Calendar Year (CY)	CY 2018	CY 2019	CY 2020	CY 2021
Total Crashes	1412	1406	1086	1259
Fatal Crashes	4	10	6	5
Injury Crashes	345	315	254	288

# Virginia House District 33 Alcohol Crash Statistics

Report Generated April, 2022

	Count	Highest Time Period(s)	Highest Day(s)	Highest Month(s)
<b>Fatal Crashes</b>	<b>3</b>	<b>3:00pm - 5:59pm</b>	<b>Saturday</b>	<b>February • January</b>
<b>Resulting Fatalities</b>	<b>3</b>	<b>(67%)</b>	<b>(67%)</b>	<b>(66%)</b>
<b>Serious Injury Crashes</b>	<b>11</b>	<b>6:00pm - 8:59pm</b>	<b>Wednesday</b>	<b>December • January</b>
		<b>(45%)</b>	<b>(27%)</b>	<b>(36%)</b>



## House District 33 Alcohol-Related Crashes

Interstate Crashes

Non-interstate Crashes

- Fatal
- Serious Injury

- Fatal
- Serious Injury

The blue gradient represents the density of all alcohol-related crashes.

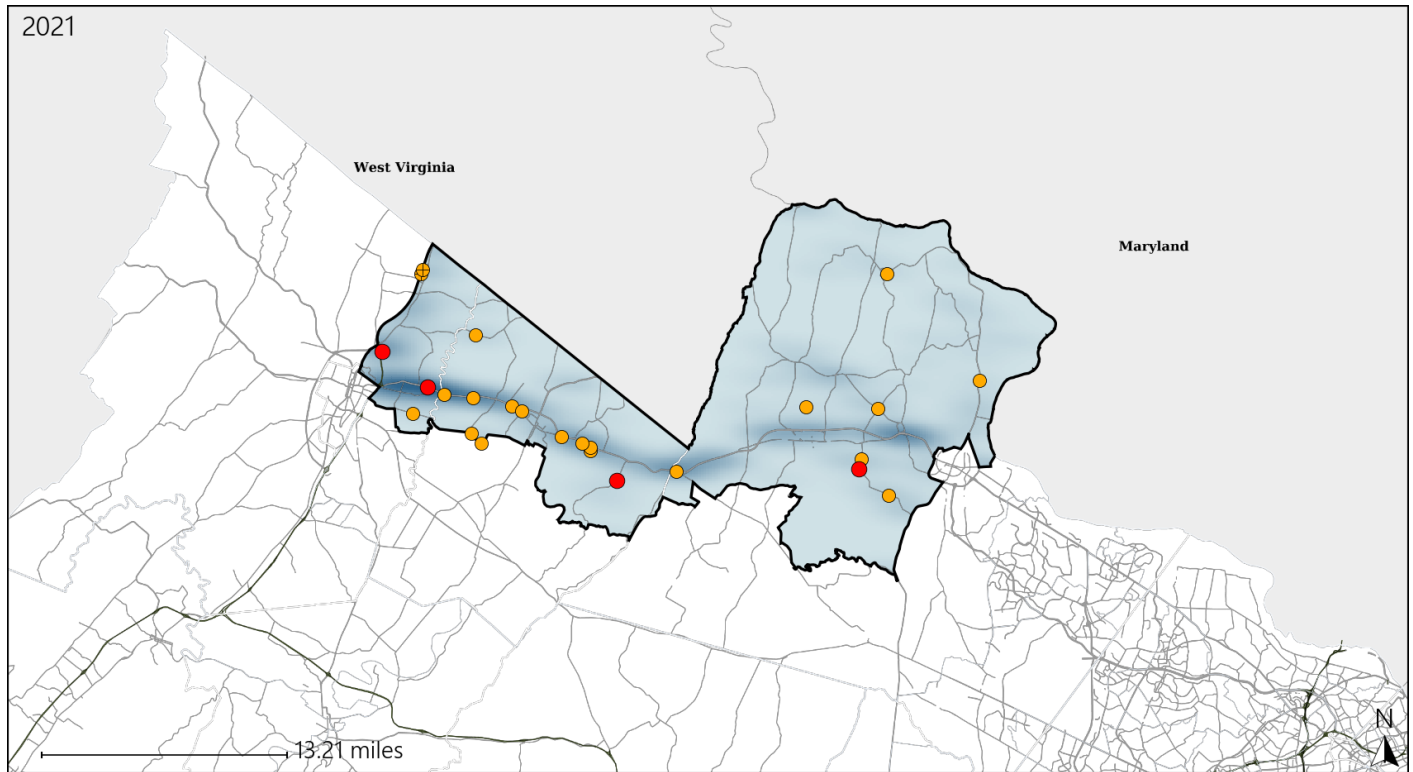


Available Crash Data - Calendar Year (CY)	CY 2018	CY 2019	CY 2020	CY 2021
Total Crashes	1412	1406	1086	1259
Fatal Crashes	4	10	6	5
Injury Crashes	345	315	254	288
Alcohol-Related Fatal Crashes	2	3	3	3
Percent of Alcohol-Related Fatal Crashes to Total Fatal Crashes	50%	30%	50%	60%
Alcohol-Related Injury Crashes	36	37	27	30
Percent of Alcohol-Related Injury Crashes to Total Injury Crashes	10%	12%	11%	10%

# Virginia House District 33 Speed Crash Statistics

Report Generated April, 2022

	Count	Highest Time Period(s)	Highest Day(s)	Highest Month(s)
<b>Fatal Crashes</b>	<b>4</b>	<b>3:00pm - 5:59pm</b>	<b>Saturday • Sunday</b>	<b>August • February</b>
<b>Resulting Fatalities</b>	<b>4</b>	<b>(75%)</b>	<b>(100%)</b>	<b>(50%)</b>
<b>Serious Injury Crashes</b>	<b>21</b>	<b>Midnight - 2:59am</b>	<b>Saturday</b>	<b>June</b>
		<b>Noon - 2:59pm</b>	<b>(48%)</b>	<b>(24%)</b>
		<b>(48%)</b>		



## House District 33 Speed-Related Crashes

Interstate Crashes

Non-interstate Crashes

● Fatal

● Fatal

⊕ Serious Injury

● Serious Injury

The blue gradient represents the density of all speed-related crashes.

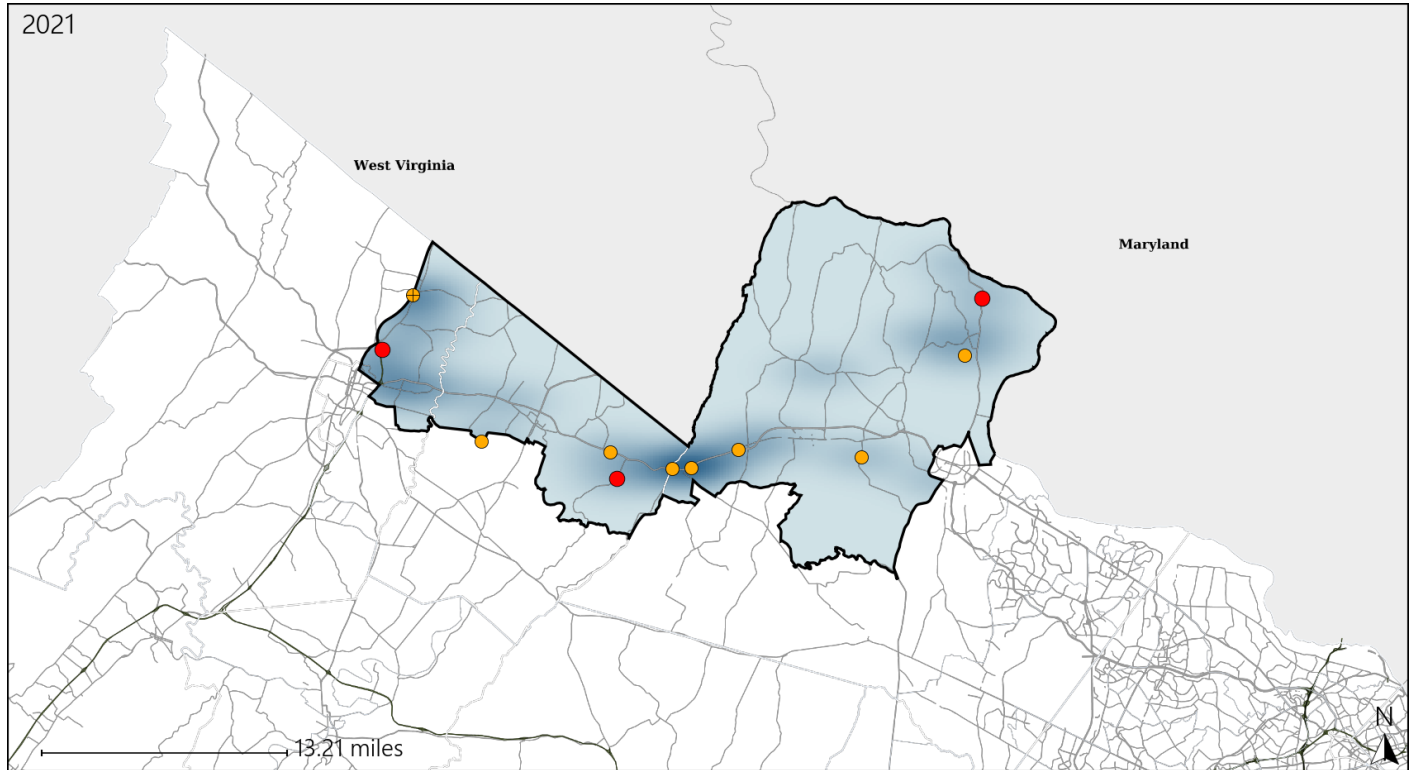


Available Crash Data - Calendar Year (CY)	CY 2018	CY 2019	CY 2020	CY 2021
Total Crashes	1412	1406	1086	1259
Fatal Crashes	4	10	6	5
Injury Crashes	345	315	254	288
Speed-Related Fatal Crashes	1	2	3	4
Percent of Speed-Related Fatal Crashes to Total Fatal Crashes	25%	20%	50%	80%
Speed-Related Injury Crashes	68	67	72	81
Percent of Speed-Related Injury Crashes to Total Injury Crashes	20%	21%	28%	28%

# Virginia House District 33 Unrestrained Crash Statistics

Report Generated April, 2022

	Count	Highest Time Period(s)	Highest Day(s)	Highest Month(s)
<b>Fatal Crashes</b>	<b>3</b>	3:00am - 5:59am	Saturday	December • January
<b>Unrestrained Fatalities</b>	<b>3</b>	3:00pm - 5:59pm (66%)	(67%)	(66%)
<b>Serious Injury Crashes</b>	<b>8</b>	6:00pm - 8:59pm (50%)	Sunday • Tuesday (50%)	June (25%)



## House District 33 Unrestrained-Related Crashes

Interstate Crashes

Non-interstate Crashes

- Fatal
- Serious Injury

- Fatal
- Serious Injury

The blue gradient represents the density of all unrestrained-related crashes.

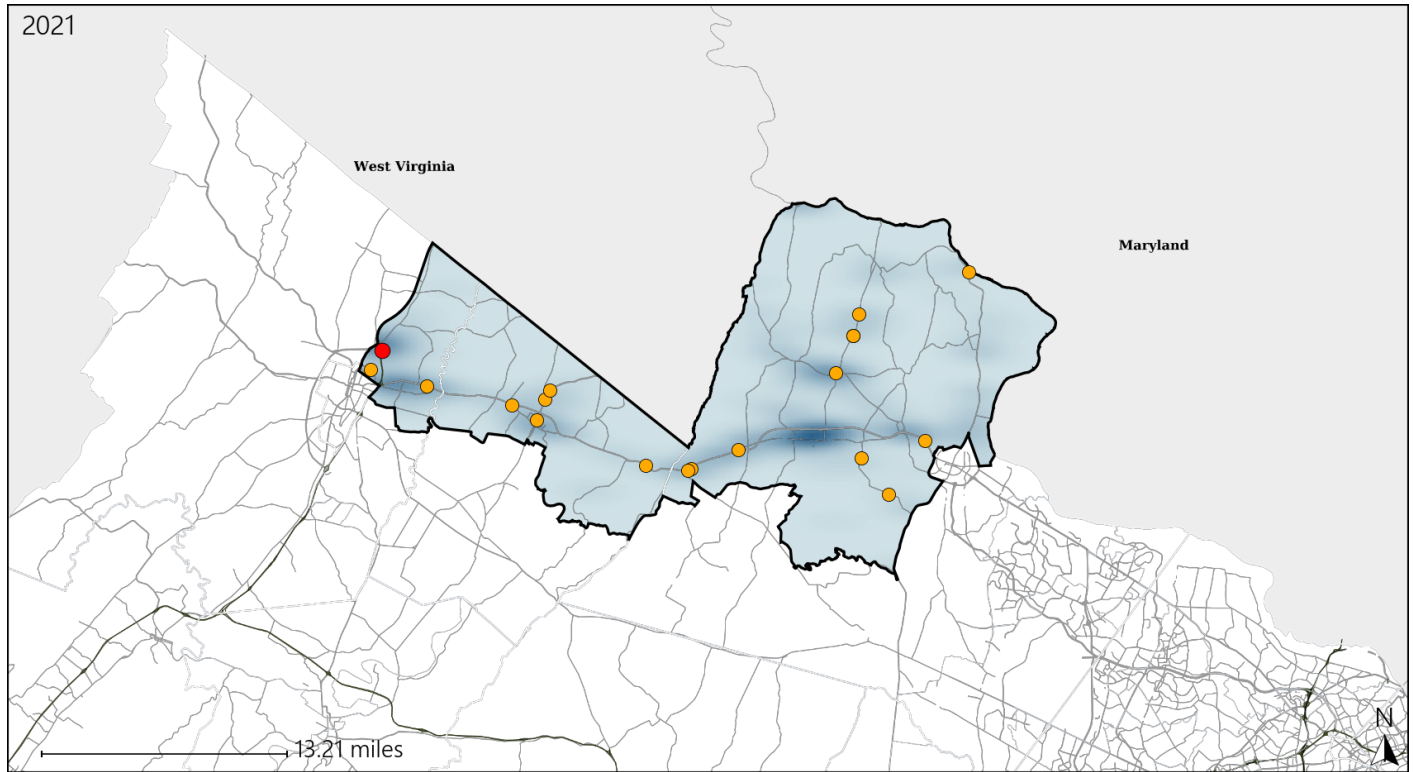


Available Crash Data - Calendar Year (CY)	CY 2018	CY 2019	CY 2020	CY 2021
Total Crashes	1412	1406	1086	1259
Fatalities	4	10	6	5
Injuries	512	484	378	431
Unrestrained Fatalities	2	2	0	3
Percent of Unrestrained Fatalities to Total Fatalities	50%	20%	0%	60%
Unrestrained Injuries	30	28	19	30
Percent of Unrestrained Injuries to Total Injuries	6%	6%	5%	7%

# Virginia House District 33 Distracted Driving Crash Statistics

Report Generated April, 2022

	Count	Highest Time Period(s)	Highest Day(s)	Highest Month(s)
<b>Fatal Crashes</b>	<b>1</b>	<b>3:00am - 5:59am</b>	<b>Saturday</b>	<b>January</b>
<b>Resulting Fatalities</b>	<b>1</b>	<b>(100%)</b>	<b>(100%)</b>	<b>(100%)</b>
<b>Serious Injury Crashes</b>	<b>18</b>	<b>3:00pm - 5:59pm</b>	<b>Saturday</b>	<b>September</b>
		<b>(28%)</b>	<b>(39%)</b>	<b>(22%)</b>



## House District 33 Distracted Driving-Related Crashes

Interstate Crashes

Non-interstate Crashes

- Fatal
- Serious Injury

- Fatal
- Serious Injury

The blue gradient represents the density of all distracted driving-related crashes.



Available Crash Data - Calendar Year (CY)	CY 2018	CY 2019	CY 2020	CY 2021
Total Crashes	1412	1406	1086	1259
Fatal Crashes	4	10	6	5
Injury Crashes	345	315	254	288
Distracted Driving-Related Fatal Crashes	0	1	1	1
Percent of Distracted Driving-Related Fatal Crashes to Total Fatal Crashes	0%	10%	17%	20%
Distracted Driving-Related Injury Crashes	86	60	68	69
Percent of Distracted Driving-Related Injury Crashes to Total Injury Crashes	25%	19%	27%	24%