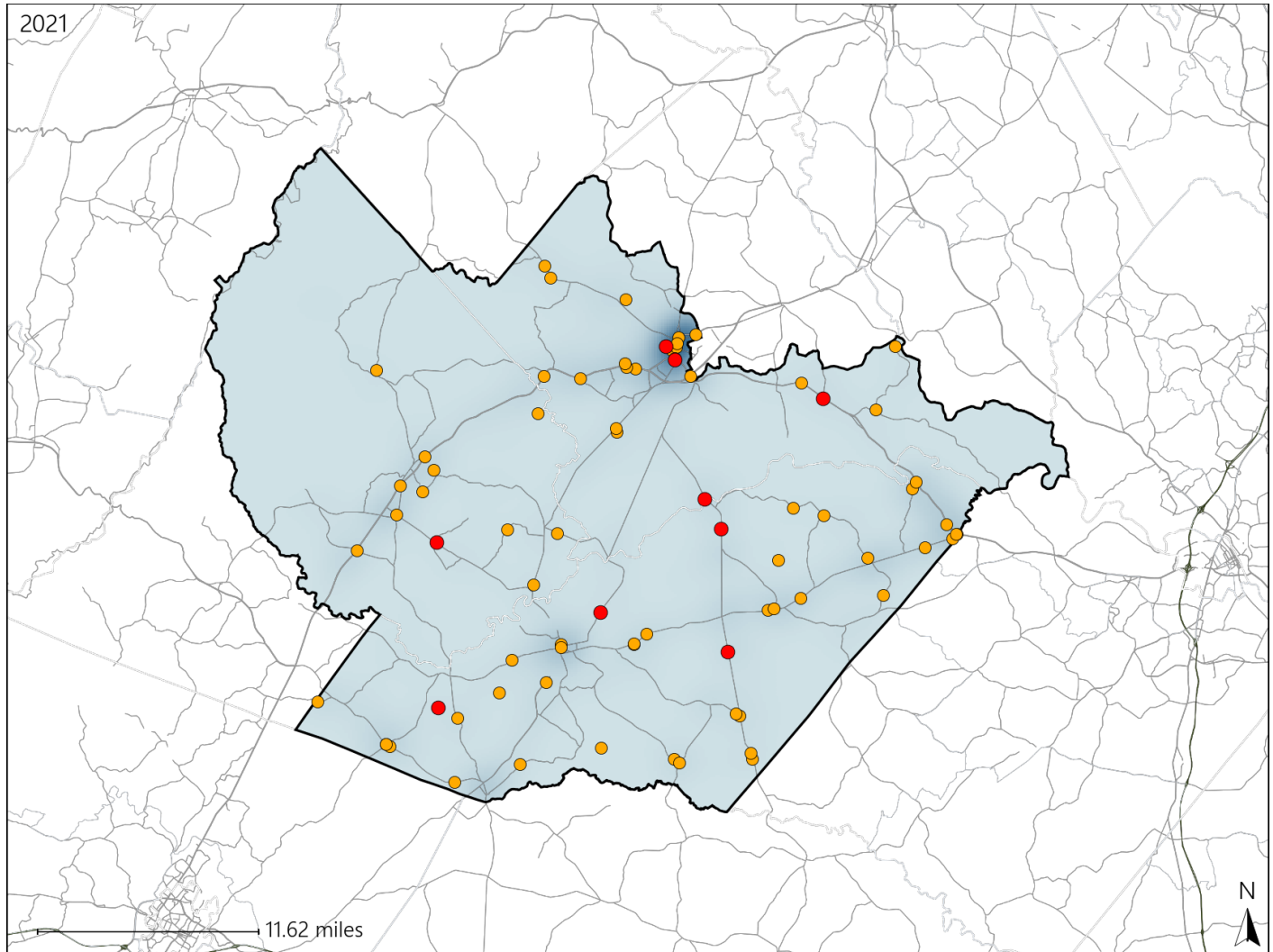


Report of Crashes for January 1st - December 31st, 2021

Virginia House District 30 Crash Statistics

Report Generated April, 2022

	Count	Highest Time Period(s)	Highest Day(s)	Highest Month(s)
Fatal Crashes	9	6:00pm - 8:59pm	Saturday • Wednesday	May
Resulting Fatalities	10	(33%)	(66%)	(22%)
Serious Injury Crashes	68	3:00pm - 5:59pm	Friday • Tuesday	December
		(32%)	(38%)	(13%)



House District 30 Crashes

Interstate Crashes

- Fatal
- Serious Injury

Non-interstate Crashes

- Fatal
- Serious Injury

The blue gradient represents the density of all crashes.



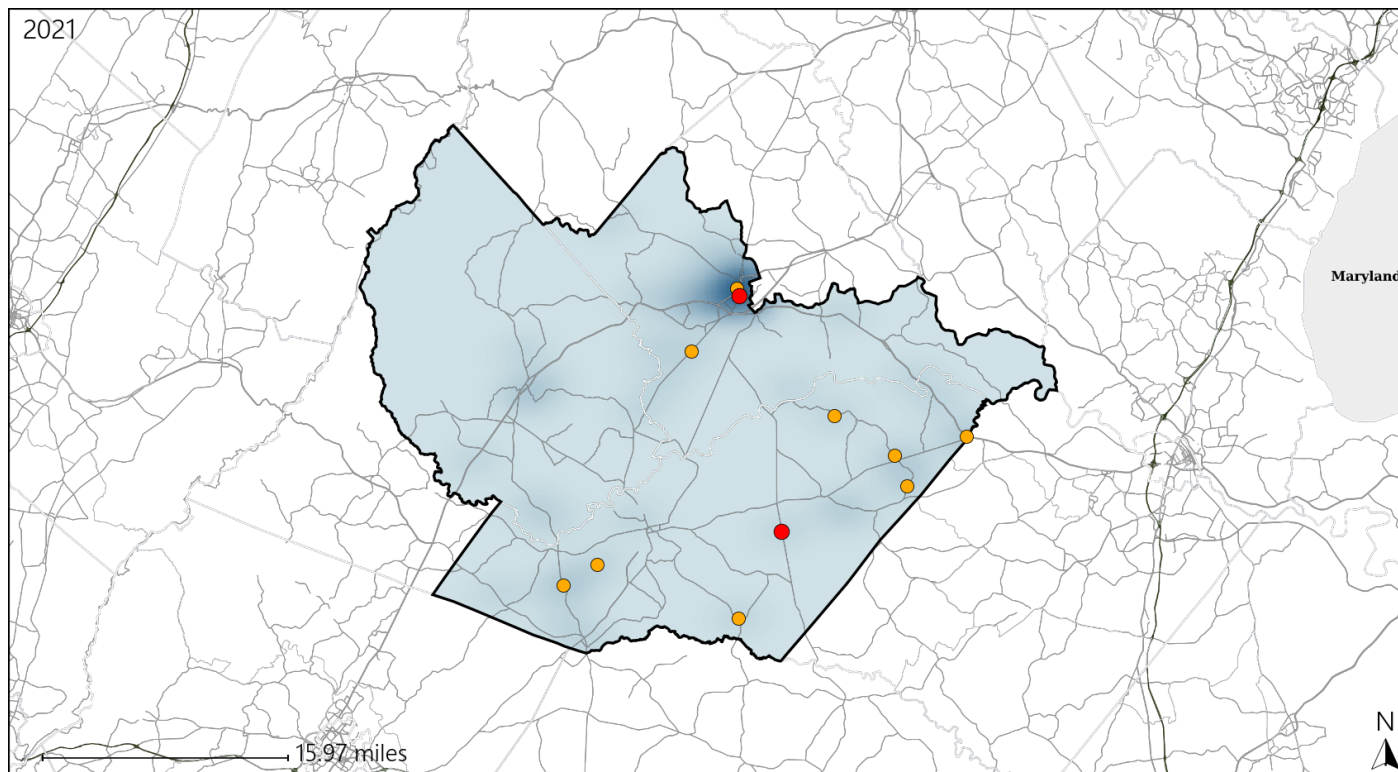
Available Crash Data - Calendar Year (CY)	CY 2018	CY 2019	CY 2020	CY 2021
Total Crashes	1193	1151	1039	1132
Fatal Crashes	15	20	17	9
Injury Crashes	427	465	367	430

Report of Crashes for January 1st - December 31st, 2021

Virginia House District 30 Alcohol Crash Statistics

Report Generated April, 2022

	Count	Highest Time Period(s)	Highest Day(s)	Highest Month(s)
Fatal Crashes	2	6:00pm - 8:59pm	Saturday • Wednesday	May • October
Resulting Fatalities	3	(100%)	(100%)	(100%)
Serious Injury Crashes	10	9:00pm - 11:59pm	Saturday • Tuesday	June
		(50%)	(60%)	(30%)



House District 30 Alcohol-Related Crashes

Interstate Crashes

Non-interstate Crashes

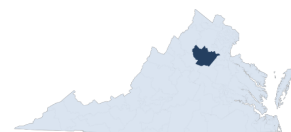
● Fatal

● Fatal

● Serious Injury

● Serious Injury

The blue gradient represents the density of all alcohol-related crashes.



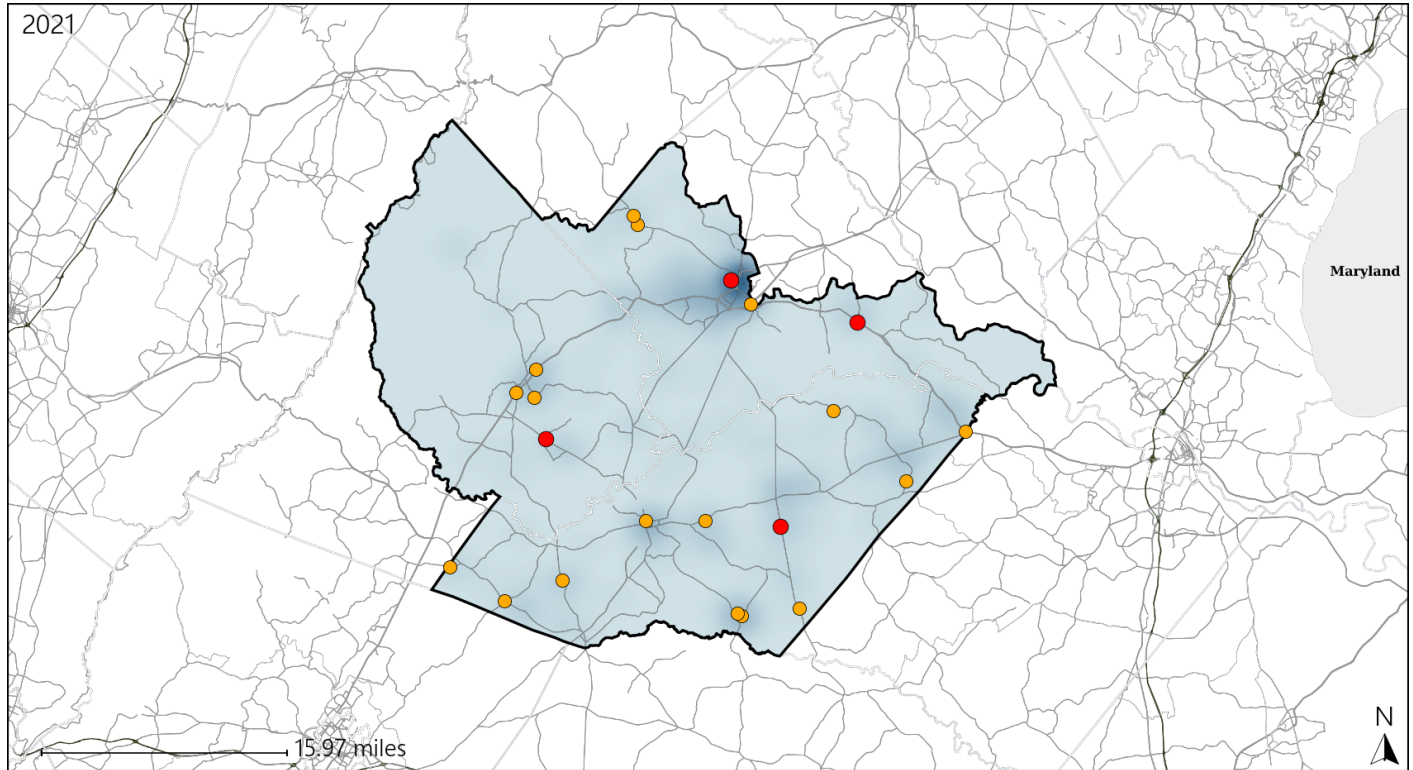
Available Crash Data - Calendar Year (CY)	CY 2018	CY 2019	CY 2020	CY 2021
Total Crashes	1193	1151	1039	1132
Fatal Crashes	15	20	17	9
Injury Crashes	427	465	367	430
Alcohol-Related Fatal Crashes	5	6	6	2
Percent of Alcohol-Related Fatal Crashes to Total Fatal Crashes	33%	30%	35%	22%
Alcohol-Related Injury Crashes	48	38	47	32
Percent of Alcohol-Related Injury Crashes to Total Injury Crashes	11%	8%	13%	7%

Report of Crashes for January 1st - December 31st, 2021

Virginia House District 30 Speed Crash Statistics

Report Generated April, 2022

	Count	Highest Time Period(s)	Highest Day(s)	Highest Month(s)
Fatal Crashes	4	3:00pm - 5:59pm	Saturday	July • March
Resulting Fatalities	5	6:00pm - 8:59pm (50%)	(50%)	(50%)
Serious Injury Crashes	17	3:00pm - 5:59pm (29%)	Friday (24%)	March (29%)



House District 30 Speed-Related Crashes

Interstate Crashes

Non-interstate Crashes

- Fatal
- Serious Injury

- Fatal
- Serious Injury

The blue gradient represents the density of all speed-related crashes.

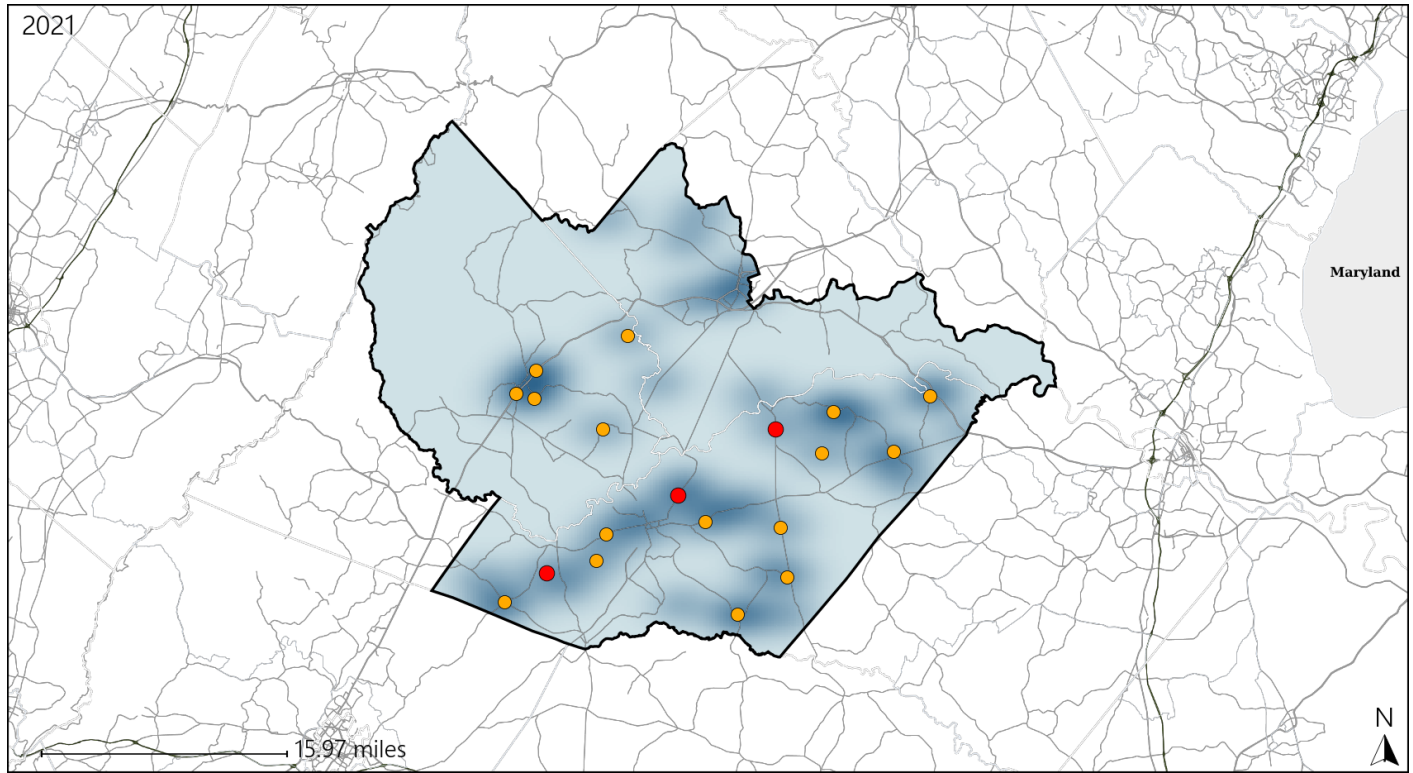


Available Crash Data - Calendar Year (CY)	CY 2018	CY 2019	CY 2020	CY 2021
Total Crashes	1193	1151	1039	1132
Fatal Crashes	15	20	17	9
Injury Crashes	427	465	367	430
Speed-Related Fatal Crashes	5	8	6	4
Percent of Speed-Related Fatal Crashes to Total Fatal Crashes	33%	40%	35%	44%
Speed-Related Injury Crashes	83	84	82	92
Percent of Speed-Related Injury Crashes to Total Injury Crashes	19%	18%	22%	21%

Virginia House District 30 Unrestrained Crash Statistics

Report Generated April, 2022

	Count	Highest Time Period(s)	Highest Day(s)	Highest Month(s)
Fatal Crashes	3	9:00am - 11:59am	Wednesday	April • December
Unrestrained Fatalities	3	9:00pm - 11:59pm (66%)	(67%)	(66%)
Serious Injury Crashes	16	3:00pm - 5:59pm 6:00pm - 8:59pm (38%)	Tuesday (25%)	March (19%)



House District 30 Unrestrained-Related Crashes

Interstate Crashes

Non-interstate Crashes

● Fatal

● Fatal

⊕ Serious Injury

⊕ Serious Injury

The blue gradient represents the density of all unrestrained-related crashes.

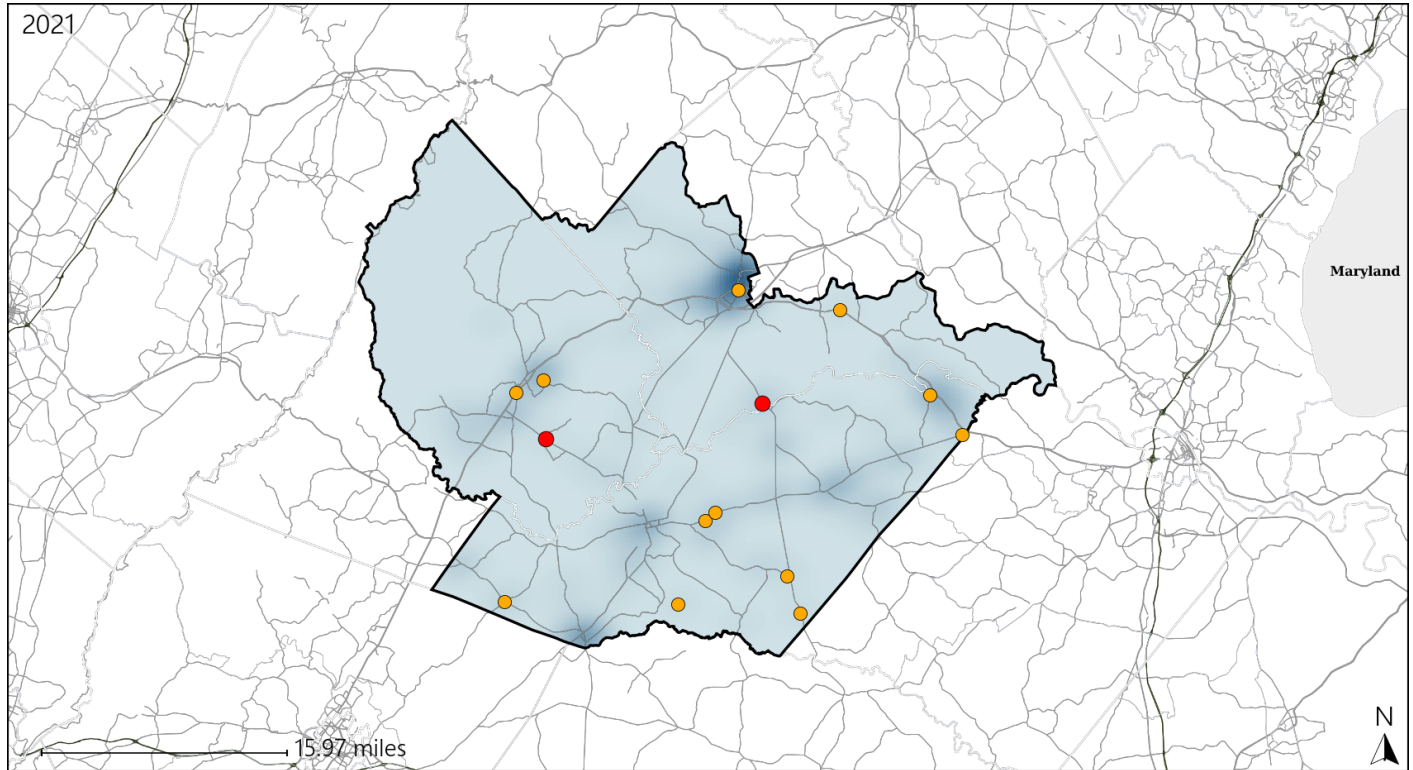


Available Crash Data - Calendar Year (CY)	CY 2018	CY 2019	CY 2020	CY 2021
Total Crashes	1193	1151	1039	1132
Fatalities	16	20	19	10
Injuries	689	741	572	703
Unrestrained Fatalities	4	6	13	3
Percent of Unrestrained Fatalities to Total Fatalities	25%	30%	68%	30%
Unrestrained Injuries	54	52	60	45
Percent of Unrestrained Injuries to Total Injuries	8%	7%	10%	6%

Virginia House District 30 Distracted Driving Crash Statistics

Report Generated April, 2022

	Count	Highest Time Period(s)	Highest Day(s)	Highest Month(s)
Fatal Crashes	2	6:00pm - 8:59pm	Saturday • Sunday	January • September
Resulting Fatalities	2	Noon - 2:59pm (100%)	(100%)	(100%)
Serious Injury Crashes	12	Noon - 2:59pm (33%)	Sunday (25%)	August • September (50%)



House District 30 Distracted Driving-Related Crashes

Interstate Crashes

Non-interstate Crashes

- Fatal
- Serious Injury

- Fatal
- Serious Injury

The blue gradient represents the density of all distracted driving-related crashes.



Available Crash Data - Calendar Year (CY)	CY 2018	CY 2019	CY 2020	CY 2021
Total Crashes	1193	1151	1039	1132
Fatal Crashes	15	20	17	9
Injury Crashes	427	465	367	430
Distracted Driving-Related Fatal Crashes	0	2	3	2
Percent of Distracted Driving-Related Fatal Crashes to Total Fatal Crashes	0%	10%	18%	22%
Distracted Driving-Related Injury Crashes	74	85	60	66
Percent of Distracted Driving-Related Injury Crashes to Total Injury Crashes	17%	18%	16%	15%