

Virginia House District 27 Crash Statistics

Report Generated April, 2022

	Count	Highest Time Period(s)	Highest Day(s)	Highest Month(s)
Fatal Crashes	8	6:00pm - 8:59pm	Saturday	July
Resulting Fatalities	8	(38%)	(38%)	(25%)
Serious Injury Crashes	33	9:00pm - 11:59pm	Tuesday	December
		(21%)	(36%)	(18%)



House District 27 Crashes

Interstate Crashes

- Fatal
- Serious Injury

Non-interstate Crashes

- Fatal
- Serious Injury

The blue gradient represents the density of all crashes.

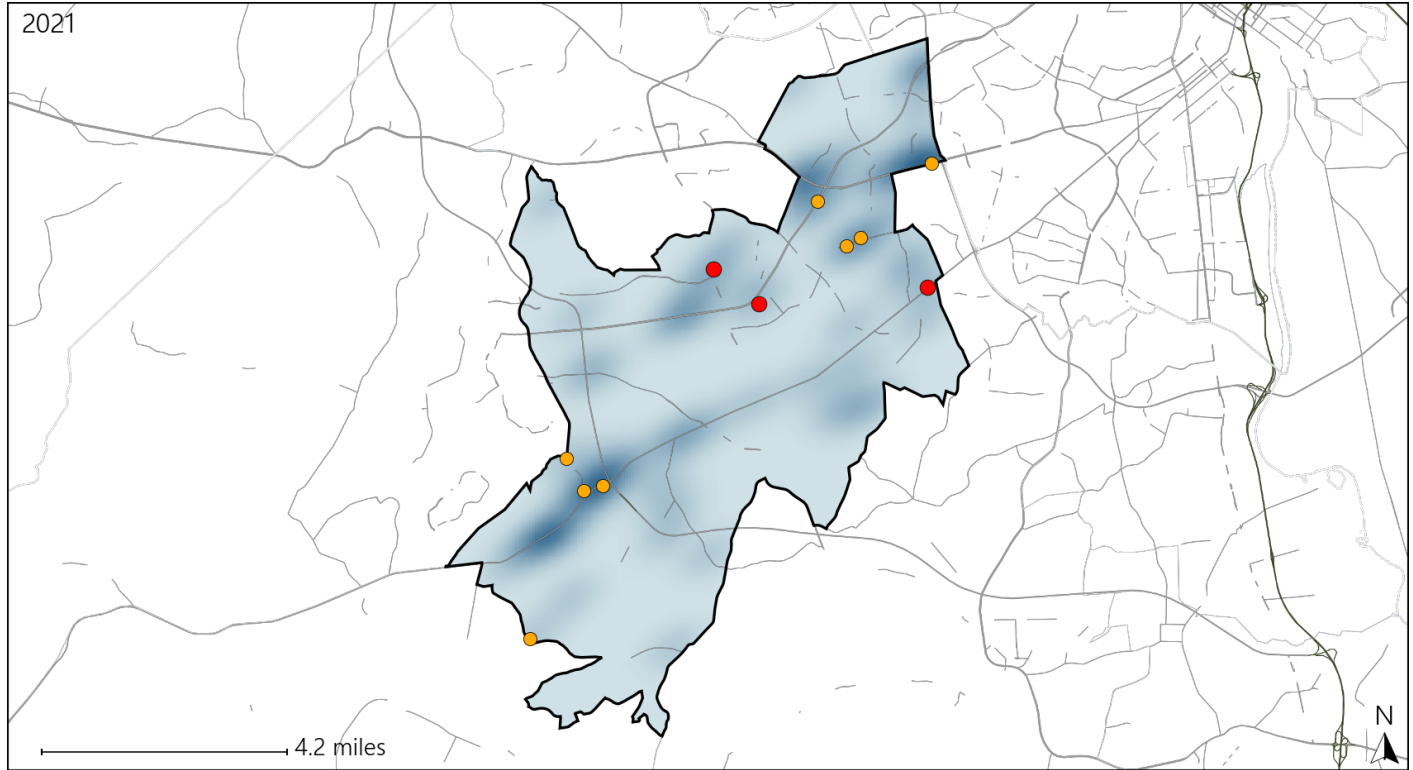


Available Crash Data - Calendar Year (CY)	CY 2018	CY 2019	CY 2020	CY 2021
Total Crashes	1586	1446	1110	1253
Fatal Crashes	6	4	9	8
Injury Crashes	418	380	250	302

Virginia House District 27 Alcohol Crash Statistics

Report Generated April, 2022

	Count	Highest Time Period(s)	Highest Day(s)	Highest Month(s)
Fatal Crashes	3	6:00pm - 8:59pm	Saturday • Sunday	December • July
Resulting Fatalities	3	(67%)	(66%)	(66%)
Serious Injury Crashes	8	Midnight - 2:59am	Saturday	December • June
		(38%)	(38%)	(50%)



House District 27 Alcohol-Related Crashes

Interstate Crashes

Non-interstate Crashes

- Fatal
- Serious Injury

- Fatal
- Serious Injury

The blue gradient represents the density of all alcohol-related crashes.



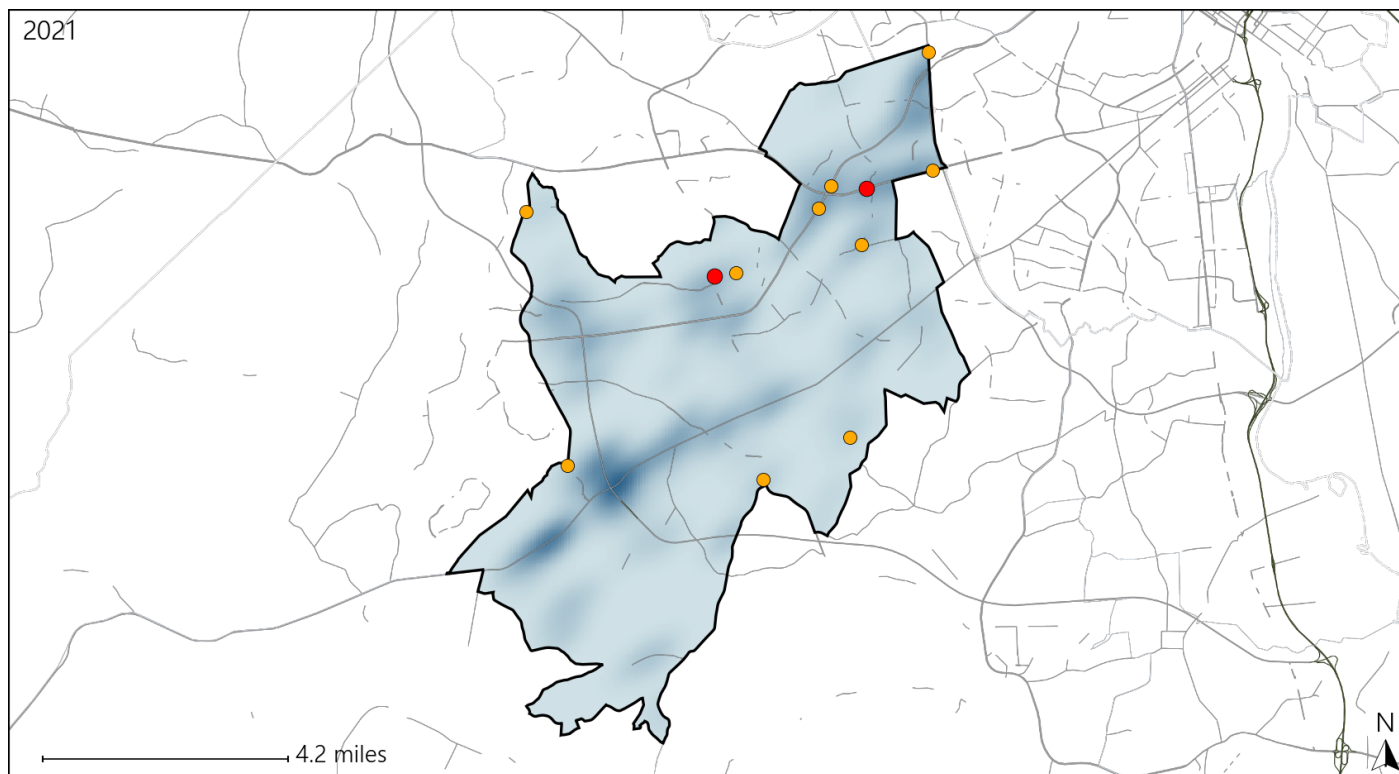
Available Crash Data - Calendar Year (CY)	CY 2018	CY 2019	CY 2020	CY 2021
Total Crashes	1586	1446	1110	1253
Fatal Crashes	6	4	9	8
Injury Crashes	418	380	250	302
Alcohol-Related Fatal Crashes	3	1	3	3
Percent of Alcohol-Related Fatal Crashes to Total Fatal Crashes	50%	25%	33%	38%
Alcohol-Related Injury Crashes	26	23	23	21
Percent of Alcohol-Related Injury Crashes to Total Injury Crashes	6%	6%	9%	7%

Report of Crashes for January 1st - December 31st, 2021

Virginia House District 27 Speed Crash Statistics

Report Generated April, 2022

	Count	Highest Time Period(s)	Highest Day(s)	Highest Month(s)
Fatal Crashes	2	6:00pm - 8:59pm	Saturday • Tuesday	March • May
Resulting Fatalities	2	(100%)	(100%)	(100%)
Serious Injury Crashes	10	6:00pm - 8:59pm 9:00pm - 11:59pm	Tuesday	December
		(60%)	(40%)	(30%)



House District 27 Speed-Related Crashes

Interstate Crashes

Non-interstate Crashes

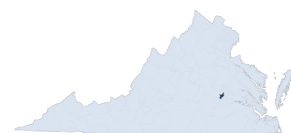
● Fatal

● Fatal

⊕ Serious Injury

⊕ Serious Injury

The blue gradient represents the density of all speed-related crashes.

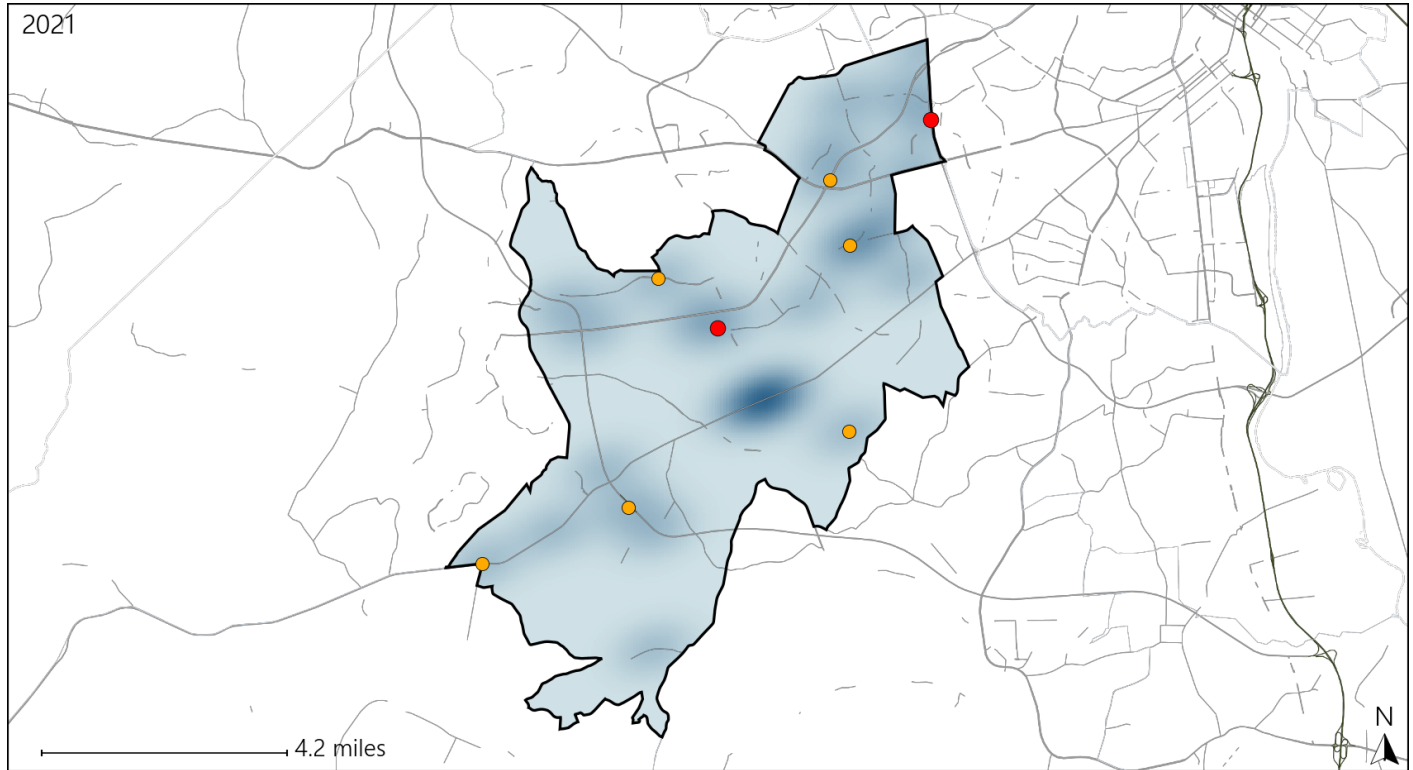


Available Crash Data - Calendar Year (CY)	CY 2018	CY 2019	CY 2020	CY 2021
Total Crashes	1586	1446	1110	1253
Fatal Crashes	6	4	9	8
Injury Crashes	418	380	250	302
Speed-Related Fatal Crashes	2	1	5	2
Percent of Speed-Related Fatal Crashes to Total Fatal Crashes	33%	25%	56%	25%
Speed-Related Injury Crashes	77	68	51	75
Percent of Speed-Related Injury Crashes to Total Injury Crashes	18%	18%	20%	25%

Virginia House District 27 Unrestrained Crash Statistics

Report Generated April, 2022

	Count	Highest Time Period(s)	Highest Day(s)	Highest Month(s)
Fatal Crashes	2	3:00am - 5:59am	Friday • Thursday	August • October
Unrestrained Fatalities	2	9:00pm - 11:59pm (100%)	(100%)	(100%)
Serious Injury Crashes	6	9:00pm - 11:59pm (33%)	Friday • Tuesday (66%)	April (33%)



House District 27 Unrestrained-Related Crashes

Interstate Crashes

Non-interstate Crashes

- Fatal
- Serious Injury

- Fatal
- Serious Injury

The blue gradient represents the density of all unrestrained-related crashes.

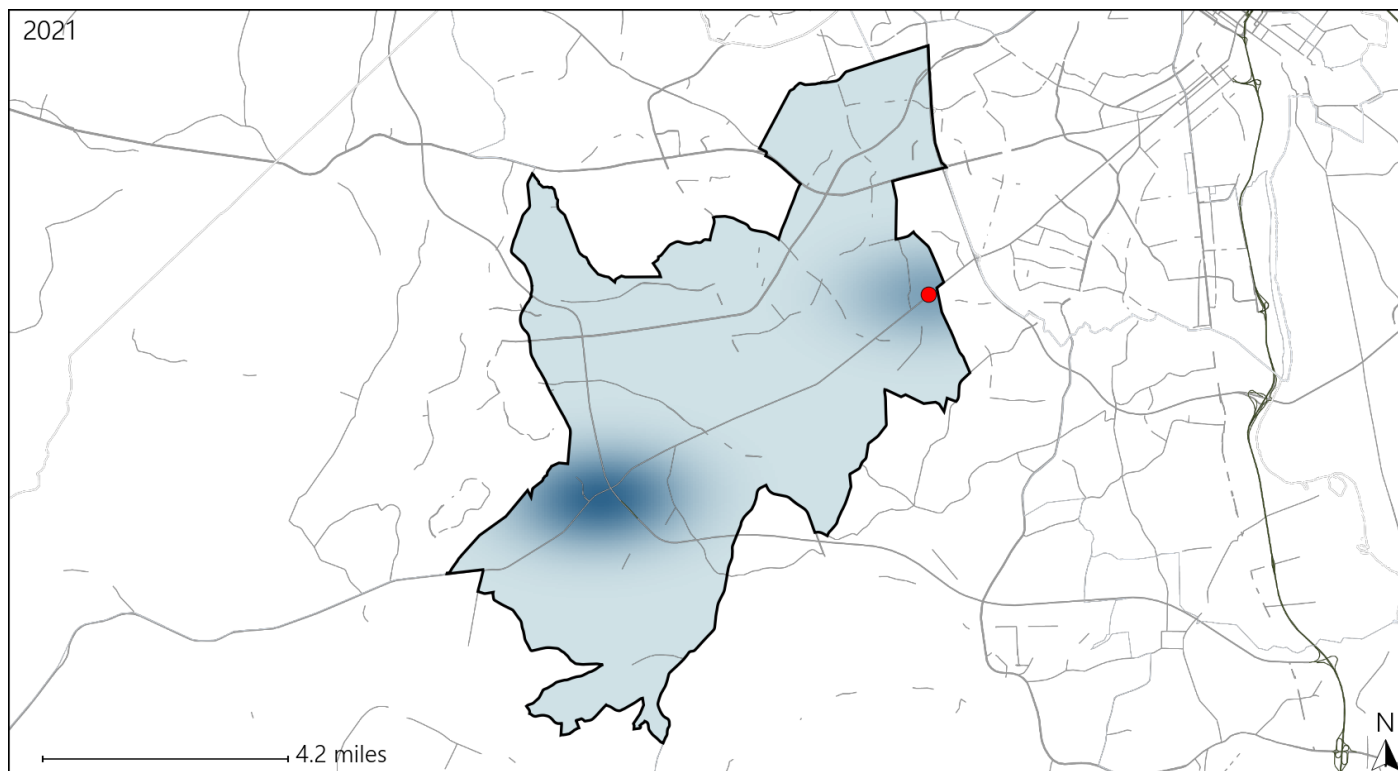


Available Crash Data - Calendar Year (CY)	CY 2018	CY 2019	CY 2020	CY 2021
Total Crashes	1586	1446	1110	1253
Fatalities	6	4	10	8
Injuries	699	680	435	459
Unrestrained Fatalities	1	0	4	2
Percent of Unrestrained Fatalities to Total Fatalities	17%	0%	40%	25%
Unrestrained Injuries	30	32	17	26
Percent of Unrestrained Injuries to Total Injuries	4%	5%	4%	6%

Virginia House District 27 Bicycle Crash Statistics

Report Generated April, 2022



	Count	Highest Time Period(s)	Highest Day(s)	Highest Month(s)
Fatal Crashes	1	3:00am - 5:59am	Sunday	July
Bicycle Fatalities	1	(100%)	(100%)	(100%)
Serious Injury Crashes	0	-	-	-



House District 27 Bicycle-Related Crashes

Interstate Crashes

Non-interstate Crashes

 Fatal Fatal Serious Injury Serious Injury

The blue gradient represents the density of all bicycle-related crashes.

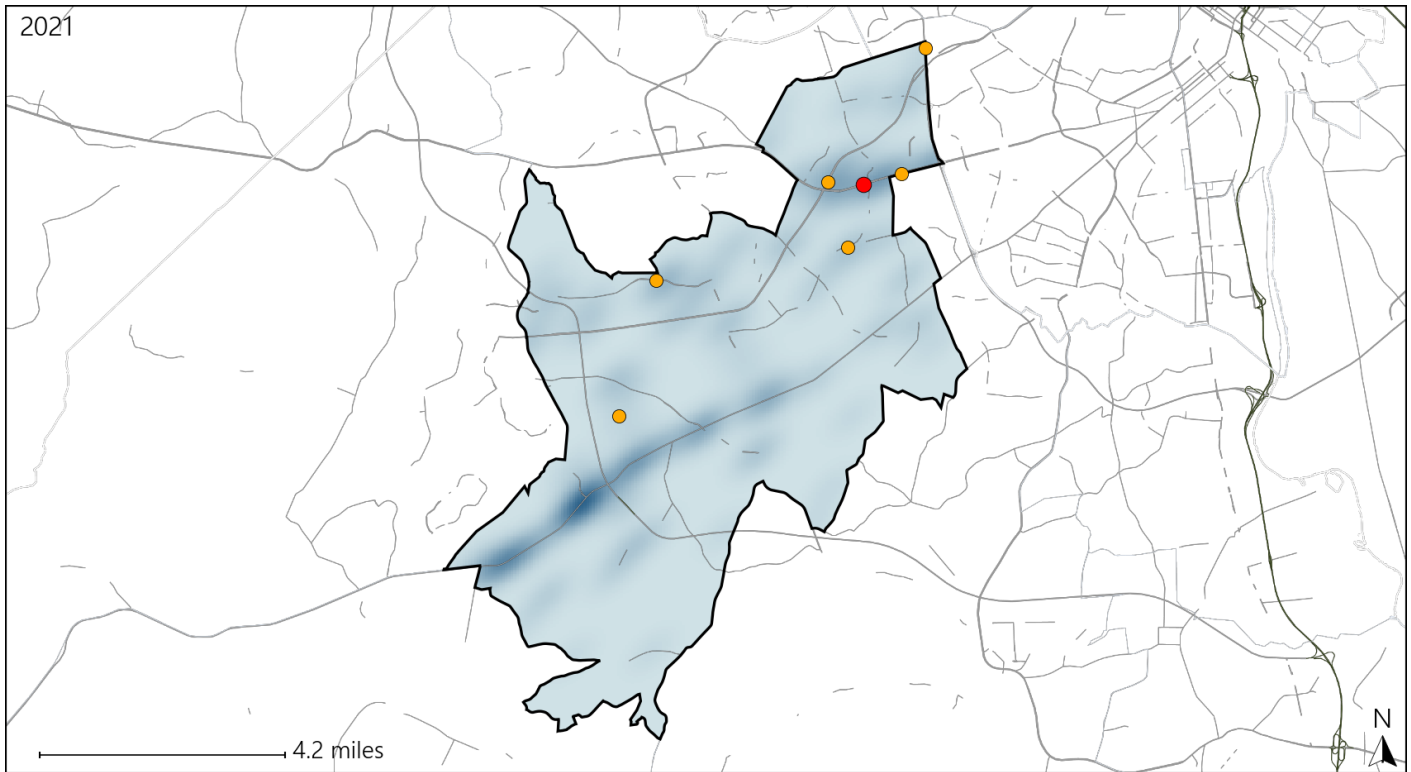


Available Crash Data - Calendar Year (CY)	CY 2018	CY 2019	CY 2020	CY 2021
Total Crashes	1586	1446	1110	1253
Fatal Crashes	6	4	9	8
Injury Crashes	418	380	250	302
Bicycle-Related Fatal Crashes	0	0	0	1
Percent of Bicycle-Related Fatal Crashes to Total Fatal Crashes	0%	0%	0%	13%
Bicycle-Related Injury Crashes	2	2	1	1
Percent of Bicycle-Related Injury Crashes to Total Injury Crashes	0%	1%	0%	0%

Virginia House District 27 Distracted Driving Crash Statistics

Report Generated April, 2022

	Count	Highest Time Period(s)	Highest Day(s)	Highest Month(s)
Fatal Crashes	1	6:00pm - 8:59pm	Saturday	May
Resulting Fatalities	1	(100%)	(100%)	(100%)
Serious Injury Crashes	6	9:00am - 11:59am 9:00pm - 11:59pm	Saturday • Tuesday	April
		(66%)	(66%)	(50%)



House District 27 Distracted Driving-Related Crashes

Interstate Crashes

Non-interstate Crashes

● Fatal

● Fatal

⊕ Serious Injury

⊕ Serious Injury

The blue gradient represents the density of all distracted driving-related crashes.



Available Crash Data - Calendar Year (CY)	CY 2018	CY 2019	CY 2020	CY 2021
Total Crashes	1586	1446	1110	1253
Fatal Crashes	6	4	9	8
Injury Crashes	418	380	250	302
Distracted Driving-Related Fatal Crashes	1	0	1	1
Percent of Distracted Driving-Related Fatal Crashes to Total Fatal Crashes	17%	0%	11%	13%
Distracted Driving-Related Injury Crashes	71	62	45	56
Percent of Distracted Driving-Related Injury Crashes to Total Injury Crashes	17%	16%	18%	19%