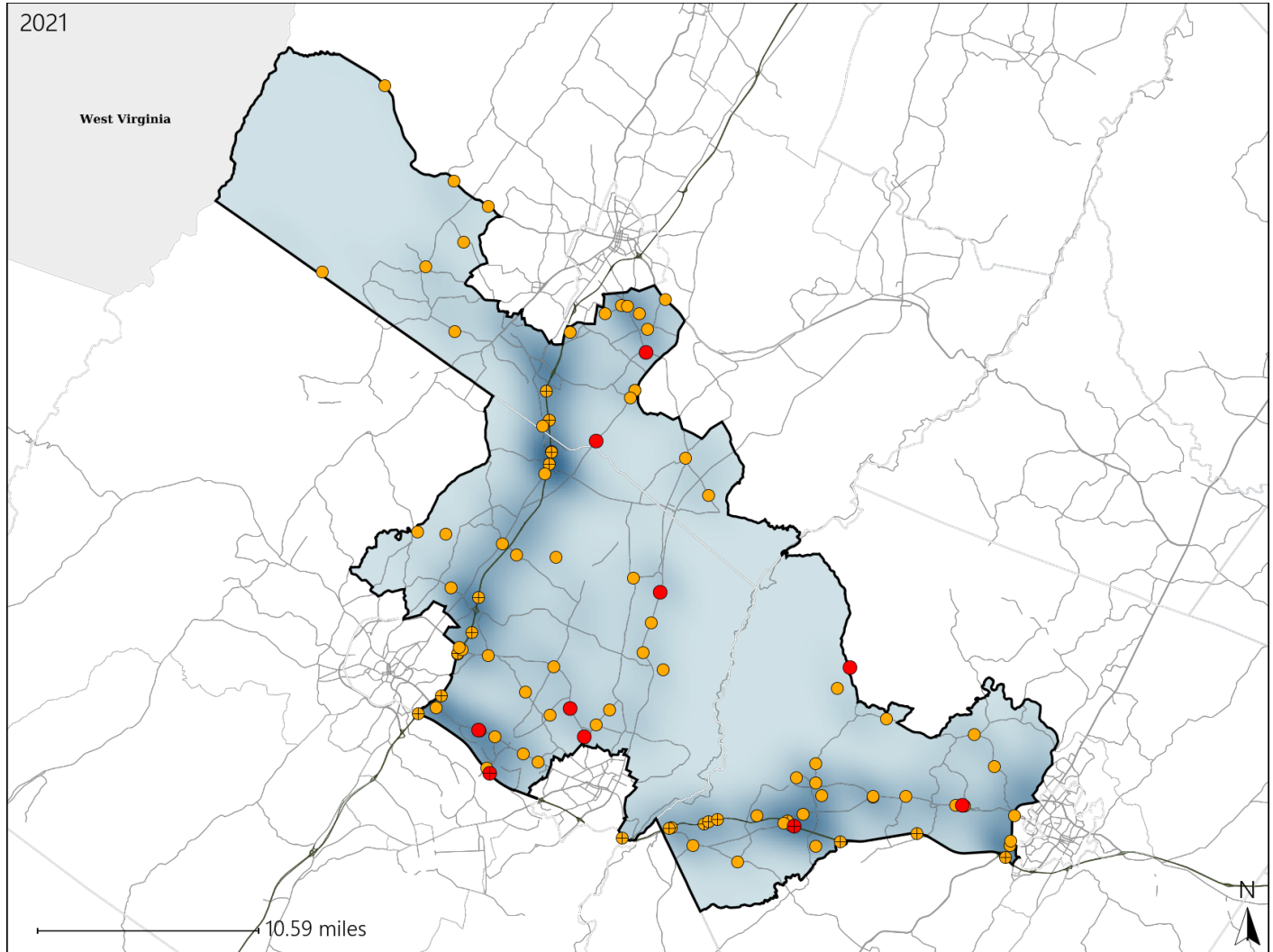


Virginia House District 25 Crash Statistics

Report Generated April, 2022

	Count	Highest Time Period(s)	Highest Day(s)	Highest Month(s)
Fatal Crashes	10	3:00pm - 5:59pm	Saturday	January • July
Resulting Fatalities	11	6:00pm - 8:59pm (40%)	(30%)	(40%)
Serious Injury Crashes	90	3:00pm - 5:59pm (20%)	Friday • Monday (36%)	August (16%)



House District 25 Crashes

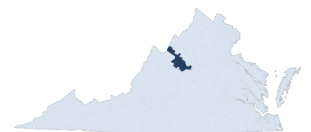
Interstate Crashes

- Fatal
- Serious Injury

Non-interstate Crashes

- Fatal
- Serious Injury

The blue gradient represents the density of all crashes.



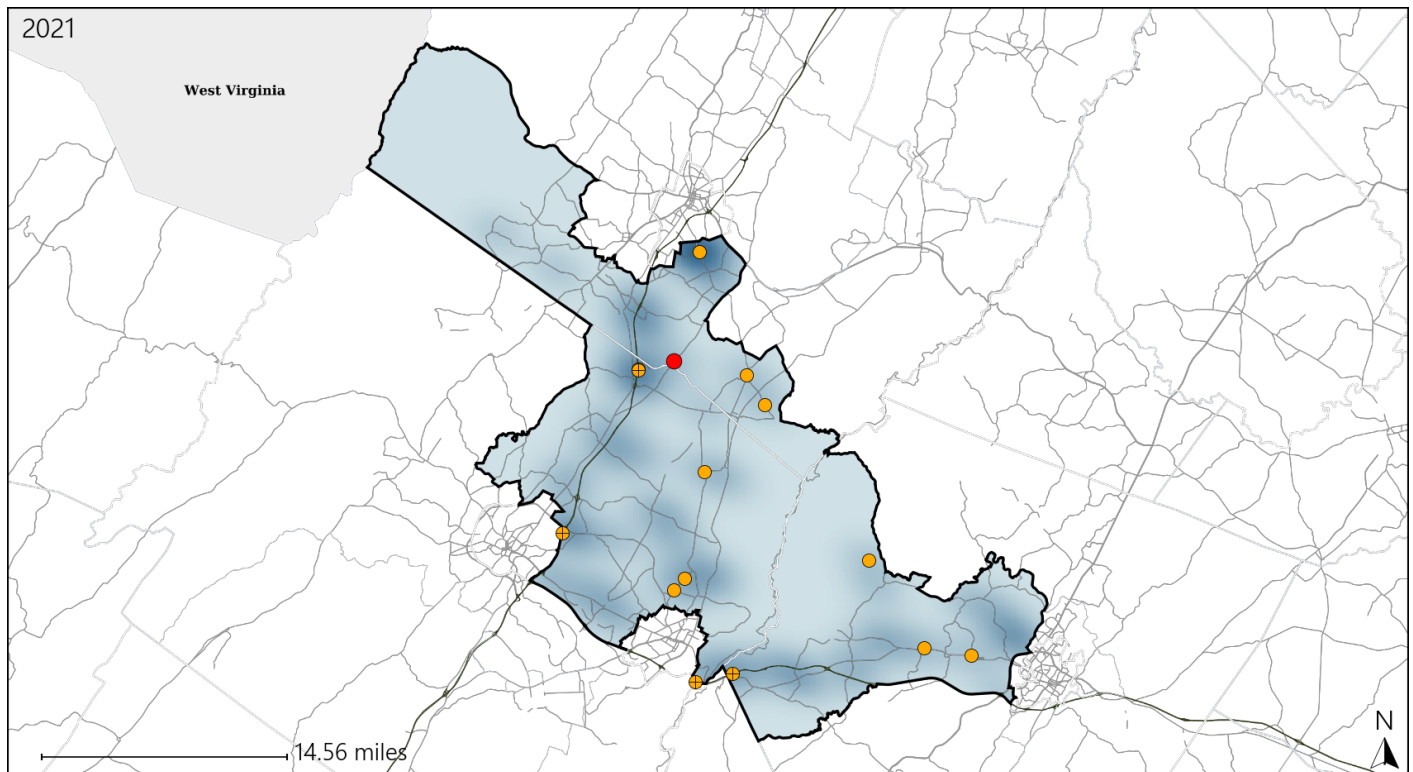
Available Crash Data - Calendar Year (CY)	CY 2018	CY 2019	CY 2020	CY 2021
Total Crashes	1415	1361	1126	1203
Fatal Crashes	8	12	7	10
Injury Crashes	394	439	387	413

Report of Crashes for January 1st - December 31st, 2021

Virginia House District 25 Alcohol Crash Statistics

Report Generated April, 2022

	Count	Highest Time Period(s)	Highest Day(s)	Highest Month(s)
Fatal Crashes	1	3:00pm - 5:59pm	Saturday	July
Resulting Fatalities	1	(100%)	(100%)	(100%)
Serious Injury Crashes	14	6:00pm - 8:59pm 9:00pm - 11:59pm	Friday	December • September
		(42%)	(36%)	(42%)



House District 25 Alcohol-Related Crashes

Interstate Crashes

Non-interstate Crashes

- Fatal
- ⊕ Serious Injury

- Fatal
- Serious Injury

The blue gradient represents the density of all alcohol-related crashes.



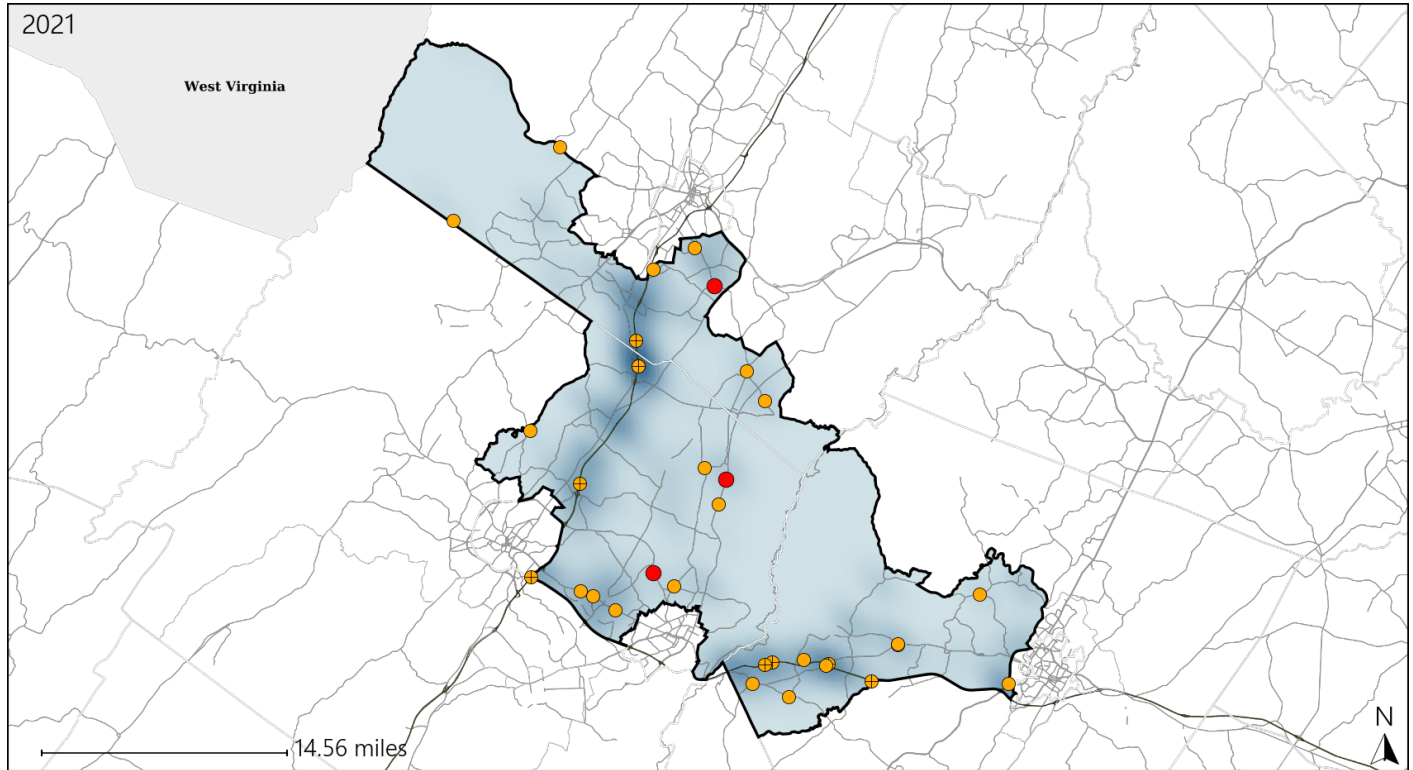
Available Crash Data - Calendar Year (CY)	CY 2018	CY 2019	CY 2020	CY 2021
Total Crashes	1415	1361	1126	1203
Fatal Crashes	8	12	7	10
Injury Crashes	394	439	387	413
Alcohol-Related Fatal Crashes	4	3	3	1
Percent of Alcohol-Related Fatal Crashes to Total Fatal Crashes	50%	25%	43%	10%
Alcohol-Related Injury Crashes	31	39	42	34
Percent of Alcohol-Related Injury Crashes to Total Injury Crashes	8%	9%	11%	8%

Report of Crashes for January 1st - December 31st, 2021

Virginia House District 25 Speed Crash Statistics

Report Generated April, 2022

	Count	Highest Time Period(s)	Highest Day(s)	Highest Month(s)
Fatal Crashes	3	6:00am - 8:59am	Sunday • Thursday	July • March
Resulting Fatalities	4	6:00pm - 8:59pm (66%)	(66%)	(66%)
Serious Injury Crashes	29	3:00pm - 5:59pm (28%)	Friday • Sunday (42%)	August (21%)



House District 25 Speed-Related Crashes

Interstate Crashes

Non-interstate Crashes

- Fatal
- Serious Injury

- Fatal
- Serious Injury

The blue gradient represents the density of all speed-related crashes.

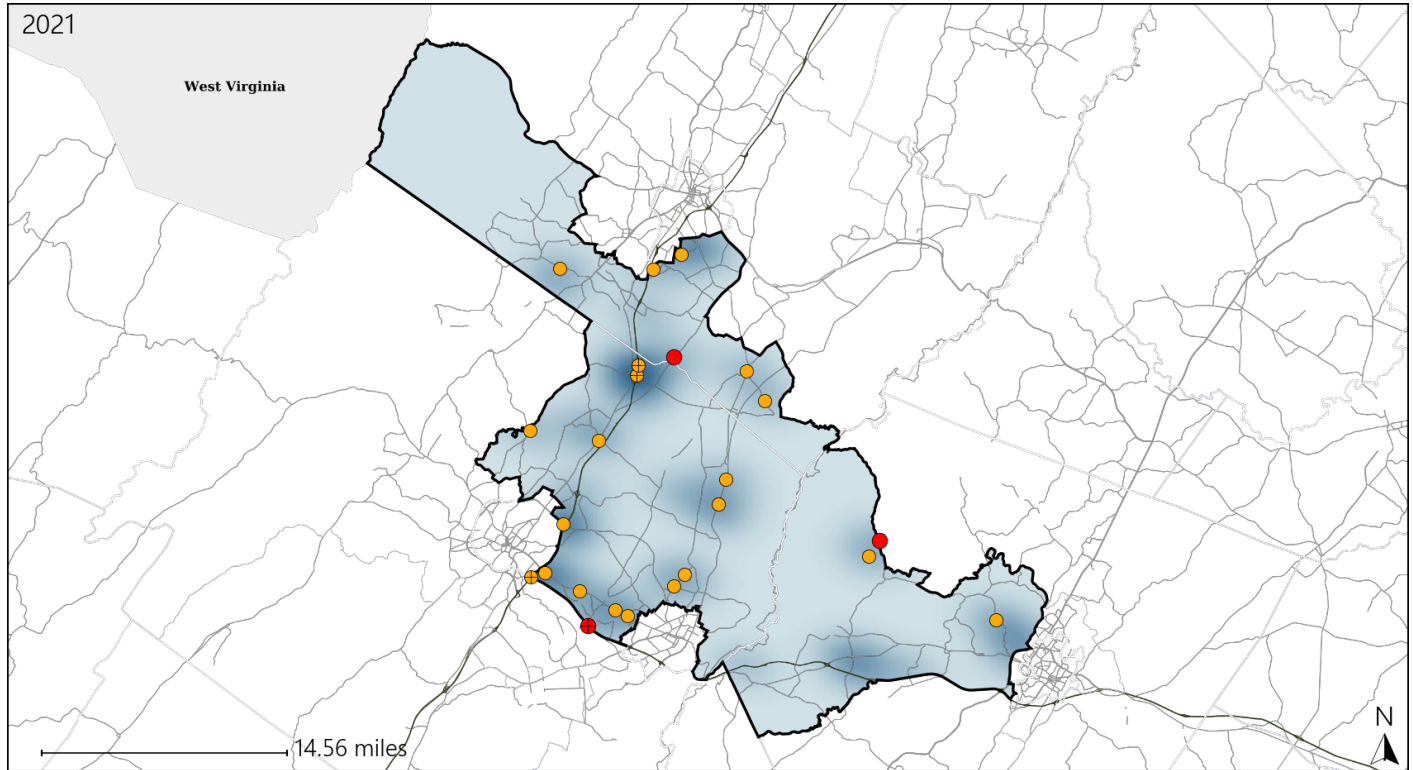


Available Crash Data - Calendar Year (CY)	CY 2018	CY 2019	CY 2020	CY 2021
Total Crashes	1415	1361	1126	1203
Fatal Crashes	8	12	7	10
Injury Crashes	394	439	387	413
Speed-Related Fatal Crashes	3	6	1	3
Percent of Speed-Related Fatal Crashes to Total Fatal Crashes	38%	50%	14%	30%
Speed-Related Injury Crashes	118	100	105	109
Percent of Speed-Related Injury Crashes to Total Injury Crashes	30%	23%	27%	26%

Virginia House District 25 Unrestrained Crash Statistics

Report Generated April, 2022

	Count	Highest Time Period(s)	Highest Day(s)	Highest Month(s)
Fatal Crashes	3	3:00pm - 5:59pm	Saturday	January • July
Unrestrained Fatalities	3	9:00am - 11:59am (66%)	(67%)	(66%)
Serious Injury Crashes	21	6:00pm - 8:59pm (29%)	Monday (24%)	May (24%)



House District 25 Unrestrained-Related Crashes

Interstate Crashes

Non-interstate Crashes

- Fatal
- Serious Injury

- Fatal
- Serious Injury

The blue gradient represents the density of all unrestrained-related crashes.



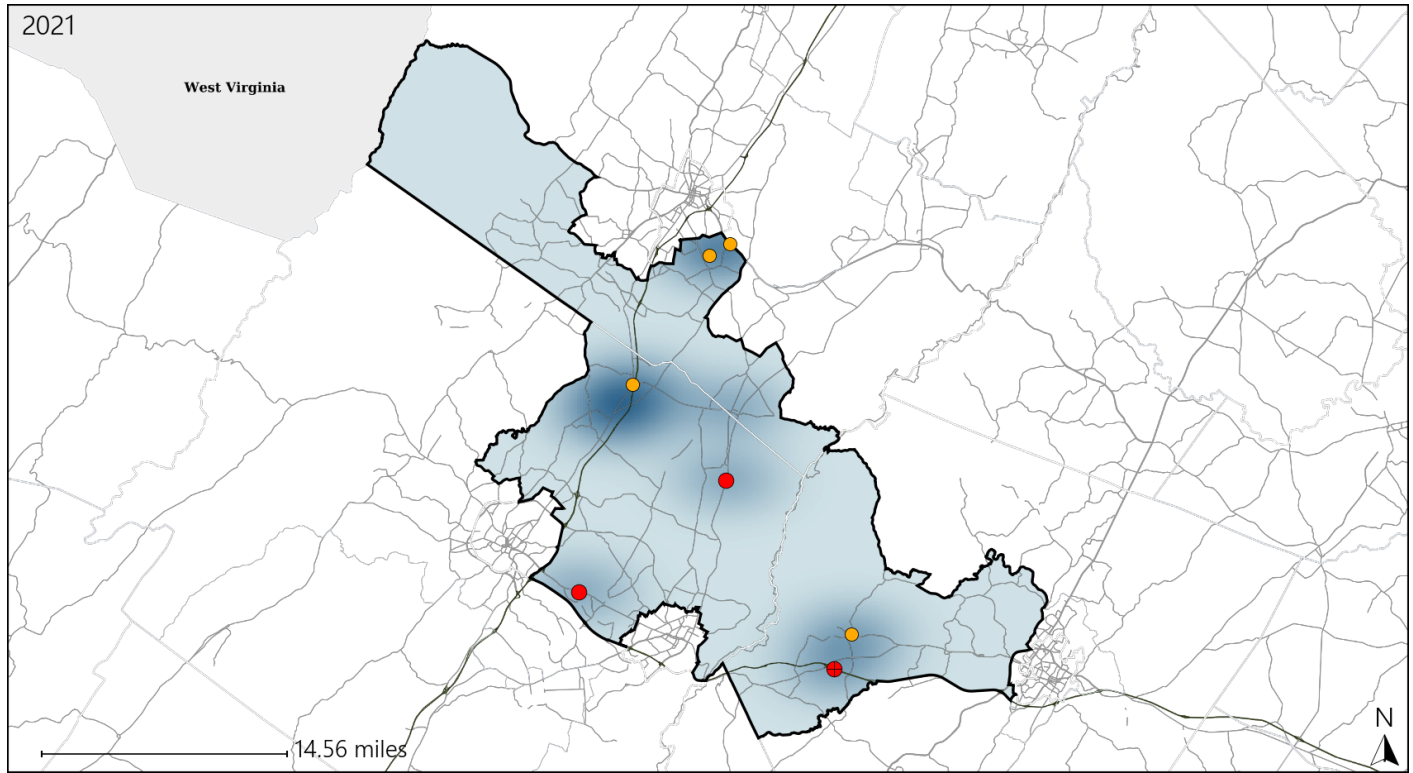
Available Crash Data - Calendar Year (CY)	CY 2018	CY 2019	CY 2020	CY 2021
Total Crashes	1415	1361	1126	1203
Fatalities	9	13	9	11
Injuries	569	617	562	625
Unrestrained Fatalities	5	4	3	3
Percent of Unrestrained Fatalities to Total Fatalities	56%	31%	33%	27%
Unrestrained Injuries	60	42	41	47
Percent of Unrestrained Injuries to Total Injuries	11%	7%	7%	8%

Report of Crashes for January 1st - December 31st, 2021

Virginia House District 25 Pedestrian Crash Statistics

Report Generated April, 2022

	Count	Highest Time Period(s)	Highest Day(s)	Highest Month(s)
Fatal Crashes	3	3:00am - 5:59am	Saturday • Thursday	January • July
Pedestrian Fatalities	3	6:00am - 8:59am (66%)	(66%)	(66%)
Serious Injury Crashes	4	3:00pm - 5:59pm	Wednesday	October
		6:00am - 8:59am (50%)	(50%)	(50%)



House District 25 Pedestrian-Related Crashes

Interstate Crashes

Non-interstate Crashes

● Fatal

● Fatal

⊕ Serious Injury

⊕ Serious Injury

The blue gradient represents the density of all pedestrian-related crashes.



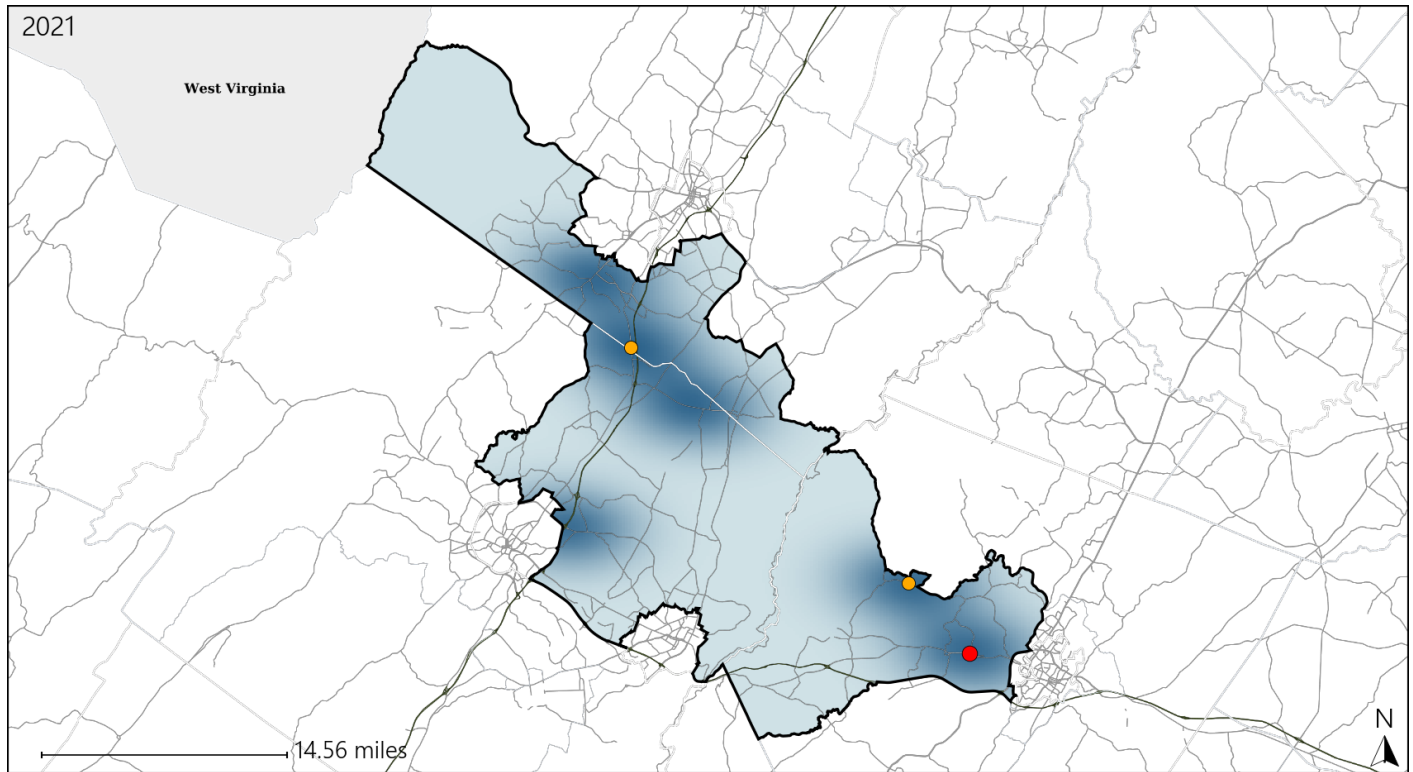
Available Crash Data - Calendar Year (CY)	CY 2018	CY 2019	CY 2020	CY 2021
Total Crashes	1415	1361	1126	1203
Fatal Crashes	8	12	7	10
Injury Crashes	394	439	387	413
Pedestrian-Related Fatal Crashes	1	1	0	3
Percent of Pedestrian-Related Fatal Crashes to Total Fatal Crashes	13%	8%	0%	30%
Pedestrian-Related Injury Crashes	9	3	5	7
Percent of Pedestrian-Related Injury Crashes to Total Injury Crashes	2%	1%	1%	2%

Report of Crashes for January 1st - December 31st, 2021

Virginia House District 25 Bicycle Crash Statistics

Report Generated April, 2022

	Count	Highest Time Period(s)	Highest Day(s)	Highest Month(s)
Fatal Crashes	1	Noon - 2:59pm	Monday	April
Bicycle Fatalities	1	(100%)	(100%)	(100%)
Serious Injury Crashes	2	6:00pm - 8:59pm Noon - 2:59pm	Monday * Sunday	April * September
		(100%)	(100%)	(100%)



House District 25 Bicycle-Related Crashes

Interstate Crashes

Non-interstate Crashes

- Fatal
- Serious Injury

- Fatal
- Serious Injury

The blue gradient represents the density of all bicycle-related crashes.

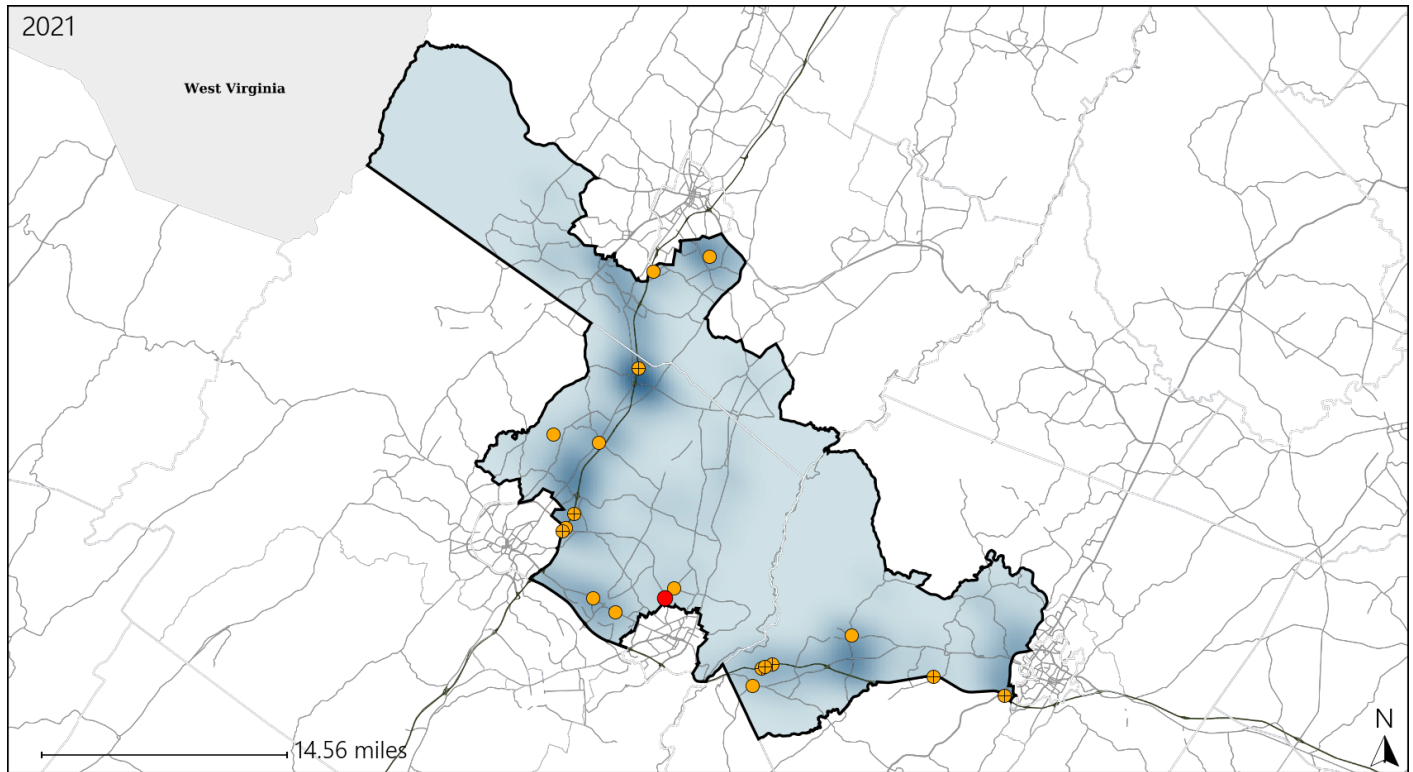


Available Crash Data - Calendar Year (CY)	CY 2018	CY 2019	CY 2020	CY 2021
Total Crashes	1415	1361	1126	1203
Fatal Crashes	8	12	7	10
Injury Crashes	394	439	387	413
Bicycle-Related Fatal Crashes	0	0	0	1
Percent of Bicycle-Related Fatal Crashes to Total Fatal Crashes	0%	0%	0%	10%
Bicycle-Related Injury Crashes	1	5	9	5
Percent of Bicycle-Related Injury Crashes to Total Injury Crashes	0%	1%	2%	1%

Virginia House District 25 Distracted Driving Crash Statistics

Report Generated April, 2022

	Count	Highest Time Period(s)	Highest Day(s)	Highest Month(s)
Fatal Crashes	1	3:00pm - 5:59pm	Sunday	June
Resulting Fatalities	1	(100%)	(100%)	(100%)
Serious Injury Crashes	18	6:00am - 8:59am 9:00pm - 11:59pm	Friday • Monday	July
		(44%)	(44%)	(28%)



House District 25 Distracted Driving-Related Crashes

Interstate Crashes

Non-interstate Crashes

● Fatal

● Fatal

⊕ Serious Injury

⊕ Serious Injury

The blue gradient represents the density of all distracted driving-related crashes.



Available Crash Data - Calendar Year (CY)	CY 2018	CY 2019	CY 2020	CY 2021
Total Crashes	1415	1361	1126	1203
Fatal Crashes	8	12	7	10
Injury Crashes	394	439	387	413
Distracted Driving-Related Fatal Crashes	0	2	0	1
Percent of Distracted Driving-Related Fatal Crashes to Total Fatal Crashes	0%	17%	0%	10%
Distracted Driving-Related Injury Crashes	70	88	71	67
Percent of Distracted Driving-Related Injury Crashes to Total Injury Crashes	18%	20%	18%	16%