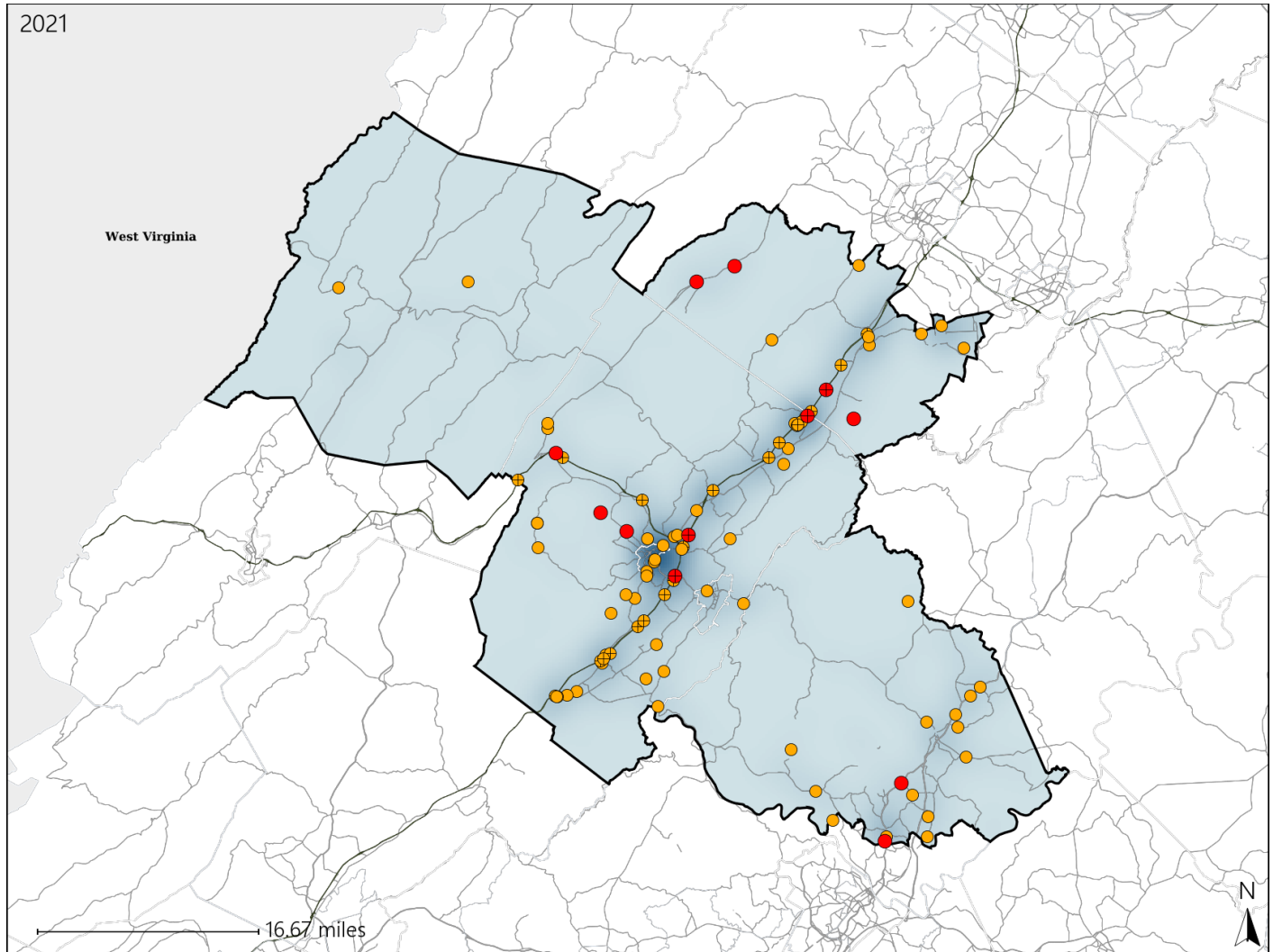


Virginia House District 24 Crash Statistics

Report Generated April, 2022

	Count	Highest Time Period(s)	Highest Day(s)	Highest Month(s)
Fatal Crashes	12	9:00pm - 11:59pm	Wednesday	March • November
Resulting Fatalities	14	(33%)	(33%)	(34%)
Serious Injury Crashes	80	Noon - 2:59pm	Wednesday	June
		(22%)	(18%)	(16%)



House District 24 Crashes

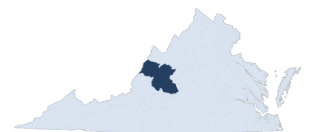
Interstate Crashes

- Fatal
- Serious Injury

Non-interstate Crashes

- Fatal
- Serious Injury

The blue gradient represents the density of all crashes.

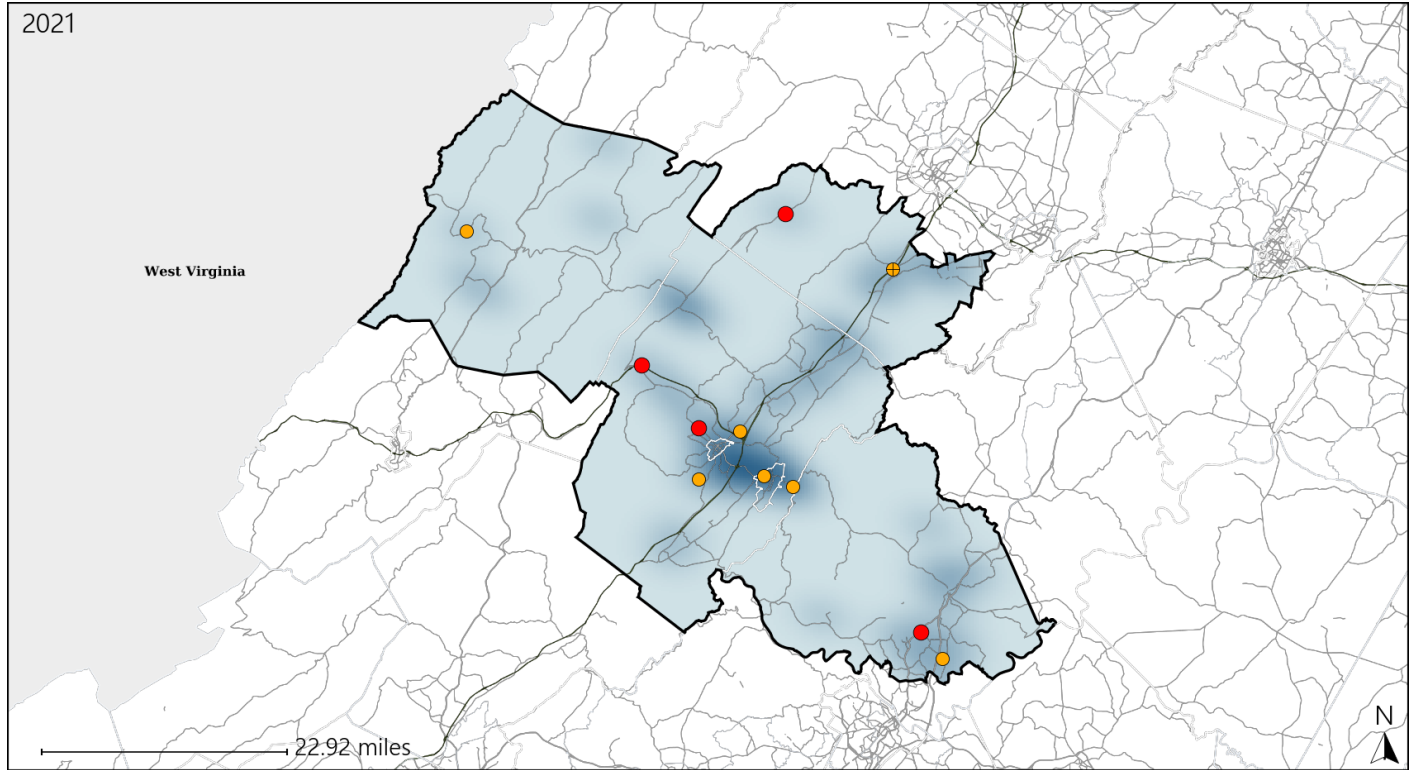


Available Crash Data - Calendar Year (CY)	CY 2018	CY 2019	CY 2020	CY 2021
Total Crashes	1406	1323	1200	1253
Fatal Crashes	16	14	10	12
Injury Crashes	403	357	333	348

Virginia House District 24 Alcohol Crash Statistics

Report Generated April, 2022

	Count	Highest Time Period(s)	Highest Day(s)	Highest Month(s)
Fatal Crashes	4	Noon - 2:59pm	Thursday	August • March
Resulting Fatalities	4	(50%)	(50%)	(50%)
Serious Injury Crashes	7	6:00pm - 8:59pm	Friday • Thursday	August • February
		(29%)	(58%)	(28%)



House District 24 Alcohol-Related Crashes

Interstate Crashes

Non-interstate Crashes

- Fatal
- Serious Injury

- Fatal
- Serious Injury

The blue gradient represents the density of all alcohol-related crashes.



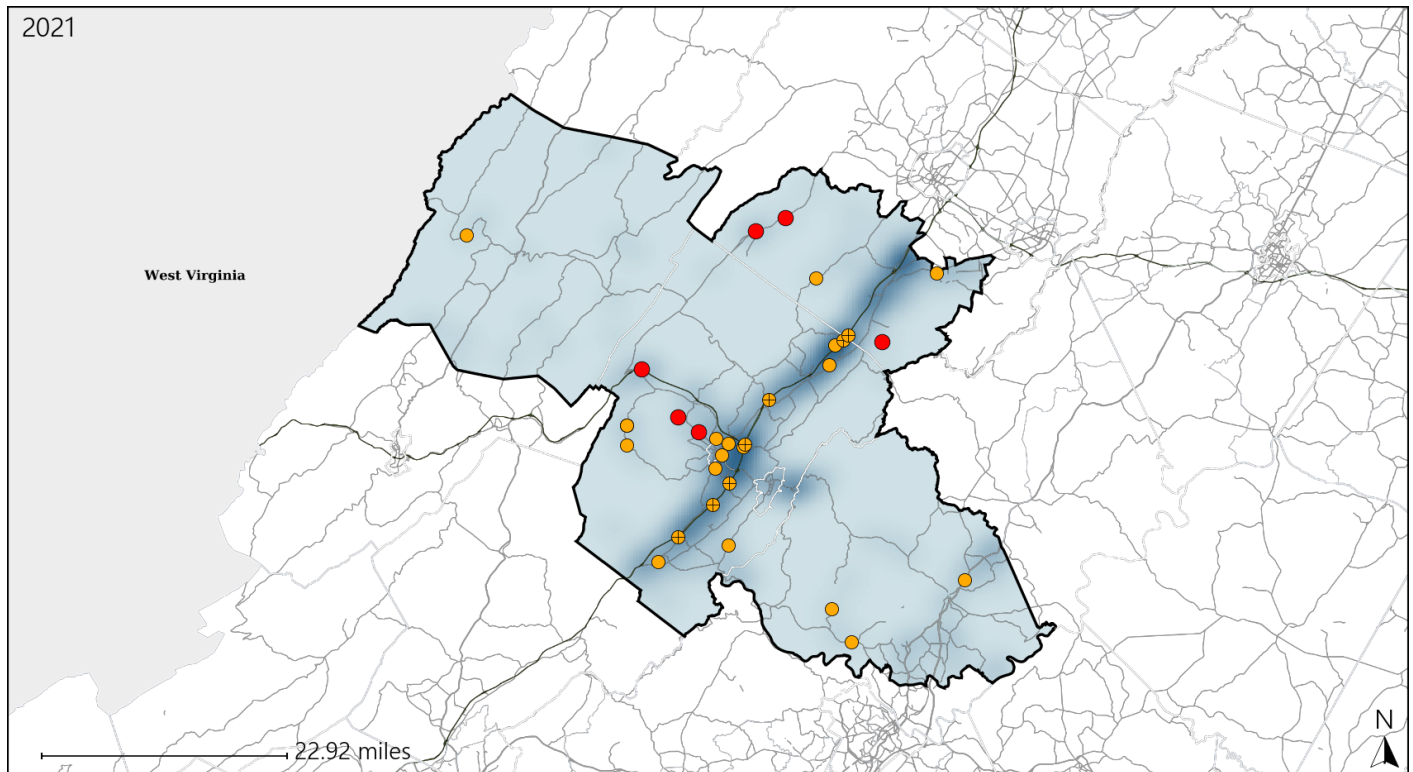
Available Crash Data - Calendar Year (CY)	CY 2018	CY 2019	CY 2020	CY 2021
Total Crashes	1406	1323	1200	1253
Fatal Crashes	16	14	10	12
Injury Crashes	403	357	333	348
Alcohol-Related Fatal Crashes	3	4	3	4
Percent of Alcohol-Related Fatal Crashes to Total Fatal Crashes	19%	29%	30%	33%
Alcohol-Related Injury Crashes	29	32	29	22
Percent of Alcohol-Related Injury Crashes to Total Injury Crashes	7%	9%	9%	6%

Report of Crashes for January 1st - December 31st, 2021

Virginia House District 24 Speed Crash Statistics

Report Generated April, 2022

	Count	Highest Time Period(s)	Highest Day(s)	Highest Month(s)
Fatal Crashes	6	9:00am - 11:59am	Thursday	August • February
Resulting Fatalities	6	9:00pm - 11:59pm (66%)	(50%)	(34%)
Serious Injury Crashes	25	3:00pm - 5:59pm Midnight - 2:59am (40%)	Friday • Saturday (40%)	October (20%)



House District 24 Speed-Related Crashes

Interstate Crashes

Non-interstate Crashes

● Fatal

● Fatal

⊕ Serious Injury

⊕ Serious Injury

The blue gradient represents the density of all speed-related crashes.

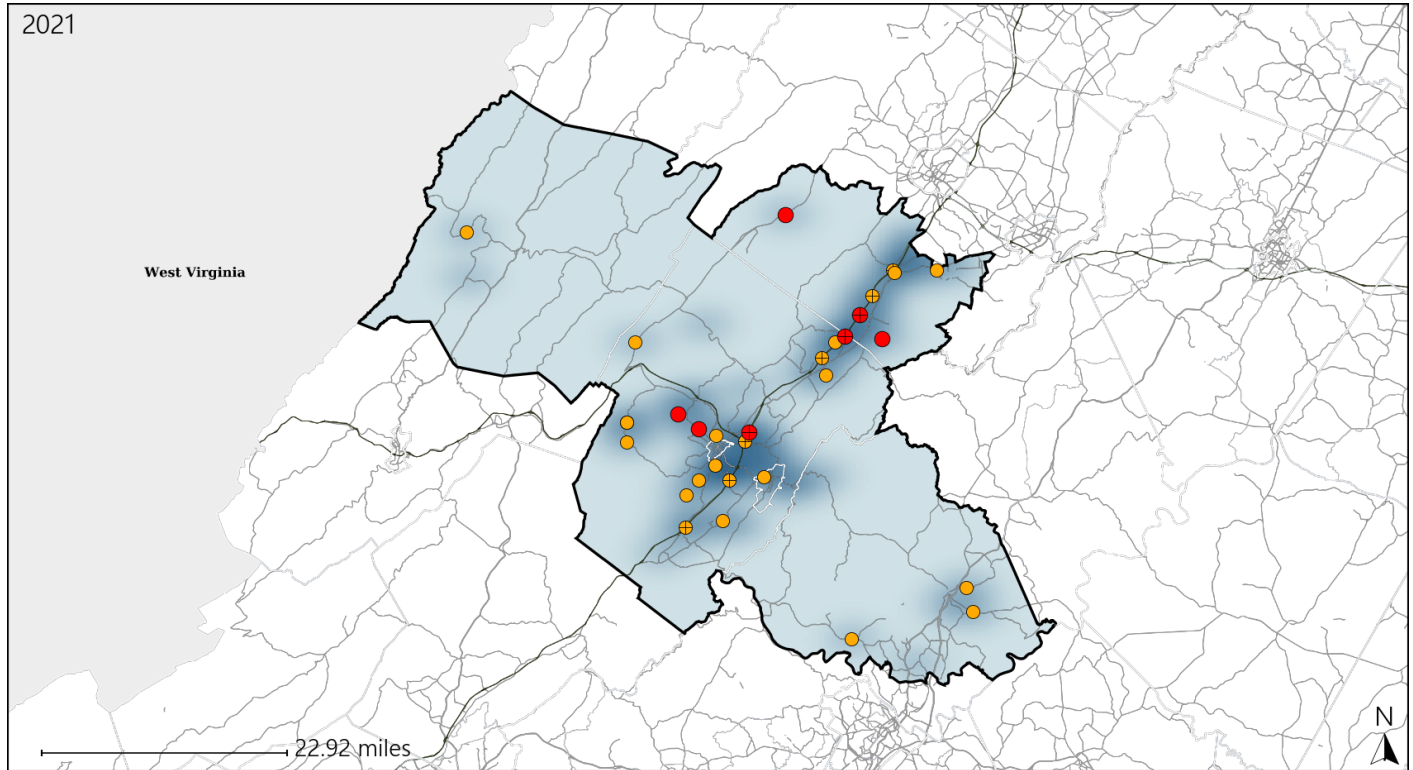


Available Crash Data - Calendar Year (CY)	CY 2018	CY 2019	CY 2020	CY 2021
Total Crashes	1406	1323	1200	1253
Fatal Crashes	16	14	10	12
Injury Crashes	403	357	333	348
Speed-Related Fatal Crashes	7	8	4	6
Percent of Speed-Related Fatal Crashes to Total Fatal Crashes	44%	57%	40%	50%
Speed-Related Injury Crashes	121	117	108	95
Percent of Speed-Related Injury Crashes to Total Injury Crashes	30%	33%	32%	27%

Virginia House District 24 Unrestrained Crash Statistics

Report Generated April, 2022

	Count	Highest Time Period(s)	Highest Day(s)	Highest Month(s)
Fatal Crashes	7	9:00am - 11:59am	Monday • Wednesday	November
Unrestrained Fatalities	8	Noon - 2:59pm (58%)	(86%)	(29%)
Serious Injury Crashes	24	6:00am - 8:59am (21%)	Wednesday (21%)	June (25%)



House District 24 Unrestrained-Related Crashes

Interstate Crashes

Non-interstate Crashes

- Fatal
- Serious Injury

- Fatal
- Serious Injury

The blue gradient represents the density of all unrestrained-related crashes.

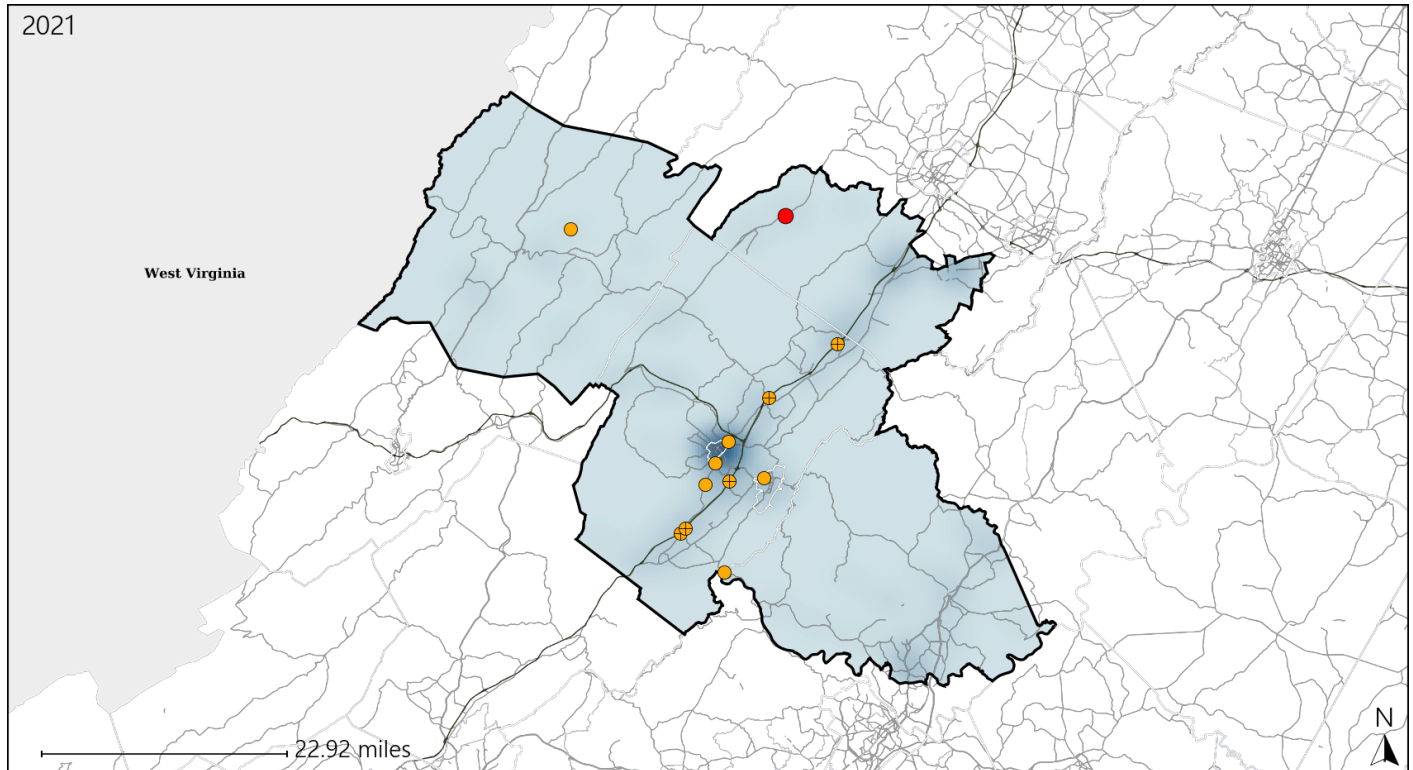


Available Crash Data - Calendar Year (CY)	CY 2018	CY 2019	CY 2020	CY 2021
Total Crashes	1406	1323	1200	1253
Fatalities	16	14	10	14
Injuries	557	493	472	479
Unrestrained Fatalities	9	5	6	8
Percent of Unrestrained Fatalities to Total Fatalities	56%	36%	60%	57%
Unrestrained Injuries	65	52	71	55
Percent of Unrestrained Injuries to Total Injuries	12%	11%	15%	11%

Virginia House District 24 Distracted Driving Crash Statistics

Report Generated April, 2022

	Count	Highest Time Period(s)	Highest Day(s)	Highest Month(s)
Fatal Crashes	1	Noon - 2:59pm (100%)	Thursday (100%)	August (100%)
Resulting Fatalities	1			
Serious Injury Crashes	11	6:00am - 8:59am (27%)	Monday • Thursday (54%)	June (36%)



House District 24 Distracted Driving-Related Crashes

Interstate Crashes

Non-interstate Crashes

- Fatal
- ⊕ Serious Injury

- Fatal
- Serious Injury

The blue gradient represents the density of all distracted driving-related crashes.



Available Crash Data - Calendar Year (CY)	CY 2018	CY 2019	CY 2020	CY 2021
Total Crashes	1406	1323	1200	1253
Fatal Crashes	16	14	10	12
Injury Crashes	403	357	333	348
Distracted Driving-Related Fatal Crashes	4	0	1	1
Percent of Distracted Driving-Related Fatal Crashes to Total Fatal Crashes	25%	0%	10%	8%
Distracted Driving-Related Injury Crashes	74	41	46	58
Percent of Distracted Driving-Related Injury Crashes to Total Injury Crashes	18%	11%	14%	17%