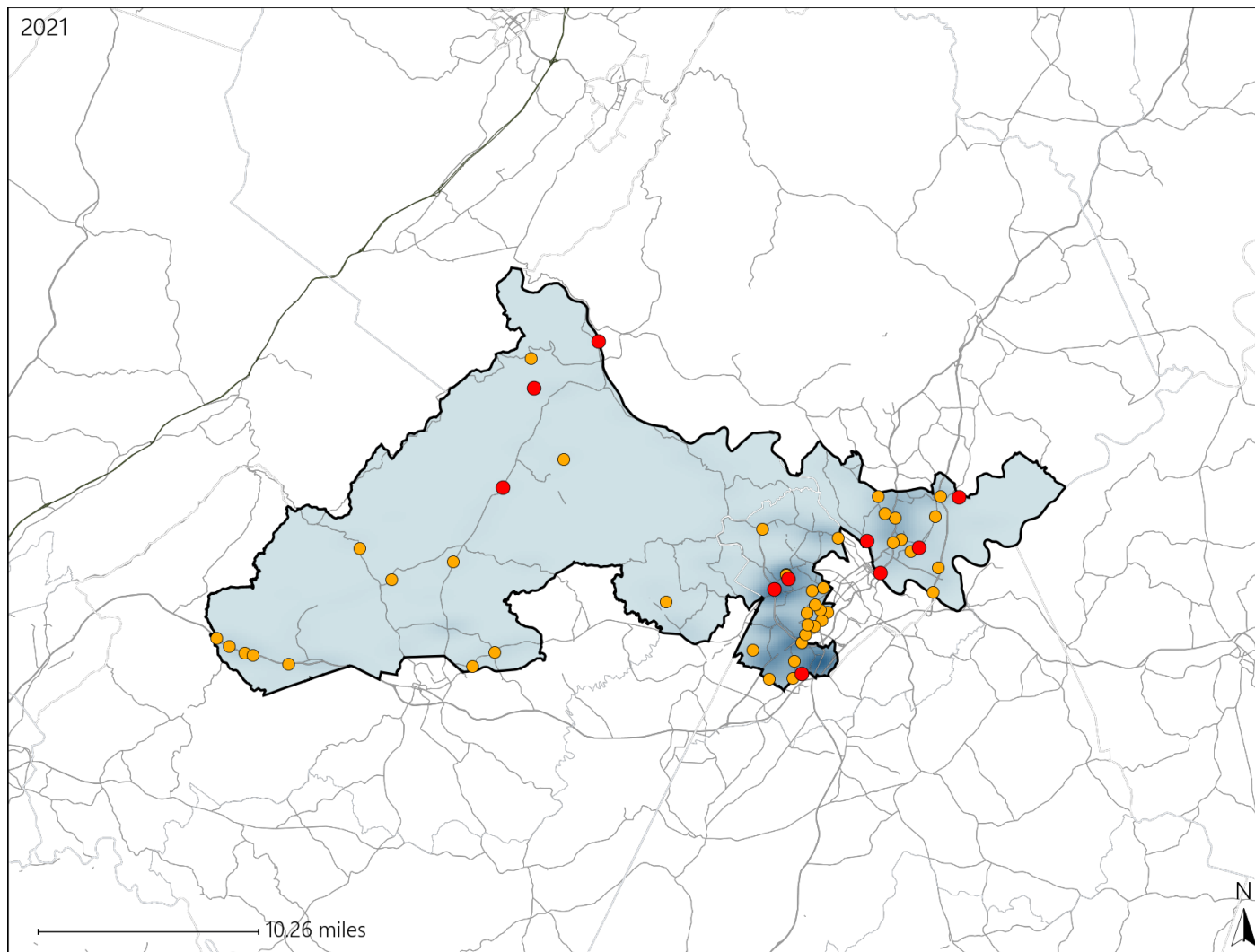


Virginia House District 23 Crash Statistics

Report Generated April, 2022

	Count	Highest Time Period(s)	Highest Day(s)	Highest Month(s)
Fatal Crashes	10	6:00pm - 8:59pm	Monday	December - May
Resulting Fatalities	10	(40%)	(30%)	(40%)
Serious Injury Crashes	43	3:00pm - 5:59pm	Sunday	July
		(28%)	(26%)	(19%)



House District 23 Crashes

Interstate Crashes

- Fatal
- Serious Injury

Non-interstate Crashes

- Fatal
- Serious Injury

The blue gradient represents the density of all crashes.

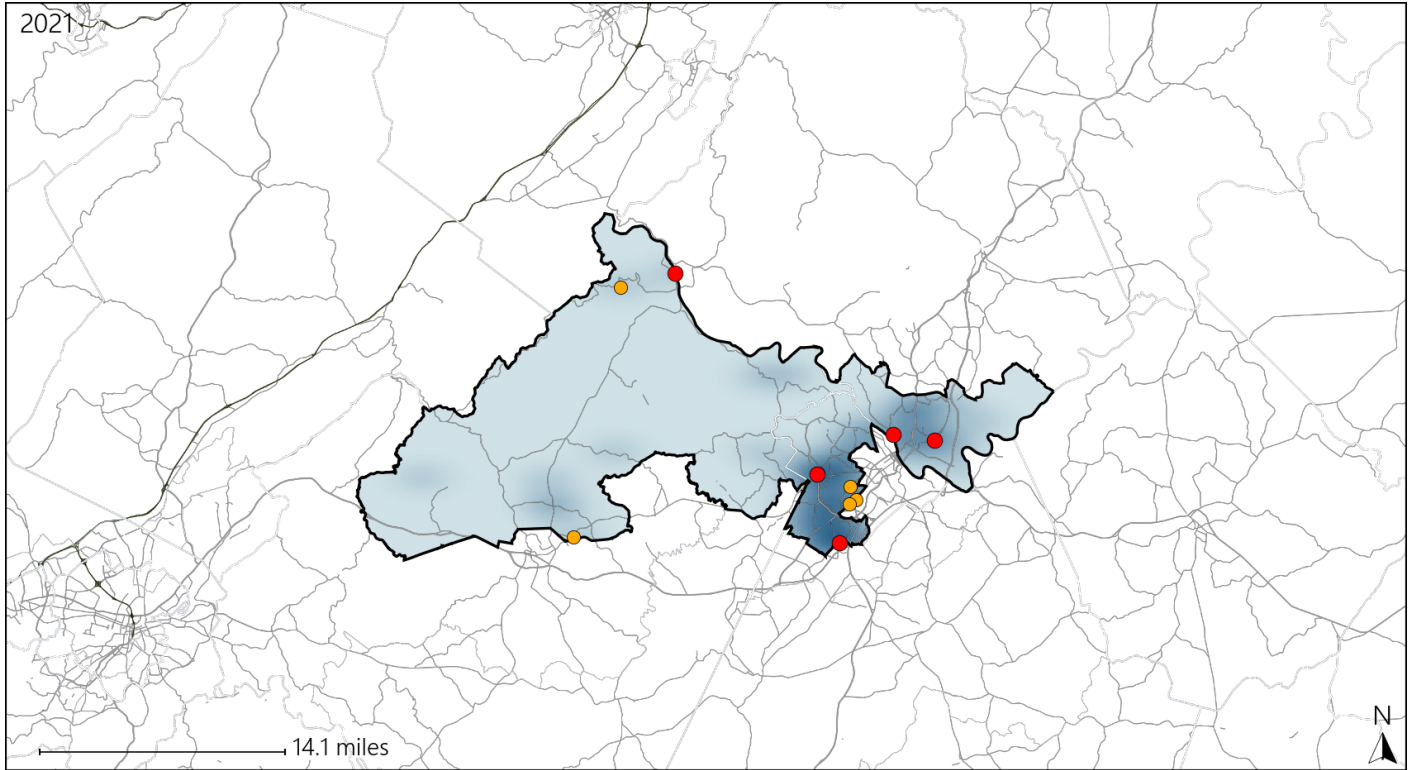


Available Crash Data - Calendar Year (CY)	CY 2018	CY 2019	CY 2020	CY 2021
Total Crashes	1106	1124	871	957
Fatal Crashes	9	8	5	10
Injury Crashes	556	449	307	332

Virginia House District 23 Alcohol Crash Statistics

Report Generated April, 2022

	Count	Highest Time Period(s)	Highest Day(s)	Highest Month(s)
Fatal Crashes	5	6:00pm - 8:59pm	Monday • Saturday	December • June
Resulting Fatalities	5	(80%)	(40%)	(40%)
Serious Injury Crashes	6	Midnight - 2:59am	Sunday • Wednesday	October
		(33%)	(66%)	(33%)



House District 23 Alcohol-Related Crashes

Interstate Crashes

Non-interstate Crashes

- Fatal
- Serious Injury

- Fatal
- Serious Injury

The blue gradient represents the density of all alcohol-related crashes.

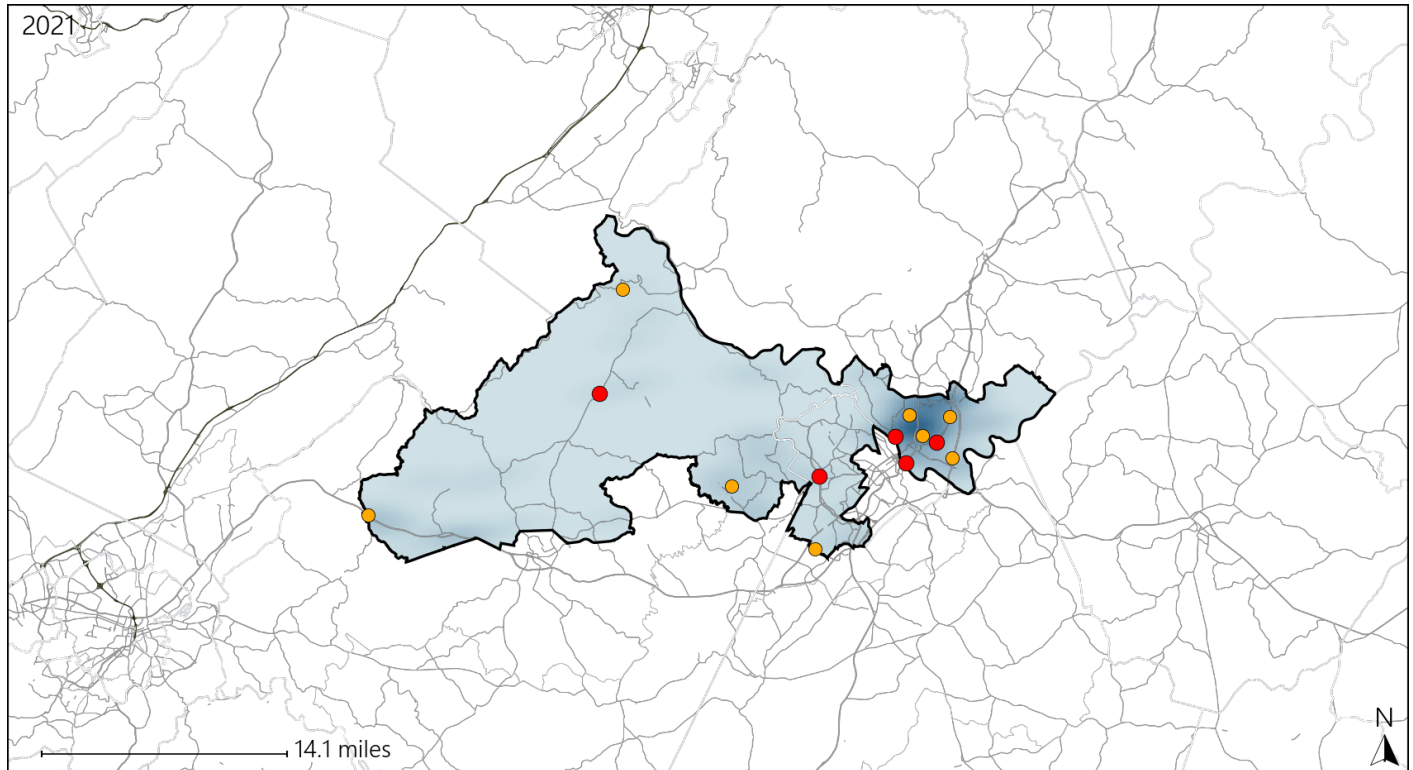


Available Crash Data - Calendar Year (CY)	CY 2018	CY 2019	CY 2020	CY 2021
Total Crashes	1106	1124	871	957
Fatal Crashes	9	8	5	10
Injury Crashes	556	449	307	332
Alcohol-Related Fatal Crashes	1	1	4	5
Percent of Alcohol-Related Fatal Crashes to Total Fatal Crashes	11%	13%	80%	50%
Alcohol-Related Injury Crashes	39	40	29	22
Percent of Alcohol-Related Injury Crashes to Total Injury Crashes	7%	9%	9%	7%

Virginia House District 23 Speed Crash Statistics

Report Generated April, 2022

	Count	Highest Time Period(s)	Highest Day(s)	Highest Month(s)
Fatal Crashes	5	3:00pm - 5:59pm	Monday	May
Resulting Fatalities	5	6:00pm - 8:59pm (80%)	(60%)	(40%)
Serious Injury Crashes	8	3:00pm - 5:59pm	Sunday	July
		6:00pm - 8:59pm (50%)	(50%)	(25%)



House District 23 Speed-Related Crashes

Interstate Crashes

Non-interstate Crashes

● Fatal

● Fatal

⊕ Serious Injury

⊕ Serious Injury

The blue gradient represents the density of all speed-related crashes.

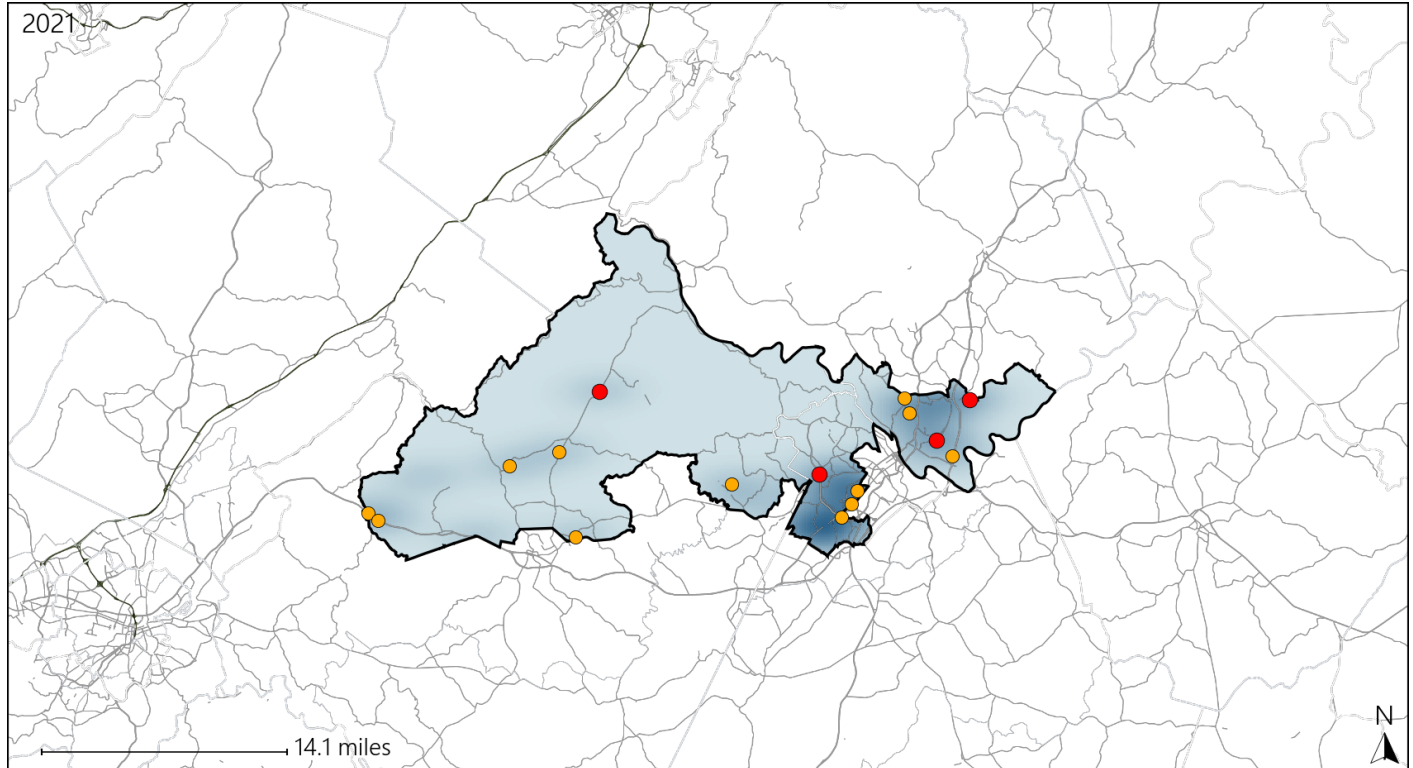


Available Crash Data - Calendar Year (CY)	CY 2018	CY 2019	CY 2020	CY 2021
Total Crashes	1106	1124	871	957
Fatal Crashes	9	8	5	10
Injury Crashes	556	449	307	332
Speed-Related Fatal Crashes	2	2	1	5
Percent of Speed-Related Fatal Crashes to Total Fatal Crashes	22%	25%	20%	50%
Speed-Related Injury Crashes	40	38	36	33
Percent of Speed-Related Injury Crashes to Total Injury Crashes	7%	8%	12%	10%

Virginia House District 23 Unrestrained Crash Statistics

Report Generated April, 2022

	Count	Highest Time Period(s)	Highest Day(s)	Highest Month(s)
Fatal Crashes	4	3:00pm - 5:59pm	Monday • Thursday	December • May
Unrestrained Fatalities	4	(50%)	(100%)	(50%)
Serious Injury Crashes	12	Midnight - 2:59am	Sunday	August • July
		(33%)	(42%)	(34%)



House District 23 Unrestrained-Related Crashes

Interstate Crashes

Non-interstate Crashes

● Fatal

● Fatal

● Serious Injury

● Serious Injury

The blue gradient represents the density of all unrestrained-related crashes.

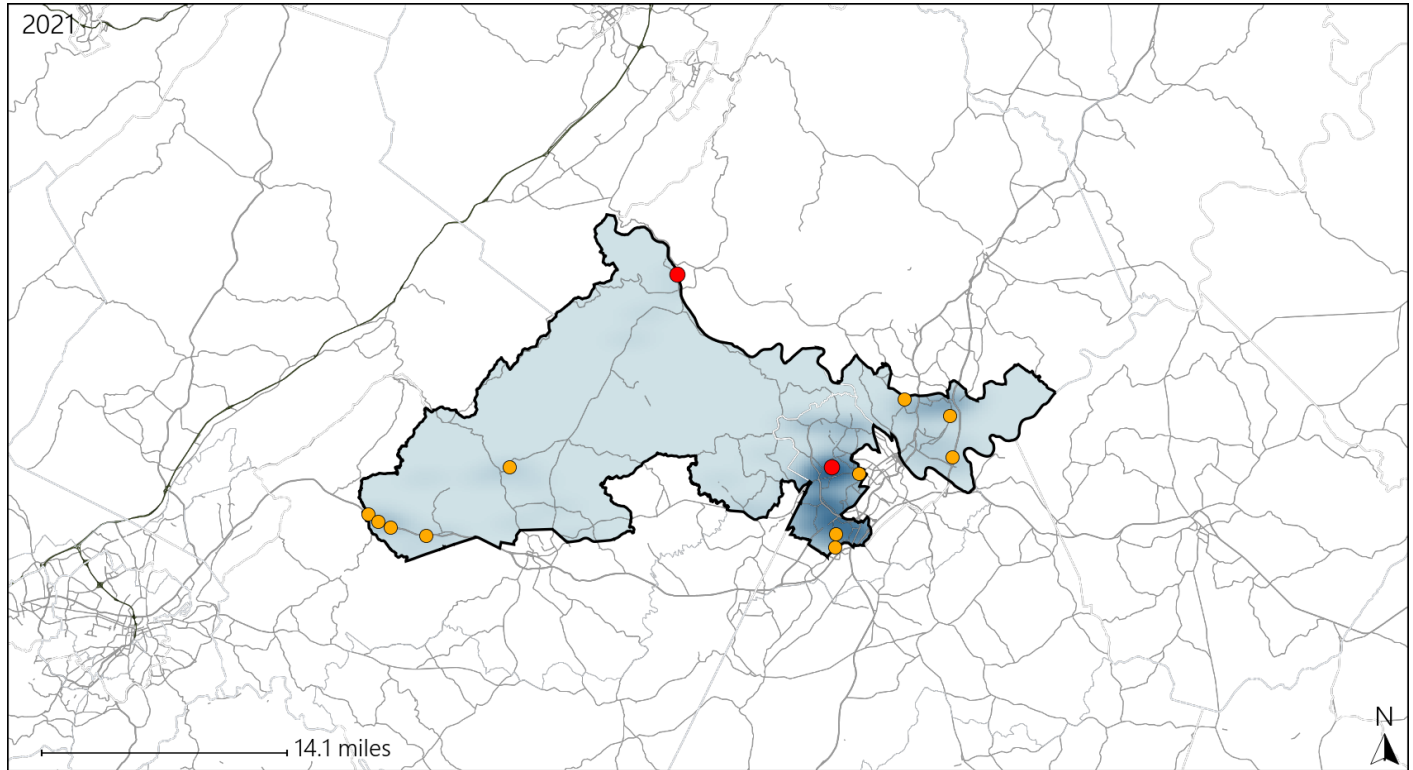


Available Crash Data - Calendar Year (CY)	CY 2018	CY 2019	CY 2020	CY 2021
Total Crashes	1106	1124	871	957
Fatalities	10	8	5	10
Injuries	913	673	411	478
Unrestrained Fatalities	3	0	1	4
Percent of Unrestrained Fatalities to Total Fatalities	30%	0%	20%	40%
Unrestrained Injuries	31	30	35	43
Percent of Unrestrained Injuries to Total Injuries	3%	4%	9%	9%

Virginia House District 23 Distracted Driving Crash Statistics

Report Generated April, 2022

	Count	Highest Time Period(s)	Highest Day(s)	Highest Month(s)
Fatal Crashes	2	3:00pm - 5:59pm	Tuesday	December • July
Resulting Fatalities	2	6:00pm - 8:59pm (100%)	(100%)	(100%)
Serious Injury Crashes	11	3:00pm - 5:59pm (45%)	Sunday (36%)	July (64%)



House District 23 Distracted Driving-Related Crashes

Interstate Crashes

Non-interstate Crashes

- Fatal
- Serious Injury

- Fatal
- Serious Injury

The blue gradient represents the density of all distracted driving-related crashes.



Available Crash Data - Calendar Year (CY)	CY 2018	CY 2019	CY 2020	CY 2021
Total Crashes	1106	1124	871	957
Fatal Crashes	9	8	5	10
Injury Crashes	556	449	307	332
Distracted Driving-Related Fatal Crashes	3	2	0	2
Percent of Distracted Driving-Related Fatal Crashes to Total Fatal Crashes	33%	25%	0%	20%
Distracted Driving-Related Injury Crashes	104	90	64	59
Percent of Distracted Driving-Related Injury Crashes to Total Injury Crashes	19%	20%	21%	18%