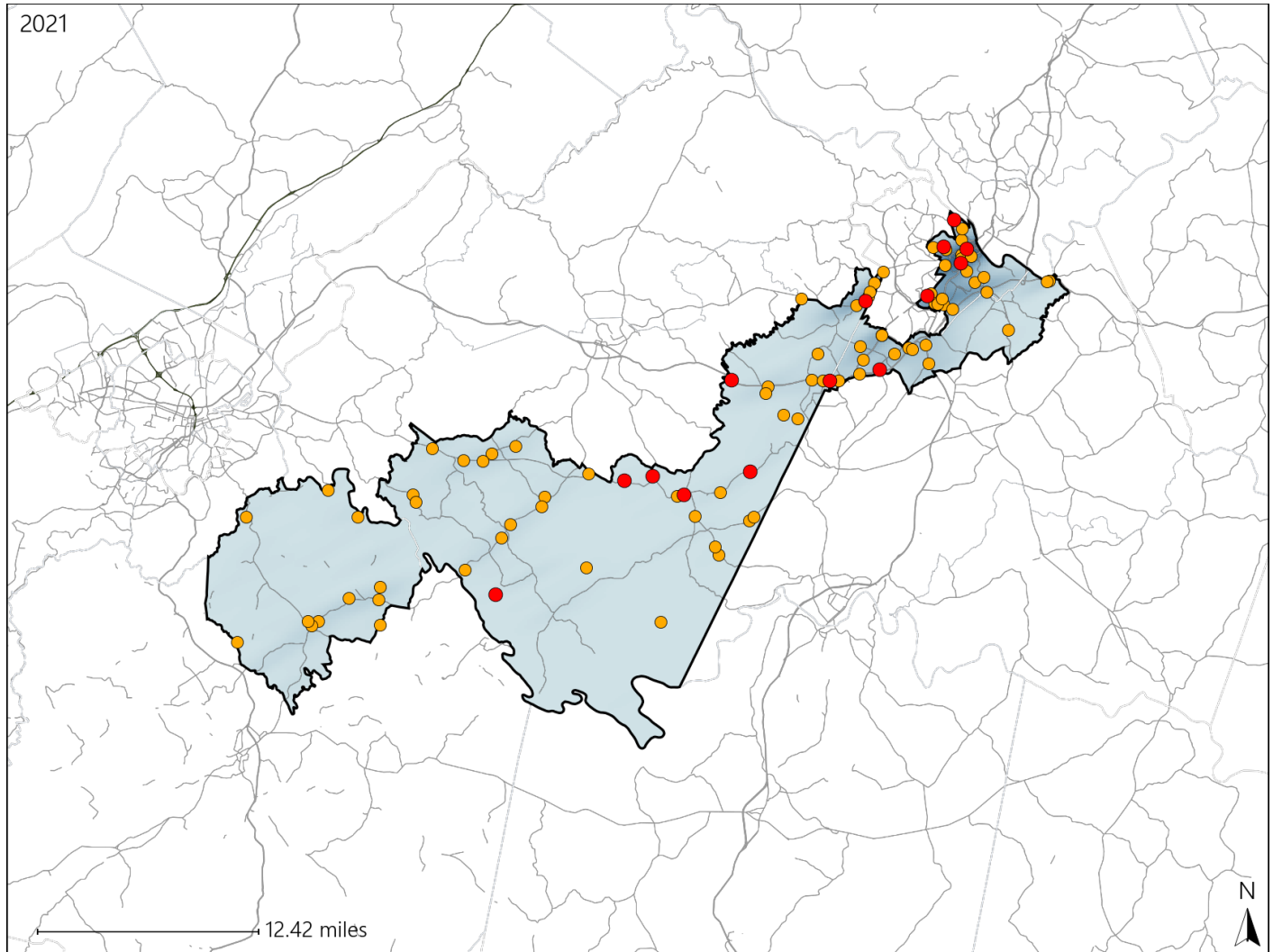


Virginia House District 22 Crash Statistics

Report Generated April, 2022

	Count	Highest Time Period(s)	Highest Day(s)	Highest Month(s)
Fatal Crashes	14	9:00am - 11:59am (29%)	Friday • Thursday (58%)	July (29%)
Resulting Fatalities	14			
Serious Injury Crashes	81	3:00pm - 5:59pm (25%)	Saturday (20%)	April • July (22%)



House District 22 Crashes

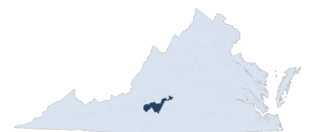
Interstate Crashes

- Fatal
- Serious Injury

Non-interstate Crashes

- Fatal
- Serious Injury

The blue gradient represents the density of all crashes.



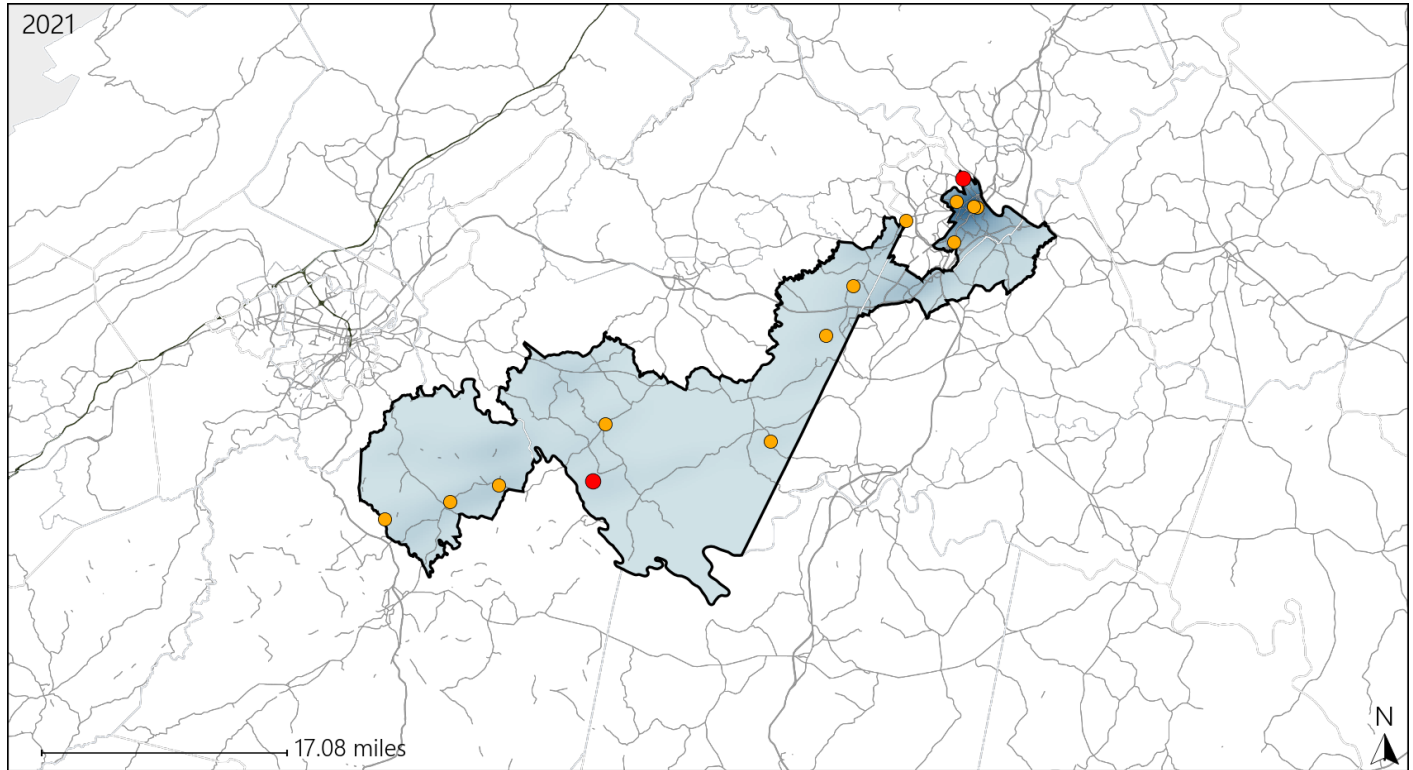
Available Crash Data - Calendar Year (CY)	CY 2018	CY 2019	CY 2020	CY 2021
Total Crashes	1624	1568	1255	1298
Fatal Crashes	11	16	11	14
Injury Crashes	775	572	442	442

Report of Crashes for January 1st - December 31st, 2021

Virginia House District 22 Alcohol Crash Statistics

Report Generated April, 2022

	Count	Highest Time Period(s)	Highest Day(s)	Highest Month(s)
Fatal Crashes	2	3:00am - 5:59am	Saturday • Thursday	March • October
Resulting Fatalities	2	Midnight - 2:59am (100%)	(100%)	(100%)
Serious Injury Crashes	12	9:00pm - 11:59pm	Wednesday	April • June
		(33%)	(25%)	(34%)



House District 22 Alcohol-Related Crashes

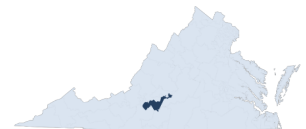
Interstate Crashes

Non-interstate Crashes

- Fatal
- Serious Injury

- Fatal
- Serious Injury

The blue gradient represents the density of all alcohol-related crashes.

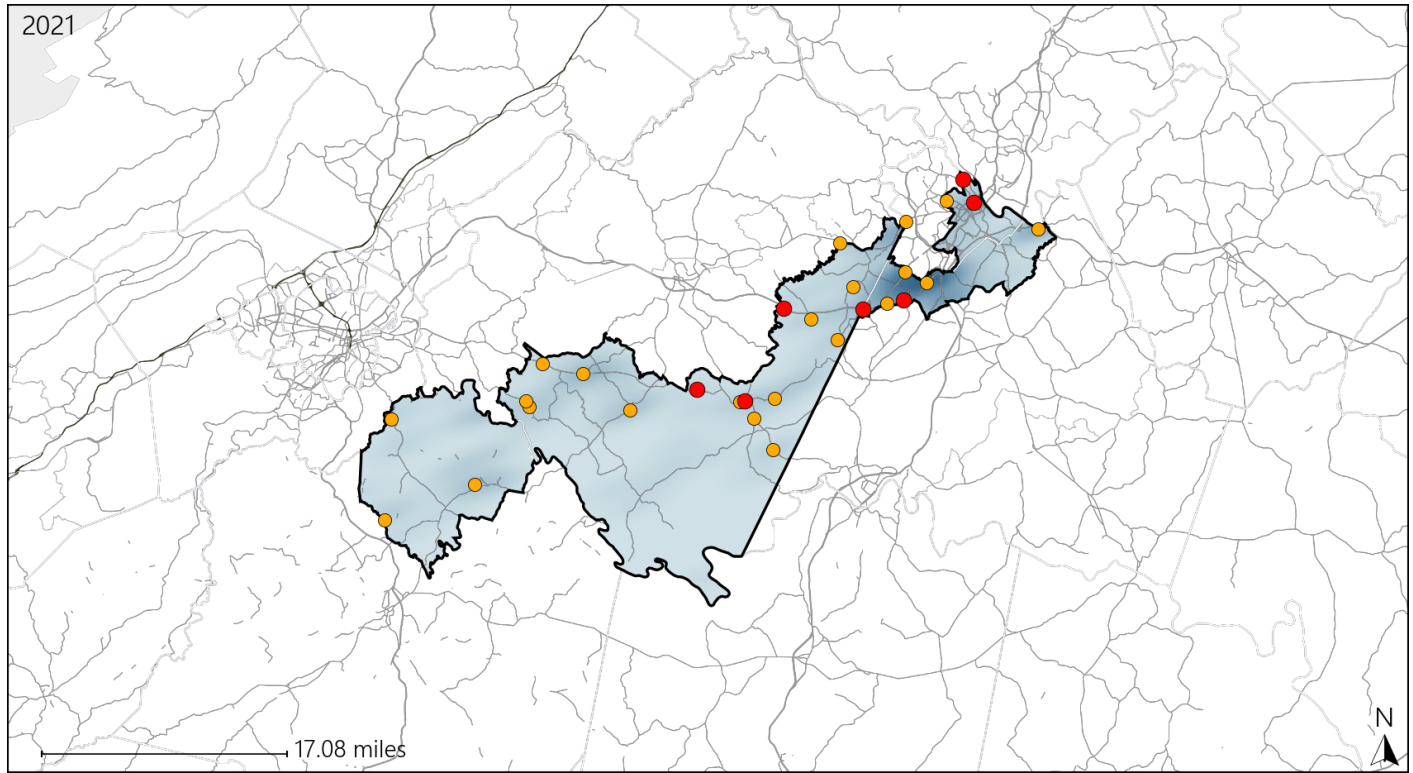


Available Crash Data - Calendar Year (CY)	CY 2018	CY 2019	CY 2020	CY 2021
Total Crashes	1624	1568	1255	1298
Fatal Crashes	11	16	11	14
Injury Crashes	775	572	442	442
Alcohol-Related Fatal Crashes	4	3	4	2
Percent of Alcohol-Related Fatal Crashes to Total Fatal Crashes	36%	19%	36%	14%
Alcohol-Related Injury Crashes	48	44	43	37
Percent of Alcohol-Related Injury Crashes to Total Injury Crashes	6%	8%	10%	8%

Virginia House District 22 Speed Crash Statistics

Report Generated April, 2022

	Count	Highest Time Period(s)	Highest Day(s)	Highest Month(s)
Fatal Crashes	7	6:00pm - 8:59pm	Friday	July • June
Resulting Fatalities	7	Noon - 2:59pm (58%)	(29%)	(58%)
Serious Injury Crashes	22	3:00pm - 5:59pm 9:00pm - 11:59pm (36%)	Wednesday (27%)	April • November (28%)



House District 22 Speed-Related Crashes

Interstate Crashes

Non-interstate Crashes

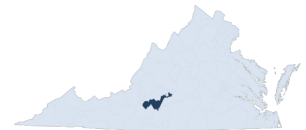
● Fatal

● Fatal

⊕ Serious Injury

⊕ Serious Injury

The blue gradient represents the density of all speed-related crashes.

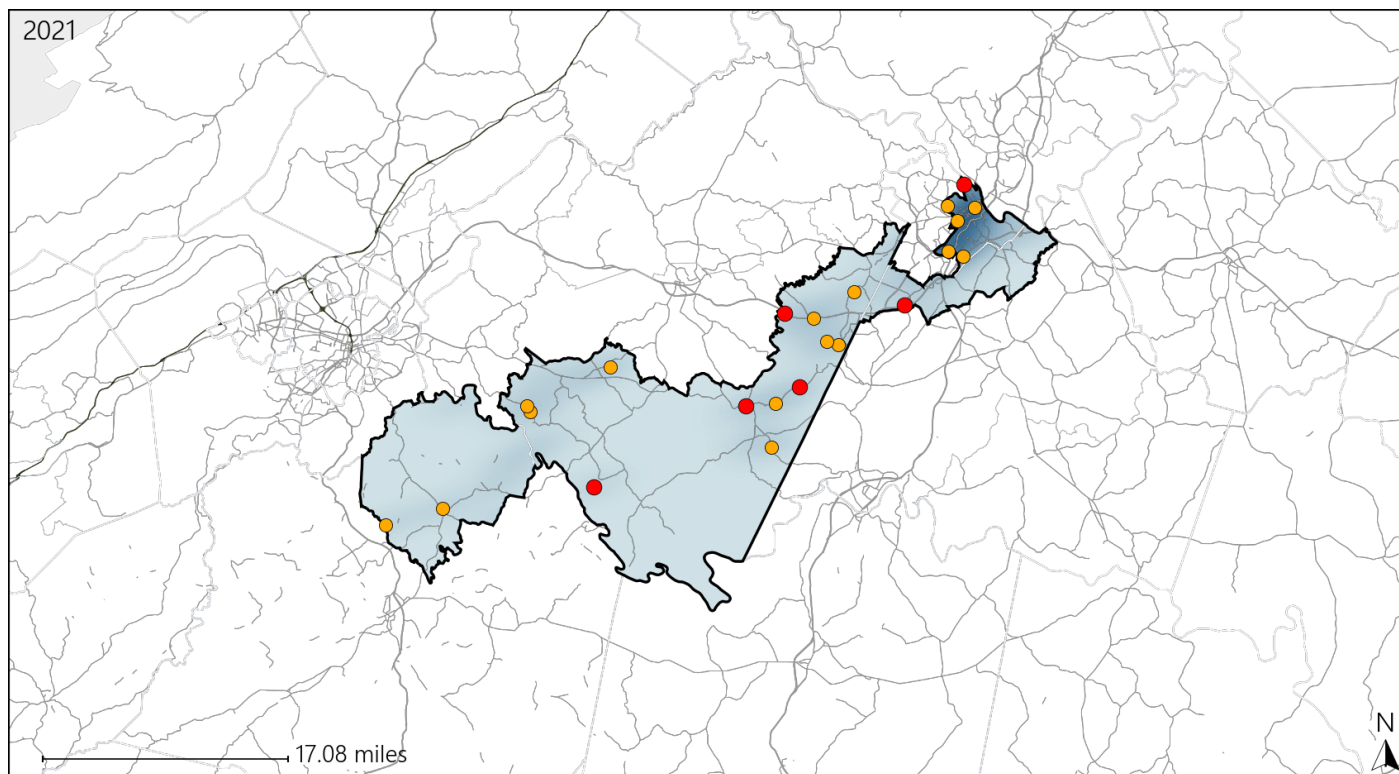


Available Crash Data - Calendar Year (CY)	CY 2018	CY 2019	CY 2020	CY 2021
Total Crashes	1624	1568	1255	1298
Fatal Crashes	11	16	11	14
Injury Crashes	775	572	442	442
Speed-Related Fatal Crashes	3	6	2	7
Percent of Speed-Related Fatal Crashes to Total Fatal Crashes	27%	38%	18%	50%
Speed-Related Injury Crashes	71	60	50	51
Percent of Speed-Related Injury Crashes to Total Injury Crashes	9%	10%	11%	12%

Virginia House District 22 Unrestrained Crash Statistics

Report Generated April, 2022

	Count	Highest Time Period(s)	Highest Day(s)	Highest Month(s)
Fatal Crashes	6	Midnight - 2:59am	Monday	July
Unrestrained Fatalities	6	(33%)	(33%)	(50%)
Serious Injury Crashes	16	3:00am - 5:59am	Wednesday	May
		9:00pm - 11:59pm	(31%)	(25%)
		(38%)		



House District 22 Unrestrained-Related Crashes

Interstate Crashes

Non-interstate Crashes

● Fatal

● Fatal

⊕ Serious Injury

⊕ Serious Injury

The blue gradient represents the density of all unrestrained-related crashes.

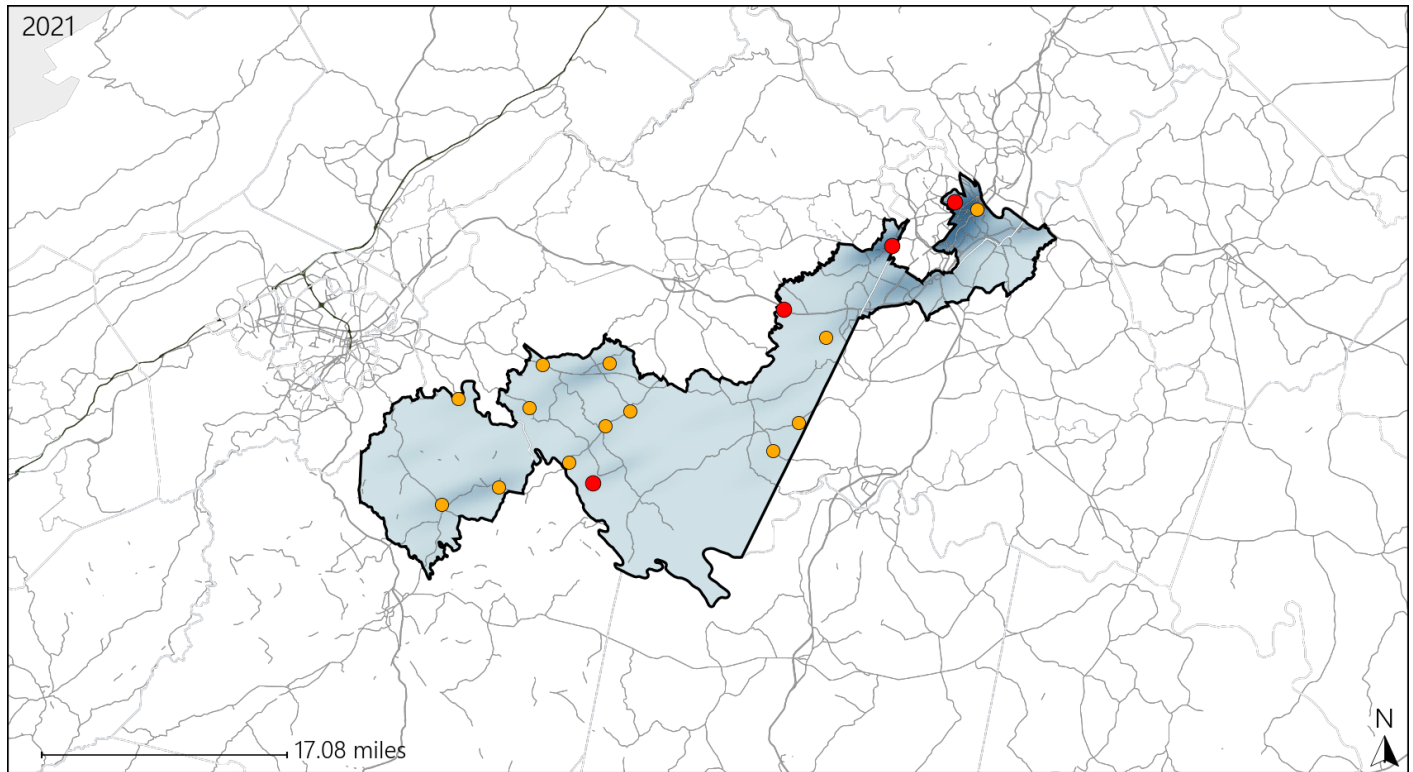


Available Crash Data - Calendar Year (CY)	CY 2018	CY 2019	CY 2020	CY 2021
Total Crashes	1624	1568	1255	1298
Fatalities	13	17	11	14
Injuries	1241	835	610	659
Unrestrained Fatalities	4	4	4	6
Percent of Unrestrained Fatalities to Total Fatalities	31%	24%	36%	43%
Unrestrained Injuries	61	55	56	65
Percent of Unrestrained Injuries to Total Injuries	5%	7%	9%	10%

Virginia House District 22 Distracted Driving Crash Statistics

Report Generated April, 2022

	Count	Highest Time Period(s)	Highest Day(s)	Highest Month(s)
Fatal Crashes	4	9:00am - 11:59am	Thursday	July
Resulting Fatalities	4	(50%)	(75%)	(50%)
Serious Injury Crashes	14	6:00am - 8:59am Noon - 2:59pm	Monday	April
		(58%)	(29%)	(21%)



House District 22 Distracted Driving-Related Crashes

Interstate Crashes

Non-interstate Crashes

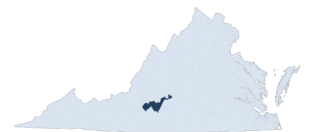
● Fatal

● Fatal

⊕ Serious Injury

⊕ Serious Injury

The blue gradient represents the density of all distracted driving-related crashes.



Available Crash Data - Calendar Year (CY)	CY 2018	CY 2019	CY 2020	CY 2021
Total Crashes	1624	1568	1255	1298
Fatal Crashes	11	16	11	14
Injury Crashes	775	572	442	442
Distracted Driving-Related Fatal Crashes	0	3	3	4
Percent of Distracted Driving-Related Fatal Crashes to Total Fatal Crashes	0%	19%	27%	29%
Distracted Driving-Related Injury Crashes	130	102	78	80
Percent of Distracted Driving-Related Injury Crashes to Total Injury Crashes	17%	18%	18%	18%