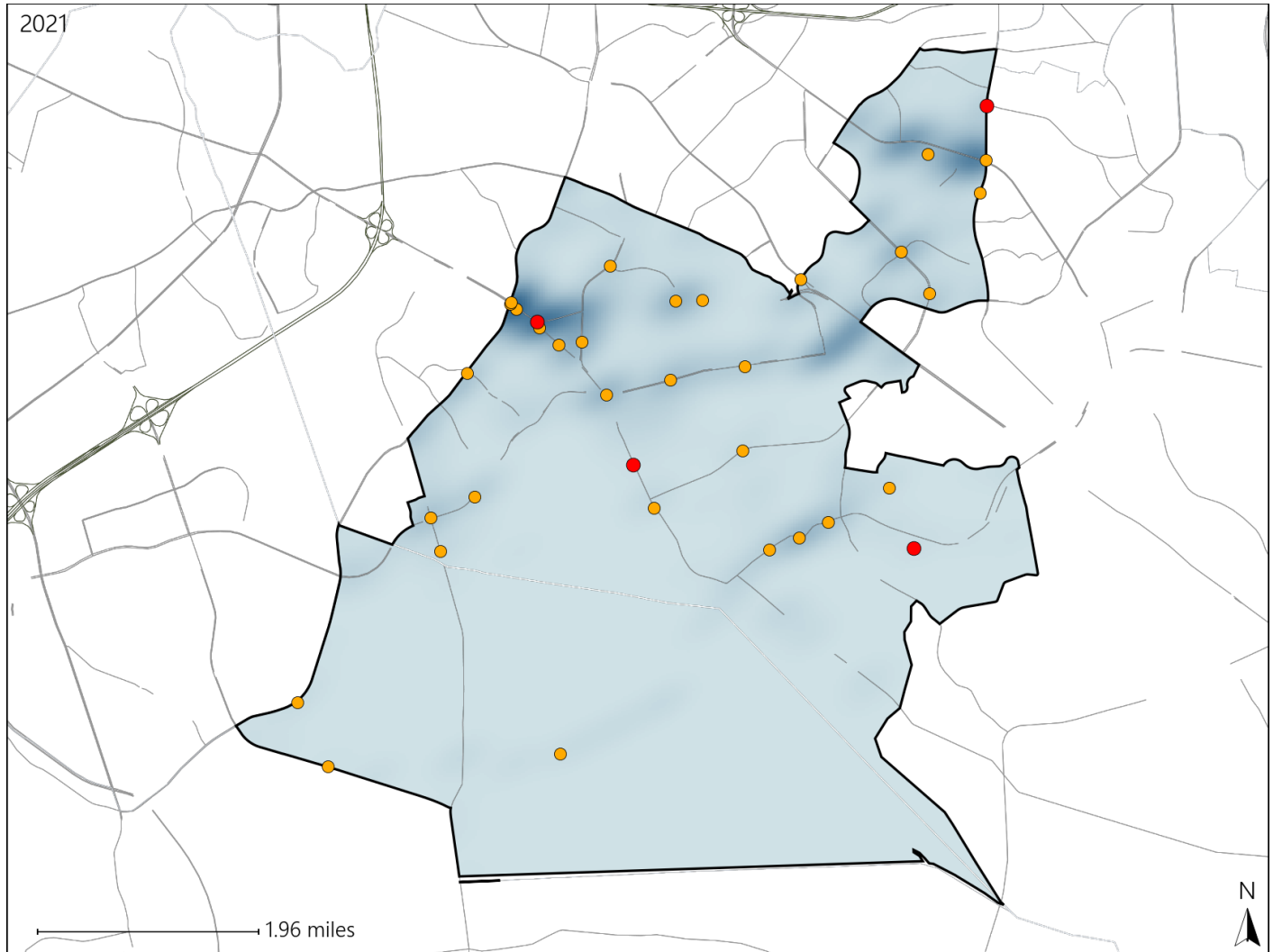


Virginia House District 21 Crash Statistics

Report Generated April, 2022

	Count	Highest Time Period(s)	Highest Day(s)	Highest Month(s)
Fatal Crashes	4	3:00pm - 5:59pm	Tuesday	April • December
Resulting Fatalities	4	(50%)	(50%)	(50%)
Serious Injury Crashes	32	Noon - 2:59pm	Thursday	June
		(25%)	(31%)	(16%)



House District 21 Crashes

Interstate Crashes

- Fatal
- Serious Injury

Non-interstate Crashes

- Fatal
- Serious Injury

The blue gradient represents the density of all crashes.

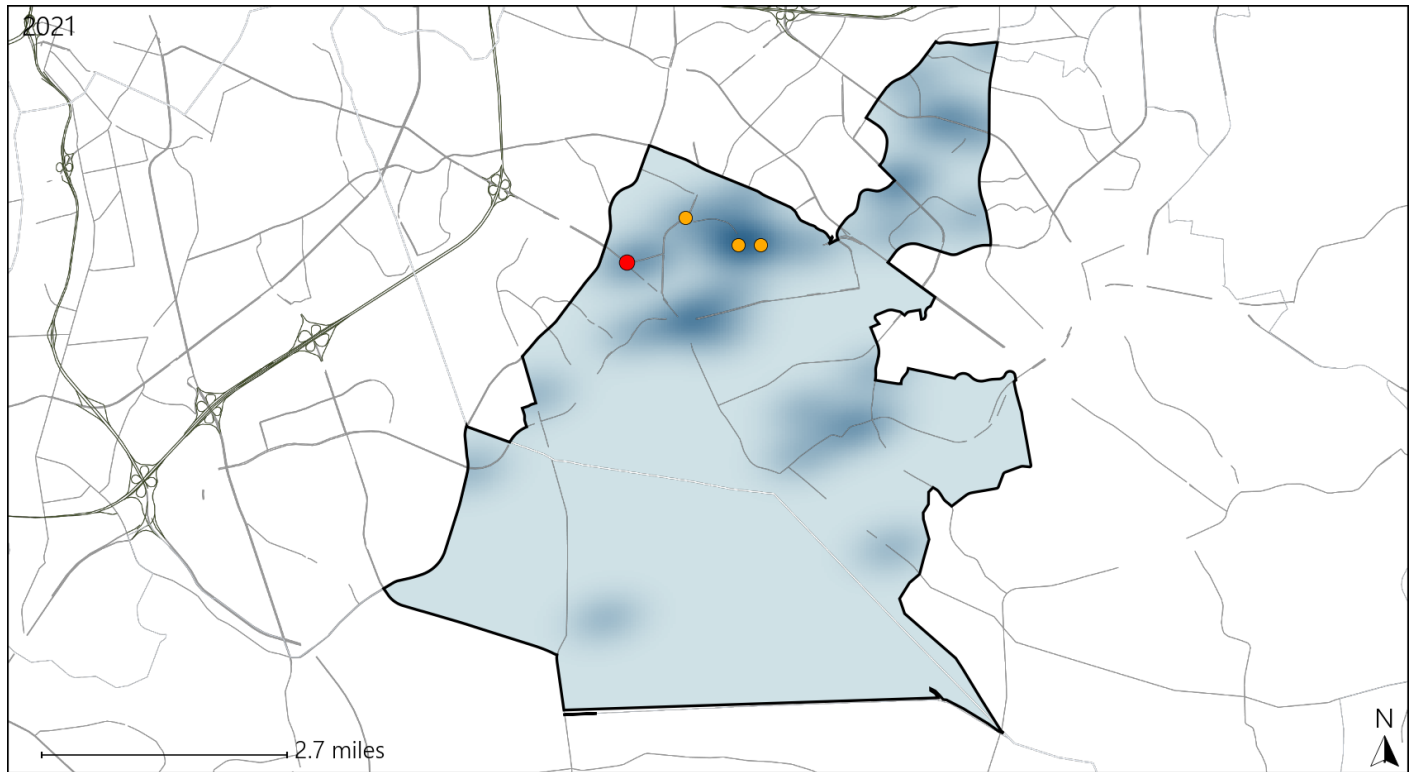


Available Crash Data - Calendar Year (CY)	CY 2018	CY 2019	CY 2020	CY 2021
Total Crashes	795	719	691	716
Fatal Crashes	3	5	3	4
Injury Crashes	247	229	229	269

Virginia House District 21 Alcohol Crash Statistics

Report Generated April, 2022

	Count	Highest Time Period(s)	Highest Day(s)	Highest Month(s)
Fatal Crashes	1	9:00pm - 11:59pm	Friday	May
Resulting Fatalities	1	(100%)	(100%)	(100%)
Serious Injury Crashes	3	3:00am - 5:59am	Thursday	April • June
		3:00pm - 5:59pm	(67%)	(66%)



House District 21 Alcohol-Related Crashes

Interstate Crashes

Non-interstate Crashes

● Fatal

● Fatal

⊕ Serious Injury

⊕ Serious Injury

The blue gradient represents the density of all alcohol-related crashes.



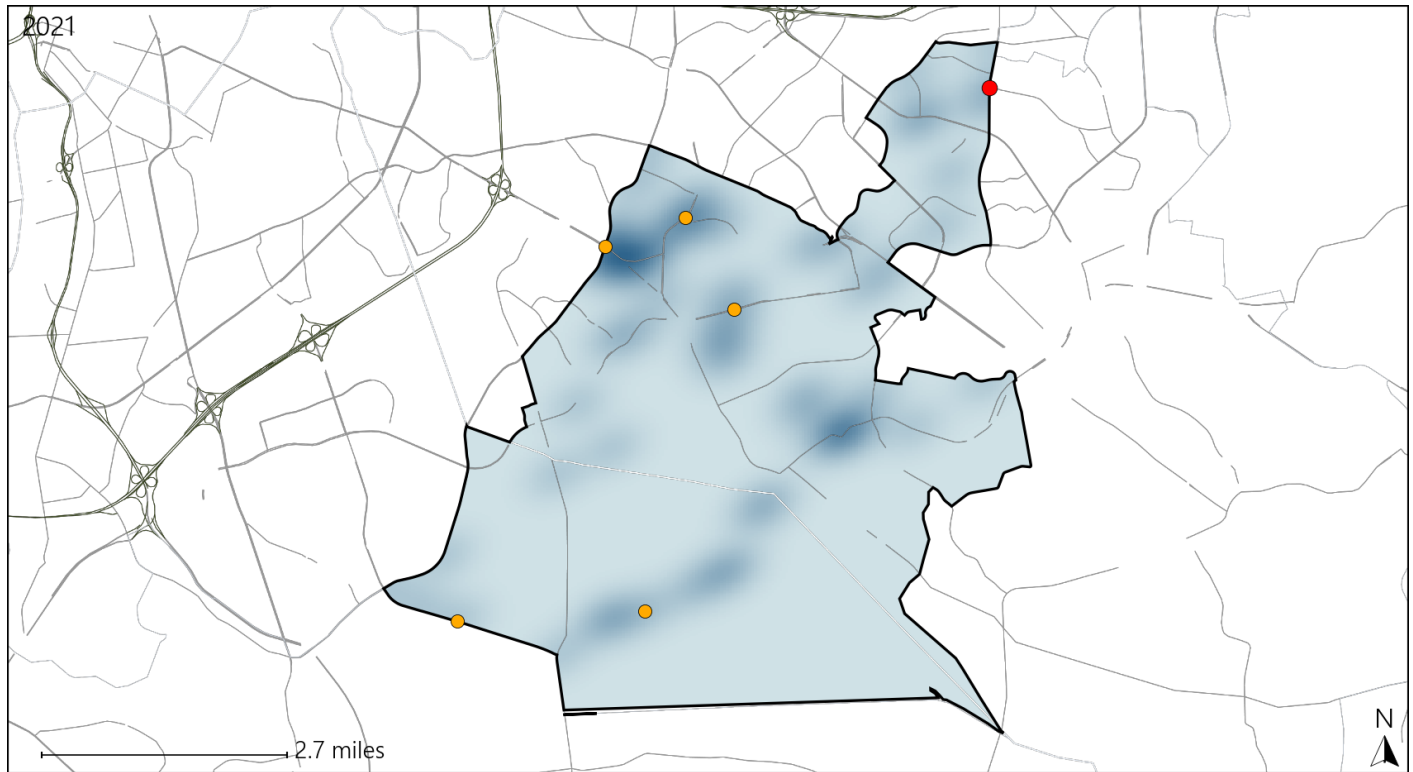
Available Crash Data - Calendar Year (CY)	CY 2018	CY 2019	CY 2020	CY 2021
Total Crashes	795	719	691	716
Fatal Crashes	3	5	3	4
Injury Crashes	247	229	229	269
Alcohol-Related Fatal Crashes	0	2	1	1
Percent of Alcohol-Related Fatal Crashes to Total Fatal Crashes	0%	40%	33%	25%
Alcohol-Related Injury Crashes	13	15	24	9
Percent of Alcohol-Related Injury Crashes to Total Injury Crashes	5%	7%	10%	3%

Report of Crashes for January 1st - December 31st, 2021

Virginia House District 21 Speed Crash Statistics

Report Generated April, 2022

	Count	Highest Time Period(s)	Highest Day(s)	Highest Month(s)
Fatal Crashes	1	Noon - 2:59pm	Tuesday	December
Resulting Fatalities	1	(100%)	(100%)	(100%)
Serious Injury Crashes	5	3:00am - 5:59am 3:00pm - 5:59pm	Sunday • Thursday	December • June
		(40%)	(80%)	(40%)



House District 21 Speed-Related Crashes

Interstate Crashes

Non-interstate Crashes

● Fatal

● Fatal

⊕ Serious Injury

⊕ Serious Injury

The blue gradient represents the density of all speed-related crashes.

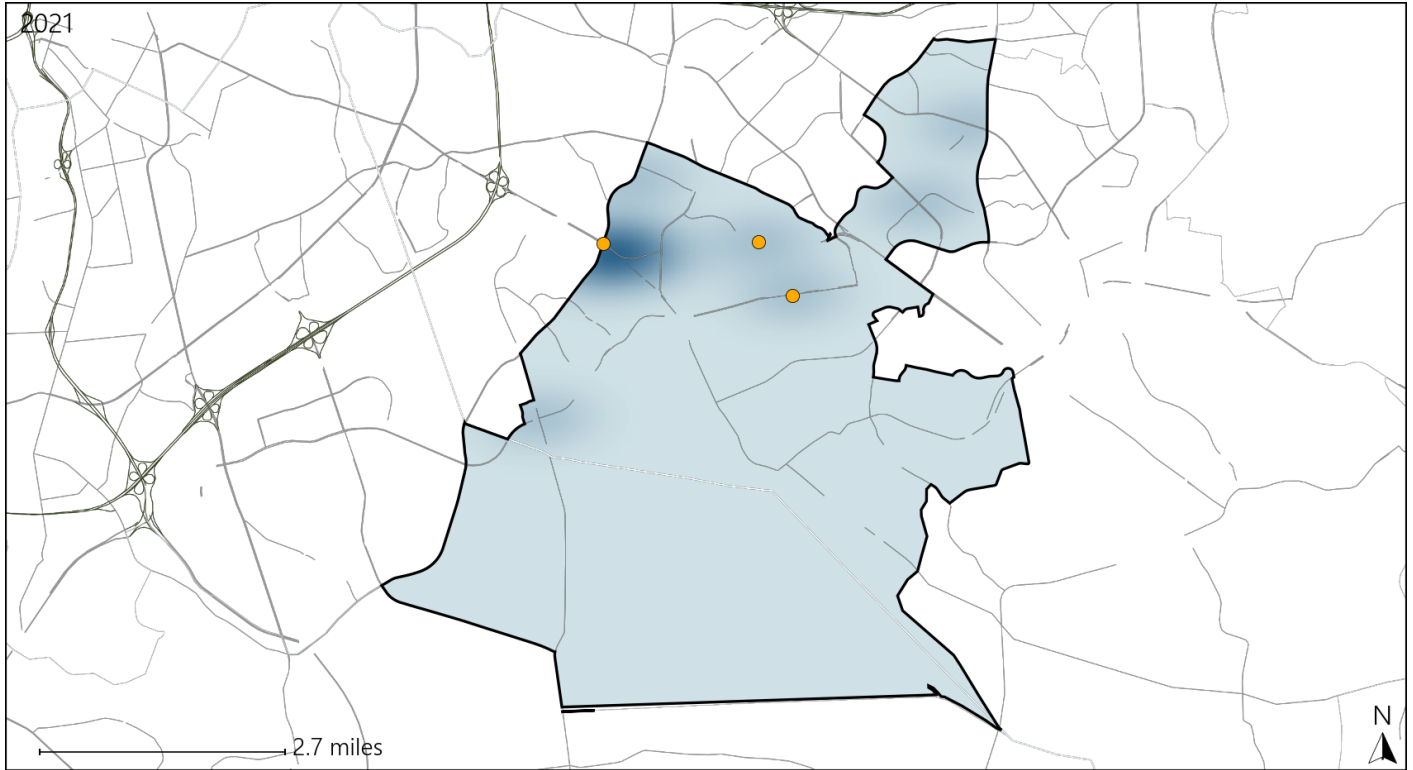


Available Crash Data - Calendar Year (CY)	CY 2018	CY 2019	CY 2020	CY 2021
Total Crashes	795	719	691	716
Fatal Crashes	3	5	3	4
Injury Crashes	247	229	229	269
Speed-Related Fatal Crashes	0	1	2	1
Percent of Speed-Related Fatal Crashes to Total Fatal Crashes	0%	20%	67%	25%
Speed-Related Injury Crashes	23	13	25	25
Percent of Speed-Related Injury Crashes to Total Injury Crashes	9%	6%	11%	9%

Virginia House District 21 Unrestrained Crash Statistics

Report Generated April, 2022

	Count	Highest Time Period(s)	Highest Day(s)	Highest Month(s)
Fatal Crashes	0	-	-	-
Unrestrained Fatalities	0	-	-	-
Serious Injury Crashes	3	3:00am - 5:59am (67%)	Sunday • Thursday (66%)	April • January (66%)



House District 21 Unrestrained-Related Crashes

Interstate Crashes

Non-interstate Crashes

- Fatal
- Serious Injury

- Fatal
- Serious Injury

The blue gradient represents the density of all unrestrained-related crashes.

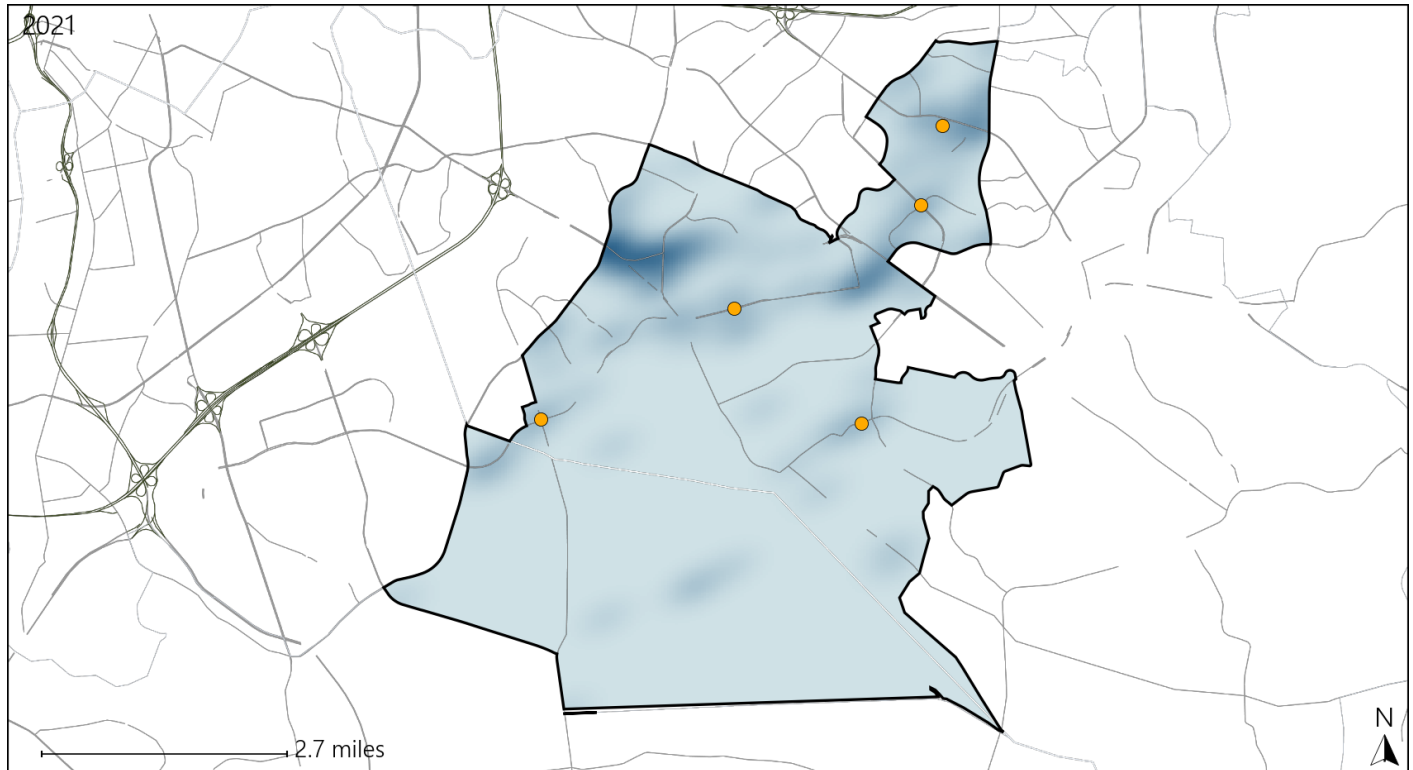


Available Crash Data - Calendar Year (CY)	CY 2018	CY 2019	CY 2020	CY 2021
Total Crashes	795	719	691	716
Fatalities	3	6	3	4
Injuries	418	386	402	491
Unrestrained Fatalities	1	1	1	0
Percent of Unrestrained Fatalities to Total Fatalities	33%	17%	33%	0%
Unrestrained Injuries	10	8	16	16
Percent of Unrestrained Injuries to Total Injuries	2%	2%	4%	3%

Virginia House District 21 Distracted Driving Crash Statistics

Report Generated April, 2022

	Count	Highest Time Period(s)	Highest Day(s)	Highest Month(s)
Fatal Crashes	0	-	-	-
Resulting Fatalities	0	-	-	-
Serious Injury Crashes	5	9:00am - 11:59am (40%)	Thursday (60%)	August + July (40%)



House District 21 Distracted Driving-Related Crashes

Interstate Crashes

- Fatal
- Serious Injury

Non-interstate Crashes

- Fatal
- Serious Injury

The blue gradient represents the density of all distracted driving-related crashes.



Available Crash Data - Calendar Year (CY)	CY 2018	CY 2019	CY 2020	CY 2021
Total Crashes	795	719	691	716
Fatal Crashes	3	5	3	4
Injury Crashes	247	229	229	269
Distracted Driving-Related Fatal Crashes	0	0	0	0
Percent of Distracted Driving-Related Fatal Crashes to Total Fatal Crashes	0%	0%	0%	0%
Distracted Driving-Related Injury Crashes	50	50	47	40
Percent of Distracted Driving-Related Injury Crashes to Total Injury Crashes	20%	22%	21%	15%