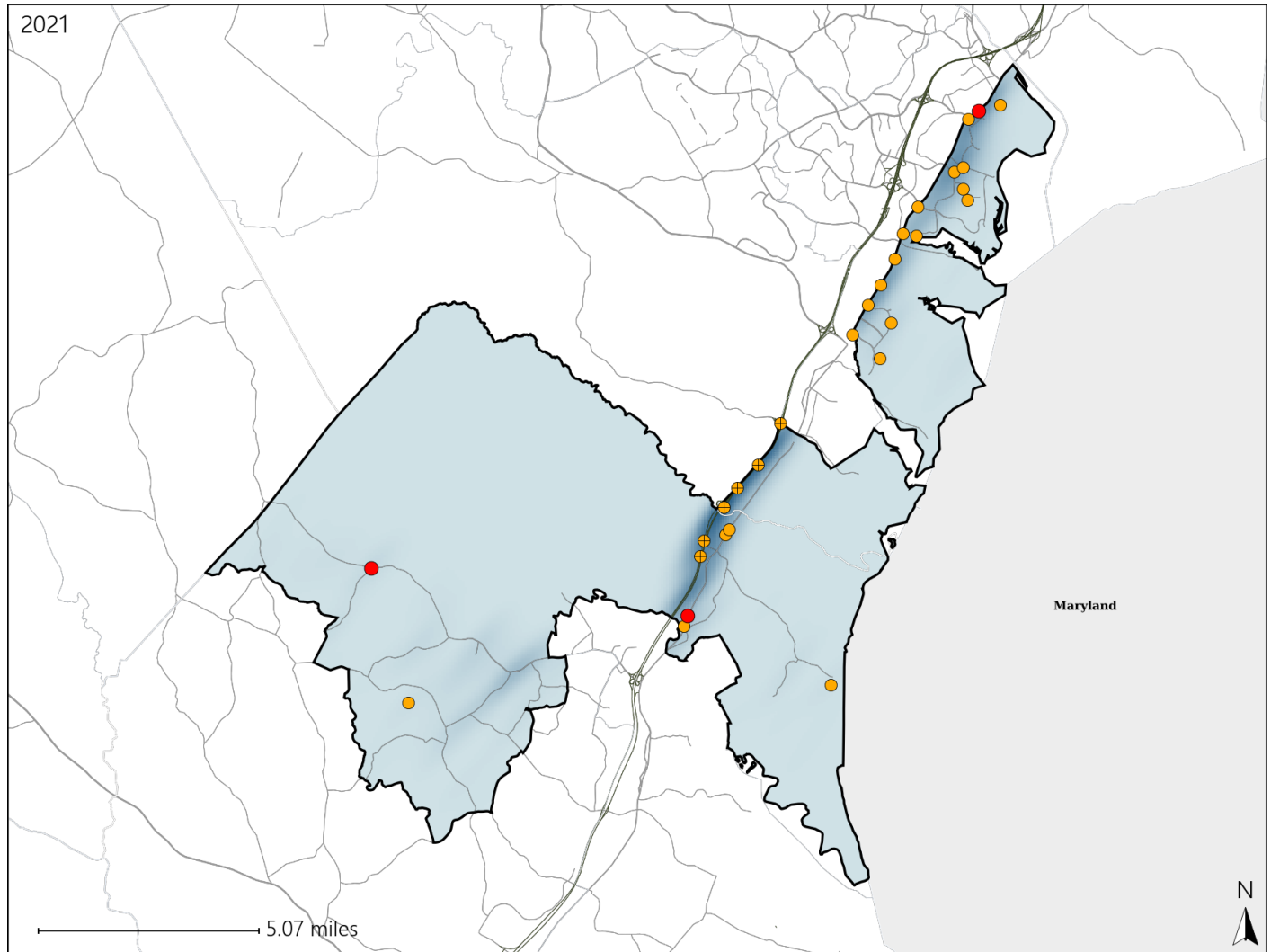


Virginia House District 2 Crash Statistics

Report Generated April, 2022

	Count	Highest Time Period(s)	Highest Day(s)	Highest Month(s)
Fatal Crashes	3	3:00am - 5:59am	Friday • Monday	April • October
Resulting Fatalities	3	6:00am - 8:59am (66%)	(66%)	(66%)
Serious Injury Crashes	26	Noon - 2:59pm (27%)	Wednesday (23%)	September (19%)



House District 2 Crashes

Interstate Crashes

- Fatal
- Serious Injury

Non-interstate Crashes

- Fatal
- Serious Injury

The blue gradient represents the density of all crashes.



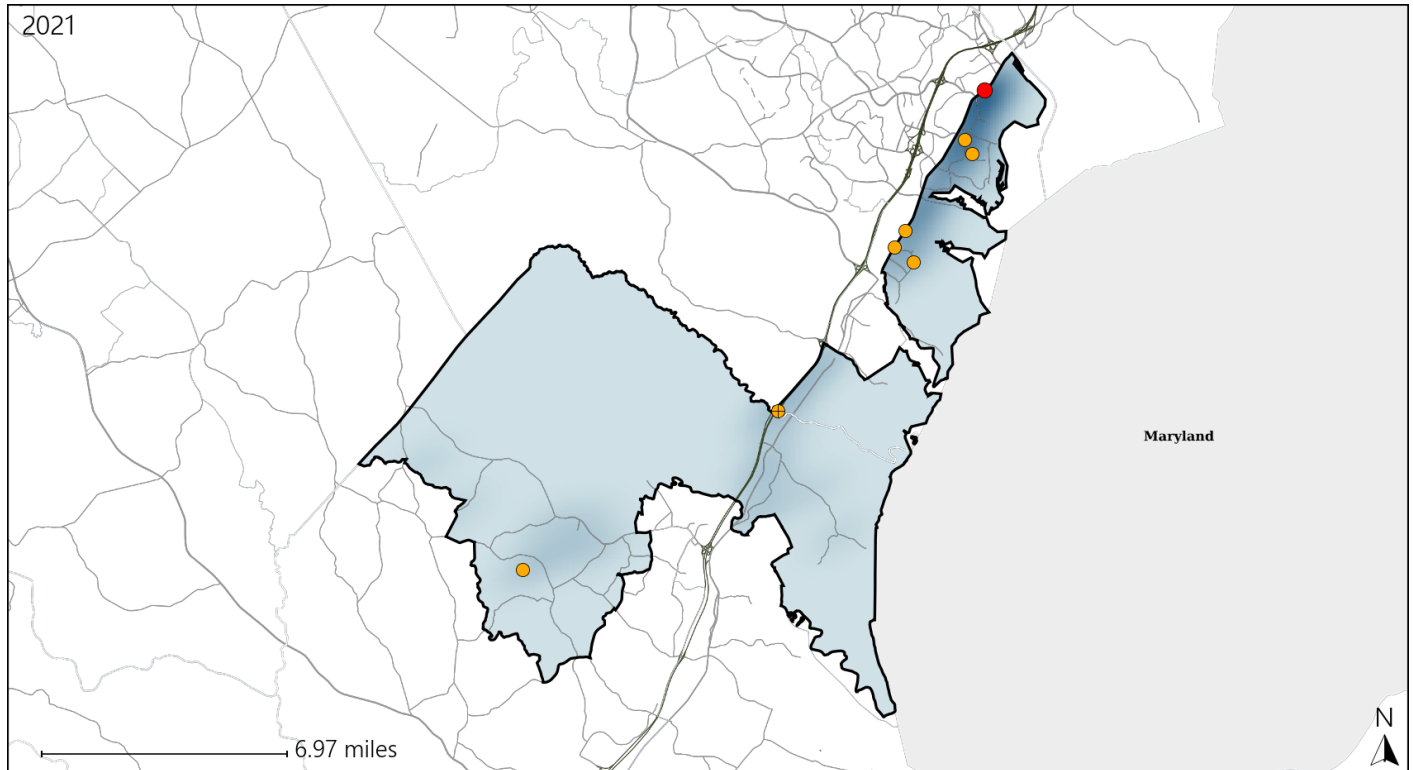
Available Crash Data - Calendar Year (CY)	CY 2018	CY 2019	CY 2020	CY 2021
Total Crashes	799	838	599	780
Fatal Crashes	3	3	5	3
Injury Crashes	221	252	154	224

Report of Crashes for January 1st - December 31st, 2021

Virginia House District 2 Alcohol Crash Statistics

Report Generated April, 2022

	Count	Highest Time Period(s)	Highest Day(s)	Highest Month(s)
Fatal Crashes	1	6:00pm - 8:59pm	Monday	April
Resulting Fatalities	1	(100%)	(100%)	(100%)
Serious Injury Crashes	7	9:00pm - 11:59pm	Sunday • Tuesday	September
		(43%)	(58%)	(43%)



House District 2 Alcohol-Related Crashes

Interstate Crashes

Non-interstate Crashes

- Fatal
- Serious Injury

- Fatal
- Serious Injury

The blue gradient represents the density of all alcohol-related crashes.



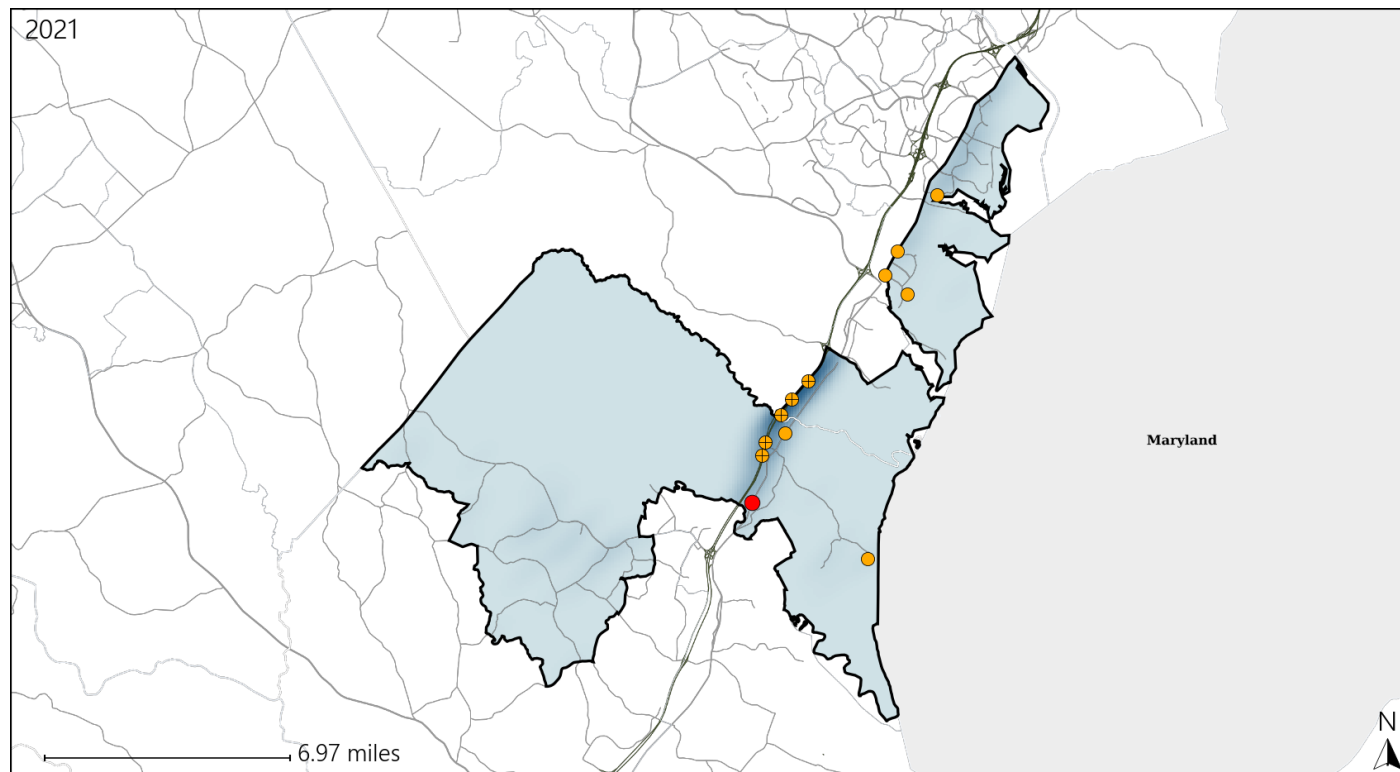
Available Crash Data - Calendar Year (CY)	CY 2018	CY 2019	CY 2020	CY 2021
Total Crashes	799	838	599	780
Fatal Crashes	3	3	5	3
Injury Crashes	221	252	154	224
Alcohol-Related Fatal Crashes	0	1	1	1
Percent of Alcohol-Related Fatal Crashes to Total Fatal Crashes	0%	33%	20%	33%
Alcohol-Related Injury Crashes	20	21	16	22
Percent of Alcohol-Related Injury Crashes to Total Injury Crashes	9%	8%	10%	10%

Report of Crashes for January 1st - December 31st, 2021

Virginia House District 2 Speed Crash Statistics

Report Generated April, 2022

	Count	Highest Time Period(s)	Highest Day(s)	Highest Month(s)
Fatal Crashes	1	3:00am - 5:59am	Thursday	September
Resulting Fatalities	1	(100%)	(100%)	(100%)
Serious Injury Crashes	11	Noon - 2:59pm	Friday • Wednesday	September
		(36%)	(54%)	(27%)



House District 2 Speed-Related Crashes

Interstate Crashes

Non-interstate Crashes

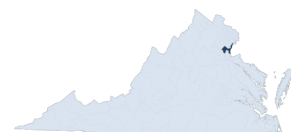
● Fatal

● Fatal

● Serious Injury

● Serious Injury

The blue gradient represents the density of all speed-related crashes.

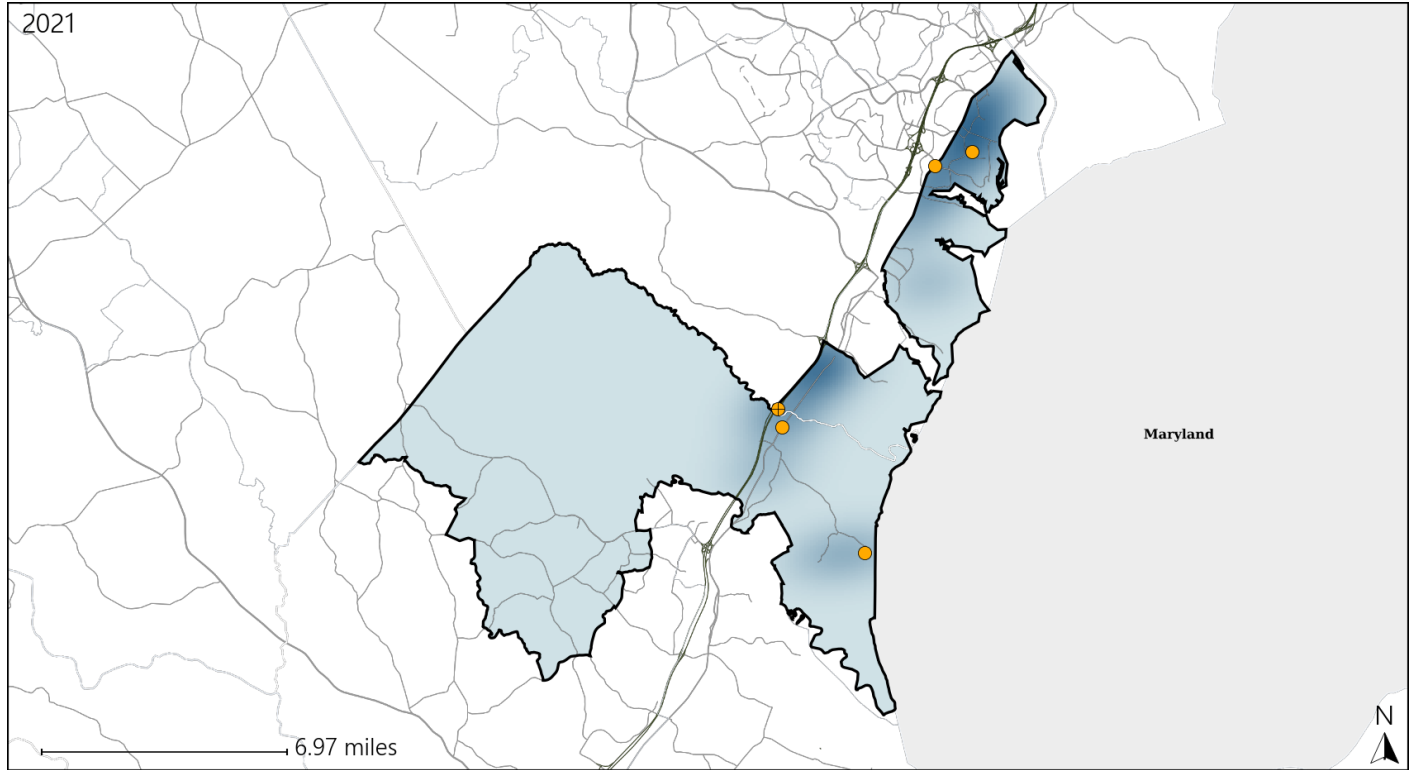


Available Crash Data - Calendar Year (CY)	CY 2018	CY 2019	CY 2020	CY 2021
Total Crashes	799	838	599	780
Fatal Crashes	3	3	5	3
Injury Crashes	221	252	154	224
Speed-Related Fatal Crashes	1	2	2	1
Percent of Speed-Related Fatal Crashes to Total Fatal Crashes	33%	67%	40%	33%
Speed-Related Injury Crashes	62	60	46	71
Percent of Speed-Related Injury Crashes to Total Injury Crashes	28%	24%	30%	32%

Virginia House District 2 Unrestrained Crash Statistics

Report Generated April, 2022

	Count	Highest Time Period(s)	Highest Day(s)	Highest Month(s)
Fatal Crashes	0	-	-	-
Unrestrained Fatalities	0	-	-	-
Serious Injury Crashes	5	Noon - 2:59pm (40%)	Friday (40%)	September (40%)



House District 2 Unrestrained-Related Crashes

Interstate Crashes

Non-interstate Crashes

- Fatal
- Serious Injury

- Fatal
- Serious Injury

The blue gradient represents the density of all unrestrained-related crashes.

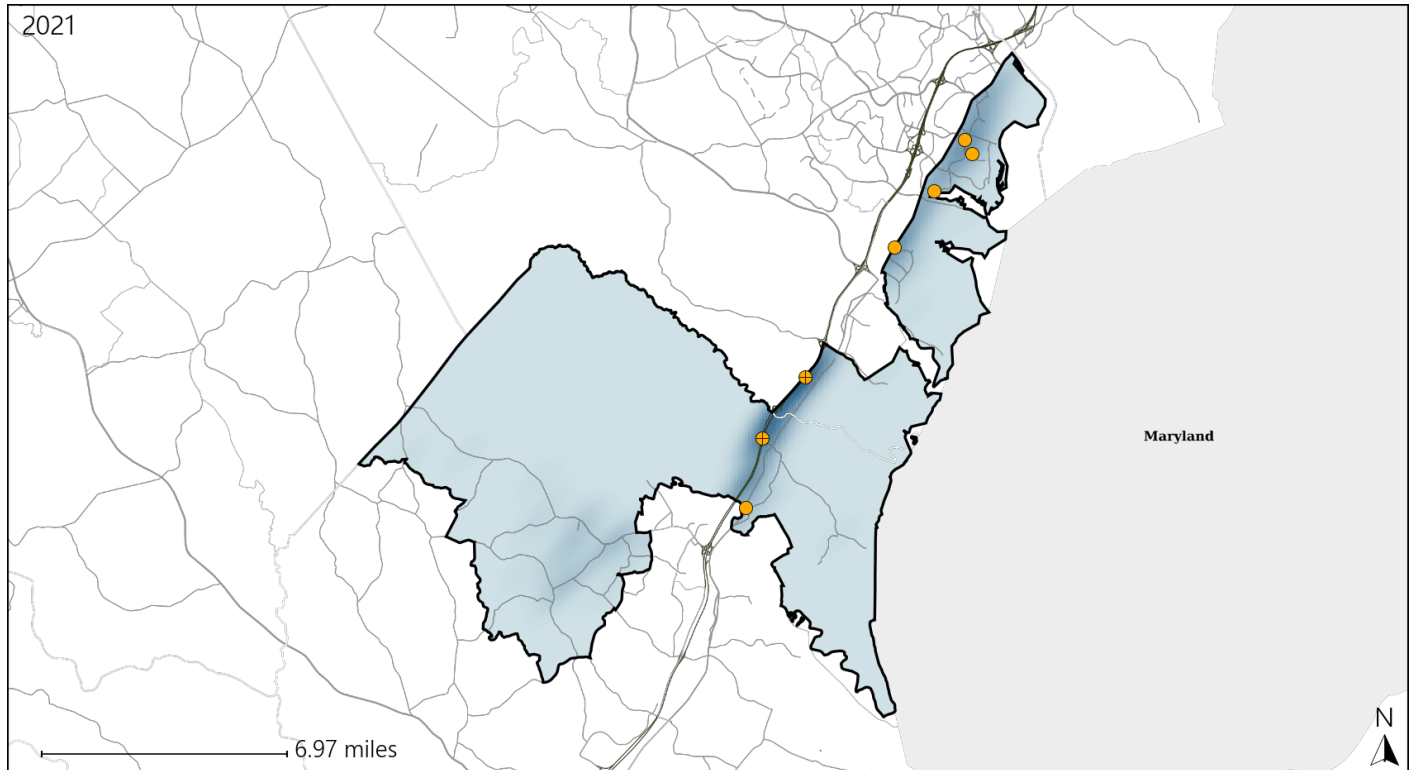


Available Crash Data - Calendar Year (CY)	CY 2018	CY 2019	CY 2020	CY 2021
Total Crashes	799	838	599	780
Fatalities	4	3	5	3
Injuries	359	421	269	354
Unrestrained Fatalities	1	1	2	0
Percent of Unrestrained Fatalities to Total Fatalities	25%	33%	40%	0%
Unrestrained Injuries	13	20	12	26
Percent of Unrestrained Injuries to Total Injuries	4%	5%	4%	7%

Virginia House District 2 Distracted Driving Crash Statistics

Report Generated April, 2022

	Count	Highest Time Period(s)	Highest Day(s)	Highest Month(s)
Fatal Crashes	0	-	-	-
Resulting Fatalities	0			
Serious Injury Crashes	7	6:00pm - 8:59pm (29%)	Wednesday (43%)	December (29%)



House District 2 Distracted Driving-Related Crashes

Interstate Crashes

Non-interstate Crashes

- Fatal
- Serious Injury

- Fatal
- Serious Injury

The blue gradient represents the density of all distracted driving-related crashes.



Available Crash Data - Calendar Year (CY)	CY 2018	CY 2019	CY 2020	CY 2021
Total Crashes	799	838	599	780
Fatal Crashes	3	3	5	3
Injury Crashes	221	252	154	224
Distracted Driving-Related Fatal Crashes	1	0	0	0
Percent of Distracted Driving-Related Fatal Crashes to Total Fatal Crashes	33%	0%	0%	0%
Distracted Driving-Related Injury Crashes	56	62	26	58
Percent of Distracted Driving-Related Injury Crashes to Total Injury Crashes	25%	25%	17%	26%