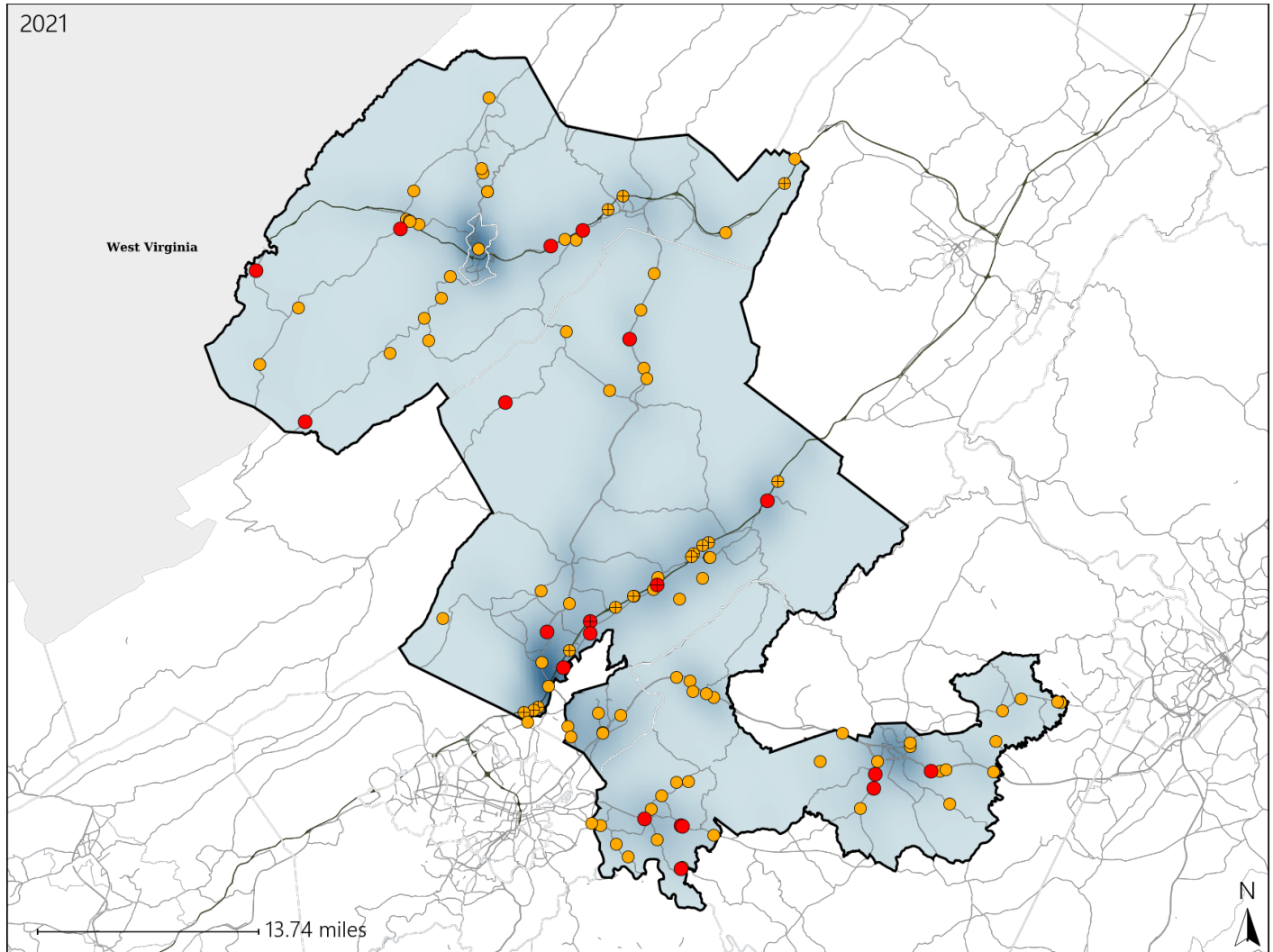


Virginia House District 19 Crash Statistics

Report Generated April, 2022

	Count	Highest Time Period(s)	Highest Day(s)	Highest Month(s)
Fatal Crashes	20	Midnight - 2:59am	Monday	August + May
Resulting Fatalities	22	(25%)	(25%)	(30%)
Serious Injury Crashes	93	3:00pm - 5:59pm	Saturday	June
		(24%)	(20%)	(14%)



House District 19 Crashes

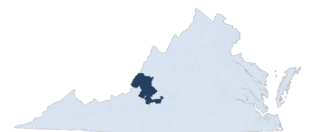
Interstate Crashes

- Fatal
- Serious Injury

Non-interstate Crashes

- Fatal
- Serious Injury

The blue gradient represents the density of all crashes.



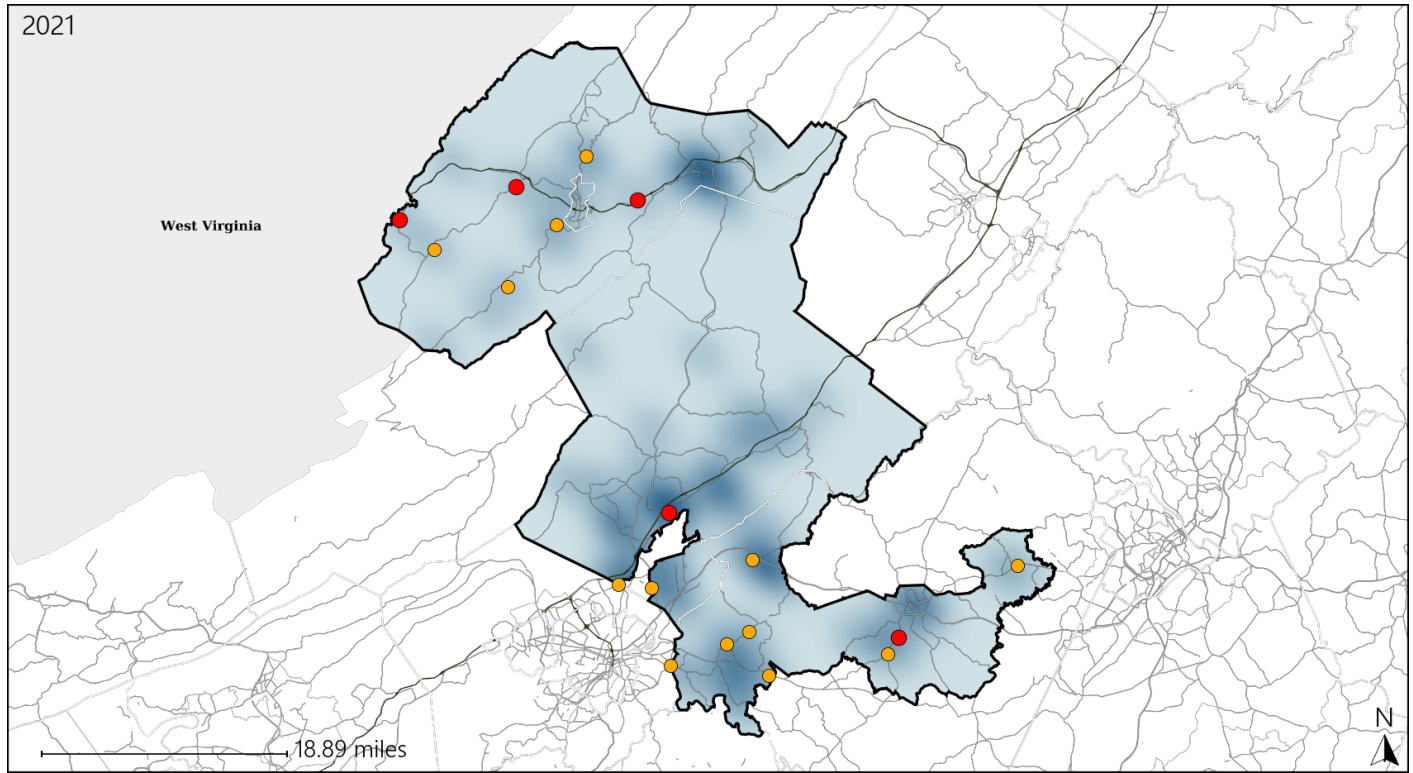
Available Crash Data - Calendar Year (CY)	CY 2018	CY 2019	CY 2020	CY 2021
Total Crashes	1577	1550	1349	1371
Fatal Crashes	16	10	8	20
Injury Crashes	422	404	352	353

Report of Crashes for January 1st - December 31st, 2021

Virginia House District 19 Alcohol Crash Statistics

Report Generated April, 2022

	Count	Highest Time Period(s)	Highest Day(s)	Highest Month(s)
Fatal Crashes	5	9:00pm - 11:59pm	Friday • Saturday	May
Resulting Fatalities	5	Midnight - 2:59am (80%)	(80%)	(40%)
Serious Injury Crashes	13	3:00pm - 5:59pm 9:00pm - 11:59pm (62%)	Friday • Saturday (46%)	June • November (46%)



House District 19 Alcohol-Related Crashes

Interstate Crashes

Non-interstate Crashes

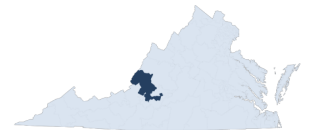
● Fatal

● Fatal

⊕ Serious Injury

⊕ Serious Injury

The blue gradient represents the density of all alcohol-related crashes.



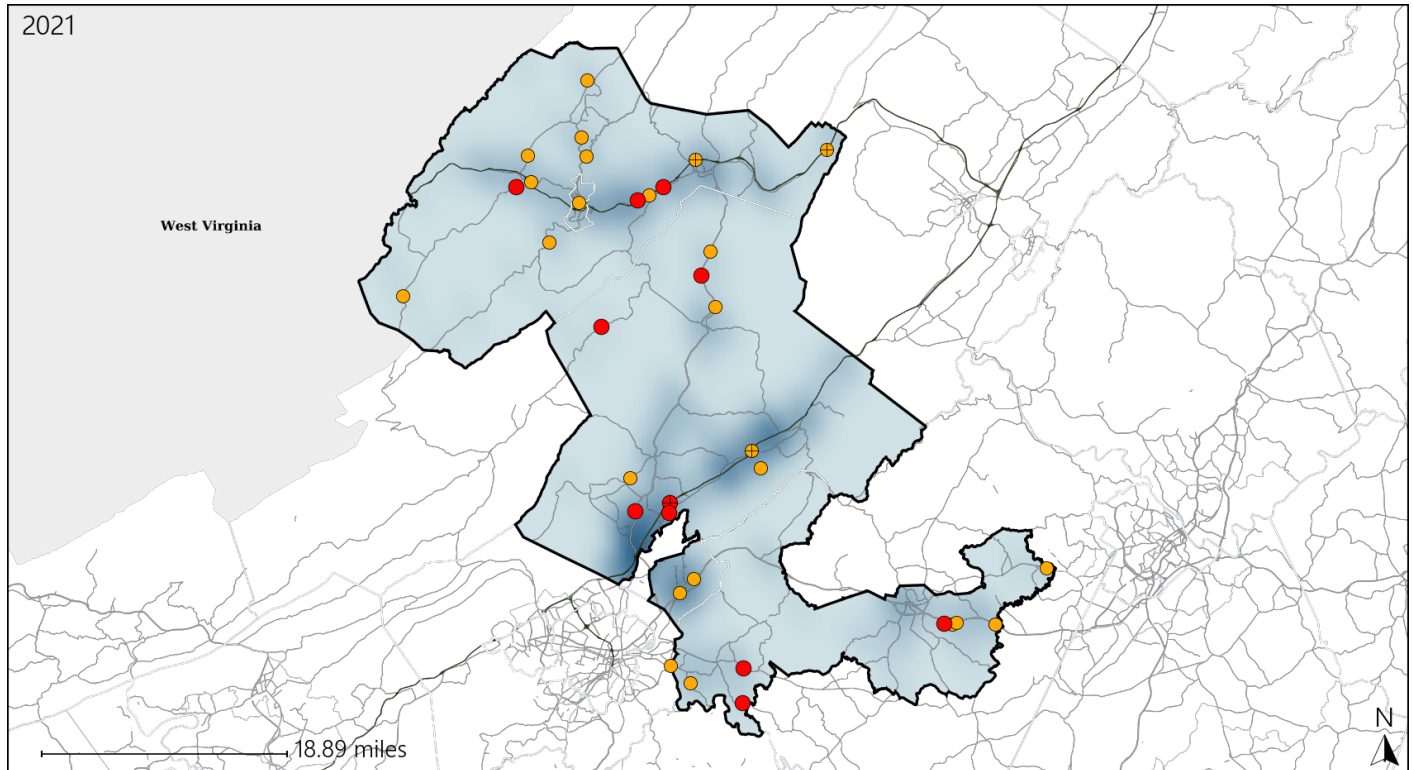
Available Crash Data - Calendar Year (CY)	CY 2018	CY 2019	CY 2020	CY 2021
Total Crashes	1577	1550	1349	1371
Fatal Crashes	16	10	8	20
Injury Crashes	422	404	352	353
Alcohol-Related Fatal Crashes	3	4	2	5
Percent of Alcohol-Related Fatal Crashes to Total Fatal Crashes	19%	40%	25%	25%
Alcohol-Related Injury Crashes	23	30	24	40
Percent of Alcohol-Related Injury Crashes to Total Injury Crashes	5%	7%	7%	11%

Report of Crashes for January 1st - December 31st, 2021

Virginia House District 19 Speed Crash Statistics

Report Generated April, 2022

	Count	Highest Time Period(s)	Highest Day(s)	Highest Month(s)
Fatal Crashes	11	Midnight - 2:59am	Monday	August • July
Resulting Fatalities	11	(27%)	(27%)	(36%)
Serious Injury Crashes	24	Midnight - 2:59am	Friday	October
		(25%)	(21%)	(17%)



House District 19 Speed-Related Crashes

Interstate Crashes

Non-interstate Crashes

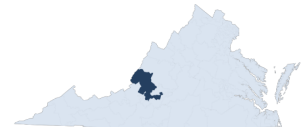
● Fatal

● Fatal

● Serious Injury

● Serious Injury

The blue gradient represents the density of all speed-related crashes.

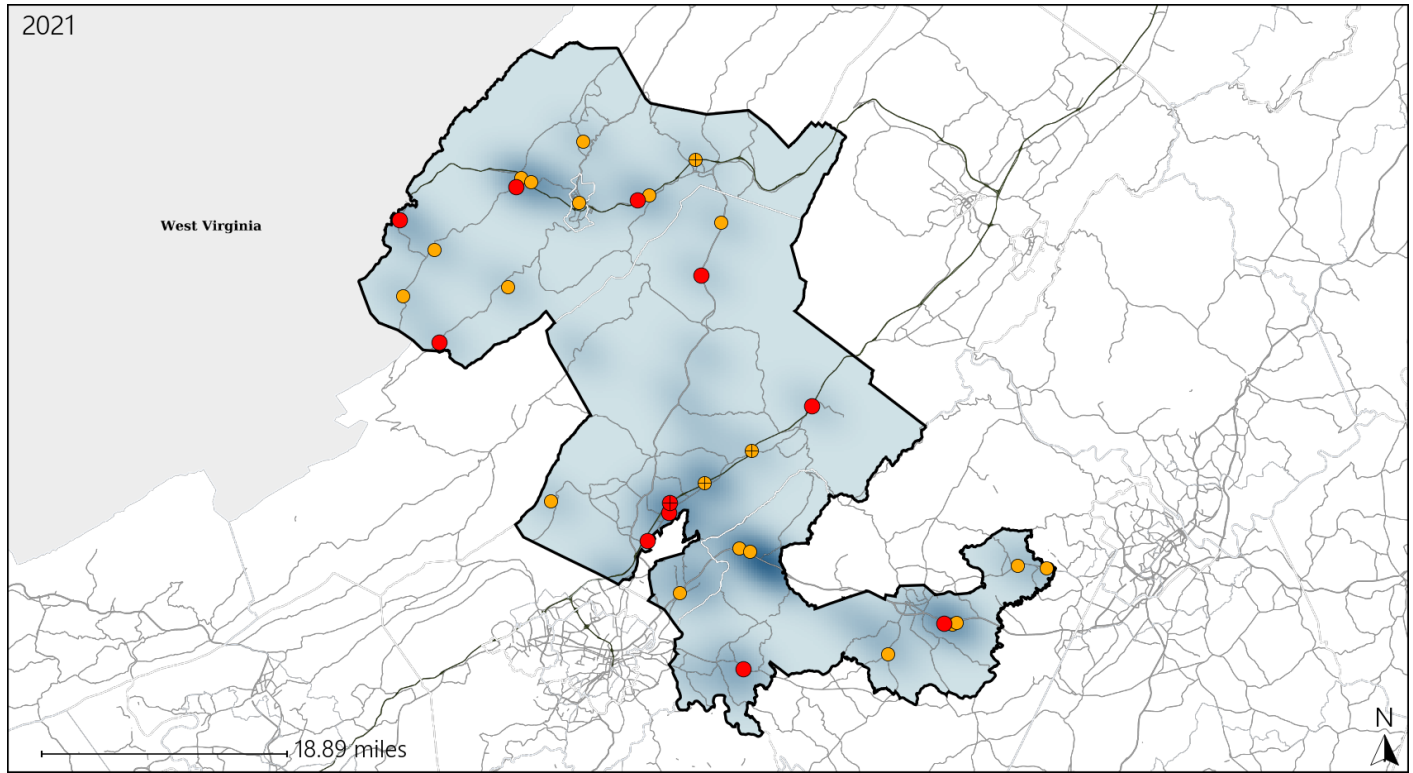


Available Crash Data - Calendar Year (CY)	CY 2018	CY 2019	CY 2020	CY 2021
Total Crashes	1577	1550	1349	1371
Fatal Crashes	16	10	8	20
Injury Crashes	422	404	352	353
Speed-Related Fatal Crashes	6	4	2	11
Percent of Speed-Related Fatal Crashes to Total Fatal Crashes	38%	40%	25%	55%
Speed-Related Injury Crashes	116	114	98	103
Percent of Speed-Related Injury Crashes to Total Injury Crashes	27%	28%	28%	29%

Virginia House District 19 Unrestrained Crash Statistics

Report Generated April, 2022

	Count	Highest Time Period(s)	Highest Day(s)	Highest Month(s)
Fatal Crashes	11	9:00pm - 11:59pm	Friday	May • September
Unrestrained Fatalities	12	Midnight - 2:59am (54%)	(27%)	(36%)
Serious Injury Crashes	21	3:00pm - 5:59pm 6:00pm - 8:59pm (38%)	Saturday (24%)	June • September (38%)



House District 19 Unrestrained-Related Crashes

Interstate Crashes

Non-interstate Crashes

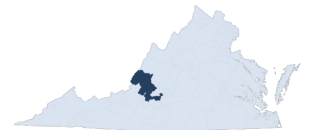
● Fatal

● Fatal

⊕ Serious Injury

● Serious Injury

The blue gradient represents the density of all unrestrained-related crashes.

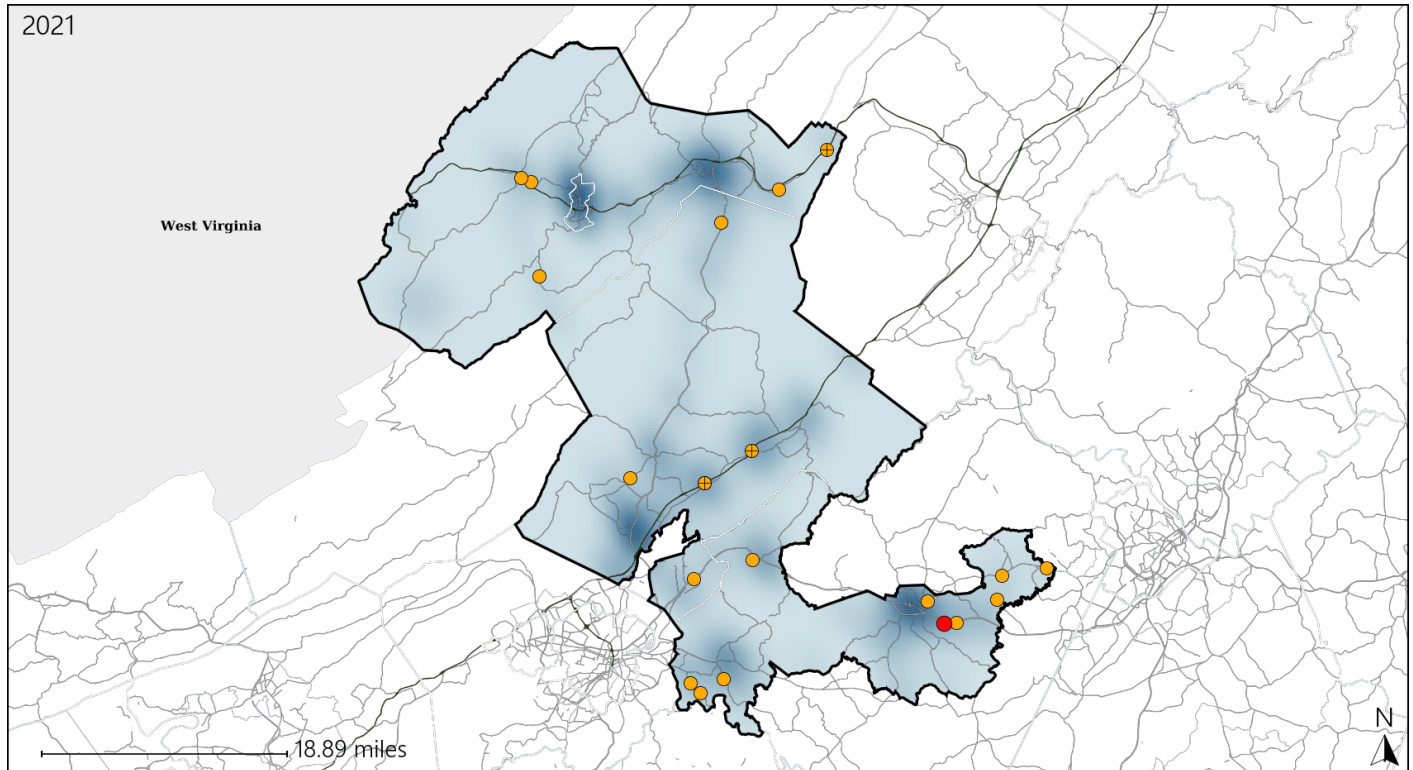


Available Crash Data - Calendar Year (CY)	CY 2018	CY 2019	CY 2020	CY 2021
Total Crashes	1577	1550	1349	1371
Fatalities	18	10	9	22
Injuries	584	561	474	508
Unrestrained Fatalities	5	6	2	12
Percent of Unrestrained Fatalities to Total Fatalities	28%	60%	22%	55%
Unrestrained Injuries	48	41	56	54
Percent of Unrestrained Injuries to Total Injuries	8%	7%	12%	11%

Virginia House District 19 Distracted Driving Crash Statistics

Report Generated April, 2022

	Count	Highest Time Period(s)	Highest Day(s)	Highest Month(s)
Fatal Crashes	1	Midnight - 2:59am	Thursday	November
Resulting Fatalities	1	(100%)	(100%)	(100%)
Serious Injury Crashes	20	Noon - 2:59pm	Friday	August - June
		(35%)	(30%)	(30%)



House District 19 Distracted Driving-Related Crashes

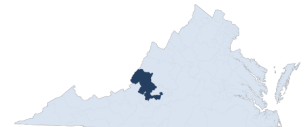
Interstate Crashes

Non-interstate Crashes

- Fatal
- Serious Injury

- Fatal
- Serious Injury

The blue gradient represents the density of all distracted driving-related crashes.



Available Crash Data - Calendar Year (CY)	CY 2018	CY 2019	CY 2020	CY 2021
Total Crashes	1577	1550	1349	1371
Fatal Crashes	16	10	8	20
Injury Crashes	422	404	352	353
Distracted Driving-Related Fatal Crashes	1	2	4	1
Percent of Distracted Driving-Related Fatal Crashes to Total Fatal Crashes	6%	20%	50%	5%
Distracted Driving-Related Injury Crashes	78	82	62	64
Percent of Distracted Driving-Related Injury Crashes to Total Injury Crashes	18%	20%	18%	18%