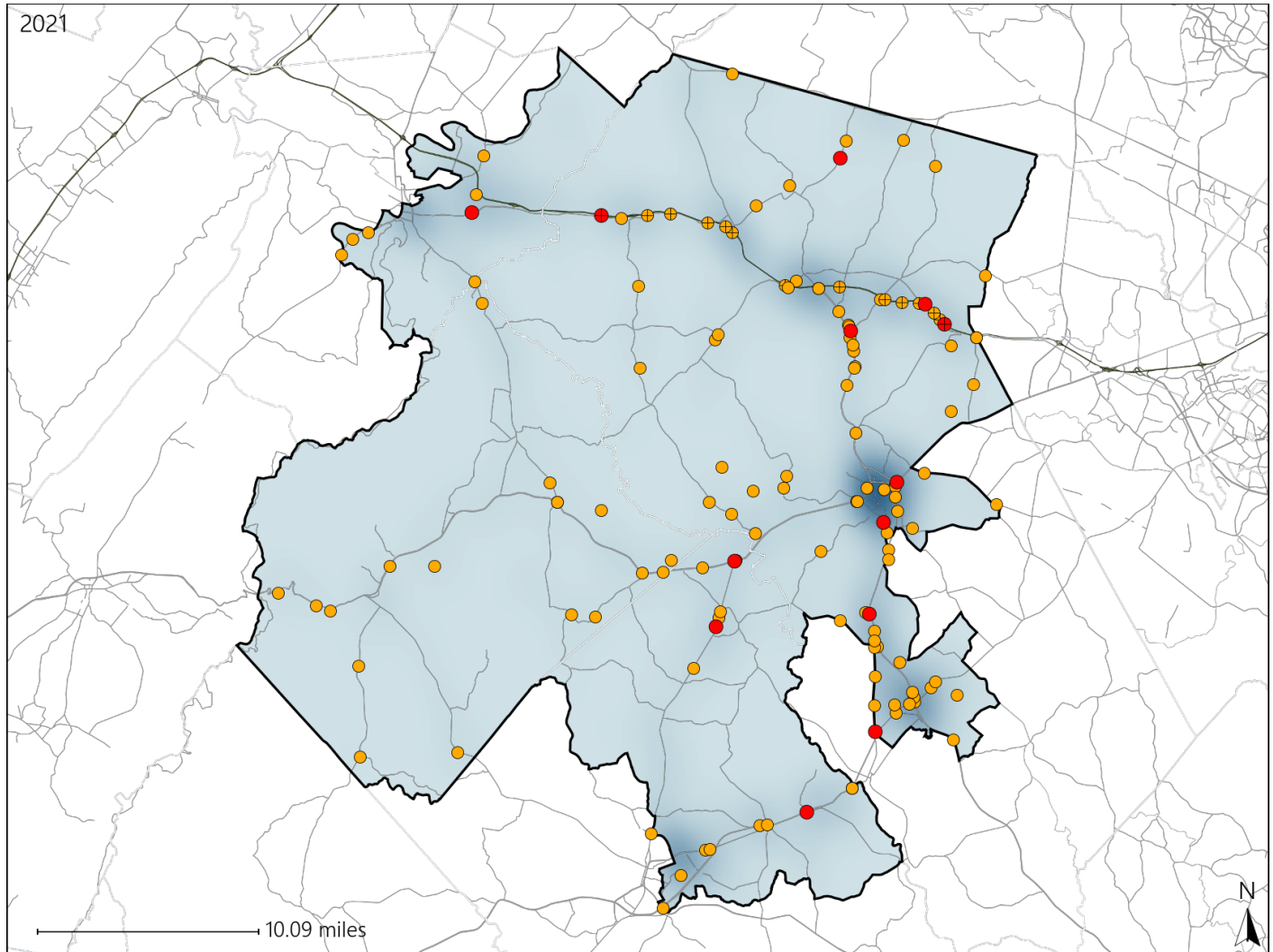


Virginia House District 18 Crash Statistics

Report Generated April, 2022

	Count	Highest Time Period(s)	Highest Day(s)	Highest Month(s)
Fatal Crashes	13	Noon - 2:59pm (31%)	Saturday • Sunday (46%)	April (23%)
Resulting Fatalities	14			
Serious Injury Crashes	125	3:00pm - 5:59pm (26%)	Saturday (18%)	September (14%)



House District 18 Crashes

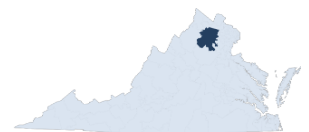
Interstate Crashes

- Fatal
- Serious Injury

Non-interstate Crashes

- Fatal
- Serious Injury

The blue gradient represents the density of all crashes.



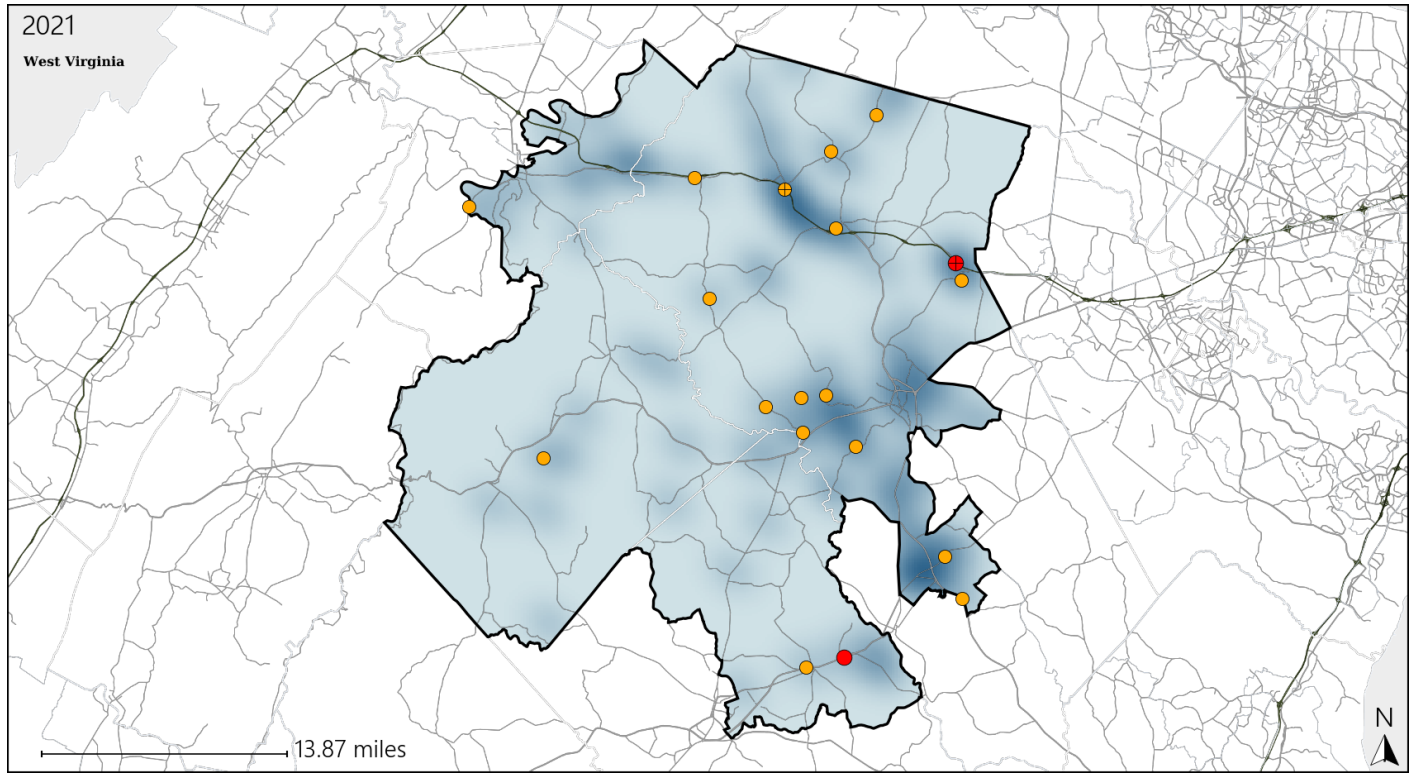
Available Crash Data - Calendar Year (CY)	CY 2018	CY 2019	CY 2020	CY 2021
Total Crashes	2032	1787	1578	1669
Fatal Crashes	16	13	9	13
Injury Crashes	650	574	524	534

Report of Crashes for January 1st - December 31st, 2021

Virginia House District 18 Alcohol Crash Statistics

Report Generated April, 2022

	Count	Highest Time Period(s)	Highest Day(s)	Highest Month(s)
Fatal Crashes	2	9:00pm - 11:59pm	Sunday	April
Resulting Fatalities	3	Midnight - 2:59am (100%)	(100%)	(100%)
Serious Injury Crashes	17	3:00pm - 5:59pm 9:00pm - 11:59pm (48%)	Saturday (41%)	February (18%)



House District 18 Alcohol-Related Crashes

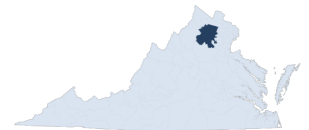
Interstate Crashes

- Fatal
- Serious Injury

Non-interstate Crashes

- Fatal
- Serious Injury

The blue gradient represents the density of all alcohol-related crashes.

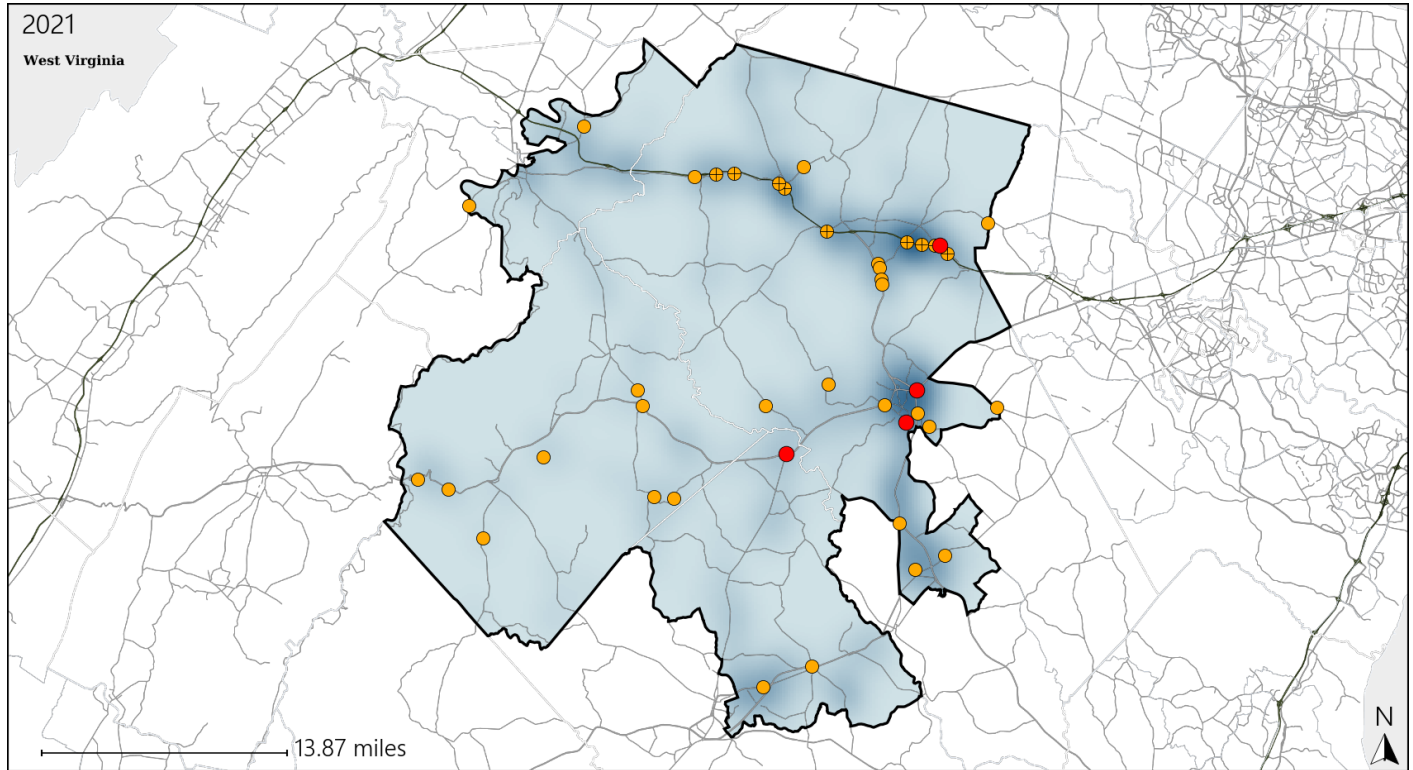


Available Crash Data - Calendar Year (CY)	CY 2018	CY 2019	CY 2020	CY 2021
Total Crashes	2032	1787	1578	1669
Fatal Crashes	16	13	9	13
Injury Crashes	650	574	524	534
Alcohol-Related Fatal Crashes	3	3	2	2
Percent of Alcohol-Related Fatal Crashes to Total Fatal Crashes	19%	23%	22%	15%
Alcohol-Related Injury Crashes	60	54	48	48
Percent of Alcohol-Related Injury Crashes to Total Injury Crashes	9%	9%	9%	9%

Virginia House District 18 Speed Crash Statistics

Report Generated April, 2022

	Count	Highest Time Period(s)	Highest Day(s)	Highest Month(s)
Fatal Crashes	4	6:00am - 8:59am	Friday • Monday	November
Resulting Fatalities	4	6:00pm - 8:59pm (50%)	(50%)	(50%)
Serious Injury Crashes	37	6:00pm - 8:59pm (22%)	Saturday (27%)	September (22%)



House District 18 Speed-Related Crashes

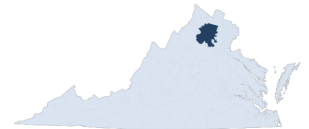
Interstate Crashes

Non-interstate Crashes

- Fatal
- Serious Injury

- Fatal
- Serious Injury

The blue gradient represents the density of all speed-related crashes.

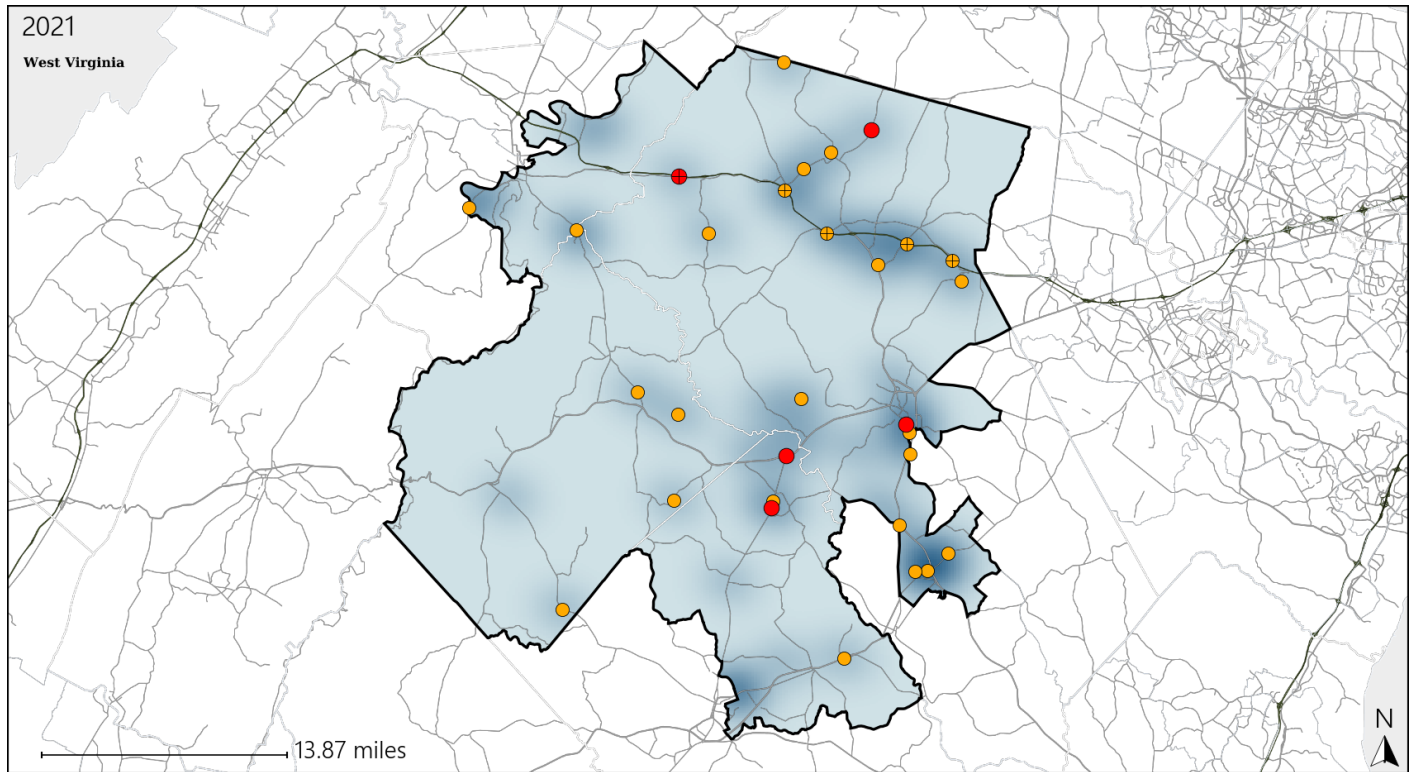


Available Crash Data - Calendar Year (CY)	CY 2018	CY 2019	CY 2020	CY 2021
Total Crashes	2032	1787	1578	1669
Fatal Crashes	16	13	9	13
Injury Crashes	650	574	524	534
Speed-Related Fatal Crashes	8	3	4	4
Percent of Speed-Related Fatal Crashes to Total Fatal Crashes	50%	23%	44%	31%
Speed-Related Injury Crashes	166	139	142	134
Percent of Speed-Related Injury Crashes to Total Injury Crashes	26%	24%	27%	25%

Virginia House District 18 Unrestrained Crash Statistics

Report Generated April, 2022

	Count	Highest Time Period(s)	Highest Day(s)	Highest Month(s)
Fatal Crashes	5	6:00am - 8:59am	Saturday • Tuesday	August
Unrestrained Fatalities	5	(40%)	(80%)	(40%)
Serious Injury Crashes	25	3:00pm - 5:59pm	Sunday • Wednesday	August
		9:00pm - 11:59pm	(40%)	(20%)



House District 18 Unrestrained-Related Crashes

Interstate Crashes

Non-interstate Crashes

● Fatal

● Fatal

⊕ Serious Injury

⊕ Serious Injury

The blue gradient represents the density of all unrestrained-related crashes.

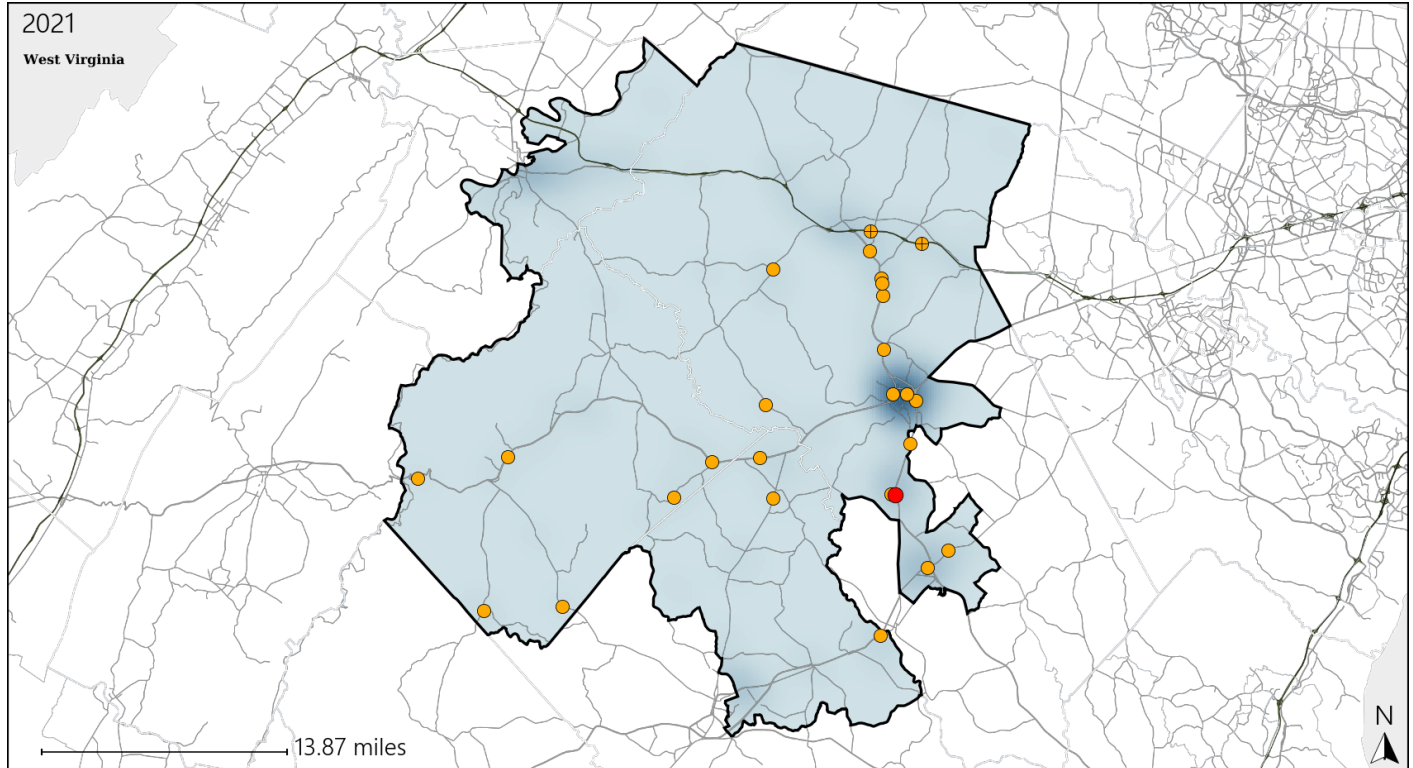


Available Crash Data - Calendar Year (CY)	CY 2018	CY 2019	CY 2020	CY 2021
Total Crashes	2032	1787	1578	1669
Fatalities	16	13	10	14
Injuries	923	832	733	787
Unrestrained Fatalities	4	5	3	5
Percent of Unrestrained Fatalities to Total Fatalities	25%	38%	30%	36%
Unrestrained Injuries	57	63	68	60
Percent of Unrestrained Injuries to Total Injuries	6%	8%	9%	8%

Virginia House District 18 Distracted Driving Crash Statistics

Report Generated April, 2022

	Count	Highest Time Period(s)	Highest Day(s)	Highest Month(s)
Fatal Crashes	1	9:00am - 11:59am	Saturday	January
Resulting Fatalities	1	(100%)	(100%)	(100%)
Serious Injury Crashes	25	9:00am - 11:59am	Sunday	November
		(24%)	(24%)	(20%)



House District 18 Distracted Driving-Related Crashes

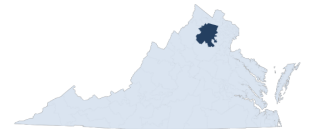
Interstate Crashes

Non-interstate Crashes

- Fatal
- Serious Injury

- Fatal
- Serious Injury

The blue gradient represents the density of all distracted driving-related crashes.



Available Crash Data - Calendar Year (CY)	CY 2018	CY 2019	CY 2020	CY 2021
Total Crashes	2032	1787	1578	1669
Fatal Crashes	16	13	9	13
Injury Crashes	650	574	524	534
Distracted Driving-Related Fatal Crashes	4	2	1	1
Percent of Distracted Driving-Related Fatal Crashes to Total Fatal Crashes	25%	15%	11%	8%
Distracted Driving-Related Injury Crashes	115	94	88	87
Percent of Distracted Driving-Related Injury Crashes to Total Injury Crashes	18%	16%	17%	16%