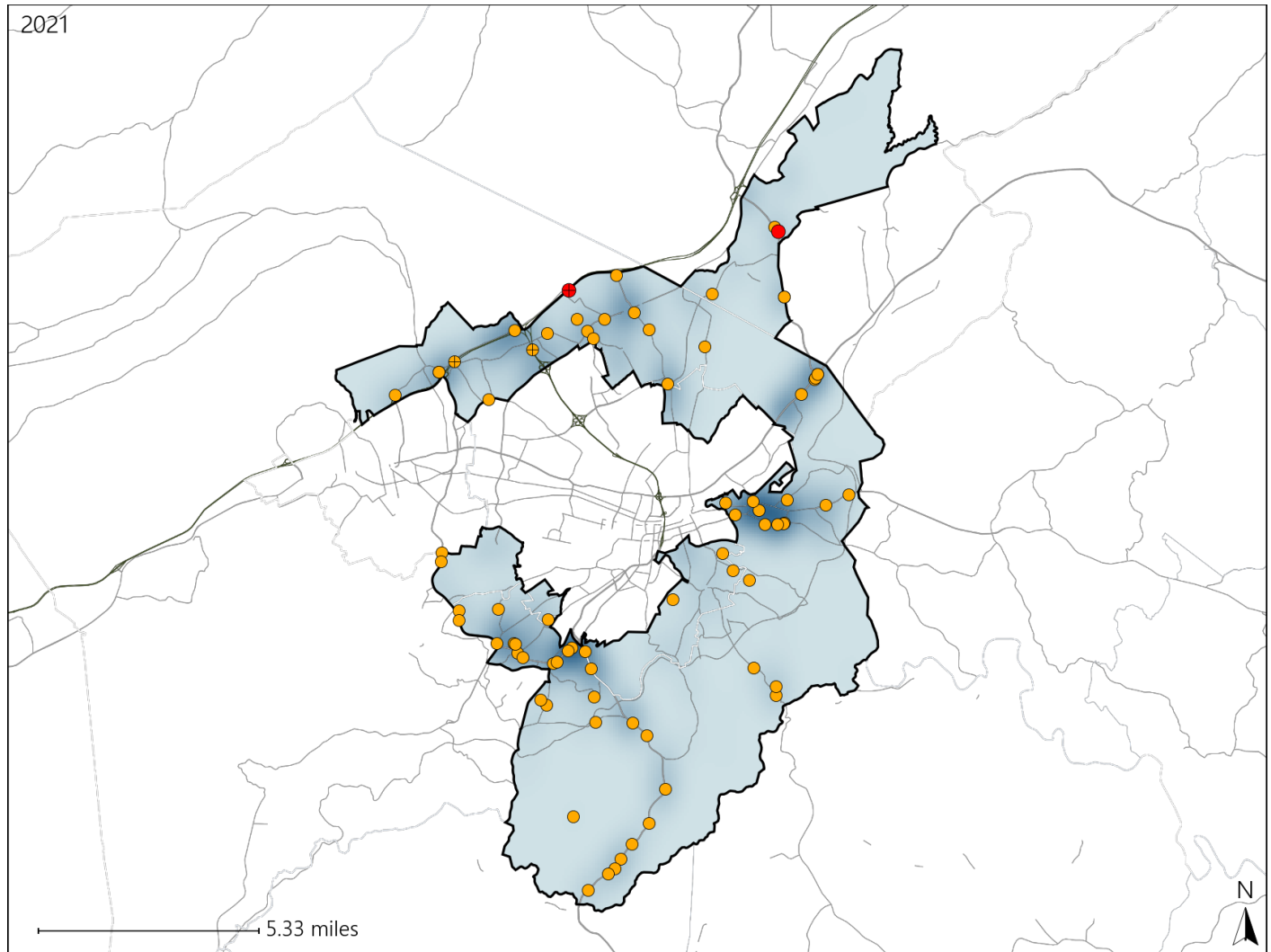


# Virginia House District 17 Crash Statistics

Report Generated April, 2022

	Count	Highest Time Period(s)	Highest Day(s)	Highest Month(s)
<b>Fatal Crashes</b>	<b>2</b>	3:00am - 5:59am	Thursday	April • September
<b>Resulting Fatalities</b>	<b>2</b>	9:00am - 11:59am (100%)	(100%)	(100%)
<b>Serious Injury Crashes</b>	<b>75</b>	3:00pm - 5:59pm (24%)	Friday (19%)	December • July (26%)



## House District 17 Crashes

Interstate Crashes

- Fatal
- Serious Injury

Non-interstate Crashes

- Fatal
- Serious Injury

The blue gradient represents the density of all crashes.

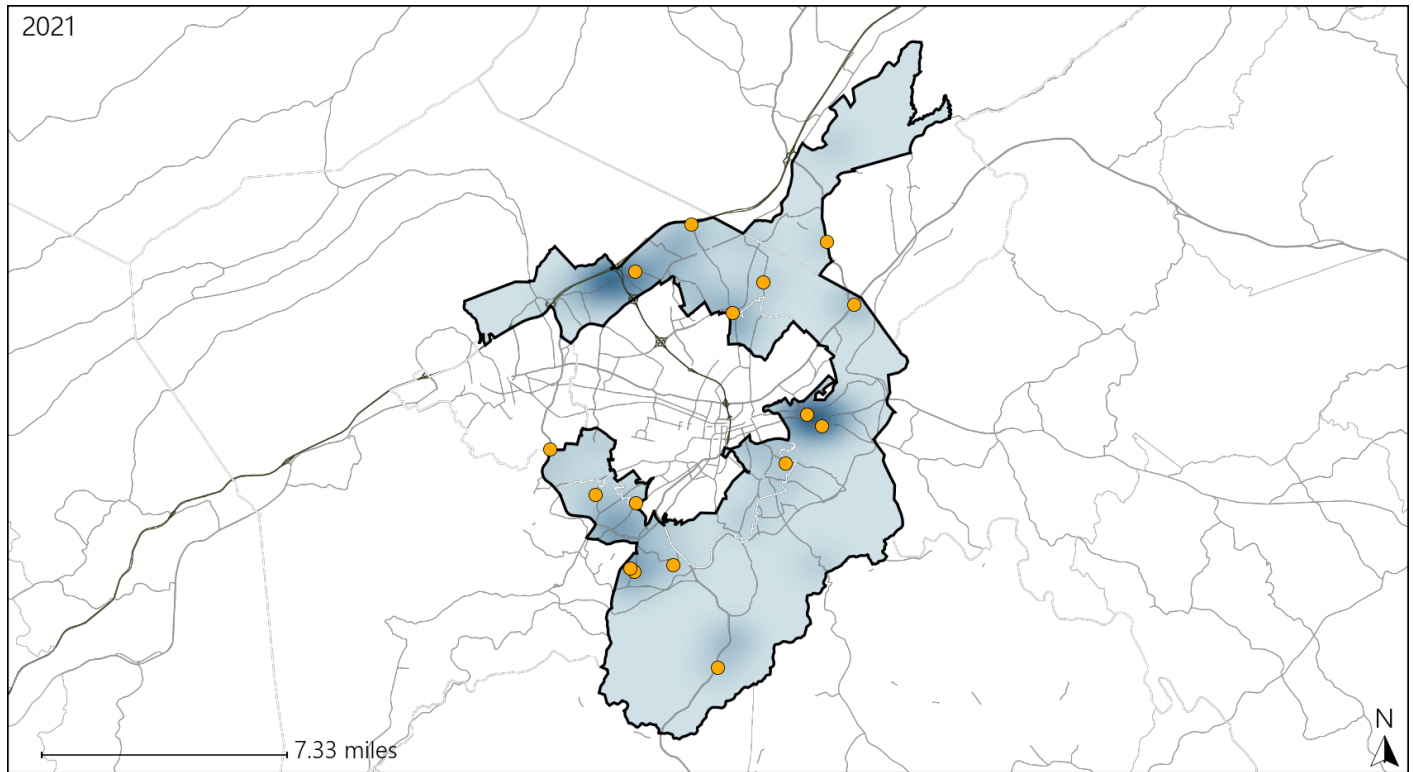


Available Crash Data - Calendar Year (CY)	CY 2018	CY 2019	CY 2020	CY 2021
Total Crashes	1118	1268	1043	1141
Fatal Crashes	2	5	7	2
Injury Crashes	338	378	309	336

# Virginia House District 17 Alcohol Crash Statistics

Report Generated April, 2022

	Count	Highest Time Period(s)	Highest Day(s)	Highest Month(s)
<b>Fatal Crashes</b>	<b>0</b>	-	-	-
<b>Resulting Fatalities</b>	<b>0</b>	-	-	-
<b>Serious Injury Crashes</b>	<b>16</b>	6:00pm - 8:59pm 9:00pm - 11:59pm (62%)	Wednesday (25%)	April + March (38%)



## House District 17 Alcohol-Related Crashes

Interstate Crashes

Non-interstate Crashes

● Fatal

● Fatal

⊕ Serious Injury

⊕ Serious Injury

The blue gradient represents the density of all alcohol-related crashes.

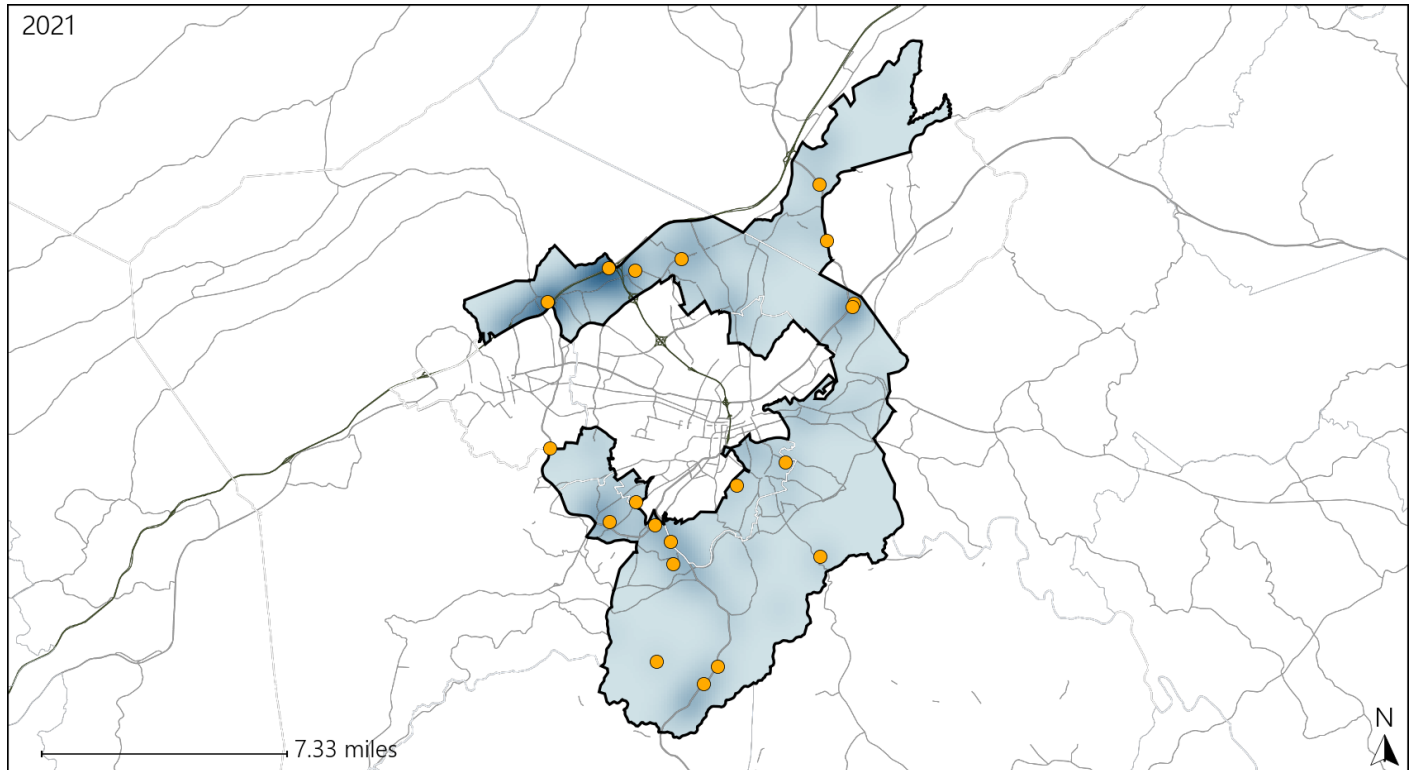


Available Crash Data - Calendar Year (CY)	CY 2018	CY 2019	CY 2020	CY 2021
Total Crashes	1118	1268	1043	1141
Fatal Crashes	2	5	7	2
Injury Crashes	338	378	309	336
Alcohol-Related Fatal Crashes	1	0	0	0
Percent of Alcohol-Related Fatal Crashes to Total Fatal Crashes	50%	0%	0%	0%
Alcohol-Related Injury Crashes	24	22	15	34
Percent of Alcohol-Related Injury Crashes to Total Injury Crashes	7%	6%	5%	10%

# Virginia House District 17 Speed Crash Statistics

Report Generated April, 2022

	Count	Highest Time Period(s)	Highest Day(s)	Highest Month(s)
<b>Fatal Crashes</b>	<b>0</b>	-	-	-
<b>Resulting Fatalities</b>	<b>0</b>			
<b>Serious Injury Crashes</b>	<b>20</b>	<b>9:00pm - 11:59pm</b> (25%)	<b>Sunday</b> (25%)	<b>June</b> (20%)



## House District 17 Speed-Related Crashes

Interstate Crashes

Non-interstate Crashes

- Fatal
- Serious Injury

- Fatal
- Serious Injury

The blue gradient represents the density of all speed-related crashes.

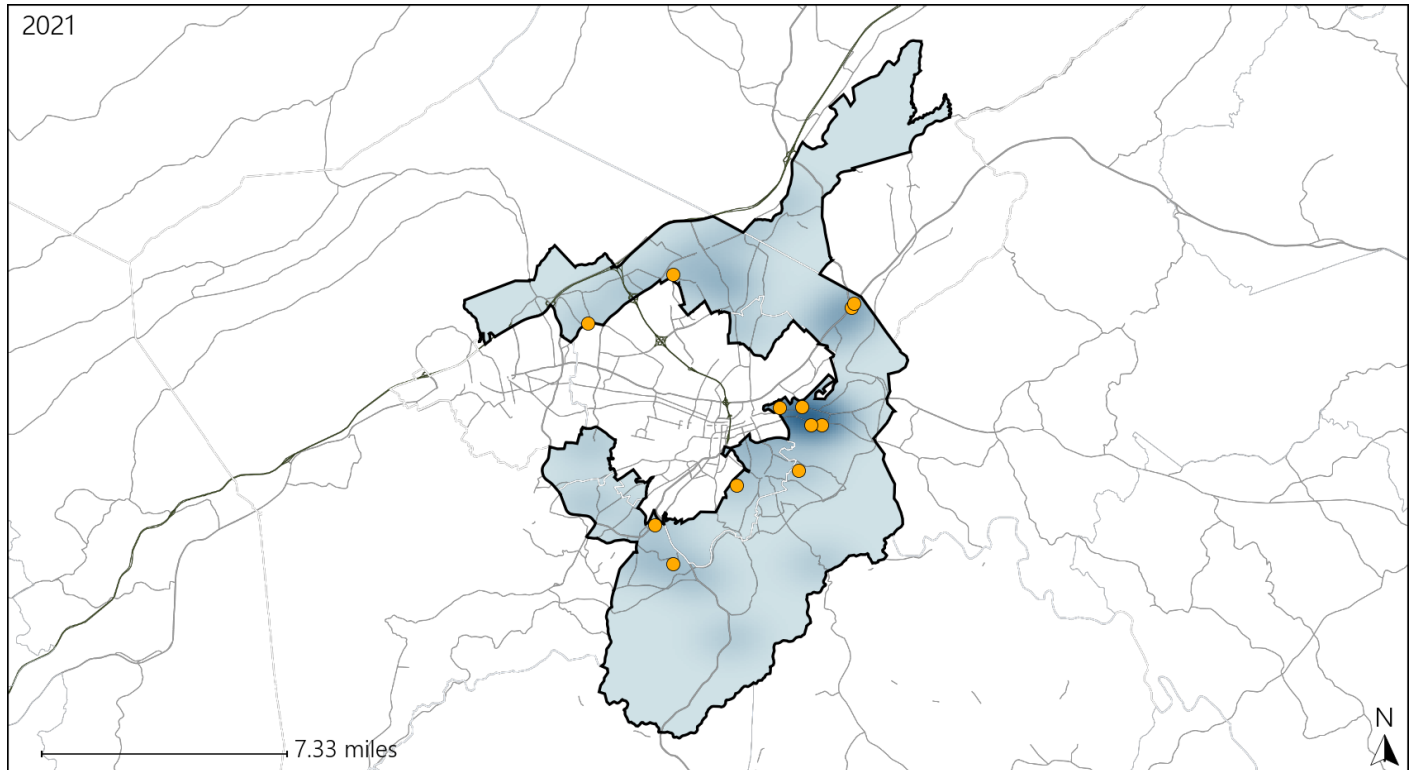


Available Crash Data - Calendar Year (CY)	CY 2018	CY 2019	CY 2020	CY 2021
Total Crashes	1118	1268	1043	1141
Fatal Crashes	2	5	7	2
Injury Crashes	338	378	309	336
Speed-Related Fatal Crashes	2	3	5	0
Percent of Speed-Related Fatal Crashes to Total Fatal Crashes	100%	60%	71%	0%
Speed-Related Injury Crashes	80	63	52	65
Percent of Speed-Related Injury Crashes to Total Injury Crashes	24%	17%	17%	19%

# Virginia House District 17 Unrestrained Crash Statistics

Report Generated April, 2022

	Count	Highest Time Period(s)	Highest Day(s)	Highest Month(s)
<b>Fatal Crashes</b>	<b>0</b>	-	-	-
<b>Unrestrained Fatalities</b>	<b>0</b>			
<b>Serious Injury Crashes</b>	<b>12</b>	<b>9:00pm - 11:59pm</b> (42%)	<b>Sunday</b> (25%)	<b>December</b> (25%)



## House District 17 Unrestrained-Related Crashes

Interstate Crashes

- Fatal
- Serious Injury

Non-interstate Crashes

- Fatal
- Serious Injury

The blue gradient represents the density of all unrestrained-related crashes.

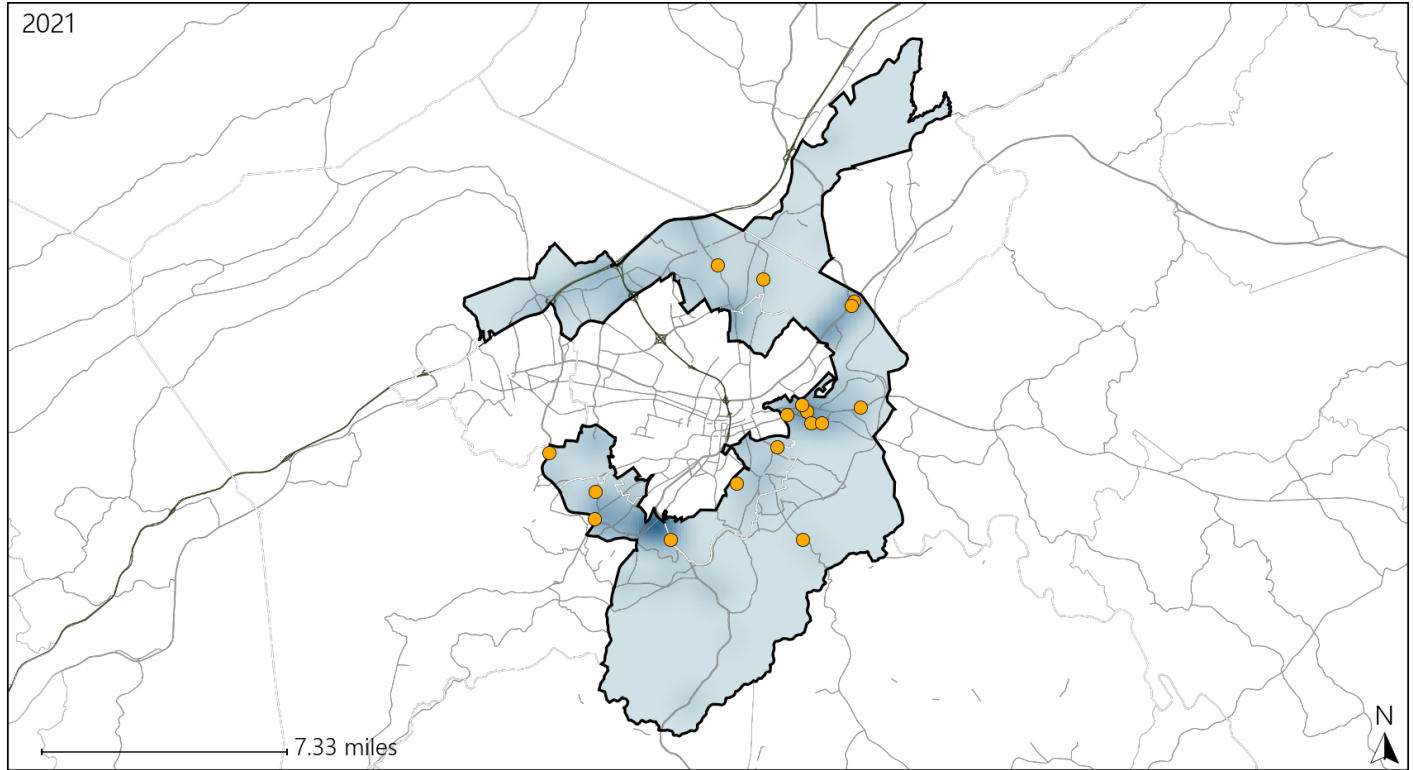


Available Crash Data - Calendar Year (CY)	CY 2018	CY 2019	CY 2020	CY 2021
Total Crashes	1118	1268	1043	1141
Fatalities	3	5	7	2
Injuries	466	508	409	477
Unrestrained Fatalities	3	0	0	0
Percent of Unrestrained Fatalities to Total Fatalities	100%	0%	0%	0%
Unrestrained Injuries	24	8	19	40
Percent of Unrestrained Injuries to Total Injuries	5%	2%	5%	8%

# Virginia House District 17 Distracted Driving Crash Statistics

Report Generated April, 2022

	Count	Highest Time Period(s)	Highest Day(s)	Highest Month(s)
<b>Fatal Crashes</b>	<b>0</b>	-	-	-
<b>Resulting Fatalities</b>	<b>0</b>			
<b>Serious Injury Crashes</b>	<b>17</b>	<b>9:00pm - 11:59pm</b> (29%)	<b>Tuesday</b> (35%)	<b>April • February</b> (36%)



## House District 17 Distracted Driving-Related Crashes

Interstate Crashes

Non-interstate Crashes

- Fatal
- Serious Injury

- Fatal
- Serious Injury

The blue gradient represents the density of all distracted driving-related crashes.



Available Crash Data - Calendar Year (CY)	CY 2018	CY 2019	CY 2020	CY 2021
Total Crashes	1118	1268	1043	1141
Fatal Crashes	2	5	7	2
Injury Crashes	338	378	309	336
Distracted Driving-Related Fatal Crashes	0	0	1	0
Percent of Distracted Driving-Related Fatal Crashes to Total Fatal Crashes	0%	0%	14%	0%
Distracted Driving-Related Injury Crashes	78	82	59	65
Percent of Distracted Driving-Related Injury Crashes to Total Injury Crashes	23%	22%	19%	19%