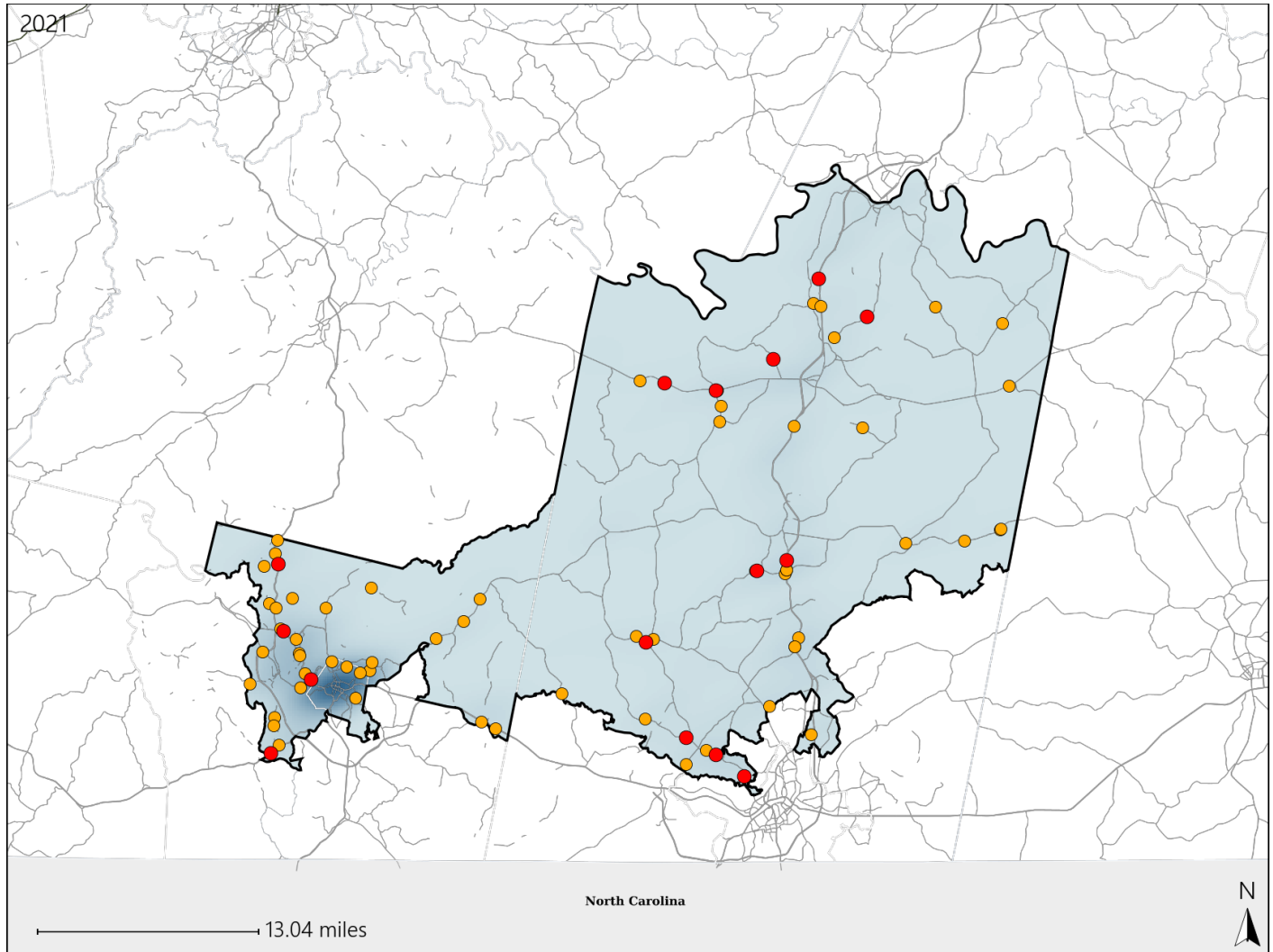


Virginia House District 16 Crash Statistics

Report Generated April, 2022

	Count	Highest Time Period(s)	Highest Day(s)	Highest Month(s)
Fatal Crashes	15	Midnight - 2:59am	Sunday	April
Resulting Fatalities	15	(33%)	(27%)	(27%)
Serious Injury Crashes	61	9:00am - 11:59am	Thursday	December • November
		(25%)	(18%)	(26%)



House District 16 Crashes

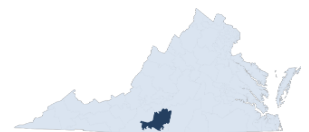
Interstate Crashes

- Fatal
- Serious Injury

Non-interstate Crashes

- Fatal
- Serious Injury

The blue gradient represents the density of all crashes.

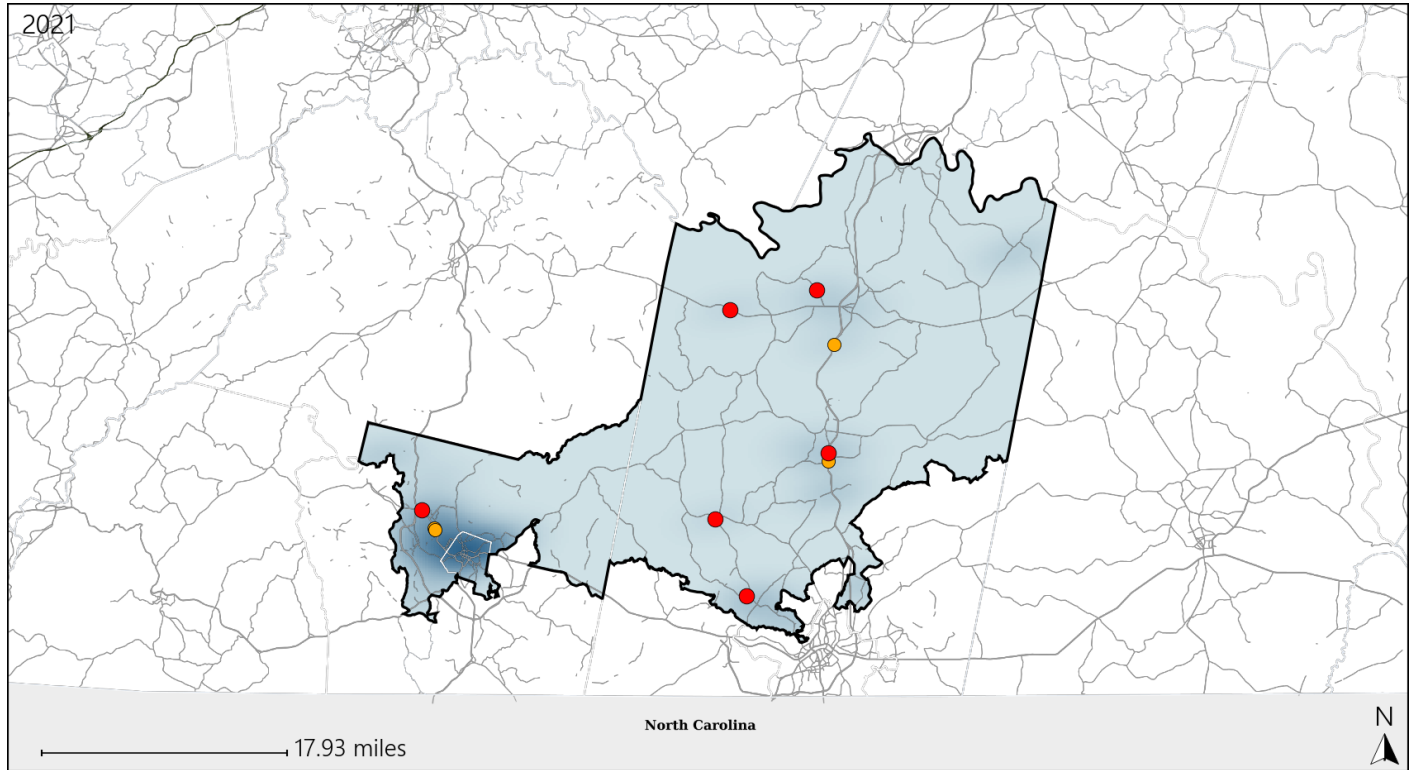


Available Crash Data - Calendar Year (CY)	CY 2018	CY 2019	CY 2020	CY 2021
Total Crashes	1171	1045	1069	1089
Fatal Crashes	19	12	19	15
Injury Crashes	395	307	321	302

Virginia House District 16 Alcohol Crash Statistics

Report Generated April, 2022

	Count	Highest Time Period(s)	Highest Day(s)	Highest Month(s)
Fatal Crashes	6	6:00pm - 8:59pm	Saturday • Sunday	April
Resulting Fatalities	6	Midnight - 2:59am (66%)	(66%)	(33%)
Serious Injury Crashes	4	9:00pm - 11:59pm (75%)	Friday • Thursday (50%)	August • December (50%)



House District 16 Alcohol-Related Crashes

Interstate Crashes

Non-interstate Crashes

- Fatal
- Serious Injury

- Fatal
- Serious Injury

The blue gradient represents the density of all alcohol-related crashes.

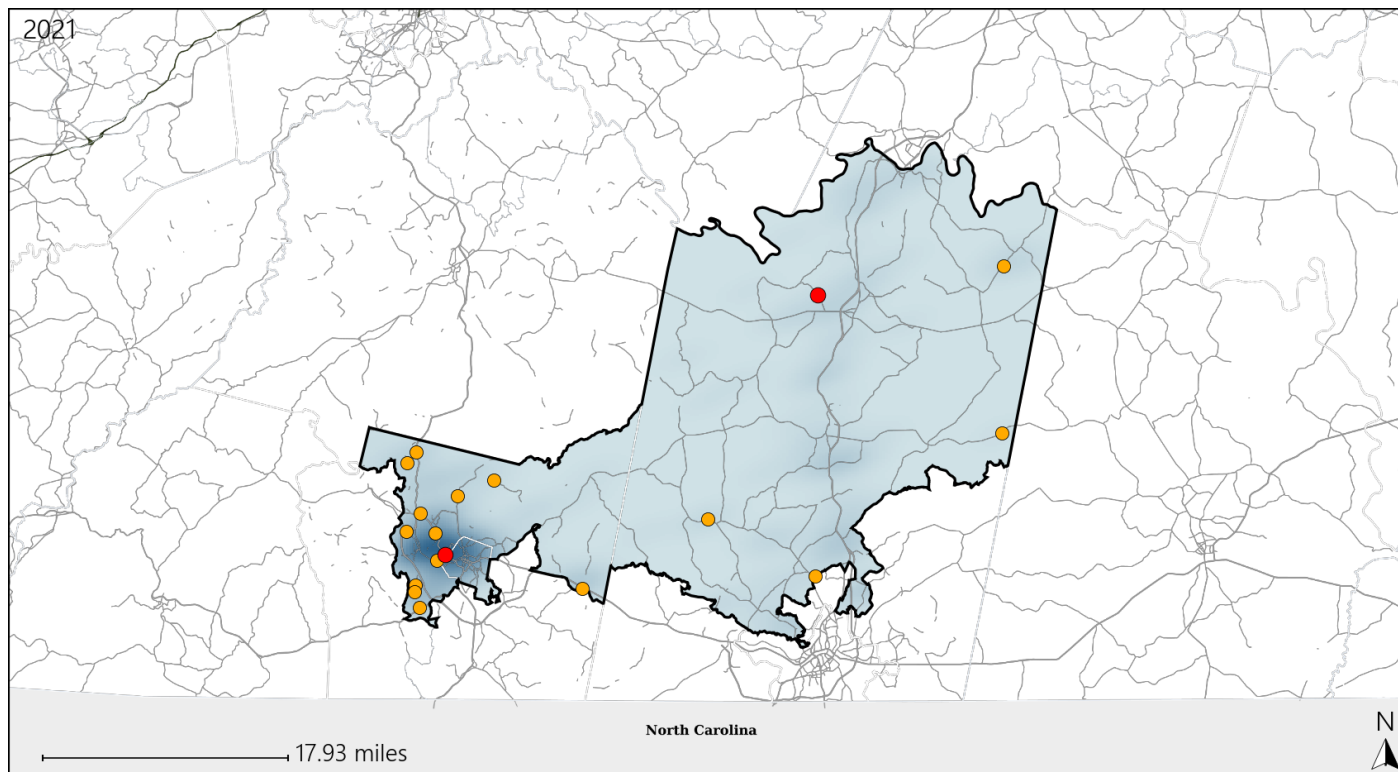


Available Crash Data - Calendar Year (CY)	CY 2018	CY 2019	CY 2020	CY 2021
Total Crashes	1171	1045	1069	1089
Fatal Crashes	19	12	19	15
Injury Crashes	395	307	321	302
Alcohol-Related Fatal Crashes	7	3	7	6
Percent of Alcohol-Related Fatal Crashes to Total Fatal Crashes	37%	25%	37%	40%
Alcohol-Related Injury Crashes	35	26	35	16
Percent of Alcohol-Related Injury Crashes to Total Injury Crashes	9%	8%	11%	5%

Virginia House District 16 Speed Crash Statistics

Report Generated April, 2022

	Count	Highest Time Period(s)	Highest Day(s)	Highest Month(s)
Fatal Crashes	2	Midnight - 2:59am	Monday • Thursday	August • September
Resulting Fatalities	2	(100%)	(100%)	(100%)
Serious Injury Crashes	16	9:00am - 11:59am	Friday	October
		(25%)	(25%)	(19%)



House District 16 Speed-Related Crashes

Interstate Crashes

Non-interstate Crashes

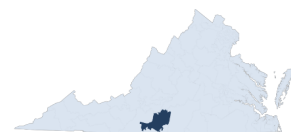
● Fatal

● Fatal

● Serious Injury

● Serious Injury

The blue gradient represents the density of all speed-related crashes.

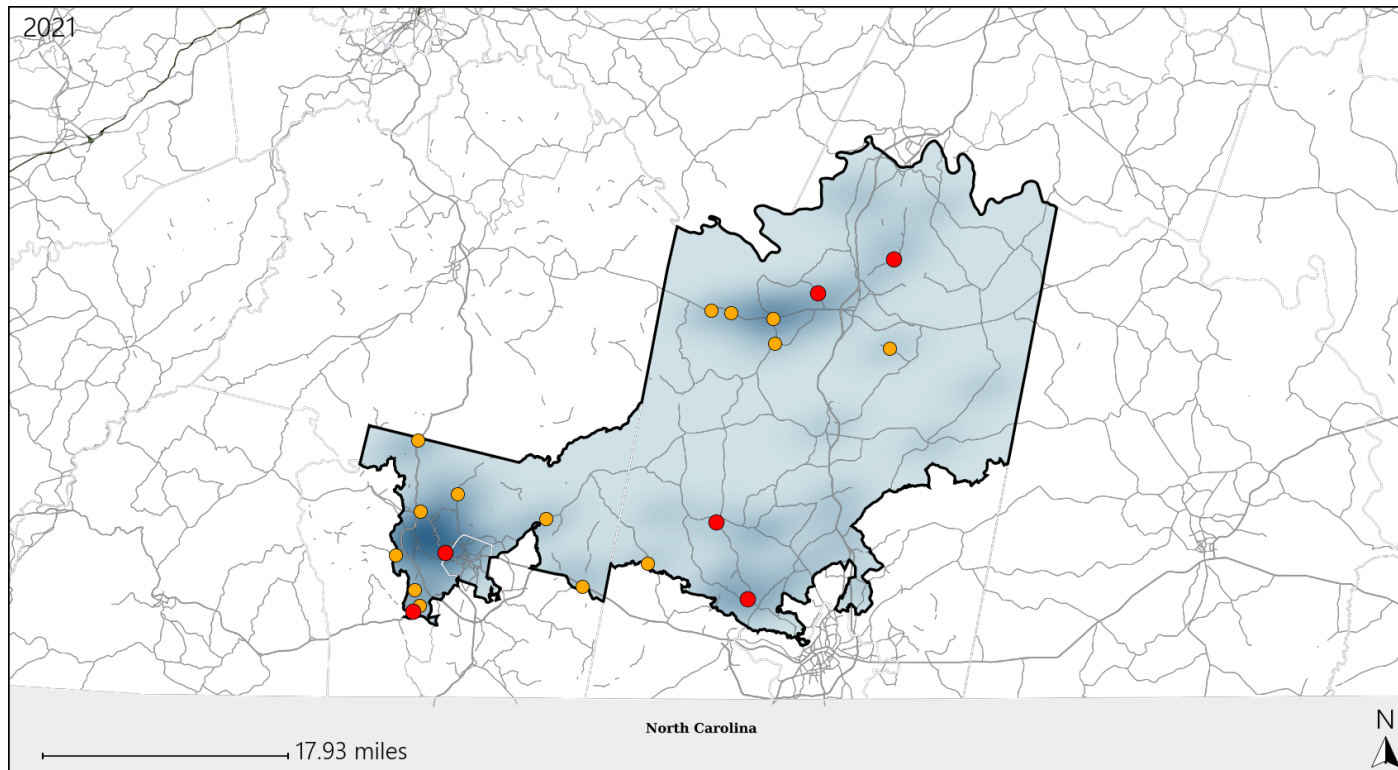


Available Crash Data - Calendar Year (CY)	CY 2018	CY 2019	CY 2020	CY 2021
Total Crashes	1171	1045	1069	1089
Fatal Crashes	19	12	19	15
Injury Crashes	395	307	321	302
Speed-Related Fatal Crashes	9	4	11	2
Percent of Speed-Related Fatal Crashes to Total Fatal Crashes	47%	33%	58%	13%
Speed-Related Injury Crashes	91	82	95	65
Percent of Speed-Related Injury Crashes to Total Injury Crashes	23%	27%	30%	22%

Virginia House District 16 Unrestrained Crash Statistics

Report Generated April, 2022

	Count	Highest Time Period(s)	Highest Day(s)	Highest Month(s)
Fatal Crashes	6	Midnight - 2:59am	Sunday • Thursday	April • August
Unrestrained Fatalities	6	(50%)	(66%)	(34%)
Serious Injury Crashes	14	9:00am - 11:59am	Friday	December • October
		(36%)	(29%)	(42%)



House District 16 Unrestrained-Related Crashes

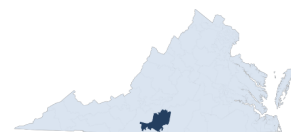
Interstate Crashes

Non-interstate Crashes

- Fatal
- Serious Injury

- Fatal
- Serious Injury

The blue gradient represents the density of all unrestrained-related crashes.

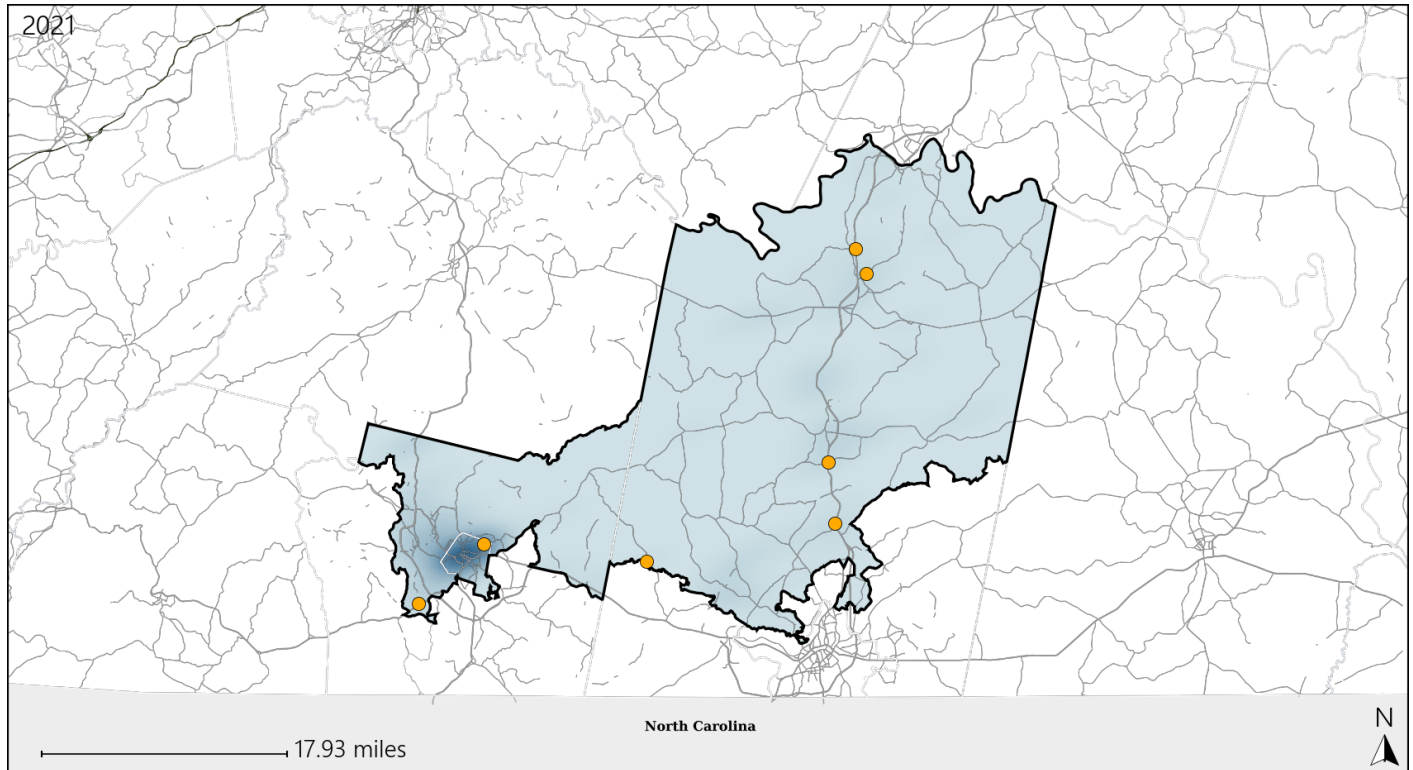


Available Crash Data - Calendar Year (CY)	CY 2018	CY 2019	CY 2020	CY 2021
Total Crashes	1171	1045	1069	1089
Fatalities	19	13	20	15
Injuries	584	448	458	423
Unrestrained Fatalities	12	4	9	6
Percent of Unrestrained Fatalities to Total Fatalities	63%	31%	45%	40%
Unrestrained Injuries	69	51	73	67
Percent of Unrestrained Injuries to Total Injuries	12%	11%	16%	16%

Virginia House District 16 Distracted Driving Crash Statistics

Report Generated April, 2022

	Count	Highest Time Period(s)	Highest Day(s)	Highest Month(s)
Fatal Crashes	0	-	-	-
Resulting Fatalities	0	-	-	-
Serious Injury Crashes	7	9:00pm - 11:59pm (43%)	Thursday (43%)	June • November (58%)



House District 16 Distracted Driving-Related Crashes

Interstate Crashes

Non-interstate Crashes

- Fatal
- Serious Injury

- Fatal
- Serious Injury

The blue gradient represents the density of all distracted driving-related crashes.



Available Crash Data - Calendar Year (CY)	CY 2018	CY 2019	CY 2020	CY 2021
Total Crashes	1171	1045	1069	1089
Fatal Crashes	19	12	19	15
Injury Crashes	395	307	321	302
Distracted Driving-Related Fatal Crashes	1	1	2	0
Percent of Distracted Driving-Related Fatal Crashes to Total Fatal Crashes	5%	8%	11%	0%
Distracted Driving-Related Injury Crashes	54	45	30	36
Percent of Distracted Driving-Related Injury Crashes to Total Injury Crashes	14%	15%	9%	12%