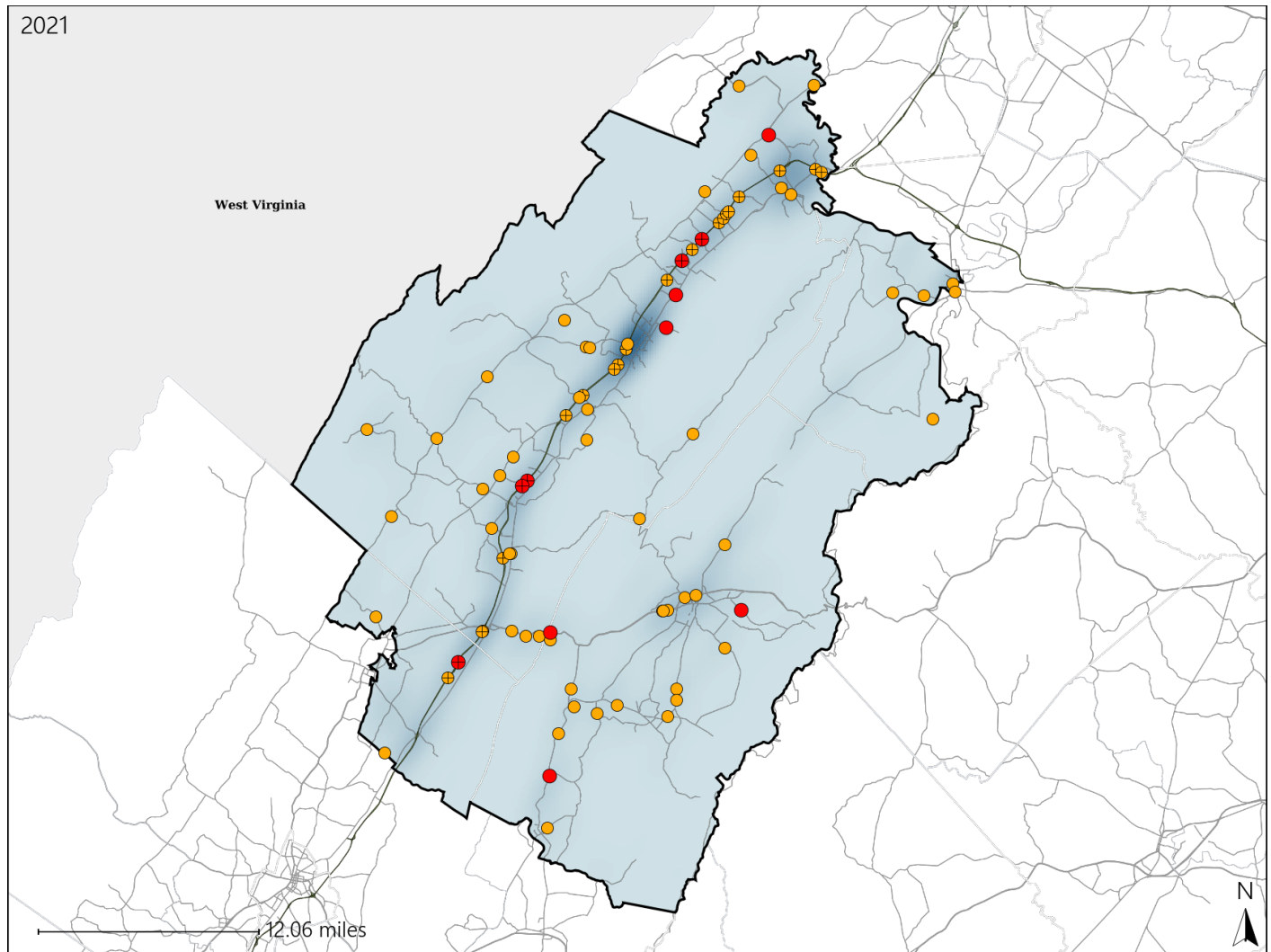


Report of Crashes for January 1st - December 31st, 2021

Virginia House District 15 Crash Statistics

Report Generated April, 2022

	Count	Highest Time Period(s)	Highest Day(s)	Highest Month(s)
Fatal Crashes	11	6:00pm - 8:59pm	Sunday	December - March
Resulting Fatalities	11	(36%)	(36%)	(36%)
Serious Injury Crashes	72	Noon - 2:59pm	Friday	June
		(26%)	(19%)	(18%)



House District 15 Crashes

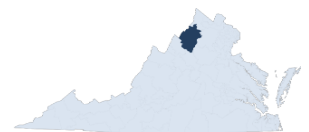
Interstate Crashes

- Fatal
- Serious Injury

Non-interstate Crashes

- Fatal
- Serious Injury

The blue gradient represents the density of all crashes.



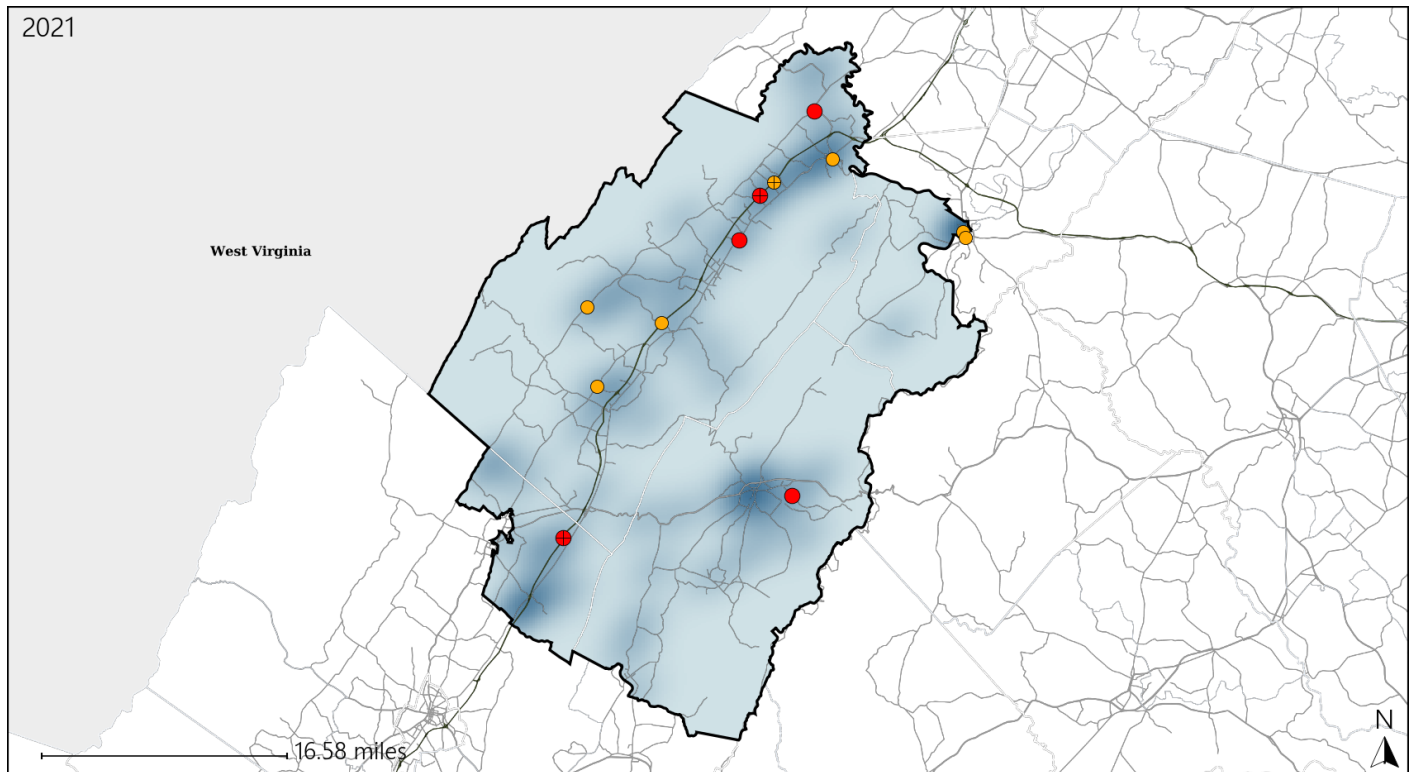
Available Crash Data - Calendar Year (CY)	CY 2018	CY 2019	CY 2020	CY 2021
Total Crashes	1193	1099	999	1156
Fatal Crashes	11	8	14	11
Injury Crashes	351	311	262	320

Report of Crashes for January 1st - December 31st, 2021

Virginia House District 15 Alcohol Crash Statistics

Report Generated April, 2022

	Count	Highest Time Period(s)	Highest Day(s)	Highest Month(s)
Fatal Crashes	5	3:00am - 5:59am	Sunday	March
Resulting Fatalities	5	3:00pm - 5:59pm (40%)	(60%)	(40%)
Serious Injury Crashes	7	6:00pm - 8:59pm Midnight - 2:59am (58%)	Monday (43%)	November (29%)



House District 15 Alcohol-Related Crashes

Interstate Crashes

Non-interstate Crashes

● Fatal

● Fatal

⊕ Serious Injury

⊕ Serious Injury

The blue gradient represents the density of all alcohol-related crashes.



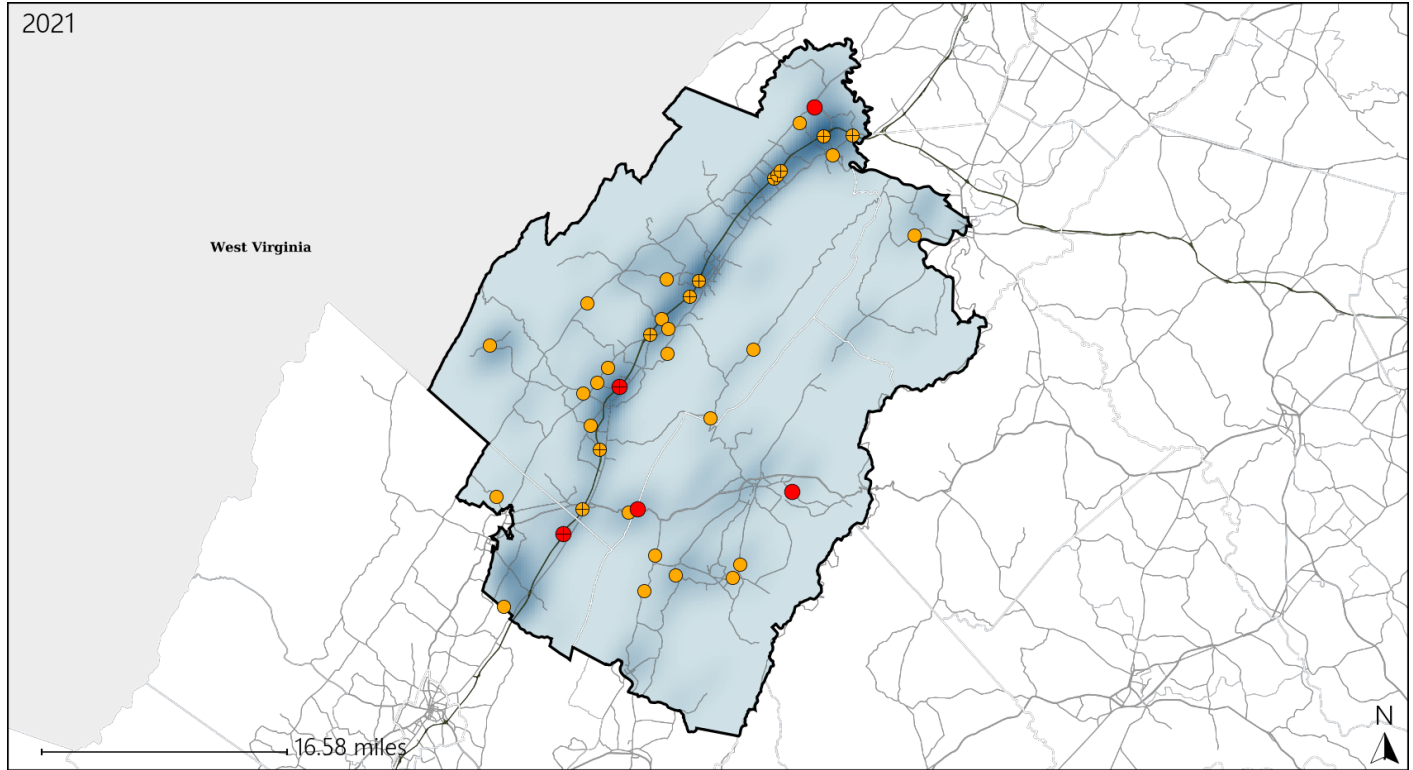
Available Crash Data - Calendar Year (CY)	CY 2018	CY 2019	CY 2020	CY 2021
Total Crashes	1193	1099	999	1156
Fatal Crashes	11	8	14	11
Injury Crashes	351	311	262	320
Alcohol-Related Fatal Crashes	3	1	4	5
Percent of Alcohol-Related Fatal Crashes to Total Fatal Crashes	27%	13%	29%	45%
Alcohol-Related Injury Crashes	31	29	31	23
Percent of Alcohol-Related Injury Crashes to Total Injury Crashes	9%	9%	12%	7%

Report of Crashes for January 1st - December 31st, 2021

Virginia House District 15 Speed Crash Statistics

Report Generated April, 2022

	Count	Highest Time Period(s)	Highest Day(s)	Highest Month(s)
Fatal Crashes	5	6:00pm - 8:59pm	Thursday	March
Resulting Fatalities	5	(60%)	(40%)	(40%)
Serious Injury Crashes	33	Noon - 2:59pm	Friday	December • June
		(27%)	(24%)	(24%)



House District 15 Speed-Related Crashes

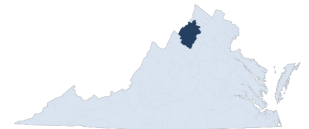
Interstate Crashes

Non-interstate Crashes

- Fatal
- Serious Injury

- Fatal
- Serious Injury

The blue gradient represents the density of all speed-related crashes.

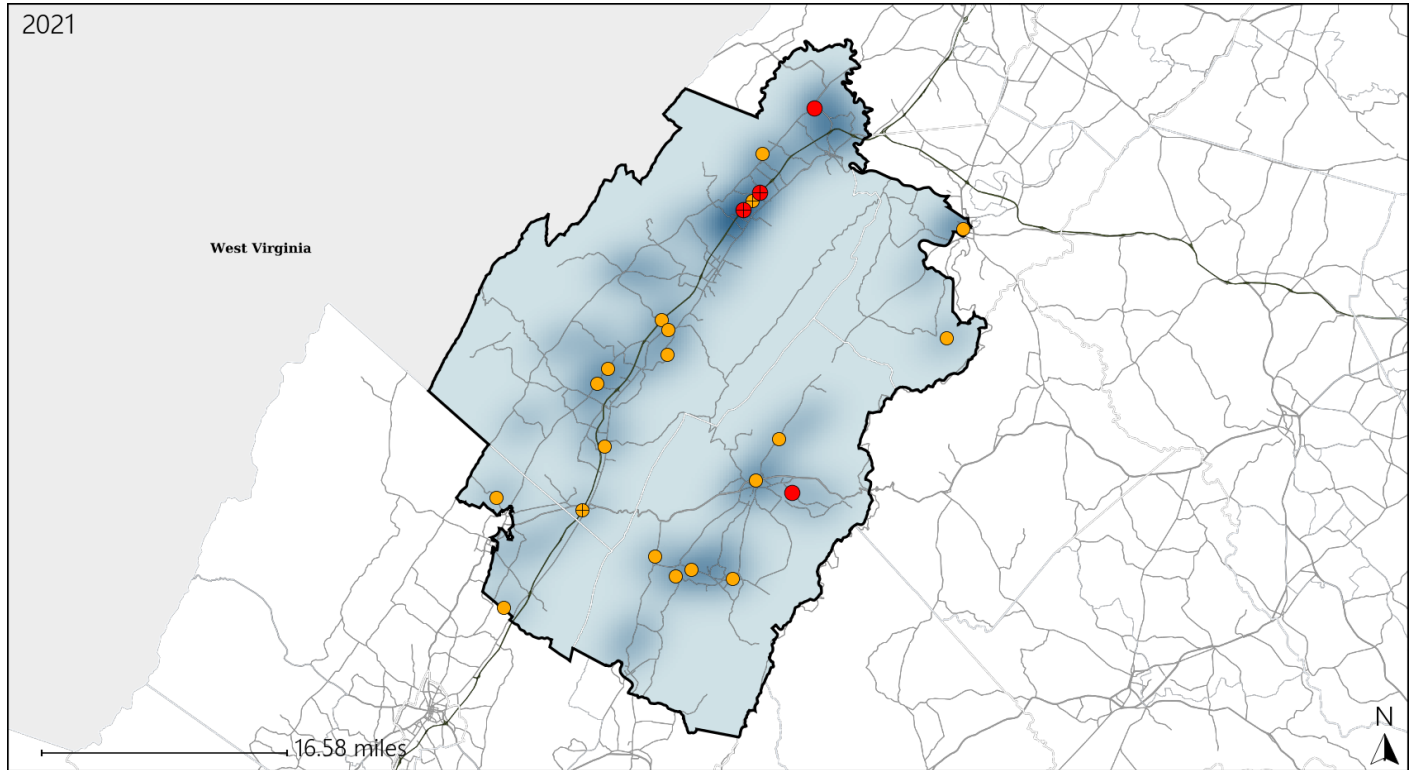


Available Crash Data - Calendar Year (CY)	CY 2018	CY 2019	CY 2020	CY 2021
Total Crashes	1193	1099	999	1156
Fatal Crashes	11	8	14	11
Injury Crashes	351	311	262	320
Speed-Related Fatal Crashes	5	2	9	5
Percent of Speed-Related Fatal Crashes to Total Fatal Crashes	45%	25%	64%	45%
Speed-Related Injury Crashes	112	95	100	101
Percent of Speed-Related Injury Crashes to Total Injury Crashes	32%	31%	38%	32%

Virginia House District 15 Unrestrained Crash Statistics

Report Generated April, 2022

	Count	Highest Time Period(s)	Highest Day(s)	Highest Month(s)
Fatal Crashes	4	6:00pm - 8:59pm	Sunday	March
Unrestrained Fatalities	4	(50%)	(50%)	(50%)
Serious Injury Crashes	19	9:00pm - 11:59pm Noon - 2:59pm	Wednesday	February • June
		(52%)	(21%)	(42%)



House District 15 Unrestrained-Related Crashes

Interstate Crashes

Non-interstate Crashes

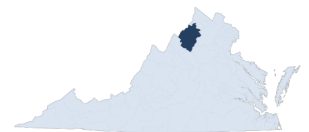
● Fatal

● Fatal

⊕ Serious Injury

● Serious Injury

The blue gradient represents the density of all unrestrained-related crashes.

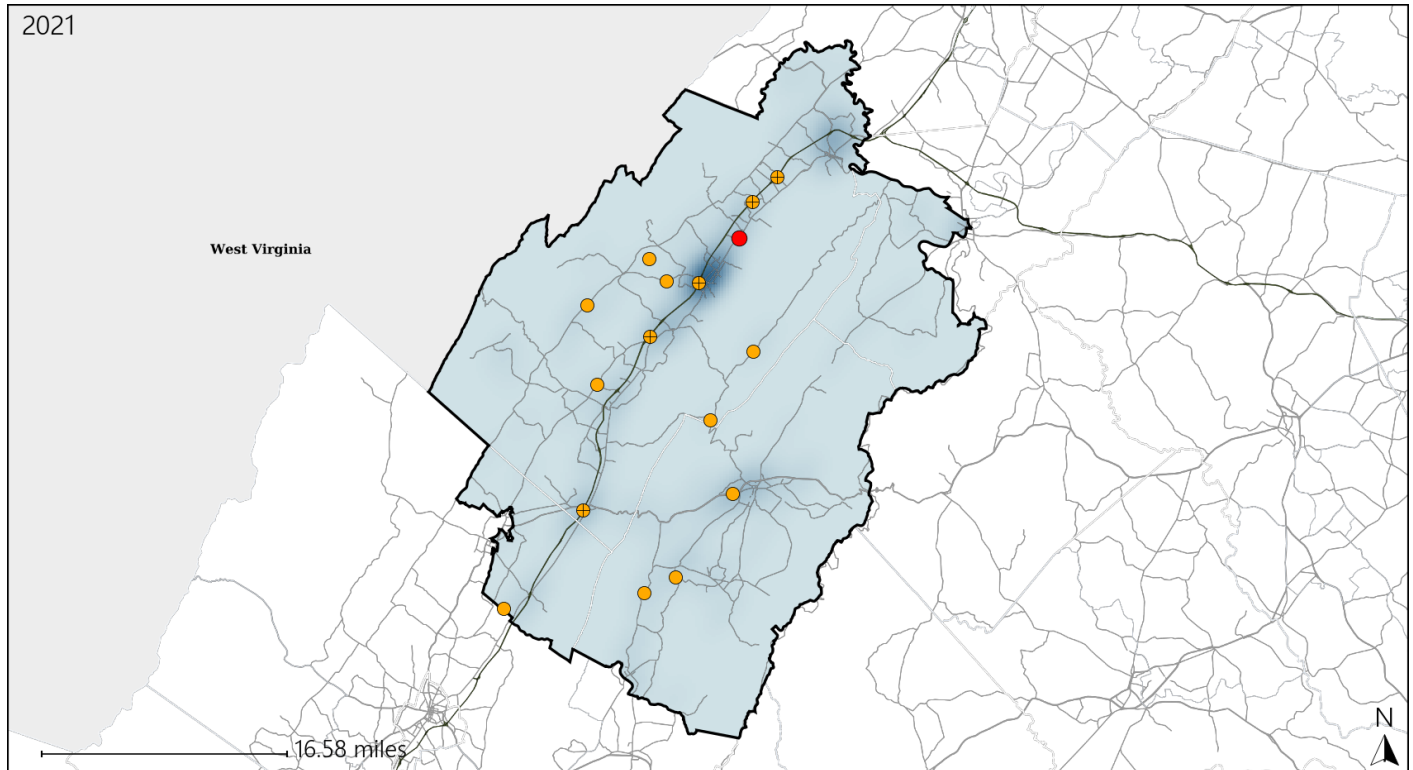


Available Crash Data - Calendar Year (CY)	CY 2018	CY 2019	CY 2020	CY 2021
Total Crashes	1193	1099	999	1156
Fatalities	12	11	16	11
Injuries	518	443	371	435
Unrestrained Fatalities	7	2	8	4
Percent of Unrestrained Fatalities to Total Fatalities	58%	18%	50%	36%
Unrestrained Injuries	37	44	58	61
Percent of Unrestrained Injuries to Total Injuries	7%	10%	16%	14%

Virginia House District 15 Distracted Driving Crash Statistics

Report Generated April, 2022

	Count	Highest Time Period(s)	Highest Day(s)	Highest Month(s)
Fatal Crashes	1	3:00pm - 5:59pm	Sunday	December
Resulting Fatalities	1	(100%)	(100%)	(100%)
Serious Injury Crashes	15	Noon - 2:59pm	Tuesday	June
		(27%)	(27%)	(20%)



House District 15 Distracted Driving-Related Crashes

Interstate Crashes

Non-interstate Crashes

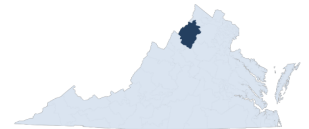
● Fatal

● Fatal

⊕ Serious Injury

⊕ Serious Injury

The blue gradient represents the density of all distracted driving-related crashes.



Available Crash Data - Calendar Year (CY)	CY 2018	CY 2019	CY 2020	CY 2021
Total Crashes	1193	1099	999	1156
Fatal Crashes	11	8	14	11
Injury Crashes	351	311	262	320
Distracted Driving-Related Fatal Crashes	2	1	4	1
Percent of Distracted Driving-Related Fatal Crashes to Total Fatal Crashes	18%	13%	29%	9%
Distracted Driving-Related Injury Crashes	59	73	61	68
Percent of Distracted Driving-Related Injury Crashes to Total Injury Crashes	17%	23%	23%	21%