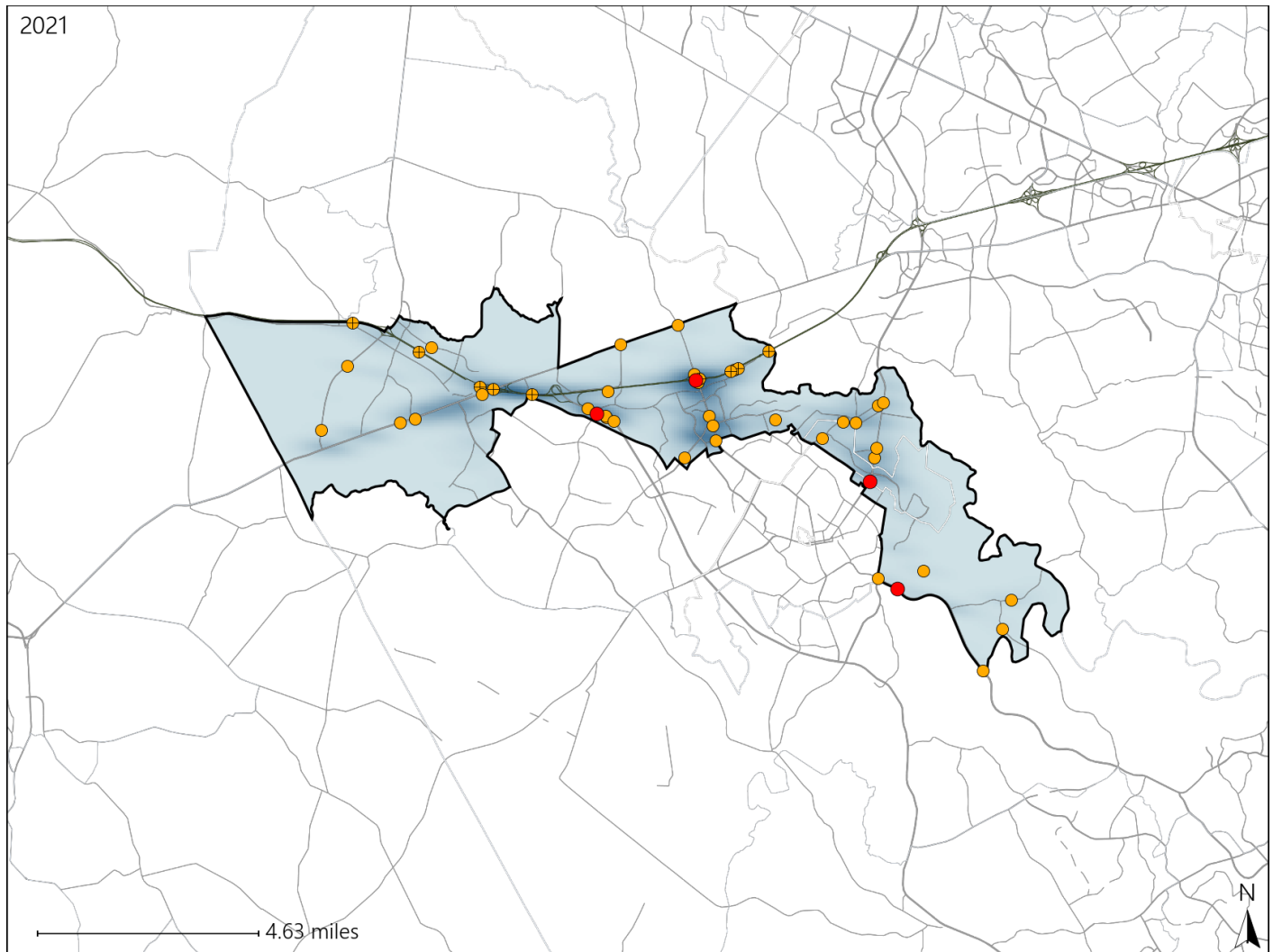


Virginia House District 13 Crash Statistics

Report Generated April, 2022

	Count	Highest Time Period(s)	Highest Day(s)	Highest Month(s)
Fatal Crashes	4	6:00am - 8:59am	Thursday	January • March
Resulting Fatalities	4	6:00pm - 8:59pm (100%)	(50%)	(50%)
Serious Injury Crashes	42	6:00pm - 8:59pm 9:00pm - 11:59pm (42%)	Sunday (24%)	November (14%)



House District 13 Crashes

Interstate Crashes

- Fatal
- ⊕ Serious Injury

Non-interstate Crashes

- Fatal
- Serious Injury

The blue gradient represents the density of all crashes.

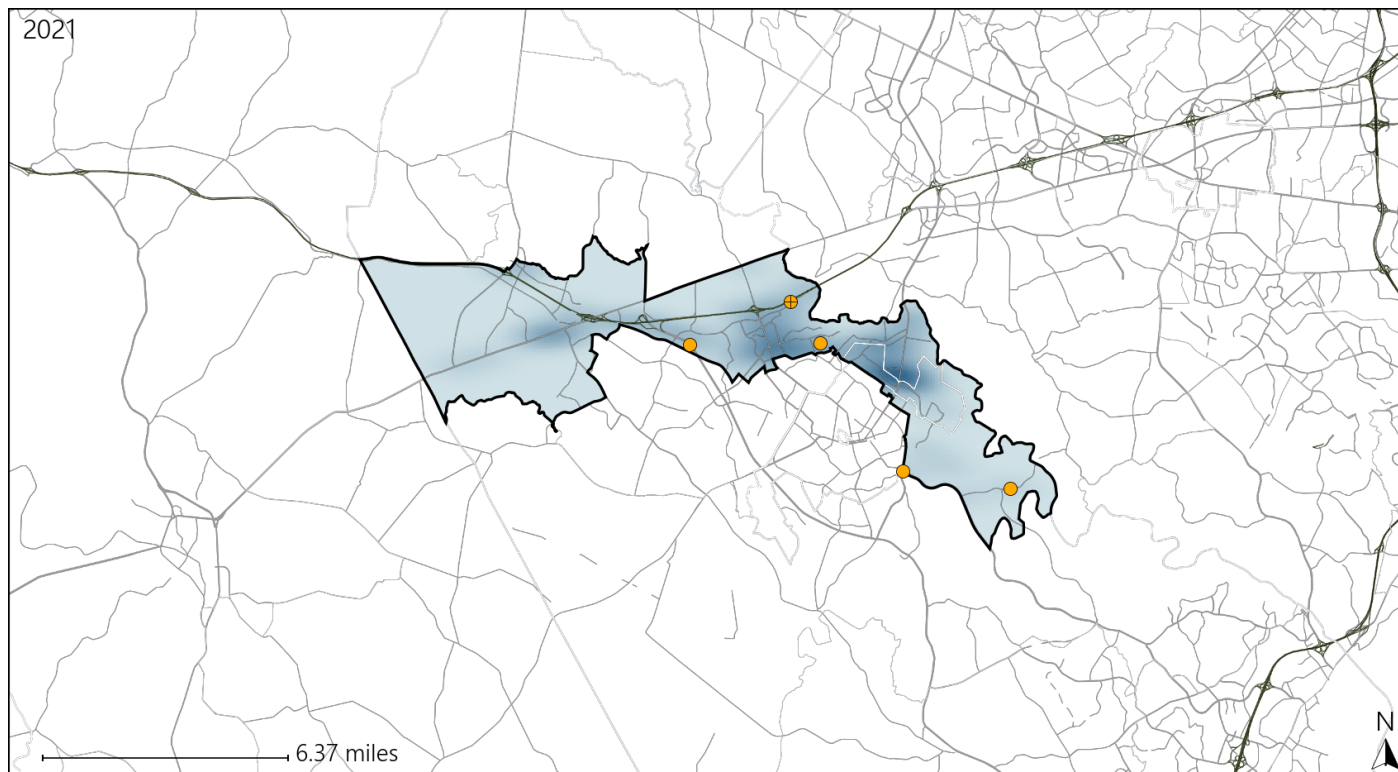


Available Crash Data - Calendar Year (CY)	CY 2018	CY 2019	CY 2020	CY 2021
Total Crashes	1307	1405	1094	1339
Fatal Crashes	2	4	4	4
Injury Crashes	359	423	287	384

Virginia House District 13 Alcohol Crash Statistics

Report Generated April, 2022

	Count	Highest Time Period(s)	Highest Day(s)	Highest Month(s)
Fatal Crashes	0	-	-	-
Resulting Fatalities	0			
Serious Injury Crashes	5	6:00pm - 8:59pm (40%)	Sunday (60%)	November + October (80%)



House District 13 Alcohol-Related Crashes

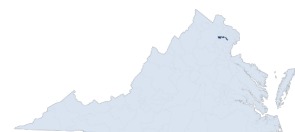
Interstate Crashes

- Fatal
- Serious Injury

Non-interstate Crashes

- Fatal
- Serious Injury

The blue gradient represents the density of all alcohol-related crashes.



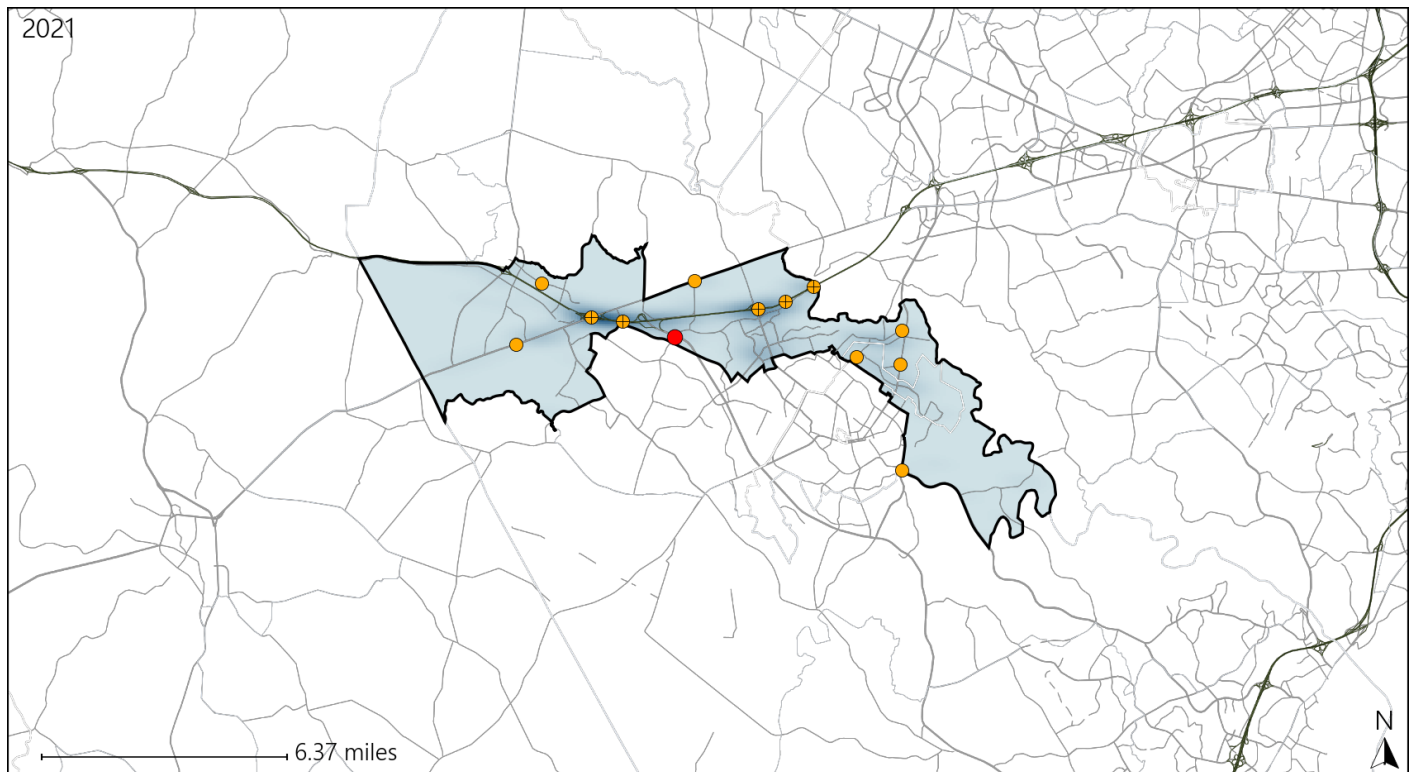
Available Crash Data - Calendar Year (CY)	CY 2018	CY 2019	CY 2020	CY 2021
Total Crashes	1307	1405	1094	1339
Fatal Crashes	2	4	4	4
Injury Crashes	359	423	287	384
Alcohol-Related Fatal Crashes	1	2	1	0
Percent of Alcohol-Related Fatal Crashes to Total Fatal Crashes	50%	50%	25%	0%
Alcohol-Related Injury Crashes	24	32	27	28
Percent of Alcohol-Related Injury Crashes to Total Injury Crashes	7%	8%	9%	7%

Report of Crashes for January 1st - December 31st, 2021

Virginia House District 13 Speed Crash Statistics

Report Generated April, 2022

	Count	Highest Time Period(s)	Highest Day(s)	Highest Month(s)
Fatal Crashes	1	6:00am - 8:59am	Sunday	January
Resulting Fatalities	1	(100%)	(100%)	(100%)
Serious Injury Crashes	12	6:00pm - 8:59pm 9:00pm - 11:59pm	Sunday	January • March
		(50%)	(33%)	(34%)



House District 13 Speed-Related Crashes

Interstate Crashes

Non-interstate Crashes

● Fatal

● Fatal

⊕ Serious Injury

⊕ Serious Injury

The blue gradient represents the density of all speed-related crashes.

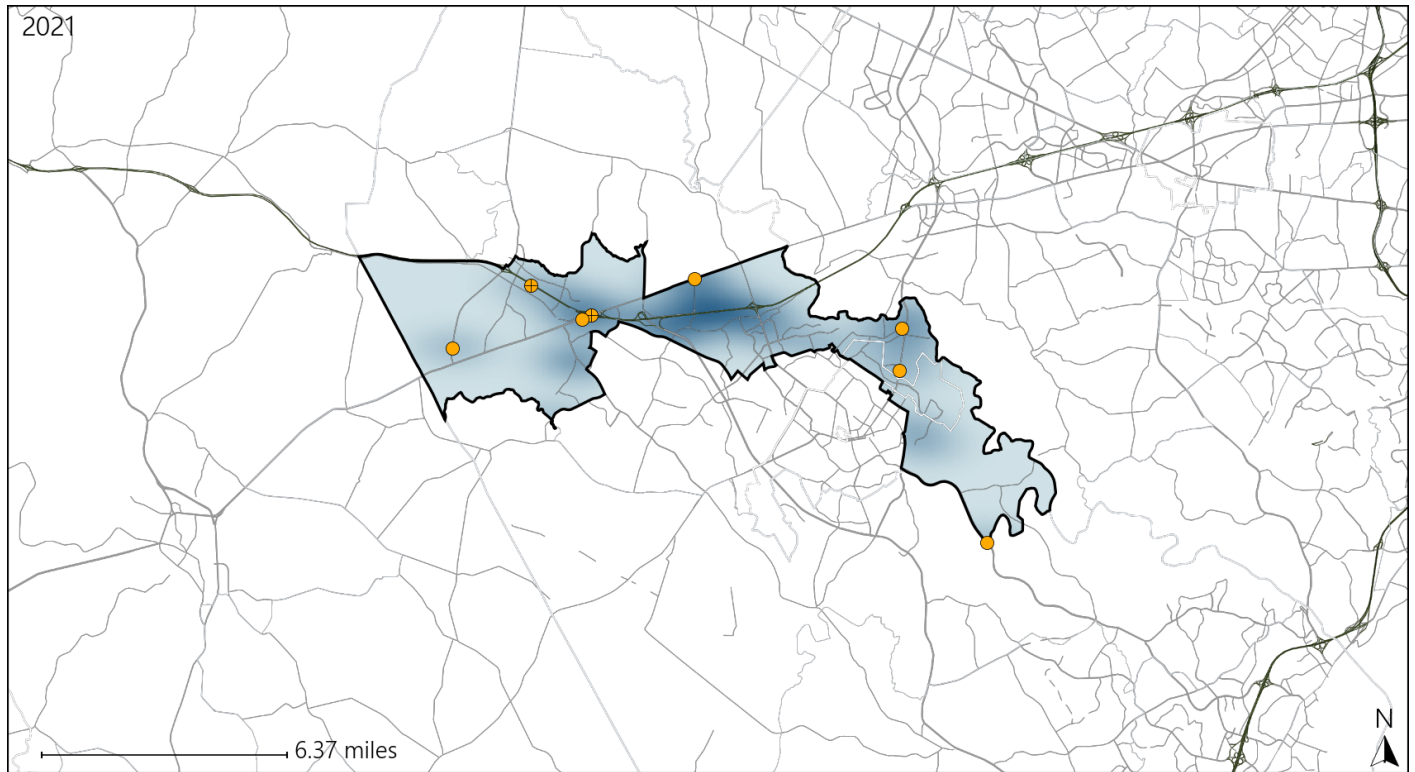


Available Crash Data - Calendar Year (CY)	CY 2018	CY 2019	CY 2020	CY 2021
Total Crashes	1307	1405	1094	1339
Fatal Crashes	2	4	4	4
Injury Crashes	359	423	287	384
Speed-Related Fatal Crashes	0	1	2	1
Percent of Speed-Related Fatal Crashes to Total Fatal Crashes	0%	25%	50%	25%
Speed-Related Injury Crashes	71	79	54	79
Percent of Speed-Related Injury Crashes to Total Injury Crashes	20%	19%	19%	21%

Virginia House District 13 Unrestrained Crash Statistics

Report Generated April, 2022

	Count	Highest Time Period(s)	Highest Day(s)	Highest Month(s)
Fatal Crashes	0	-	-	-
Unrestrained Fatalities	0	-	-	-
Serious Injury Crashes	8	6:00am - 8:59am 9:00am - 11:59am (50%)	Thursday (38%)	August (25%)



House District 13 Unrestrained-Related Crashes

Interstate Crashes

Non-interstate Crashes

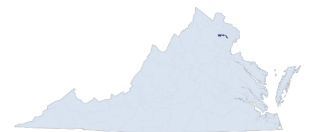
● Fatal

● Fatal

⊕ Serious Injury

⊕ Serious Injury

The blue gradient represents the density of all unrestrained-related crashes.

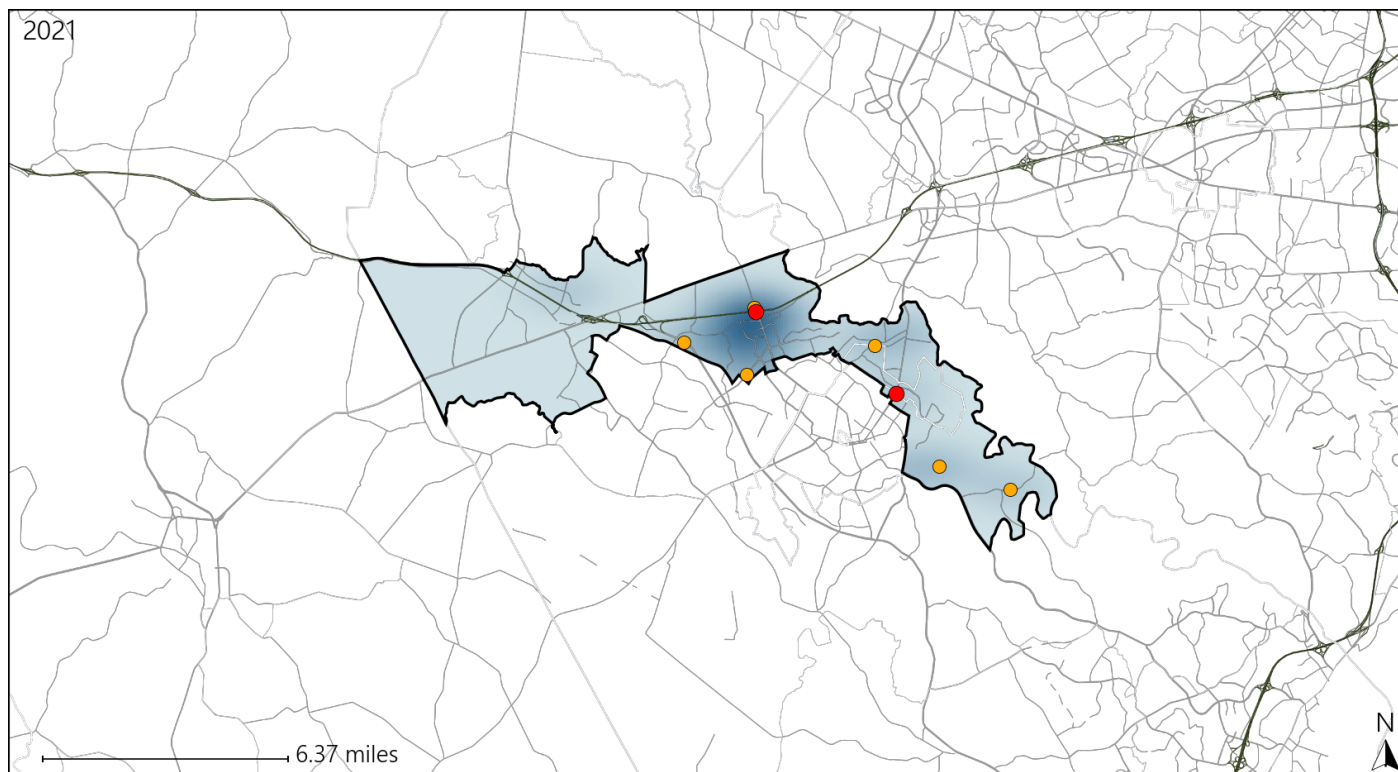


Available Crash Data - Calendar Year (CY)	CY 2018	CY 2019	CY 2020	CY 2021
Total Crashes	1307	1405	1094	1339
Fatalities	2	5	4	4
Injuries	588	667	471	654
Unrestrained Fatalities	1	0	0	0
Percent of Unrestrained Fatalities to Total Fatalities	50%	0%	0%	0%
Unrestrained Injuries	23	22	30	29
Percent of Unrestrained Injuries to Total Injuries	4%	3%	6%	4%

Virginia House District 13 Pedestrian Crash Statistics

Report Generated April, 2022

	Count	Highest Time Period(s)	Highest Day(s)	Highest Month(s)
Fatal Crashes	2	6:00am - 8:59am	Monday • Thursday	November • September
Pedestrian Fatalities	2	6:00pm - 8:59pm (100%)	(100%)	(100%)
Serious Injury Crashes	6	6:00pm - 8:59pm (50%)	Saturday • Sunday (66%)	November (50%)



House District 13 Pedestrian-Related Crashes

Interstate Crashes

Non-interstate Crashes

● Fatal

● Fatal

● Serious Injury

● Serious Injury

The blue gradient represents the density of all pedestrian-related crashes.

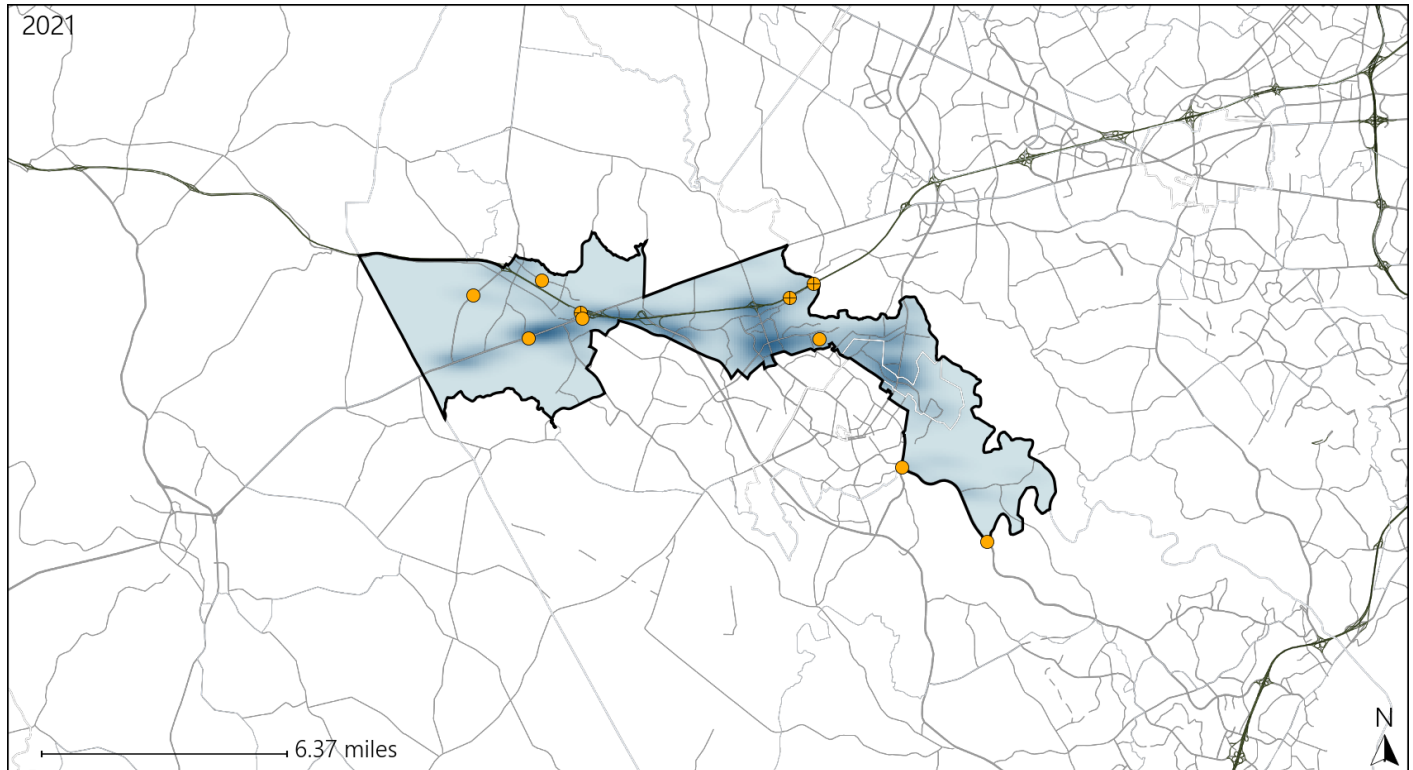


Available Crash Data - Calendar Year (CY)	CY 2018	CY 2019	CY 2020	CY 2021
Total Crashes	1307	1405	1094	1339
Fatal Crashes	2	4	4	4
Injury Crashes	359	423	287	384
Pedestrian-Related Fatal Crashes	0	1	1	2
Percent of Pedestrian-Related Fatal Crashes to Total Fatal Crashes	0%	25%	25%	50%
Pedestrian-Related Injury Crashes	16	19	13	15
Percent of Pedestrian-Related Injury Crashes to Total Injury Crashes	4%	4%	5%	4%

Virginia House District 13 Distracted Driving Crash Statistics

Report Generated April, 2022

	Count	Highest Time Period(s)	Highest Day(s)	Highest Month(s)
Fatal Crashes	0	-	-	-
Resulting Fatalities	0			
Serious Injury Crashes	10	Noon - 2:59pm (40%)	Sunday (30%)	April (30%)



House District 13 Distracted Driving-Related Crashes

Interstate Crashes

Non-interstate Crashes

- Fatal
- Serious Injury

- Fatal
- Serious Injury

The blue gradient represents the density of all distracted driving-related crashes.



Available Crash Data - Calendar Year (CY)	CY 2018	CY 2019	CY 2020	CY 2021
Total Crashes	1307	1405	1094	1339
Fatal Crashes	2	4	4	4
Injury Crashes	359	423	287	384
Distracted Driving-Related Fatal Crashes	2	2	1	0
Percent of Distracted Driving-Related Fatal Crashes to Total Fatal Crashes	100%	50%	25%	0%
Distracted Driving-Related Injury Crashes	90	99	75	80
Percent of Distracted Driving-Related Injury Crashes to Total Injury Crashes	25%	23%	26%	21%