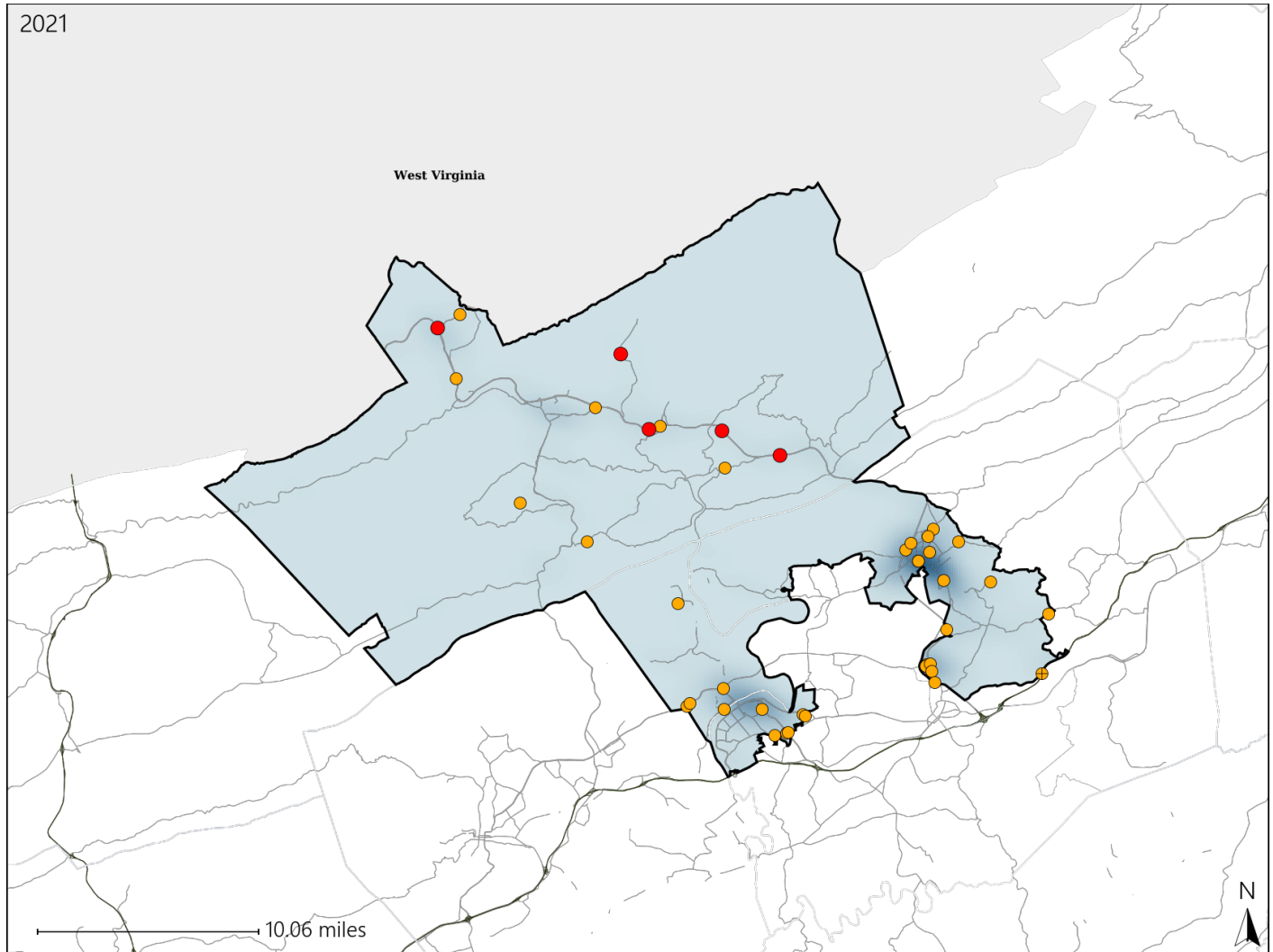


Virginia House District 12 Crash Statistics

Report Generated April, 2022

	Count	Highest Time Period(s)	Highest Day(s)	Highest Month(s)
Fatal Crashes	5	9:00am - 11:59am	Friday	July • October
Resulting Fatalities	5	(40%)	(40%)	(80%)
Serious Injury Crashes	36	Noon - 2:59pm	Thursday	September
		(31%)	(22%)	(25%)



House District 12 Crashes

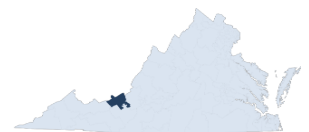
Interstate Crashes

- Fatal
- Serious Injury

Non-interstate Crashes

- Fatal
- Serious Injury

The blue gradient represents the density of all crashes.

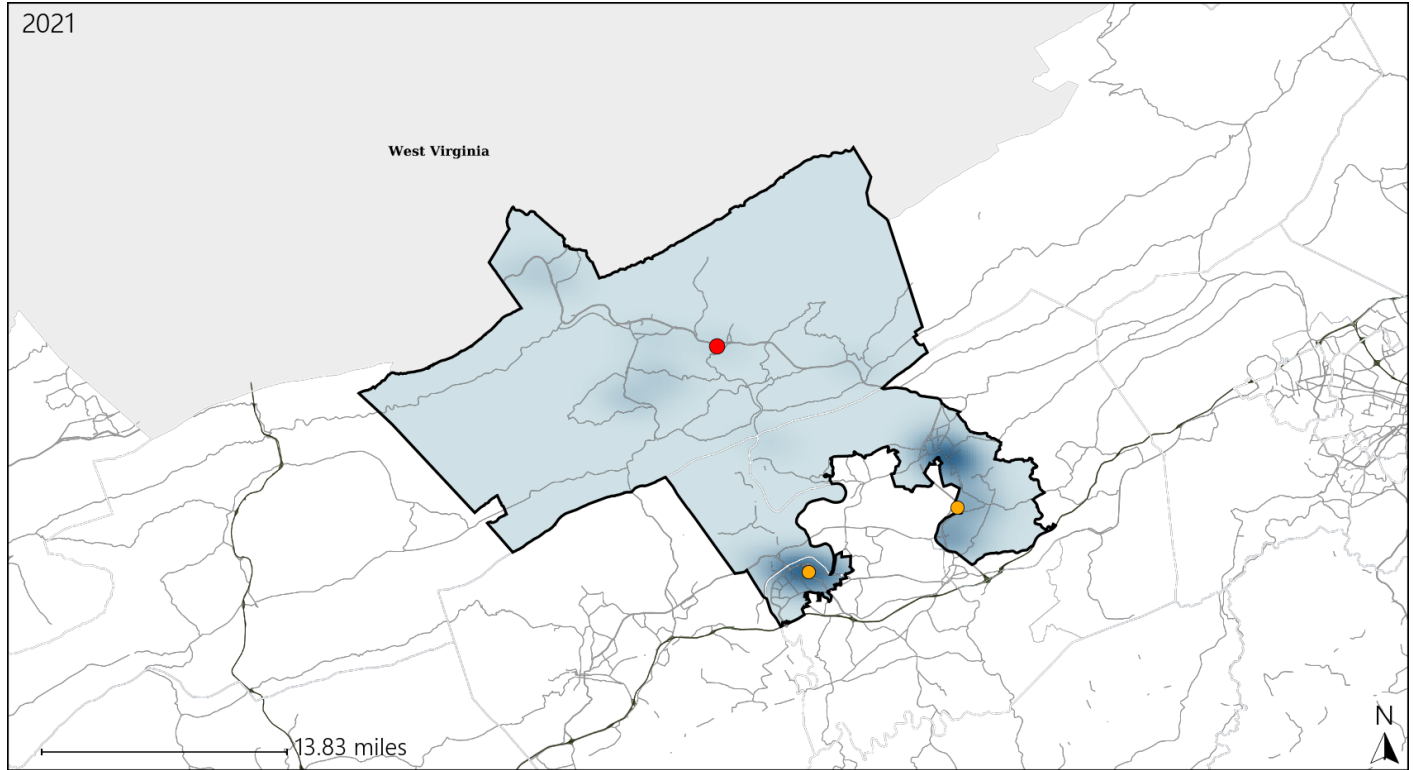


Available Crash Data - Calendar Year (CY)	CY 2018	CY 2019	CY 2020	CY 2021
Total Crashes	1013	1003	698	884
Fatal Crashes	4	6	7	5
Injury Crashes	366	359	242	303

Virginia House District 12 Alcohol Crash Statistics

Report Generated April, 2022

	Count	Highest Time Period(s)	Highest Day(s)	Highest Month(s)
Fatal Crashes	1	9:00am - 11:59am	Friday	January
Resulting Fatalities	1	(100%)	(100%)	(100%)
Serious Injury Crashes	2	Midnight - 2:59am	Sunday • Wednesday	May • September
		(100%)	(100%)	(100%)



House District 12 Alcohol-Related Crashes

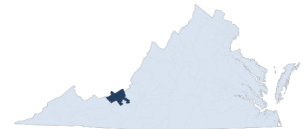
Interstate Crashes

Non-interstate Crashes

- Fatal
- Serious Injury

- Fatal
- Serious Injury

The blue gradient represents the density of all alcohol-related crashes.

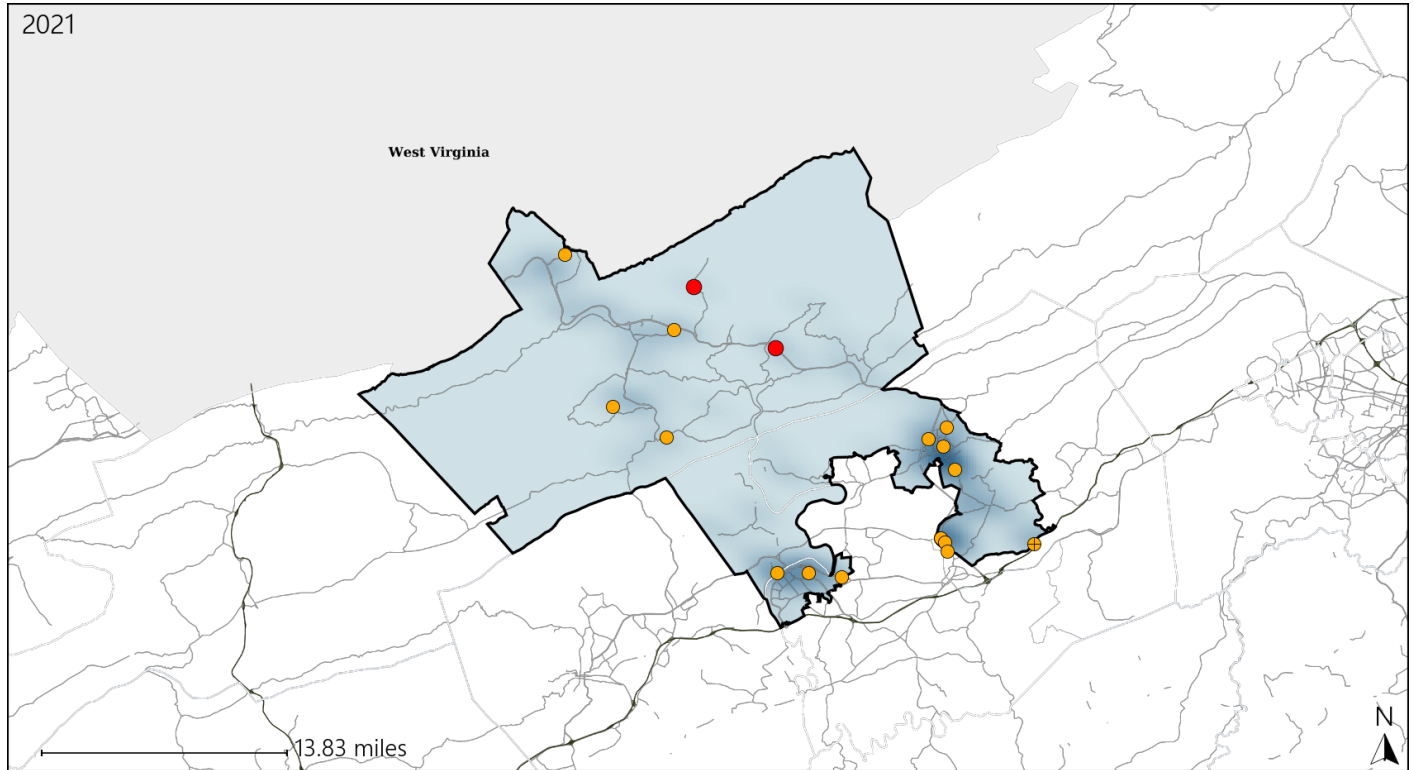


Available Crash Data - Calendar Year (CY)	CY 2018	CY 2019	CY 2020	CY 2021
Total Crashes	1013	1003	698	884
Fatal Crashes	4	6	7	5
Injury Crashes	366	359	242	303
Alcohol-Related Fatal Crashes	1	3	1	1
Percent of Alcohol-Related Fatal Crashes to Total Fatal Crashes	25%	50%	14%	20%
Alcohol-Related Injury Crashes	33	29	30	23
Percent of Alcohol-Related Injury Crashes to Total Injury Crashes	9%	8%	12%	8%

Virginia House District 12 Speed Crash Statistics

Report Generated April, 2022

	Count	Highest Time Period(s)	Highest Day(s)	Highest Month(s)
Fatal Crashes	2	9:00pm - 11:59pm	Friday • Thursday	July • October
Resulting Fatalities	2	Noon - 2:59pm (100%)	(100%)	(100%)
Serious Injury Crashes	15	Noon - 2:59pm (33%)	Saturday (27%)	February • September (40%)



House District 12 Speed-Related Crashes

Interstate Crashes

Non-interstate Crashes

● Fatal

● Fatal

● Serious Injury

● Serious Injury

The blue gradient represents the density of all speed-related crashes.

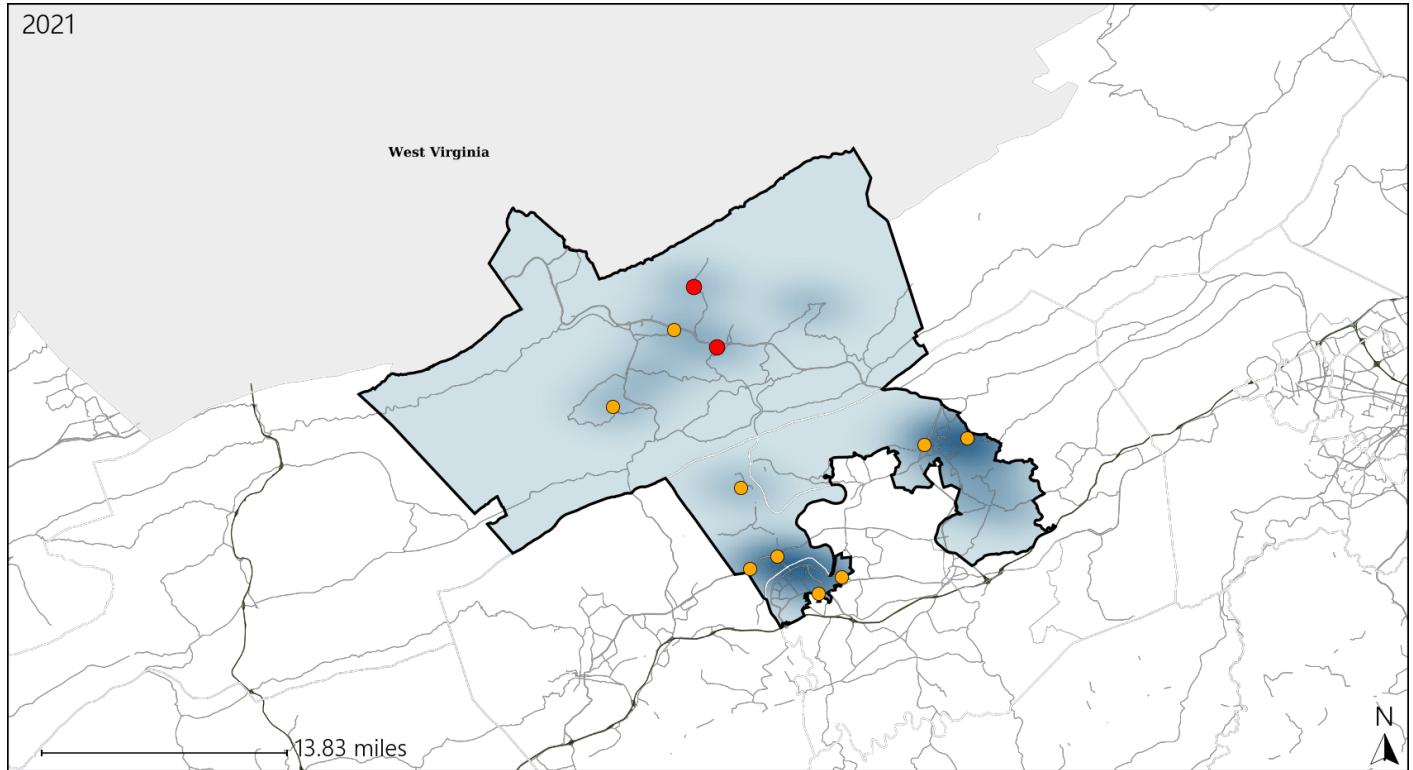


Available Crash Data - Calendar Year (CY)	CY 2018	CY 2019	CY 2020	CY 2021
Total Crashes	1013	1003	698	884
Fatal Crashes	4	6	7	5
Injury Crashes	366	359	242	303
Speed-Related Fatal Crashes	1	1	1	2
Percent of Speed-Related Fatal Crashes to Total Fatal Crashes	25%	17%	14%	40%
Speed-Related Injury Crashes	61	65	40	54
Percent of Speed-Related Injury Crashes to Total Injury Crashes	17%	18%	17%	18%

Virginia House District 12 Unrestrained Crash Statistics

Report Generated April, 2022

	Count	Highest Time Period(s)	Highest Day(s)	Highest Month(s)
Fatal Crashes	2	9:00am - 11:59am	Friday • Thursday	January • July
Unrestrained Fatalities	2	Noon - 2:59pm (100%)	(100%)	(100%)
Serious Injury Crashes	9	6:00pm - 8:59pm (56%)	Sunday • Thursday (44%)	September (33%)



House District 12 Unrestrained-Related Crashes

Interstate Crashes

Non-interstate Crashes

- Fatal
- Serious Injury

- Fatal
- Serious Injury

The blue gradient represents the density of all unrestrained-related crashes.

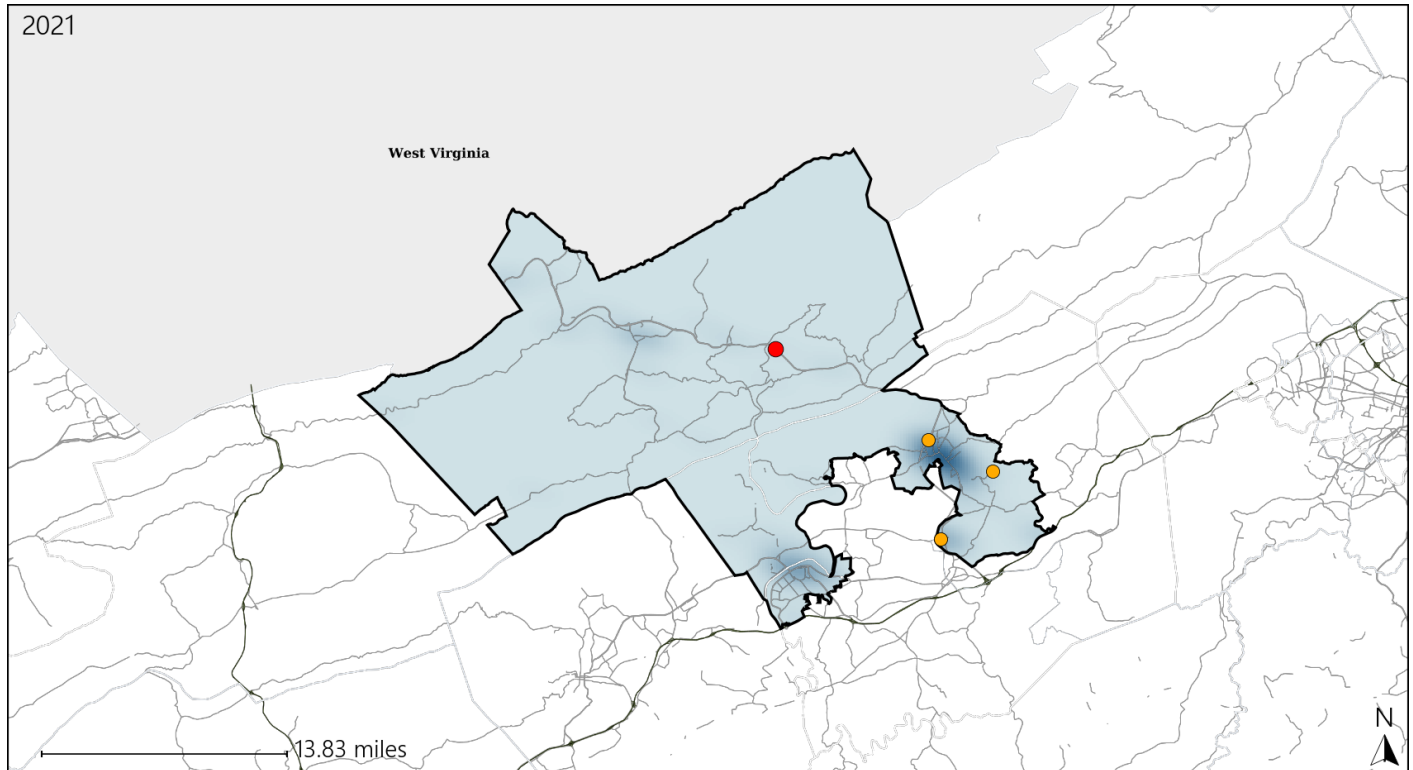


Available Crash Data - Calendar Year (CY)	CY 2018	CY 2019	CY 2020	CY 2021
Total Crashes	1013	1003	698	884
Fatalities	4	6	7	5
Injuries	511	500	320	387
Unrestrained Fatalities	2	3	1	2
Percent of Unrestrained Fatalities to Total Fatalities	50%	50%	14%	40%
Unrestrained Injuries	35	31	23	22
Percent of Unrestrained Injuries to Total Injuries	7%	6%	7%	6%

Virginia House District 12 Distracted Driving Crash Statistics

Report Generated April, 2022

	Count	Highest Time Period(s)	Highest Day(s)	Highest Month(s)
Fatal Crashes	1	9:00pm - 11:59pm	Friday	October
Resulting Fatalities	1	(100%)	(100%)	(100%)
Serious Injury Crashes	3	Noon - 2:59pm	Saturday	July • March
		(67%)	(67%)	(66%)



House District 12 Distracted Driving-Related Crashes

Interstate Crashes

Non-interstate Crashes

- Fatal
- Serious Injury

- Fatal
- Serious Injury

The blue gradient represents the density of all distracted driving-related crashes.



Available Crash Data - Calendar Year (CY)	CY 2018	CY 2019	CY 2020	CY 2021
Total Crashes	1013	1003	698	884
Fatal Crashes	4	6	7	5
Injury Crashes	366	359	242	303
Distracted Driving-Related Fatal Crashes	0	0	0	1
Percent of Distracted Driving-Related Fatal Crashes to Total Fatal Crashes	0%	0%	0%	20%
Distracted Driving-Related Injury Crashes	67	55	50	52
Percent of Distracted Driving-Related Injury Crashes to Total Injury Crashes	18%	15%	21%	17%