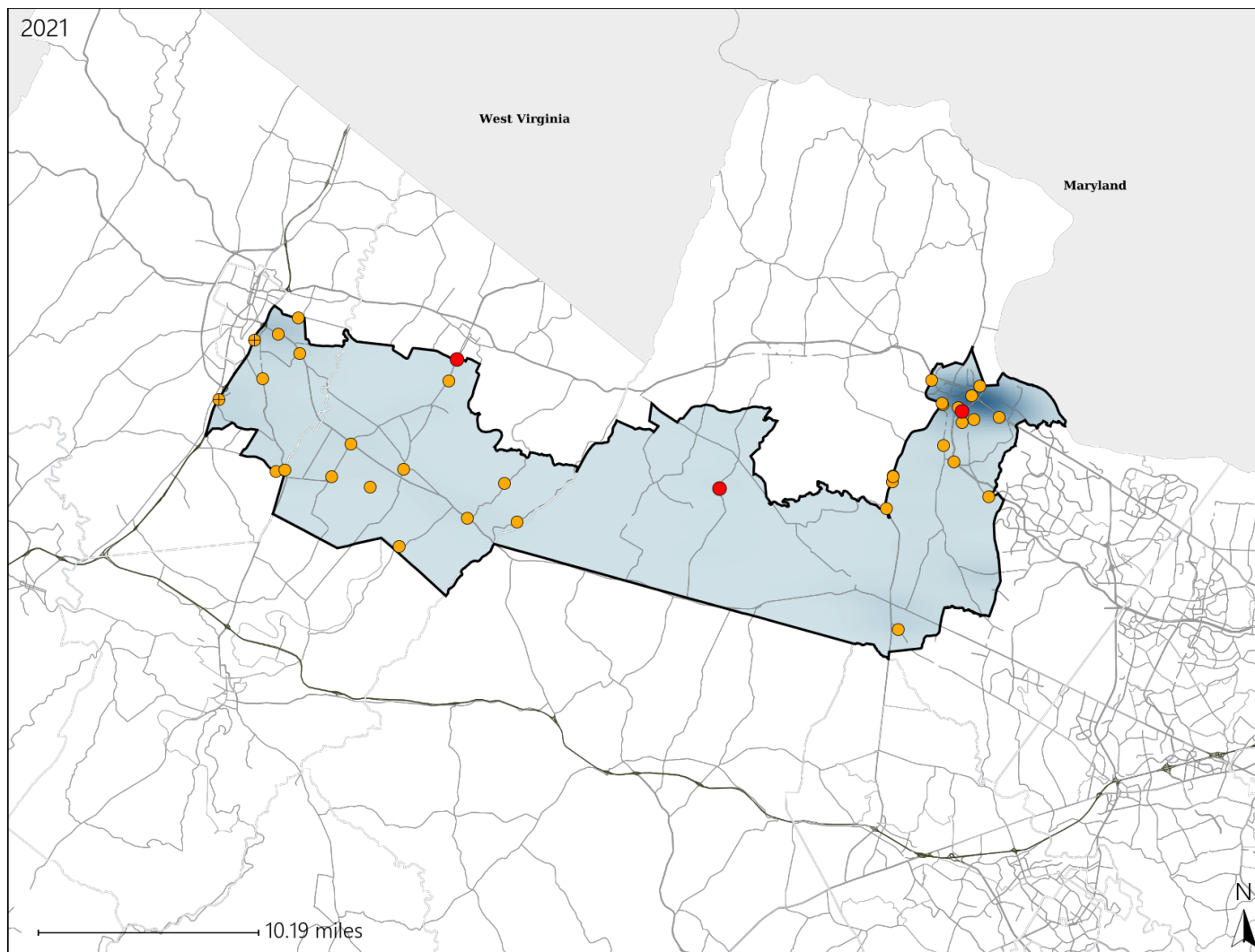


Virginia House District 10 Crash Statistics

Report Generated April, 2022

	Count	Highest Time Period(s)	Highest Day(s)	Highest Month(s)
Fatal Crashes	3	3:00pm - 5:59pm	Friday • Saturday	August • July
Resulting Fatalities	3	6:00pm - 8:59pm (66%)	(66%)	(66%)
Serious Injury Crashes	35	3:00pm - 5:59pm (29%)	Saturday (26%)	September (20%)



House District 10 Crashes

Interstate Crashes

- Fatal
- Serious Injury

Non-interstate Crashes

- Fatal
- Serious Injury

The blue gradient represents the density of all crashes.



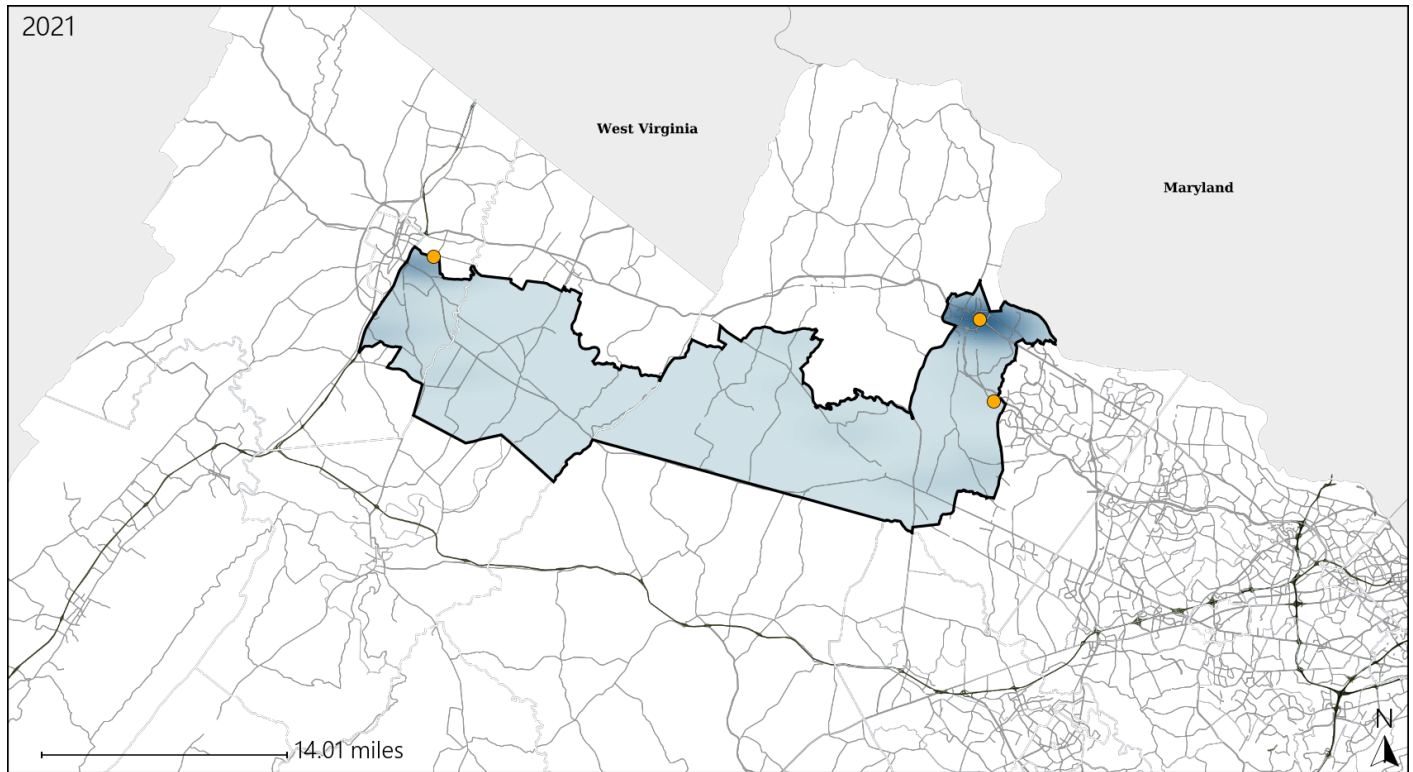
Available Crash Data - Calendar Year (CY)	CY 2018	CY 2019	CY 2020	CY 2021
Total Crashes	1406	1356	1083	1216
Fatal Crashes	9	4	8	3
Injury Crashes	420	379	278	307

Report of Crashes for January 1st - December 31st, 2021

Virginia House District 10 Alcohol Crash Statistics

Report Generated April, 2022

	Count	Highest Time Period(s)	Highest Day(s)	Highest Month(s)
Fatal Crashes	0	-	-	-
Resulting Fatalities	0	-	-	-
Serious Injury Crashes	3	6:00pm - 8:59pm 9:00am - 11:59am (66%)	Friday • Monday (66%)	February (67%)



House District 10 Alcohol-Related Crashes

Interstate Crashes

Non-interstate Crashes

● Fatal

● Fatal

⊕ Serious Injury

⊕ Serious Injury

The blue gradient represents the density of all alcohol-related crashes.

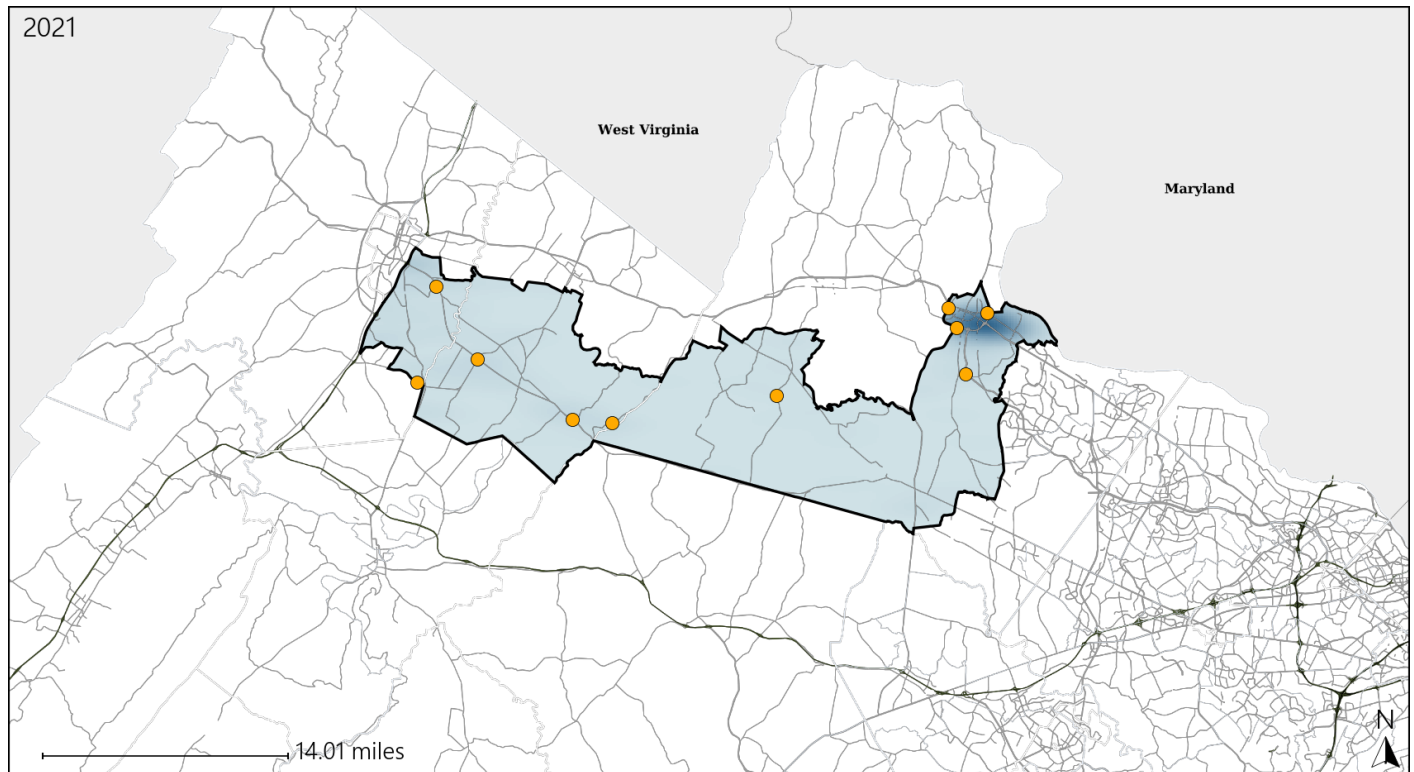


Available Crash Data - Calendar Year (CY)	CY 2018	CY 2019	CY 2020	CY 2021
Total Crashes	1406	1356	1083	1216
Fatal Crashes	9	4	8	3
Injury Crashes	420	379	278	307
Alcohol-Related Fatal Crashes	5	1	3	0
Percent of Alcohol-Related Fatal Crashes to Total Fatal Crashes	56%	25%	38%	0%
Alcohol-Related Injury Crashes	35	29	21	23
Percent of Alcohol-Related Injury Crashes to Total Injury Crashes	8%	8%	8%	7%

Virginia House District 10 Speed Crash Statistics

Report Generated April, 2022

	Count	Highest Time Period(s)	Highest Day(s)	Highest Month(s)
Fatal Crashes	0	-	-	-
Resulting Fatalities	0			
Serious Injury Crashes	10	3:00pm - 5:59pm (40%)	Saturday (40%)	September (40%)



House District 10 Speed-Related Crashes

Interstate Crashes

Non-interstate Crashes

- Fatal
- Serious Injury

- Fatal
- Serious Injury

The blue gradient represents the density of all speed-related crashes.

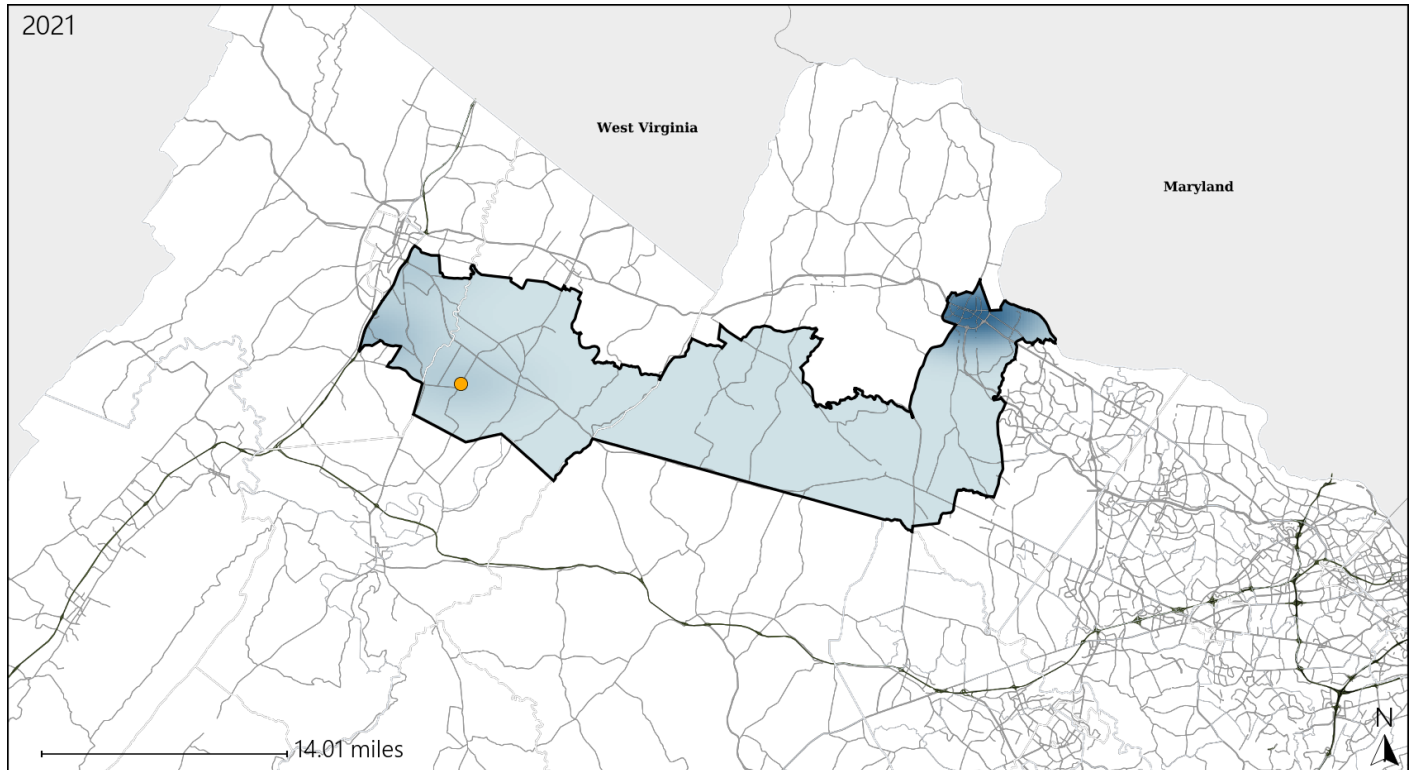


Available Crash Data - Calendar Year (CY)	CY 2018	CY 2019	CY 2020	CY 2021
Total Crashes	1406	1356	1083	1216
Fatal Crashes	9	4	8	3
Injury Crashes	420	379	278	307
Speed-Related Fatal Crashes	6	1	5	0
Percent of Speed-Related Fatal Crashes to Total Fatal Crashes	67%	25%	63%	0%
Speed-Related Injury Crashes	68	82	52	61
Percent of Speed-Related Injury Crashes to Total Injury Crashes	16%	22%	19%	20%

Virginia House District 10 Unrestrained Crash Statistics

Report Generated April, 2022

	Count	Highest Time Period(s)	Highest Day(s)	Highest Month(s)
Fatal Crashes	0	-	-	-
Unrestrained Fatalities	0	-	-	-
Serious Injury Crashes	1	3:00pm - 5:59pm (100%)	Tuesday (100%)	August (100%)



House District 10 Unrestrained-Related Crashes

Interstate Crashes

Non-interstate Crashes

- Fatal
- Serious Injury

- Fatal
- Serious Injury

The blue gradient represents the density of all unrestrained-related crashes.

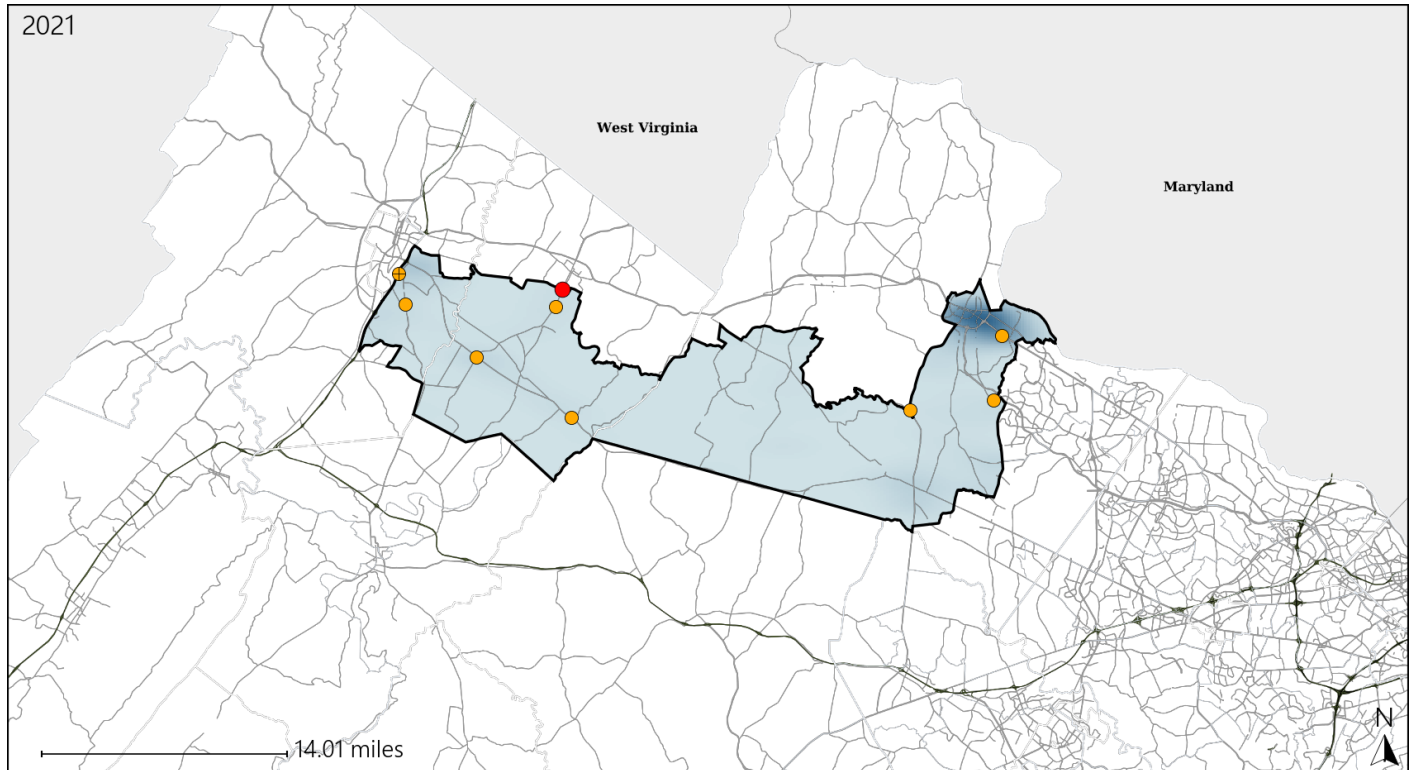


Available Crash Data - Calendar Year (CY)	CY 2018	CY 2019	CY 2020	CY 2021
Total Crashes	1406	1356	1083	1216
Fatalities	10	4	9	3
Injuries	641	561	427	454
Unrestrained Fatalities	2	3	1	0
Percent of Unrestrained Fatalities to Total Fatalities	20%	75%	11%	0%
Unrestrained Injuries	30	20	21	10
Percent of Unrestrained Injuries to Total Injuries	5%	4%	5%	2%

Virginia House District 10 Distracted Driving Crash Statistics

Report Generated April, 2022

	Count	Highest Time Period(s)	Highest Day(s)	Highest Month(s)
Fatal Crashes	1	6:00pm - 8:59pm	Friday	June
Resulting Fatalities	1	(100%)	(100%)	(100%)
Serious Injury Crashes	8	Noon - 2:59pm	Monday * Saturday	September
		(38%)	(50%)	(38%)



House District 10 Distracted Driving-Related Crashes

Interstate Crashes

Non-interstate Crashes

- Fatal
- Serious Injury

- Fatal
- Serious Injury

The blue gradient represents the density of all distracted driving-related crashes.



Available Crash Data - Calendar Year (CY)	CY 2018	CY 2019	CY 2020	CY 2021
Total Crashes	1406	1356	1083	1216
Fatal Crashes	9	4	8	3
Injury Crashes	420	379	278	307
Distracted Driving-Related Fatal Crashes	1	1	1	1
Percent of Distracted Driving-Related Fatal Crashes to Total Fatal Crashes	11%	25%	13%	33%
Distracted Driving-Related Injury Crashes	88	108	70	62
Percent of Distracted Driving-Related Injury Crashes to Total Injury Crashes	21%	28%	25%	20%