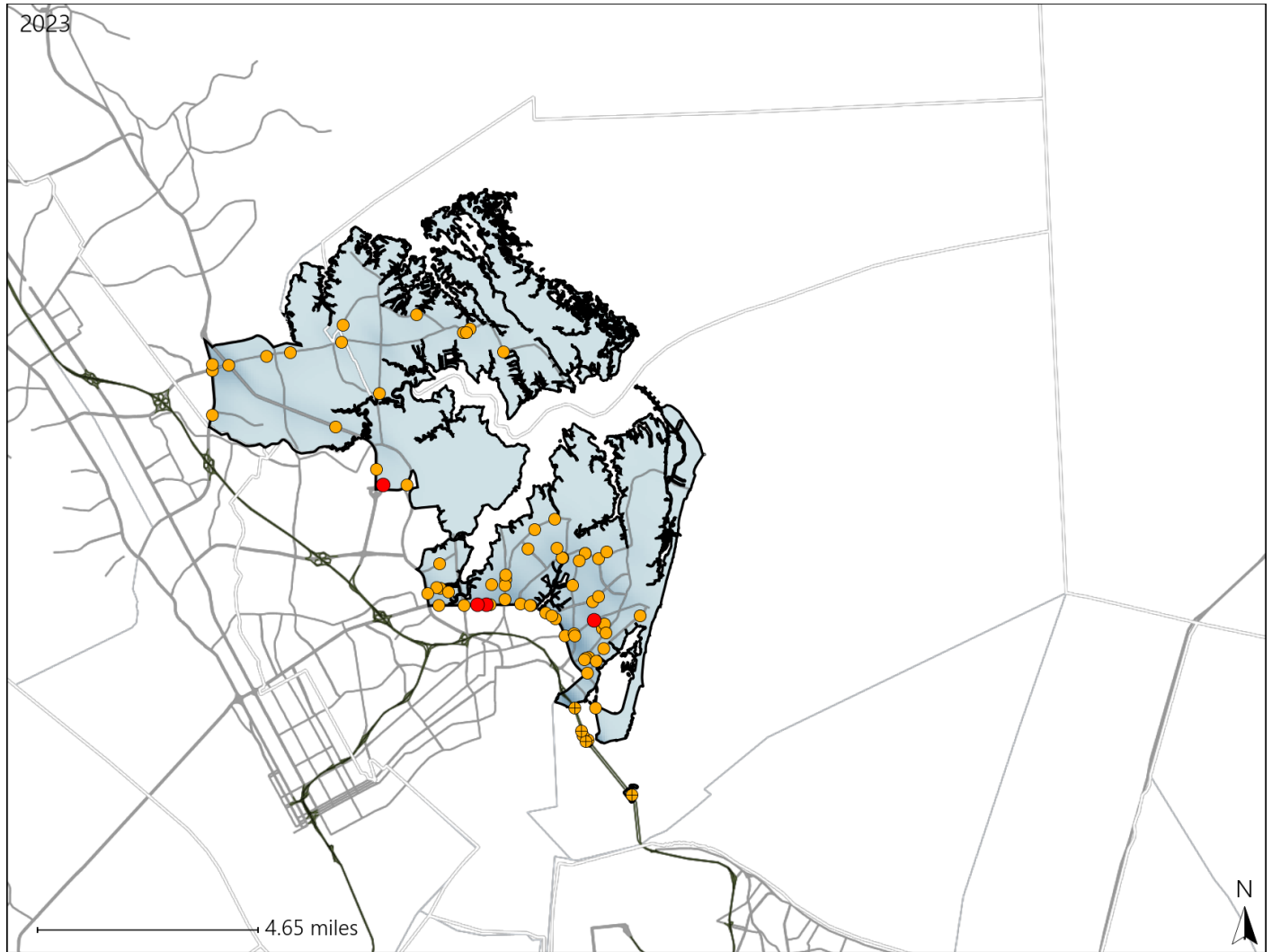


Virginia House District 86 Crash Statistics

Report Generated May, 2024

| | Count | Highest Time Period(s) | Highest Day(s) | Highest Month(s) |
|-------------------------------|-----------|------------------------|--------------------------|------------------|
| Fatal Crashes | 4 | 6:00pm - 8:59pm | Monday • Saturday | April |
| Resulting Fatalities | 4 | (50%) | (50%) | (50%) |
| Serious Injury Crashes | 73 | 3:00pm - 5:59pm | Wednesday | April |
| | | (29%) | (19%) | (14%) |



House District 86 Crashes

Interstate Crashes

- Fatal
- Serious Injury

Non-interstate Crashes

- Fatal
- Serious Injury

The blue gradient represents the density of all crashes.

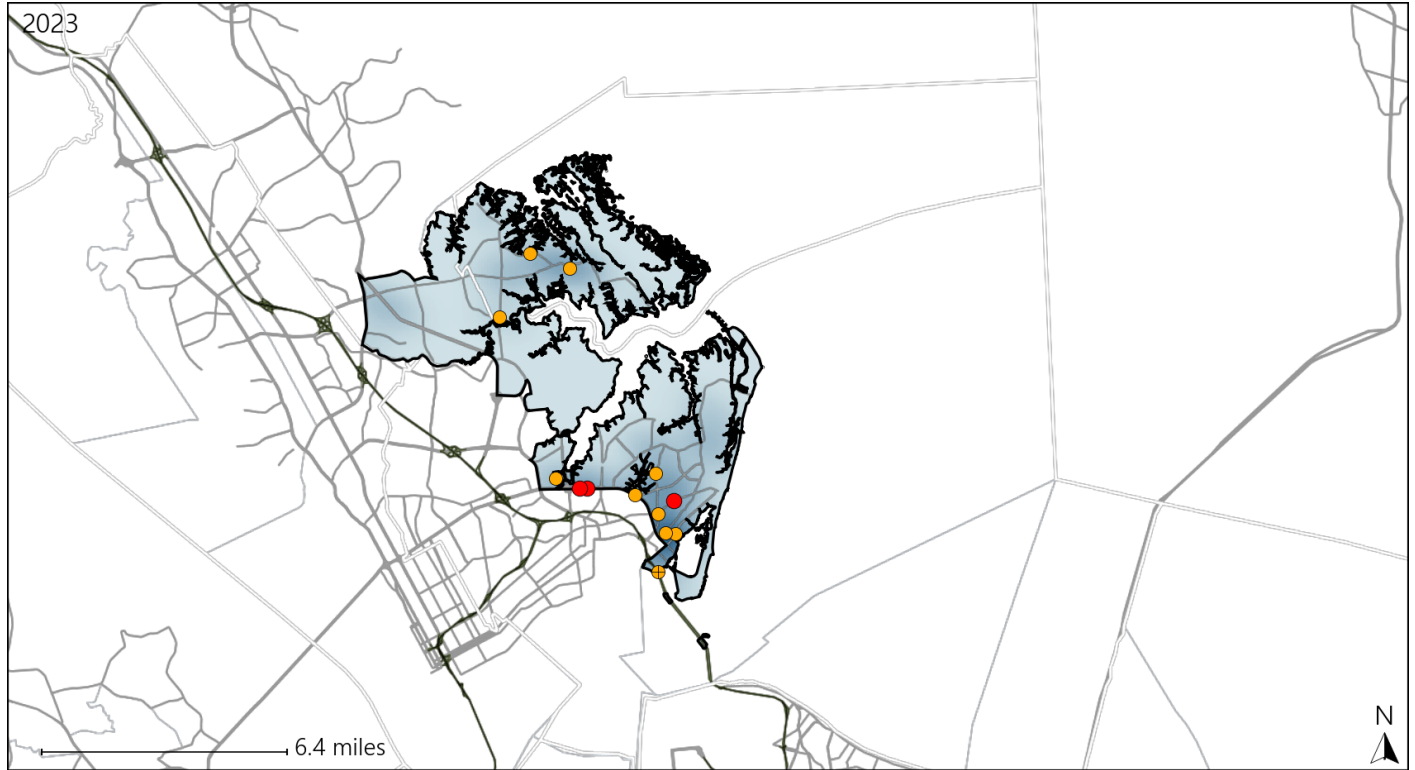


| Available Crash Data - Calendar Year (CY) | CY 2020 | CY 2021 | CY 2022 | CY 2023 |
|---|-------------|-------------|-------------|-------------|
| Total Crashes | 1089 | 1243 | 1082 | 1126 |
| Fatal Crashes | 6 | 1 | 4 | 4 |
| Injury Crashes | 553 | 668 | 500 | 532 |

Virginia House District 86 Alcohol Crash Statistics

Report Generated May, 2024

| | Count | Highest Time Period(s) | Highest Day(s) | Highest Month(s) |
|-------------------------------|-----------|------------------------|--------------------------|---------------------------|
| Fatal Crashes | 3 | 6:00pm - 8:59pm | Monday • Saturday | April |
| Resulting Fatalities | 3 | (67%) | (66%) | (67%) |
| Serious Injury Crashes | 10 | 3:00pm - 5:59pm | Friday • Monday | December • January |
| | | (30%) | (40%) | (40%) |



House District 86 Alcohol-Related Crashes

Interstate Crashes Non-interstate Crashes
 ● Fatal ● Fatal
 ● Serious Injury ● Serious Injury

The blue gradient represents the density of all alcohol-related crashes.

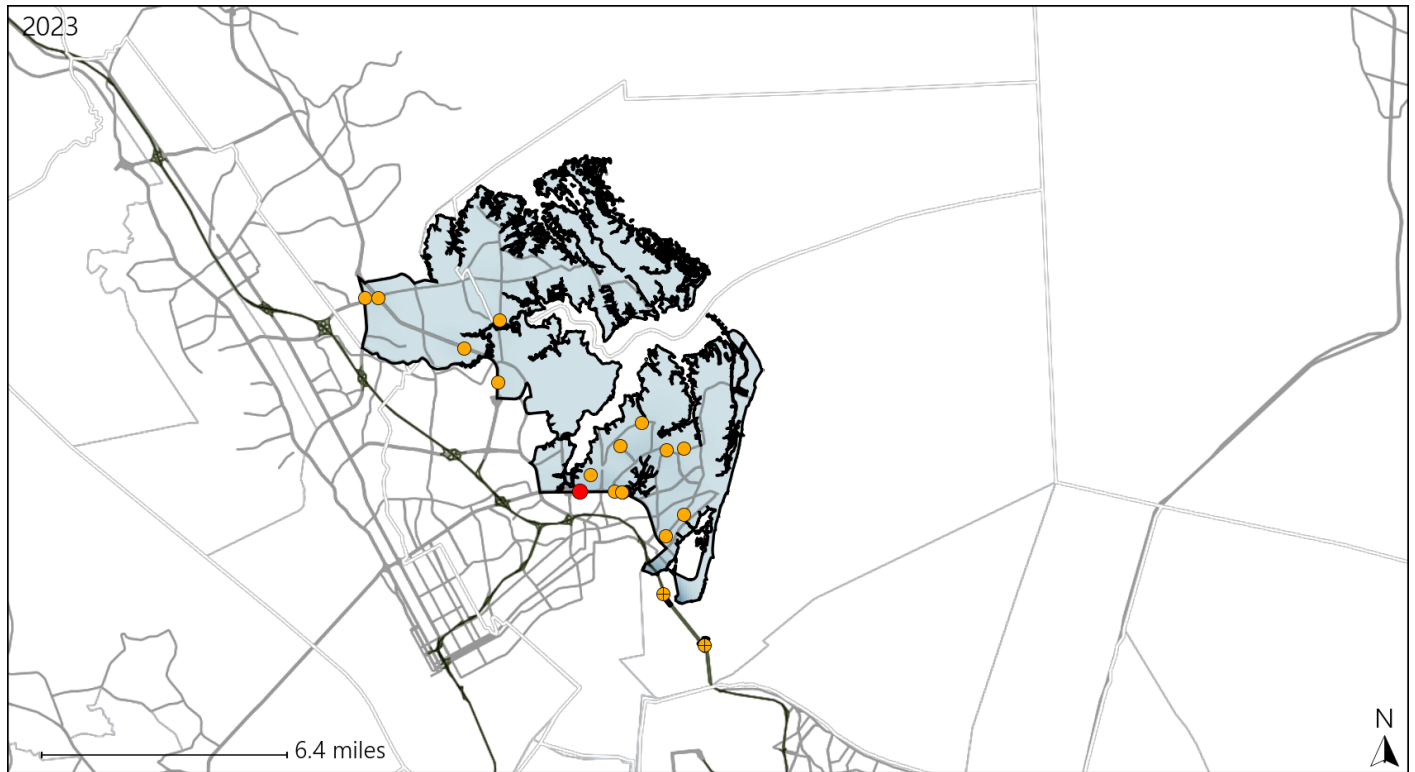


| Available Crash Data - Calendar Year (CY) | CY 2020 | CY 2021 | CY 2022 | CY 2023 |
|---|---------|---------|---------|---------|
| Total Crashes | 1089 | 1243 | 1082 | 1126 |
| Fatal Crashes | 6 | 1 | 4 | 4 |
| Injury Crashes | 553 | 668 | 500 | 532 |
| Alcohol-Related Fatal Crashes | 3 | 0 | 0 | 3 |
| Percent of Alcohol-Related Fatal Crashes to Total Fatal Crashes | 50% | 0% | 0% | 75% |
| Alcohol-Related Injury Crashes | 32 | 50 | 37 | 28 |
| Percent of Alcohol-Related Injury Crashes to Total Injury Crashes | 6% | 7% | 7% | 5% |

Virginia House District 86 Speed Crash Statistics

Report Generated May, 2024

| | Count | Highest Time Period(s) | Highest Day(s) | Highest Month(s) |
|-------------------------------|-----------|--|--------------------------|------------------|
| Fatal Crashes | 1 | 6:00pm - 8:59pm | Monday | April |
| Resulting Fatalities | 1 | (100%) | (100%) | (100%) |
| Serious Injury Crashes | 17 | 3:00pm - 5:59pm 6:00pm - 8:59pm | Saturday • Sunday | January |
| | | (58%) | (36%) | (24%) |



House District 86 Speed-Related Crashes

Interstate Crashes Non-interstate Crashes
 ● Fatal ● Fatal
 ⊕ Serious Injury ⊕ Serious Injury

The blue gradient represents the density of all speed-related crashes.

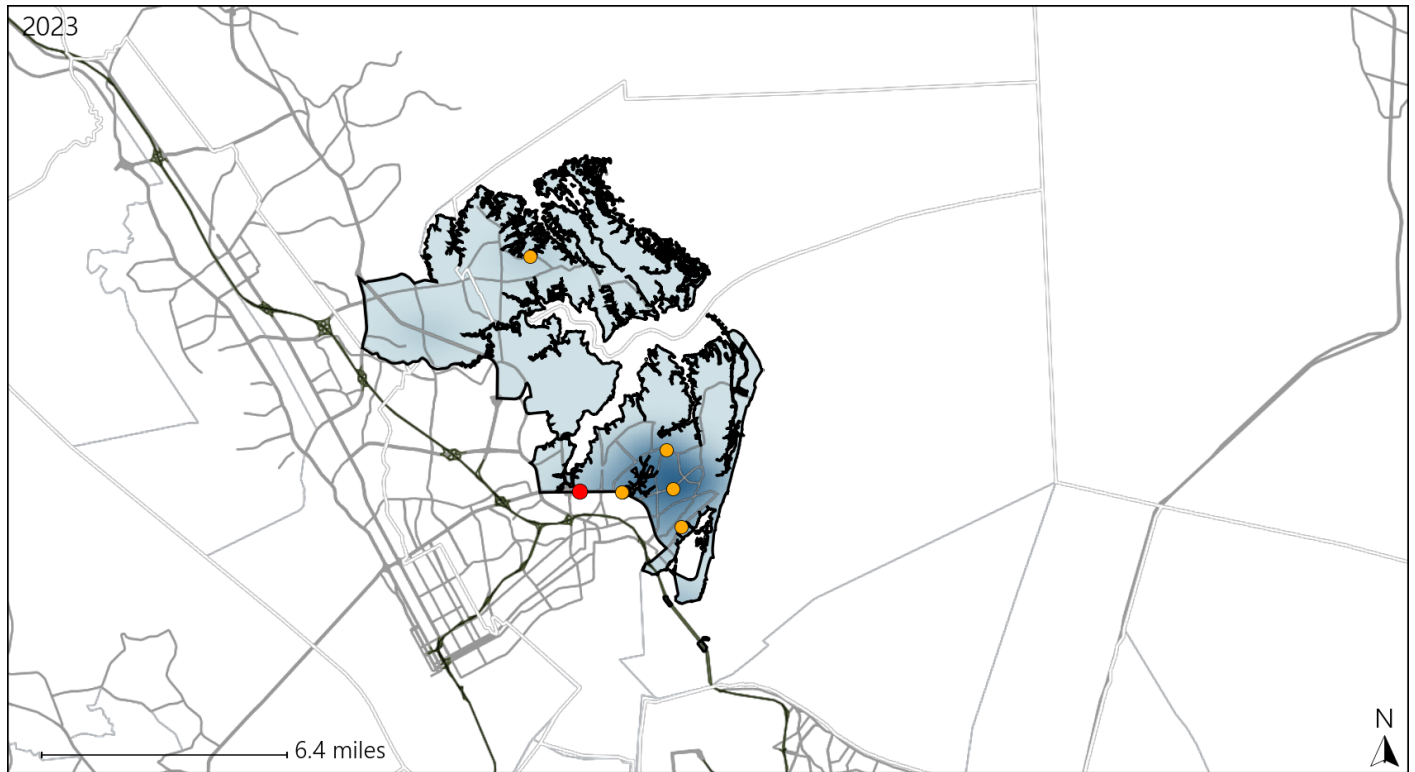


| Available Crash Data - Calendar Year (CY) | CY 2020 | CY 2021 | CY 2022 | CY 2023 |
|---|---------|---------|---------|---------|
| Total Crashes | 1089 | 1243 | 1082 | 1126 |
| Fatal Crashes | 6 | 1 | 4 | 4 |
| Injury Crashes | 553 | 668 | 500 | 532 |
| Speed-Related Fatal Crashes | 3 | 1 | 0 | 1 |
| Percent of Speed-Related Fatal Crashes to Total Fatal Crashes | 50% | 100% | 0% | 25% |
| Speed-Related Injury Crashes | 90 | 85 | 84 | 68 |
| Percent of Speed-Related Injury Crashes to Total Injury Crashes | 16% | 13% | 17% | 13% |

Virginia House District 86 Unrestrained Crash Statistics

Report Generated May, 2024

| | Count | Highest Time Period(s) | Highest Day(s) | Highest Month(s) |
|--------------------------------|----------|---|--------------------------|-----------------------|
| Fatal Crashes | 1 | 6:00pm - 8:59pm | Monday | April |
| Unrestrained Fatalities | 1 | (100%) | (100%) | (100%) |
| Serious Injury Crashes | 6 | 3:00pm - 5:59pm 9:00am - 11:59am | Friday • Saturday | April • August |
| | | (66%) | (66%) | (34%) |



House District 86 Unrestrained-Related Crashes

- | | |
|--------------------|------------------------|
| Interstate Crashes | Non-interstate Crashes |
| ● Fatal | ● Fatal |
| ⊕ Serious Injury | ⊕ Serious Injury |

The blue gradient represents the density of all unrestrained-related crashes.

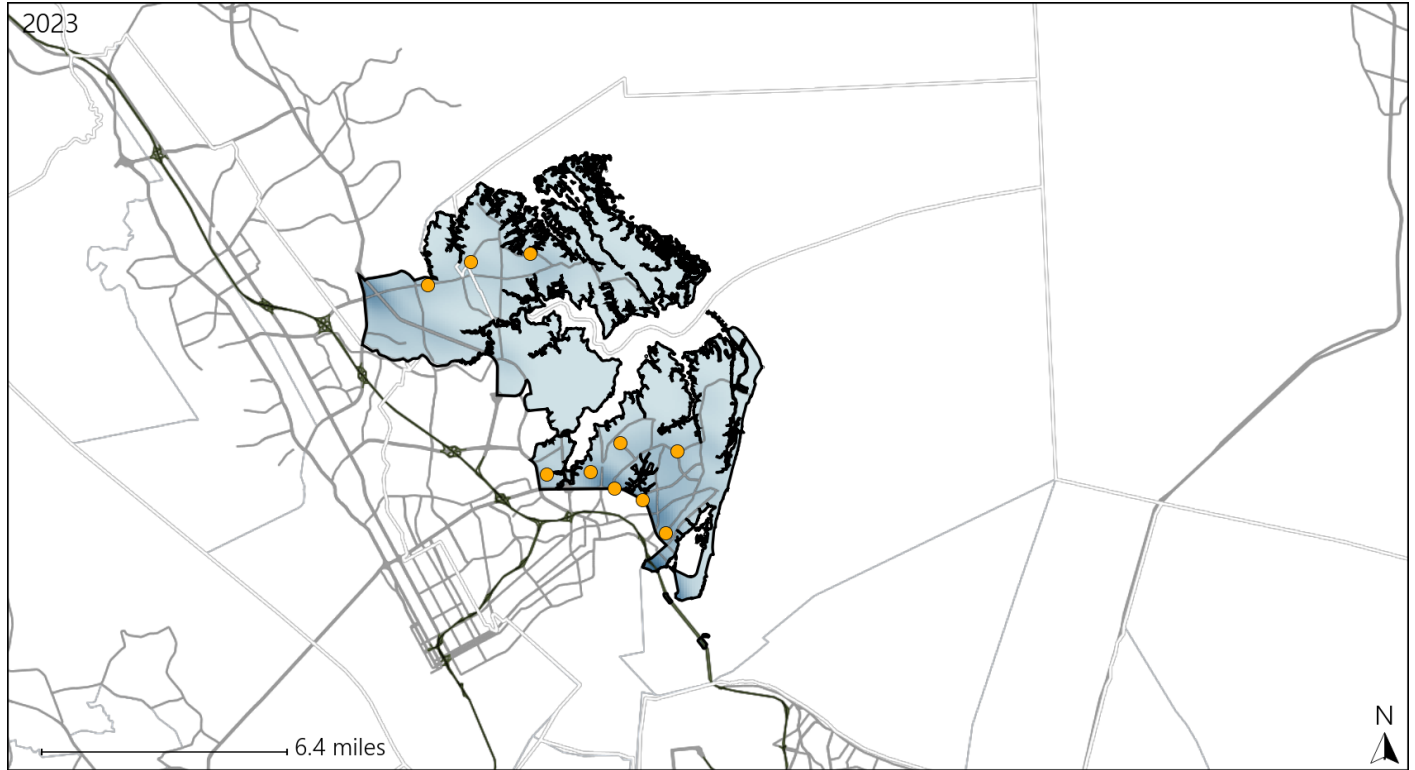


| Available Crash Data - Calendar Year (CY) | CY 2020 | CY 2021 | CY 2022 | CY 2023 |
|---|-------------|-------------|-------------|-------------|
| Total Crashes | 1089 | 1243 | 1082 | 1126 |
| Fatalities | 6 | 1 | 5 | 4 |
| Injuries | 950 | 1129 | 840 | 951 |
| Unrestrained Fatalities | 4 | 0 | 0 | 1 |
| Percent of Unrestrained Fatalities to Total Fatalities | 67% | 0% | 0% | 25% |
| Unrestrained Injuries | 27 | 35 | 31 | 26 |
| Percent of Unrestrained Injuries to Total Injuries | 3% | 3% | 4% | 3% |

Virginia House District 86 Distracted Driving Crash Statistics

Report Generated May, 2024

| | Count | Highest Time Period(s) | Highest Day(s) | Highest Month(s) |
|-------------------------------|-------|--------------------------|-------------------|------------------|
| Fatal Crashes | 0 | - | - | - |
| Resulting Fatalities | 0 | - | - | - |
| Serious Injury Crashes | 10 | 3:00pm - 5:59pm (40%) | Saturday (30%) | May (40%) |



House District 86 Distracted Driving-Related Crashes

- | | |
|--------------------|------------------------|
| Interstate Crashes | Non-interstate Crashes |
| ● Fatal | ● Fatal |
| ● Serious Injury | ● Serious Injury |

The blue gradient represents the density of all distracted driving-related crashes.



| Available Crash Data - Calendar Year (CY) | CY 2020 | CY 2021 | CY 2022 | CY 2023 |
|--|---------|---------|---------|---------|
| Total Crashes | 1089 | 1243 | 1082 | 1126 |
| Fatal Crashes | 6 | 1 | 4 | 4 |
| Injury Crashes | 553 | 668 | 500 | 532 |
| Distracted Driving-Related Fatal Crashes | 1 | 0 | 1 | 0 |
| Percent of Distracted Driving-Related Fatal Crashes to Total Fatal Crashes | 17% | 0% | 25% | 0% |
| Distracted Driving-Related Injury Crashes | 110 | 138 | 86 | 81 |
| Percent of Distracted Driving-Related Injury Crashes to Total Injury Crashes | 20% | 21% | 17% | 15% |