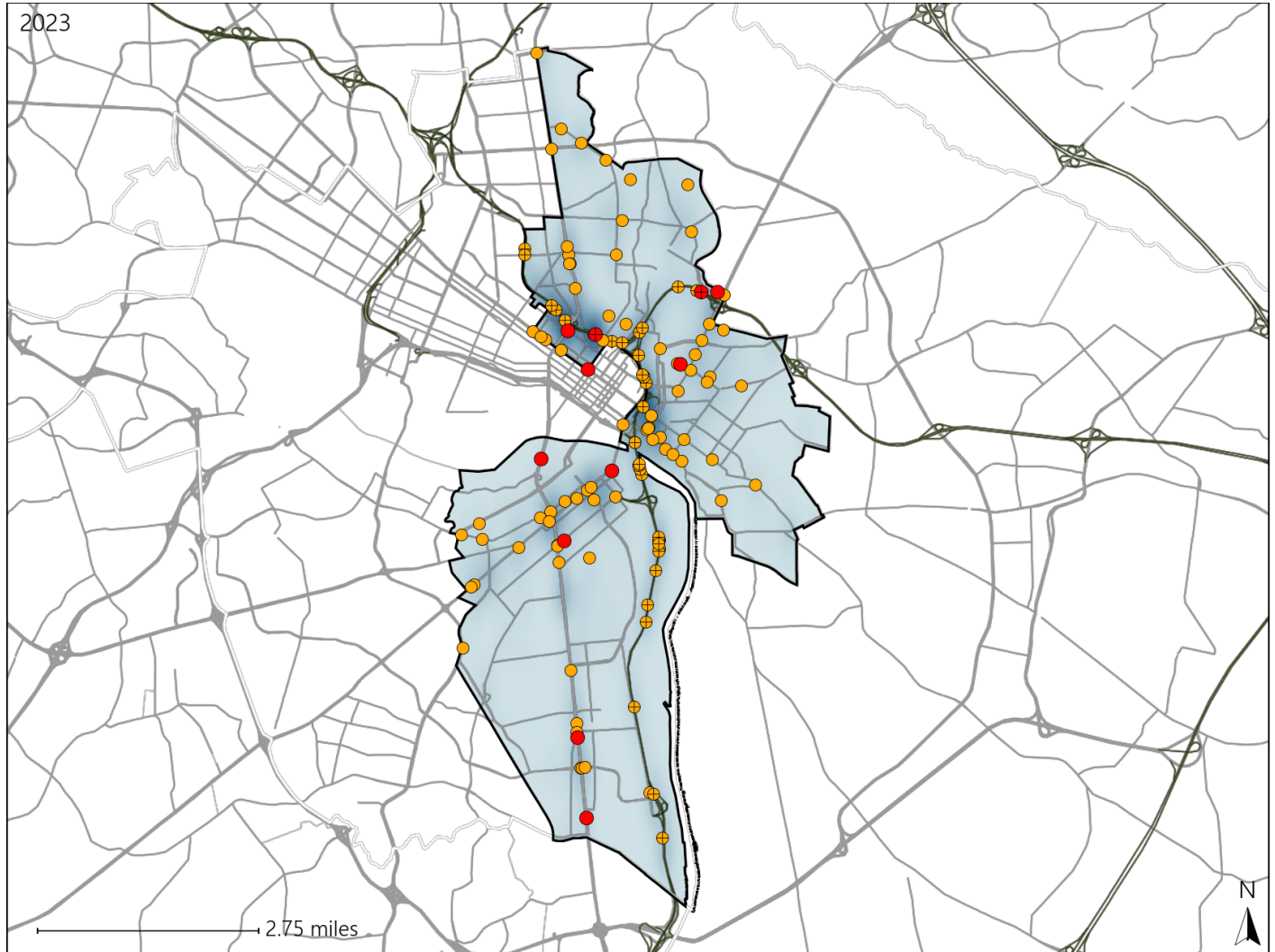


Virginia House District 79 Crash Statistics

Report Generated May, 2024

	Count	Highest Time Period(s)	Highest Day(s)	Highest Month(s)
Fatal Crashes	11	6:00am - 8:59am	Friday	April • August
Resulting Fatalities	11	Noon - 2:59pm (54%)	(27%)	(36%)
Serious Injury Crashes	115	3:00pm - 5:59pm (27%)	Saturday (19%)	May (14%)



House District 79 Crashes

Interstate Crashes

- Fatal
- Serious Injury

Non-interstate Crashes

- Fatal
- Serious Injury

The blue gradient represents the density of all crashes.

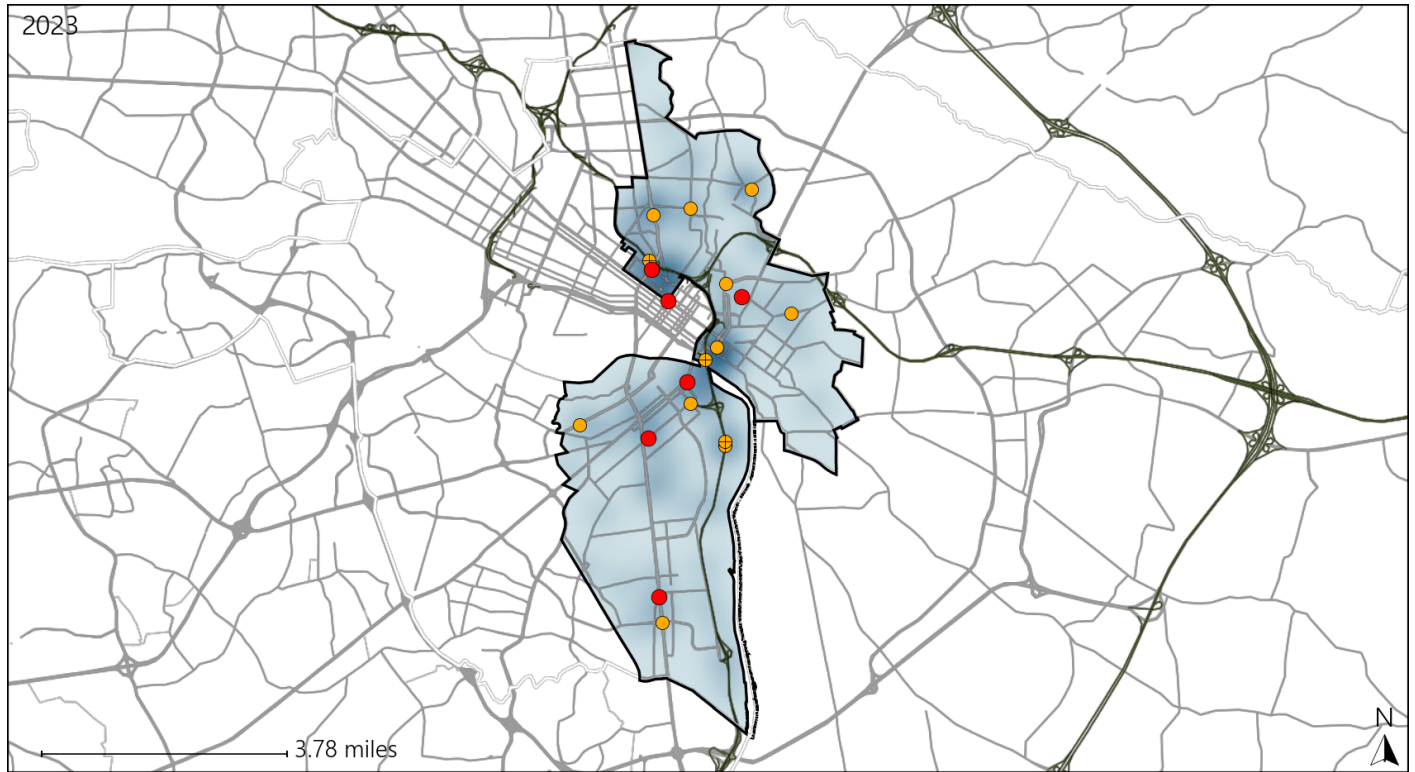


Available Crash Data - Calendar Year (CY)	CY 2020	CY 2021	CY 2022	CY 2023
Total Crashes	2434	2660	2727	2575
Fatal Crashes	14	6	21	11
Injury Crashes	758	805	810	867

Virginia House District 79 Alcohol Crash Statistics

Report Generated May, 2024

	Count	Highest Time Period(s)	Highest Day(s)	Highest Month(s)
Fatal Crashes	6	Midnight - 2:59am	Friday • Sunday	April • August
Resulting Fatalities	6	(33%)	(66%)	(34%)
Serious Injury Crashes	13	Midnight - 2:59am	Saturday	March
		(31%)	(38%)	(23%)



House District 79 Alcohol-Related Crashes

Interstate Crashes Non-interstate Crashes
 ● Fatal ● Fatal
 ● Serious Injury ● Serious Injury

The blue gradient represents the density of all alcohol-related crashes.

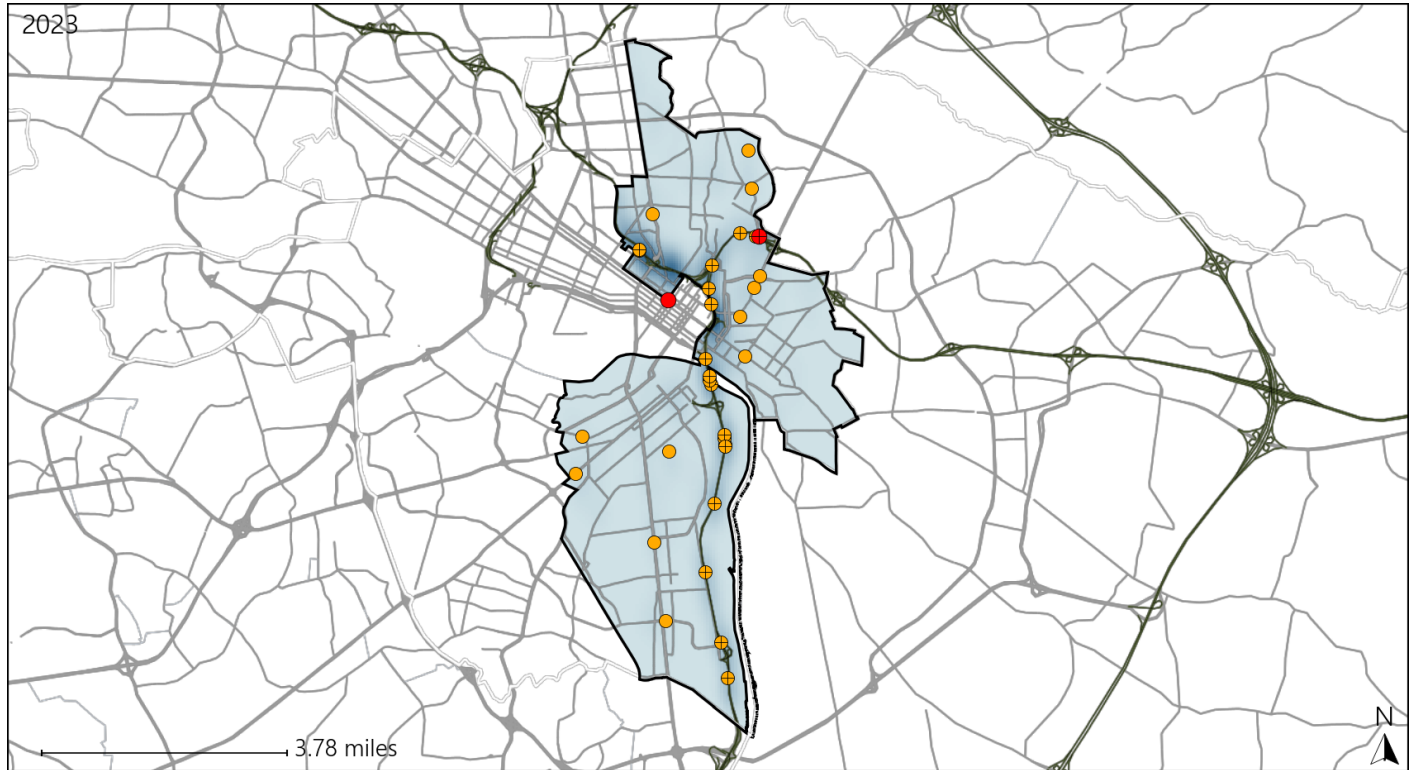


Available Crash Data - Calendar Year (CY)	CY 2020	CY 2021	CY 2022	CY 2023
Total Crashes	2434	2660	2727	2575
Fatal Crashes	14	6	21	11
Injury Crashes	758	805	810	867
Alcohol-Related Fatal Crashes	5	1	4	6
Percent of Alcohol-Related Fatal Crashes to Total Fatal Crashes	36%	17%	19%	55%
Alcohol-Related Injury Crashes	36	43	40	47
Percent of Alcohol-Related Injury Crashes to Total Injury Crashes	5%	5%	5%	5%

Virginia House District 79 Speed Crash Statistics

Report Generated May, 2024

	Count	Highest Time Period(s)	Highest Day(s)	Highest Month(s)
Fatal Crashes	2	6:00am - 8:59am	Monday - Wednesday	May - October
Resulting Fatalities	2	9:00pm - 11:59pm (100%)	(100%)	(100%)
Serious Injury Crashes	32	3:00pm - 5:59pm (31%)	Saturday (31%)	May (19%)



House District 79 Speed-Related Crashes

Interstate Crashes Non-interstate Crashes
 ● Fatal ● Fatal
 ● Serious Injury ● Serious Injury

The blue gradient represents the density of all speed-related crashes.

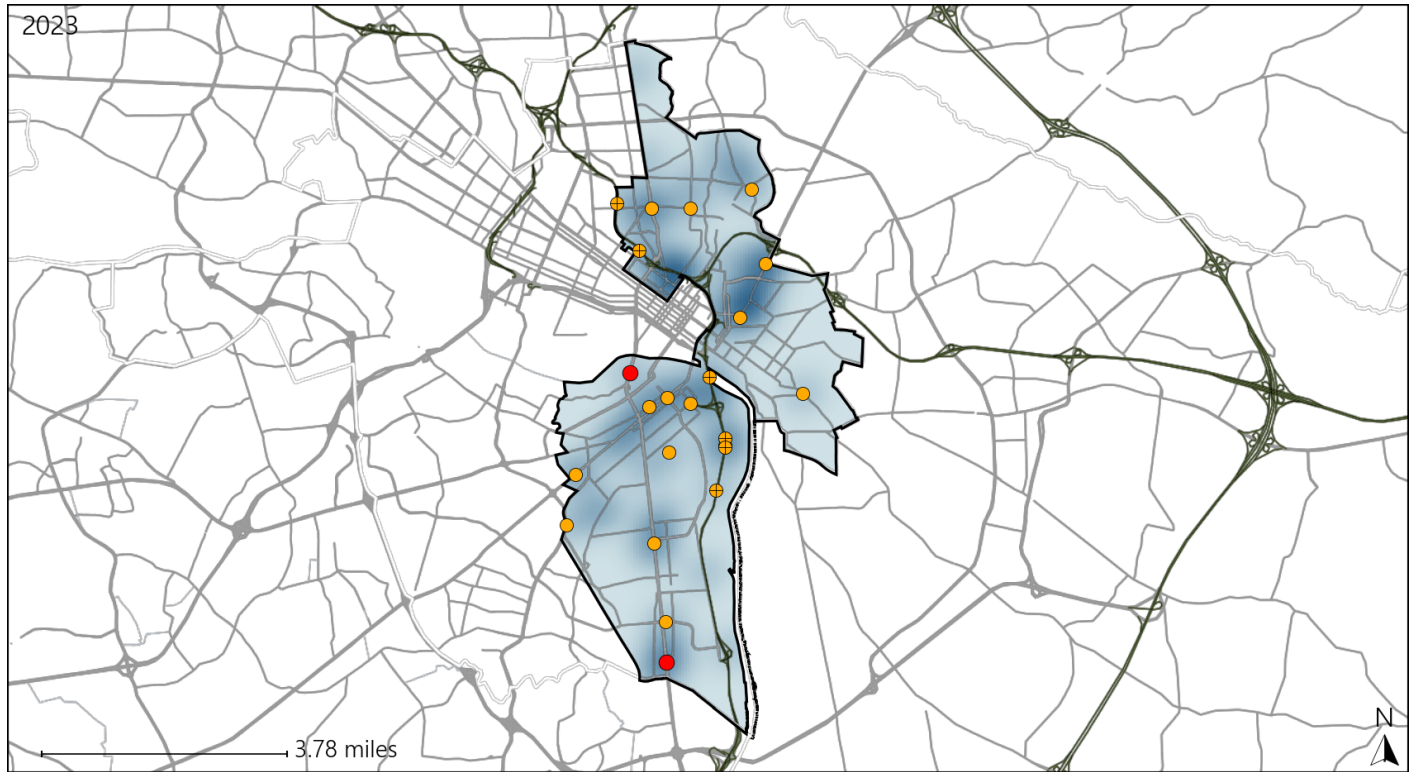


Available Crash Data - Calendar Year (CY)	CY 2020	CY 2021	CY 2022	CY 2023
Total Crashes	2434	2660	2727	2575
Fatal Crashes	14	6	21	11
Injury Crashes	758	805	810	867
Speed-Related Fatal Crashes	5	2	8	2
Percent of Speed-Related Fatal Crashes to Total Fatal Crashes	36%	33%	38%	18%
Speed-Related Injury Crashes	126	157	181	159
Percent of Speed-Related Injury Crashes to Total Injury Crashes	17%	20%	22%	18%

Virginia House District 79 Unrestrained Crash Statistics

Report Generated May, 2024

	Count	Highest Time Period(s)	Highest Day(s)	Highest Month(s)
Fatal Crashes	2	Noon - 2:59pm	Tuesday • Wednesday	April • August
Unrestrained Fatalities	2	(100%)	(100%)	(100%)
Serious Injury Crashes	21	3:00pm - 5:59pm	Saturday • Sunday	May
		(33%)	(58%)	(19%)



House District 79 Unrestrained-Related Crashes

- | | |
|--------------------|------------------------|
| Interstate Crashes | Non-interstate Crashes |
| Fatal | Fatal |
| Serious Injury | Serious Injury |

The blue gradient represents the density of all unrestrained-related crashes.

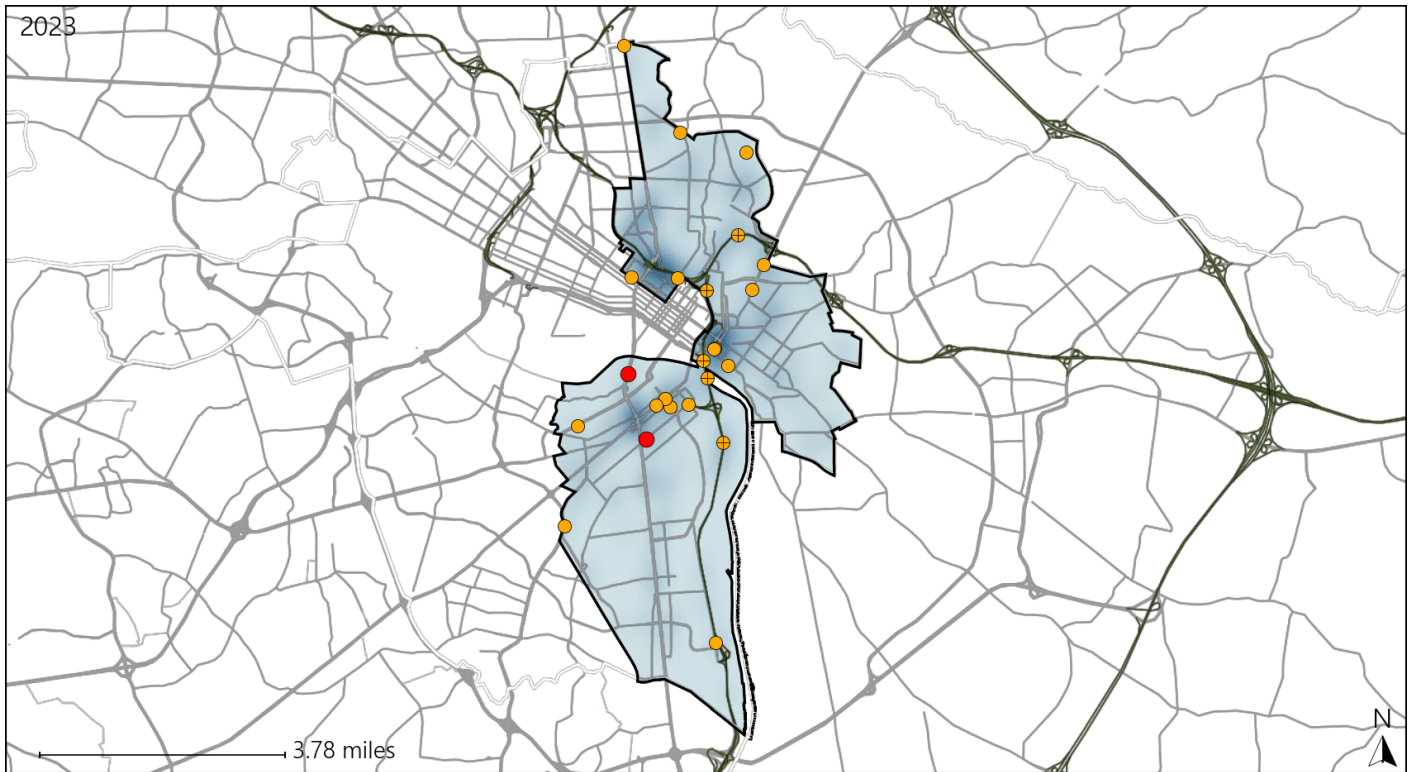


Available Crash Data - Calendar Year (CY)	CY 2020	CY 2021	CY 2022	CY 2023
Total Crashes	2434	2660	2727	2575
Fatalities	14	6	22	11
Injuries	1235	1382	1370	1444
Unrestrained Fatalities	6	2	10	2
Percent of Unrestrained Fatalities to Total Fatalities	43%	33%	45%	18%
Unrestrained Injuries	85	82	91	84
Percent of Unrestrained Injuries to Total Injuries	7%	6%	7%	6%

Virginia House District 79 Distracted Driving Crash Statistics

Report Generated May, 2024

	Count	Highest Time Period(s)	Highest Day(s)	Highest Month(s)
Fatal Crashes	2	Noon - 2:59pm	Friday • Tuesday	April • January
Resulting Fatalities	2	(100%)	(100%)	(100%)
Serious Injury Crashes	22	3:00pm - 5:59pm 6:00pm - 8:59pm	Saturday • Wednesday	December • May
		(54%)	(54%)	(28%)



House District 79 Distracted Driving-Related Crashes

- | | |
|--------------------|------------------------|
| Interstate Crashes | Non-interstate Crashes |
| ● Fatal | ● Fatal |
| ⊕ Serious Injury | ⊕ Serious Injury |

The blue gradient represents the density of all distracted driving-related crashes.



Available Crash Data - Calendar Year (CY)	CY 2020	CY 2021	CY 2022	CY 2023
Total Crashes	2434	2660	2727	2575
Fatal Crashes	14	6	21	11
Injury Crashes	758	805	810	867
Distracted Driving-Related Fatal Crashes	2	2	0	2
Percent of Distracted Driving-Related Fatal Crashes to Total Fatal Crashes	14%	33%	0%	18%
Distracted Driving-Related Injury Crashes	137	141	145	150
Percent of Distracted Driving-Related Injury Crashes to Total Injury Crashes	18%	18%	18%	17%