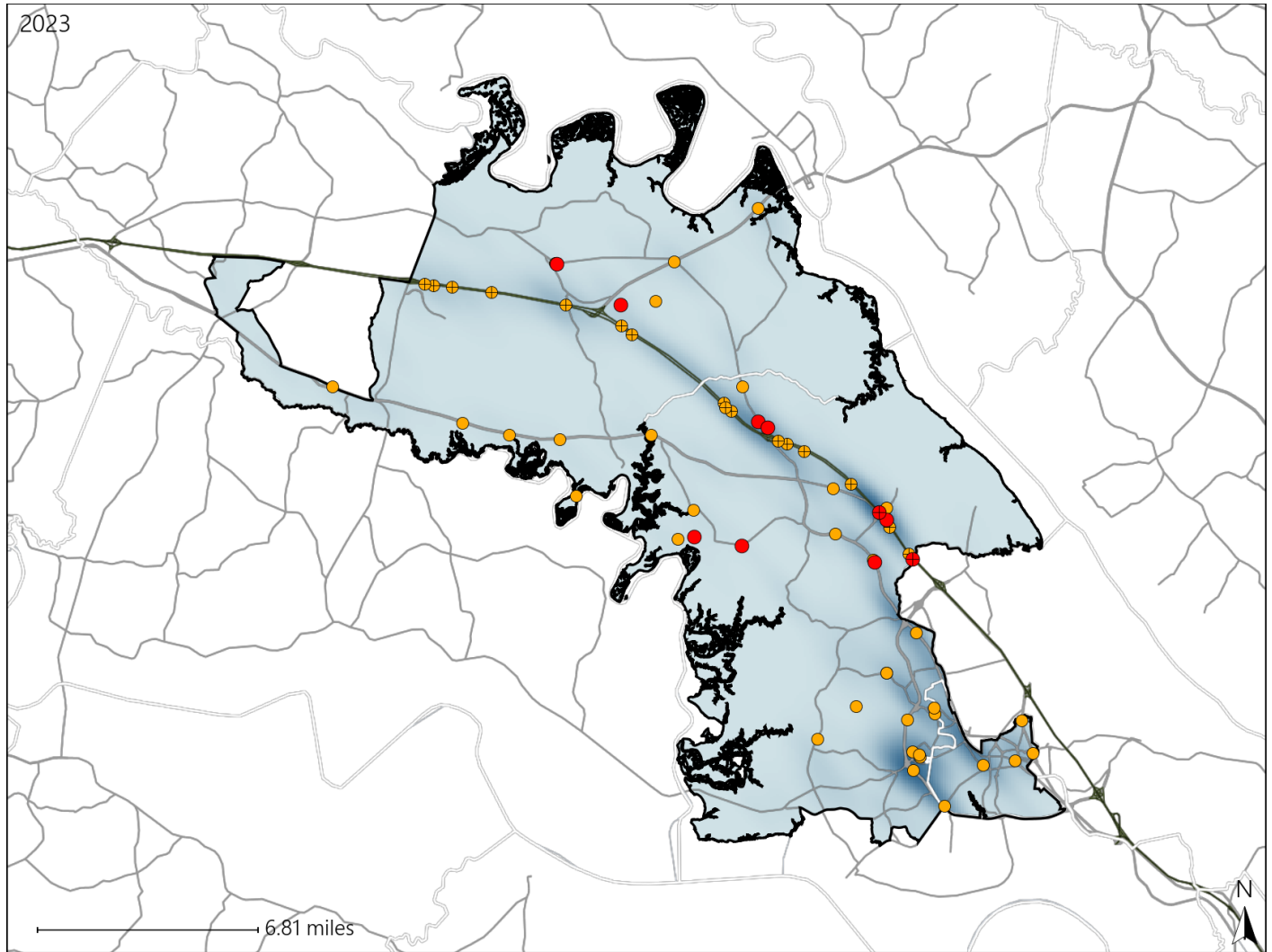


Virginia House District 71 Crash Statistics

Report Generated May, 2024

	Count	Highest Time Period(s)	Highest Day(s)	Highest Month(s)
Fatal Crashes	10	3:00pm - 5:59pm	Sunday	August
Resulting Fatalities	11	(40%)	(30%)	(30%)
Serious Injury Crashes	51	3:00pm - 5:59pm	Monday • Sunday	July
		(25%)	(36%)	(24%)



House District 71 Crashes

Interstate Crashes

- Fatal
- Serious Injury

Non-interstate Crashes

- Fatal
- Serious Injury

The blue gradient represents the density of all crashes.

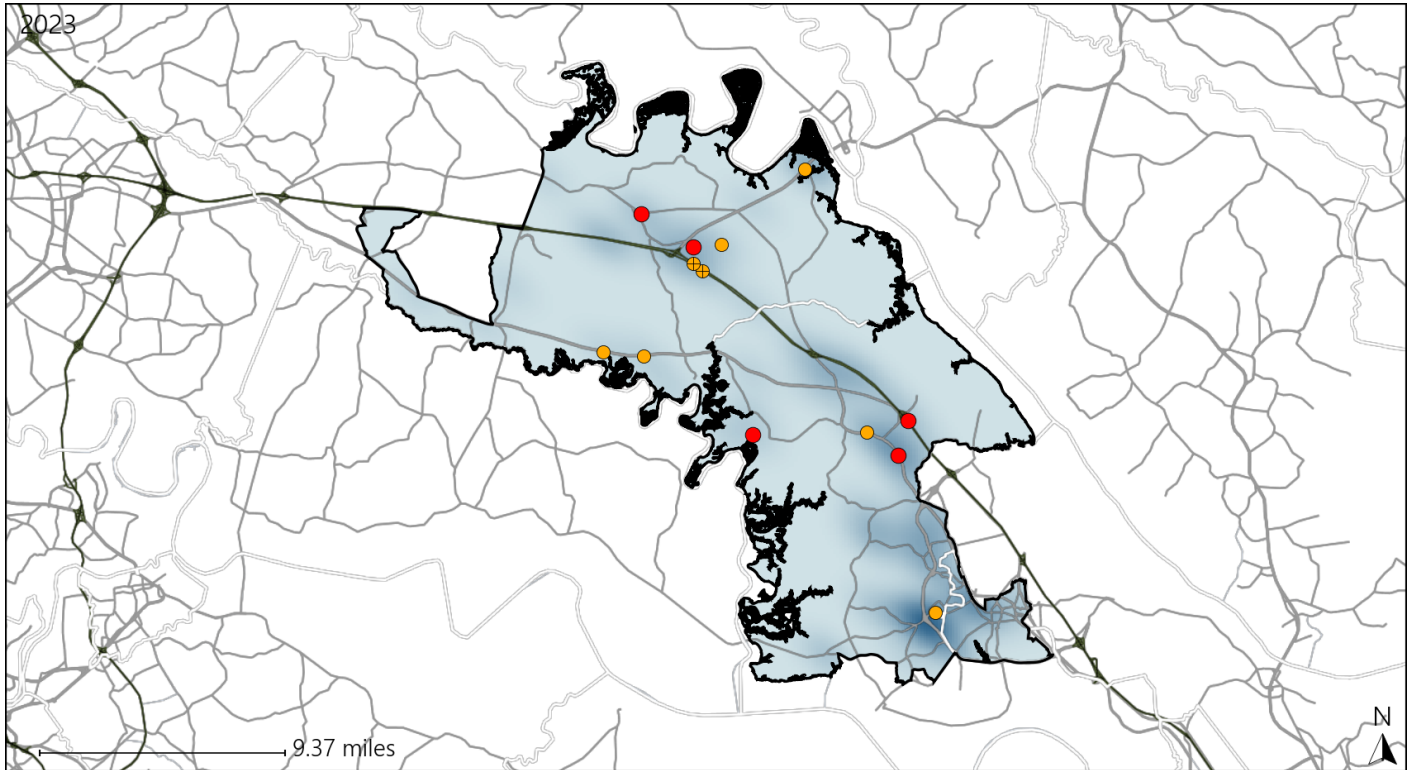


Available Crash Data - Calendar Year (CY)	CY 2020	CY 2021	CY 2022	CY 2023
Total Crashes	915	1032	1012	1160
Fatal Crashes	9	17	11	10
Injury Crashes	402	404	388	472

Virginia House District 71 Alcohol Crash Statistics

Report Generated May, 2024

	Count	Highest Time Period(s)	Highest Day(s)	Highest Month(s)
Fatal Crashes	5	3:00pm - 5:59pm	Saturday • Sunday	August
Resulting Fatalities	6	Midnight - 2:59am (80%)	(80%)	(40%)
Serious Injury Crashes	9	6:00pm - 8:59pm (33%)	Tuesday (33%)	April • July (66%)



House District 71 Alcohol-Related Crashes

Interstate Crashes

Non-interstate Crashes

- Fatal
- Serious Injury

- Fatal
- Serious Injury

The blue gradient represents the density of all alcohol-related crashes.

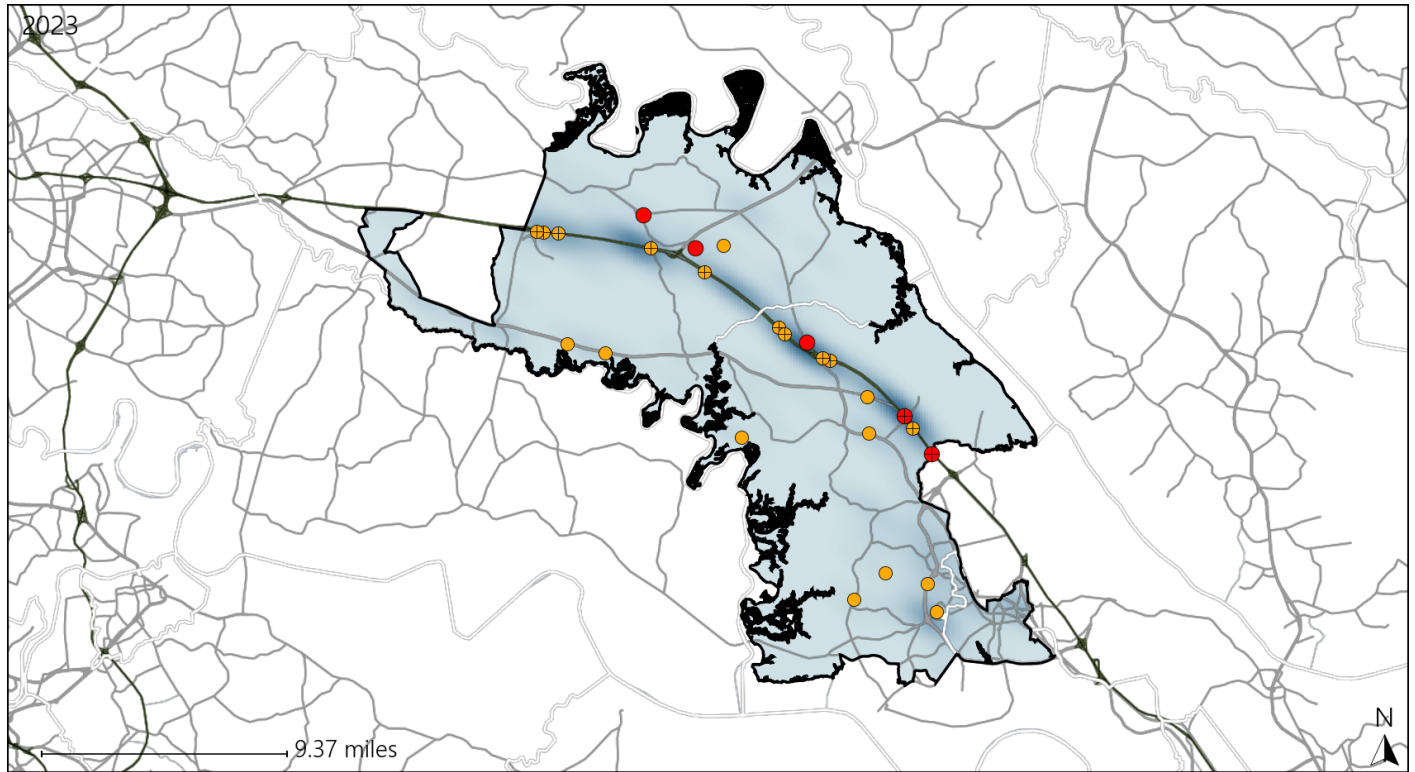


Available Crash Data - Calendar Year (CY)	CY 2020	CY 2021	CY 2022	CY 2023
Total Crashes	915	1032	1012	1160
Fatal Crashes	9	17	11	10
Injury Crashes	402	404	388	472
Alcohol-Related Fatal Crashes	1	3	1	5
Percent of Alcohol-Related Fatal Crashes to Total Fatal Crashes	11%	18%	9%	50%
Alcohol-Related Injury Crashes	38	39	33	42
Percent of Alcohol-Related Injury Crashes to Total Injury Crashes	9%	10%	9%	9%

Virginia House District 71 Speed Crash Statistics

Report Generated May, 2024

	Count	Highest Time Period(s)	Highest Day(s)	Highest Month(s)
Fatal Crashes	5	3:00pm - 5:59pm	Sunday	April • August
Resulting Fatalities	6	(40%)	(40%)	(40%)
Serious Injury Crashes	21	3:00pm - 5:59pm	Thursday	July
		(29%)	(29%)	(24%)



House District 71 Speed-Related Crashes

Interstate Crashes Non-interstate Crashes
 ● Fatal ● Fatal
 ⊕ Serious Injury ⊕ Serious Injury

The blue gradient represents the density of all speed-related crashes.

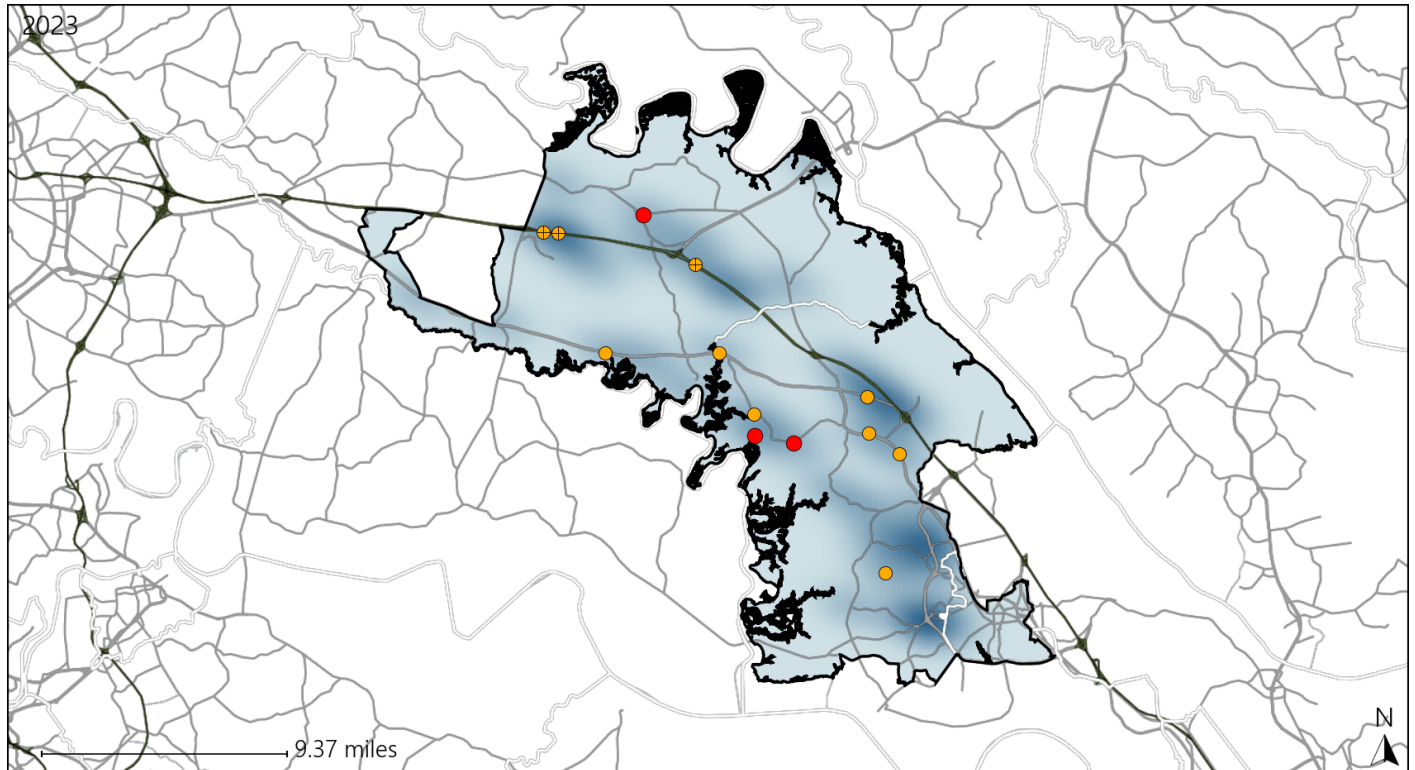


Available Crash Data - Calendar Year (CY)	CY 2020	CY 2021	CY 2022	CY 2023
Total Crashes	915	1032	1012	1160
Fatal Crashes	9	17	11	10
Injury Crashes	402	404	388	472
Speed-Related Fatal Crashes	2	6	8	5
Percent of Speed-Related Fatal Crashes to Total Fatal Crashes	22%	35%	73%	50%
Speed-Related Injury Crashes	65	79	71	103
Percent of Speed-Related Injury Crashes to Total Injury Crashes	16%	20%	18%	22%

Virginia House District 71 Unrestrained Crash Statistics

Report Generated May, 2024

	Count	Highest Time Period(s)	Highest Day(s)	Highest Month(s)
Fatal Crashes	3	3:00pm - 5:59pm	Monday	August • November
Unrestrained Fatalities	3	(67%)	(67%)	(66%)
Serious Injury Crashes	10	3:00pm - 5:59pm	Sunday	July
		(30%)	(40%)	(40%)



House District 71 Unrestrained-Related Crashes

Interstate Crashes

- Fatal
- Serious Injury

Non-interstate Crashes

- Fatal
- Serious Injury

The blue gradient represents the density of all unrestrained-related crashes.

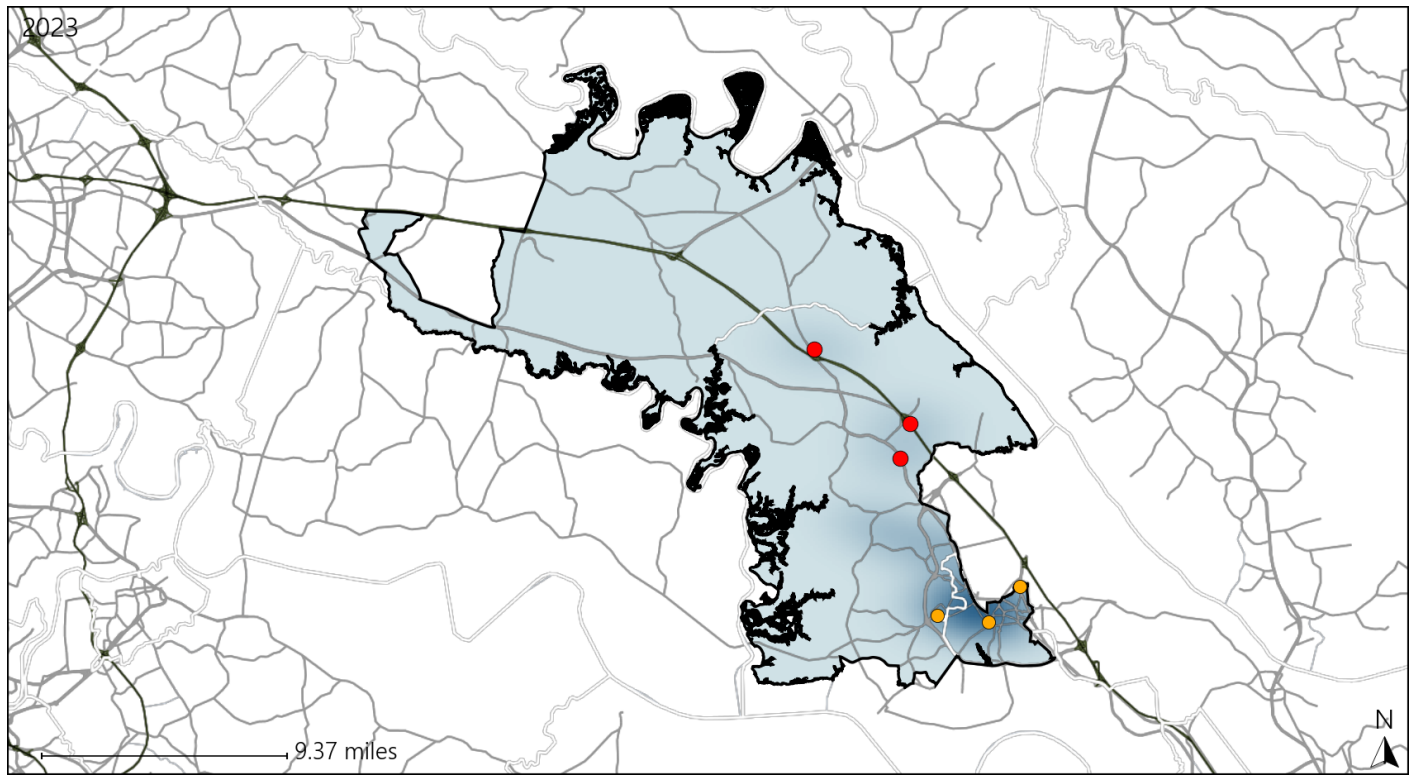


Available Crash Data - Calendar Year (CY)	CY 2020	CY 2021	CY 2022	CY 2023
Total Crashes	915	1032	1012	1160
Fatalities	11	21	12	11
Injuries	634	642	601	785
Unrestrained Fatalities	3	7	4	3
Percent of Unrestrained Fatalities to Total Fatalities	27%	33%	33%	27%
Unrestrained Injuries	24	27	29	48
Percent of Unrestrained Injuries to Total Injuries	4%	4%	5%	6%

Virginia House District 71 Pedestrian Crash Statistics

Report Generated May, 2024

	Count	Highest Time Period(s)	Highest Day(s)	Highest Month(s)
Fatal Crashes	3	9:00am - 11:59am	Saturday • Sunday	April • August
Pedestrian Fatalities	3	9:00pm - 11:59pm (66%)	(66%)	(66%)
Serious Injury Crashes	3	3:00am - 5:59am 6:00am - 8:59am (66%)	Monday • Thursday (66%)	October (67%)



House District 71 Pedestrian-Related Crashes

- | | |
|--------------------|------------------------|
| Interstate Crashes | Non-interstate Crashes |
| ● Fatal | ● Fatal |
| ● Serious Injury | ● Serious Injury |

The blue gradient represents the density of all pedestrian-related crashes.

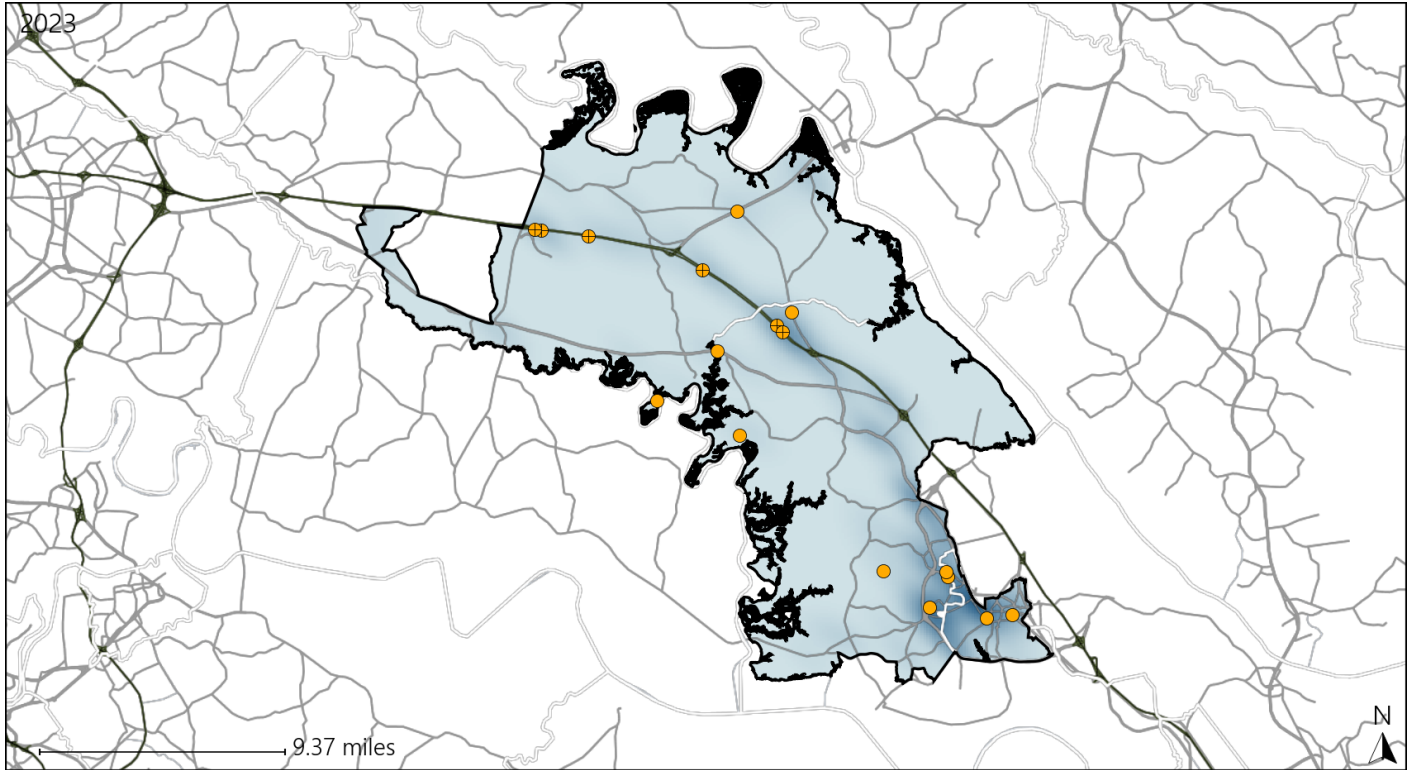


Available Crash Data - Calendar Year (CY)	CY 2020	CY 2021	CY 2022	CY 2023
Total Crashes	915	1032	1012	1160
Fatal Crashes	9	17	11	10
Injury Crashes	402	404	388	472
Pedestrian-Related Fatal Crashes	1	2	0	3
Percent of Pedestrian-Related Fatal Crashes to Total Fatal Crashes	11%	12%	0%	30%
Pedestrian-Related Injury Crashes	8	6	6	12
Percent of Pedestrian-Related Injury Crashes to Total Injury Crashes	2%	1%	2%	3%

Virginia House District 71 Distracted Driving Crash Statistics

Report Generated May, 2024

	Count	Highest Time Period(s)	Highest Day(s)	Highest Month(s)
Fatal Crashes	0	-	-	-
Resulting Fatalities	0	-	-	-
Serious Injury Crashes	17	3:00pm - 5:59pm (24%)	Monday • Thursday (48%)	July (24%)



House District 71 Distracted Driving-Related Crashes

- | | |
|--------------------|------------------------|
| Interstate Crashes | Non-interstate Crashes |
| ● Fatal | ● Fatal |
| ● Serious Injury | ● Serious Injury |

The blue gradient represents the density of all distracted driving-related crashes.



Available Crash Data - Calendar Year (CY)	CY 2020	CY 2021	CY 2022	CY 2023
Total Crashes	915	1032	1012	1160
Fatal Crashes	9	17	11	10
Injury Crashes	402	404	388	472
Distracted Driving-Related Fatal Crashes	2	1	0	0
Percent of Distracted Driving-Related Fatal Crashes to Total Fatal Crashes	22%	6%	0%	0%
Distracted Driving-Related Injury Crashes	76	92	62	75
Percent of Distracted Driving-Related Injury Crashes to Total Injury Crashes	19%	23%	16%	16%