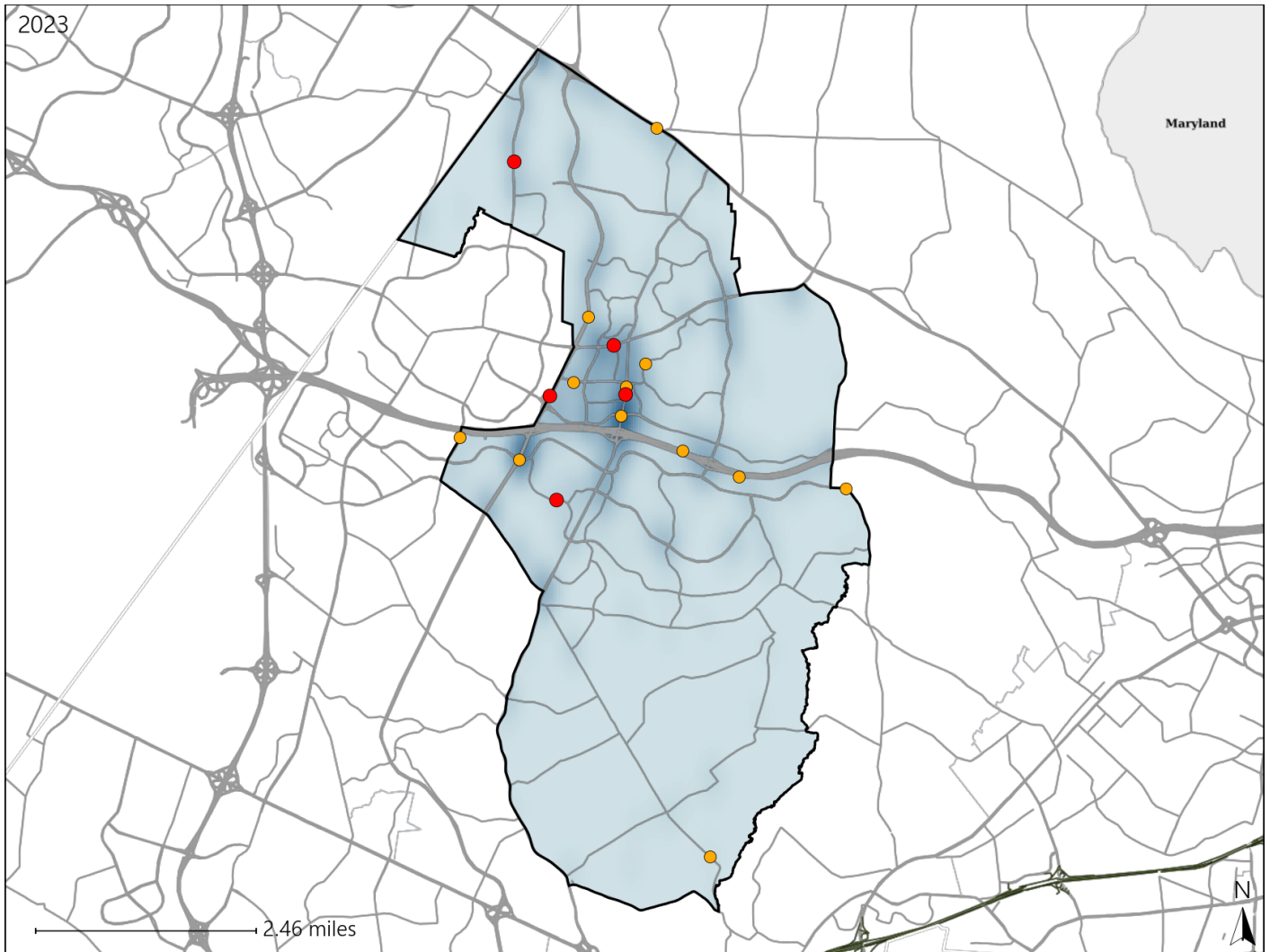


Virginia House District 7 Crash Statistics

Report Generated May, 2024

	Count	Highest Time Period(s)	Highest Day(s)	Highest Month(s)
Fatal Crashes	5	6:00pm - 8:59pm	Friday • Monday	August • December
Resulting Fatalities	5	(60%)	(80%)	(40%)
Serious Injury Crashes	12	6:00pm - 8:59pm 9:00am - 11:59am	Monday • Sunday	August • June
		(50%)	(50%)	(34%)



House District 7 Crashes

Interstate Crashes

- Fatal
- Serious Injury

Non-interstate Crashes

- Fatal
- Serious Injury

The blue gradient represents the density of all crashes.

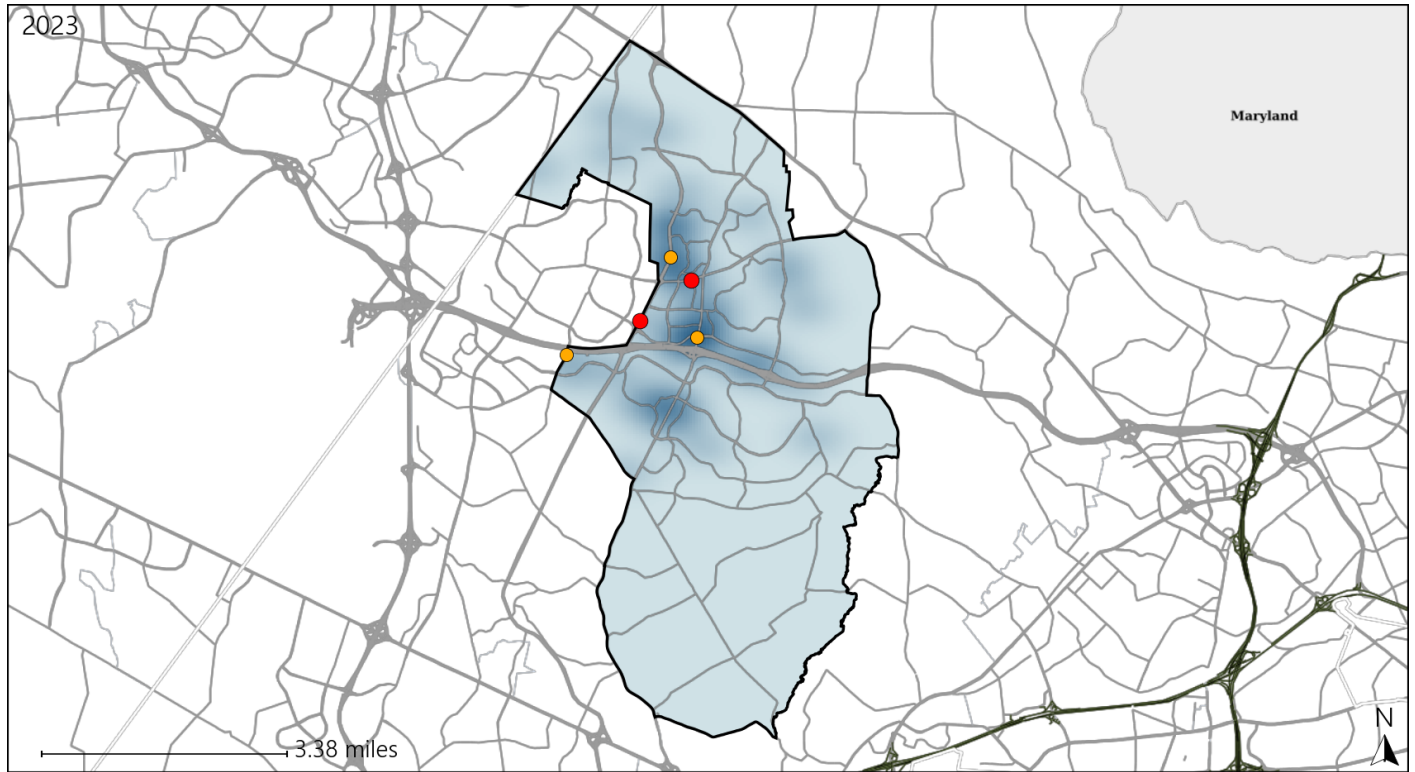


Available Crash Data - Calendar Year (CY)	CY 2020	CY 2021	CY 2022	CY 2023
Total Crashes	362	372	478	546
Fatal Crashes	1	2	5	5
Injury Crashes	111	105	153	173

Virginia House District 7 Alcohol Crash Statistics

Report Generated May, 2024

	Count	Highest Time Period(s)	Highest Day(s)	Highest Month(s)
Fatal Crashes	2	6:00pm - 8:59pm	Friday • Monday	June • October
Resulting Fatalities	2	(100%)	(100%)	(100%)
Serious Injury Crashes	3	6:00pm - 8:59pm	Monday • Sunday	March
		(67%)	(66%)	(67%)



House District 7 Alcohol-Related Crashes

Interstate Crashes Non-interstate Crashes
 ● Fatal ● Fatal
 ● Serious Injury ● Serious Injury

The blue gradient represents the density of all alcohol-related crashes.

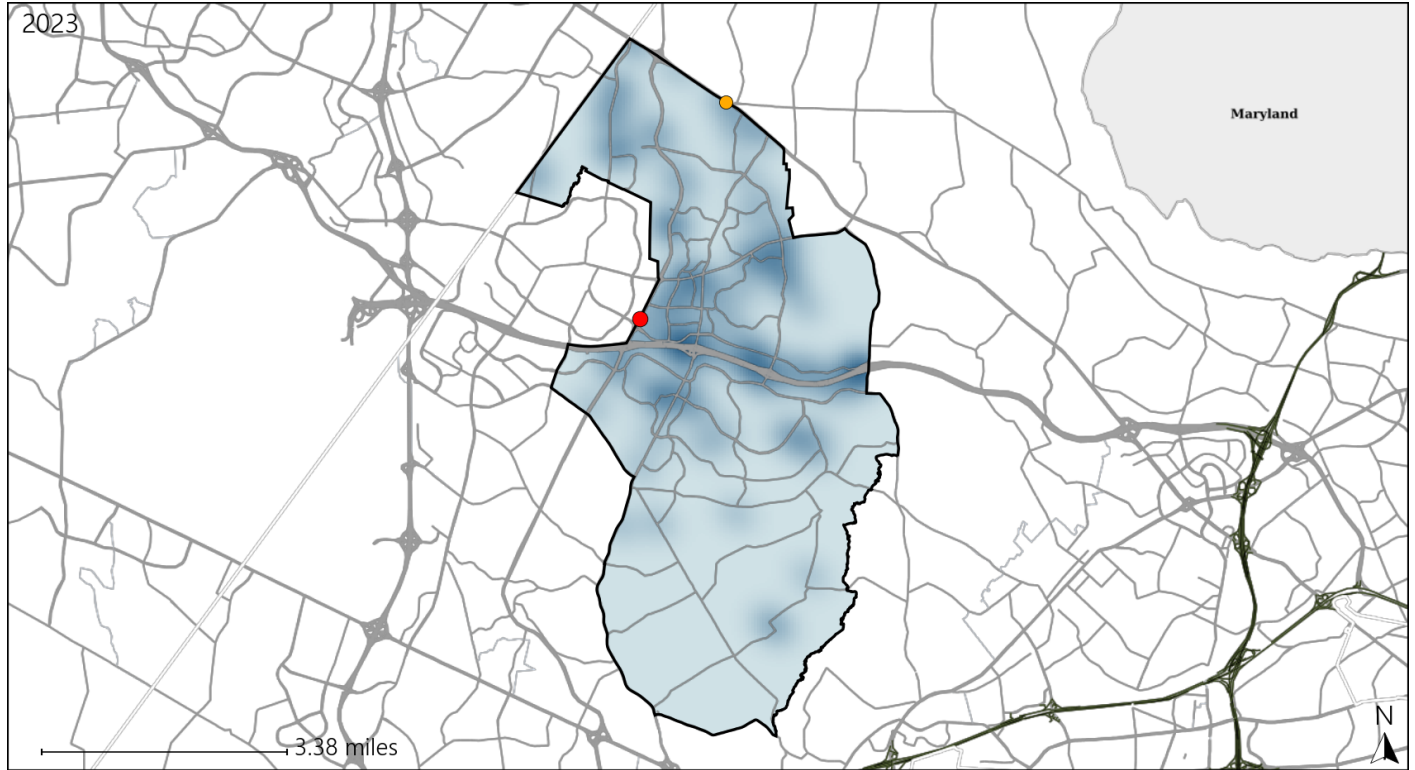


Available Crash Data - Calendar Year (CY)	CY 2020	CY 2021	CY 2022	CY 2023
Total Crashes	362	372	478	546
Fatal Crashes	1	2	5	5
Injury Crashes	111	105	153	173
Alcohol-Related Fatal Crashes	1	1	2	2
Percent of Alcohol-Related Fatal Crashes to Total Fatal Crashes	100%	50%	40%	40%
Alcohol-Related Injury Crashes	9	8	14	14
Percent of Alcohol-Related Injury Crashes to Total Injury Crashes	8%	8%	9%	8%

Virginia House District 7 Speed Crash Statistics

Report Generated May, 2024

	Count	Highest Time Period(s)	Highest Day(s)	Highest Month(s)
Fatal Crashes	1	6:00pm - 8:59pm	Friday	June
Resulting Fatalities	1	(100%)	(100%)	(100%)
Serious Injury Crashes	1	9:00am - 11:59am	Monday	April
		(100%)	(100%)	(100%)



House District 7 Speed-Related Crashes

Interstate Crashes Non-interstate Crashes
 ● Fatal ● Fatal
 ● Serious Injury ● Serious Injury

The blue gradient represents the density of all speed-related crashes.

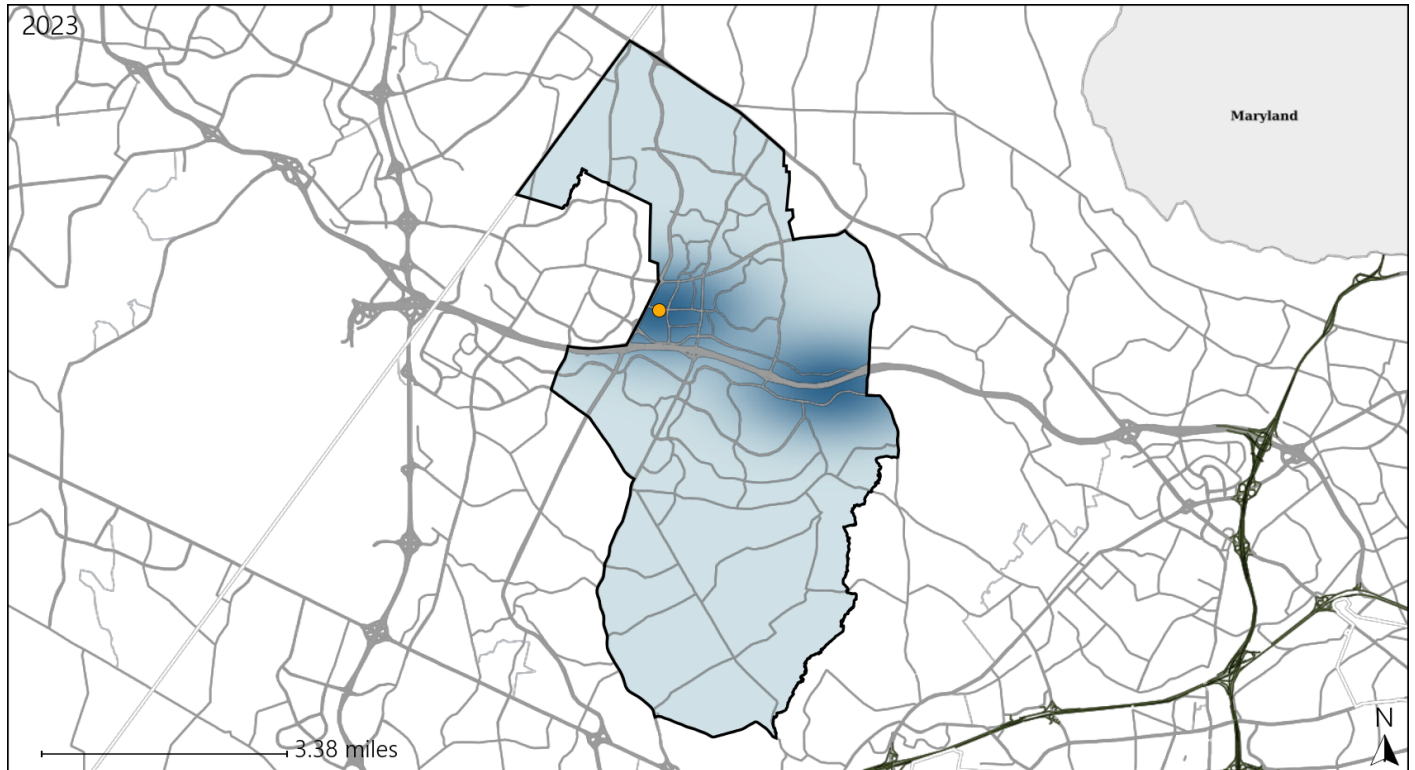


Available Crash Data - Calendar Year (CY)	CY 2020	CY 2021	CY 2022	CY 2023
Total Crashes	362	372	478	546
Fatal Crashes	1	2	5	5
Injury Crashes	111	105	153	173
Speed-Related Fatal Crashes	0	1	4	1
Percent of Speed-Related Fatal Crashes to Total Fatal Crashes	0%	50%	80%	20%
Speed-Related Injury Crashes	13	16	22	25
Percent of Speed-Related Injury Crashes to Total Injury Crashes	12%	15%	14%	14%

Virginia House District 7 Unrestrained Crash Statistics

Report Generated May, 2024

	Count	Highest Time Period(s)	Highest Day(s)	Highest Month(s)
Fatal Crashes	0	-	-	-
Unrestrained Fatalities	0	-	-	-
Serious Injury Crashes	1	6:00pm - 8:59pm (100%)	Sunday (100%)	June (100%)



House District 7 Unrestrained-Related Crashes

- | | |
|--------------------|------------------------|
| Interstate Crashes | Non-interstate Crashes |
| ● Fatal | ● Fatal |
| ● Serious Injury | ● Serious Injury |

The blue gradient represents the density of all unrestrained-related crashes.

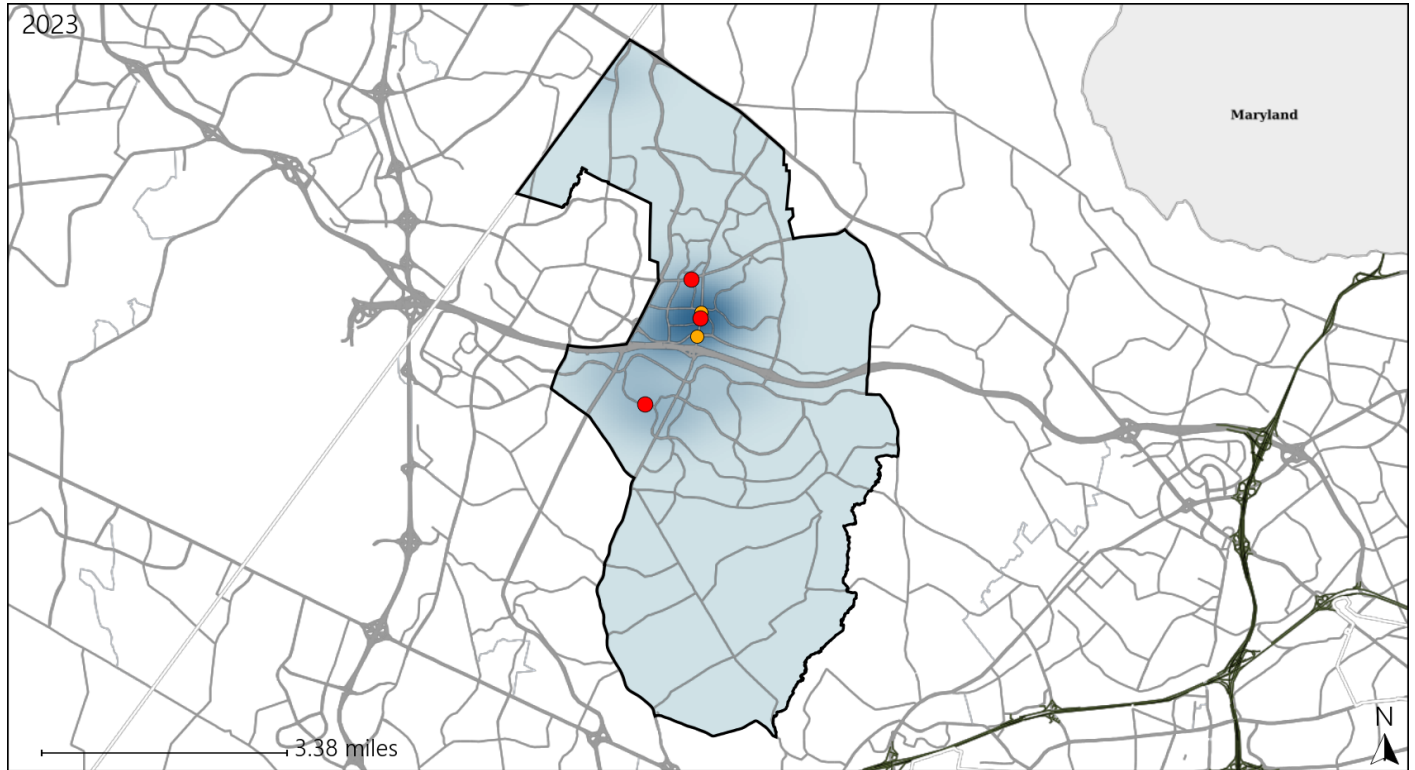


Available Crash Data - Calendar Year (CY)	CY 2020	CY 2021	CY 2022	CY 2023
Total Crashes	362	372	478	546
Fatalities	1	2	5	5
Injuries	179	156	250	279
Unrestrained Fatalities	1	0	1	0
Percent of Unrestrained Fatalities to Total Fatalities	100%	0%	20%	0%
Unrestrained Injuries	11	3	11	2
Percent of Unrestrained Injuries to Total Injuries	6%	2%	4%	1%

Virginia House District 7 Pedestrian Crash Statistics

Report Generated May, 2024

	Count	Highest Time Period(s)	Highest Day(s)	Highest Month(s)
Fatal Crashes	3	6:00am - 8:59am	Monday	December • May
Pedestrian Fatalities	3	6:00pm - 8:59pm (66%)	(67%)	(66%)
Serious Injury Crashes	2	9:00pm - 11:59pm (100%)	Saturday • Wednesday (100%)	March • November (100%)



House District 7 Pedestrian-Related Crashes

- | | |
|--|--|
| Interstate Crashes | Non-interstate Crashes |
| ● Fatal | ● Fatal |
| ● Serious Injury | ● Serious Injury |

The blue gradient represents the density of all pedestrian-related crashes.

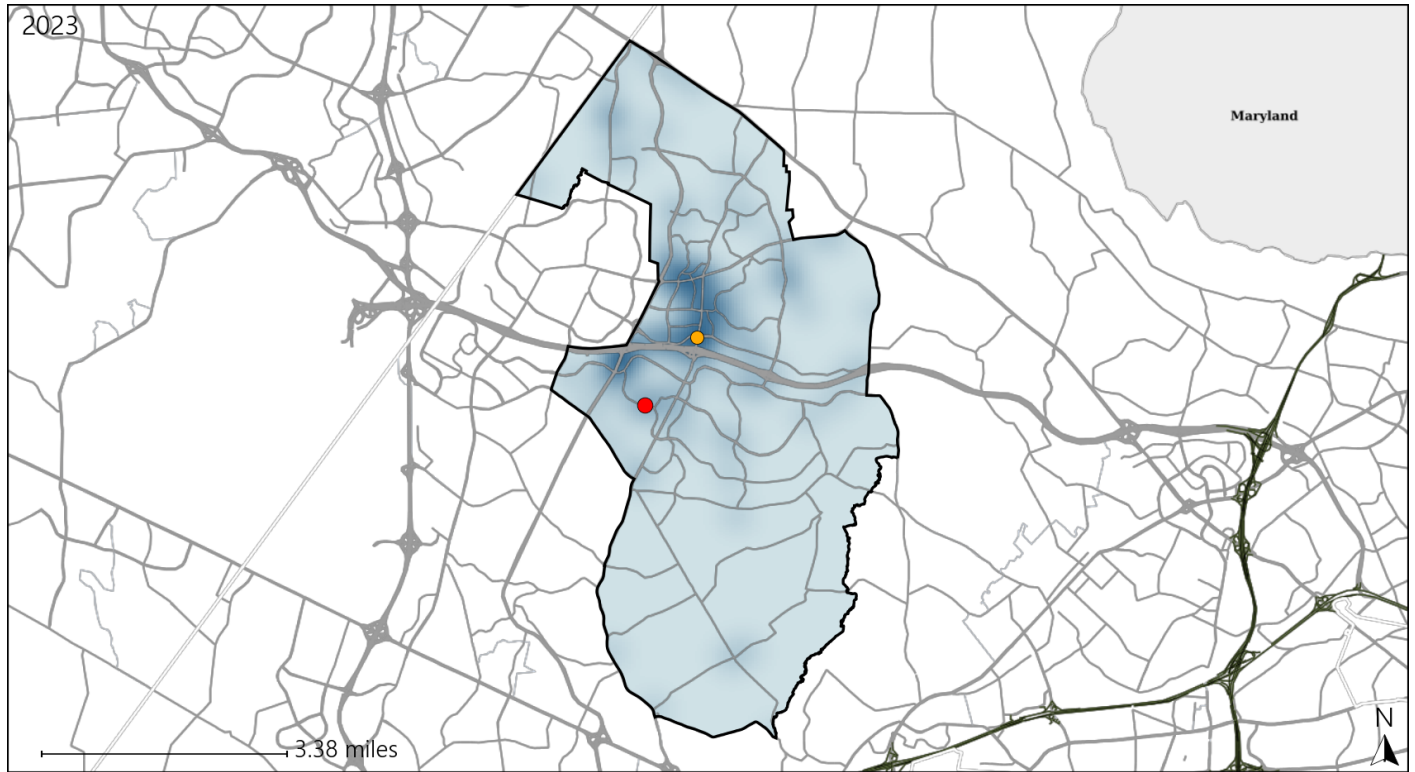


Available Crash Data - Calendar Year (CY)	CY 2020	CY 2021	CY 2022	CY 2023
Total Crashes	362	372	478	546
Fatal Crashes	1	2	5	5
Injury Crashes	111	105	153	173
Pedestrian-Related Fatal Crashes	0	1	3	3
Percent of Pedestrian-Related Fatal Crashes to Total Fatal Crashes	0%	50%	60%	60%
Pedestrian-Related Injury Crashes	7	11	11	10
Percent of Pedestrian-Related Injury Crashes to Total Injury Crashes	6%	10%	7%	6%

Virginia House District 7 Distracted Driving Crash Statistics

Report Generated May, 2024

	Count	Highest Time Period(s)	Highest Day(s)	Highest Month(s)
Fatal Crashes	1	Midnight - 2:59am	Monday	May
Resulting Fatalities	1	(100%)	(100%)	(100%)
Serious Injury Crashes	1	9:00pm - 11:59pm	Wednesday	March
		(100%)	(100%)	(100%)



House District 7 Distracted Driving-Related Crashes

- | | |
|--------------------|------------------------|
| Interstate Crashes | Non-interstate Crashes |
| Fatal | Fatal |
| Serious Injury | Serious Injury |

The blue gradient represents the density of all distracted driving-related crashes.



Available Crash Data - Calendar Year (CY)	CY 2020	CY 2021	CY 2022	CY 2023
Total Crashes	362	372	478	546
Fatal Crashes	1	2	5	5
Injury Crashes	111	105	153	173
Distracted Driving-Related Fatal Crashes	0	0	0	1
Percent of Distracted Driving-Related Fatal Crashes to Total Fatal Crashes	0%	0%	0%	20%
Distracted Driving-Related Injury Crashes	25	25	33	29
Percent of Distracted Driving-Related Injury Crashes to Total Injury Crashes	23%	24%	22%	17%