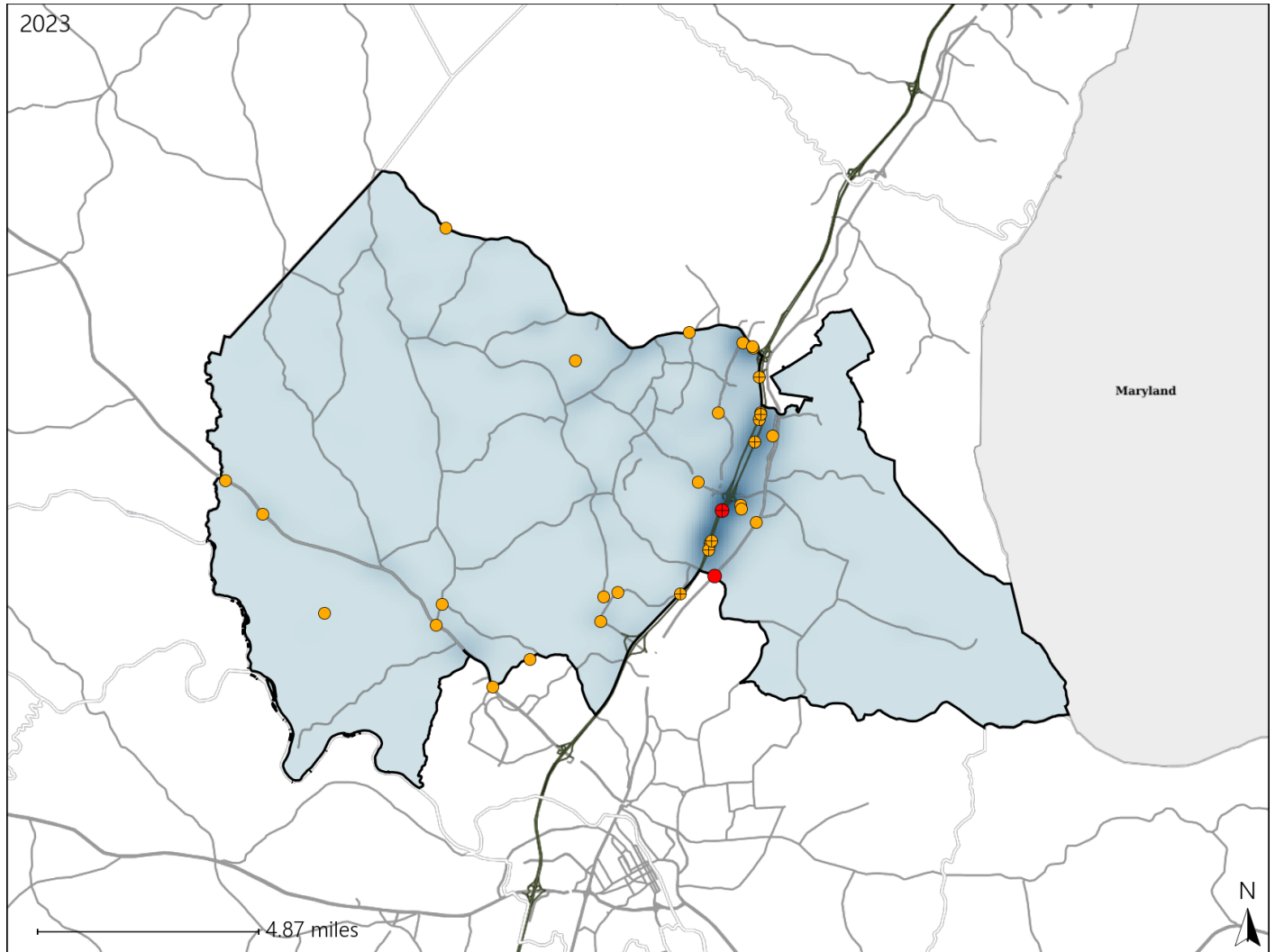


# Virginia House District 64 Crash Statistics

Report Generated May, 2024

	Count	Highest Time Period(s)	Highest Day(s)	Highest Month(s)
<b>Fatal Crashes</b>	<b>2</b>	<b>3:00pm - 5:59pm</b>	<b>Saturday • Tuesday</b>	<b>August • November</b>
<b>Resulting Fatalities</b>	<b>2</b>	<b>Noon - 2:59pm</b> (100%)	<b>(100%)</b>	<b>(100%)</b>
<b>Serious Injury Crashes</b>	<b>31</b>	<b>3:00pm - 5:59pm</b> <b>6:00pm - 8:59pm</b> (38%)	<b>Friday</b> (23%)	<b>October</b> (19%)



### House District 64 Crashes

Interstate Crashes

- Fatal
- Serious Injury

Non-interstate Crashes

- Fatal
- Serious Injury

The blue gradient represents the density of all crashes.

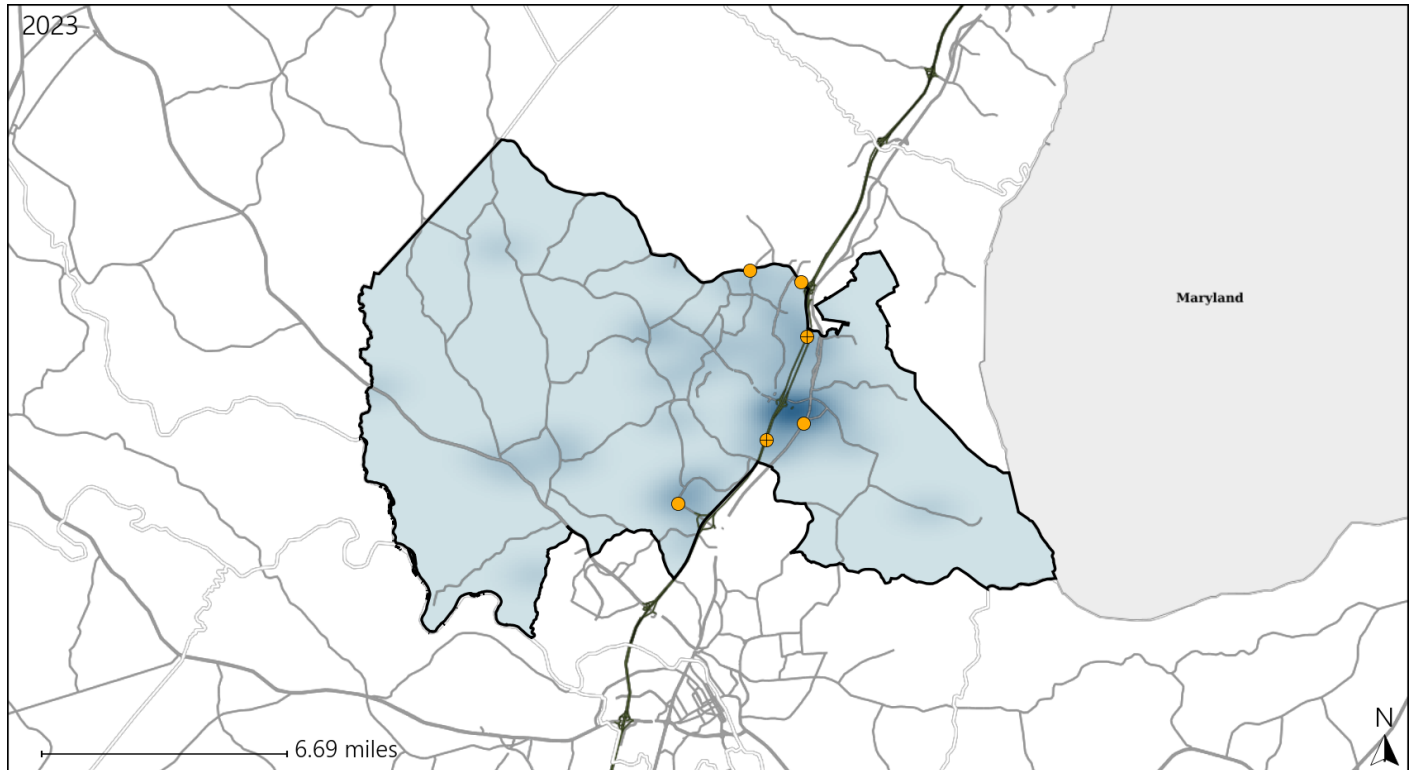


Available Crash Data - Calendar Year (CY)	CY 2020	CY 2021	CY 2022	CY 2023
Total Crashes	579	713	812	834
Fatal Crashes	1	8	9	2
Injury Crashes	138	169	202	227

# Virginia House District 64 Alcohol Crash Statistics

Report Generated May, 2024

	Count	Highest Time Period(s)	Highest Day(s)	Highest Month(s)
<b>Fatal Crashes</b>	<b>0</b>	-	-	-
<b>Resulting Fatalities</b>	<b>0</b>	-	-	-
<b>Serious Injury Crashes</b>	<b>6</b>	<b>9:00pm - 11:59pm</b> (50%)	<b>Saturday</b> (67%)	<b>November</b> (33%)



## House District 64 Alcohol-Related Crashes

Interstate Crashes

Non-interstate Crashes

- Fatal
- ⊕ Serious Injury

- Fatal
- Serious Injury

The blue gradient represents the density of all alcohol-related crashes.

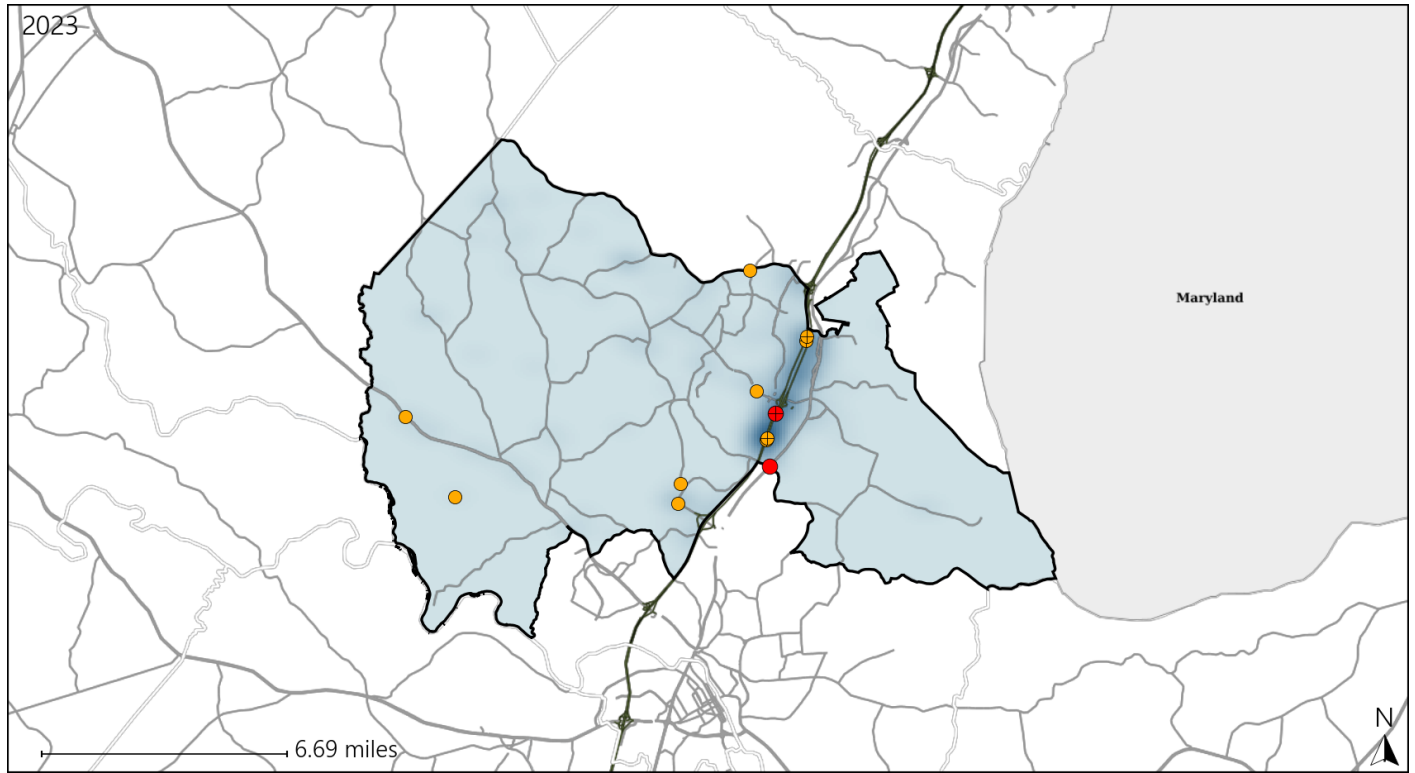


Available Crash Data - Calendar Year (CY)	CY 2020	CY 2021	CY 2022	CY 2023
<b>Total Crashes</b>	<b>579</b>	<b>713</b>	<b>812</b>	<b>834</b>
<b>Fatal Crashes</b>	<b>1</b>	<b>8</b>	<b>9</b>	<b>2</b>
<b>Injury Crashes</b>	<b>138</b>	<b>169</b>	<b>202</b>	<b>227</b>
<b>Alcohol-Related Fatal Crashes</b>	<b>0</b>	<b>1</b>	<b>3</b>	<b>0</b>
<b>Percent of Alcohol-Related Fatal Crashes to Total Fatal Crashes</b>	<b>0%</b>	<b>13%</b>	<b>33%</b>	<b>0%</b>
<b>Alcohol-Related Injury Crashes</b>	<b>10</b>	<b>7</b>	<b>14</b>	<b>20</b>
<b>Percent of Alcohol-Related Injury Crashes to Total Injury Crashes</b>	<b>7%</b>	<b>4%</b>	<b>7%</b>	<b>9%</b>

# Virginia House District 64 Speed Crash Statistics

Report Generated May, 2024

	Count	Highest Time Period(s)	Highest Day(s)	Highest Month(s)
<b>Fatal Crashes</b>	<b>2</b>	3:00pm - 5:59pm	Saturday • Tuesday	August • November
<b>Resulting Fatalities</b>	<b>2</b>	Noon - 2:59pm (100%)	(100%)	(100%)
<b>Serious Injury Crashes</b>	<b>10</b>	6:00am - 8:59am 9:00pm - 11:59pm (40%)	Saturday (50%)	April (30%)



### House District 64 Speed-Related Crashes

Interstate Crashes                      Non-interstate Crashes  
 ● Fatal                                      ● Fatal  
 ⊕ Serious Injury                          ⊕ Serious Injury

The blue gradient represents the density of all speed-related crashes.

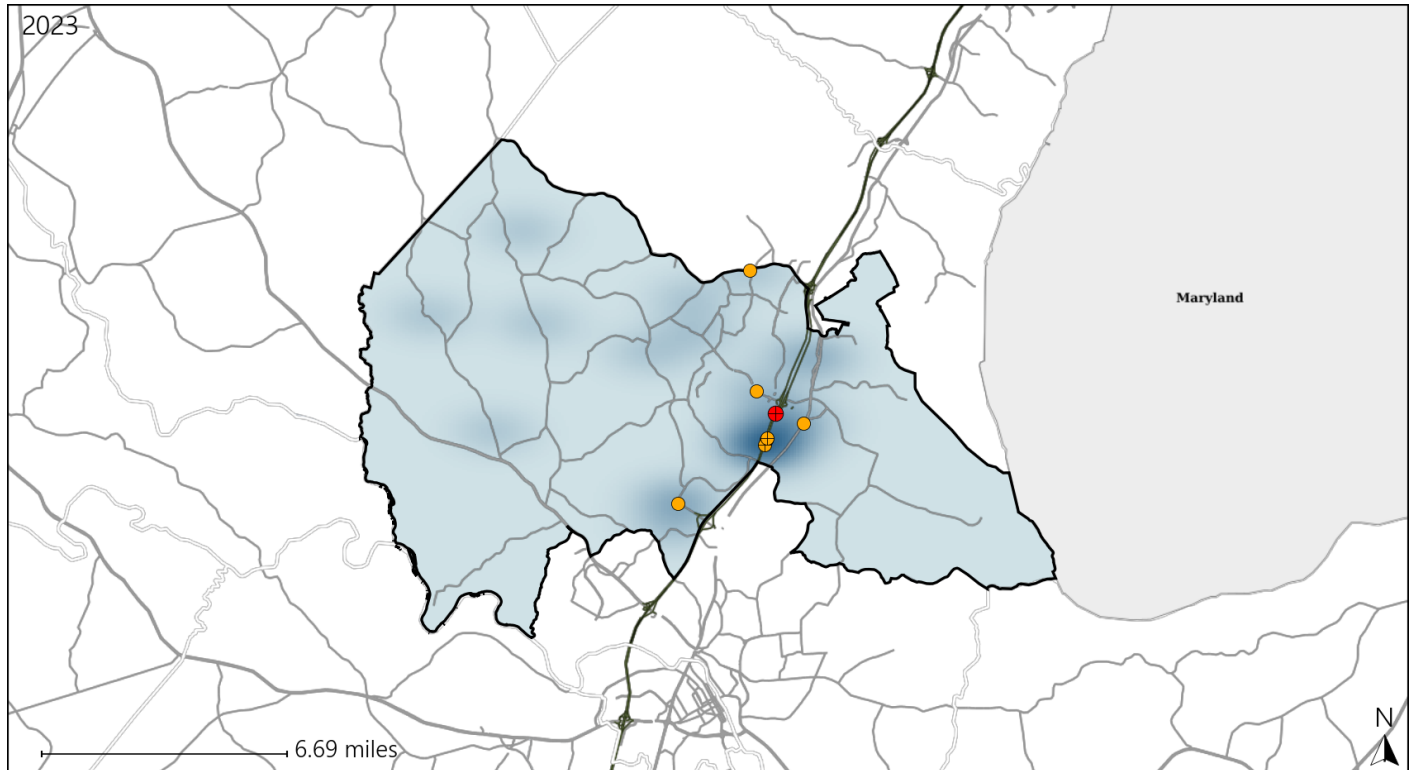


Available Crash Data - Calendar Year (CY)	CY 2020	CY 2021	CY 2022	CY 2023
Total Crashes	579	713	812	834
Fatal Crashes	1	8	9	2
Injury Crashes	138	169	202	227
Speed-Related Fatal Crashes	1	4	4	2
Percent of Speed-Related Fatal Crashes to Total Fatal Crashes	100%	50%	44%	100%
Speed-Related Injury Crashes	54	65	70	75
Percent of Speed-Related Injury Crashes to Total Injury Crashes	39%	38%	35%	33%

# Virginia House District 64 Unrestrained Crash Statistics

Report Generated May, 2024

	Count	Highest Time Period(s)	Highest Day(s)	Highest Month(s)
<b>Fatal Crashes</b>	<b>1</b>	<b>3:00pm - 5:59pm</b>	<b>Saturday</b>	<b>November</b>
<b>Unrestrained Fatalities</b>	<b>1</b>	<b>(100%)</b>	<b>(100%)</b>	<b>(100%)</b>
<b>Serious Injury Crashes</b>	<b>7</b>	<b>9:00pm - 11:59pm</b>	<b>Saturday</b>	<b>March</b>
		<b>(29%)</b>	<b>(57%)</b>	<b>(29%)</b>



## House District 64 Unrestrained-Related Crashes

Interstate Crashes

Non-interstate Crashes

- Fatal
- Serious Injury

- Fatal
- Serious Injury

The blue gradient represents the density of all unrestrained-related crashes.

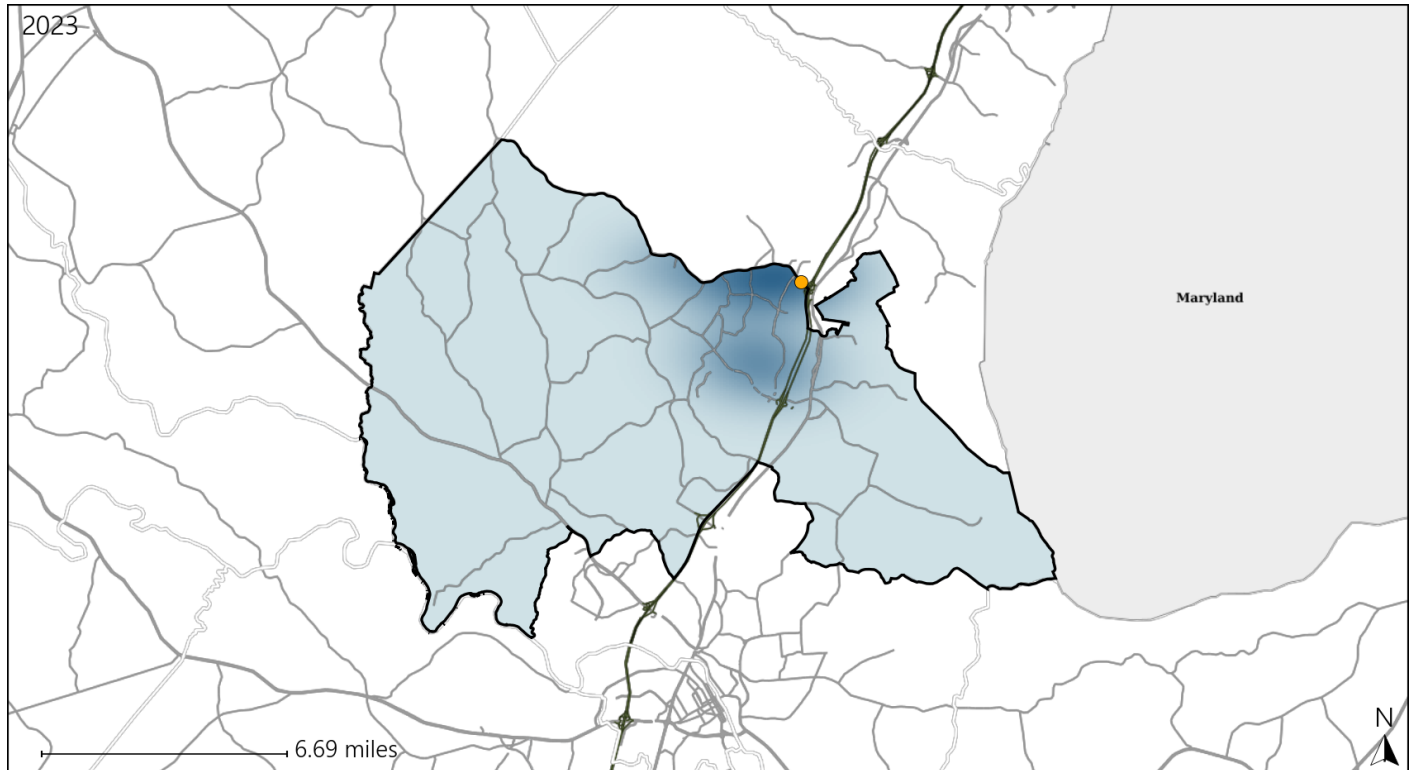


Available Crash Data - Calendar Year (CY)	CY 2020	CY 2021	CY 2022	CY 2023
<b>Total Crashes</b>	<b>579</b>	<b>713</b>	<b>812</b>	<b>834</b>
<b>Fatalities</b>	<b>1</b>	<b>8</b>	<b>11</b>	<b>2</b>
<b>Injuries</b>	<b>199</b>	<b>236</b>	<b>343</b>	<b>347</b>
<b>Unrestrained Fatalities</b>	<b>0</b>	<b>0</b>	<b>3</b>	<b>1</b>
<b>Percent of Unrestrained Fatalities to Total Fatalities</b>	<b>0%</b>	<b>0%</b>	<b>27%</b>	<b>50%</b>
<b>Unrestrained Injuries</b>	<b>18</b>	<b>12</b>	<b>19</b>	<b>25</b>
<b>Percent of Unrestrained Injuries to Total Injuries</b>	<b>9%</b>	<b>5%</b>	<b>6%</b>	<b>7%</b>

# Virginia House District 64 Pedestrian Crash Statistics

Report Generated May, 2024

	Count	Highest Time Period(s)	Highest Day(s)	Highest Month(s)
<b>Fatal Crashes</b>	<b>0</b>	-	-	-
<b>Pedestrian Fatalities</b>	<b>0</b>	-	-	-
<b>Serious Injury Crashes</b>	<b>1</b>	<b>6:00pm - 8:59pm</b> (100%)	<b>Sunday</b> (100%)	<b>November</b> (100%)



## House District 64 Pedestrian-Related Crashes

Interstate Crashes

Non-interstate Crashes

- Fatal
- Serious Injury

- Fatal
- Serious Injury

The blue gradient represents the density of all pedestrian-related crashes.

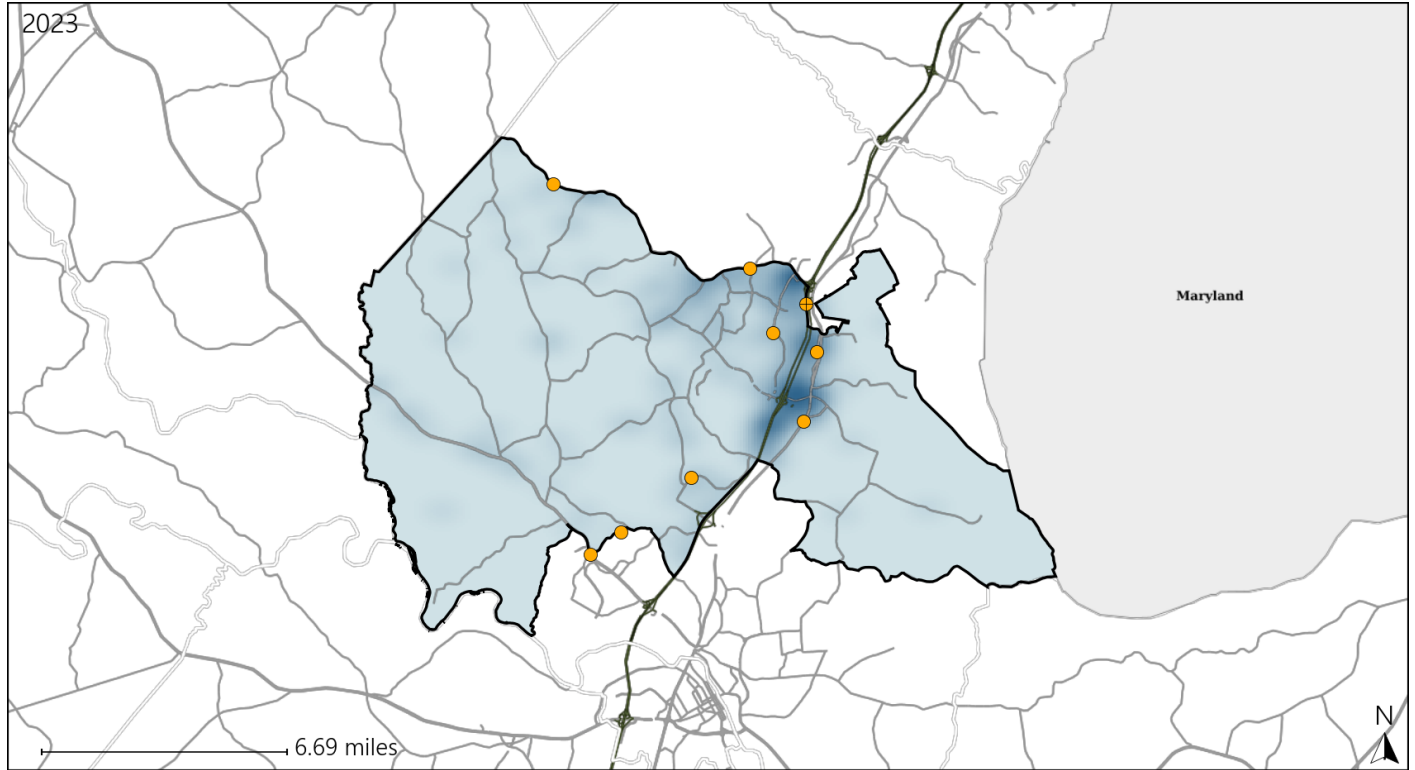


Available Crash Data - Calendar Year (CY)	CY 2020	CY 2021	CY 2022	CY 2023
<b>Total Crashes</b>	<b>579</b>	<b>713</b>	<b>812</b>	<b>834</b>
<b>Fatal Crashes</b>	<b>1</b>	<b>8</b>	<b>9</b>	<b>2</b>
<b>Injury Crashes</b>	<b>138</b>	<b>169</b>	<b>202</b>	<b>227</b>
<b>Pedestrian-Related Fatal Crashes</b>	<b>0</b>	<b>2</b>	<b>2</b>	<b>0</b>
<b>Percent of Pedestrian-Related Fatal Crashes to Total Fatal Crashes</b>	<b>0%</b>	<b>25%</b>	<b>22%</b>	<b>0%</b>
<b>Pedestrian-Related Injury Crashes</b>	<b>5</b>	<b>1</b>	<b>9</b>	<b>6</b>
<b>Percent of Pedestrian-Related Injury Crashes to Total Injury Crashes</b>	<b>4%</b>	<b>1%</b>	<b>4%</b>	<b>3%</b>

# Virginia House District 64 Distracted Driving Crash Statistics

Report Generated May, 2024

	Count	Highest Time Period(s)	Highest Day(s)	Highest Month(s)
<b>Fatal Crashes</b>	0	-	-	-
<b>Resulting Fatalities</b>	0	-	-	-
<b>Serious Injury Crashes</b>	9	6:00pm - 8:59pm (33%)	Monday • Sunday (44%)	November • October (44%)



## House District 64 Distracted Driving-Related Crashes

Interstate Crashes

- Fatal
- Serious Injury

Non-interstate Crashes

- Fatal
- Serious Injury

The blue gradient represents the density of all distracted driving-related crashes.



Available Crash Data - Calendar Year (CY)	CY 2020	CY 2021	CY 2022	CY 2023
Total Crashes	579	713	812	834
Fatal Crashes	1	8	9	2
Injury Crashes	138	169	202	227
Distracted Driving-Related Fatal Crashes	1	2	0	0
Percent of Distracted Driving-Related Fatal Crashes to Total Fatal Crashes	100%	25%	0%	0%
Distracted Driving-Related Injury Crashes	29	44	51	67
Percent of Distracted Driving-Related Injury Crashes to Total Injury Crashes	21%	26%	25%	30%