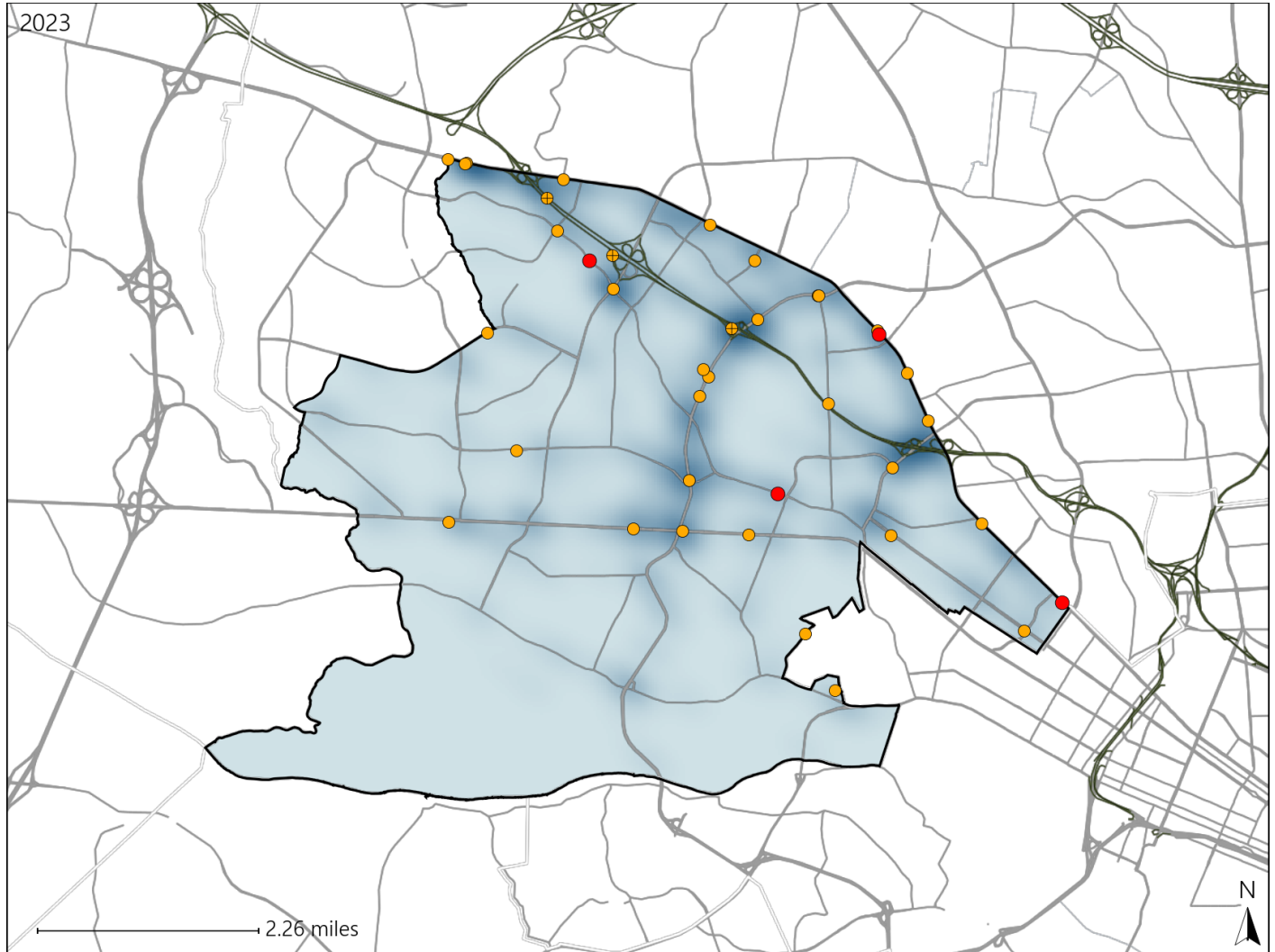


# Virginia House District 58 Crash Statistics

Report Generated May, 2024

	Count	Highest Time Period(s)	Highest Day(s)	Highest Month(s)
<b>Fatal Crashes</b>	<b>4</b>	6:00pm - 8:59pm	Saturday	December - January
<b>Resulting Fatalities</b>	<b>4</b>	9:00pm - 11:59pm (100%)	(50%)	(50%)
<b>Serious Injury Crashes</b>	<b>34</b>	9:00pm - 11:59pm (24%)	Friday (35%)	September (21%)



### House District 58 Crashes

Interstate Crashes

- Fatal
- Serious Injury

Non-interstate Crashes

- Fatal
- Serious Injury

The blue gradient represents the density of all crashes.

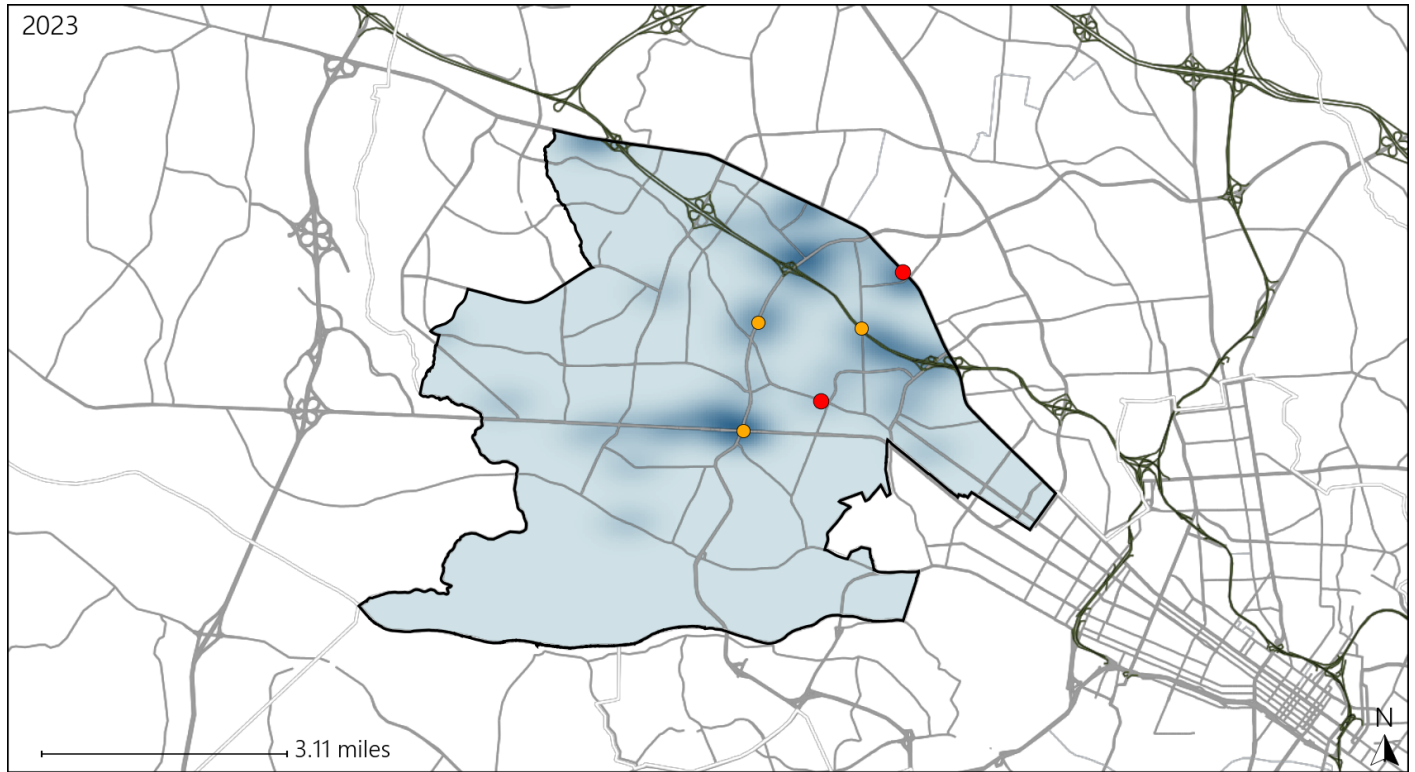


Available Crash Data - Calendar Year (CY)	CY 2020	CY 2021	CY 2022	CY 2023
Total Crashes	1148	1313	1403	1377
Fatal Crashes	5	4	3	4
Injury Crashes	302	336	364	329

# Virginia House District 58 Alcohol Crash Statistics

Report Generated May, 2024

	Count	Highest Time Period(s)	Highest Day(s)	Highest Month(s)
<b>Fatal Crashes</b>	<b>2</b>	<b>6:00pm - 8:59pm</b>	<b>Saturday • Tuesday</b>	<b>January • May</b>
<b>Resulting Fatalities</b>	<b>2</b>	(100%)	(100%)	(100%)
<b>Serious Injury Crashes</b>	<b>3</b>	<b>6:00pm - 8:59pm</b>	<b>Friday</b>	<b>December • November</b>
		(67%)	(67%)	(66%)



### House District 58 Alcohol-Related Crashes

Interstate Crashes

Non-interstate Crashes

- Fatal
- Serious Injury

- Fatal
- Serious Injury

The blue gradient represents the density of all alcohol-related crashes.

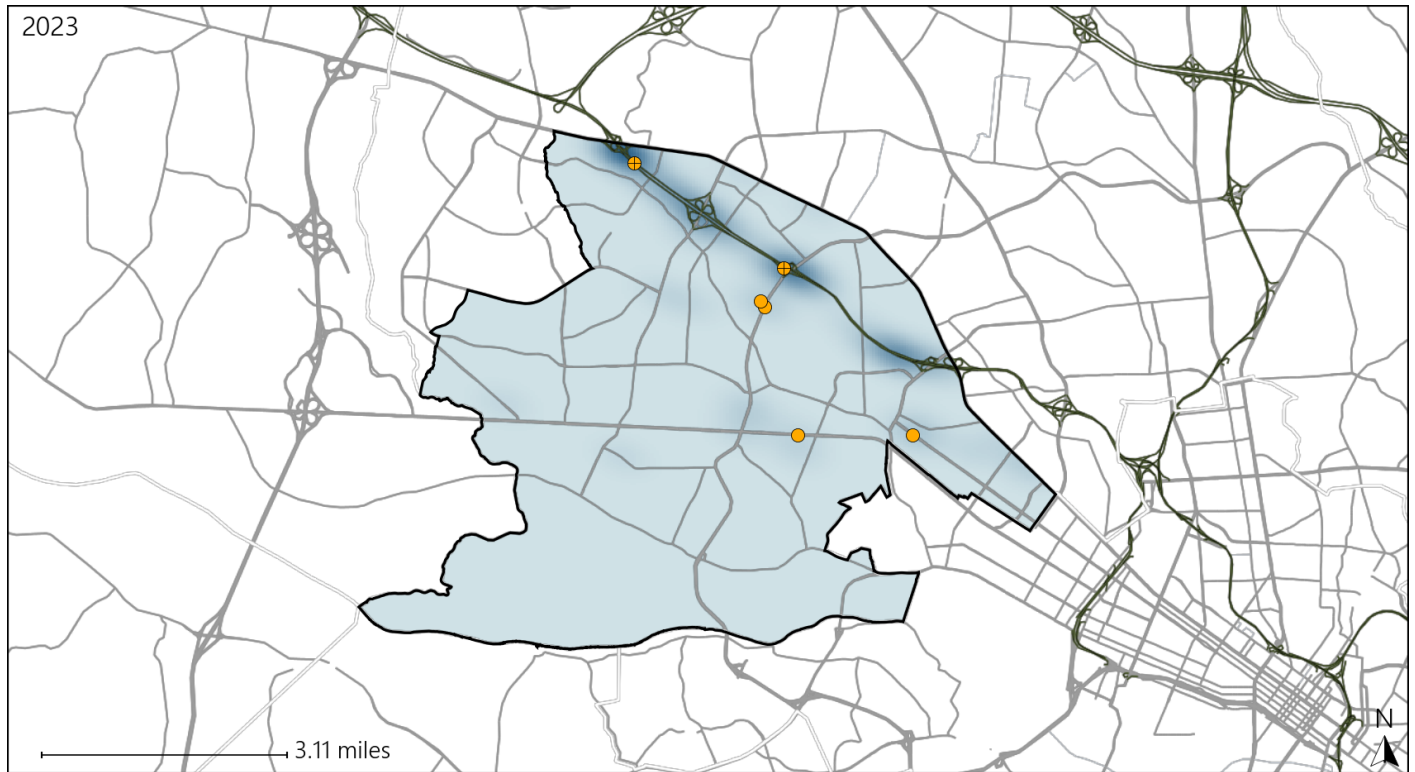


Available Crash Data - Calendar Year (CY)	CY 2020	CY 2021	CY 2022	CY 2023
<b>Total Crashes</b>	<b>1148</b>	<b>1313</b>	<b>1403</b>	<b>1377</b>
<b>Fatal Crashes</b>	<b>5</b>	<b>4</b>	<b>3</b>	<b>4</b>
<b>Injury Crashes</b>	<b>302</b>	<b>336</b>	<b>364</b>	<b>329</b>
<b>Alcohol-Related Fatal Crashes</b>	<b>0</b>	<b>0</b>	<b>1</b>	<b>2</b>
<b>Percent of Alcohol-Related Fatal Crashes to Total Fatal Crashes</b>	<b>0%</b>	<b>0%</b>	<b>33%</b>	<b>50%</b>
<b>Alcohol-Related Injury Crashes</b>	<b>21</b>	<b>22</b>	<b>21</b>	<b>20</b>
<b>Percent of Alcohol-Related Injury Crashes to Total Injury Crashes</b>	<b>7%</b>	<b>7%</b>	<b>6%</b>	<b>6%</b>

# Virginia House District 58 Speed Crash Statistics

Report Generated May, 2024

	Count	Highest Time Period(s)	Highest Day(s)	Highest Month(s)
<b>Fatal Crashes</b>	<b>0</b>	-	-	-
<b>Resulting Fatalities</b>	<b>0</b>	-	-	-
<b>Serious Injury Crashes</b>	<b>6</b>	6:00pm - 8:59pm 9:00am - 11:59am (66%)	Friday • Thursday (66%)	April • December (34%)



## House District 58 Speed-Related Crashes

Interstate Crashes                      Non-interstate Crashes  
 ● Fatal                                      ● Fatal  
 ⊕ Serious Injury                          ⊕ Serious Injury

The blue gradient represents the density of all speed-related crashes.

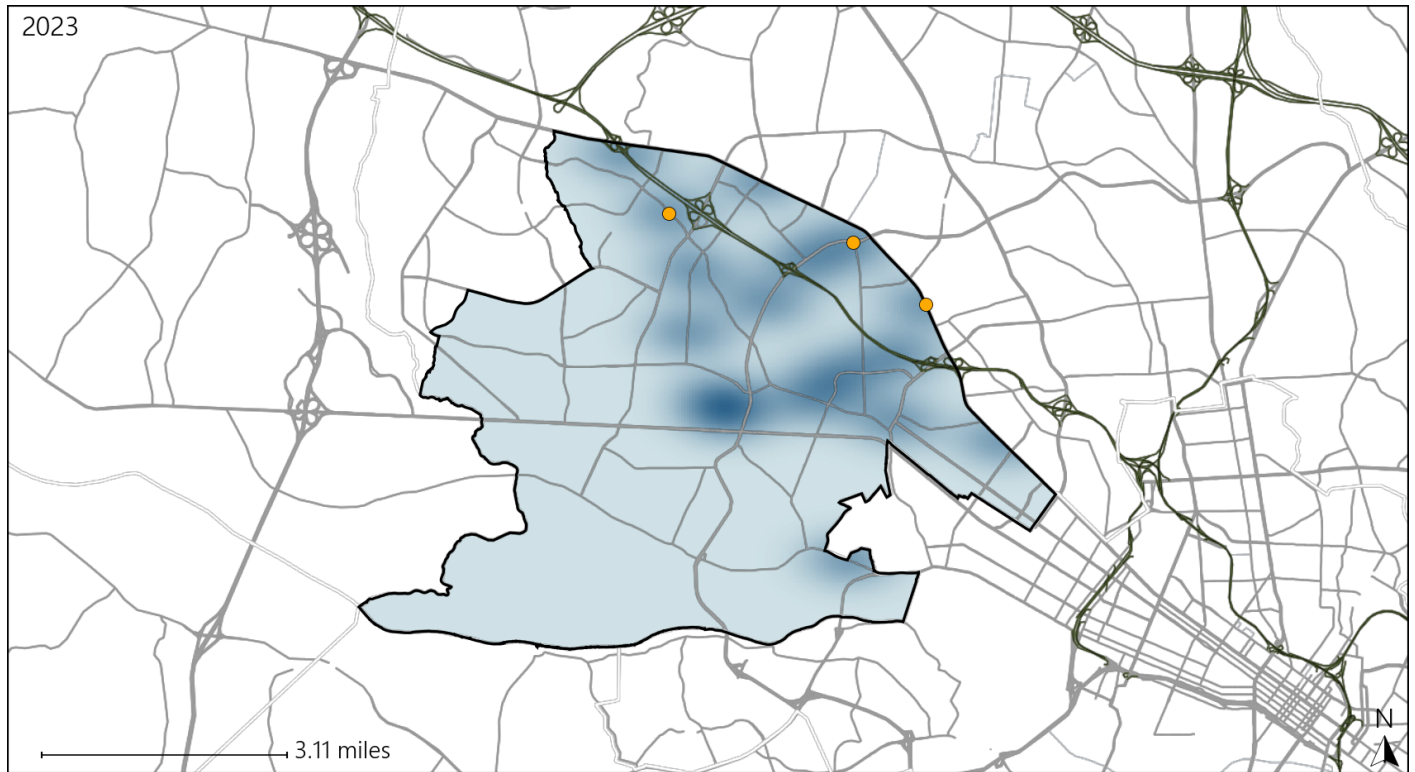


Available Crash Data - Calendar Year (CY)	CY 2020	CY 2021	CY 2022	CY 2023
Total Crashes	1148	1313	1403	1377
Fatal Crashes	5	4	3	4
Injury Crashes	302	336	364	329
Speed-Related Fatal Crashes	1	1	1	0
Percent of Speed-Related Fatal Crashes to Total Fatal Crashes	20%	25%	33%	0%
Speed-Related Injury Crashes	15	13	21	18
Percent of Speed-Related Injury Crashes to Total Injury Crashes	5%	4%	6%	5%

# Virginia House District 58 Unrestrained Crash Statistics

Report Generated May, 2024

	Count	Highest Time Period(s)	Highest Day(s)	Highest Month(s)
<b>Fatal Crashes</b>	0	-	-	-
<b>Unrestrained Fatalities</b>	0	-	-	-
<b>Serious Injury Crashes</b>	3	6:00pm - 8:59pm 9:00am - 11:59am (66%)	Friday (67%)	December • June (66%)



### House District 58 Unrestrained-Related Crashes

- |                    |                        |
|--------------------|------------------------|
| Interstate Crashes | Non-interstate Crashes |
| ● Fatal            | ● Fatal                |
| ⊕ Serious Injury   | ● Serious Injury       |

The blue gradient represents the density of all unrestrained-related crashes.

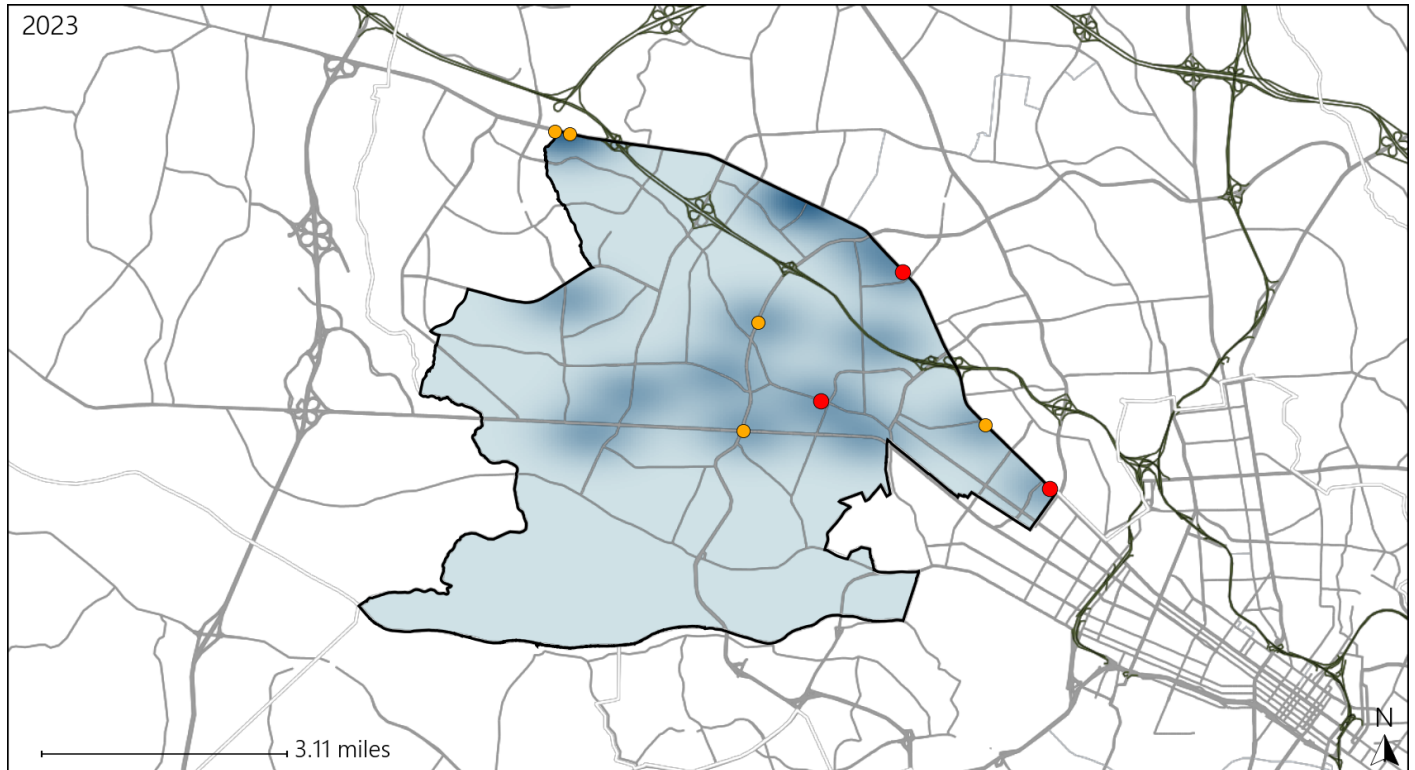


Available Crash Data - Calendar Year (CY)	CY 2020	CY 2021	CY 2022	CY 2023
<b>Total Crashes</b>	1148	1313	1403	1377
<b>Fatalities</b>	5	4	3	4
<b>Injuries</b>	537	572	619	585
<b>Unrestrained Fatalities</b>	0	0	1	0
<b>Percent of Unrestrained Fatalities to Total Fatalities</b>	0%	0%	33%	0%
<b>Unrestrained Injuries</b>	20	25	15	17
<b>Percent of Unrestrained Injuries to Total Injuries</b>	4%	4%	2%	3%

# Virginia House District 58 Pedestrian Crash Statistics

Report Generated May, 2024

	Count	Highest Time Period(s)	Highest Day(s)	Highest Month(s)
<b>Fatal Crashes</b>	<b>3</b>	<b>6:00pm - 8:59pm</b>	<b>Saturday</b>	<b>January • July</b>
<b>Pedestrian Fatalities</b>	<b>3</b>	<b>(67%)</b>	<b>(67%)</b>	<b>(66%)</b>
<b>Serious Injury Crashes</b>	<b>5</b>	<b>9:00pm - 11:59pm</b>	<b>Friday • Tuesday</b>	<b>December</b>
		<b>(60%)</b>	<b>(80%)</b>	<b>(40%)</b>



### House District 58 Pedestrian-Related Crashes

Interstate Crashes

- Fatal
- Serious Injury

Non-interstate Crashes

- Fatal
- Serious Injury

The blue gradient represents the density of all pedestrian-related crashes.

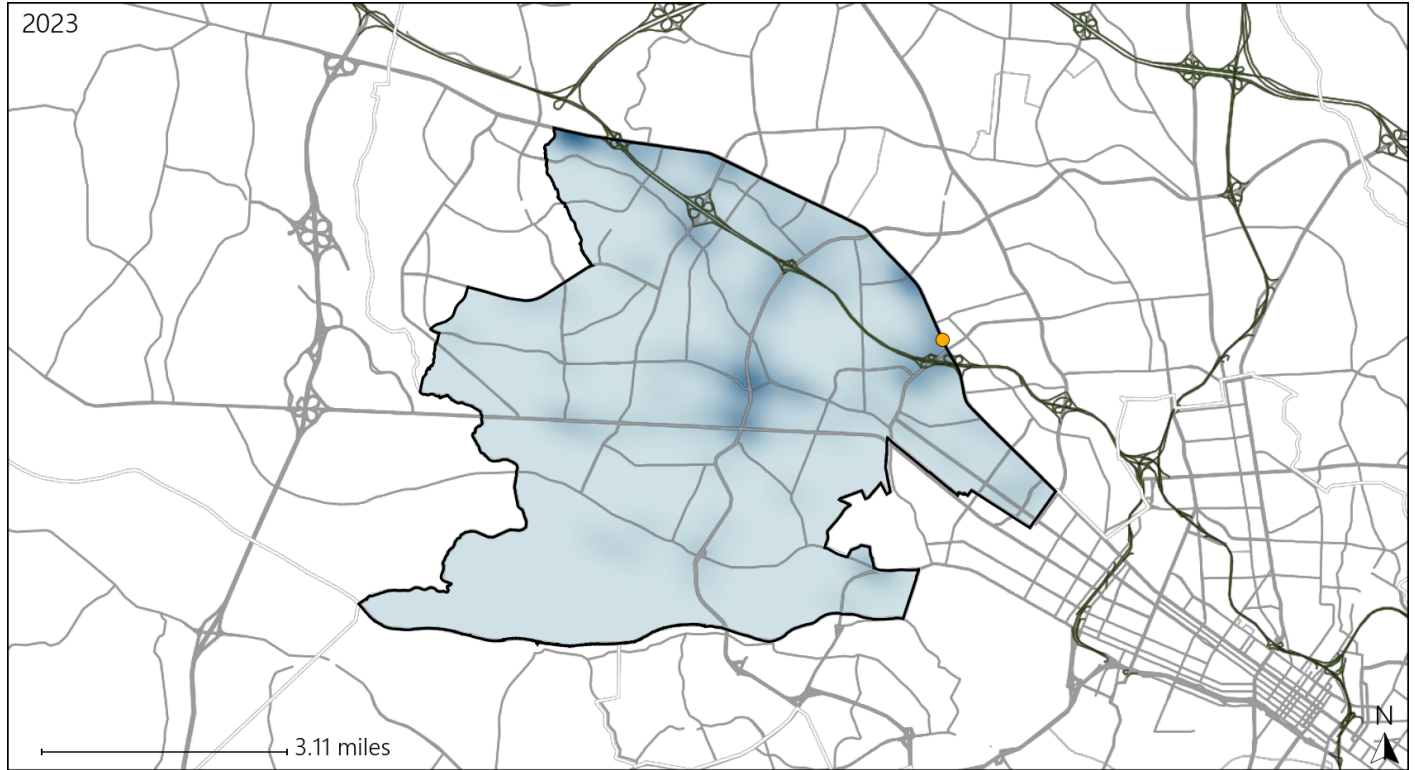


Available Crash Data - Calendar Year (CY)	CY 2020	CY 2021	CY 2022	CY 2023
<b>Total Crashes</b>	<b>1148</b>	<b>1313</b>	<b>1403</b>	<b>1377</b>
<b>Fatal Crashes</b>	<b>5</b>	<b>4</b>	<b>3</b>	<b>4</b>
<b>Injury Crashes</b>	<b>302</b>	<b>336</b>	<b>364</b>	<b>329</b>
<b>Pedestrian-Related Fatal Crashes</b>	<b>4</b>	<b>1</b>	<b>2</b>	<b>3</b>
<b>Percent of Pedestrian-Related Fatal Crashes to Total Fatal Crashes</b>	<b>80%</b>	<b>25%</b>	<b>67%</b>	<b>75%</b>
<b>Pedestrian-Related Injury Crashes</b>	<b>18</b>	<b>16</b>	<b>18</b>	<b>14</b>
<b>Percent of Pedestrian-Related Injury Crashes to Total Injury Crashes</b>	<b>6%</b>	<b>5%</b>	<b>5%</b>	<b>4%</b>

# Virginia House District 58 Distracted Driving Crash Statistics

Report Generated May, 2024

	Count	Highest Time Period(s)	Highest Day(s)	Highest Month(s)
<b>Fatal Crashes</b>	0	-	-	-
<b>Resulting Fatalities</b>	0	-	-	-
<b>Serious Injury Crashes</b>	1	9:00pm - 11:59pm (100%)	Friday (100%)	October (100%)



## House District 58 Distracted Driving-Related Crashes

- |                    |                        |
|--------------------|------------------------|
| Interstate Crashes | Non-interstate Crashes |
| Fatal              | Fatal                  |
| Serious Injury     | Serious Injury         |

The blue gradient represents the density of all distracted driving-related crashes.



Available Crash Data - Calendar Year (CY)	CY 2020	CY 2021	CY 2022	CY 2023
<b>Total Crashes</b>	1148	1313	1403	1377
<b>Fatal Crashes</b>	5	4	3	4
<b>Injury Crashes</b>	302	336	364	329
<b>Distracted Driving-Related Fatal Crashes</b>	1	0	1	0
<b>Percent of Distracted Driving-Related Fatal Crashes to Total Fatal Crashes</b>	20%	0%	33%	0%
<b>Distracted Driving-Related Injury Crashes</b>	68	58	54	40
<b>Percent of Distracted Driving-Related Injury Crashes to Total Injury Crashes</b>	23%	17%	15%	12%