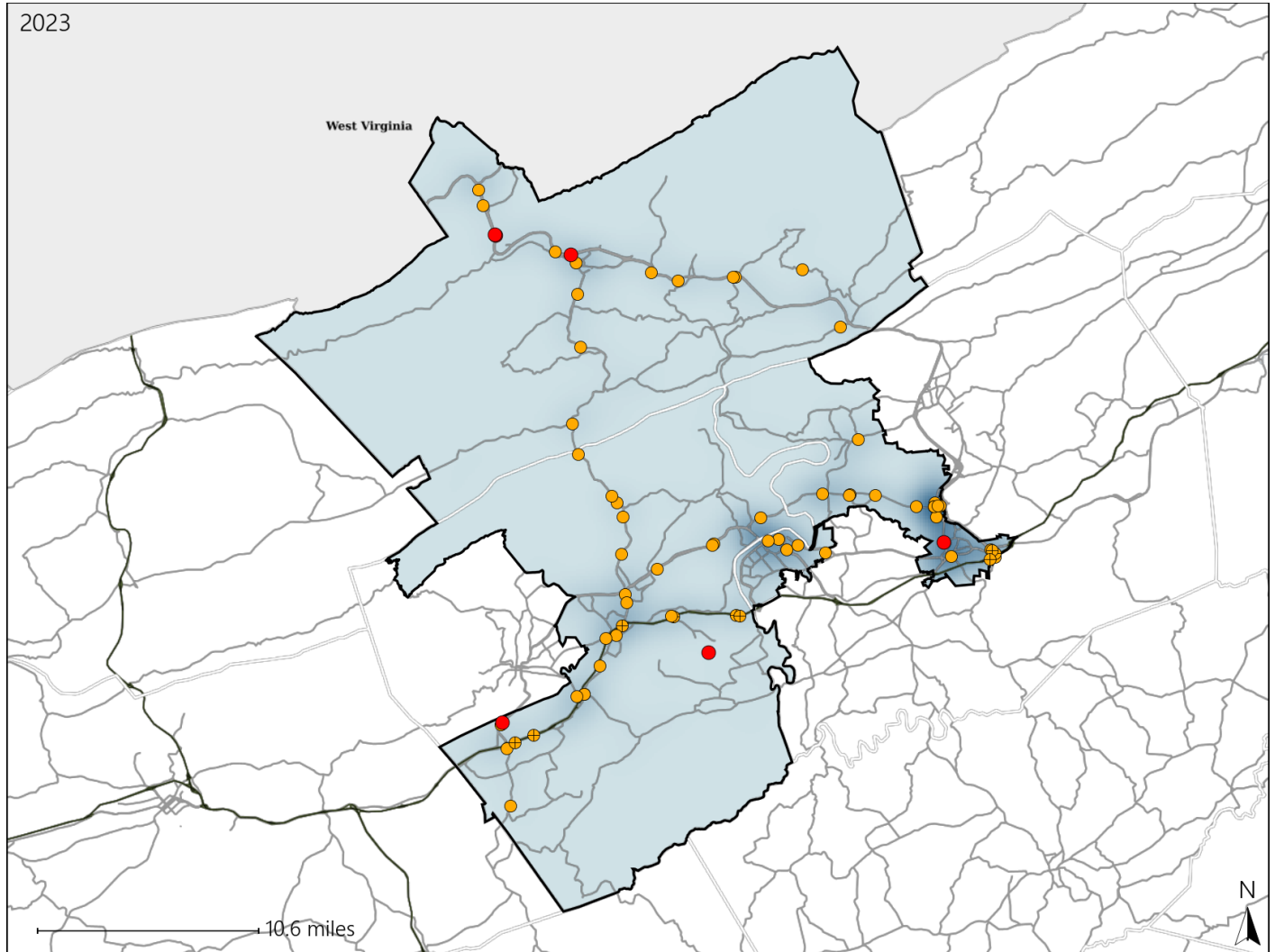


# Virginia House District 42 Crash Statistics

Report Generated May, 2024

	Count	Highest Time Period(s)	Highest Day(s)	Highest Month(s)
<b>Fatal Crashes</b>	<b>6</b>	3:00pm - 5:59pm	Friday • Monday	November
<b>Resulting Fatalities</b>	<b>6</b>	6:00pm - 8:59pm (66%)	(34%)	(33%)
<b>Serious Injury Crashes</b>	<b>64</b>	3:00pm - 5:59pm (19%)	Friday • Monday (34%)	July (14%)



### House District 42 Crashes

Interstate Crashes

- Fatal
- Serious Injury

Non-interstate Crashes

- Fatal
- Serious Injury

The blue gradient represents the density of all crashes.

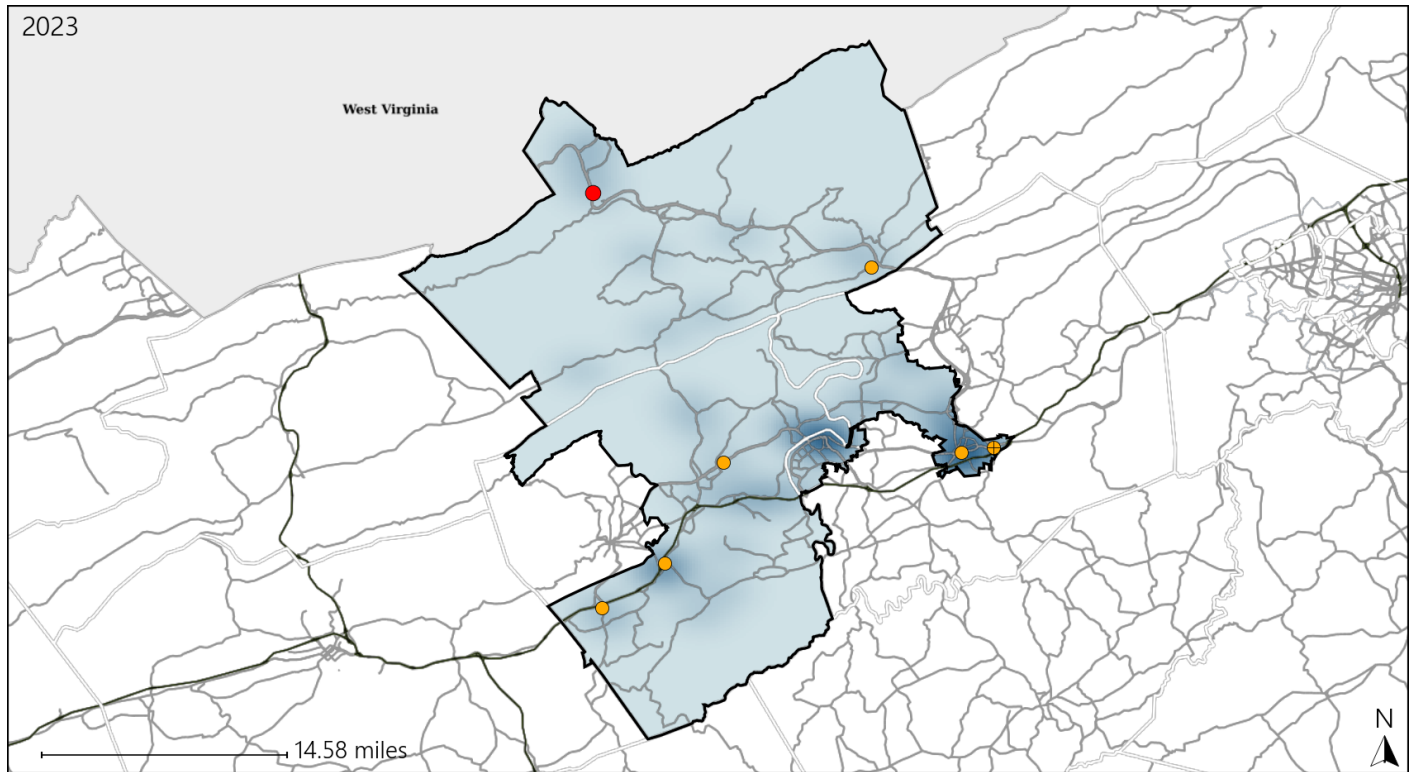


Available Crash Data - Calendar Year (CY)	CY 2020	CY 2021	CY 2022	CY 2023
Total Crashes	1067	1255	1354	1301
Fatal Crashes	11	9	14	6
Injury Crashes	350	393	439	407

# Virginia House District 42 Alcohol Crash Statistics

Report Generated May, 2024

	Count	Highest Time Period(s)	Highest Day(s)	Highest Month(s)
<b>Fatal Crashes</b>	<b>1</b>	<b>6:00pm - 8:59pm</b>	<b>Friday</b>	<b>May</b>
<b>Resulting Fatalities</b>	<b>1</b>	(100%)	(100%)	(100%)
<b>Serious Injury Crashes</b>	<b>6</b>	<b>6:00pm - 8:59pm Midnight - 2:59am</b>	<b>Sunday</b>	<b>August</b>
		(66%)	(33%)	(33%)



### House District 42 Alcohol-Related Crashes

Interstate Crashes                      Non-interstate Crashes  
 ● Fatal                                      ● Fatal  
 ⊕ Serious Injury                          ⊕ Serious Injury

The blue gradient represents the density of all alcohol-related crashes.

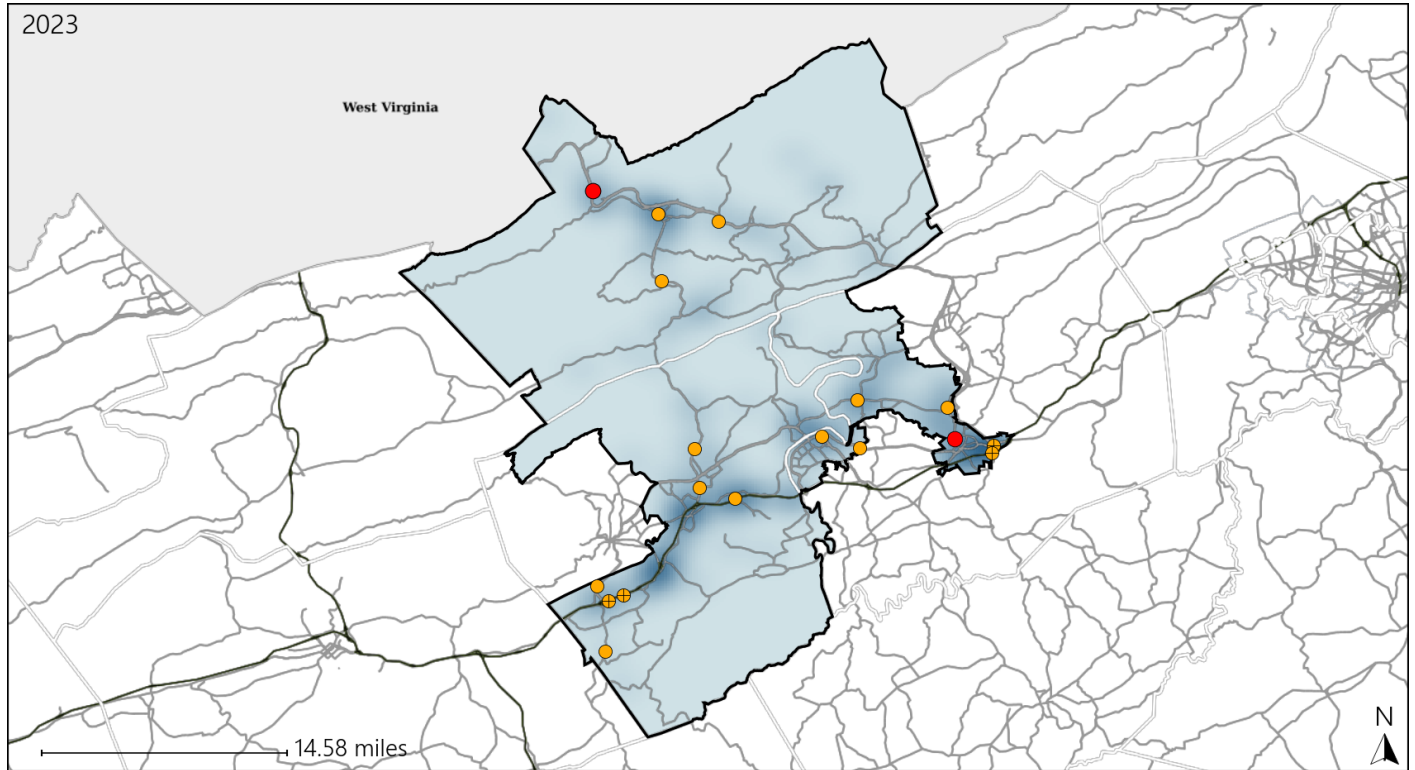


Available Crash Data - Calendar Year (CY)	CY 2020	CY 2021	CY 2022	CY 2023
Total Crashes	1067	1255	1354	1301
Fatal Crashes	11	9	14	6
Injury Crashes	350	393	439	407
Alcohol-Related Fatal Crashes	2	2	1	1
Percent of Alcohol-Related Fatal Crashes to Total Fatal Crashes	18%	22%	7%	17%
Alcohol-Related Injury Crashes	27	24	40	21
Percent of Alcohol-Related Injury Crashes to Total Injury Crashes	8%	6%	9%	5%

# Virginia House District 42 Speed Crash Statistics

Report Generated May, 2024

	Count	Highest Time Period(s)	Highest Day(s)	Highest Month(s)
<b>Fatal Crashes</b>	<b>3</b>	3:00pm - 5:59pm	Friday • Saturday	February • May
<b>Resulting Fatalities</b>	<b>3</b>	6:00pm - 8:59pm (66%)	(66%)	(66%)
<b>Serious Injury Crashes</b>	<b>16</b>	3:00pm - 5:59pm (31%)	Saturday (31%)	July (19%)



### House District 42 Speed-Related Crashes

Interstate Crashes                      Non-interstate Crashes  
 ● Fatal                                      ● Fatal  
 ⊕ Serious Injury                          ⊕ Serious Injury

The blue gradient represents the density of all speed-related crashes.

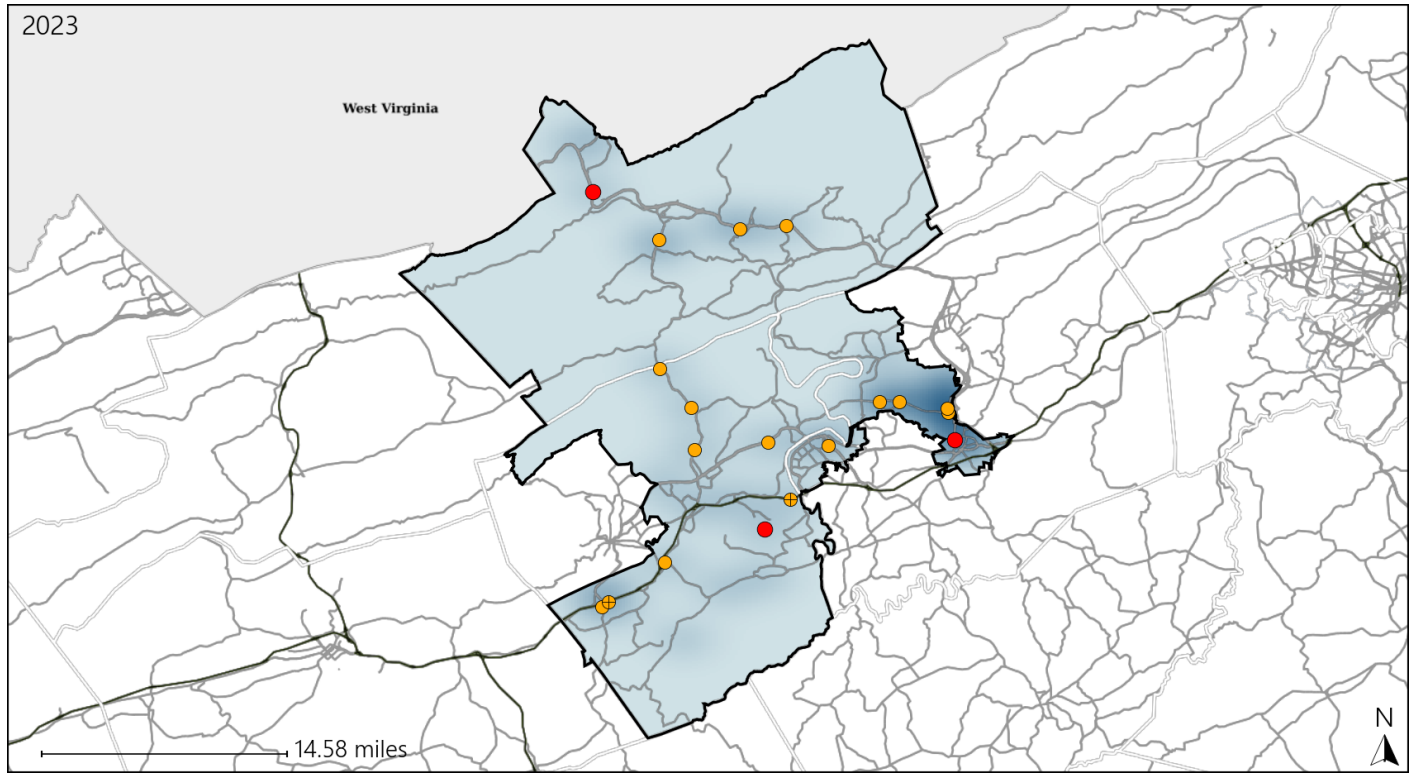


Available Crash Data - Calendar Year (CY)	CY 2020	CY 2021	CY 2022	CY 2023
Total Crashes	1067	1255	1354	1301
Fatal Crashes	11	9	14	6
Injury Crashes	350	393	439	407
Speed-Related Fatal Crashes	4	4	5	3
Percent of Speed-Related Fatal Crashes to Total Fatal Crashes	36%	44%	36%	50%
Speed-Related Injury Crashes	67	76	90	65
Percent of Speed-Related Injury Crashes to Total Injury Crashes	19%	19%	21%	16%

# Virginia House District 42 Unrestrained Crash Statistics

Report Generated May, 2024

	Count	Highest Time Period(s)	Highest Day(s)	Highest Month(s)
<b>Fatal Crashes</b>	<b>3</b>	3:00pm - 5:59pm	Saturday • Thursday	February • November
<b>Unrestrained Fatalities</b>	<b>3</b>	9:00pm - 11:59pm (66%)	(66%)	(66%)
<b>Serious Injury Crashes</b>	<b>16</b>	6:00pm - 8:59pm	Wednesday	December • June
		9:00am - 11:59am (38%)	(25%)	(38%)



### House District 42 Unrestrained-Related Crashes

- |                    |                        |
|--------------------|------------------------|
| Interstate Crashes | Non-interstate Crashes |
| ● Fatal            | ● Fatal                |
| ⊕ Serious Injury   | ⊕ Serious Injury       |

The blue gradient represents the density of all unrestrained-related crashes.



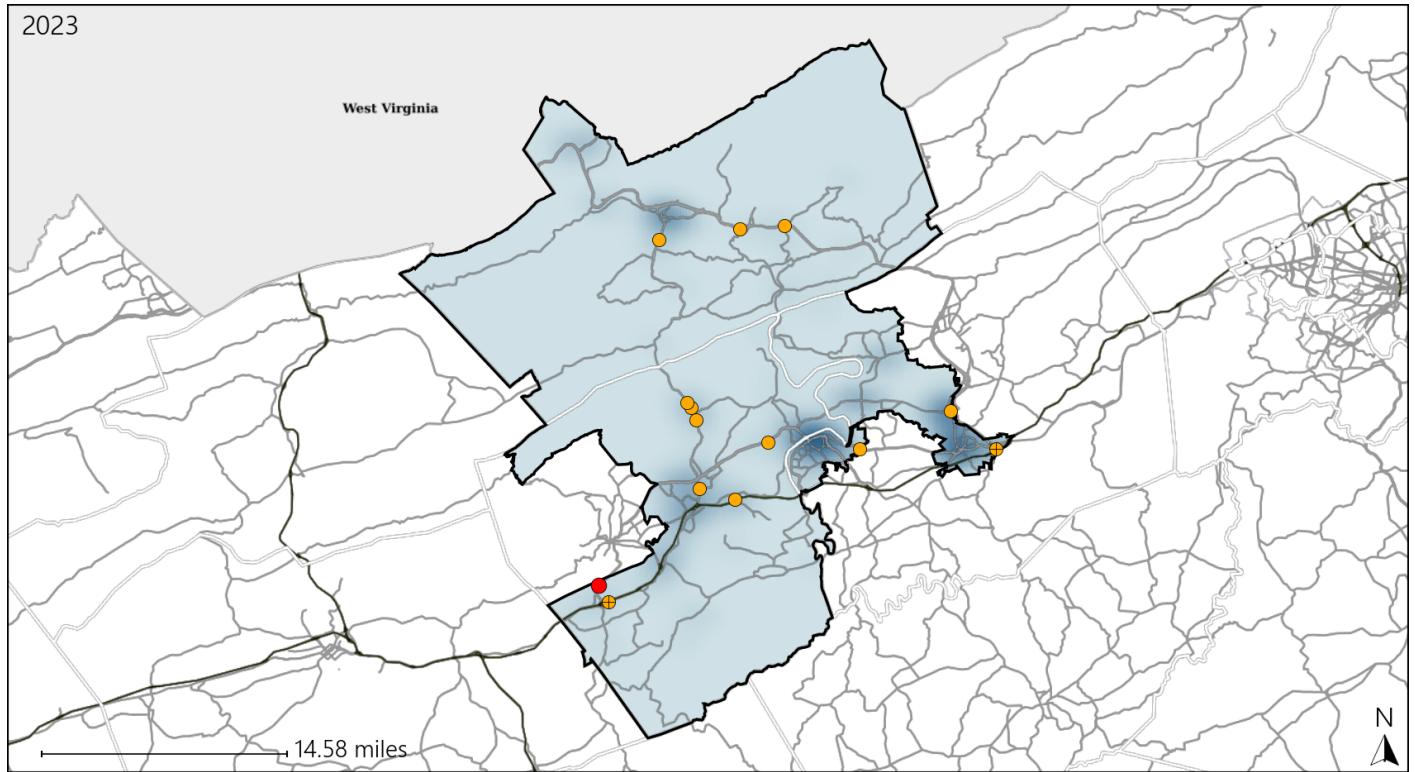
Available Crash Data - Calendar Year (CY)	CY 2020	CY 2021	CY 2022	CY 2023
Total Crashes	1067	1255	1354	1301
Fatalities	12	9	15	6
Injuries	500	531	634	594
Unrestrained Fatalities	5	5	5	3
Percent of Unrestrained Fatalities to Total Fatalities	42%	56%	33%	50%
Unrestrained Injuries	40	39	64	46
Percent of Unrestrained Injuries to Total Injuries	8%	7%	10%	8%



# Virginia House District 42 Distracted Driving Crash Statistics

Report Generated May, 2024

	Count	Highest Time Period(s)	Highest Day(s)	Highest Month(s)
<b>Fatal Crashes</b>	<b>1</b>	<b>3:00pm - 5:59pm</b>	<b>Monday</b>	<b>January</b>
<b>Resulting Fatalities</b>	<b>1</b>	(100%)	(100%)	(100%)
<b>Serious Injury Crashes</b>	<b>13</b>	<b>6:00am - 8:59am</b>	<b>Friday • Monday</b>	<b>July</b>
		(23%)	(46%)	(31%)



## House District 42 Distracted Driving-Related Crashes

- |                    |                        |
|--------------------|------------------------|
| Interstate Crashes | Non-interstate Crashes |
| Fatal              | Fatal                  |
| Serious Injury     | Serious Injury         |

The blue gradient represents the density of all distracted driving-related crashes.



Available Crash Data - Calendar Year (CY)	CY 2020	CY 2021	CY 2022	CY 2023
Total Crashes	1067	1255	1354	1301
Fatal Crashes	11	9	14	6
Injury Crashes	350	393	439	407
Distracted Driving-Related Fatal Crashes	1	2	1	1
Percent of Distracted Driving-Related Fatal Crashes to Total Fatal Crashes	9%	22%	7%	17%
Distracted Driving-Related Injury Crashes	72	65	83	85
Percent of Distracted Driving-Related Injury Crashes to Total Injury Crashes	21%	17%	19%	21%