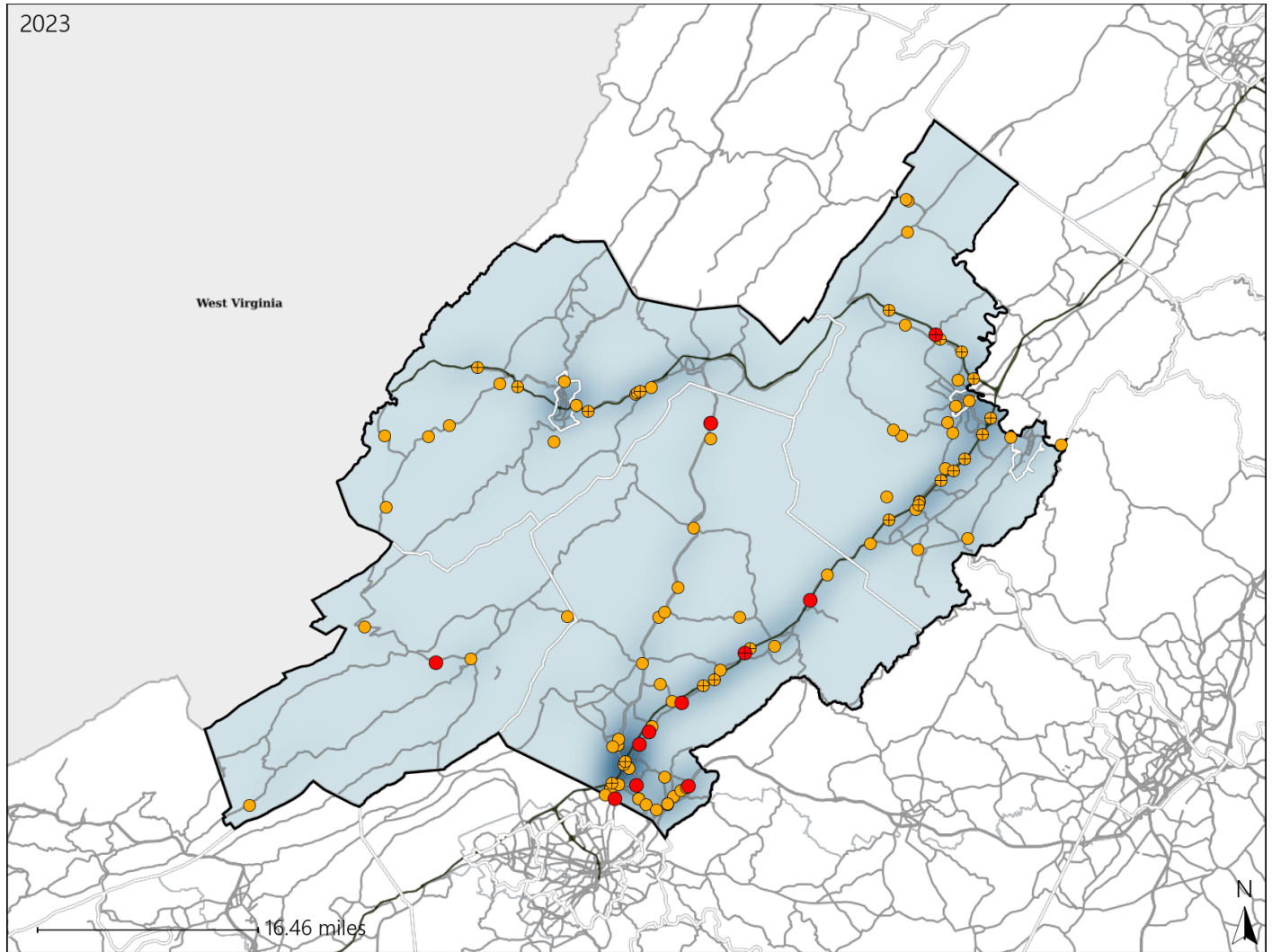


Virginia House District 37 Crash Statistics

Report Generated May, 2024

	Count	Highest Time Period(s)	Highest Day(s)	Highest Month(s)
Fatal Crashes	12	3:00pm - 5:59pm	Friday	July
Resulting Fatalities	12	(58%)	(33%)	(25%)
Serious Injury Crashes	89	3:00pm - 5:59pm	Friday • Wednesday	October
		(26%)	(38%)	(15%)



House District 37 Crashes

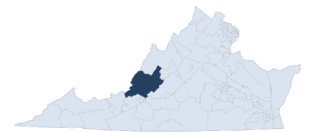
Interstate Crashes

- Fatal
- Serious Injury

Non-interstate Crashes

- Fatal
- Serious Injury

The blue gradient represents the density of all crashes.

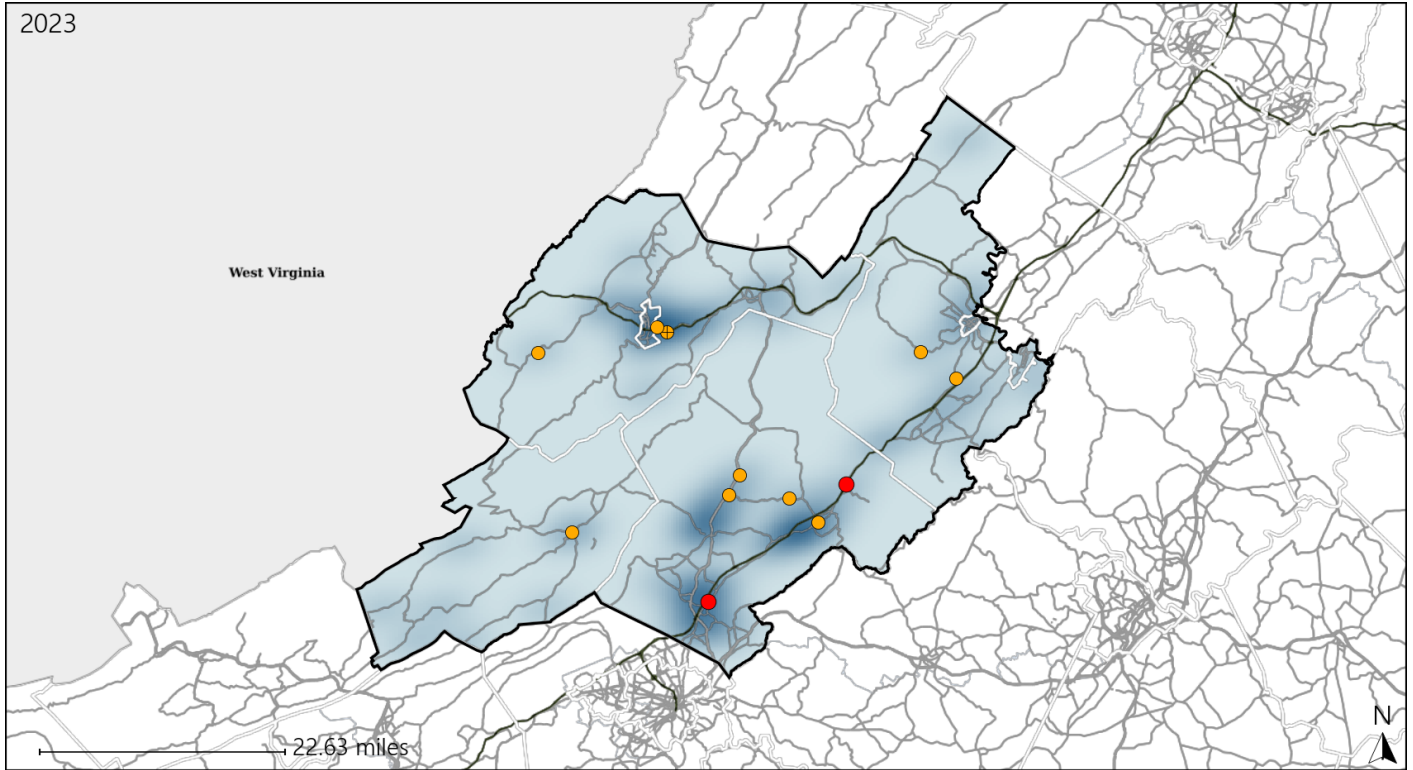


Available Crash Data - Calendar Year (CY)	CY 2020	CY 2021	CY 2022	CY 2023
Total Crashes	1582	1653	1590	1768
Fatal Crashes	6	18	17	12
Injury Crashes	369	412	356	354

Virginia House District 37 Alcohol Crash Statistics

Report Generated May, 2024

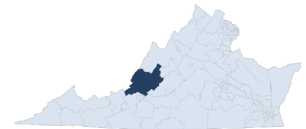
	Count	Highest Time Period(s)	Highest Day(s)	Highest Month(s)
Fatal Crashes	2	3:00pm - 5:59pm	Friday • Sunday	January • July
Resulting Fatalities	2	(100%)	(100%)	(100%)
Serious Injury Crashes	10	9:00pm - 11:59pm	Friday • Wednesday	November
		(40%)	(80%)	(20%)



House District 37 Alcohol-Related Crashes

Interstate Crashes Non-interstate Crashes
 ● Fatal ● Fatal
 ⊕ Serious Injury ⊕ Serious Injury

The blue gradient represents the density of all alcohol-related crashes.

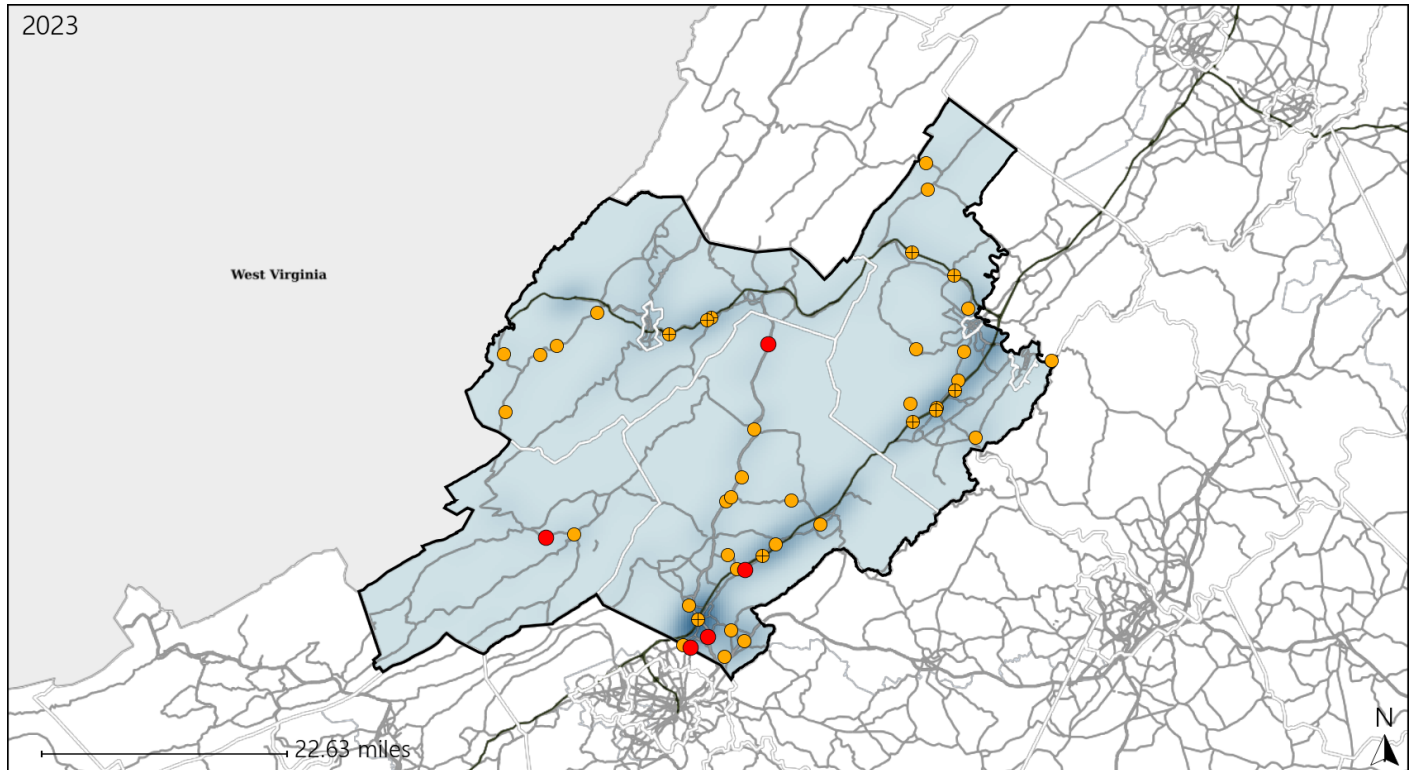


Available Crash Data - Calendar Year (CY)	CY 2020	CY 2021	CY 2022	CY 2023
Total Crashes	1582	1653	1590	1768
Fatal Crashes	6	18	17	12
Injury Crashes	369	412	356	354
Alcohol-Related Fatal Crashes	2	6	4	2
Percent of Alcohol-Related Fatal Crashes to Total Fatal Crashes	33%	33%	24%	17%
Alcohol-Related Injury Crashes	20	34	15	26
Percent of Alcohol-Related Injury Crashes to Total Injury Crashes	5%	8%	4%	7%

Virginia House District 37 Speed Crash Statistics

Report Generated May, 2024

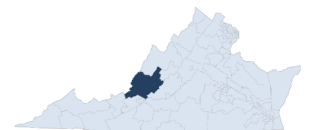
	Count	Highest Time Period(s)	Highest Day(s)	Highest Month(s)
Fatal Crashes	5	3:00pm - 5:59pm	Friday	July
Resulting Fatalities	5	(40%)	(40%)	(40%)
Serious Injury Crashes	40	9:00am - 11:59am	Sunday	August • May
		(22%)	(20%)	(24%)



House District 37 Speed-Related Crashes

Interstate Crashes Non-interstate Crashes
 ● Fatal ● Fatal
 ⊕ Serious Injury ⊕ Serious Injury

The blue gradient represents the density of all speed-related crashes.

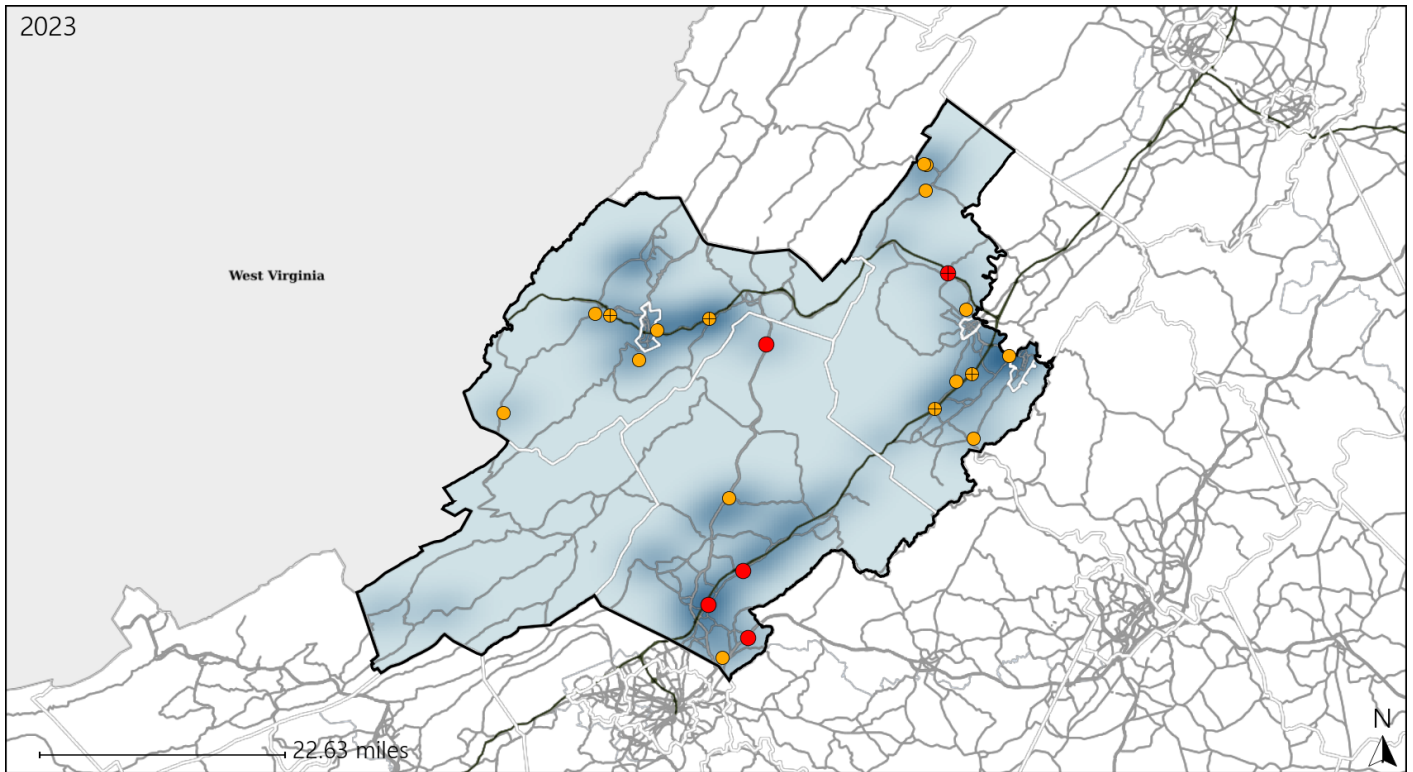


Available Crash Data - Calendar Year (CY)	CY 2020	CY 2021	CY 2022	CY 2023
Total Crashes	1582	1653	1590	1768
Fatal Crashes	6	18	17	12
Injury Crashes	369	412	356	354
Speed-Related Fatal Crashes	2	12	6	5
Percent of Speed-Related Fatal Crashes to Total Fatal Crashes	33%	67%	35%	42%
Speed-Related Injury Crashes	103	132	111	125
Percent of Speed-Related Injury Crashes to Total Injury Crashes	28%	32%	31%	35%

Virginia House District 37 Unrestrained Crash Statistics

Report Generated May, 2024

	Count	Highest Time Period(s)	Highest Day(s)	Highest Month(s)
Fatal Crashes	5	3:00pm - 5:59pm	Friday	August • July
Unrestrained Fatalities	5	(80%)	(40%)	(40%)
Serious Injury Crashes	17	6:00pm - 8:59pm Noon - 2:59pm	Friday	May • October
		(48%)	(35%)	(48%)



House District 37 Unrestrained-Related Crashes

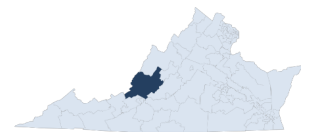
Interstate Crashes

Non-interstate Crashes

- Fatal
- ⊕ Serious Injury

- Fatal
- Serious Injury

The blue gradient represents the density of all unrestrained-related crashes.

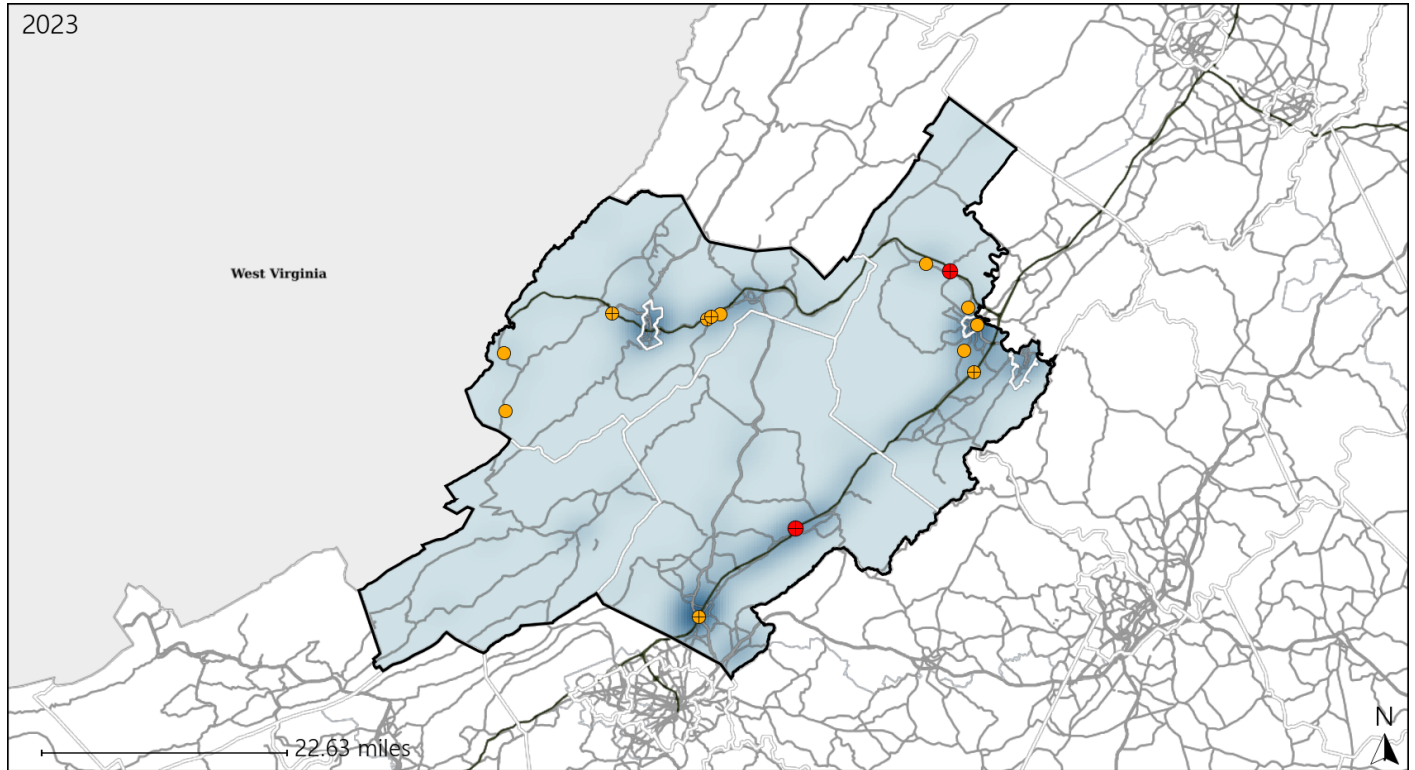


Available Crash Data - Calendar Year (CY)	CY 2020	CY 2021	CY 2022	CY 2023
Total Crashes	1582	1653	1590	1768
Fatalities	7	20	18	12
Injuries	508	587	474	500
Unrestrained Fatalities	1	12	7	5
Percent of Unrestrained Fatalities to Total Fatalities	14%	60%	39%	42%
Unrestrained Injuries	68	65	43	57
Percent of Unrestrained Injuries to Total Injuries	13%	11%	9%	11%

Virginia House District 37 Distracted Driving Crash Statistics

Report Generated May, 2024

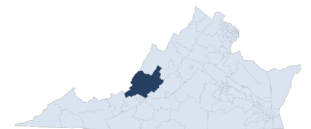
	Count	Highest Time Period(s)	Highest Day(s)	Highest Month(s)
Fatal Crashes	2	3:00pm - 5:59pm	Friday • Wednesday	August • September
Resulting Fatalities	2	Noon - 2:59pm (100%)	(100%)	(100%)
Serious Injury Crashes	12	3:00pm - 5:59pm (33%)	Monday • Tuesday (50%)	August • October (66%)



House District 37 Distracted Driving-Related Crashes

- | | |
|--------------------|------------------------|
| Interstate Crashes | Non-interstate Crashes |
| Fatal | Fatal |
| Serious Injury | Serious Injury |

The blue gradient represents the density of all distracted driving-related crashes.



Available Crash Data - Calendar Year (CY)	CY 2020	CY 2021	CY 2022	CY 2023
Total Crashes	1582	1653	1590	1768
Fatal Crashes	6	18	17	12
Injury Crashes	369	412	356	354
Distracted Driving-Related Fatal Crashes	4	0	2	2
Percent of Distracted Driving-Related Fatal Crashes to Total Fatal Crashes	67%	0%	12%	17%
Distracted Driving-Related Injury Crashes	53	57	46	71
Percent of Distracted Driving-Related Injury Crashes to Total Injury Crashes	14%	14%	13%	20%