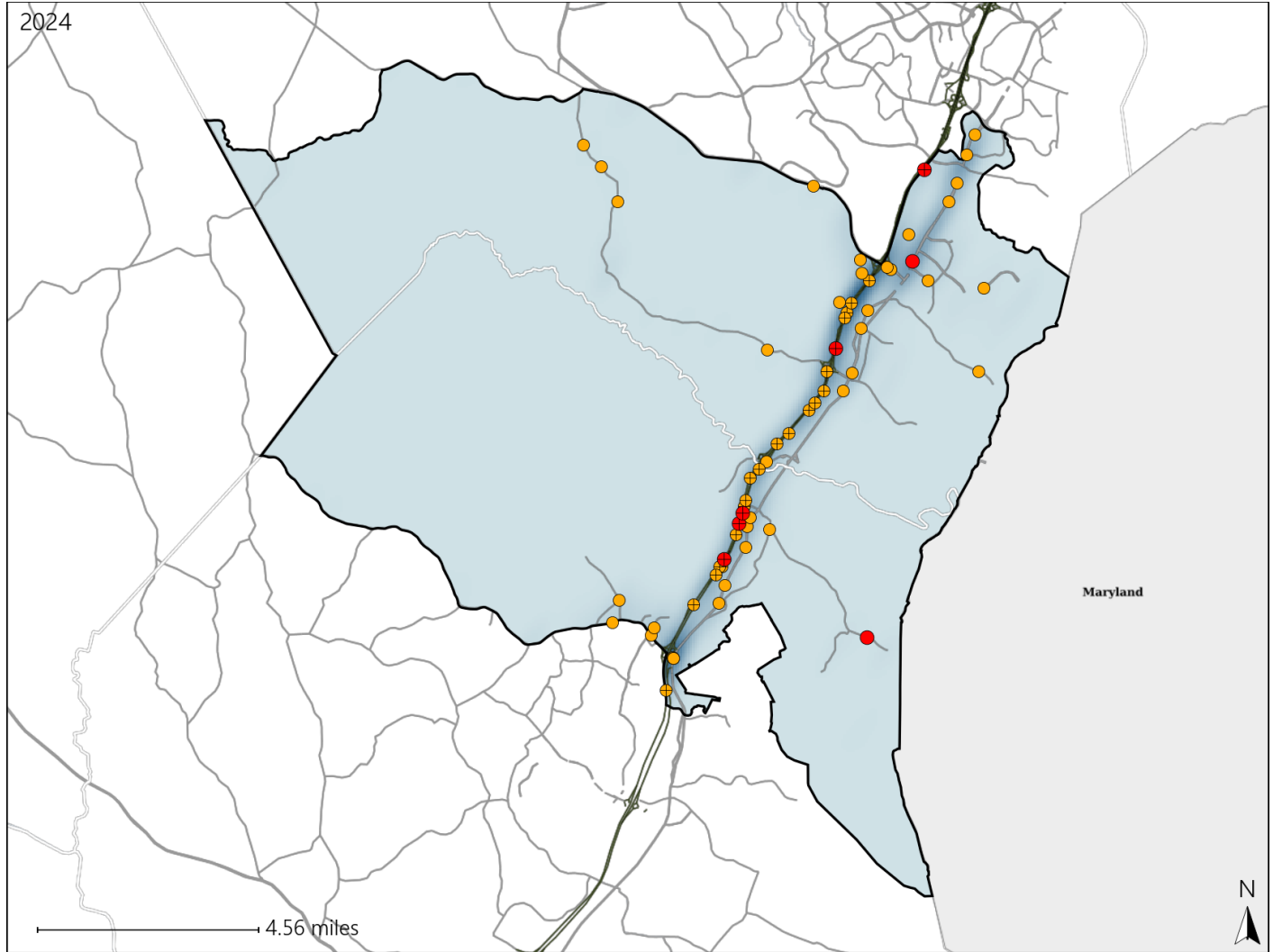


Virginia House District 23 Crash Statistics

Report Generated March, 2025

	Count	Highest Time Period(s)	Highest Day(s)	Highest Month(s)
Fatal Crashes	7	3:00am - 5:59am	Thursday	April
Resulting Fatalities	7	(43%)	(29%)	(29%)
Serious Injury Crashes	56	3:00pm - 5:59pm	Monday	August
		(23%)	(27%)	(16%)



House District 23 Crashes

Interstate Crashes

- Fatal
- Serious Injury

Non-interstate Crashes

- Fatal
- Serious Injury

The blue gradient represents the density of all crashes.



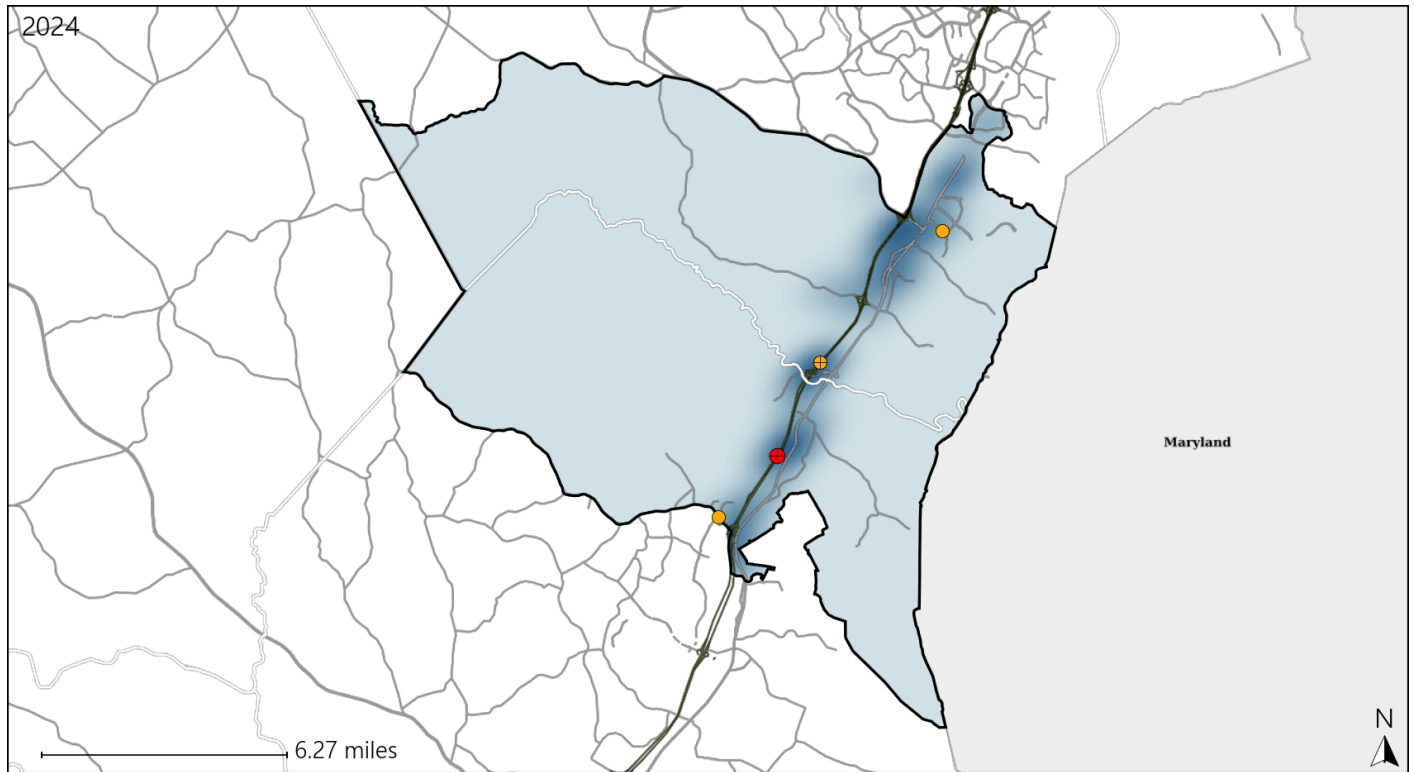
Available Crash Data - Calendar Year (CY)	CY 2021	CY 2022	CY 2023	CY 2024
Total Crashes	1350	1392	1356	1444
Fatal Crashes	4	8	8	7
Injury Crashes	361	365	356	430

Report of Crashes for January 1st - December 31st, 2024

Virginia House District 23 Alcohol Crash Statistics

Report Generated March, 2025

	Count	Highest Time Period(s)	Highest Day(s)	Highest Month(s)
Fatal Crashes	1	3:00am - 5:59am	Saturday	November
Resulting Fatalities	1	(100%)	(100%)	(100%)
Serious Injury Crashes	3	6:00am - 8:59am 9:00pm - 11:59pm	Monday • Sunday	April • December
		(66%)	(66%)	(66%)



House District 23 Alcohol-Related Crashes

Interstate Crashes

Non-interstate Crashes

● Fatal

● Fatal

⊕ Serious Injury

⊕ Serious Injury

The blue gradient represents the density of all alcohol-related crashes.

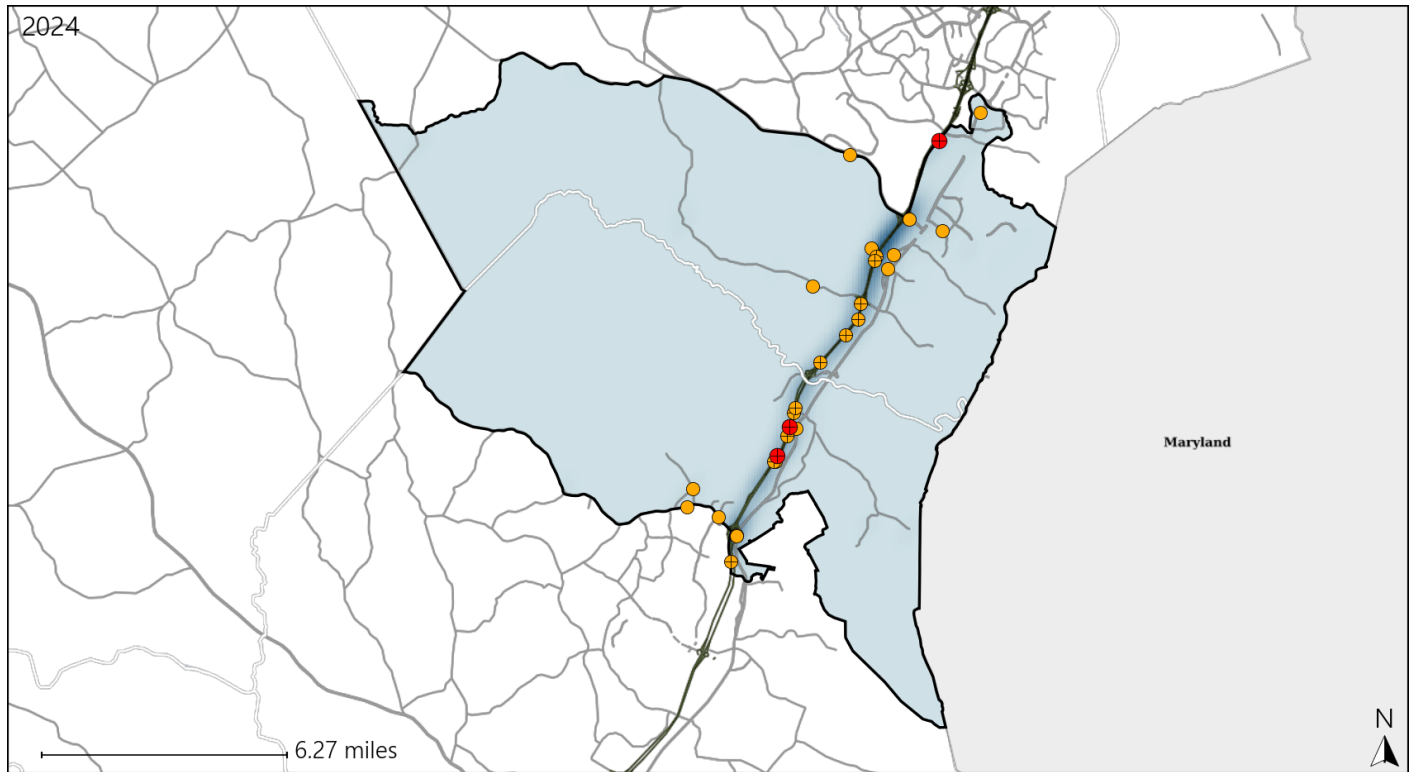


Available Crash Data - Calendar Year (CY)	CY 2021	CY 2022	CY 2023	CY 2024
Total Crashes	1350	1392	1356	1444
Fatal Crashes	4	8	8	7
Injury Crashes	361	365	356	430
Alcohol-Related Fatal Crashes	2	4	4	1
Percent of Alcohol-Related Fatal Crashes to Total Fatal Crashes	50%	50%	50%	14%
Alcohol-Related Injury Crashes	29	28	21	15
Percent of Alcohol-Related Injury Crashes to Total Injury Crashes	8%	8%	6%	3%

Virginia House District 23 Speed Crash Statistics

Report Generated March, 2025

	Count	Highest Time Period(s)	Highest Day(s)	Highest Month(s)
Fatal Crashes	3	3:00am - 5:59am	Saturday • Thursday	January • November
Resulting Fatalities	3	(67%)	(66%)	(66%)
Serious Injury Crashes	26	3:00pm - 5:59pm 9:00pm - 11:59pm	Monday	December • May
		(38%)	(35%)	(30%)



House District 23 Speed-Related Crashes

Interstate Crashes

Non-interstate Crashes

● Fatal

● Fatal

⊕ Serious Injury

⊕ Serious Injury

The blue gradient represents the density of all speed-related crashes.

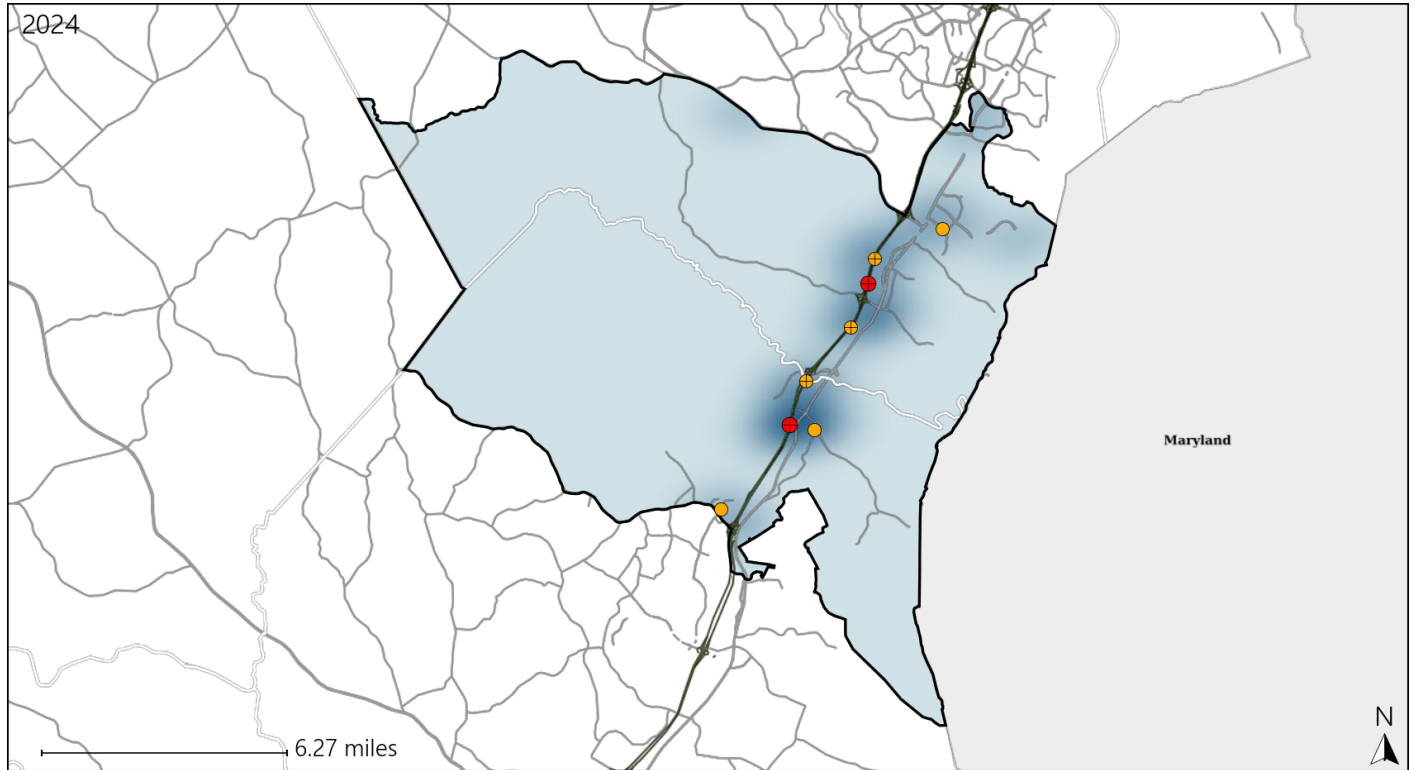


Available Crash Data - Calendar Year (CY)	CY 2021	CY 2022	CY 2023	CY 2024
Total Crashes	1350	1392	1356	1444
Fatal Crashes	4	8	8	7
Injury Crashes	361	365	356	430
Speed-Related Fatal Crashes	2	2	3	3
Percent of Speed-Related Fatal Crashes to Total Fatal Crashes	50%	25%	38%	43%
Speed-Related Injury Crashes	108	111	111	132
Percent of Speed-Related Injury Crashes to Total Injury Crashes	30%	30%	31%	31%

Virginia House District 23 Unrestrained Crash Statistics

Report Generated March, 2025

	Count	Highest Time Period(s)	Highest Day(s)	Highest Month(s)
Fatal Crashes	2	3:00am - 5:59am	Monday • Tuesday	April • January
Unrestrained Fatalities	2	Midnight - 2:59am (100%)	(100%)	(100%)
Serious Injury Crashes	6	9:00pm - 11:59pm	Sunday • Wednesday	August • December
		(50%)	(66%)	(66%)



House District 23 Unrestrained-Related Crashes

Interstate Crashes

Non-interstate Crashes

- Fatal
- Serious Injury

- Fatal
- Serious Injury

The blue gradient represents the density of all unrestrained-related crashes.

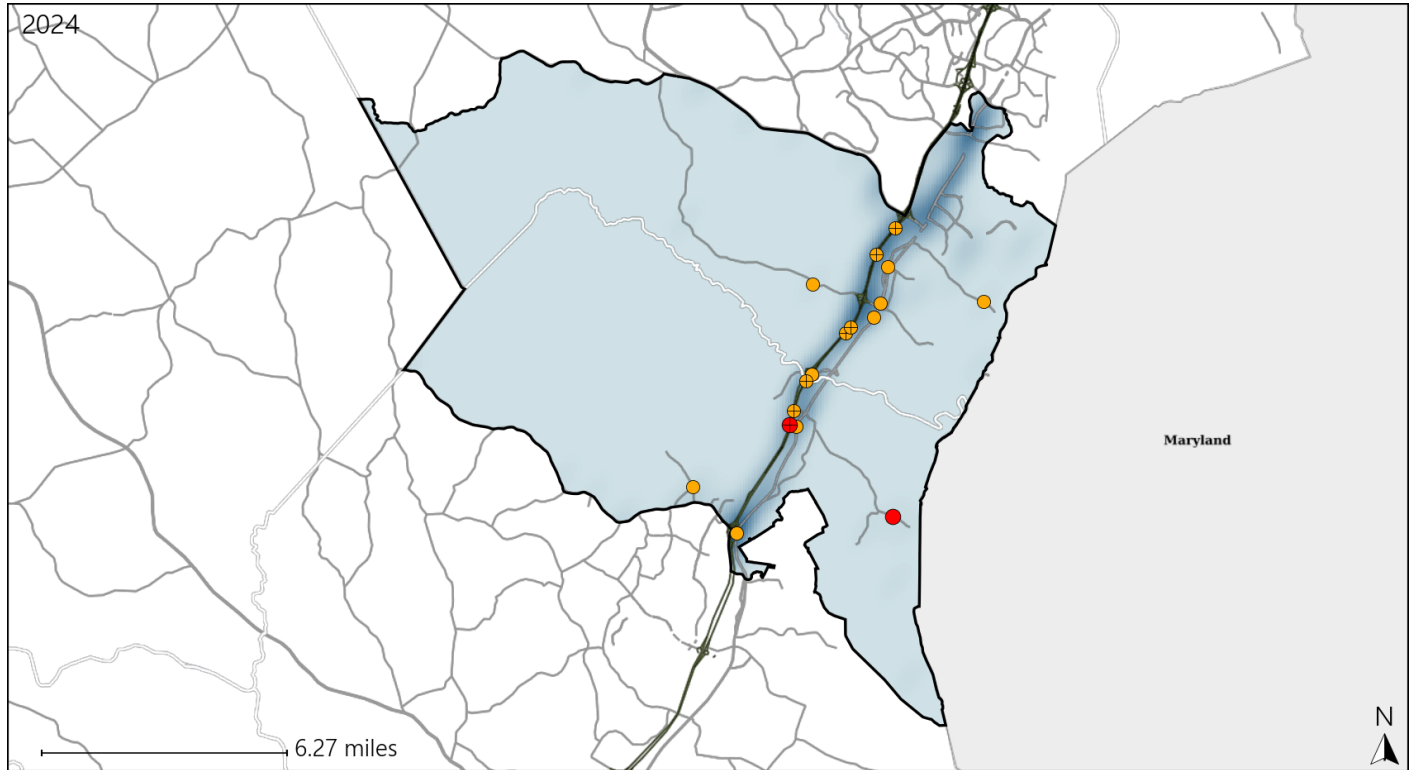


Available Crash Data - Calendar Year (CY)	CY 2021	CY 2022	CY 2023	CY 2024
Total Crashes	1350	1392	1356	1444
Fatalities	4	8	9	7
Injuries	594	586	599	712
Unrestrained Fatalities	0	0	3	2
Percent of Unrestrained Fatalities to Total Fatalities	0%	0%	33%	29%
Unrestrained Injuries	40	32	35	19
Percent of Unrestrained Injuries to Total Injuries	7%	5%	6%	3%

Virginia House District 23 Distracted Driving Crash Statistics

Report Generated March, 2025

	Count	Highest Time Period(s)	Highest Day(s)	Highest Month(s)
Fatal Crashes	2	Midnight - 2:59am	Friday • Tuesday	January • March
Resulting Fatalities	2	Noon - 2:59pm (100%)	(100%)	(100%)
Serious Injury Crashes	15	3:00pm - 5:59pm (33%)	Monday (40%)	August (33%)



House District 23 Distracted Driving-Related Crashes

Interstate Crashes

Non-interstate Crashes

- Fatal
- Serious Injury

- Fatal
- Serious Injury

The blue gradient represents the density of all distracted driving-related crashes.



Available Crash Data - Calendar Year (CY)	CY 2021	CY 2022	CY 2023	CY 2024
Total Crashes	1350	1392	1356	1444
Fatal Crashes	4	8	8	7
Injury Crashes	361	365	356	430
Distracted Driving-Related Fatal Crashes	1	1	1	2
Percent of Distracted Driving-Related Fatal Crashes to Total Fatal Crashes	25%	13%	13%	29%
Distracted Driving-Related Injury Crashes	83	86	87	100
Percent of Distracted Driving-Related Injury Crashes to Total Injury Crashes	23%	24%	24%	23%