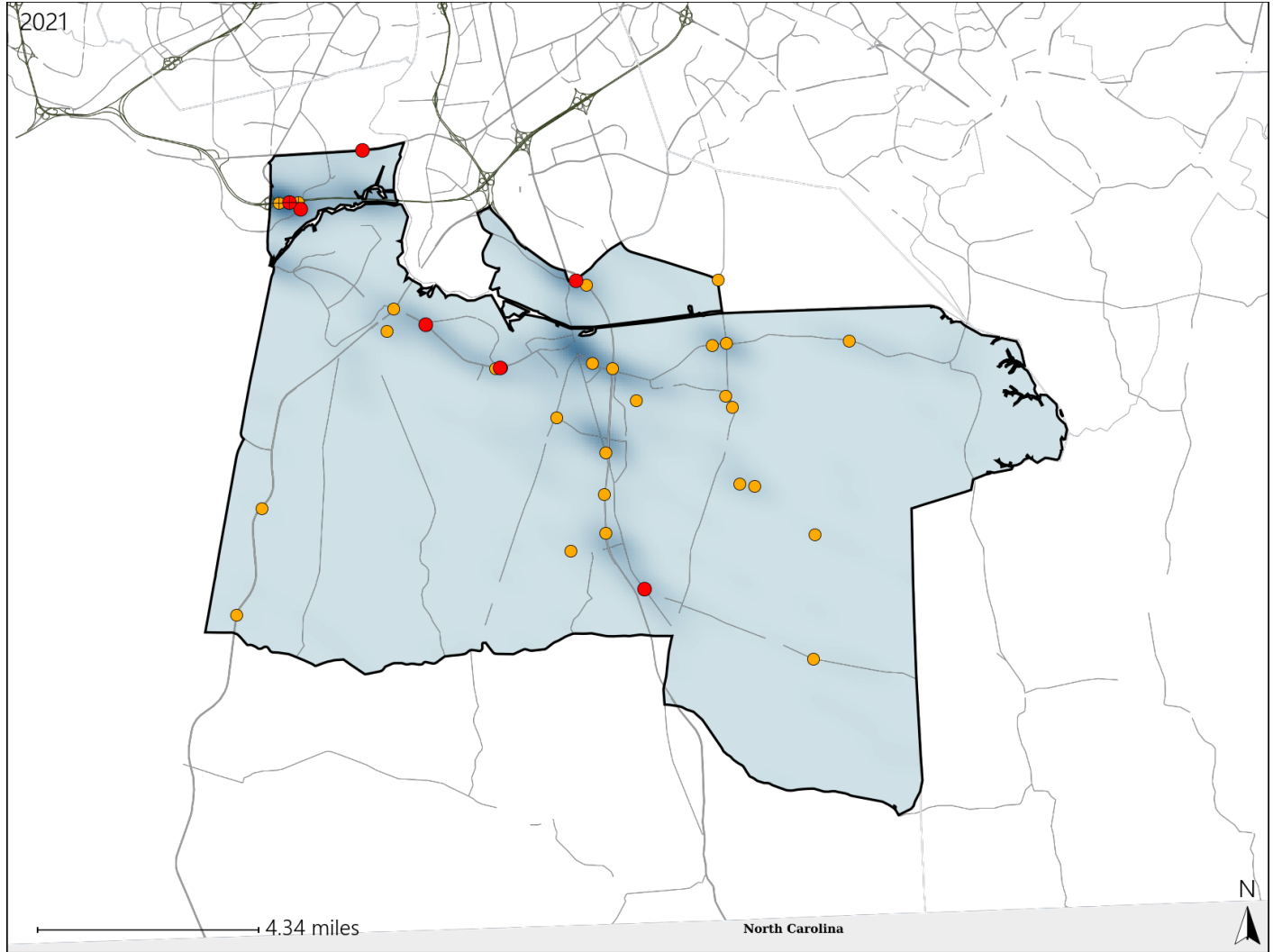


Virginia House District 78 Crash Statistics

Report Generated April, 2022

	Count	Highest Time Period(s)	Highest Day(s)	Highest Month(s)
Fatal Crashes	7	9:00pm - 11:59pm	Saturday	June
Resulting Fatalities	7	(57%)	(57%)	(29%)
Serious Injury Crashes	28	6:00pm - 8:59pm	Saturday	June
		(36%)	(25%)	(21%)



House District 78 Crashes

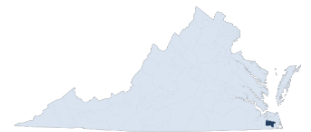
Interstate Crashes

- Fatal
- Serious Injury

Non-interstate Crashes

- Fatal
- Serious Injury

The blue gradient represents the density of all crashes.

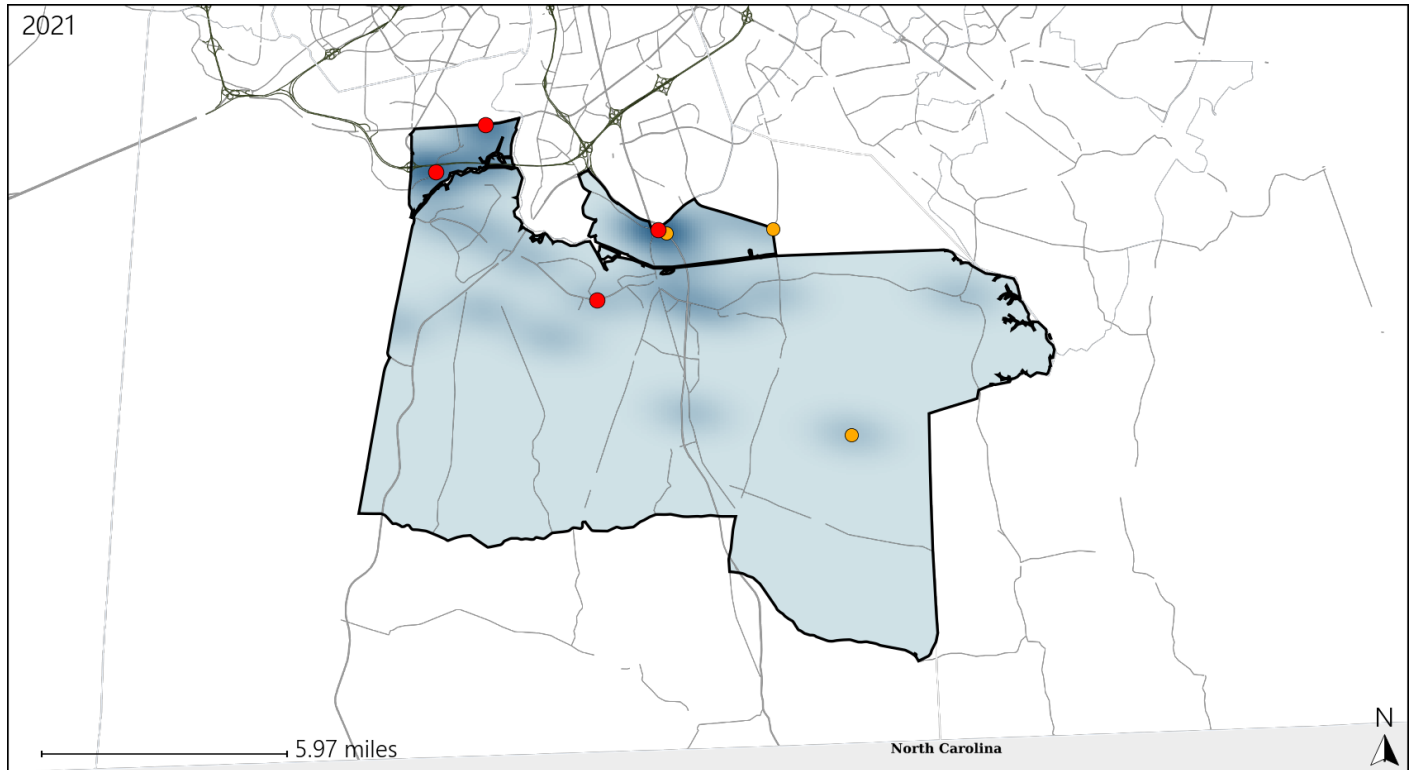


Available Crash Data - Calendar Year (CY)	CY 2018	CY 2019	CY 2020	CY 2021
Total Crashes	560	607	478	562
Fatal Crashes	2	2	1	7
Injury Crashes	246	261	167	218

Virginia House District 78 Alcohol Crash Statistics

Report Generated April, 2022

	Count	Highest Time Period(s)	Highest Day(s)	Highest Month(s)
Fatal Crashes	4	9:00pm - 11:59pm	Saturday	June • March
Resulting Fatalities	4	(50%)	(50%)	(50%)
Serious Injury Crashes	3	9:00pm - 11:59pm	Monday • Sunday	September
		(67%)	(66%)	(67%)



House District 78 Alcohol-Related Crashes

Interstate Crashes

Non-interstate Crashes

- Fatal
- Serious Injury

- Fatal
- Serious Injury

The blue gradient represents the density of all alcohol-related crashes.

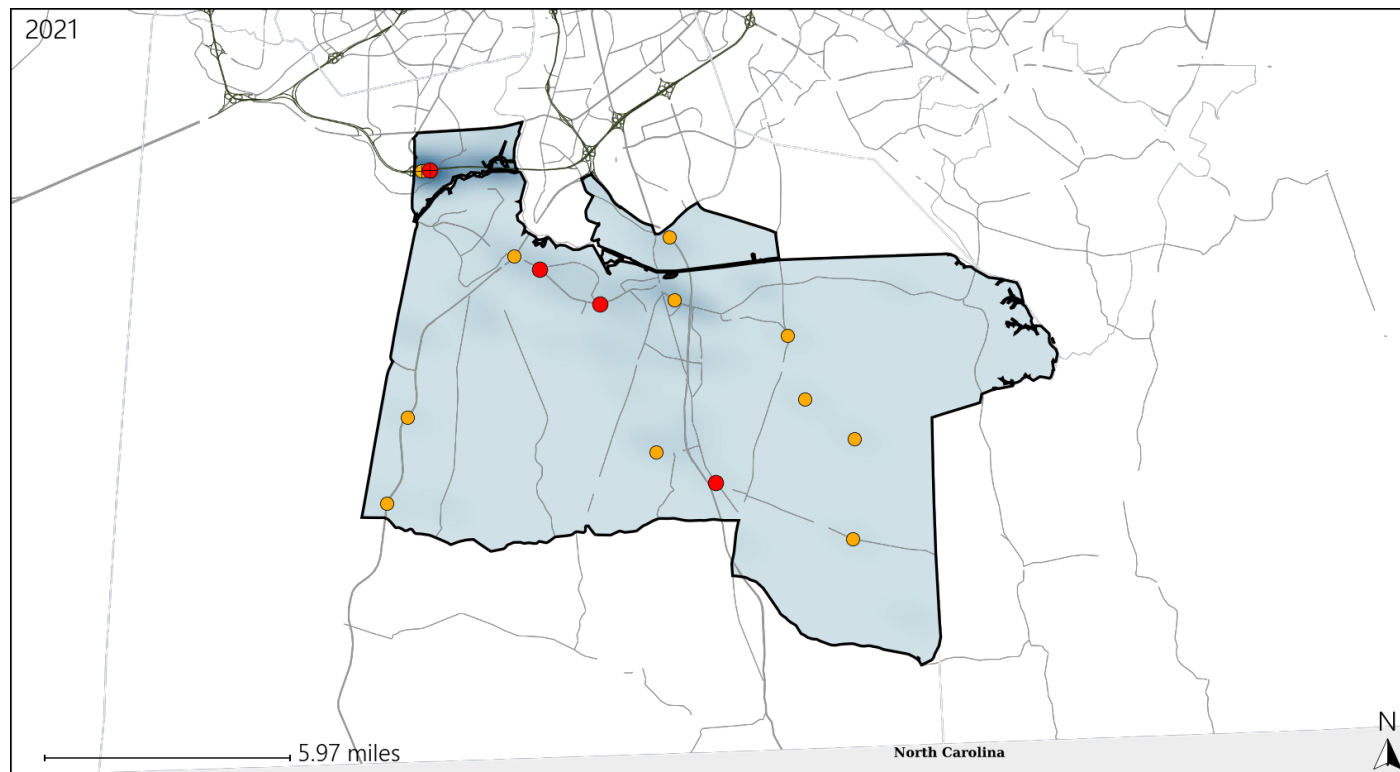


Available Crash Data - Calendar Year (CY)	CY 2018	CY 2019	CY 2020	CY 2021
Total Crashes	560	607	478	562
Fatal Crashes	2	2	1	7
Injury Crashes	246	261	167	218
Alcohol-Related Fatal Crashes	1	2	0	4
Percent of Alcohol-Related Fatal Crashes to Total Fatal Crashes	50%	100%	0%	57%
Alcohol-Related Injury Crashes	23	19	11	14
Percent of Alcohol-Related Injury Crashes to Total Injury Crashes	9%	7%	7%	6%

Virginia House District 78 Speed Crash Statistics

Report Generated April, 2022

	Count	Highest Time Period(s)	Highest Day(s)	Highest Month(s)
Fatal Crashes	4	9:00pm - 11:59pm	Saturday	June
Resulting Fatalities	4	(75%)	(50%)	(50%)
Serious Injury Crashes	11	6:00pm - 8:59pm	Tuesday	August + July
		(36%)	(27%)	(36%)



House District 78 Speed-Related Crashes

Interstate Crashes

Non-interstate Crashes

● Fatal

● Fatal

● Serious Injury

● Serious Injury

The blue gradient represents the density of all speed-related crashes.

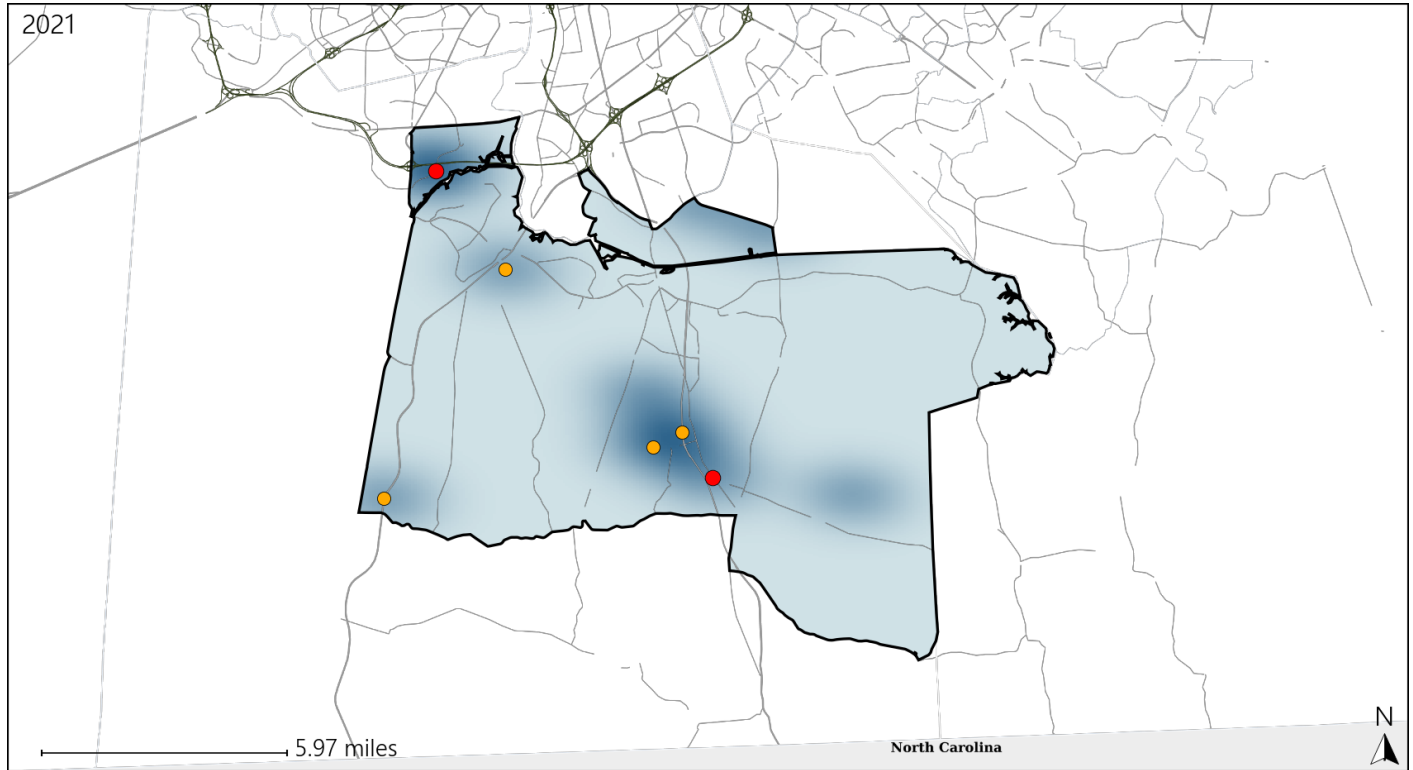


Available Crash Data - Calendar Year (CY)	CY 2018	CY 2019	CY 2020	CY 2021
Total Crashes	560	607	478	562
Fatal Crashes	2	2	1	7
Injury Crashes	246	261	167	218
Speed-Related Fatal Crashes	0	1	0	4
Percent of Speed-Related Fatal Crashes to Total Fatal Crashes	0%	50%	0%	57%
Speed-Related Injury Crashes	41	35	36	43
Percent of Speed-Related Injury Crashes to Total Injury Crashes	17%	13%	22%	20%

Virginia House District 78 Unrestrained Crash Statistics

Report Generated April, 2022

	Count	Highest Time Period(s)	Highest Day(s)	Highest Month(s)
Fatal Crashes	2	9:00pm - 11:59pm	Saturday • Sunday	February • March
Unrestrained Fatalities	2	Midnight - 2:59am (100%)	(100%)	(100%)
Serious Injury Crashes	4	6:00pm - 8:59pm (50%)	Saturday (50%)	May (50%)



House District 78 Unrestrained-Related Crashes

Interstate Crashes

Non-interstate Crashes

● Fatal

● Fatal

● Serious Injury

● Serious Injury

The blue gradient represents the density of all unrestrained-related crashes.



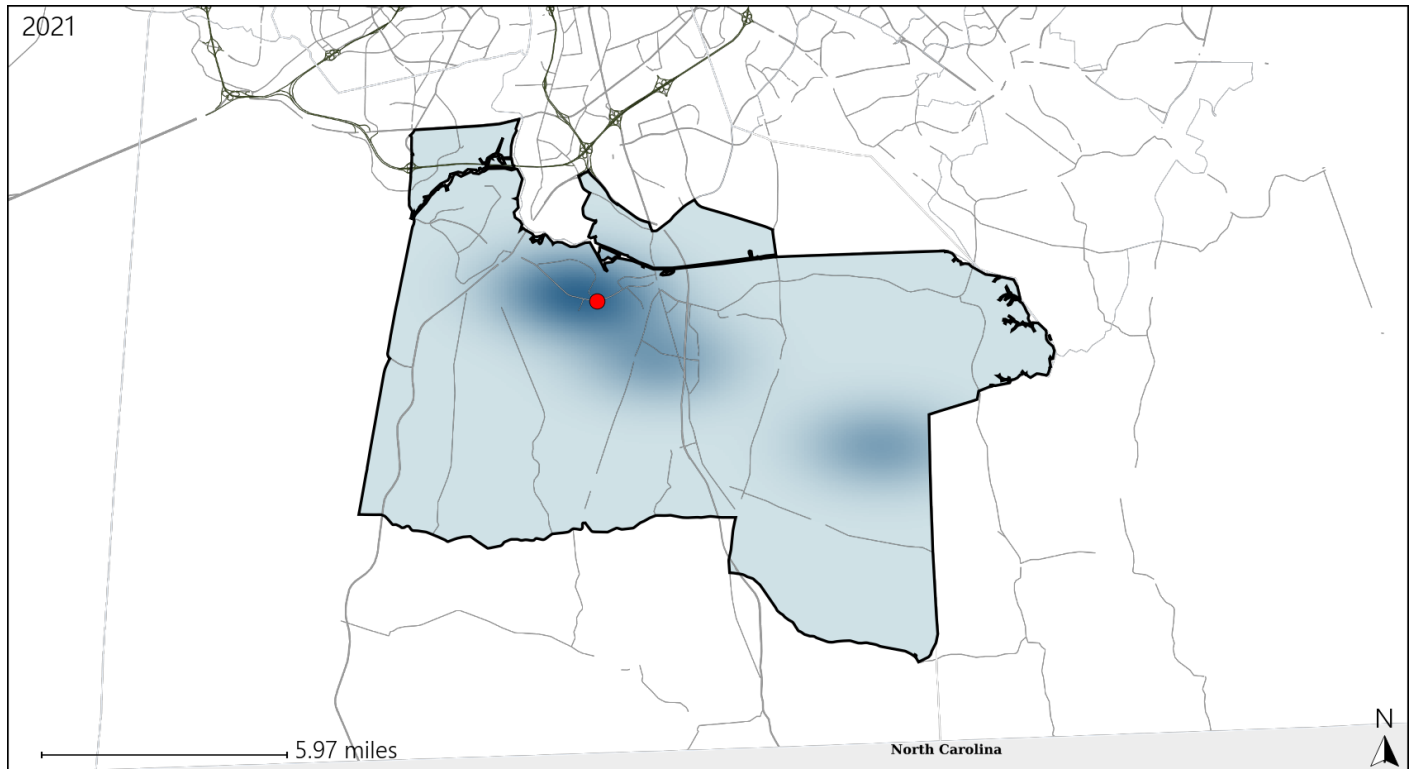
Available Crash Data - Calendar Year (CY)	CY 2018	CY 2019	CY 2020	CY 2021
Total Crashes	560	607	478	562
Fatalities	2	2	1	7
Injuries	396	417	255	348
Unrestrained Fatalities	0	2	0	2
Percent of Unrestrained Fatalities to Total Fatalities	0%	100%	0%	29%
Unrestrained Injuries	14	13	11	12
Percent of Unrestrained Injuries to Total Injuries	4%	3%	4%	3%

Report of Crashes for January 1st - December 31st, 2021

Virginia House District 78 Pedestrian Crash Statistics

Report Generated April, 2022

	Count	Highest Time Period(s)	Highest Day(s)	Highest Month(s)
Fatal Crashes	1	9:00pm - 11:59pm	Tuesday	June
Pedestrian Fatalities	1	(100%)	(100%)	(100%)
Serious Injury Crashes	0	-	-	-



House District 78 Pedestrian-Related Crashes

Interstate Crashes

Non-interstate Crashes

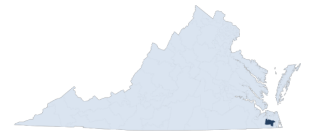
● Fatal

● Fatal

● Serious Injury

● Serious Injury

The blue gradient represents the density of all pedestrian-related crashes.

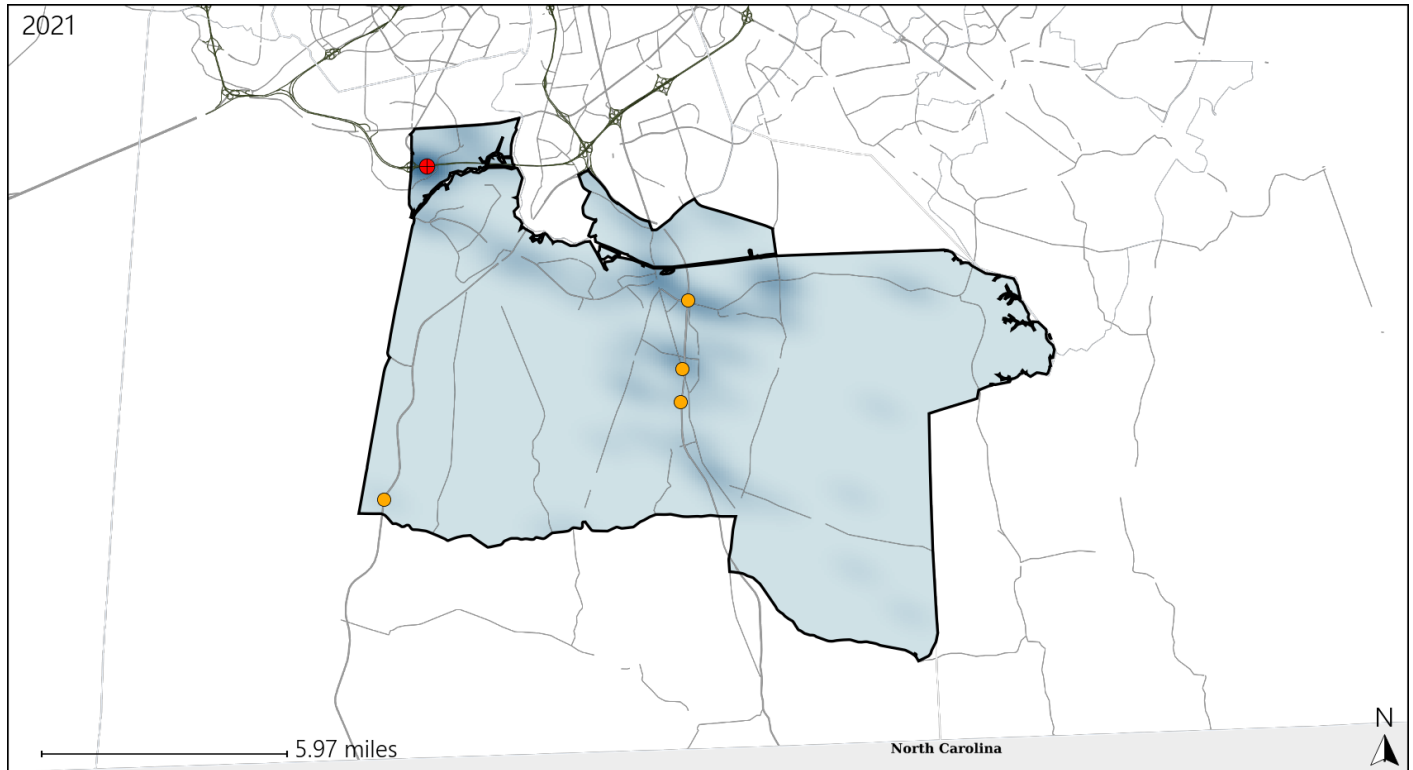


Available Crash Data - Calendar Year (CY)	CY 2018	CY 2019	CY 2020	CY 2021
Total Crashes	560	607	478	562
Fatal Crashes	2	2	1	7
Injury Crashes	246	261	167	218
Pedestrian-Related Fatal Crashes	0	0	0	1
Percent of Pedestrian-Related Fatal Crashes to Total Fatal Crashes	0%	0%	0%	14%
Pedestrian-Related Injury Crashes	7	5	6	3
Percent of Pedestrian-Related Injury Crashes to Total Injury Crashes	3%	2%	4%	1%

Virginia House District 78 Distracted Driving Crash Statistics

Report Generated April, 2022

	Count	Highest Time Period(s)	Highest Day(s)	Highest Month(s)
Fatal Crashes	1	9:00am - 11:59am	Thursday	July
Resulting Fatalities	1	(100%)	(100%)	(100%)
Serious Injury Crashes	4	Noon - 2:59pm	Sunday	January
		(75%)	(50%)	(50%)



House District 78 Distracted Driving-Related Crashes

Interstate Crashes

Non-interstate Crashes

- Fatal
- Serious Injury

- Fatal
- Serious Injury

The blue gradient represents the density of all distracted driving-related crashes.



Available Crash Data - Calendar Year (CY)	CY 2018	CY 2019	CY 2020	CY 2021
Total Crashes	560	607	478	562
Fatal Crashes	2	2	1	7
Injury Crashes	246	261	167	218
Distracted Driving-Related Fatal Crashes	0	1	0	1
Percent of Distracted Driving-Related Fatal Crashes to Total Fatal Crashes	0%	50%	0%	14%
Distracted Driving-Related Injury Crashes	61	50	41	51
Percent of Distracted Driving-Related Injury Crashes to Total Injury Crashes	25%	19%	25%	23%