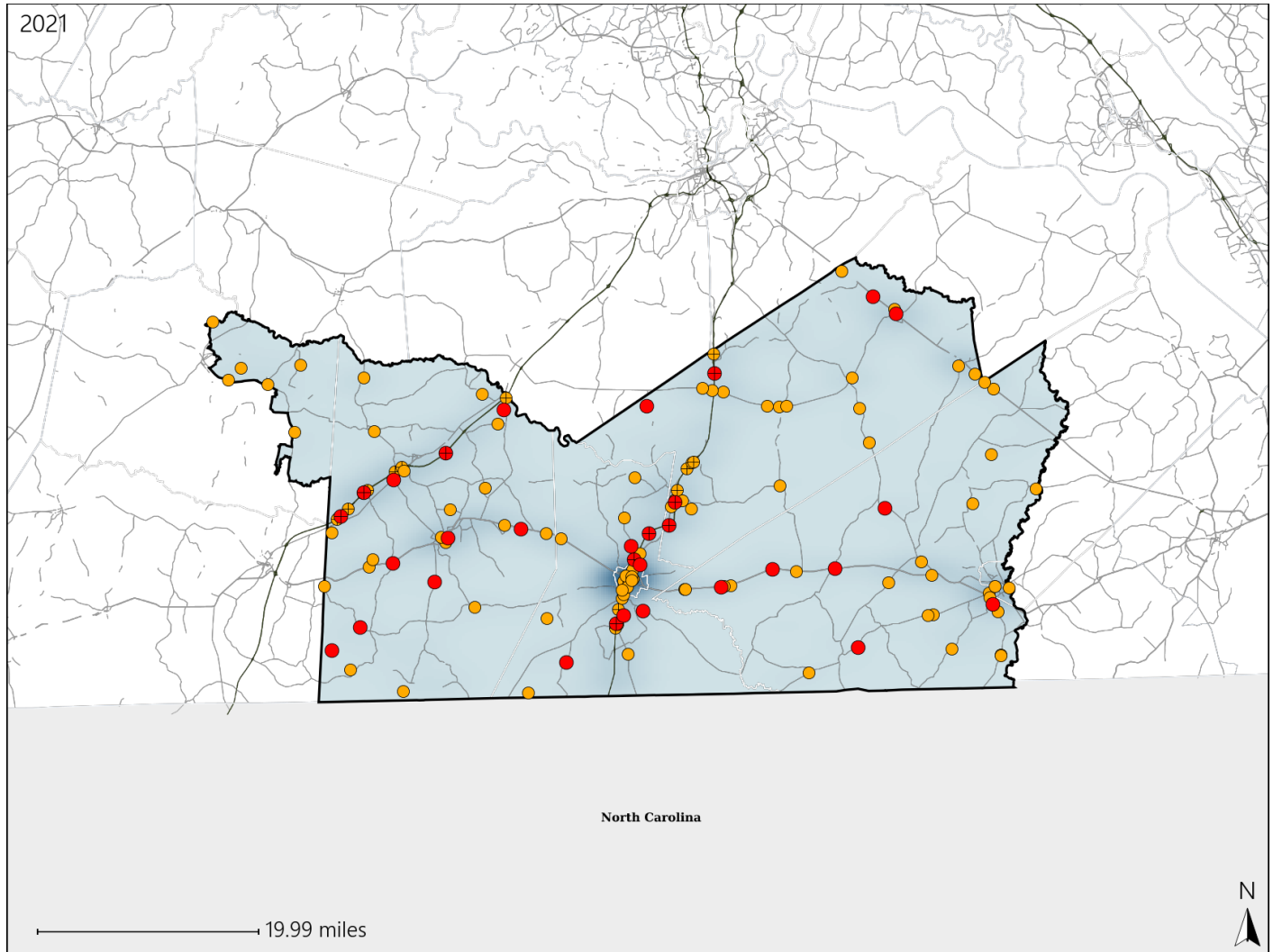


Virginia House District 75 Crash Statistics

Report Generated April, 2022

	Count	Highest Time Period(s)	Highest Day(s)	Highest Month(s)
Fatal Crashes	31	3:00pm - 5:59pm	Friday • Sunday	October
Resulting Fatalities	38	(29%)	(32%)	(19%)
Serious Injury Crashes	102	3:00pm - 5:59pm	Friday	April
		(21%)	(20%)	(13%)



House District 75 Crashes

Interstate Crashes

- Fatal
- Serious Injury

Non-interstate Crashes

- Fatal
- Serious Injury

The blue gradient represents the density of all crashes.



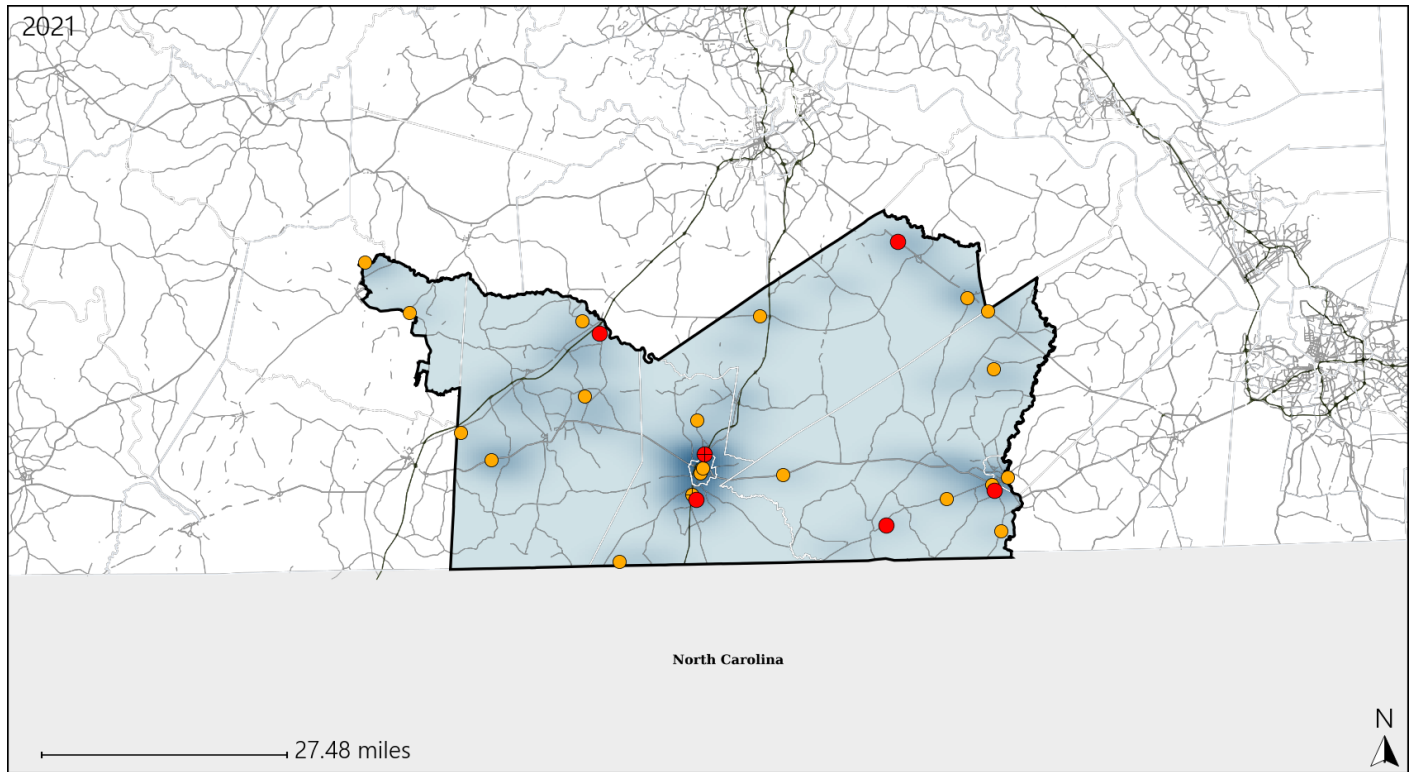
Available Crash Data - Calendar Year (CY)	CY 2018	CY 2019	CY 2020	CY 2021
Total Crashes	1316	1200	1405	1367
Fatal Crashes	20	26	18	31
Injury Crashes	526	435	533	492

Report of Crashes for January 1st - December 31st, 2021

Virginia House District 75 Alcohol Crash Statistics

Report Generated April, 2022

	Count	Highest Time Period(s)	Highest Day(s)	Highest Month(s)
Fatal Crashes	6	6:00pm - 8:59pm	Friday • Sunday	March • October
Resulting Fatalities	6	(50%)	(66%)	(66%)
Serious Injury Crashes	20	6:00pm - 8:59pm 9:00pm - 11:59pm	Sunday	October
		(70%)	(30%)	(25%)



House District 75 Alcohol-Related Crashes

Interstate Crashes

Non-interstate Crashes

● Fatal

● Fatal

⊕ Serious Injury

⊕ Serious Injury

The blue gradient represents the density of all alcohol-related crashes.

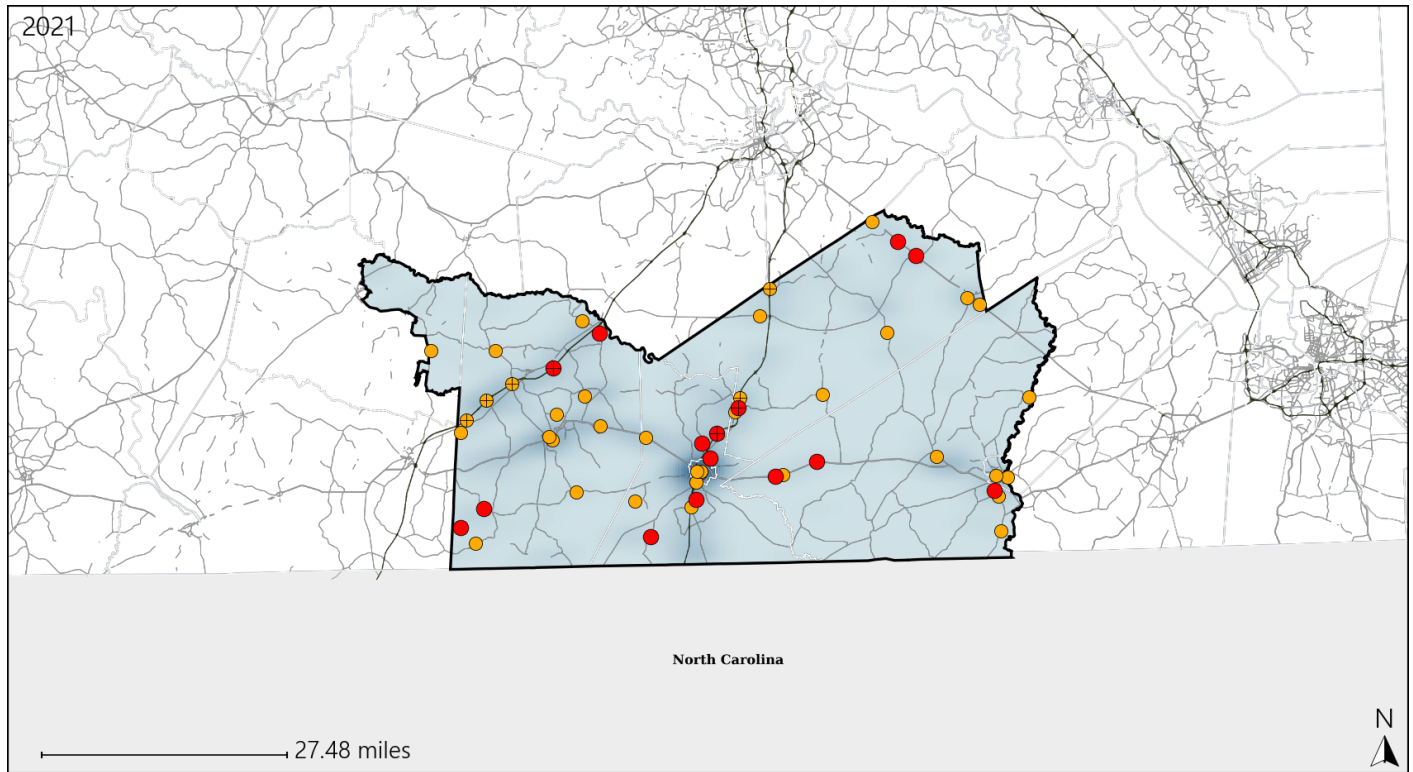


Available Crash Data - Calendar Year (CY)	CY 2018	CY 2019	CY 2020	CY 2021
Total Crashes	1316	1200	1405	1367
Fatal Crashes	20	26	18	31
Injury Crashes	526	435	533	492
Alcohol-Related Fatal Crashes	6	8	4	6
Percent of Alcohol-Related Fatal Crashes to Total Fatal Crashes	30%	31%	22%	19%
Alcohol-Related Injury Crashes	46	36	52	41
Percent of Alcohol-Related Injury Crashes to Total Injury Crashes	9%	8%	10%	8%

Virginia House District 75 Speed Crash Statistics

Report Generated April, 2022

	Count	Highest Time Period(s)	Highest Day(s)	Highest Month(s)
Fatal Crashes	15	3:00pm - 5:59pm	Sunday	October
Resulting Fatalities	20	(27%)	(33%)	(33%)
Serious Injury Crashes	38	3:00pm - 5:59pm	Saturday	April - August
		6:00pm - 8:59pm	(29%)	(32%)
		(42%)		



House District 75 Speed-Related Crashes

Interstate Crashes

Non-interstate Crashes

● Fatal

● Fatal

⊕ Serious Injury

⊕ Serious Injury

The blue gradient represents the density of all speed-related crashes.

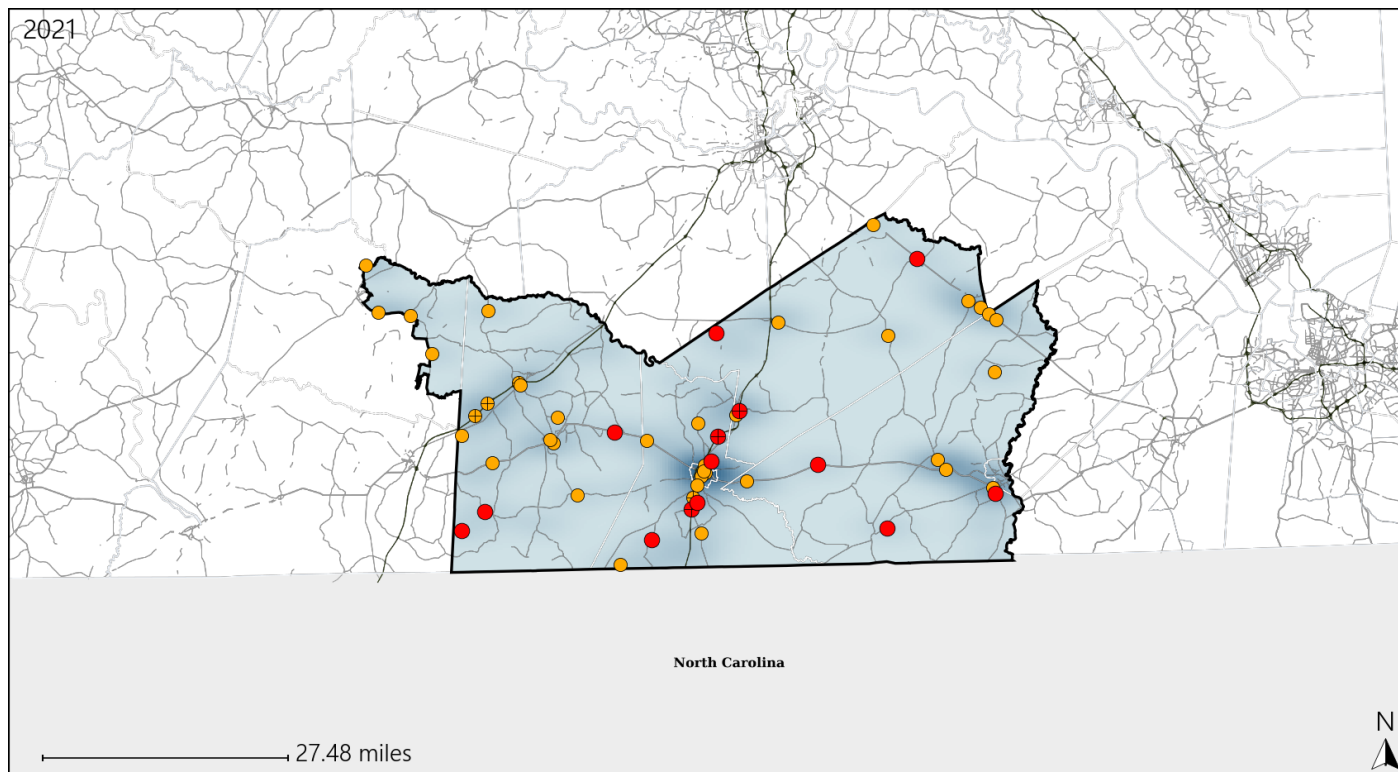


Available Crash Data - Calendar Year (CY)	CY 2018	CY 2019	CY 2020	CY 2021
Total Crashes	1316	1200	1405	1367
Fatal Crashes	20	26	18	31
Injury Crashes	526	435	533	492
Speed-Related Fatal Crashes	5	11	7	15
Percent of Speed-Related Fatal Crashes to Total Fatal Crashes	25%	42%	39%	48%
Speed-Related Injury Crashes	149	130	138	140
Percent of Speed-Related Injury Crashes to Total Injury Crashes	28%	30%	26%	28%

Virginia House District 75 Unrestrained Crash Statistics

Report Generated April, 2022

	Count	Highest Time Period(s)	Highest Day(s)	Highest Month(s)
Fatal Crashes	14	3:00pm - 5:59pm	Sunday	October
Unrestrained Fatalities	15	(29%)	(29%)	(21%)
Serious Injury Crashes	38	9:00pm - 11:59pm	Tuesday	February • January
		(24%)	(24%)	(26%)



House District 75 Unrestrained-Related Crashes

Interstate Crashes

- Fatal
- Serious Injury

Non-interstate Crashes

- Fatal
- Serious Injury

The blue gradient represents the density of all unrestrained-related crashes.



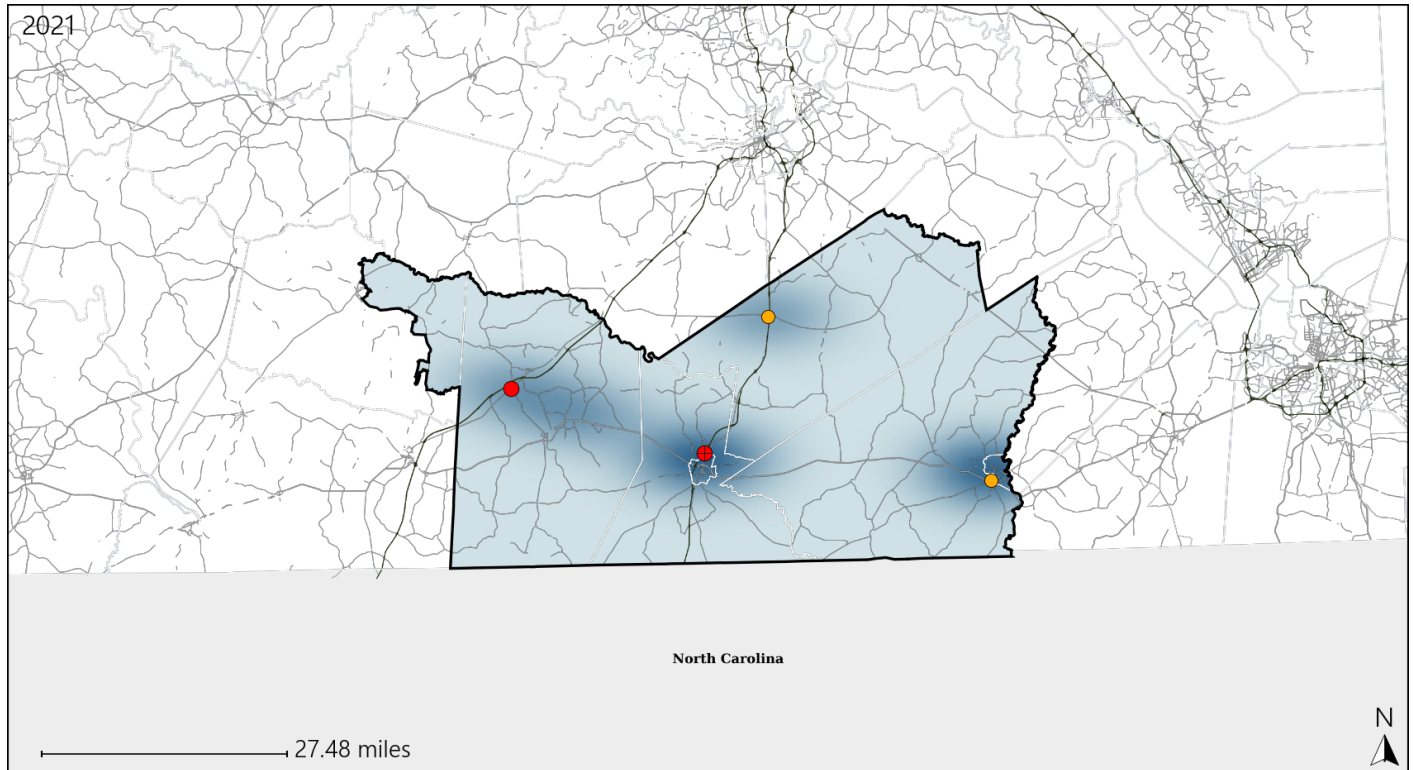
Available Crash Data - Calendar Year (CY)	CY 2018	CY 2019	CY 2020	CY 2021
Total Crashes	1316	1200	1405	1367
Fatalities	21	32	22	38
Injuries	842	624	791	745
Unrestrained Fatalities	12	15	12	15
Percent of Unrestrained Fatalities to Total Fatalities	57%	47%	55%	39%
Unrestrained Injuries	93	81	82	90
Percent of Unrestrained Injuries to Total Injuries	11%	13%	10%	12%

Report of Crashes for January 1st - December 31st, 2021

Virginia House District 75 Pedestrian Crash Statistics

Report Generated April, 2022

	Count	Highest Time Period(s)	Highest Day(s)	Highest Month(s)
Fatal Crashes	2	3:00am - 5:59am	Tuesday	January • October
Pedestrian Fatalities	2	3:00pm - 5:59pm (100%)	(100%)	(100%)
Serious Injury Crashes	2	9:00pm - 11:59pm Noon - 2:59pm (100%)	Monday • Thursday (100%)	April • November (100%)



House District 75 Pedestrian-Related Crashes

Interstate Crashes

Non-interstate Crashes

● Fatal

● Fatal

⊕ Serious Injury

⊕ Serious Injury

The blue gradient represents the density of all pedestrian-related crashes.

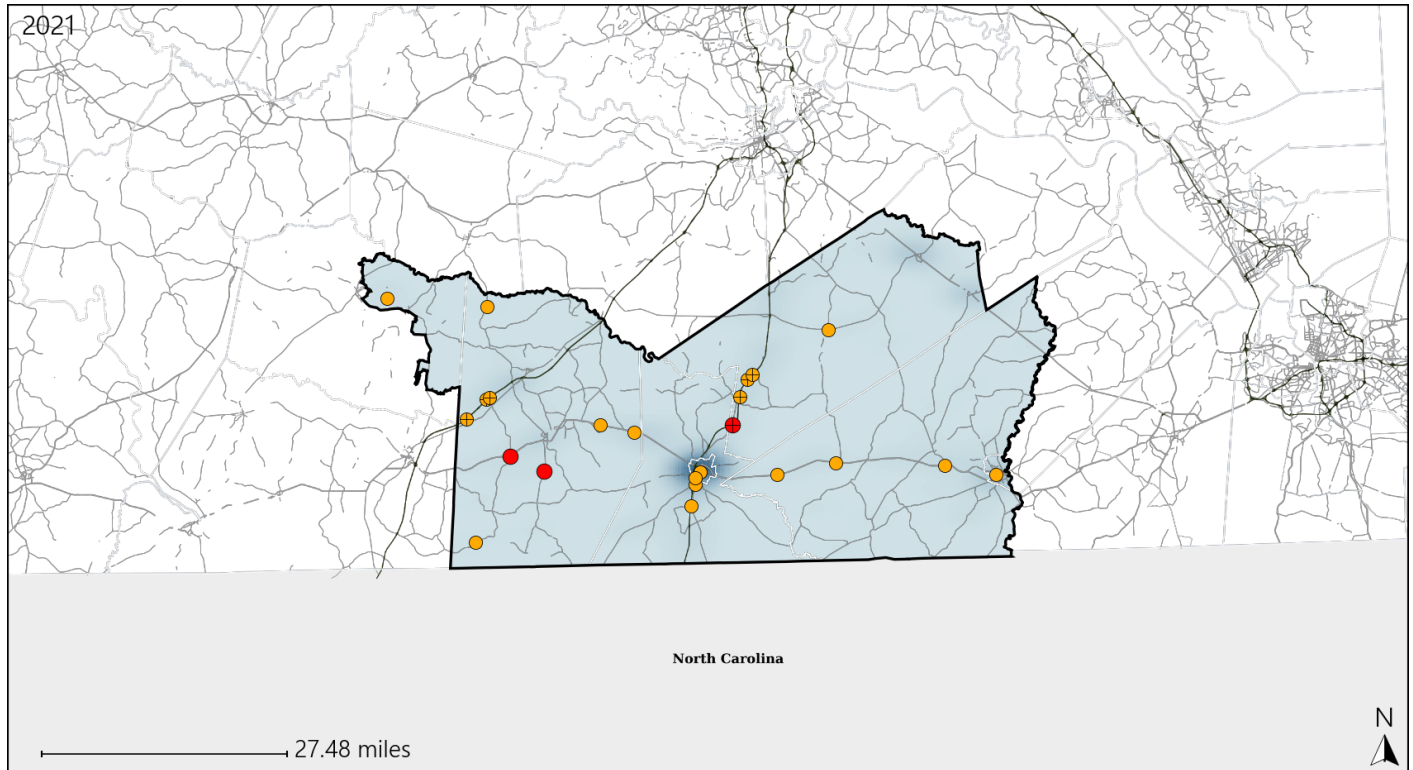


Available Crash Data - Calendar Year (CY)	CY 2018	CY 2019	CY 2020	CY 2021
Total Crashes	1316	1200	1405	1367
Fatal Crashes	20	26	18	31
Injury Crashes	526	435	533	492
Pedestrian-Related Fatal Crashes	3	2	1	2
Percent of Pedestrian-Related Fatal Crashes to Total Fatal Crashes	15%	8%	6%	6%
Pedestrian-Related Injury Crashes	9	7	7	5
Percent of Pedestrian-Related Injury Crashes to Total Injury Crashes	2%	2%	1%	1%

Virginia House District 75 Distracted Driving Crash Statistics

Report Generated April, 2022

	Count	Highest Time Period(s)	Highest Day(s)	Highest Month(s)
Fatal Crashes	3	6:00am - 8:59am	Monday • Thursday	August • December
Resulting Fatalities	4	(67%)	(66%)	(66%)
Serious Injury Crashes	20	3:00pm - 5:59pm	Friday	April
		(35%)	(25%)	(20%)



House District 75 Distracted Driving-Related Crashes

Interstate Crashes

Non-interstate Crashes

- Fatal
- Serious Injury

- Fatal
- Serious Injury

The blue gradient represents the density of all distracted driving-related crashes.



Available Crash Data - Calendar Year (CY)	CY 2018	CY 2019	CY 2020	CY 2021
Total Crashes	1316	1200	1405	1367
Fatal Crashes	20	26	18	31
Injury Crashes	526	435	533	492
Distracted Driving-Related Fatal Crashes	3	4	0	3
Percent of Distracted Driving-Related Fatal Crashes to Total Fatal Crashes	15%	15%	0%	10%
Distracted Driving-Related Injury Crashes	109	88	118	85
Percent of Distracted Driving-Related Injury Crashes to Total Injury Crashes	21%	20%	22%	17%